

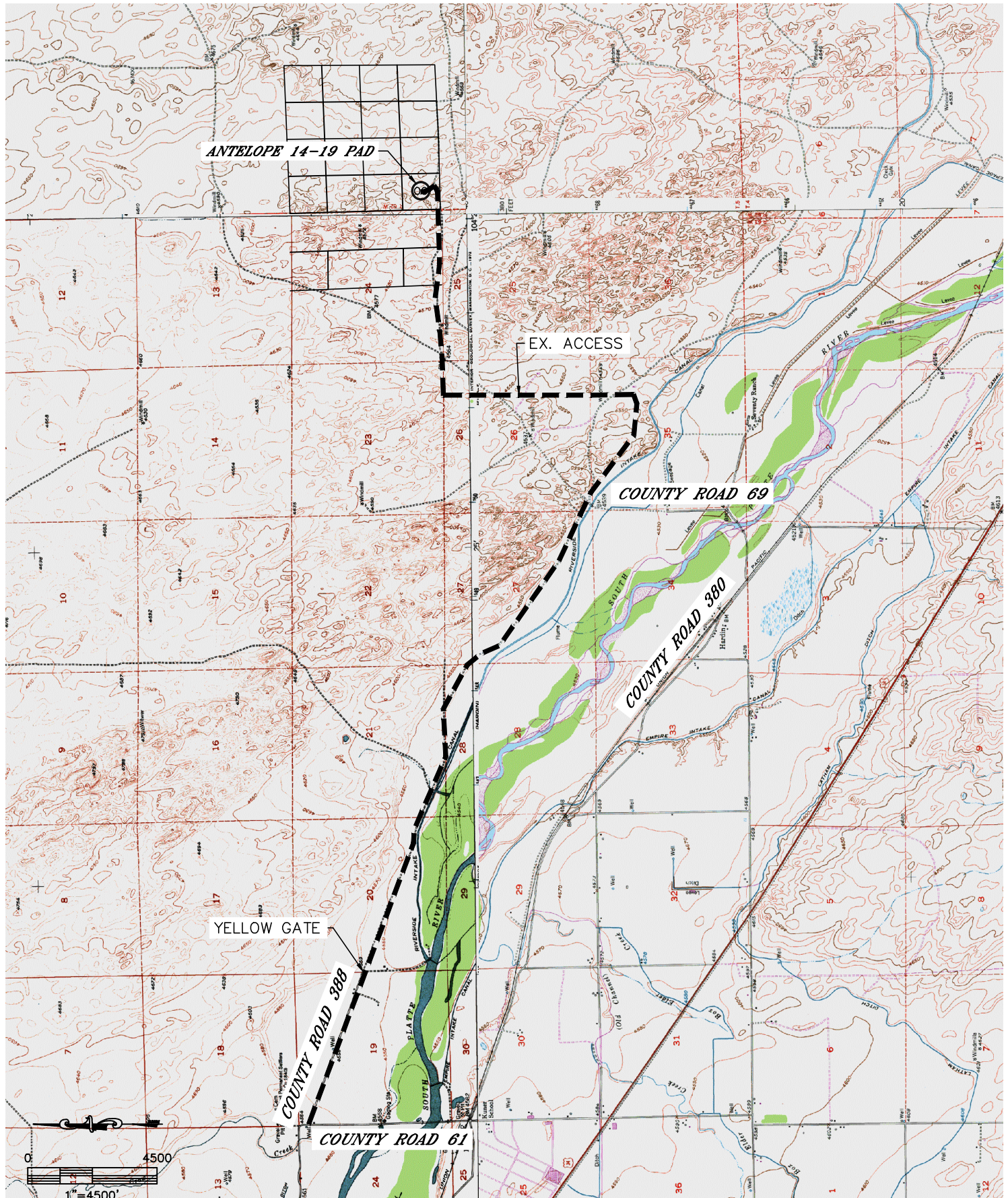


Lat40°, Inc. 1635 Foxtrail Drive, Suite 325 Loveland, CO 970-776-3321

ACCESS ROAD MAP

ANTELOPE 14-19 PAD

SECTION: 19
TOWNSHIP: 5N
RANGE: 62W



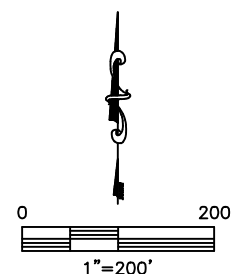
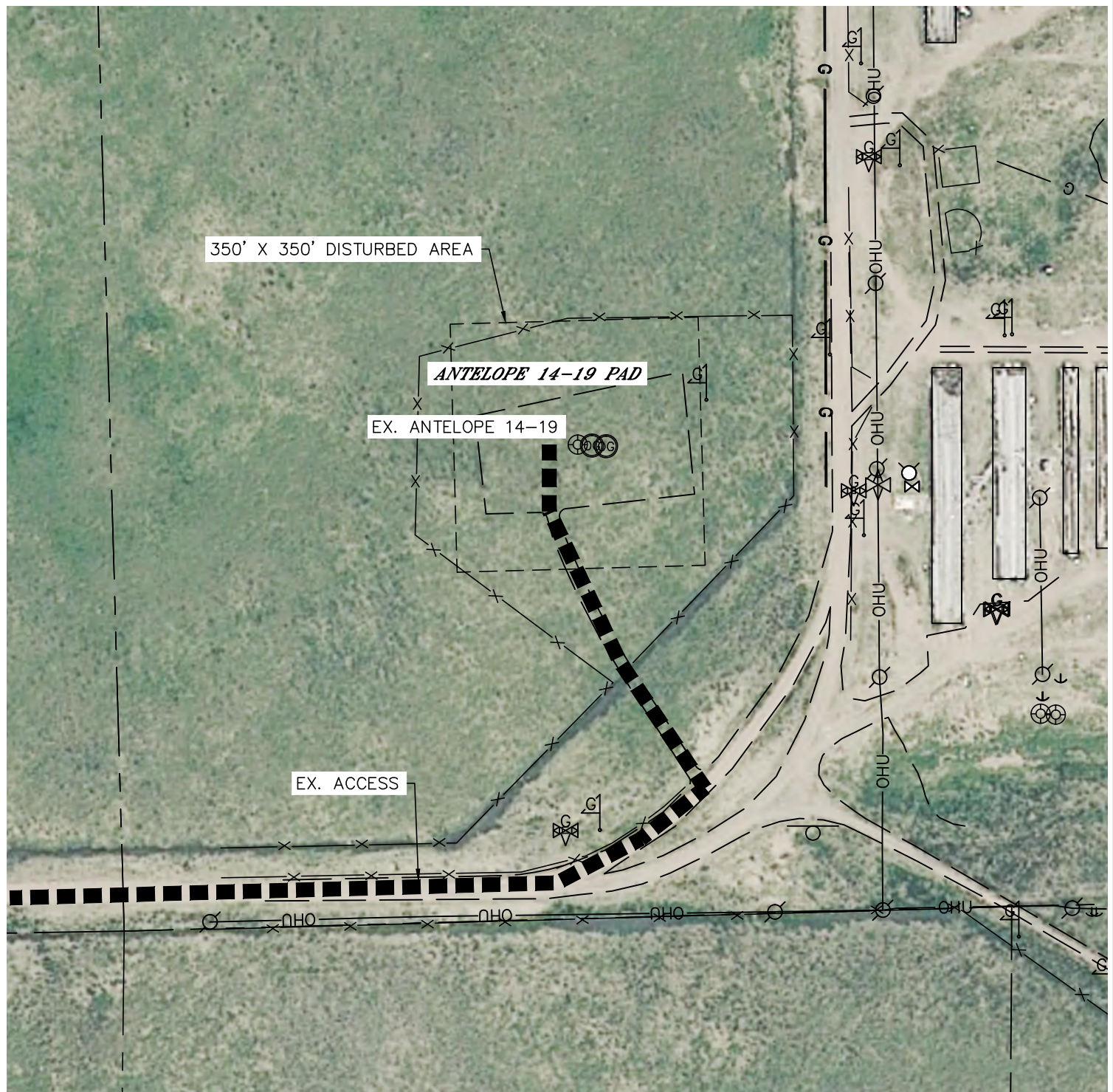


Lat40°, Inc. 1635 Foxtrail Drive, Suite 325 Loveland, CO 970-776-3321

ACCESS ROAD MAP

ANTELOPE 14-19 PAD

SECTION: 19
TOWNSHIP: 5N
RANGE: 62W



SHEET 2 OF 3

DATE: 12/20/2013
PROJECT#: 2012071



Lat40°, Inc. 1635 Foxtrail Drive, Suite 325 Loveland, CO 970-776-3321

ACCESS ROAD MAP

ANTELOPE 14-19 PAD

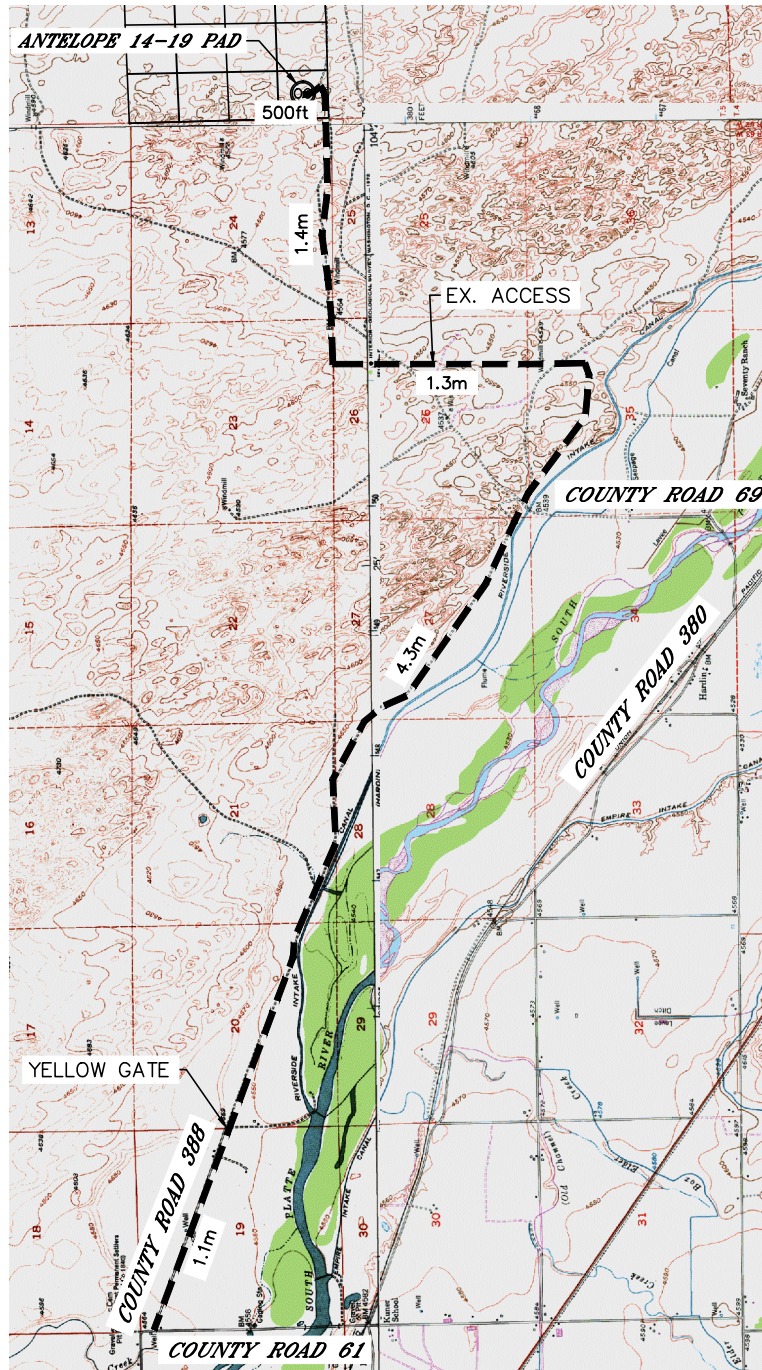
SECTION: 19
TOWNSHIP: 5N
RANGE: 62W

EXISTING WELLS:
ANTELOPE 14-19

PROPOSED WELLS:
ANTELOPE E11-A14-19HNC
ANTELOPE J11-F14-19HC

DRIVING DIRECTIONS TO SITE:

FROM THE INTERSECTION OF WELD COUNTY ROAD 61 AND WELD COUNTY ROAD 388, DRIVE SOUTHEASTERLY ON COUNTY ROAD 388 FOR 1.1 MILES TO THE ENTRANCE OF 70 RANCH (YELLOW GATE), CONTINUE ALONG THE 70 RANCH MAIN ACCESS ROAD SOUTHEASTERLY FOR 4.3 MILES, CONTINUE NORTH ALONG 70 RANCH ACCESS ROAD 1.3 MILES, CONTINUE EAST ALONG 70 RANCH ACCESS ROAD 1.4 MILES TO THE PAD ACCESS ROAD TO THE LEFT, DRIVE NORTHWESTERLY ALONG PAD ACCESS ROAD 500 FEET TO THE SITE.



NOT TO SCALE