

1996 Alum. Cap,  
#17669, 0.6' Below  
Ground, in Range Box  
Lat: 39.681744°  
Long: 104.603444°

# WELL LOCATION PLAT

## T4S, R64W, 6th P.M.

Alum. Cap,  
#28285  
Lat: 39.681475°  
Long: 104.584100°

Well location, WATKINS #30-5-5GH, located as shown in LOT 1 of Section 30, T4S, R64W, 6th P.M., Arapahoe County, Colorado.

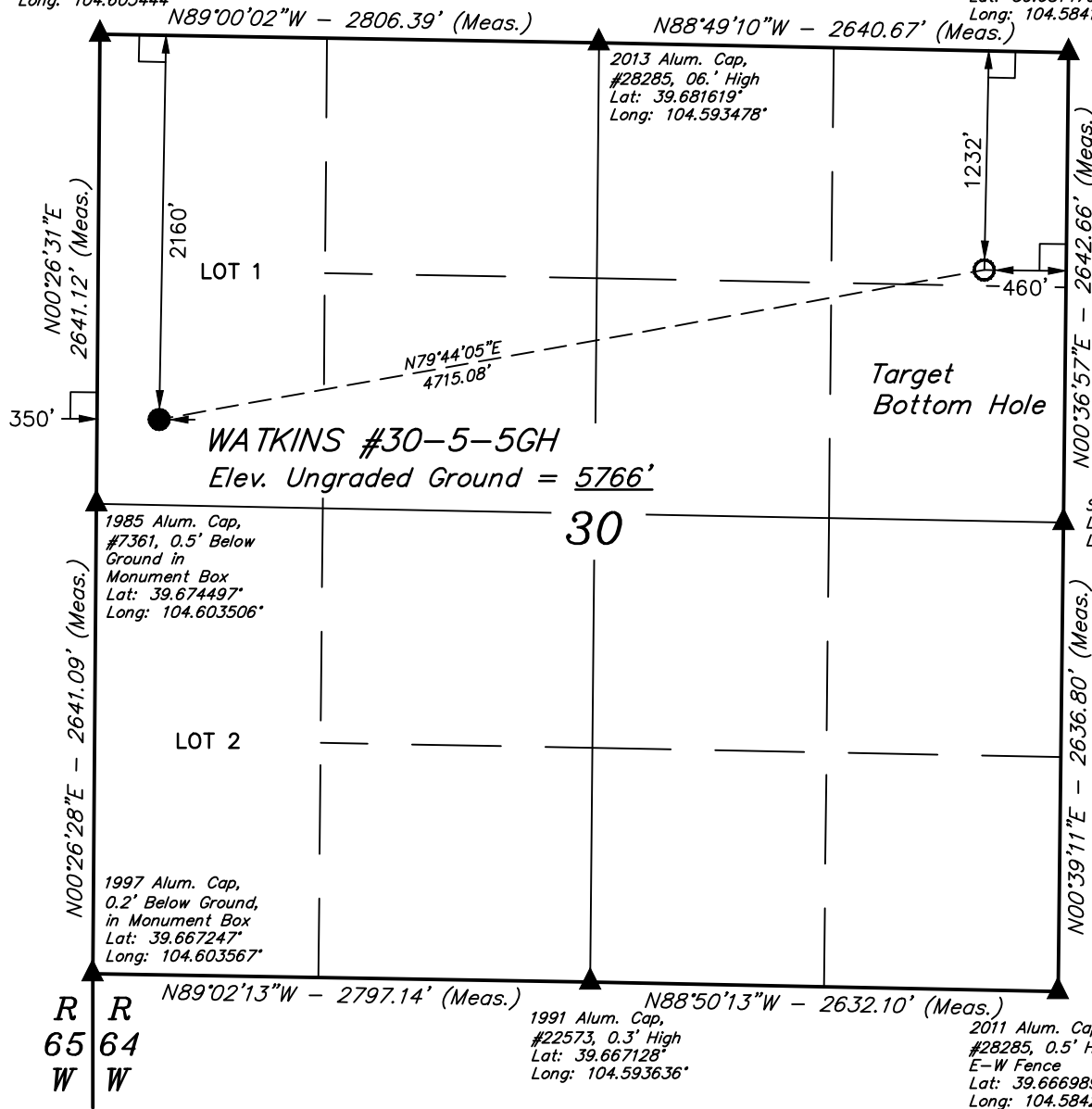
ConocoPhillips Company

### BASIS OF ELEVATION

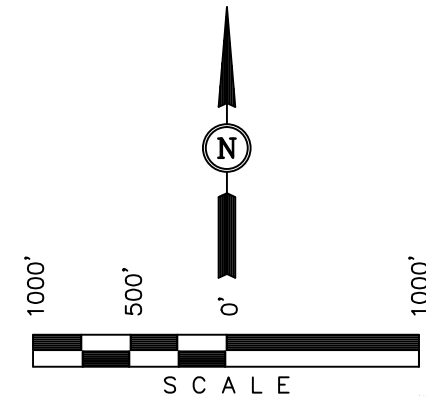
BENCHMARK 374 LOCATED ON THE SECTION LINE BETWEEN SECTIONS 12 & 13, T5S, R64W, 6th. P.M., TAKEN FROM 1988 PUBLISHED DATUM BY THE UNITED STATES DEPARTMENT OF THE INTERIOR, GEOLOGICAL SURVEY AS BEING 6054.61 FEET.

### BASIS OF BEARINGS

BASIS OF BEARINGS IS A G.P.S. OBSERVATION.



Set Marked Stone  
Lat: 39.674225°  
Long: 104.584192°



### CERTIFICATION

THIS IS TO CERTIFY THAT THE ABOVE PLAT WAS PREPARED FROM FIELD NOTES OF ACTUAL SURVEYS MADE BY ME OR UNDER MY SUPERVISION AND THAT THE SAME ARE TRUE AND CORRECT TO THE BEST OF MY KNOWLEDGE AND BELIEF.

REGISTERED LAND SURVEYOR  
REGISTRATION NO. 28285  
STATE OF COLORADO  
09-15-13

UINTAH ENGINEERING & LAND SURVEYING  
85 SOUTH 200 EAST - VERNAL, UTAH 84078  
(435) 789-1017

### LEGEND:

- └─┘ = 90° SYMBOL
- = PROPOSED WELL HEAD.
- ▲ = SECTION CORNERS LOCATED.

PDOP = 2.1

NAD 83 (TARGET BOTTOM HOLE)	NAD 83 (SURFACE HOLE)
LATITUDE = 39°40'41.23" (39.678119)	LATITUDE = 39°40'32.88" (39.675800)
LONGITUDE = 104°35'08.79" (104.585775)	LONGITUDE = 104°36'08.10" (104.602250)
NAD 27 (TARGET BOTTOM HOLE)	NAD 27 (SURFACE HOLE)
LATITUDE = 39°40'41.28" (39.678133)	LATITUDE = 39°40'32.93" (39.675814)
LONGITUDE = 104°35'06.91" (104.585253)	LONGITUDE = 104°36'06.22" (104.601728)

SCALE 1" = 1000'	DATE SURVEYED: 09-30-13	DATE DRAWN: 10-08-13
PARTY D.N. G.W. J.W.	REFERENCES G.L.O. PLAT	
WEATHER WARM	FILE ConocoPhillips Company	

1996 Alum. Cap,  
#17669, 0.6' Below  
Ground, in Range Box  
Lat: 39.681744°  
Long: 104.603444°

# SECTION BREAKDOWN T4S, R64W, 6th P.M.

Alum. Cap,  
#28285  
Lat: 39.681475°  
Long: 104.584100°

ConocoPhillips Company

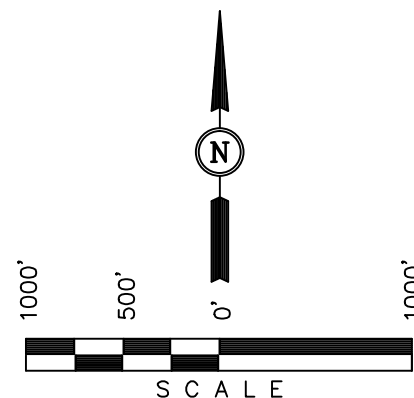
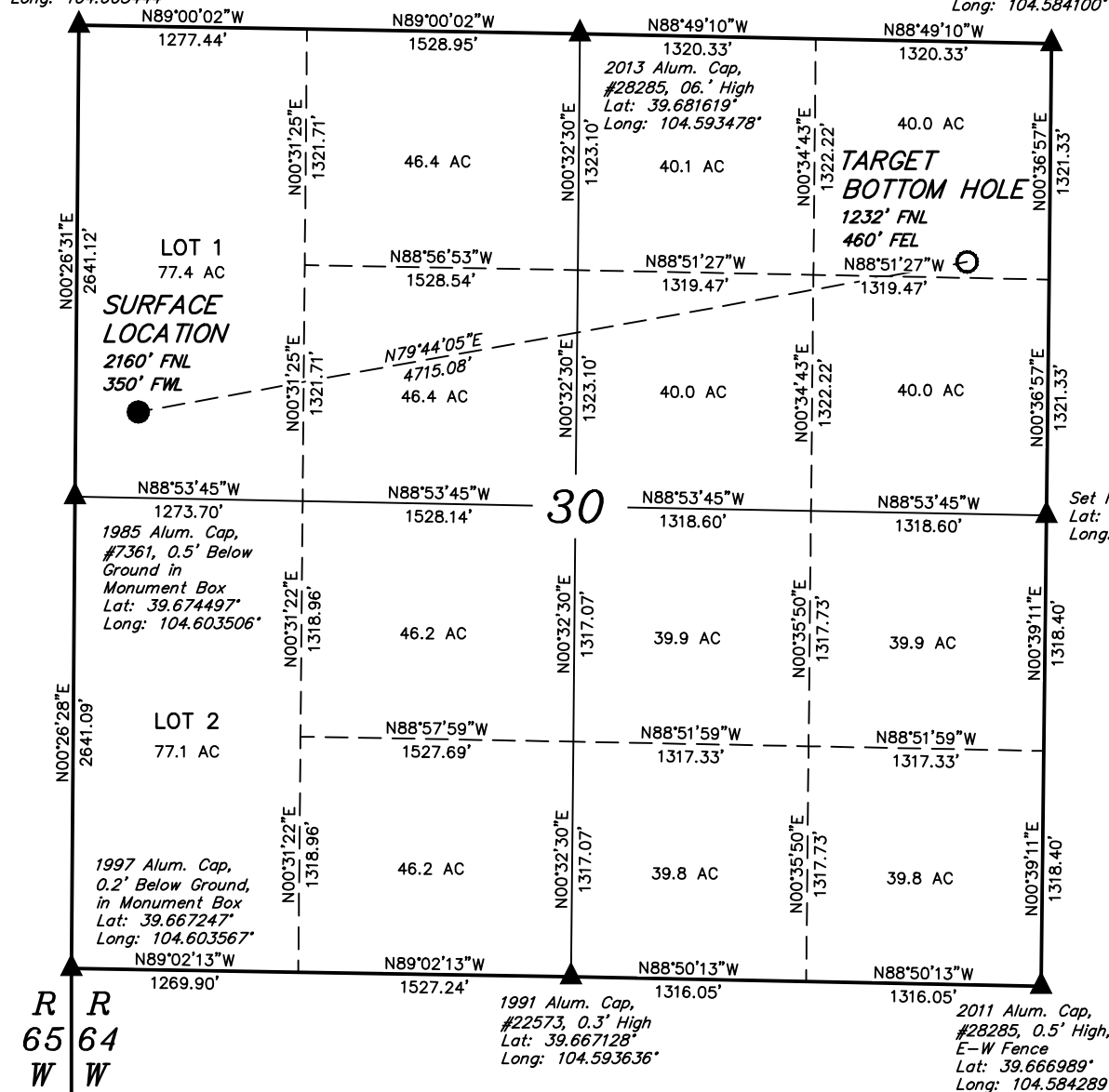
Well location, WATKINS #30-5-5GH, located as shown in LOT 1 of Section 30, T4S, R64W, 6th P.M., Arapahoe County, Colorado.

## BASIS OF ELEVATION

BENCHMARK 374 LOCATED ON THE SECTION LINE BETWEEN SECTIONS 12 & 13, T5S, R64W, 6th. P.M., TAKEN FROM 1988 PUBLISHED DATUM BY THE UNITED STATES DEPARTMENT OF THE INTERIOR, GEOLOGICAL SURVEY AS BEING 6054.61 FEET.

## BASIS OF BEARINGS

BASIS OF BEARINGS IS A G.P.S. OBSERVATION.



## CERTIFICATION

THIS IS TO CERTIFY THAT THE ABOVE PLAT WAS PREPARED FROM FIELD NOTES OF ACTUAL SURVEYS MADE BY ME OR UNDER MY SUPERVISION AND THAT THE SAME ARE TRUE AND CORRECT TO THE BEST OF MY KNOWLEDGE AND BELIEF.

REGISTERED LAND SURVEYOR  
REGISTRATION NO. 28285  
STATE OF COLORADO  
09-15-13

UINTAH ENGINEERING & LAND SURVEYING  
85 SOUTH 200 EAST - VERNAL, UTAH 84078  
(435) 789-1017

## LEGEND:

- └ = 90° SYMBOL
- = PROPOSED WELL HEAD.
- ▲ = SECTION CORNERS LOCATED.

NAD 83 (TARGET BOTTOM HOLE)	NAD 83 (SURFACE HOLE)
LATITUDE = 39°40'41.23" (39.678119)	LATITUDE = 39°40'32.88" (39.675800)
LONGITUDE = 104°35'08.79" (104.585775)	LONGITUDE = 104°36'08.10" (104.602250)
NAD 27 (TARGET BOTTOM HOLE)	NAD 27 (SURFACE HOLE)
LATITUDE = 39°40'41.28" (39.678133)	LATITUDE = 39°40'32.93" (39.675814)
LONGITUDE = 104°35'06.91" (104.585253)	LONGITUDE = 104°36'06.22" (104.601728)

SCALE 1" = 1000'	DATE SURVEYED: 09-30-13	DATE DRAWN: 10-08-13
PARTY D.N. G.W. J.W.	REFERENCES G.L.O. PLAT	
WEATHER WARM	FILE ConocoPhillips Company	