

LOG created using LPLOT VH Version 3.0, August 08, 2013, Copyright (C) 1999-2009 Pason Systems Corp.

OPERATOR: NOBLE ENERGY INC
WELL: ROHN STATE LD04-65-1HN
LOCATION: SEC 4 T9N R58W
COUNTY: WELD
STATE: COLORADO
SPOT: 2064' FSL, 480' FEL
ELEVATION: 4704' GL; 4728' KB
FIELD: WILDCAT
SPUD DATE: 08/02/2013
TD DATE: 08/04/2013
DATES LOGGED: 08/03/2013 - 08/04/2013
DEPTHS LOGGED: 1200' - 4866' MD
LOGGERS: LAURA KELLOGG; CONOR PESICKA
DRILLING FLUID: LSND
DRILLING RIG: H&P 273
API: 05-123-37451
LOG TYPE: VERTICAL
SCALE: 1:240 (5 inches per 100 feet)
REMARKS: WELLSITE GEOLOGICAL SERVICES
 PROVIDED BY COLUMBINE LOGGING INC.

LITHOLOGIES



Sandstone



Shaly Sandstone



Silty Shale

ENGINEERING SYMBOLS



Connection



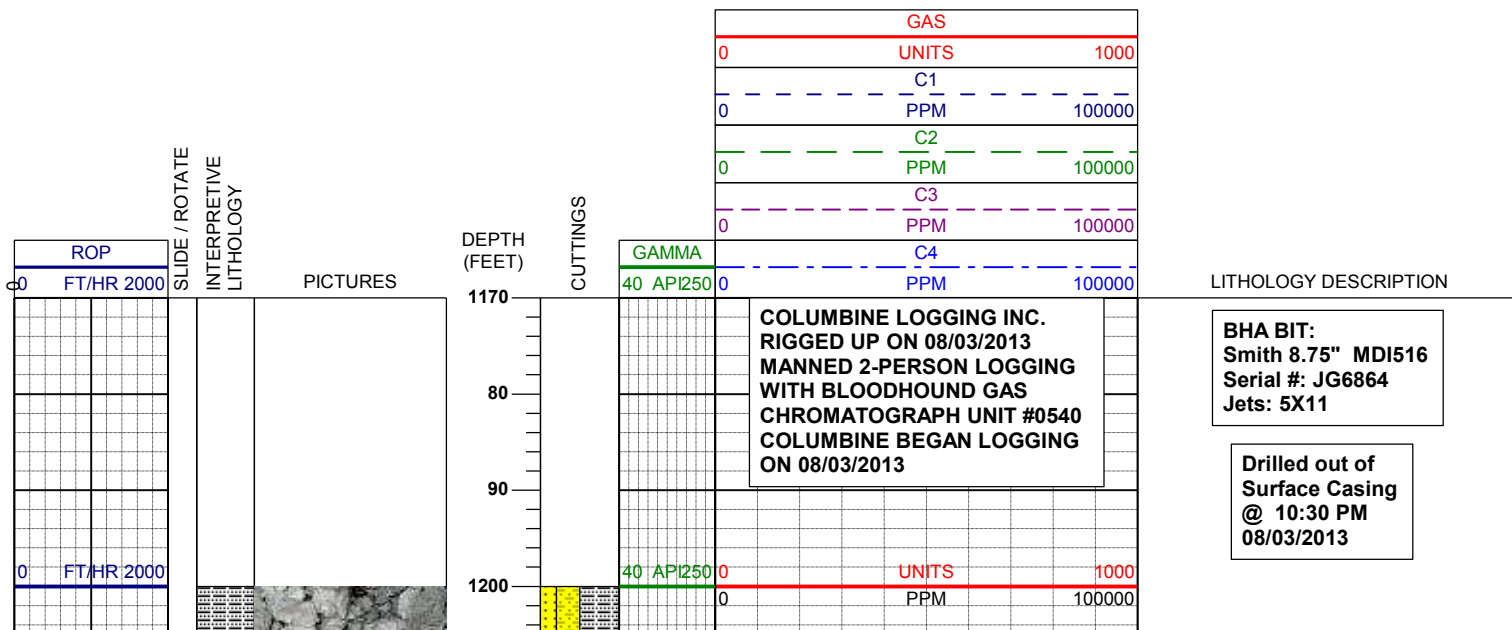
Connection Gas

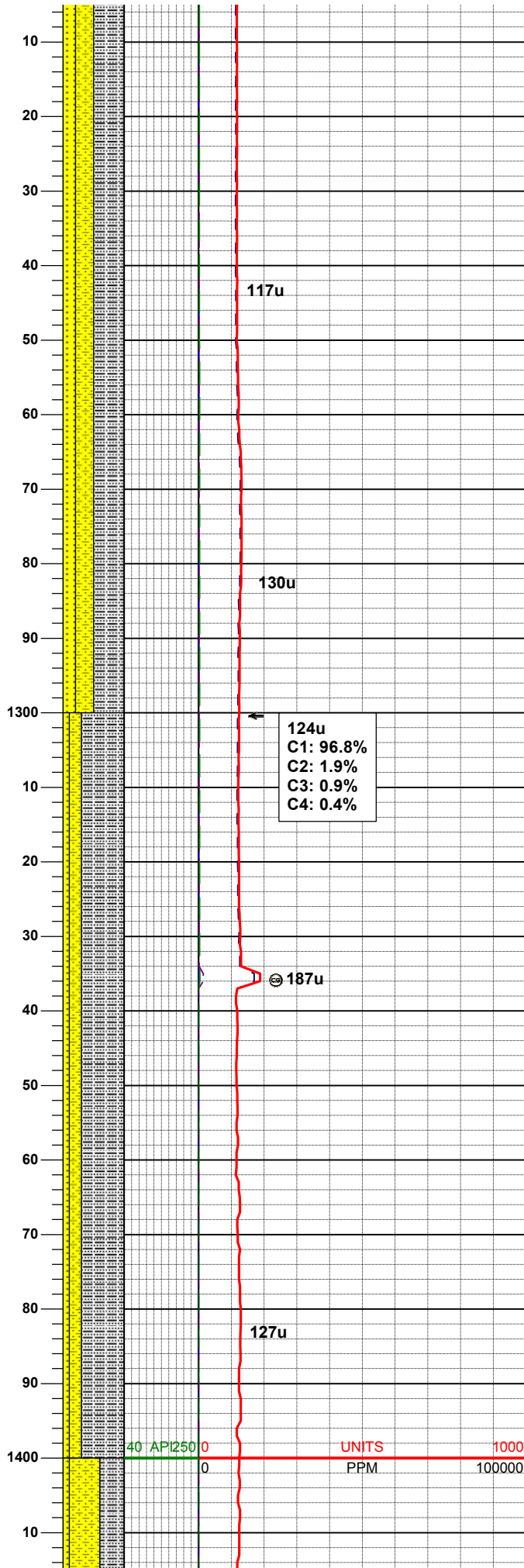
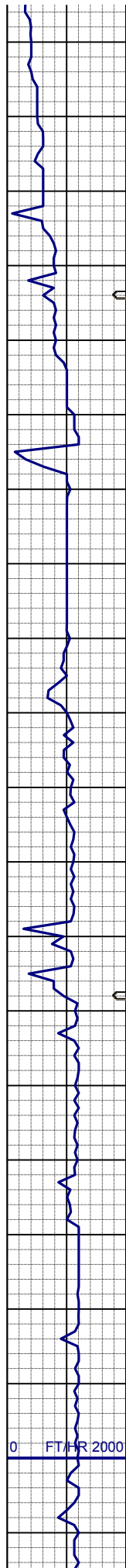


Arrow



Midnight Depth





SLTYSH: ltgy-gy, sbplty-sbblky, v sft, arg cmt
SHYSS: ltgy-gy, s&p ip, sbang, v fri, vfgr, psrt, wrndd, abnt cly, arg cmt, sl calc
SS: ltgy-gy-trnsl, sbang-ang, fgr, psrt, wrndd, arg cmt, tr lit frag, sme glau

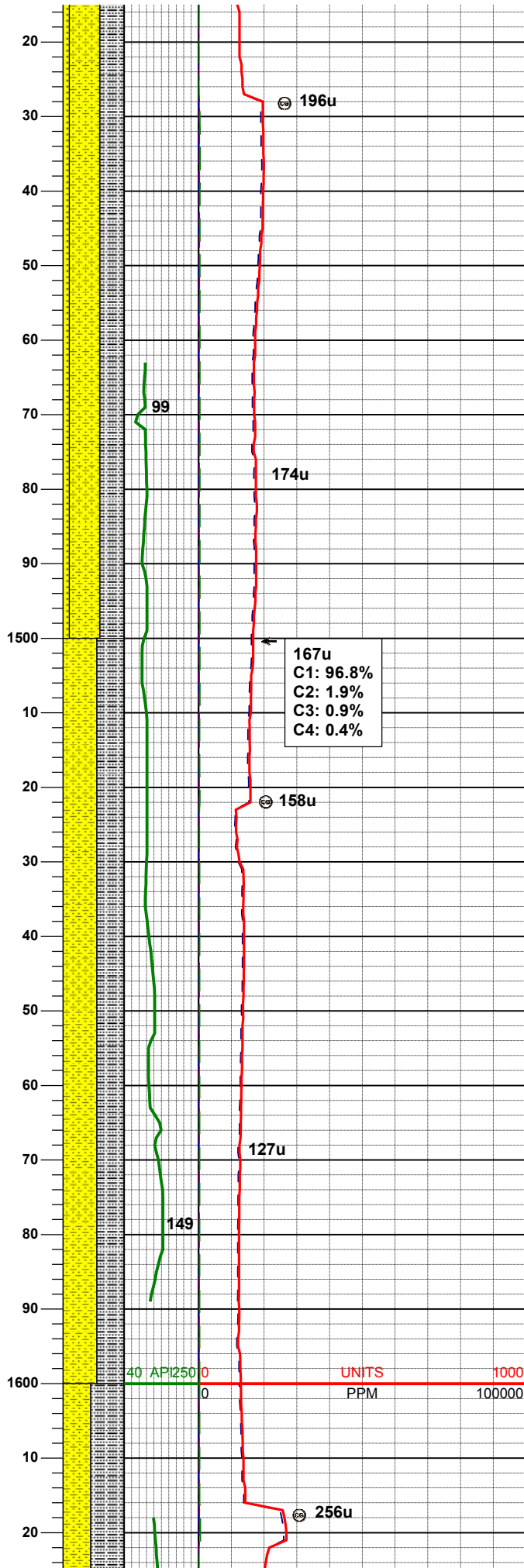
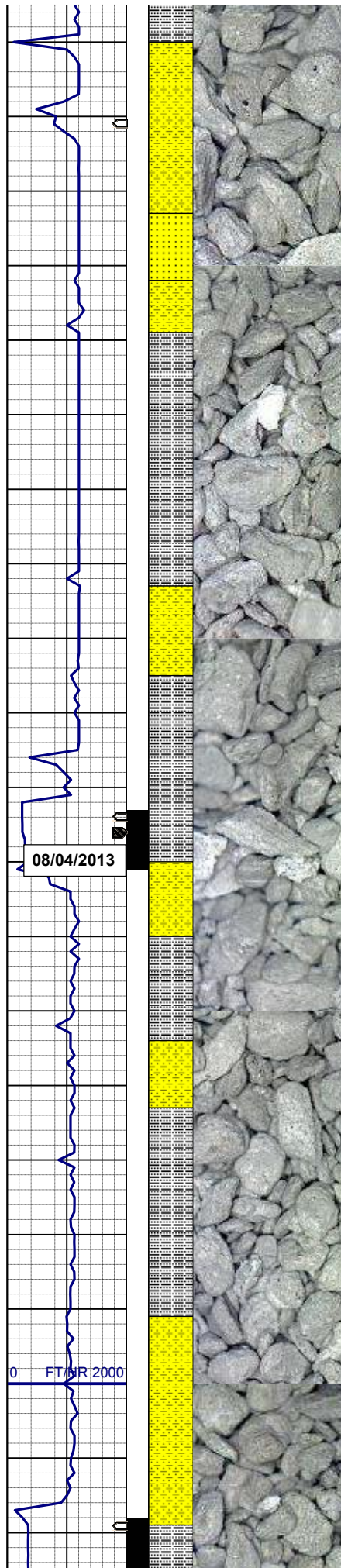
MD 1282'
INC 0.2°
AZM 326.6°
TVD 1281.98'

124u
C1: 96.8%
C2: 1.9%
C3: 0.9%
C4: 0.4%

SLTYSH: ltgy-gy, sbplty-sbblky, v sft, gt-sltly tex, arg cmt
SHYSS: ltgy-gy, s&p ip, sbang, v fri, vfgr, psrt, wrndd, abnt cly, arg cmt, sl calc
SS: ltgy-gy-trnsl, sbang-ang, fgr, psrt, wrndd, arg cmt, tr lit frag, sme glau

MD 1375'
INC 0.1°
AZM 18.5°
TVD 1374.98'

40 API 250 0 UNITS 1000
0 PPM 100000



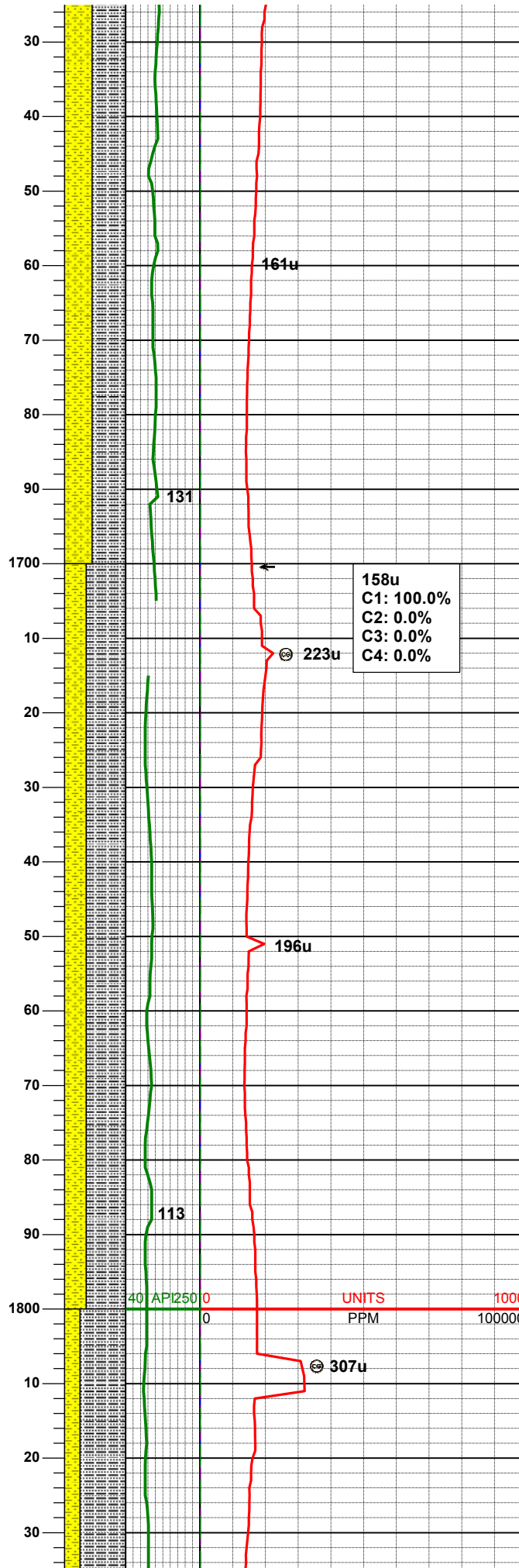
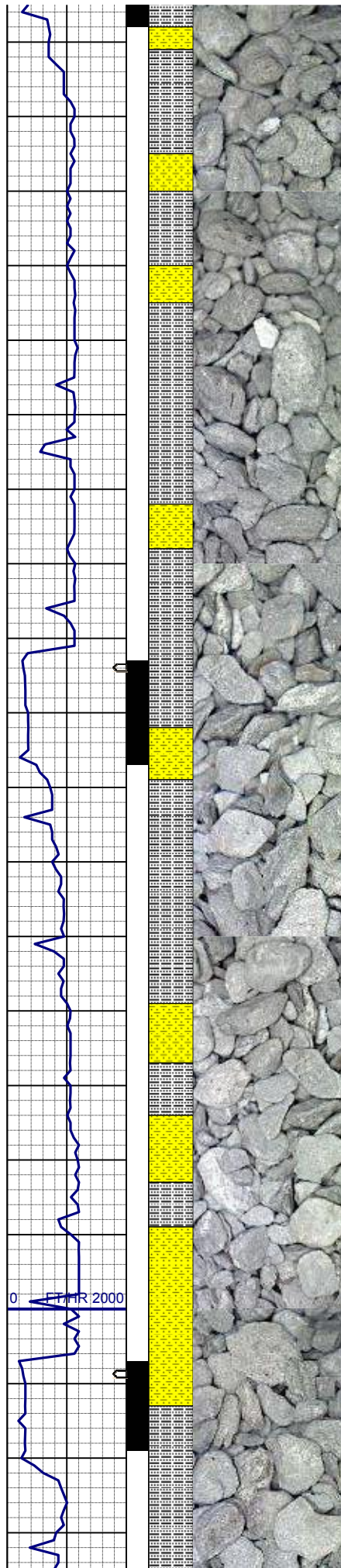
SHYSS: ltgy-gy, s&p ip, sbang, v fri, vfgr, psrt, wrndd, abnt cly, arg cmt, sl calc
SLTYSH: ltgy-gy, sbplty-sbblky, v sft, gt-slty tex, arg cmt
SS: ltgy-gy-trnsl, sbang-ang, fgr, psrt, wrndd, arg cmt, tr lit frag, sme glau

MD 1468'
INC 0.2°
AZM 91.4°
TVD 1467.98'

WT IN 8.45/ OUT 8.45
VIS IN 37/ OUT 37

SHYSS: ltgy-gy, s&p ip, sbang, v fri, vfgr, psrt, wrndd, abnt cly, arg cmt, sl calc
SLTYSH: ltgy-gy, sbplty-sbblky, v sft, gt-slty tex, arg cmt

MD 1563'
INC 1.7°
AZM 69.1°
TVD 1562.96'



SLTYSH: ltgy-gy, sbplty-sbblky, v sft,
gt-sltly tex, arg cmt
SHYSS: ltgy-gy, s&p ip, sbang, v fri,
vfgr, psrt, wrndd, abnt cly, arg cmt, sl
calc

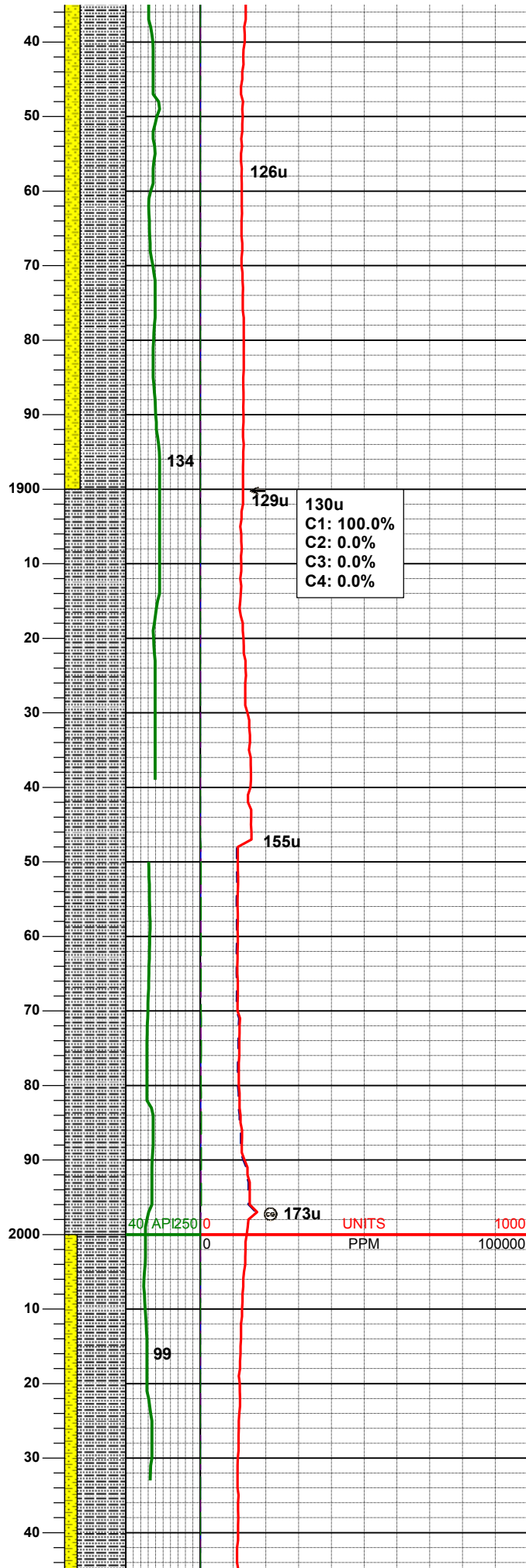
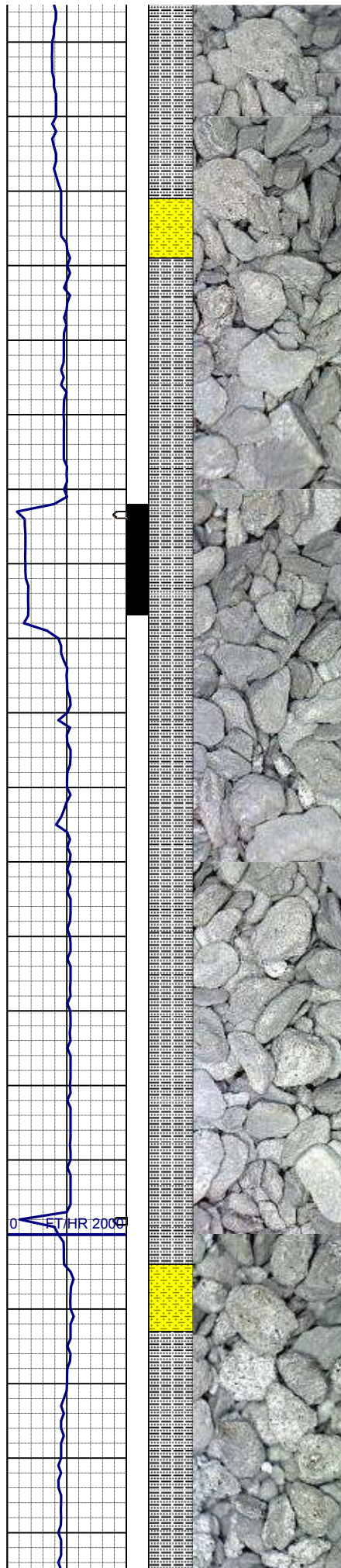
MD	1658'
INC	2.6°
AZM	68.6°
TVD	1657.89'

WT IN 8.40/ OUT 8.40
VIS IN 25/ OUT 25

SLTYSH: ltgy-gy, sbplty-sbblky, v sft,
gt-sltly tex, arg cmt
SHYSS: ltgy-gy, s&p ip, sbang, v fri,
vfgr, psrt, wrndd, abnt cly, arg cmt, sl
calc

MD	1752'
INC	3.8°
AZM	44.5°
TVD	1751.75'

MD	1847'
INC	5.0°



AZM 43.8°
TVD 1846.47'

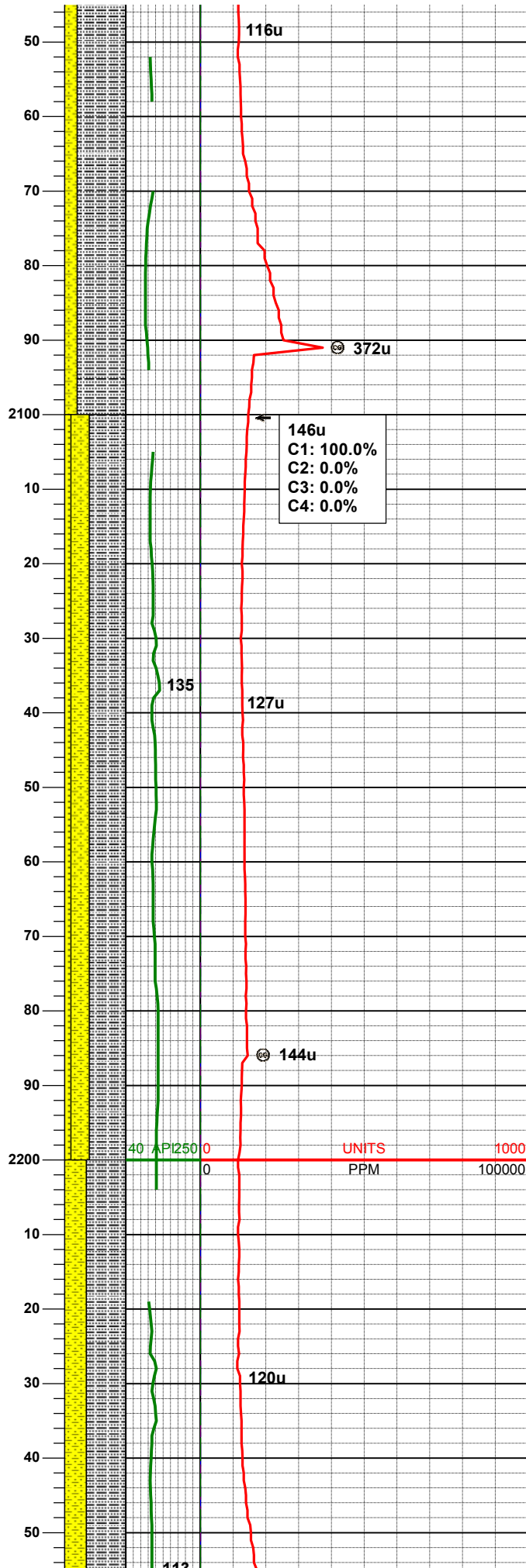
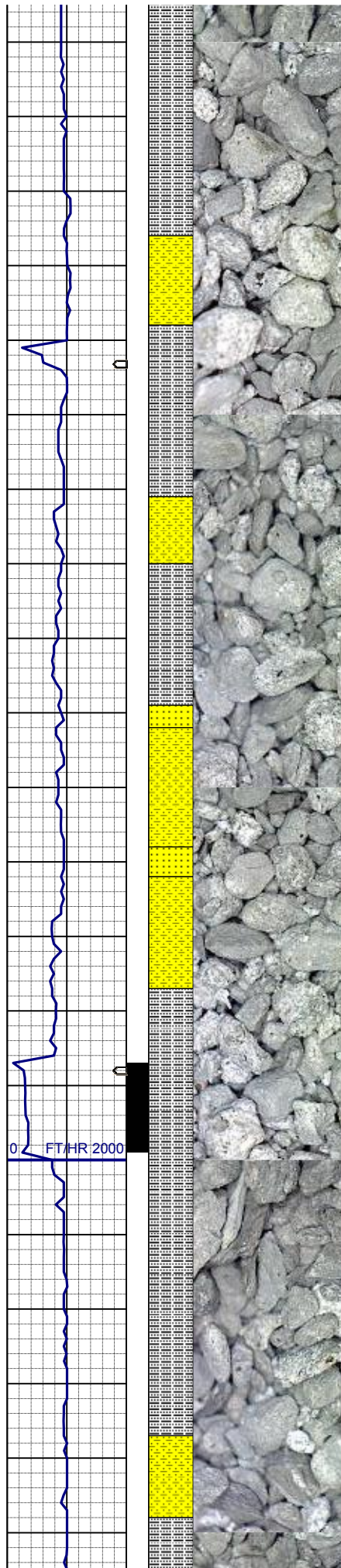
SLTYSH: ltgy-gy, sbplty-sbblky, v sft,
gt-slty tex, arg cmt
SHYSS: ltgy-gy, s&p ip, sbang, v fri,
vfgr, psrt, wrndd, abnt cly, arg cmt, sl
calc

MD 1942'
INC 6.8°
AZM 38.3°
TVD 1940.93'

SLTYSH: ltgy-gy, sbplty-sbblky, v sft,
gt-slty tex, arg cmt

MD 2037'
INC 5.7°
AZM 37.6°
TVD 2035.36'

SL TYSH: ltgy-gy, sbplty-sbblky, v sft



SLTYSH: ltgy-gy, sbpity-sbbiky, v sft, gt-slty tex, arg cmt
SHYSS: ltgy-gy, s&p ip, sbang, v fri, vfgr, psrt, wrndd, abnt cly, arg cmt, sl calc

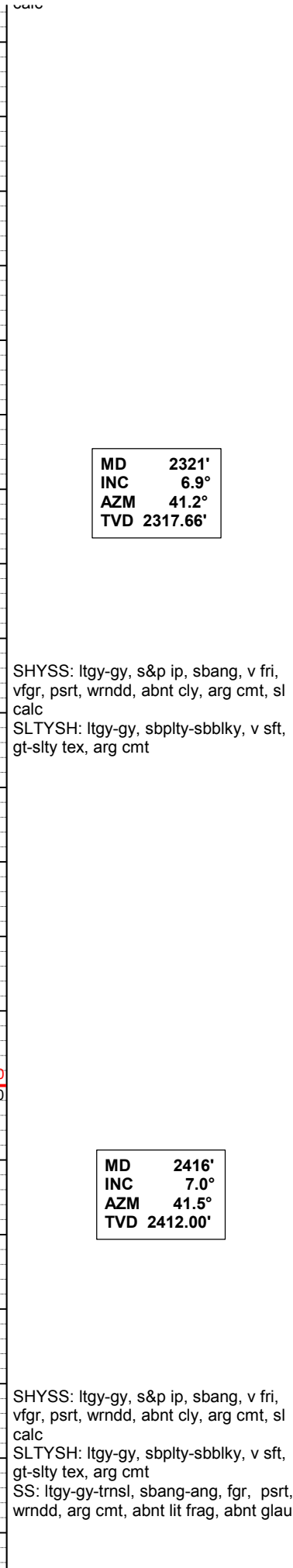
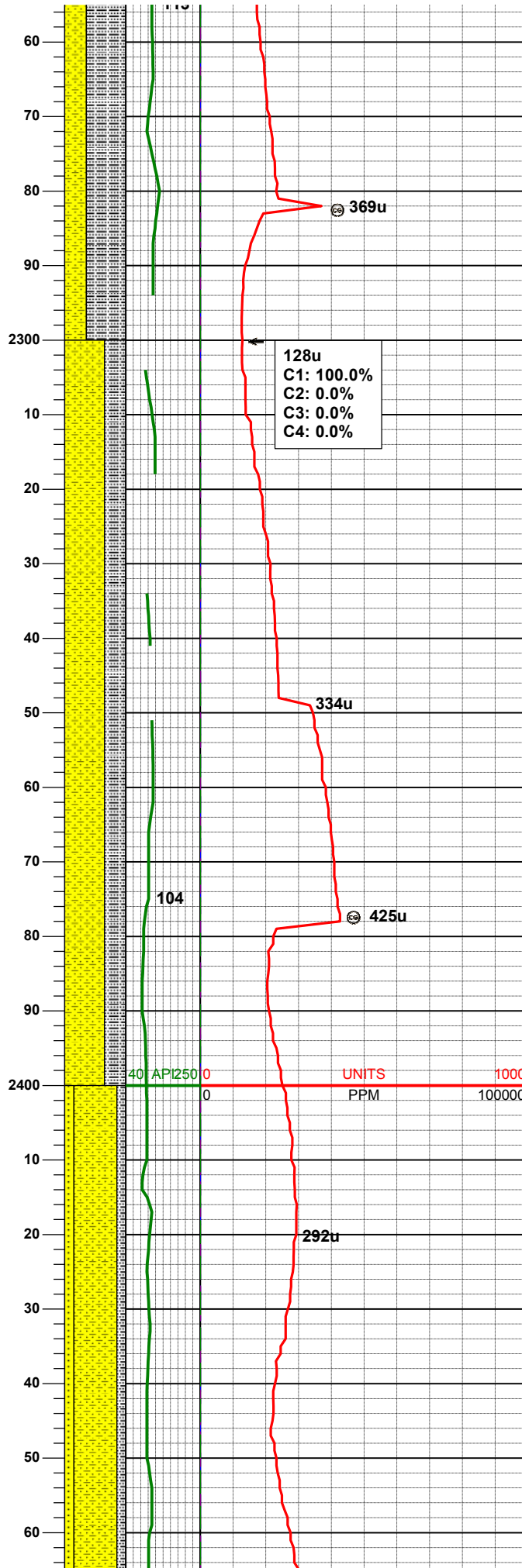
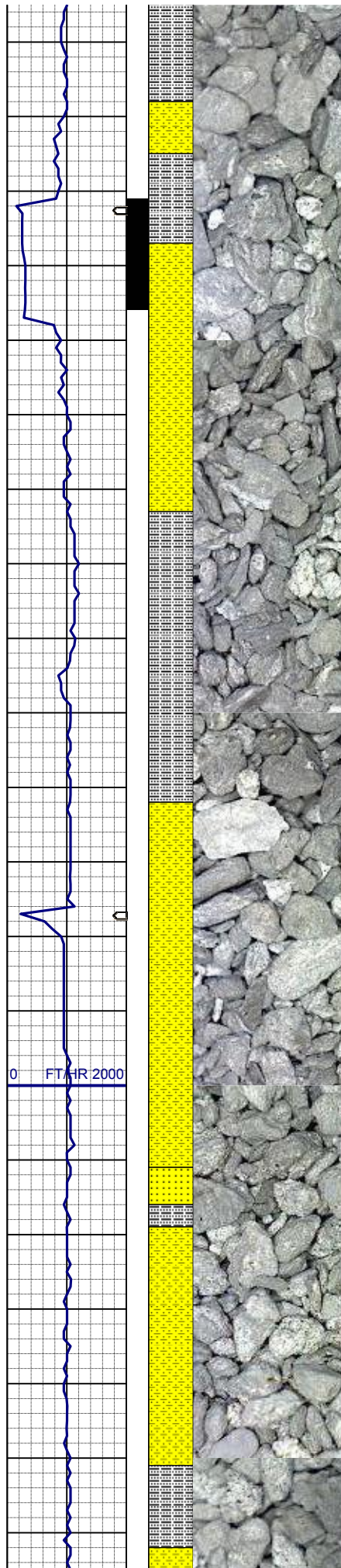
WT IN 10.30/ OUT10.30
VIS IN 26/ OUT 26

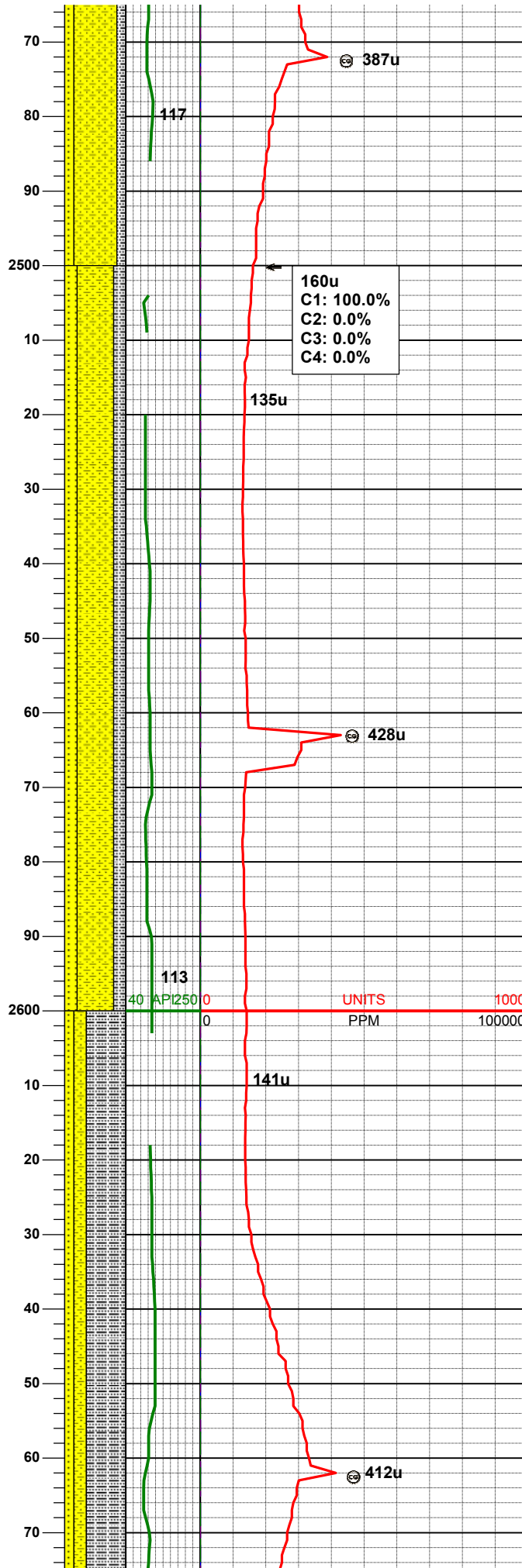
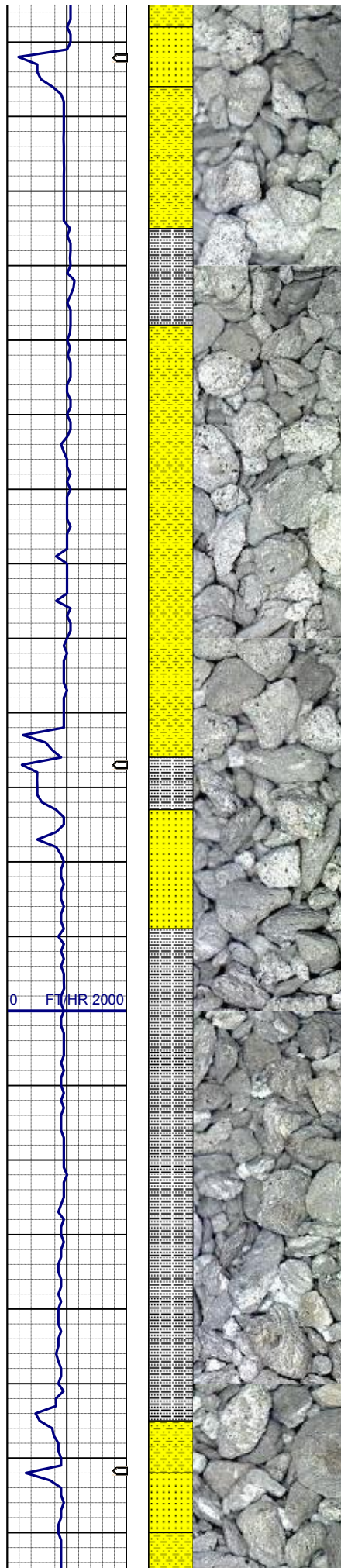
MD 2132'
INC 5.7°
AZM 35.5°
TVD 2129.89'

SLTYSH: ltgy-gy, sbpity-sbbiky, v sft, gt-slty tex, arg cmt
SHYSS: ltgy-gy, s&p ip, sbang, v fri, vfgr, psrt, wrndd, abnt cly, arg cmt, sl calc
SS: ltgy-gy-trnsl, sbang-ang, fgr, psrt, wrndd, arg cmt, occ lit frag, tr glau

MD 2226'
INC 6.1°
AZM 36.4°
TVD 2223.30'

SLTYSH: ltgy-gy, sbpity-sbbiky, v sft, gt-slty tex, arg cmt
SHYSS: ltgy-gy, s&p ip, sbang, v fri, vfgr, psrt, wrndd, abnt cly, arg cmt, sl calc



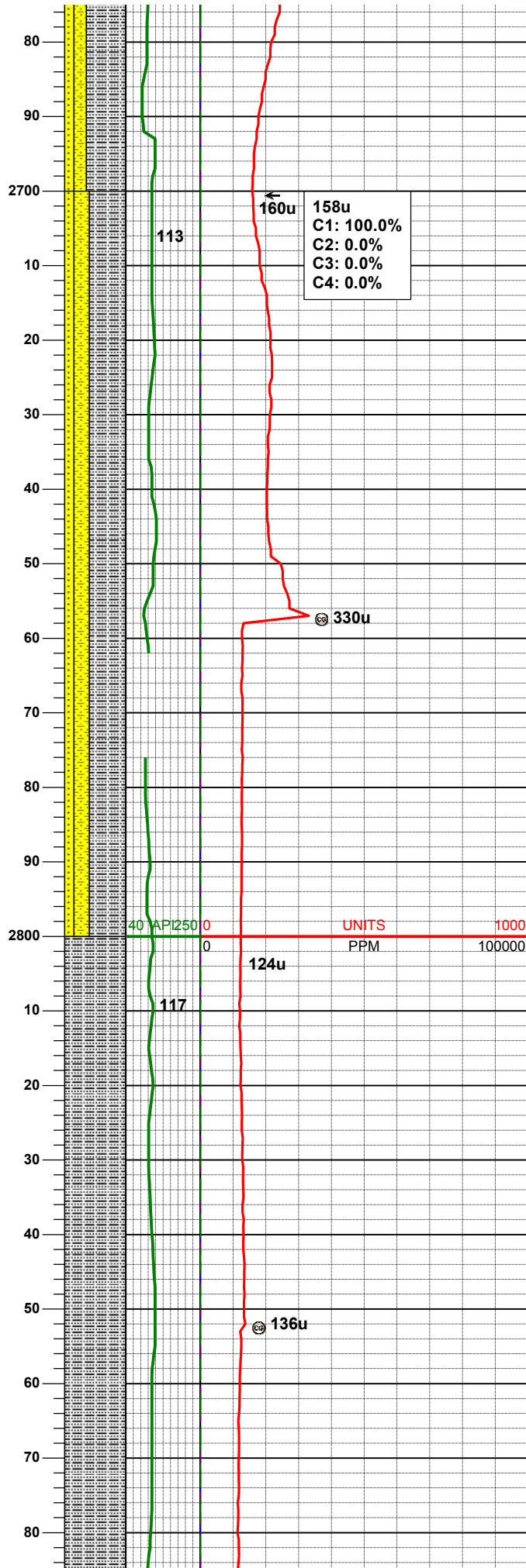
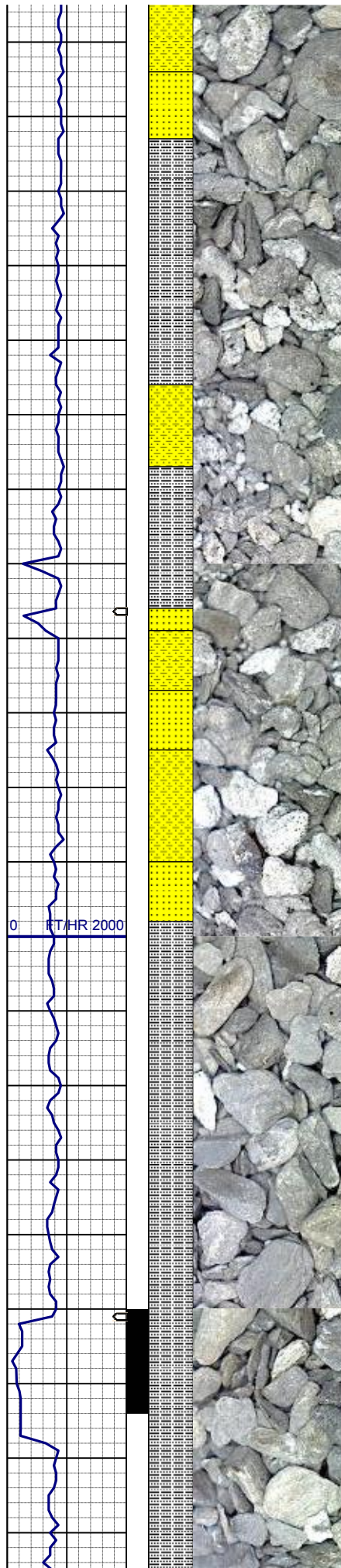


MD 2511'
INC 7.3°
AZM 39.1°
TVD 2506.26'

SHYSS: ltgy-gy, s&p ip, sbang, v fri,
vfgr, psrt, wrndd, abnt cly, arg cmt, sl
calc
SLTYSH: ltgy-gy, sbplty-sbblky, v sft,
gt-sltly tex, arg cmt
SS: ltgy-gy-trnsl, sbang-ang, fgr, psrt,
wrndd, arg cmt, abnt lit frag, abnt glau

MD 2605'
INC 7.1°
AZM 39.4°
TVD 2599.52'

SLTYSH: ltgy-gy, sbplty-sbblky, v sft,
gt-sltly tex, arg cmt
SHYSS: ltgy-gy, s&p ip, sbang, v fri,
vfgr, psrt, wrndd, abnt cly, arg cmt, sl
calc
SS: ltgy-gy-trnsl, sbang-ang, fgr, psrt,
wrndd, arg cmt, abnt lit frag, abnt glau



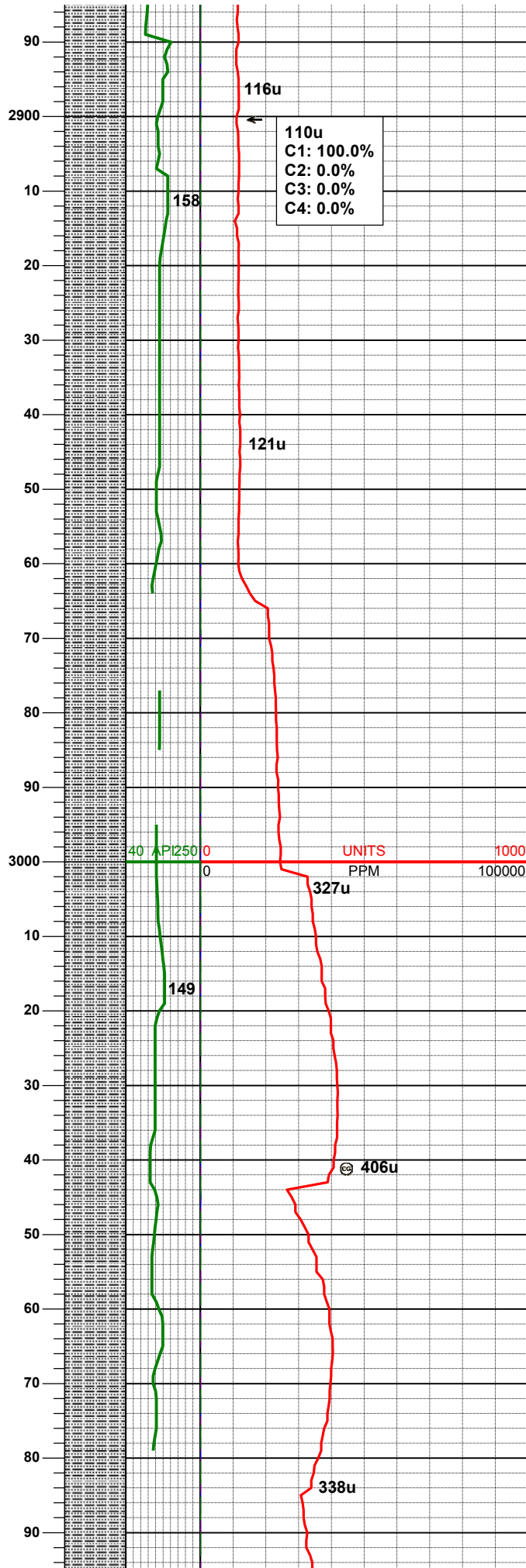
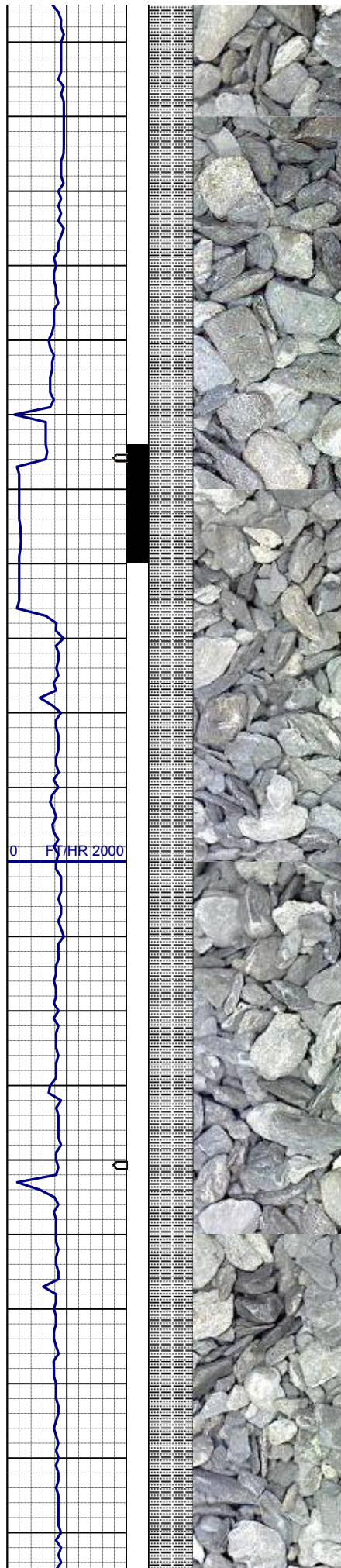
MD 2700'
INC 6.8°
AZM 38.2°
TVD 2693.87'

SLTYSH: ltgy-gy, sbplty-sbblky, v sft, gt-slty tex, arg cmt
SHYSS: ltgy-gy, s&p ip, sbang, v fri, vfgr, psrt, wrndd, abnt cly, arg cmt, sl calc
SS: ltgy-gy-trnsl, sbang-ang, fgr, psrt, wrndd, arg cmt, abnt lit frag, abnt glau

MD 2795'
INC 6.2°
AZM 38.3°
TVD 2788.21'

SLTYSH: ltgy-gy, sbplty-sbblky, v sft, gt-slty tex, arg cmt

MD 2880'



MD 2889'
INC 6.2°
AZM 37.8°
TVD 2881.66'

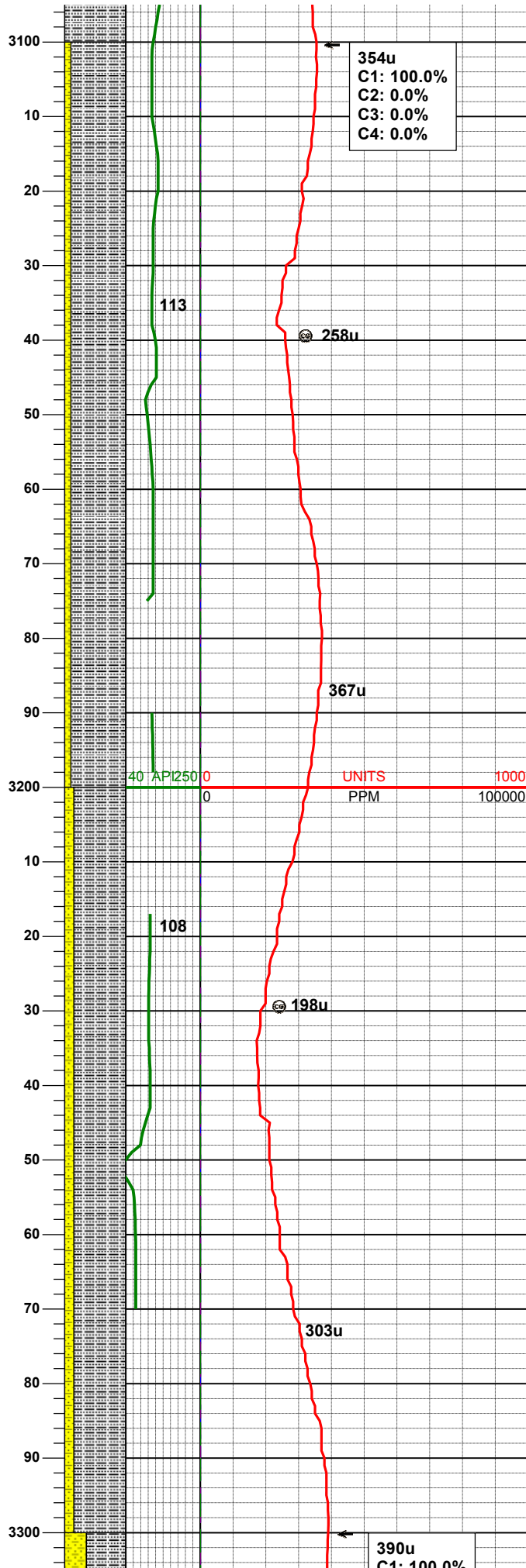
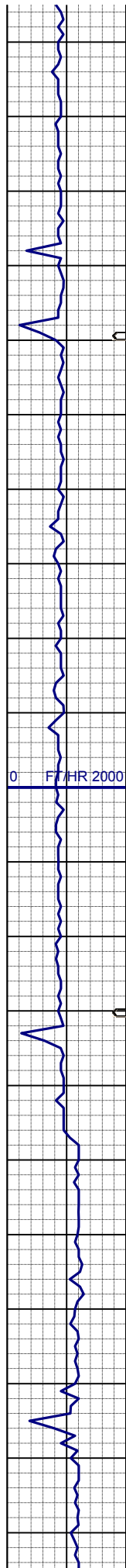
WT IN 8.30/ OUT 8.30
VIS IN 26/ OUT 26

SLTYSH: ltgy-gy, sbplty-sbblky, v sft,
gt-slty tex, arg cmt

MD 2984'
INC 7.2°
AZM 28.7°
TVD 2976.01'

SLTYSH: ltgy-gy, sbplty-sbblky, v sft,
gt-slty tex, arg cmt

MD 3079'
INC 6.2°
AZM 24.8°
TVD 3070.36'

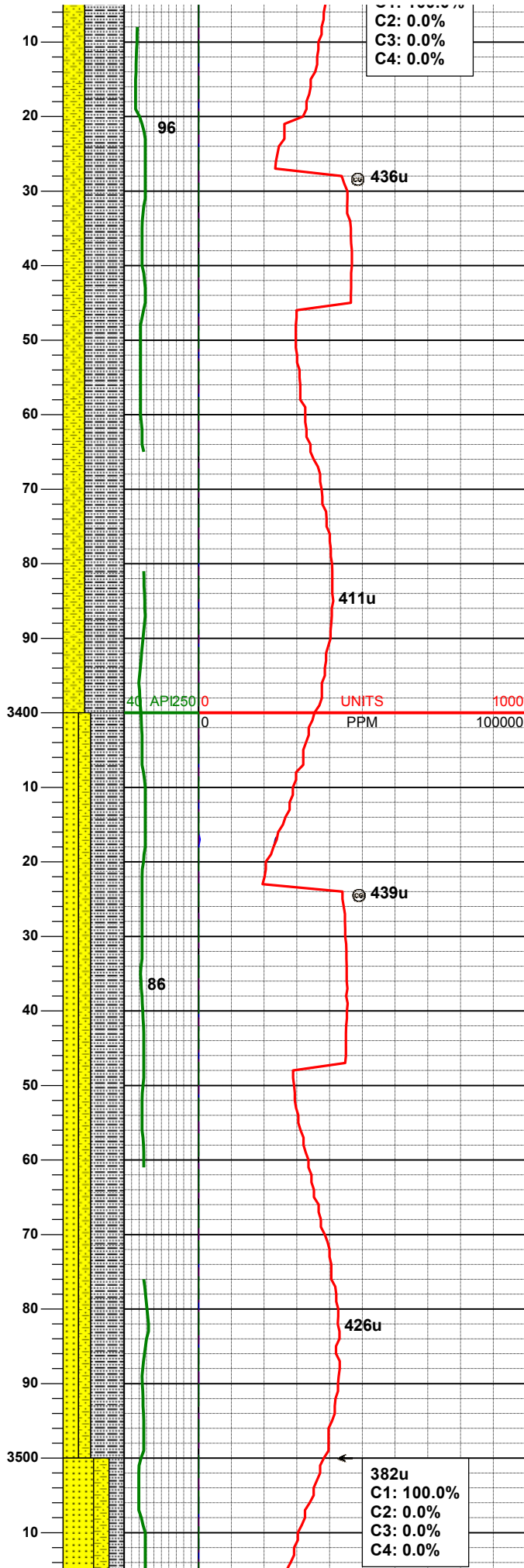
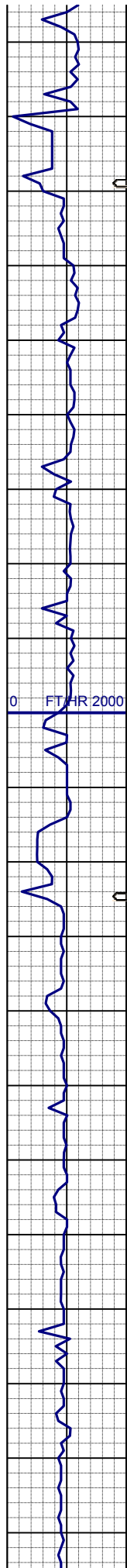


SLTYSH: ltgy-gy, sbplty-sbblky, v sft,
gt-slty tex, arg cmt
SHYSS: ltgy-gy, s&p ip, sbang, v fri,
vfgr, psrt, wrndd, abnt cly, arg cmt, sl
calc

MD	3174'
INC	6.6°
AZM	23.4°
TVD	3164.73'

SLTYSH: ltgy-gy, sbplty-sbblky, v sft,
gt-slty tex, arg cmt
SHYSS: ltgy-gy, s&p ip, sbang, v fri,
vfgr, psrt, wrndd, abnt cly, arg cmt, sl
calc

MD	3269'
INC	6.9°
AZM	25.0°
TVD	3259.07'

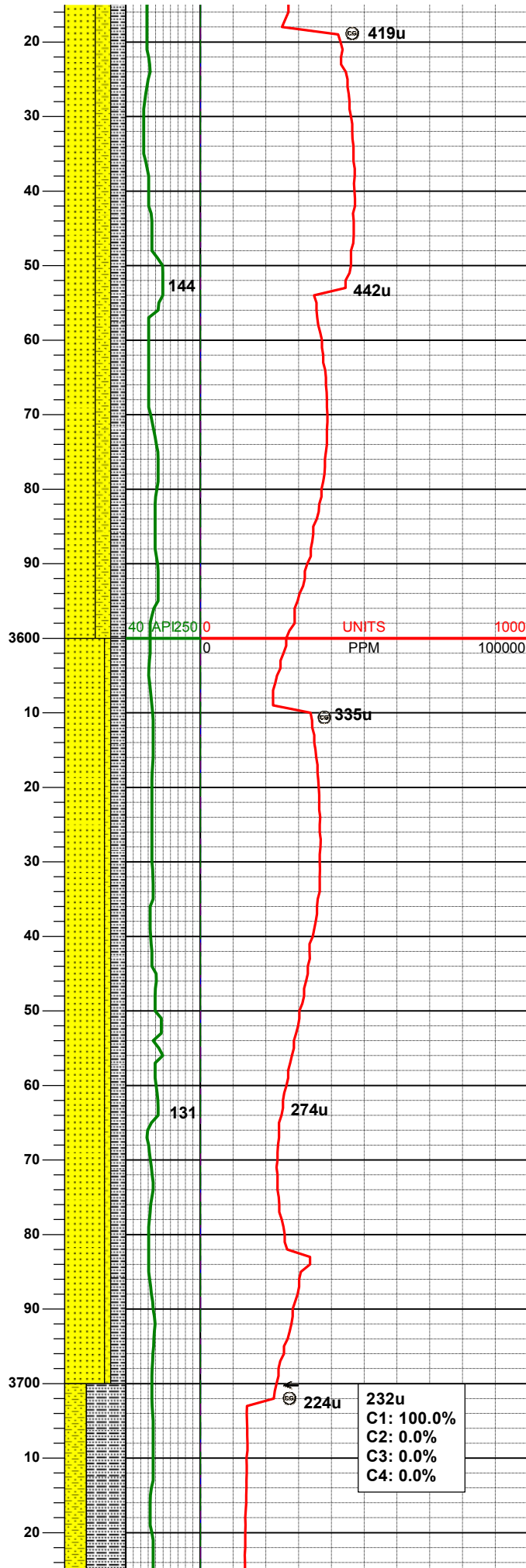
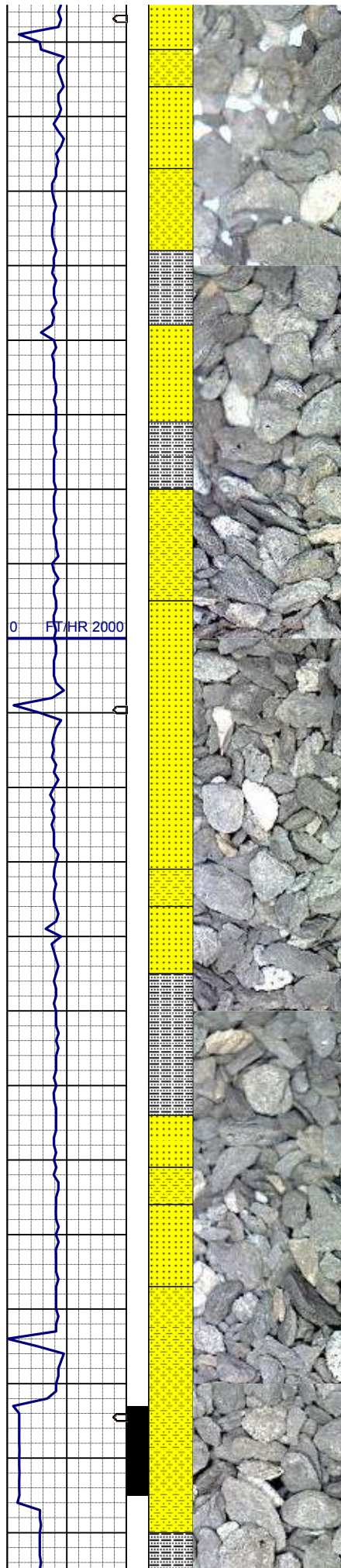


SLTYSH: ltgy-gy, sbplty-sbblky, v sft,
gt-slty tex, arg cmt
SHYSS: ltgy-gy, s&p ip, sbang, v fri,
vfgr, psrt, wrnnd, abnt cly, arg cmt, sl
calc

MD 3364'
INC 7.5°
AZM 24.8°
TVD 3353.32'

SLTYSH: ltgy-gy, sbplty-sbblky, v sft,
gt-slty tex, arg cmt
SS: ltgy-gy-trnsl, sbang-ang, fgr, psrt,
wrnnd, arg cmt, abnt lit frag, abnt glau
SHYSS: ltgy-gy, s&p ip, sbang, v fri,
vfgr, psrt, wrnnd, abnt cly, arg cmt, sl
calc

MD 3459'
INC 7.9°
AZM 24.8°
TVD 3447.47'



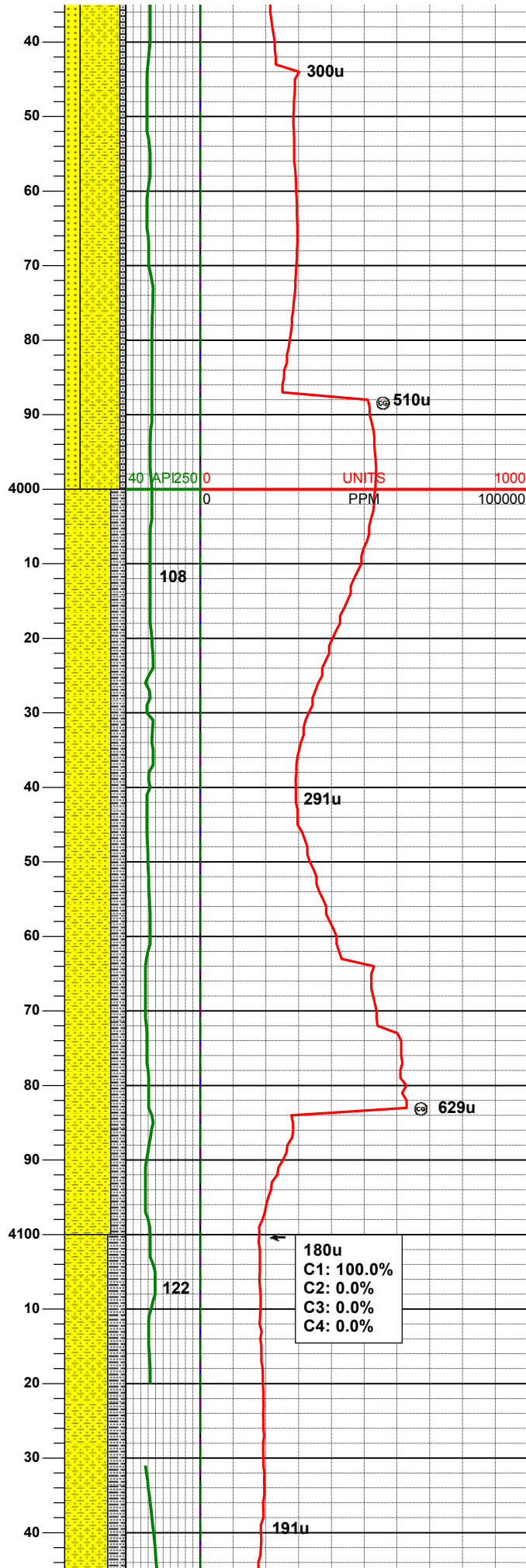
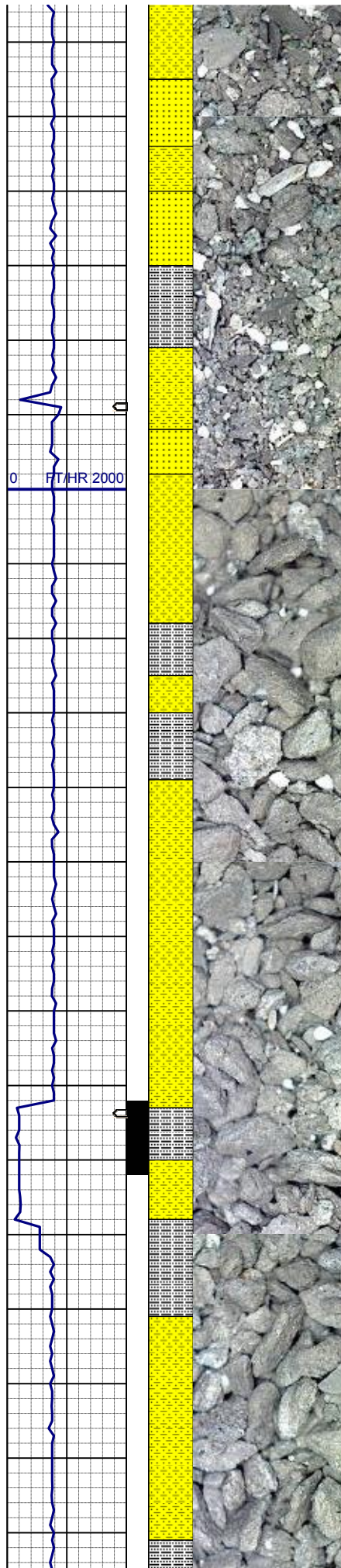
SS: ltgy-gy-trnsl, sbang-ang, fgr, psrt, wrnnd, arg cmt, abnt lit frag, abnt glau
SHYSS: ltgy-gy, s&p ip, sbang, v fri, vfgr, psrt, wrnnd, abnt cly, arg cmt, sl calc
SLTYSH: ltgy-gy, sbplty-sbblky, v sft, gt-slty tex, arg cmt

MD	3553'
INC	8.0°
AZM	23.8°
TVD	3540.56'

MD	3648'
INC	7.4°
AZM	19.4°
TVD	3634.71'

SS: ltgy-gy-trnsl, sbang-ang, fgr, psrt, wrnnd, arg cmt, abnt lit frag, abnt glau
SLTYSH: ltgy-gy, sbplty-sbblky, v sft, gt-slty tex, arg cmt
SHYSS: ltgy-gy, s&p ip, sbang, v fri, vfgr, psrt, wrnnd, abnt cly, arg cmt, sl calc

232u
C1: 100.0%
C2: 0.0%
C3: 0.0%
C4: 0.0%



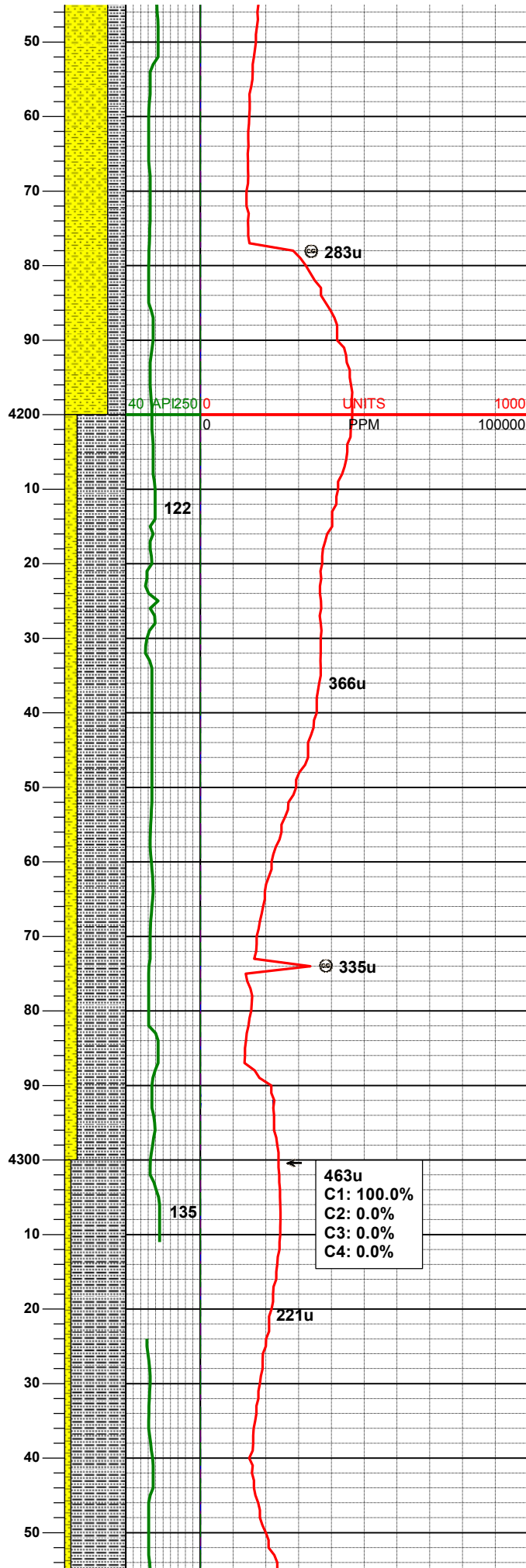
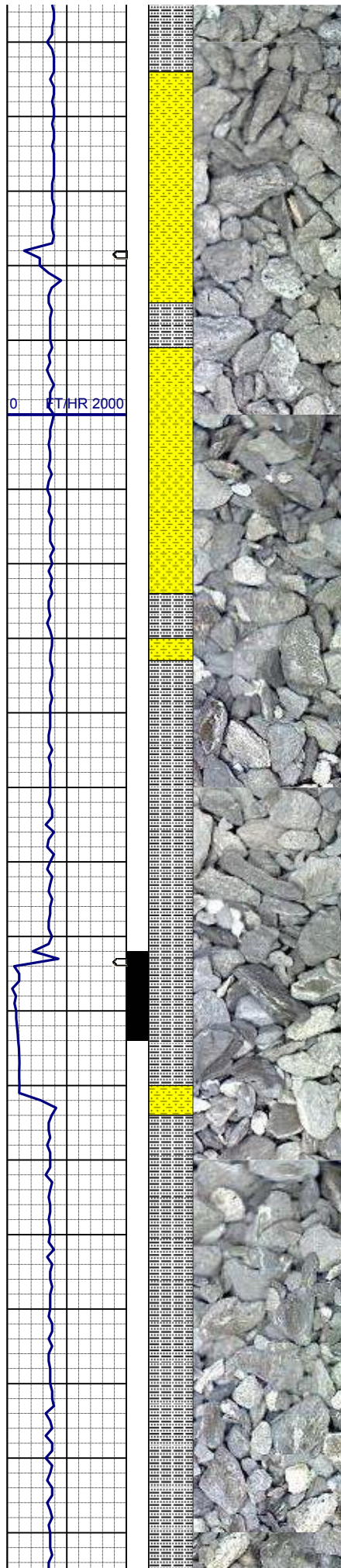
SHYSS: ltgy-gy, s&p ip, sbang, v fri,
vfgr, psrt, wrndd, abnt cly, arg cmt, sl
calc
SS: ltgy-gy-trnsl, sbang-ang, fgr, psrt,
wrndd, arg cmt, abnt lit frag, abnt glau
SLTYSH: ltgy-gy, sbplty-sbblky, v sft,
gt-slty tex, arg cmt

MD 4027'
INC 4.7°
AZM 39.4°
TVD 4012.00'

SHYSS: ltgy-gy, s&p ip, sbang, v fri,
vfgr, psrt, wrndd, abnt cly, arg cmt, sl
calc
SLTYSH: ltgy-gy, sbplty-sbblky, v sft,
gt-slty tex, arg cmt

MD 4122'
INC 5.2°
AZM 43.3°
TVD 4106.65'

SHYSS: ltgy-gy, s&p ip, sbang, v fri



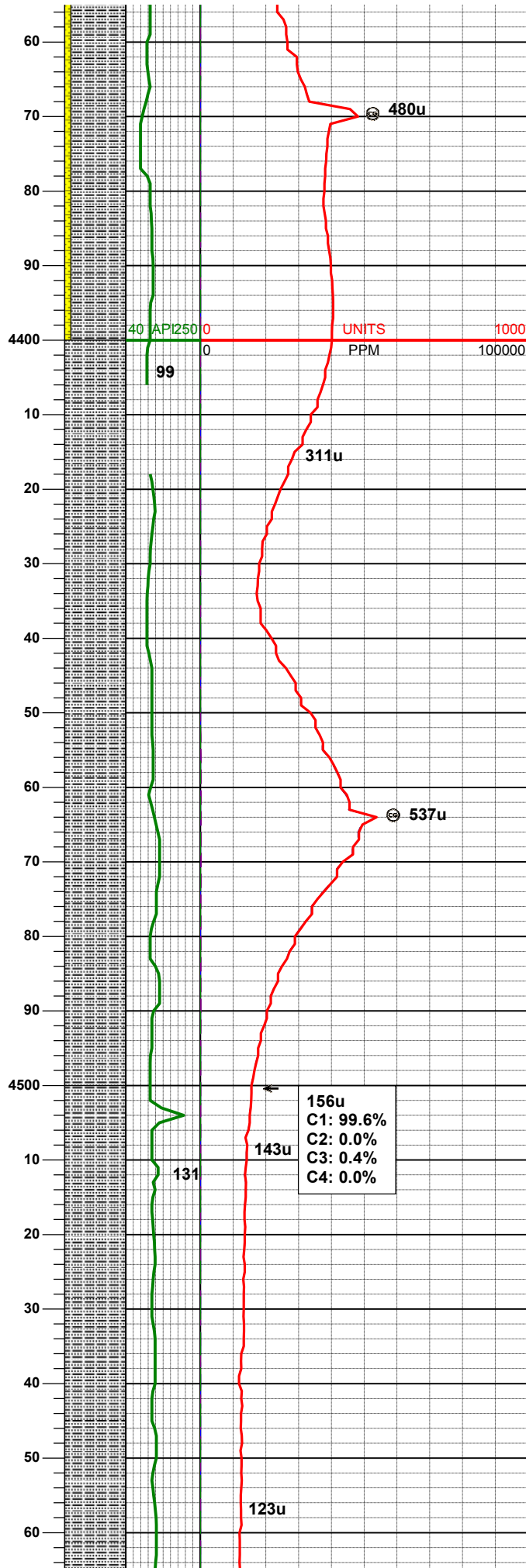
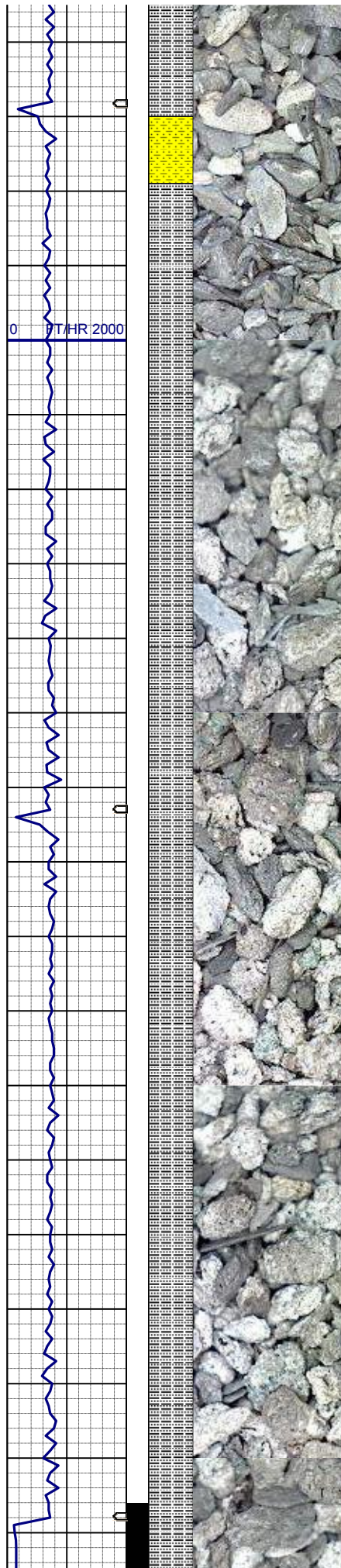
SHYSS: ltgy-gy, s&p ip, sbang, v fri,
vfgr, psrt, wrndd, abnt cly, arg cmt, sl
calc
SLTYSH: ltgy-gy, sbplty-sbblky, v sft,
gt-slty tex, arg cmt

MD	4217'
INC	5.5°
AZM	26.6°
TVD	4201.24'

SLTYSH: ltgy-gy, sbplty-sbblky, v sft,
gt-slty tex, arg cmt
SHYSS: ltgy-gy, s&p ip, sbang, v fri,
vfgr, psrt, wrndd, abnt cly, arg cmt, sl
calc

MD	4312'
INC	3.1°
AZM	9.7°
TVD	4295.97'

SLTYSH: ltgy-gy, sbplty-sbblky, v sft,
gt-slty tex, arg cmt
SHYSS: ltgy-gy, s&p ip, sbang, v fri,
vfgr, psrt, wrndd, abnt cly, arg cmt, sl
calc



Calc

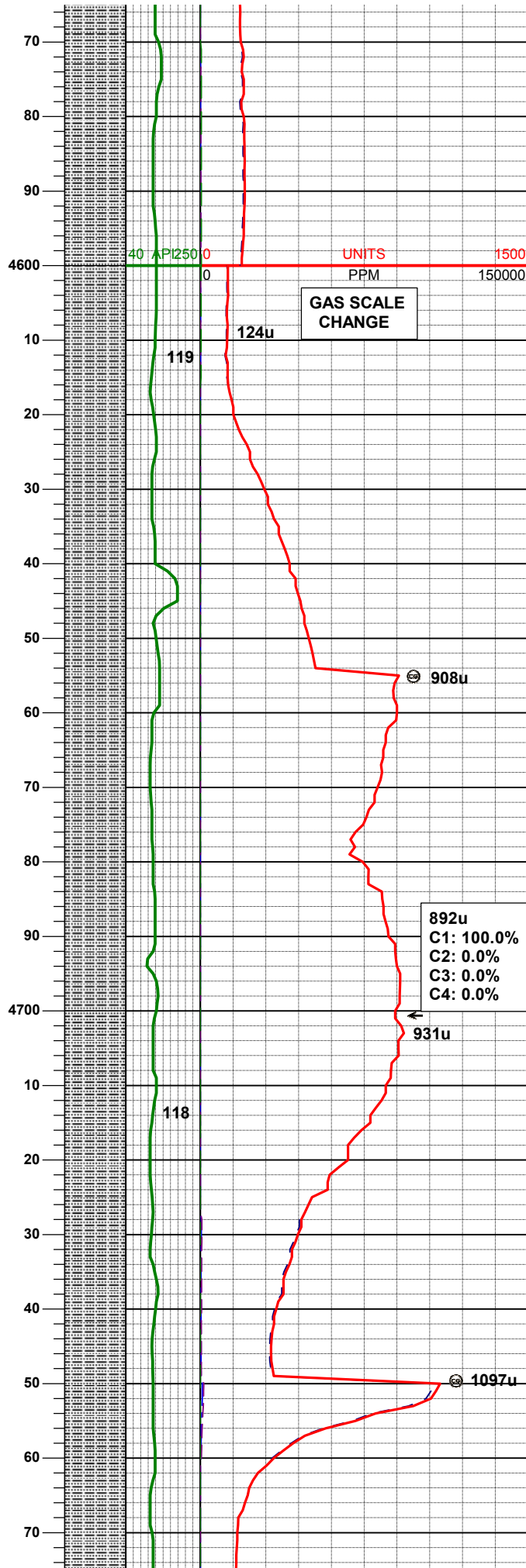
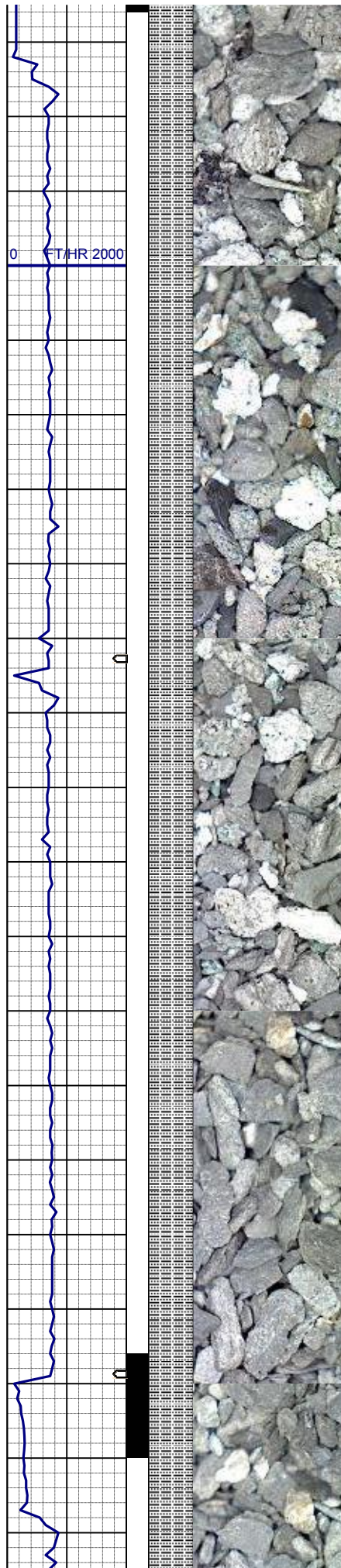
MD 4407'
INC 1.8°
AZM 1.8°
TVD 4390.88'

WT IN 8.80/ OUT8.80
VIS IN 32/ OUT 32

SLTYSH: ltgy-gy, sbplty-sbblky, v sft,
gt-slty tex, arg cmt

MD 4501'
INC 1.8°
AZM 330.1°
TVD 4484.84'

SLTYSH: ltgy-gy, sbplty-sbblky, v sft,
gt-slty tex, arg cmt

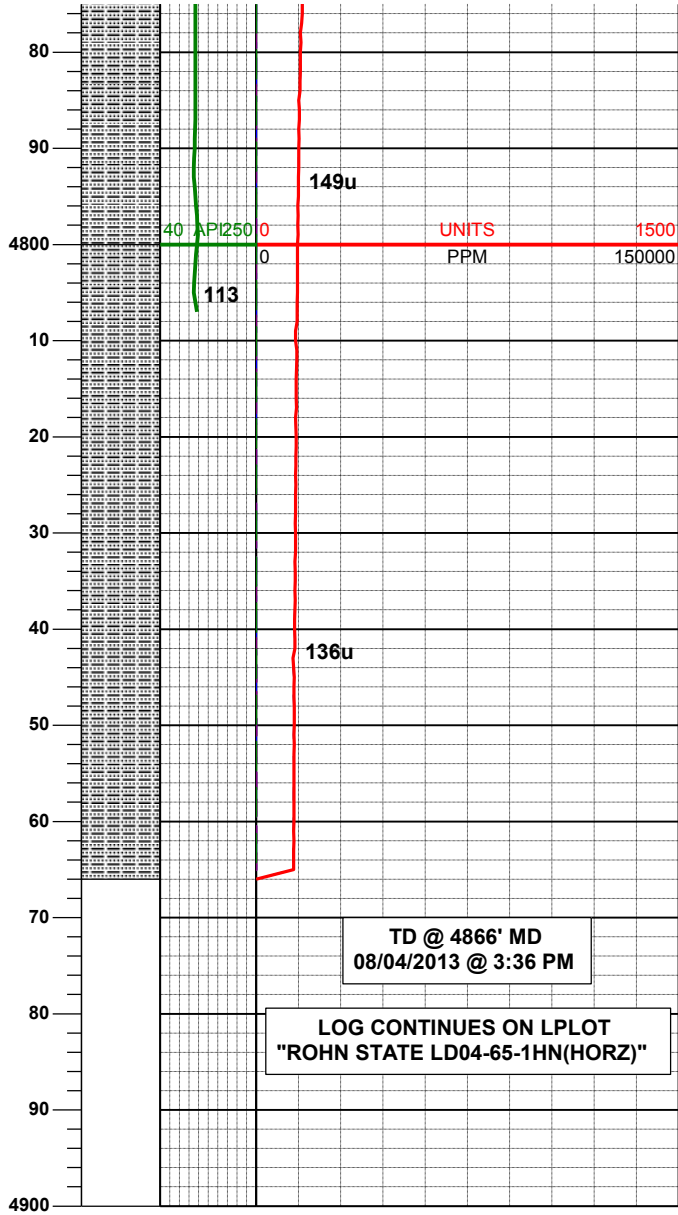
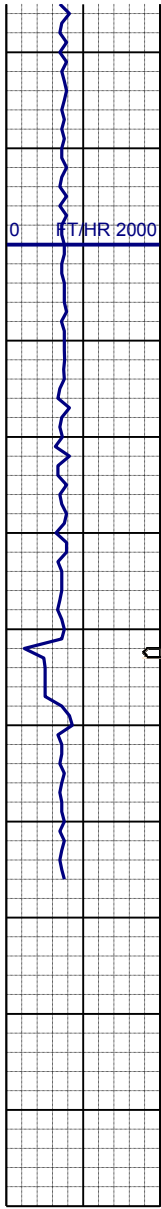


MD 4596'
INC 1.0°
AZM 39.9°
TVD 4579.81'

SLTYSH: ltgy-gy, sbplty-sbblky, v sft,
gt-slty tex, arg cmt

MD 4691'
INC 2.1°
AZM 45.4°
TVD 4674.78'

SLTYSH: ltgy-gy, sbplty-sbblky, v sft,
gt-slty tex, arg cmt



MD 4786'
INC 2.1°
AZM 351.6°
TVD 4769.72'

WT IN 9.00/ OUT9.00
VIS IN 33/ OUT 33

SLTYSH: ltgy-gy, sbplty-sbblky, v sft,
gt-slty tex, arg cmt

TD @ 4866' MD
08/04/2013 @ 3:36 PM

LOG CONTINUES ON L PLOT
"ROHN STATE LD04-65-1HN(HORZ)"