

**ANADARKO PETROLEUM CORP - EBUS
DO NOT MAIL - PO BOX 4995
THE WOODLANDS, Texas**

Butterball 3N-15HZ

Majors 29

Post Job Summary **Cement Surface Casing**

Prepared for:
Date Prepared: 12/10/2013
Version: 1

Service Supervisor: BULINSKI, MATTHEW

Submitted by: FINNEY, SEAN

HALLIBURTON

Wellbore Geometry

Job Tubulars					MD		Shoe Joint Length ft
Type	Description	Size in	ID in	Wt lbm/ft	Top ft	Bottom ft	
Casing	9 5/8" Surface Casing	9.63	8.921	36.00	0.00	1,028.00	42.00
Open Hole Section	13 1/2" Open Hole Section		13.500		0.00	1,028.00	0.00

HALLIBURTON

Pumping Schedule

Stage / Plug #	Fluid #	Fluid Type	Fluid Name	Surface Density lbm/gal	Avg Rate bbl/min	Surface Volume	Downhole Volume
1	1	Spacer	Fresh Water Spacer	8.33	4.00	10.0 bbl	10.0 bbl
1	2	Spacer	Mud Flush	8.40	4.00	12.0 bbl	12.0 bbl
1	1	Spacer	Fresh Water Spacer	8.33	5.00	10.0 bbl	10.0 bbl
1	3	Cement Slurry	SwiftCem B2	14.20	5.50	404.0 sacks	404.0 sacks

Fluids Pumped

Stage/Plug # 1 Fluid 1: Fresh Water Spacer
DUMMY MUD / FLUSH / SPACER SBC MATERIAL

Fluid Density: 8.33 lbm/gal
Fluid Volume: 10.00 bbl
Pump Rate: 4.00 bbl/min

Stage/Plug # 1 Fluid 2: Mud Flush
DUMMY MUD / FLUSH / SPACER SBC MATERIAL
42 gal/bbl Mud Flush III
3.5 lbm/bbl Mud Flush III

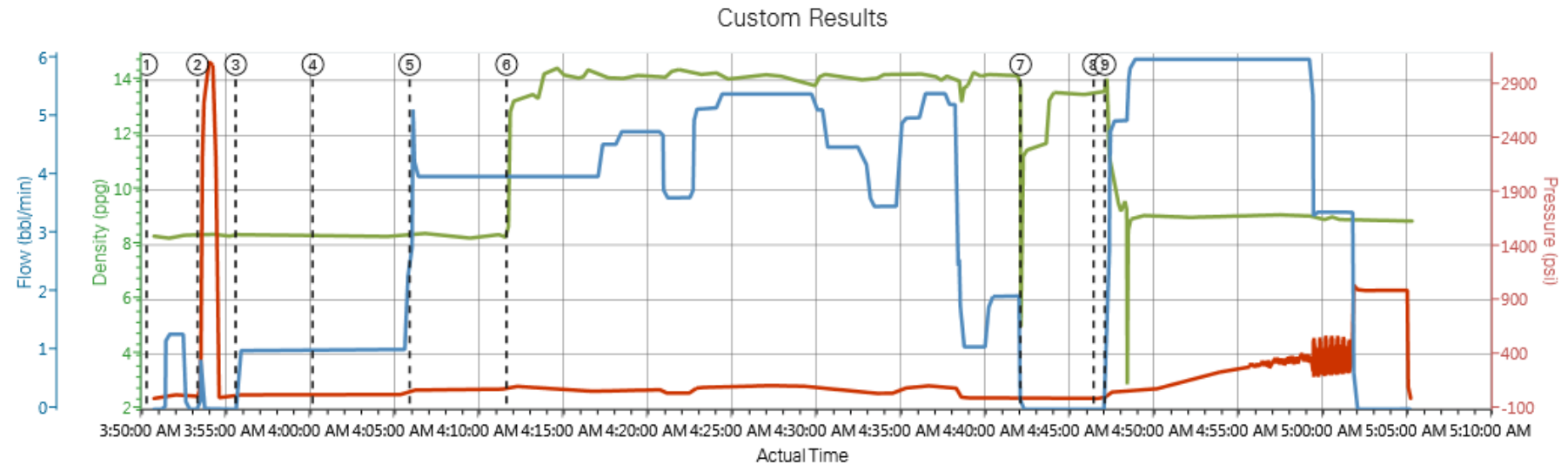
Fluid Density: 8.40 lbm/gal
Fluid Volume: 12.00 bbl
Pump Rate: 4.00 bbl/min

Stage/Plug # 1 Fluid 3: SwiftCem B2
SWIFTCM (TM) SYSTEM

Fluid Weight: 14.20 lbm/gal
Slurry Yield: 1.55 ft³/sack
Total Mixing Fluid: 7.68 Gal
Surface Volume: 404.0 sacks
Sacks: 404.0 sacks
Calculated Fill: 900.00 ft
Calculated Top of Fluid: 0.00 ft

HALLIBURTON

Data Acquisition



DH Density (ppg) PS Pump Press (psi) Comb Pump Rate (bbl/min)

① Start Job 8.3;-0.83;0	④ Pump Spacer 2 8.36;32.92;1.02	⑦ Shutdown 11.34;-2.71;0	⑩ Bump Plug n/a;n/a;n/a
② Pressure Test 8.37;1508.56;0	⑤ Pump Spacer 1 8.34;81.67;4.6	⑧ DropTop Plug 13.6;0.1;0	⑪ End Job n/a;n/a;n/a
③ Pump Spacer 1 8.38;47.92;0.99	⑥ Pump Cement 12.96;102.29;3.98	⑨ Pump Displacement 11.95;29.17;2.52	

HALLIBURTON

Service Supervisor Reports

Job Log

Date/Time	Chart #	Activity Code	Pump Rate	Cum Vol	Pump		Pressure (psig)		Comments
09/22/2013 23:30		Arrive at Location from Service Center							Arrived 1.5hrs early, rig is Tripping out DP
09/22/2013 23:35		Assessment Of Location Safety Meeting							Hazard Hunt on location before spotting in trucks
09/22/2013 23:45		Safety Meeting - Pre Rig-Up							JSA on rigging up bulk trucks and iron to rig
09/22/2013 23:50		Rig-Up Equipment							
09/23/2013 00:30		Rig-Up Completed							
09/23/2013 03:30		Safety Meeting - Pre Job							JSA with Company Man, Rig hands, and HES hands on pump schedule
09/23/2013 04:00		Start Job							
09/23/2013 04:01		Test Lines							3000psi Pressure Test Lines to Rig Floor
09/23/2013 04:04		Pump Spacer 1	4	10					10bbls H2O spacer
09/23/2013 04:10		Pump Spacer 2	4	12				45.0	12bbls Mudflush spacer
09/23/2013 04:16		Pump Spacer 1	5	10				50.0	10bbls H2O spacer
09/23/2013 04:20		Pump Cement	5.5	111.5				130.0	404sks Swiftcem, 14.2ppg, 1.55yield, 7.68gal/sk, Mixed with rig water and # verify by pressurized mud scales 3x's... Good Returns throughout
09/23/2013 04:51		Shutdown							
09/23/2013 04:54		Drop Top Plug							Disconnect Quick latch swedge and drop plug....
09/23/2013 04:55		Pump Displacement	5.5	76				230.0	H2O displacement, Good returns throughout... 15bbls cmt back to surface
09/23/2013 05:11		Bump Plug	3					995.0	Slowed down last 20bbls to 3bbl/min to bump... Plug landed at 355psi and brought up to 995psi for 3mins
09/23/2013 05:14		Check Floats							Floats Held
09/23/2013 05:15		End Job							
09/23/2013 05:20		Safety Meeting - Pre Rig-Down							JSA with HES hands on rigging down bulk trucks and iron from rig
09/23/2013 05:25		Rig-Down Equipment							
09/23/2013 06:15		Rig-Down Completed							
09/23/2013 06:25		Safety Meeting - Departing Location							JSA on pre-tripping trucks and driving back to Brighton Yard

The Road to Excellence Starts with Safety

Sold To #: 300466	Ship To #: 3106773	Quote #:	Sales Order #: 900763968
Customer: ANADARKO PETROLEUM CORP - EBUS		Customer Rep: Balkenbush, Bob	
Well Name: Butterball		Well #: 3N-15HZ	API/UWI #:
Field:	City (SAP): FIRESTONE	County/Parish: Weld	State: Colorado
Contractor: Majors		Rig/Platform Name/Num: Majors 29	
Job Purpose: Cement Surface Casing			
Well Type: Development Well		Job Type: Cement Surface Casing	
Sales Person: FLING, MATTHEW		Srvc Supervisor: BULINSKI, MATTHEW	MBU ID Emp #: 483865

Job Personnel

HES Emp Name	Exp Hrs	Emp #	HES Emp Name	Exp Hrs	Emp #	HES Emp Name	Exp Hrs	Emp #
BULINSKI, MATTHEW J	0.0	483865	CARPENTER, JACOB P	0.0	499500	Simmons, Keaton	0.0	524850
VIATOR, JASON R.	0.0	550394						

Equipment

HES Unit #	Distance-1 way	HES Unit #	Distance-1 way	HES Unit #	Distance-1 way	HES Unit #	Distance-1 way
10246780C	30 mile	10988836C	30 mile	11036295C	30 mile	11542778	30 mile
11605598	30 mile						

Job Hours

Date	On Location Hours	Operating Hours	Date	On Location Hours	Operating Hours	Date	On Location Hours	Operating Hours

TOTAL Total is the sum of each column separately

Job

Formation Name	Formation Depth (MD)	Top	Bottom	Form Type	Job depth MD	Job Depth TVD	Wk Ht Above Floor	Perforation Depth (MD)	From	To	Deparred Loc
				BHST	1028. ft	1028. ft					

Job Times

Date	Time	Time Zone
22 - Sep - 2013	20:30	MST
22 - Sep - 2013	23:30	MST
23 - Sep - 2013	04:00	MST
23 - Sep - 2013	05:15	MST
23 - Sep - 2013	06:30	MST

Well Data

Description	New / Used	Max pressure psig	Size in	ID in	Weight lbm/ft	Thread	Grade	Top MD ft	Bottom MD ft	Top TVD ft	Bottom TVD ft
13 1/2" Open Hole Section				13.5				.	1028.		
9 5/8" Surface Casing	Unknown		9.625	8.921	36.		J-55	.	1028.		

Sales/Rental/3rd Party (HES)

Description	Qty	Qty uom	Depth	Supplier
CMT CASING EQUIPMENT BOM	1	JOB		
MILEAGE FOR CEMENTING CREW,ZI	30	MI		
ZI FUEL SURCHG-CARS/PICKUPS<1 1/2TON	30	MI		
KIT,HALL WELD-A	1	EA		
CNTRLZR, 9 5/8x13 3/4,#500-0963-1375	6	EA		
Description	Qty	Qty uom	Depth	Supplier

PLUG,CMTG, TOP, 9 5/8, HWE, 8.16 MIN/9.06 MA					1	EA			
COLLAR-STOP-9 5/8"-FRICTION-HINGED					2	EA			
BASKET - CEMENT - 9-5/8 CSG X 12-1/4					1	EA			
Fluid Data									
Stage/Plug #: 1									
Fluid #	Stage Type	Fluid Name	Qty	Qty uom	Mixing Density lbm/gal	Yield ft ³ /sk	Mix Fluid Gal/sk	Rate bbl/min	Total Mix Fluid Gal/sk
1	Fresh Water Spacer		10.00	bbl	8.33			4.0	
2	Mud Flush		12.00	bbl	8.4			4.0	
42 gal/bbl		MUD FLUSH III - SBM (528788)							
3.5 lbm/bbl		MUD FLUSH III, 40 LB SACK (101633304)							
1	Fresh Water Spacer		10.00	bbl	8.33			5.0	
3	SwiftCem B2	SWIFTCM (TM) SYSTEM (452990)	404.0	sacks	14.2	1.55	7.68	5.5	7.68
7.68 Gal		FRESH WATER							
Calculated Values			Pressures		Volumes				
Displacement		Shut In: Instant		Lost Returns		Cement Slurry		Pad	
Top Of Cement		5 Min		Cement Returns 15		Actual Displacement 76		Treatment	
Frac Gradient		15 Min		Spacers 32		Load and Breakdown		Total Job	
Rates									
Circulating		Mixing		Displacement		Avg. Job			
Cement Left In Pipe		Amount	42 ft	Reason	Shoe Joint				
Frac Ring # 1 @	ID	Frac ring # 2 @	ID	Frac Ring # 3 @	ID	Frac Ring # 4 @	ID		
The Information Stated Herein Is Correct				Customer Representative Signature					

