

ANADARKO PETROLEUM CORP - EBUS

Howard 27N-28HZ

**MAJORS 42**

# **Post Job Summary**

## **Cement Surface Casing**

Date Prepared: 7/3/2013  
Version: 1

Service Supervisor: BULINSKI, MATTHEW

Submitted by: LANSDALE, JUSTIN

# HALLIBURTON

## ***Pumping Schedule***

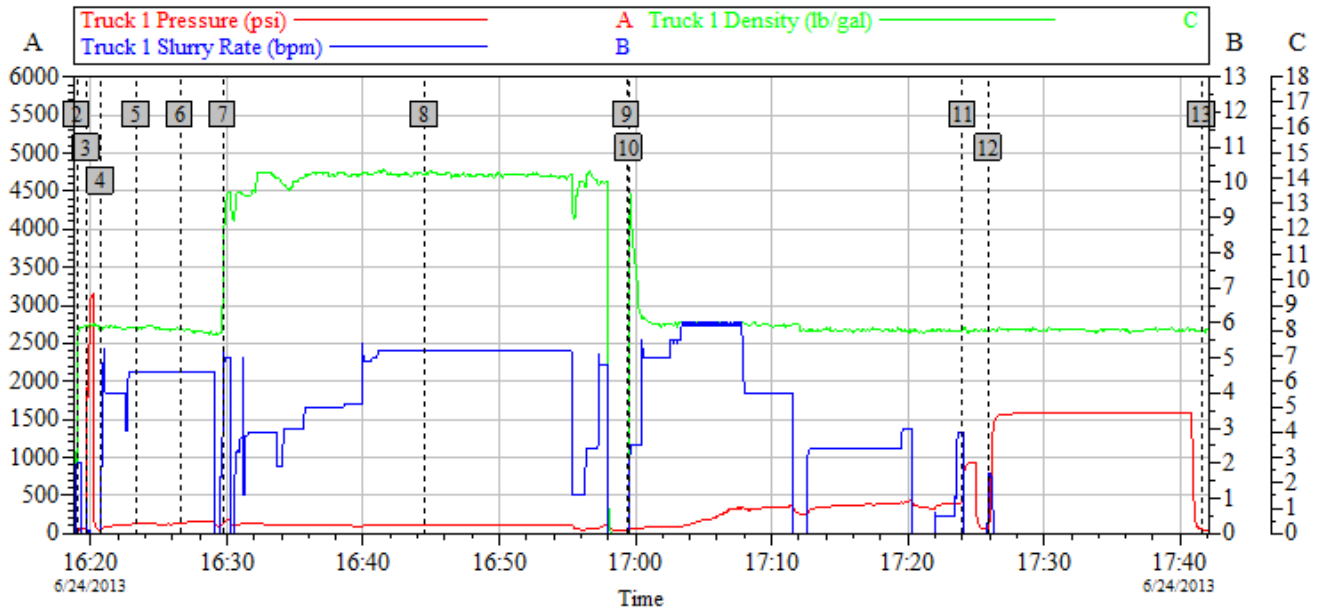
---

<b>Stage /Plug #</b>	<b>Fluid #</b>	<b>Fluid Type</b>	<b>Fluid Name</b>	<b>Surface Density lbm/gal</b>	<b>Avg Rate bbl/min</b>	<b>Surface Volume</b>	<b>Downhole Volume</b>
1	1	Spacer	Fresh Water Spacer	8.33	4.00	10.0 bbl	10.0 bbl
1	2	Spacer	Mud Flush	0.00	4.00	12.0 bbl	12.0 bbl
1	3	Spacer	Fresh Water Spacer	0.00	4.00	10.0 bbl	10.0 bbl
1	4	Cement Slurry	SwiftCem B2	14.20	5.00	385.0 sacks	106.0 bbl

# HALLIBURTON

## Data Acquisition

### Anadarko Howard 27N-28HZ Surface 6-24-13



Global Event Log					
2	Start Job	16:18:58	3	Test Lines	16:19:40
4	Pump Spacer 1	16:20:44	5	Pump Spacer 2	16:23:21
6	Pump Spacer 1	16:26:34	7	Pump Cement	16:29:42
8	Shutdown	16:44:31	9	Drop Top Plug	16:59:21
10	Pump Displacement	16:59:30	11	Bump Plug	17:24:01
12	Other	17:25:54	13	End Job	17:41:34

Customer:	Job Date: 24-Jun-2013	Sales Order #: 900537838
Well Description:	UWI:	

OptiCem v6.4.10  
24-Jun-13 17:53

# HALLIBURTON

## Service Supervisor Reports

### Job Log

Date/Time	Chart #	Activity Code	Pump Rate	Cum Vol	Pump	Pressure (psig)	Comments
06/24/2013 14:00		Arrive at Location from Service Center					
06/24/2013 14:05		Assessment Of Location Safety Meeting					Hazard hunt on location before spotting trucks
06/24/2013 16:18		Start Job					
06/24/2013 16:19		Test Lines					3000psi pressure test lines
06/24/2013 16:20		Pump Spacer 1	4	10		140.0	10bbls H2O Spacer
06/24/2013 16:23		Pump Spacer 2	4	12		130.0	12bbls Mud Flush Spacer
06/24/2013 16:26		Pump Spacer 1	4	10		110.0	10bbls H2O Spacer
06/24/2013 16:29		Pump Cement	5	106		120.0	385sks SwiftCem, 14.2ppg, 1.54yield, 7.67gal/sk, Mixed with rig water and # verify by pressurized Mud Scales
06/24/2013 16:44		Shutdown					
06/24/2013 16:59		Drop Top Plug					Pre-Loaded
06/24/2013 16:59		Pump Displacement	5	76		230.0	H2O Displacement, Good returns throughout... Cmt to surface at
06/24/2013 17:24		Bump Plug	3				Slowed down last 20bbls to 3bbl/min... Plug landed at 320psi and brought to 810psi for 2mins... 10bbls cmt to surface
06/24/2013 17:25		Other					1500psi Csg Test 15mins
06/24/2013 17:26		Check Floats					Floats Held
06/24/2013 17:41		End Job					

*The Road to Excellence Starts with Safety*

<b>Sold To #:</b> 300466	<b>Ship To #:</b> 3005103	<b>Quote #:</b>	<b>Sales Order #:</b> 900537838
<b>Customer:</b> ANADARKO PETROLEUM CORP - EBUS		<b>Customer Rep:</b> PORTER, BOB	
<b>Well Name:</b> Howard		<b>Well #:</b> 27N-28HZ	<b>API/UWI #:</b>
<b>Field:</b> WATTEBERG	<b>City (SAP):</b> DACONO	<b>County/Parish:</b> Weld	<b>State:</b> Colorado
<b>Contractor:</b> MAJORS		<b>Rig/Platform Name/Num:</b> MAJORS 42	
<b>Job Purpose:</b> Cement Surface Casing			
<b>Well Type:</b> Development Well		<b>Job Type:</b> Cement Surface Casing	
<b>Sales Person:</b> FLING, MATTHEW		<b>Srvc Supervisor:</b> BULINSKI, MATTHEW	<b>MBU ID Emp #:</b> 483865

**Job Personnel**

HES Emp Name	Exp Hrs	Emp #	HES Emp Name	Exp Hrs	Emp #	HES Emp Name	Exp Hrs	Emp #
BULINSKI, MATTHEW J	0.0	483865	CARPENTER, JACOB P	0.0	499500	JEWELL, WILLIAM Uris	0.0	503358

**Equipment**

HES Unit #	Distance-1 way	HES Unit #	Distance-1 way	HES Unit #	Distance-1 way	HES Unit #	Distance-1 way
10866493C	20 mile	11542778	20 mile	11562562	20 mile	11605598	20 mile

**Job**

**Job Times**

Formation Name	Formation Depth (MD) Top	Bottom	Called Out	Date	Time	Time Zone	
				24 - Jun - 2013	10:30	MST	
<b>Form Type</b>		<b>BHST</b>	<b>On Location</b>	24 - Jun - 2013	14:00	MST	
<b>Job depth MD</b>	1032. ft	<b>Job Depth TVD</b>	1032. ft	<b>Job Started</b>	24 - Jun - 2013	16:18	MST
<b>Water Depth</b>		<b>Wk Ht Above Floor</b>		<b>Job Completed</b>	24 - Jun - 2013	17:41	MST
<b>Perforation Depth (MD) From</b>		<b>To</b>		<b>Departed Loc</b>	24 - Jun - 2013	18:30	MST

**Fluid Data**

**Stage/Plug #: 1**

Fluid #	Stage Type	Fluid Name	Qty	Qty uom	Mixing Density lbm/gal	Yield ft <sup>3</sup> /sk	Mix Fluid Gal/sk	Rate bbl/min	Total Mix Fluid Gal/sk
1	Fresh Water Spacer		10.00	bbl	8.33	.0	.0	.0	
2	Mud Flush		12.00	bbl	.	.0	.0	.0	
	42 gal/bbl	MUD FLUSH III - SBM (528788)							
	24 lbm/bbl	MUD FLUSH III, 40 LB SACK (101633304)							
3	Fresh Water Spacer		10.00	bbl	.	.0	.0	.0	
4	SwiftCem B2	SWIFTCEM (TM) SYSTEM (452990)	385.0	sacks	14.2	1.54	7.67		7.67
	0.125 lbm	POLY-E-FLAKE (101216940)							
	7.67 Gal	FRESH WATER							

<i>The Information Stated Herein Is Correct</i>	<b>Customer Representative Signature</b>
---	--

