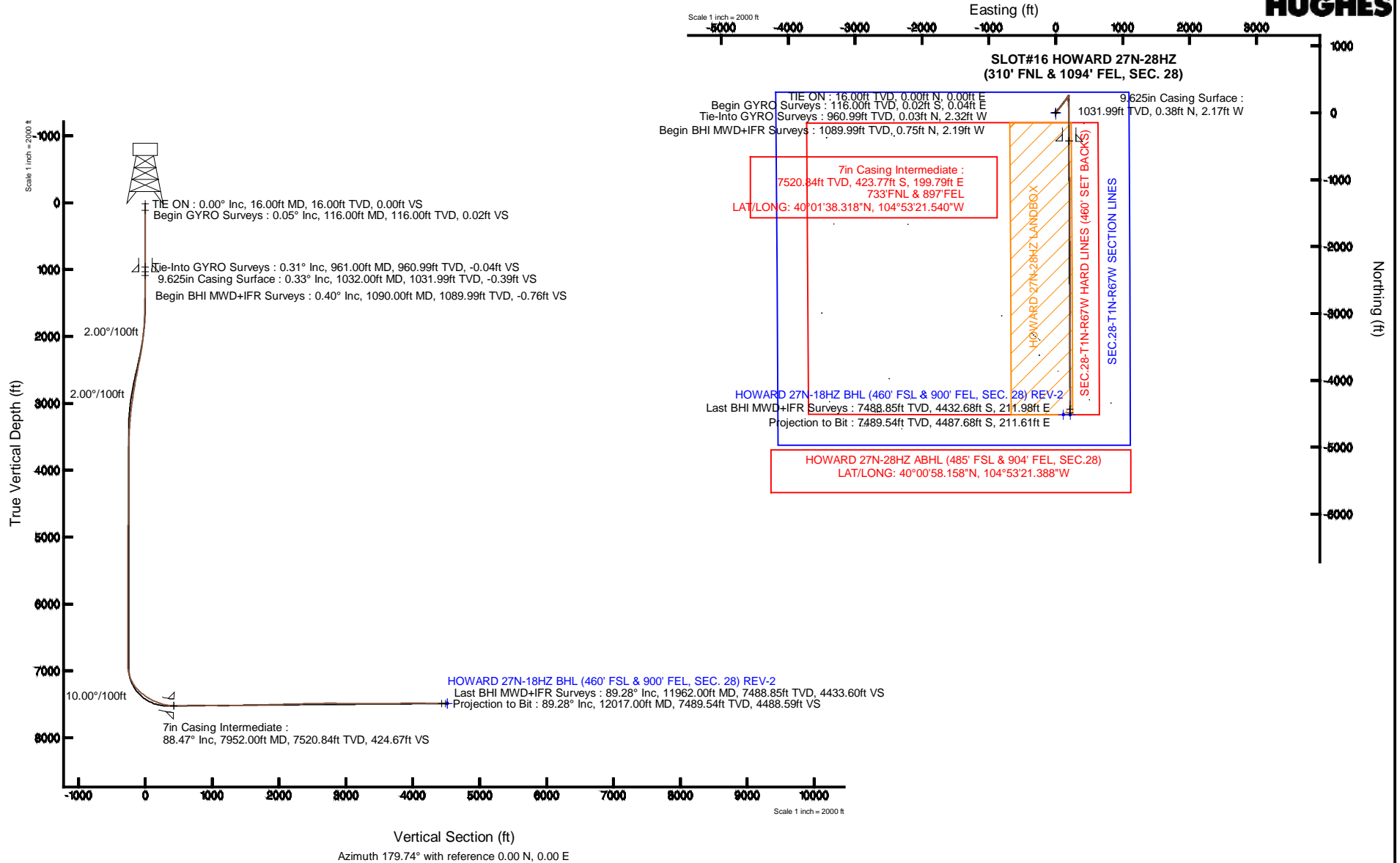


KERR-MCGEE OIL & GAS ONSHORE LP

Location: COLORADO Slot: SLOT#16 HOWARD 27N-28HZ (310' FNL & 1094' FEL, SEC. 28)
 Field: WELD COUNTY (KERR MCGEE) Well: HOWARD 27N-28HZ
 Facility: SEC.28-T1N-R67W Wellbore: HOWARD 27N-28HZ PWB



Plot reference wellpath is: HOWARD 27N-28HZ (REV-A.Q) PWP	Grid System: NAD83 / Lambert Colorado SP, Northern Zone (501), US feet
True vertical depths are referenced to XTREME 20 (16' KB) (RKB)	North Reference: True north
Measured depths are referenced to XTREME 20 (16' KB) (RKB)	Scale: True distance
XTREME 20 (16' KB) (RKB) to Mean Sea Level: 4999 feet	Depths are in feet
Mean Sea Level to Mud line (At Slot: SLOT#16 HOWARD 27N-28HZ (310' FNL & 1094' FEL, SEC. 28)): 0 feet	Created by: precain on 07/Jan/2014
Coordinates are in feet referenced to Slot	



Actual Wellpath Report

HOWARD 27N-28HZ AWP

Page 1 of 6

REFERENCE WELLPATH IDENTIFICATION			
Operator	KERR-MCGEE OIL & GAS ONSHORE LP	Slot	SLOT#16 HOWARD 27N-28HZ (310' FNL & 1094' FEL, SEC. 28)
Area	COLORADO	Well	HOWARD 27N-28HZ
Field	WELD COUNTY (KERR MCGEE)	Wellbore	HOWARD 27N-28HZ AWB
Facility	SEC.28-T1N-R67W		

REPORT SETUP INFORMATION			
Projection System	NAD83 / Lambert Colorado SP, Northern Zone (501), US feet	Software System	WellArchitect® 4.0.0
North Reference	True	User	Precain
Scale	0.999964	Report Generated	07/Jan/2014 at 17:01
Convergence at slot	n/a	Database/Source file	WellArchitectDB/_HOWARD_27N-28HZ_AWB.xml

WELLPATH LOCATION						
	Local coordinates		Grid coordinates		Geographic coordinates	
	North[ft]	East[ft]	Easting[US ft]	Northing[US ft]	Latitude	Longitude
Slot Location	1416857.14	2716926.46	3170812.59	1253806.63	40°01'42.506"N	104°53'24.108"W
Facility Reference Pt			316923.76	121463.46	36°32'36.656"N	114°37'52.006"W
Field Reference Pt			3197771.84	1268891.29	40°04'09.600"N	104°47'36.000"W

WELLPATH DATUM			
Calculation method	Minimum curvature	XTREME 20 (16' KB) (RKB) to Facility Vertical Datum	4999.00ft
Horizontal Reference Pt	Slot	XTREME 20 (16' KB) (RKB) to Mean Sea Level	4999.00ft
Vertical Reference Pt	XTREME 20 (16' KB) (RKB)	XTREME 20 (16' KB) (RKB) to Mud Line at Slot (SLOT#16 HOWARD 27N-28HZ (310' FNL & 1094' FEL, SEC. 28))	4999.00ft
MD Reference Pt	XTREME 20 (16' KB) (RKB)	Section Origin	N 0.00, E 0.00 ft
Field Vertical Reference	Mean Sea Level	Section Azimuth	179.74°

Actual Wellpath Report

HOWARD 27N-28HZ AWP

Page 2 of 6

REFERENCE WELLPATH IDENTIFICATION

Operator	KERR-MCGEE OIL & GAS ONSHORE LP	Slot	SLOT#16 HOWARD 27N-28HZ (310' FNL & 1094' FEL, SEC. 28)
Area	COLORADO	Well	HOWARD 27N-28HZ
Field	WELD COUNTY (KERR MCGEE)	Wellbore	HOWARD 27N-28HZ AWB
Facility	SEC.28-T1N-R67W		

WELLPATH DATA (110 stations) † = interpolated/extrapolated station

MD [ft]	Inclination [°]	Azimuth [°]	TVD [ft]	Vert Sect [ft]	North [ft]	East [ft]	Latitude	Longitude	DLS [°/100ft]	Comments
0.00†	0.000	123.470	0.00	0.00	0.00	0.00	40°01'42.506"N	104°53'24.108"W	0.00	
16.00	0.000	123.470	16.00	0.00	0.00	0.00	40°01'42.506"N	104°53'24.108"W	0.00	TIE ON
116.00	0.050	123.470	116.00	0.02	-0.02	0.04	40°01'42.506"N	104°53'24.108"W	0.05	Begin GYRO Surveys
216.00	0.120	182.720	216.00	0.15	-0.15	0.07	40°01'42.504"N	104°53'24.107"W	0.10	
316.00	0.250	193.860	316.00	0.47	-0.47	0.01	40°01'42.501"N	104°53'24.108"W	0.13	
416.00	0.280	239.900	416.00	0.80	-0.80	-0.25	40°01'42.498"N	104°53'24.111"W	0.21	
516.00	0.330	239.780	516.00	1.07	-1.07	-0.71	40°01'42.495"N	104°53'24.117"W	0.05	
616.00	0.330	271.340	616.00	1.20	-1.21	-1.25	40°01'42.494"N	104°53'24.124"W	0.18	
716.00	0.370	311.930	715.99	0.98	-0.99	-1.78	40°01'42.496"N	104°53'24.131"W	0.25	
816.00	0.310	337.420	815.99	0.51	-0.52	-2.12	40°01'42.501"N	104°53'24.135"W	0.16	
916.00	0.210	321.050	915.99	0.12	-0.13	-2.34	40°01'42.505"N	104°53'24.138"W	0.12	
961.00	0.310	37.990	960.99	-0.04	0.03	-2.32	40°01'42.506"N	104°53'24.138"W	0.74	Tie-Into GYRO Surveys
1090.00	0.400	348.310	1089.99	-0.76	0.75	-2.19	40°01'42.513"N	104°53'24.136"W	0.24	Begin BHI MWD+IFR Surveys
1183.00	0.770	353.850	1182.98	-1.70	1.69	-2.33	40°01'42.523"N	104°53'24.138"W	0.40	
1371.00	0.940	354.240	1370.96	-4.49	4.48	-2.62	40°01'42.550"N	104°53'24.142"W	0.09	
1465.00	1.000	345.850	1464.95	-6.05	6.04	-2.90	40°01'42.566"N	104°53'24.145"W	0.16	
1560.00	1.410	44.360	1559.93	-7.69	7.68	-2.28	40°01'42.582"N	104°53'24.137"W	1.30	
1652.00	2.810	55.150	1651.87	-9.78	9.78	0.36	40°01'42.603"N	104°53'24.103"W	1.58	
1744.00	4.220	55.390	1743.69	-12.97	12.99	5.00	40°01'42.634"N	104°53'24.044"W	1.53	
1836.00	5.970	53.120	1835.32	-17.73	17.78	11.61	40°01'42.682"N	104°53'23.959"W	1.91	
1927.00	7.750	48.480	1925.67	-24.60	24.69	19.99	40°01'42.750"N	104°53'23.851"W	2.05	
2019.00	8.960	43.160	2016.69	-33.89	34.03	29.54	40°01'42.842"N	104°53'23.728"W	1.56	
2111.00	10.260	42.030	2107.40	-45.16	45.34	39.92	40°01'42.954"N	104°53'23.595"W	1.43	
2203.00	11.320	35.730	2197.78	-58.53	58.76	50.68	40°01'43.087"N	104°53'23.456"W	1.72	
2295.00	12.790	35.710	2287.74	-74.08	74.36	61.90	40°01'43.241"N	104°53'23.312"W	1.60	
2387.00	13.880	36.550	2377.26	-91.15	91.49	74.42	40°01'43.410"N	104°53'23.151"W	1.20	
2479.00	13.360	36.050	2466.68	-108.55	108.95	87.24	40°01'43.583"N	104°53'22.986"W	0.58	
2571.00	14.390	36.970	2555.99	-126.22	126.68	100.37	40°01'43.758"N	104°53'22.818"W	1.14	
2663.00	13.250	37.150	2645.32	-143.70	144.22	113.62	40°01'43.931"N	104°53'22.647"W	1.24	
2754.00	12.010	37.870	2734.12	-159.43	160.00	125.73	40°01'44.087"N	104°53'22.492"W	1.37	
2846.00	11.000	36.640	2824.27	-173.98	174.60	136.84	40°01'44.231"N	104°53'22.349"W	1.13	
2938.00	10.480	33.730	2914.66	-187.94	188.60	146.73	40°01'44.370"N	104°53'22.222"W	0.82	
3030.00	8.990	30.360	3005.33	-201.06	201.76	155.00	40°01'44.500"N	104°53'22.115"W	1.73	
3122.00	8.010	30.600	3096.32	-212.75	213.48	161.90	40°01'44.616"N	104°53'22.027"W	1.07	
3213.00	6.640	38.000	3186.58	-222.32	223.09	168.37	40°01'44.711"N	104°53'21.944"W	1.83	
3305.00	5.610	39.890	3278.05	-229.94	230.73	174.53	40°01'44.786"N	104°53'21.864"W	1.14	
3397.00	4.670	41.190	3369.68	-236.18	237.00	179.88	40°01'44.848"N	104°53'21.796"W	1.03	
3488.00	4.130	41.600	3460.41	-241.40	242.24	184.49	40°01'44.900"N	104°53'21.736"W	0.59	
3580.00	3.610	35.750	3552.20	-246.21	247.07	188.38	40°01'44.948"N	104°53'21.686"W	0.71	
3670.00	3.240	30.780	3642.04	-250.68	251.55	191.34	40°01'44.992"N	104°53'21.648"W	0.53	
3762.00	1.110	15.260	3733.97	-253.77	254.64	192.91	40°01'45.022"N	104°53'21.628"W	2.38	
3847.00	0.340	193.650	3818.97	-254.32	255.19	193.06	40°01'45.028"N	104°53'21.626"W	1.71	
4103.00	0.060	21.390	4074.97	-253.70	254.58	192.93	40°01'45.022"N	104°53'21.628"W	0.16	
4358.00	0.500	332.210	4329.96	-254.82	255.69	192.46	40°01'45.033"N	104°53'21.634"W	0.18	
4614.00	0.280	356.940	4585.96	-256.43	257.30	191.91	40°01'45.049"N	104°53'21.641"W	0.11	

Actual Wellpath Report

HOWARD 27N-28HZ AWP

Page 3 of 6

REFERENCE WELLPATH IDENTIFICATION

Operator	KERR-MCGEE OIL & GAS ONSHORE LP	Slot	SLOT#16 HOWARD 27N-28HZ (310' FNL & 1094' FEL, SEC. 28)
Area	COLORADO	Well	HOWARD 27N-28HZ
Field	WELD COUNTY (KERR MCGEE)	Wellbore	HOWARD 27N-28HZ AWB
Facility	SEC.28-T1N-R67W		

WELLPATH DATA (110 stations) † = interpolated/extrapolated station

MD [ft]	Inclination [°]	Azimuth [°]	TVD [ft]	Vert Sect [ft]	North [ft]	East [ft]	Latitude	Longitude	DLS [°/100ft]	Comments
4870.00	0.560	339.200	4841.95	-258.23	259.10	191.43	40°01'45.066"N	104°53'21.647"W	0.12	
5125.00	0.810	321.750	5096.93	-260.81	261.68	189.87	40°01'45.092"N	104°53'21.667"W	0.13	
5381.00	0.890	106.830	5352.92	-261.66	262.52	190.66	40°01'45.100"N	104°53'21.657"W	0.63	
5636.00	0.840	83.570	5607.89	-261.28	262.16	194.41	40°01'45.097"N	104°53'21.609"W	0.14	
5892.00	0.400	203.010	5863.88	-260.66	261.54	195.92	40°01'45.091"N	104°53'21.589"W	0.43	
6147.00	0.230	33.380	6118.88	-260.26	261.15	195.86	40°01'45.087"N	104°53'21.590"W	0.25	
6403.00	0.260	341.090	6374.88	-261.24	262.13	195.95	40°01'45.096"N	104°53'21.589"W	0.08	
6658.00	0.310	23.970	6629.88	-262.42	263.31	196.05	40°01'45.108"N	104°53'21.588"W	0.08	
6913.00	0.350	324.400	6884.87	-263.68	264.57	195.87	40°01'45.121"N	104°53'21.590"W	0.13	
6956.00	2.260	201.800	6927.86	-263.01	263.89	195.48	40°01'45.114"N	104°53'21.595"W	5.74	
6998.00	6.590	193.330	6969.73	-259.89	260.78	194.62	40°01'45.083"N	104°53'21.606"W	10.40	
7041.00	12.070	192.820	7012.14	-253.11	253.99	193.05	40°01'45.016"N	104°53'21.626"W	12.75	
7083.00	16.660	192.170	7052.82	-242.95	243.81	190.80	40°01'44.915"N	104°53'21.655"W	10.94	
7126.00	21.360	190.700	7093.46	-229.23	230.09	188.05	40°01'44.780"N	104°53'21.691"W	10.99	
7168.00	23.900	185.210	7132.23	-213.25	214.09	185.86	40°01'44.622"N	104°53'21.719"W	7.86	
7211.00	29.040	181.390	7170.71	-194.13	194.97	184.81	40°01'44.433"N	104°53'21.732"W	12.59	
7253.00	32.610	176.860	7206.78	-172.63	173.47	185.18	40°01'44.220"N	104°53'21.727"W	10.13	
7296.00	37.900	174.570	7241.88	-147.89	148.73	187.07	40°01'43.976"N	104°53'21.703"W	12.68	
7338.00	42.920	174.810	7273.85	-120.77	121.63	189.59	40°01'43.708"N	104°53'21.671"W	11.96	
7381.00	47.630	175.230	7304.10	-90.34	91.21	192.23	40°01'43.407"N	104°53'21.637"W	10.98	
7424.00	51.000	176.470	7332.13	-57.81	58.69	194.58	40°01'43.086"N	104°53'21.607"W	8.14	
7467.00	52.130	177.600	7358.86	-24.17	25.05	196.32	40°01'42.754"N	104°53'21.584"W	3.34	
7509.00	56.080	179.390	7383.48	9.84	-8.95	197.20	40°01'42.418"N	104°53'21.573"W	10.02	
7552.00	58.760	180.000	7406.63	46.07	-45.18	197.39	40°01'42.060"N	104°53'21.571"W	6.35	
7594.00	62.230	179.120	7427.32	82.62	-81.73	197.68	40°01'41.698"N	104°53'21.567"W	8.46	
7637.00	64.170	179.000	7446.70	121.00	-120.10	198.31	40°01'41.319"N	104°53'21.559"W	4.52	
7679.00	68.280	178.060	7463.63	159.41	-158.51	199.30	40°01'40.940"N	104°53'21.546"W	10.00	
7722.00	70.230	178.200	7478.86	199.61	-198.70	200.61	40°01'40.542"N	104°53'21.529"W	4.55	
7764.00	74.310	179.040	7491.65	239.60	-238.69	201.57	40°01'40.147"N	104°53'21.517"W	9.90	
7807.00	76.420	180.560	7502.51	281.20	-280.29	201.71	40°01'39.736"N	104°53'21.515"W	5.98	
7849.00	79.270	181.030	7511.36	322.24	-321.34	201.14	40°01'39.330"N	104°53'21.522"W	6.87	
7904.00	85.860	180.580	7518.47	376.74	-375.84	200.38	40°01'38.792"N	104°53'21.532"W	12.01	
7952.00†	88.473	180.832	7520.84	424.67	-423.77	199.79	40°01'38.318"N	104°53'21.540"W	5.47	7" Casing Point
7967.00	89.290	180.910	7521.13	439.67	-438.77	199.56	40°01'38.170"N	104°53'21.543"W	5.47	
8052.00	89.440	180.710	7522.08	524.65	-523.76	198.36	40°01'37.330"N	104°53'21.558"W	0.29	
8138.00	89.900	179.730	7522.57	610.64	-609.75	198.03	40°01'36.480"N	104°53'21.562"W	1.26	
8223.00	89.660	178.760	7522.90	695.64	-694.74	199.15	40°01'35.640"N	104°53'21.548"W	1.18	
8308.00	90.830	177.960	7522.53	780.61	-779.71	201.58	40°01'34.801"N	104°53'21.517"W	1.67	
8394.00	91.170	178.450	7521.03	866.56	-865.65	204.27	40°01'33.951"N	104°53'21.482"W	0.69	
8479.00	90.210	178.540	7520.01	951.54	-950.61	206.51	40°01'33.112"N	104°53'21.453"W	1.13	
8564.00	89.530	178.740	7520.20	1036.52	-1035.59	208.52	40°01'32.272"N	104°53'21.428"W	0.83	
8649.00	89.720	179.880	7520.76	1121.51	-1120.58	209.55	40°01'31.432"N	104°53'21.414"W	1.36	
8734.00	90.300	180.110	7520.74	1206.51	-1205.58	209.56	40°01'30.592"N	104°53'21.414"W	0.73	
8820.00	90.610	179.330	7520.06	1292.51	-1291.57	209.98	40°01'29.742"N	104°53'21.409"W	0.98	
8905.00	91.690	180.010	7518.36	1377.49	-1376.55	210.46	40°01'28.903"N	104°53'21.403"W	1.50	

Actual Wellpath Report

HOWARD 27N-28HZ AWP

Page 4 of 6

REFERENCE WELLPATH IDENTIFICATION

Operator	KERR-MCGEE OIL & GAS ONSHORE LP	Slot	SLOT#16 HOWARD 27N-28HZ (310' FNL & 1094' FEL, SEC. 28)
Area	COLORADO	Well	HOWARD 27N-28HZ
Field	WELD COUNTY (KERR MCGEE)	Wellbore	HOWARD 27N-28HZ AWB
Facility	SEC.28-T1N-R67W		

WELLPATH DATA (110 stations)

MD [ft]	Inclination [°]	Azimuth [°]	TVD [ft]	Vert Sect [ft]	North [ft]	East [ft]	Latitude	Longitude	DLS [°/100ft]	Comments
9075.00	90.180	179.290	7515.58	1547.46	-1546.52	211.50	40°01'27.223"N	104°53'21.389"W	0.98	
9245.00	92.490	180.110	7511.62	1717.40	-1716.46	212.39	40°01'25.543"N	104°53'21.378"W	1.44	
9416.00	92.000	179.170	7504.92	1888.27	-1887.32	213.47	40°01'23.855"N	104°53'21.364"W	0.62	
9586.00	91.600	178.190	7499.58	2058.15	-2057.19	217.38	40°01'22.176"N	104°53'21.314"W	0.62	
9756.00	91.200	180.090	7495.43	2228.09	-2227.11	219.93	40°01'20.497"N	104°53'21.281"W	1.14	
9926.00	91.450	180.170	7491.50	2398.04	-2397.07	219.55	40°01'18.817"N	104°53'21.286"W	0.15	
10096.00	91.200	180.750	7487.57	2567.98	-2567.02	218.18	40°01'17.138"N	104°53'21.304"W	0.37	
10267.00	90.700	180.890	7484.73	2738.92	-2737.97	215.74	40°01'15.449"N	104°53'21.335"W	0.30	
10352.00	89.070	180.040	7484.90	2823.91	-2822.97	215.05	40°01'14.609"N	104°53'21.344"W	2.16	
10523.00	89.100	180.400	7487.63	2994.88	-2993.94	214.39	40°01'12.919"N	104°53'21.352"W	0.21	
10693.00	89.900	181.980	7489.12	3164.82	-3163.89	210.86	40°01'11.240"N	104°53'21.398"W	1.04	
10863.00	90.640	179.350	7488.32	3334.78	-3333.87	208.89	40°01'09.560"N	104°53'21.423"W	1.61	
11034.00	89.750	179.530	7487.73	3505.77	-3504.85	210.56	40°01'07.870"N	104°53'21.402"W	0.53	
11204.00	90.240	179.120	7487.75	3675.77	-3674.84	212.56	40°01'06.190"N	104°53'21.376"W	0.38	
11374.00	91.940	179.630	7484.51	3845.72	-3844.79	214.41	40°01'04.511"N	104°53'21.352"W	1.04	
11544.00	89.440	179.450	7482.47	4015.70	-4014.76	215.78	40°01'02.831"N	104°53'21.335"W	1.47	
11715.00	88.790	180.740	7485.11	4186.67	-4185.74	215.50	40°01'01.141"N	104°53'21.338"W	0.84	
11885.00	89.320	181.000	7487.91	4356.61	-4355.69	212.91	40°00'59.462"N	104°53'21.371"W	0.35	
11962.00	89.280	180.390	7488.85	4433.60	-4432.68	211.98	40°00'58.701"N	104°53'21.383"W	0.79	Last BHI MWD+IFR Surveys
12017.00	89.280	180.390	7489.54	4488.59	-4487.68	211.61	40°00'58.158"N	104°53'21.388"W	0.00	Projection to Bit

HOLE & CASING SECTIONS - Ref Wellbore: HOWARD 27N-28HZ AWB Ref Wellpath: HOWARD 27N-28HZ AWP

String/Diameter	Start MD [ft]	End MD [ft]	Interval [ft]	Start TVD [ft]	End TVD [ft]	Start N/S [ft]	Start E/W [ft]	End N/S [ft]	End E/W [ft]
13.5in Open Hole	16.00	1042.00	1026.00	16.00	1041.99	0.00	0.00	0.44	-2.17
9.625in Casing Surface	16.00	1032.00	1016.00	16.00	1031.99	0.00	0.00	0.38	-2.17
8.75in Open Hole	1032.00	7962.00	6930.00	1031.99	7521.06	0.38	-2.17	-433.77	199.64
7in Casing Intermediate	16.00	7952.00	7936.00	16.00	7520.84	0.00	0.00	-423.77	199.79
6.125in Open Hole	7962.00	12017.00	4055.00	7521.06	7489.54	-433.77	199.64	-4487.68	211.61

Actual Wellpath Report

HOWARD 27N-28HZ AWP

Page 5 of 6

REFERENCE WELLPATH IDENTIFICATION			
Operator	KERR-MCGEE OIL & GAS ONSHORE LP	Slot	SLOT#16 HOWARD 27N-28HZ (310' FNL & 1094' FEL, SEC. 28)
Area	COLORADO	Well	HOWARD 27N-28HZ
Field	WELD COUNTY (KERR MCGEE)	Wellbore	HOWARD 27N-28HZ AWB
Facility	SEC.28-T1N-R67W		

TARGETS									
Name	MD [ft]	TVD [ft]	North [ft]	East [ft]	Grid East [US ft]	Grid North [US ft]	Latitude	Longitude	Shape
SEC.28-T1N-R67W HARD LINES (460' SET BACKS)		4999.00	0.00	0.00	3170812.59	1253806.63	40°01'42.506"N	104°53'24.108"W	polygon
SEC.28-T1N-R67W SECTION LINES		4999.00	0.00	0.00	3170812.59	1253806.63	40°01'42.506"N	104°53'24.108"W	polygon
HOWARD 27N-18HZ BHL (460' FSL & 900' FEL, SEC. 28) REV-2		7488.00	-4513.13	215.68	3171059.30	1249295.26	40°00'57.906"N	104°53'21.336"W	point
HOWARD 27N-18HZ BHL ON PLAT (460' FSL & 1000' FEL, SEC. 28) REV-1		7488.00	-4513.13	115.68	3170959.31	1249294.57	40°00'57.906"N	104°53'22.621"W	point
HOWARD 27N-28HZ LANDBOX		7488.00	0.00	0.00	3170812.59	1253806.63	40°01'42.506"N	104°53'24.108"W	polygon

WELLPATH COMPOSITION - Ref Wellbore: HOWARD 27N-28HZ AWB					Ref Wellpath: HOWARD 27N-28HZ AWP	
Start MD [ft]	End MD [ft]	Positional Uncertainty Model	Log Name/Comment		Wellbore	
16.00	961.00	Generic gyro - continuous (Standard)	MS ENERGY GYRO SURVEYS <116-961>		HOWARD 27N-28HZ AWB	
961.00	7904.00	NaviTrak (MAGCORR,IFR)	BHI MWD+IFR SURVEYS 8 3/4" HOLE <1090-7904>		HOWARD 27N-28HZ AWB	
7904.00	11962.00	NaviTrak (MAGCORR,IFR)	BHI MWD+IFR SURVEYS 6 1/8" HOLE <7967-11962>		HOWARD 27N-28HZ AWB	
11962.00	12017.00	Blind Drilling (std)	Projection to bit		HOWARD 27N-28HZ AWB	

Actual Wellpath Report

HOWARD 27N-28HZ AWP

Page 6 of 6

REFERENCE WELLPATH IDENTIFICATION				
Operator	KERR-MCGEE OIL & GAS ONSHORE LP	Slot	SLOT#16 HOWARD 27N-28HZ (310' FNL & 1094' FEL, SEC. 28)	
Area	COLORADO	Well	HOWARD 27N-28HZ	
Field	WELD COUNTY (KERR MCGEE)	Wellbore	HOWARD 27N-28HZ AWB	
Facility	SEC.28-T1N-R67W			

WELLPATH COMMENTS				
MD [ft]	Inclination [°]	Azimuth [°]	TVD [ft]	Comment
16.00	0.000	123.470	16.00	TIE ON
116.00	0.050	123.470	116.00	Begin GYRO Surveys
961.00	0.310	37.990	960.99	Tie-Into GYRO Surveys
1090.00	0.400	348.310	1089.99	Begin BHI MWD+IFR Surveys
7952.00	88.473	180.832	7520.84	7" Casing Point
11962.00	89.280	180.390	7488.85	Last BHI MWD+IFR Surveys
12017.00	89.280	180.390	7489.54	Projection to Bit