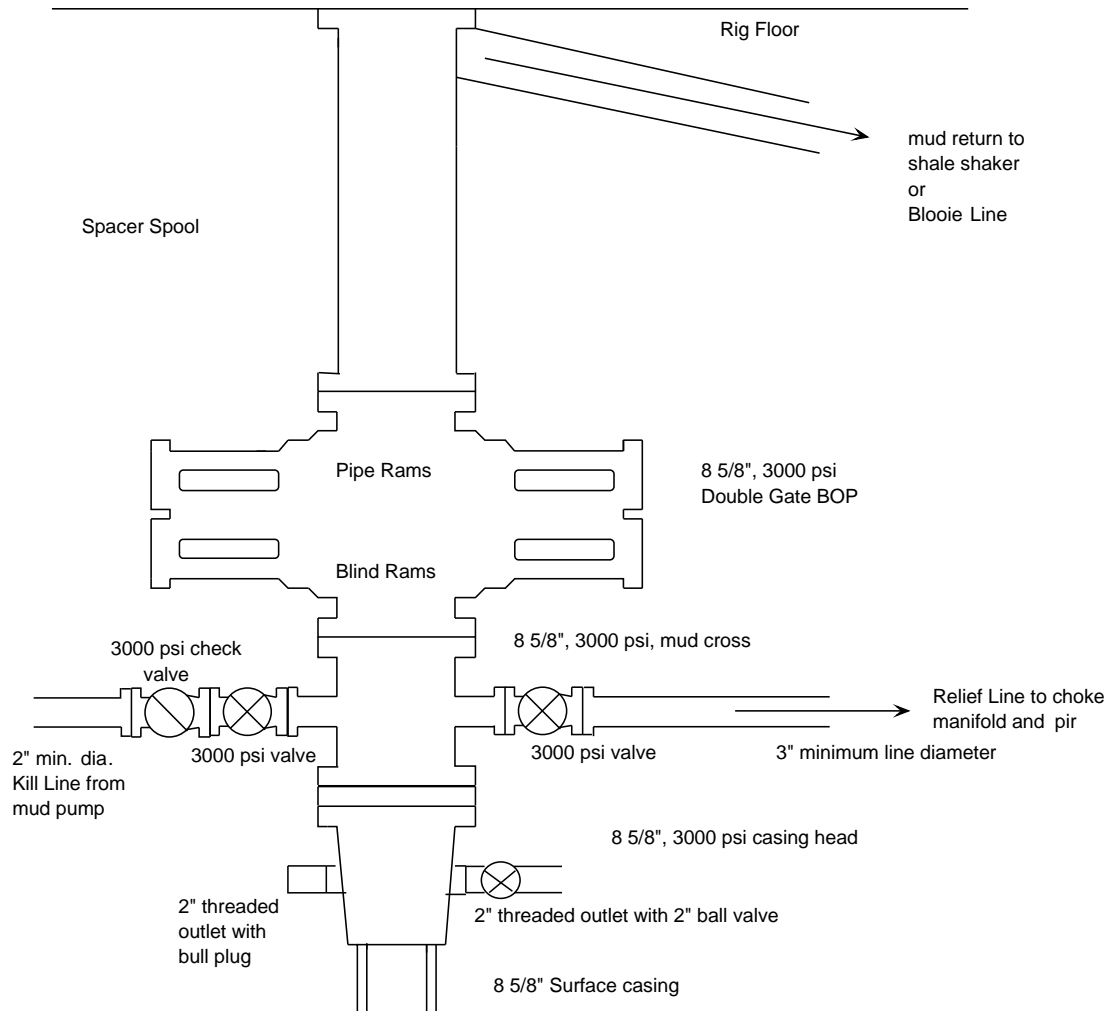


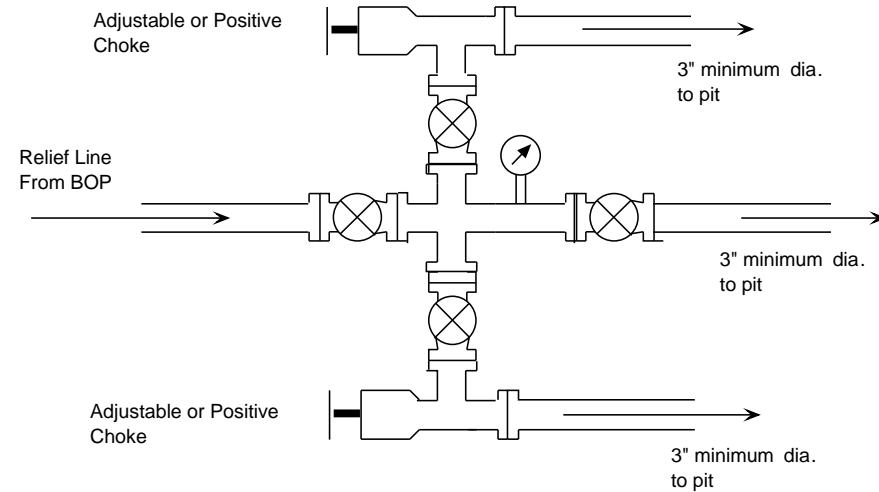
## STATELINE 22-2 3,000 psi Drilling Rig BOP System

**Figure 1** 8 5/8", 3000 psi Drilling Rig BOP System



BOP Installation from Surface Casing to TD . 8 5/8", 3000 psi double gate BOP equipped with blind and pipe rams and rotating head. All equipment rated at 3000 psi or greater working pressure.

**Figure 2**



Choke manifold for BOP system shown in Figure 3.  
All equipment to be rated at 3000 psi or greater.