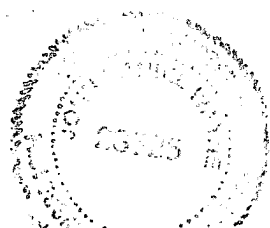
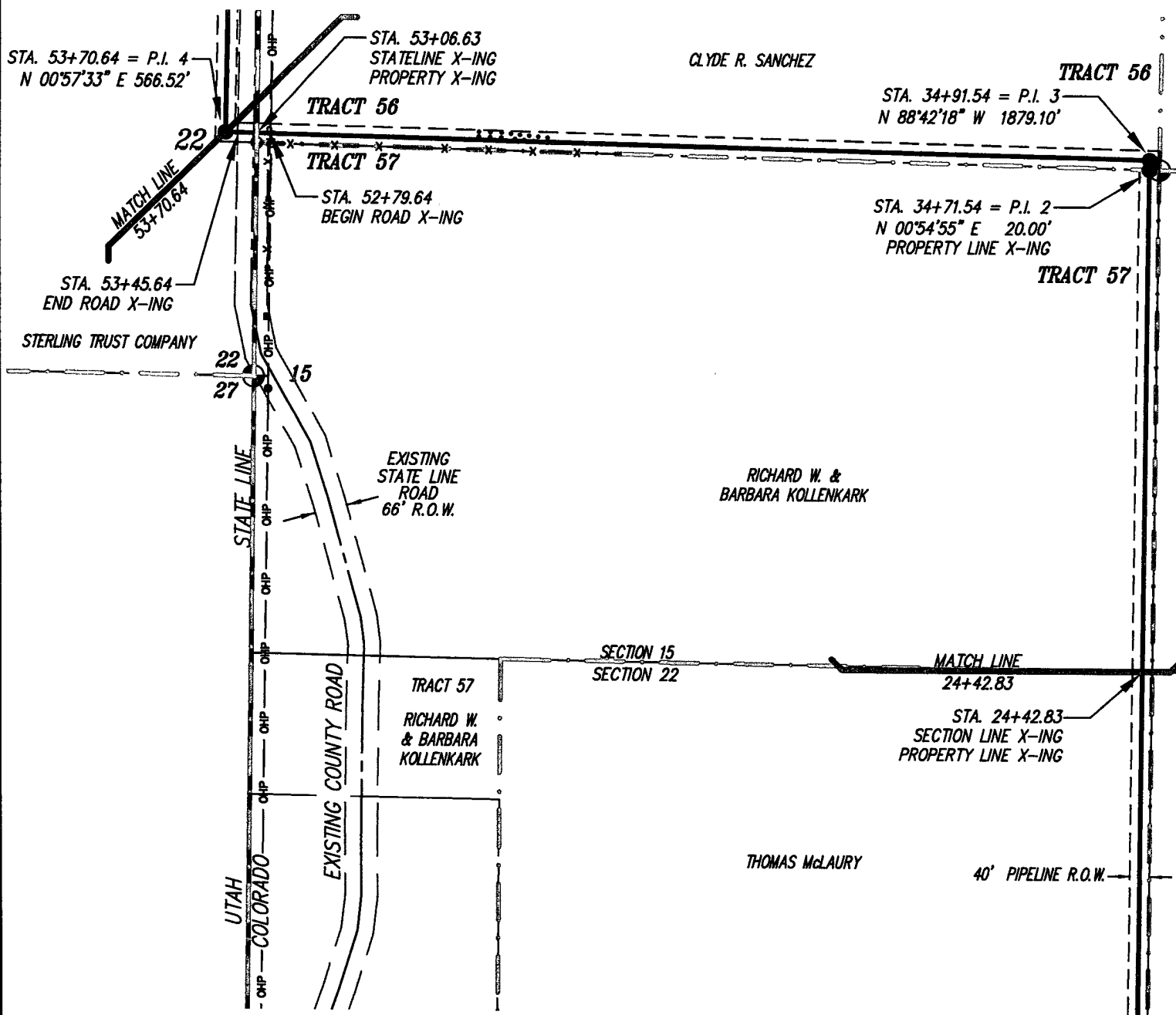


Some information on this plat is based on information taken from previous surveys, record information, or collateral evidence and may not reflect that which may be disclosed by a complete boundary survey. This plat is not to be relied on for establishment of surface boundaries, fences, buildings or other future improvements.

*John D. Wayne*  
John D. Wayne  
Professional Surveyor  
COLORADO Reg. No. 23525

REVISION	WIDTH	LENGTH			ACRES
11/07/2013	40'	FEET	RODS	MILES	
12/27/2013 RESTAKE	PG. 1	2442.83	148.05	0.46	2.24
	TOTALS	2442.83	148.05	0.46	2.24

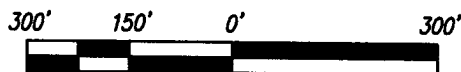
DJ SIMMONS INC.  
PROPOSED PIPELINE  
STATE LINE WELL 22-2  
TRACT 57 SEC 22,  
TRACT 56 SEC 15  
T-39-N, R-20-W, N.M.P.M.,  
DOLORES COUNTY, COLORADO  
AND  
SE/SE, NE/SE, SE/NE, NE/NE, NW/NE,  
NE/NW, & NW/NW  
SEC. 22 T-36-S, R-26-E, S.L.M.  
SAN JUAN COUNTY, UTAH



Some information on this plat is based on information taken from previous surveys, record information, or collateral evidence and may not reflect that which may be disclosed by a complete boundary survey. This plat is not to be relied on for establishment of surface boundaries, fences, buildings or other future improvements.

John D. Wayne  
Professional Surveyor  
COLORADO Reg. No. 23525

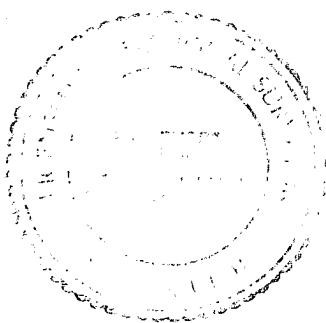
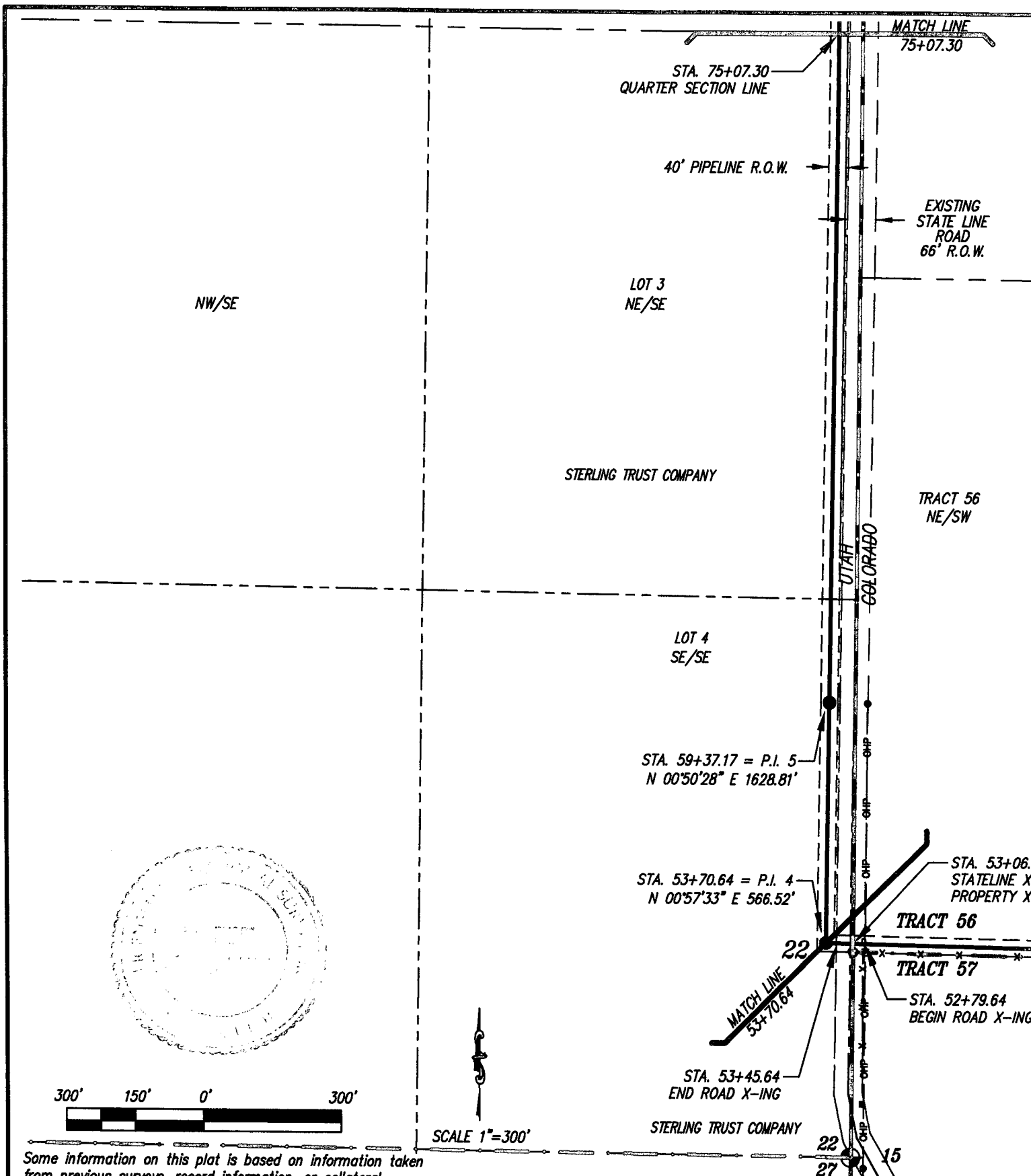
PG. 2 OF 6



SCALE 1"=300'

REVISION	WIDTH	LENGTH			ACRES
11/07/2013	40'	FEET	RODS	MILES	
12/27/2013 RESTAKE	PG. 1	2442.83	148.05	0.46	2.24
	PG. 2	2927.81	177.44	0.55	2.69
	TOTALS	5370.64	325.49	1.02	4.93

DJ SIMMONS INC  
PROPOSED PIPELINE  
STATE LINE WELL 22-2  
TRACT 57 SEC. 22,  
TRACT 56 SEC. 15  
T-39-N, R-20-W, N.M.P.M.,  
DOLORES COUNTY, COLORADO  
AND  
SE/SE, NE/SE, SE/NE, NE/NE, NW/NE,  
NE/NW, & NW/NW  
SEC. 22 T-36-S, R-26-E, S.L.M.  
SAN JUAN COUNTY, UTAH

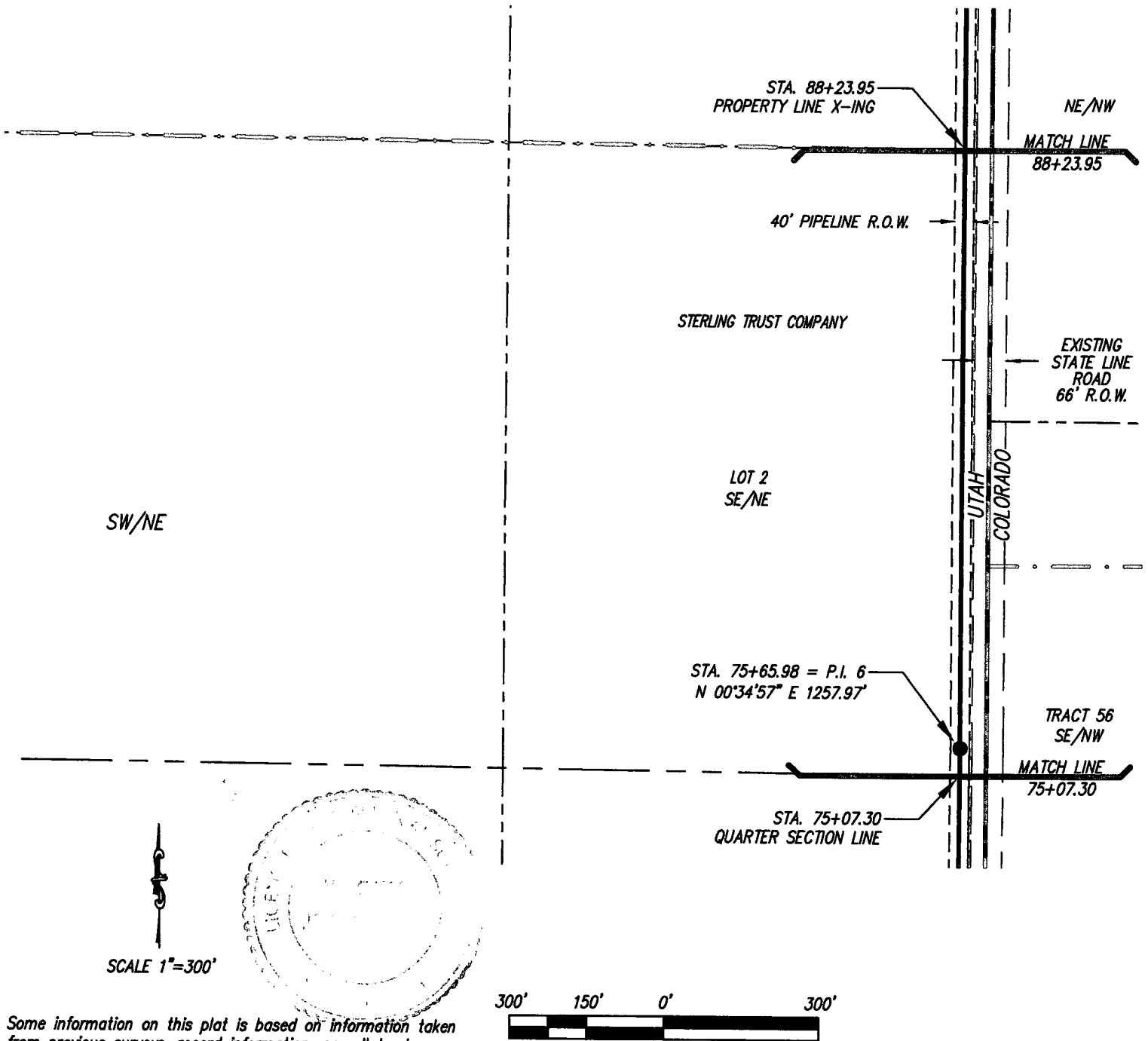


Some information on this plat is based on information taken from previous surveys, record information, or collateral evidence and may not reflect that which may be disclosed by a complete boundary survey. This plat is not to be relied on for establishment of surface boundaries, fences, buildings or other future improvements.

*John D. Wayne*  
 John D. Wayne  
 Professional Surveyor  
 UTAH Reg. No. 171252

REVISION:	WIDTH	LENGTH			ACRES
		FEET	RODS	MILES	
11/07/2013	40'				
12/27/2013 RESTAKE					
	PG. 1	2442.83	148.05	0.46	2.24
	PG. 2	2927.81	177.44	0.55	2.69
	PG. 3	2136.66	129.49	0.40	1.96
	TOTALS	7507.30	454.99	1.42	6.89

DJ SIMMONS INC.  
 PROPOSED PIPELINE  
 STATE LINE WELL 22-2  
 TRACT 57 SEC. 22,  
 TRACT 56 SEC. 15  
 T-39-N, R-20-W, N.M.P.M.,  
 DOLORES COUNTY, COLORADO  
 AND  
 SE/SE, NE/SE, SE/NE, NE/NE, NW/NE,  
 NE/NW, & NW/NW  
 SEC. 22 T-36-S, R-26-E, S.L.M.  
 SAN JUAN COUNTY, UTAH



Some information on this plat is based on information taken from previous surveys, record information, or collateral evidence and may not reflect that which may be disclosed by a complete boundary survey. This plat is not to be relied on for establishment of surface boundaries, fences, buildings or other future improvements.

John D. Wayne  
Professional Surveyor  
UTAH Rea. No. 171252

PG. 4 OF 6

REVISION:	WIDTH	LENGTH			ACRES
		FEET	RODS	MILES	
11/07/2013	40'				
12/27/2013 RESTAKE	PG. 1	2442.83	148.05	0.46	2.24
	PG. 2	2927.81	177.44	0.55	2.69
	PG. 3	2136.66	129.49	0.40	1.96
	PG. 4	1316.65	79.80	0.25	1.21
	TOTALS	8823.95	534.78	1.67	8.10

DJ SIMMONS INC.  
PROPOSED PIPELINE  
STATE LINE WELL 22-2  
TRACT 57 SEC. 22,  
TRACT 56 SEC. 15  
T-39-N, R-20-W, N.M.P.M.,  
DOLORES COUNTY, COLORADO  
AND  
SE/SE, NE/SE, SE/NE, NE/NE, NW/NE,  
NE/NW, & NW/NW  
SEC. 22 T-36-S, R-26-E, S.L.M.  
SAN JUAN COUNTY, UTAH

MATCH LINE  
123+45.52

STA. 123+45.52  
PROPERTY X-ING

40' PIPELINE R.O.W.

NW/NE

CLYDE R. SANCHEZ

LOT 1  
NE/NE

STA. 100+76.06 = P.I. 7  
N 89°10'06" W 2269.46'

STA. 88+23.95  
PROPERTY LINE X-ING

40' PIPELINE R.O.W.

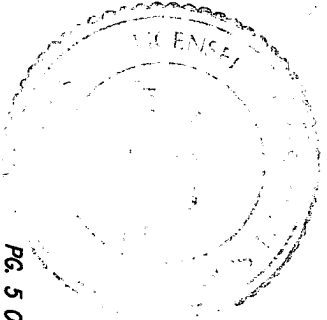
NE/NW

MATCH LINE  
88+23.95

EXISTING  
STATE LINE  
ROAD  
66' R.O.W.

Some information on this plot is based on information taken from previous surveys, record information, or collateral evidence and may not reflect that which may be disclosed by a complete boundary survey. This plot is not to be relied on for establishment of surface boundaries, fences, buildings or other future improvements.

John D. Wayne  
Professional Surveyor  
UTAH Reg. No. 171252



Pg. 5 of 6



SCALE 1"=300'

REVISION	WIDTH	FEET	RODS	MILES	ACRES	DI DIMENSIONS INC.
11/07/2013	40'					PROPOSED PIPELINE
12/27/2013 RESTAKE						STATE LINE WELL 22.2
	Pg. 1	2442.83	148.05	0.46	2.24	TRACT 57 SEC. 22
	Pg. 2	2827.81	177.44	0.55	2.69	TRACT 56 SEC. 15
	Pg. 3	2136.66	128.49	0.40	1.96	T-39-N, R-20-W, N-M-P-M,
	Pg. 4	1316.65	78.80	0.25	1.21	DOLORS COUNTY, COLORADO
	Pg. 5	3521.57	213.43	0.67	3.23	AND
	TOTALS	12345.52	748.21	2.34	11.34	SE/SE, NE/SE, SE/NE, NW/NE,
						NE/NW, & NW/NW
						SEC. 21 T-36-S, R-24-E, S-1-M
						SAN JUAN COUNTY, UTAH

DRAWN BY: BB CAD DWG NO: STATELINE22-2\PIPELINE1.DWG SCALE: 1"=300' DATE: 12/27/2013

EXISTING  
UTAH COUNTY ROAD S  
66' R.O.W.

MATCH LINE  
123+45.52

ANITA WALKER, THOMAS  
RHODES, & DIANNE  
BULLOCK

STA. 142+54.39 = E.O.L.  
@ PROPERTY LINE  
END SURVEY

STA. 138+56.47 = P.I. 9  
N 89°06'26" W 397.91'

40' PIPELINE R.O.W.

STA. 123+95.85 = P.I. 8  
N 89°06'50" W 1460.62'

STA. 123+45.52  
PROPERTY X-ING

ANITA WALKER,  
THOMAS RHODES,  
& DIANNE BULLOCK

JIMMY D. & SHARILYN A. RICHARDSON

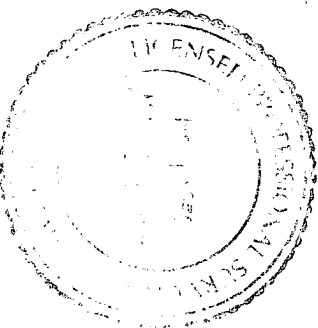
NW/NW

NE/NW

NW/NE

Some information on this plot is based on information taken from previous surveys, record information, or collateral evidence and may not reflect that which may be disclosed by a complete boundary survey. This plot is not to be relied on for establishment of surface boundaries, fences, buildings or other future improvements.

John D. Wayne  
Professional Surveyor  
UTAH Reg. No. 11252



SCALE 1"=300'

REVISION:		WIDTH	LENGTH		ACRES
DATE	BY	FEET	RODS	MILES	
11/07/2013		40'			
12/27/2013	BB	PG. 1	2442.83	148.05	0.46
		PG. 2	2927.81	177.44	0.55
		PG. 3	2136.66	129.49	0.40
		PG. 4	1316.65	79.80	0.25
		PG. 5	3521.57	213.43	0.67
		PG. 6	1908.67	115.89	0.36
		TOTALS	14254.39	863.90	2.70
DRAWN BY: BB		CAD DWG NO.	STATELINE22-2\PIPELINE1.DWG	SCALE	1" = 300'
		DATE: 12/27/2013			

DD SIMMONS INC.  
PROPOSED PIPELINE  
STATE LINE WELL 22-2  
TRACT 57 SEC. 12,  
TRACT 56 SEC. 15,  
T-39-N, R-20-W, N.M.P.M.,  
DOLORS COUNTY, COLORADO  
AND  
SE/SE, NE/SE, SE/NE, NW/NE,  
NE/NW, & NW/NW  
SEC. 22 T-36-S, R-26-E, S1-M,  
SAN JUAN COUNTY, UTAH

DI SIMMONS INC.  
PROPOSED PIPELINE  
STATE LINE WELL 22-2  
TRACT 57 SEC. 22  
TRACT 56 SEC. 15  
T-39A, R-20 W, N-16 P-4  
DOLORES COUNTY, COLORADO  
AND  
S-15 E, N-15 E, S-15 E, N-15 E, N-15 E  
NE/NE, & NW/NW  
SEC. 22 T-36 S, R-26 E, S-15 E  
SAN JUAN COUNTY, UTAH