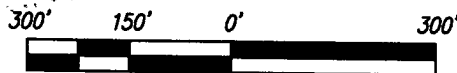


Some information on this plat is based on information taken from previous surveys, record information, or collateral evidence and may not reflect that which may be disclosed by a complete boundary survey. This plat is not to be relied on for establishment of surface boundaries, fences, buildings or other future improvements.

John D. Wayne
John D. Wayne
Professional Surveyor
COLORADO Reg. No. 23525

PG. 1 OF 2

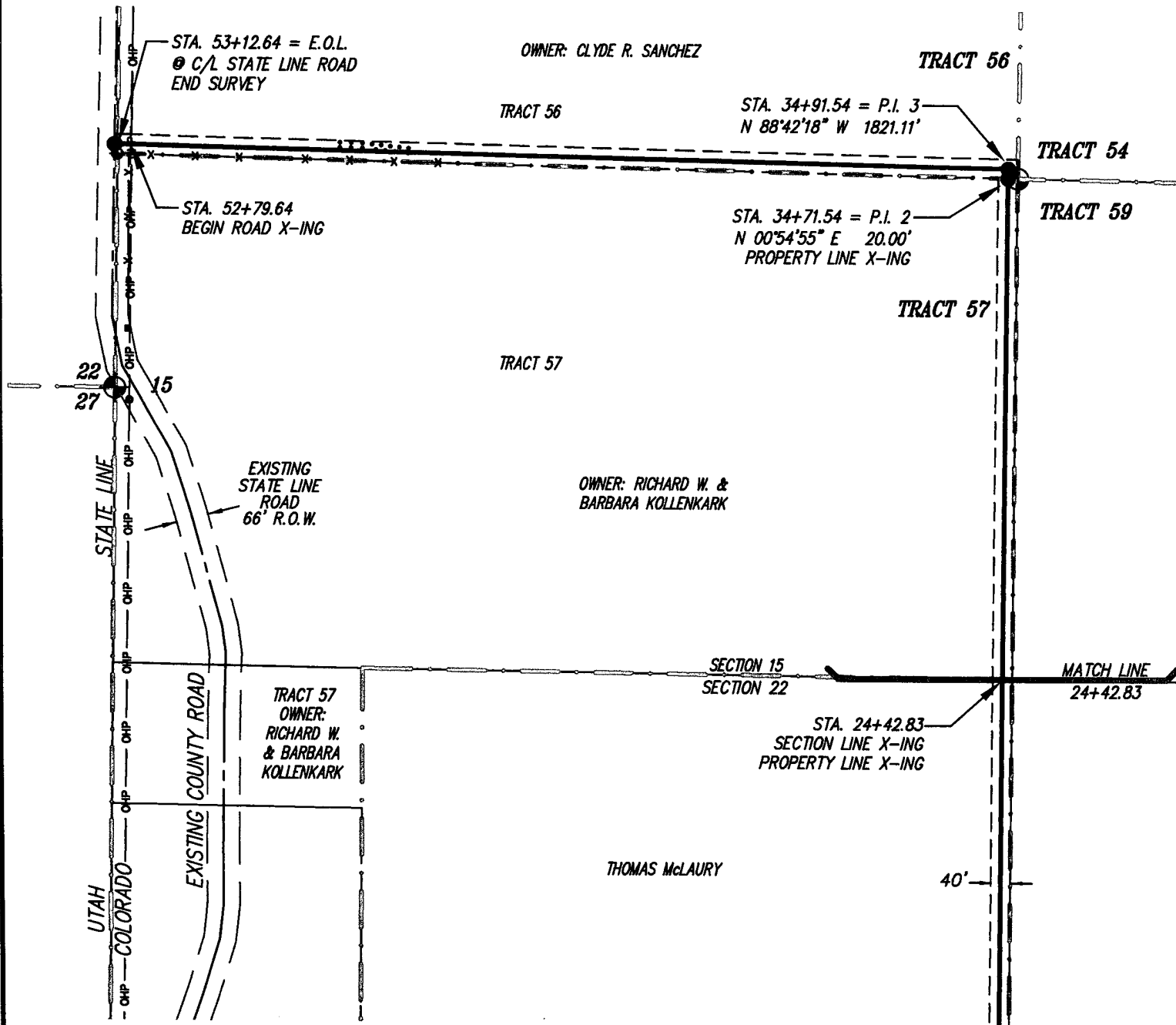


SCALE 1"=300'

REVISION:	WIDTH		LENGTH		ACRES
11/07/2013	40'	FEET	RODS	MILES	
12/27/2013 RESTAKE	PG. 1	2442.83	148.05	0.46	2.24
	TOTALS	2442.83	148.05	0.46	2.24

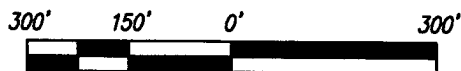
DJ SIMMONS INC.
PROPOSED ACCESS
STATE LINE WELL 22-2
TRACT 57 SEC. 22,
TRACT 56 SEC. 15
T-39-N, R-20-W, N.M.P.M.,
DOLORES COUNTY, COLORADO

DRAWN BY: BB CAD DWG NO: STATELINE22-2\ACCESS.DWG SCALE: 1"=300' DATE: 12/27/13



Some information on this plat is based on information taken from previous surveys, record information, or collateral evidence and may not reflect that which may be disclosed by a complete boundary survey. This plat is not to be relied on for establishment of surface boundaries, fences, buildings or other future improvements.

John D. Wayne
 John D. Wayne
 Professional Surveyor
 COLORADO Reg. No. 23525



SCALE 1"=300'

REVISION:	WIDTH	LENGTH	ACRES	DI SIMMONS INC. PROPOSED ACCESS STATE LINE WELL 22-2 TRACT 57 SEC 22, TRACT 56 SEC 15 T-39-N, R-20-W, N.M.P.M., DOLORES COUNTY, COLORADO
11/07/2013	40'	FEET	RODS	
12/27/2013 RESTAKE	PG. 1	2442.83	148.05	
	PG. 2	2869.81	173.93	
	TOTALS	5312.64	321.98	
			1.01	4.88