



Digital Drilling Data  
Systems, LLC

**TVD Build**  
(Scale: 5":100' (10'))

Company: Cathedral Energy Services

State: CO

Well: Mathews 4A-14H

County: Weld

Field: Dj Basin

Country: USA

Well ID: 051233697500

Job Number: 135235

Location: Weld County

Elev KB: 5131

Operator 1: Encana Oil & Gas

Elev DF:

Operator 2:

Elev GL: 5118

Comment 1:

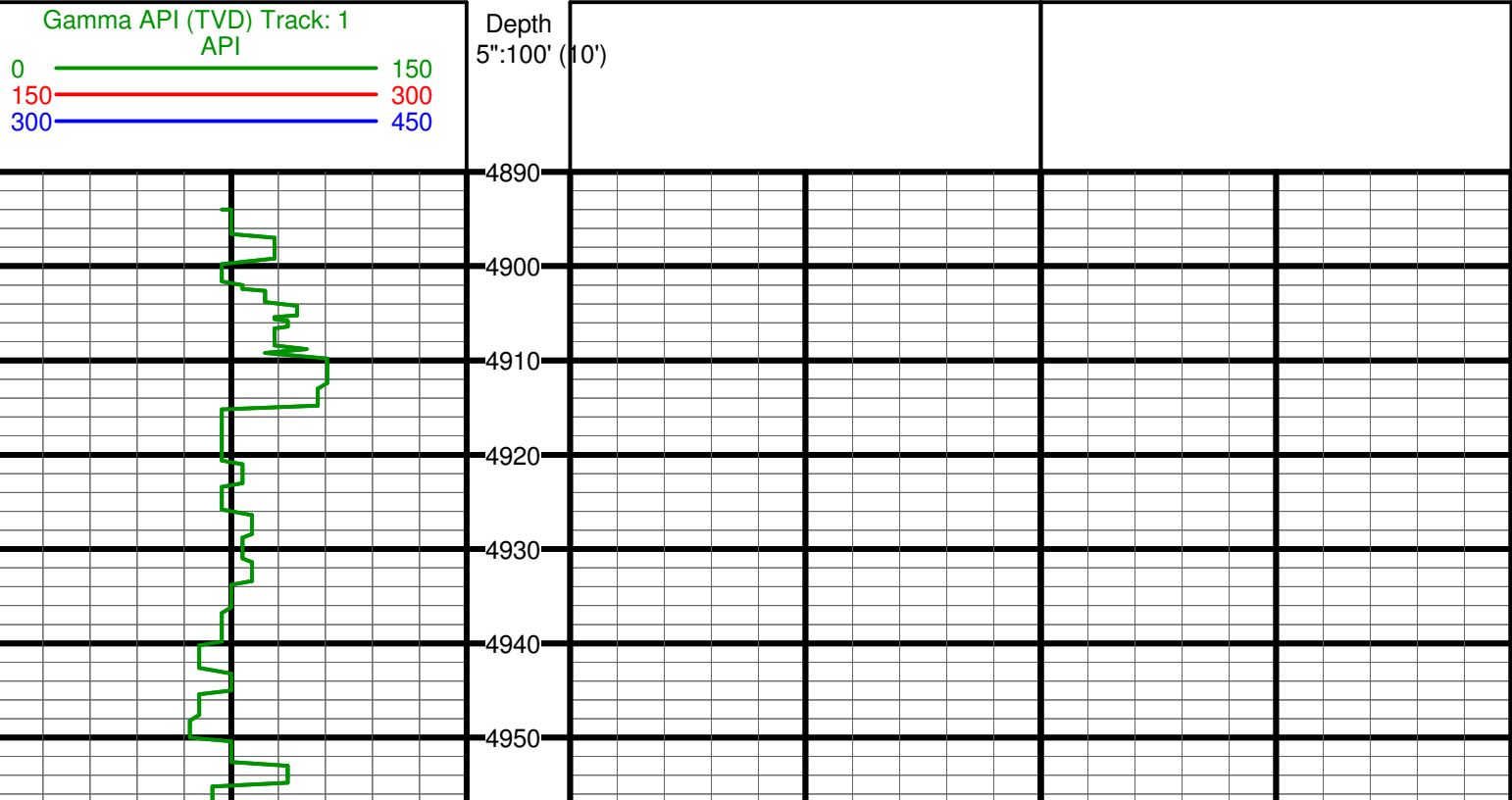
Comment 2:

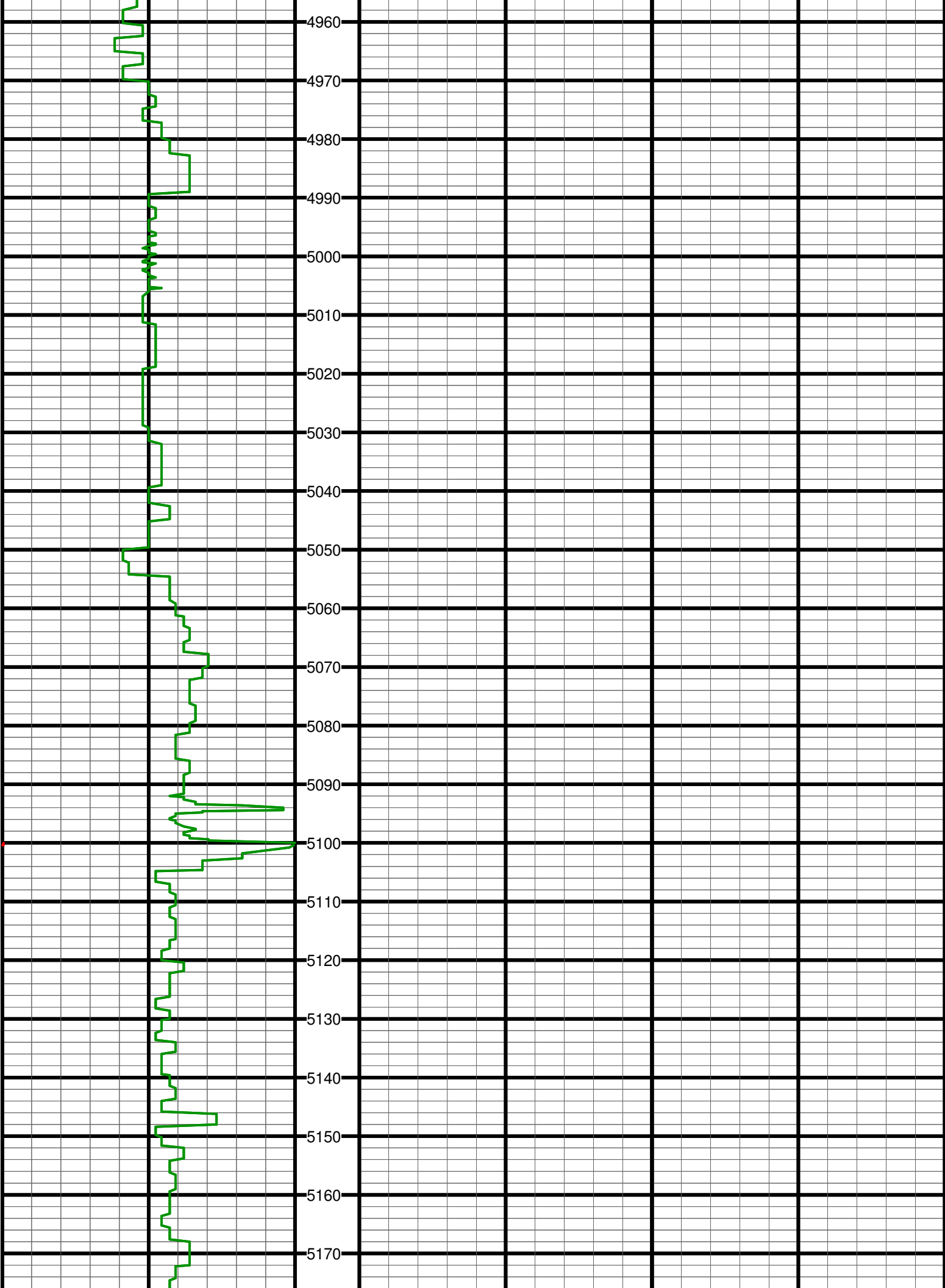
Comment 3:

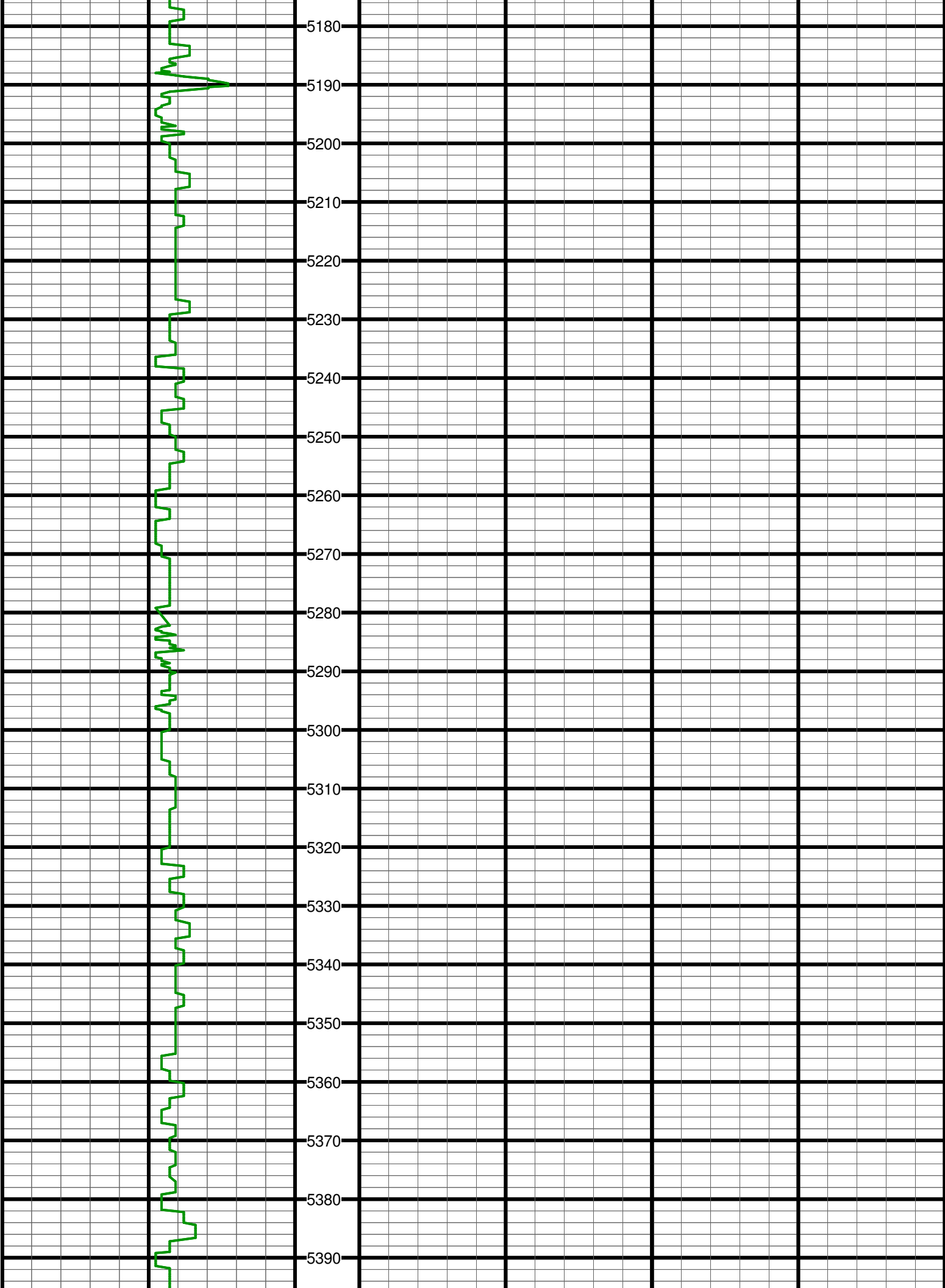
Comment 4:

Comment 5:

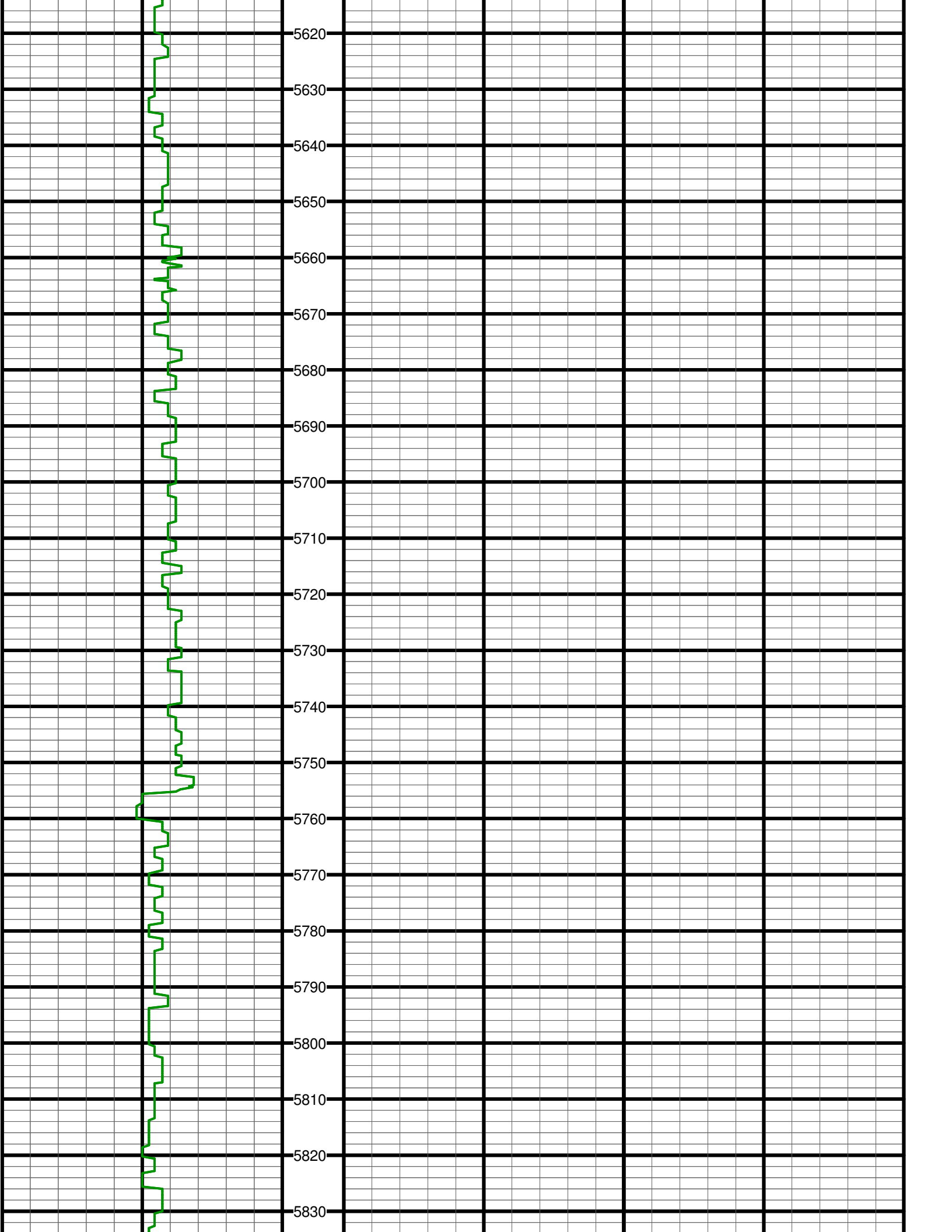
| Hole Data     |         |        | Casing Record |        |        |
|---------------|---------|--------|---------------|--------|--------|
| Size          | From    | To     | Size          | From   | To     |
| 12.25         | 0       | 1323   | 9.625         | 0      | 1323   |
| 8.75          | 1326    | 7748   |               |        |        |
|               |         |        |               |        |        |
|               |         |        |               |        |        |
|               |         |        |               |        |        |
|               |         |        |               |        |        |
|               |         |        |               |        |        |
| Tool Run Data |         |        |               |        |        |
| Tool S/N      | Run #1  | Run #2 | Run #3        | Run #4 | Run #5 |
| 1070          |         |        |               |        |        |
| Cal Factor    | 3.43    |        |               |        |        |
| Gamma Offset  | 40.97   |        |               |        |        |
| Start Depth   | 5000    |        |               |        |        |
| Start Date    | 5/29/13 |        |               |        |        |
| Start Time    | 22:00   |        |               |        |        |
| End Depth     | 7748    |        |               |        |        |
| End Date      | 6/1/13  |        |               |        |        |
| End Time      | 18:30   |        |               |        |        |

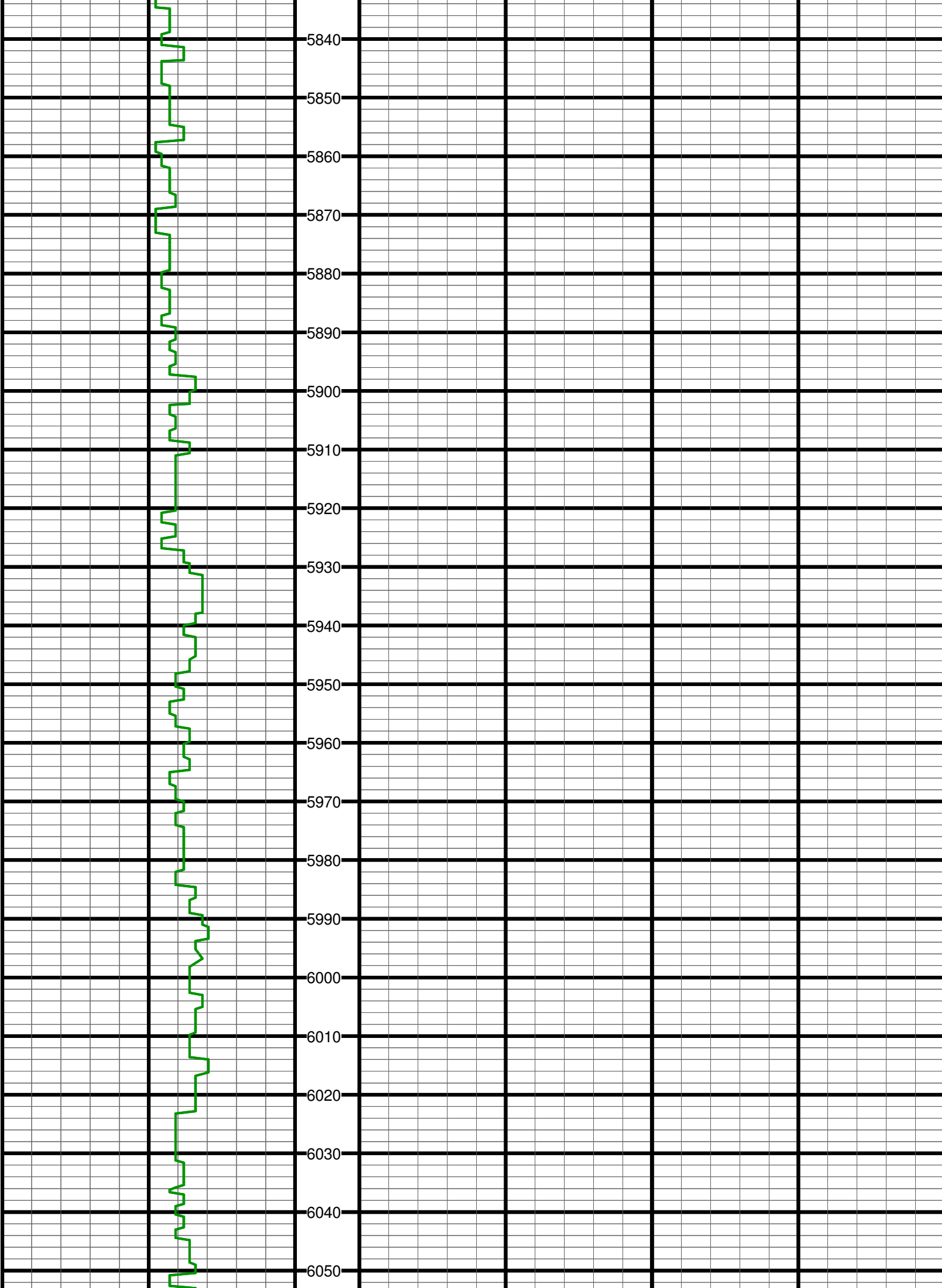


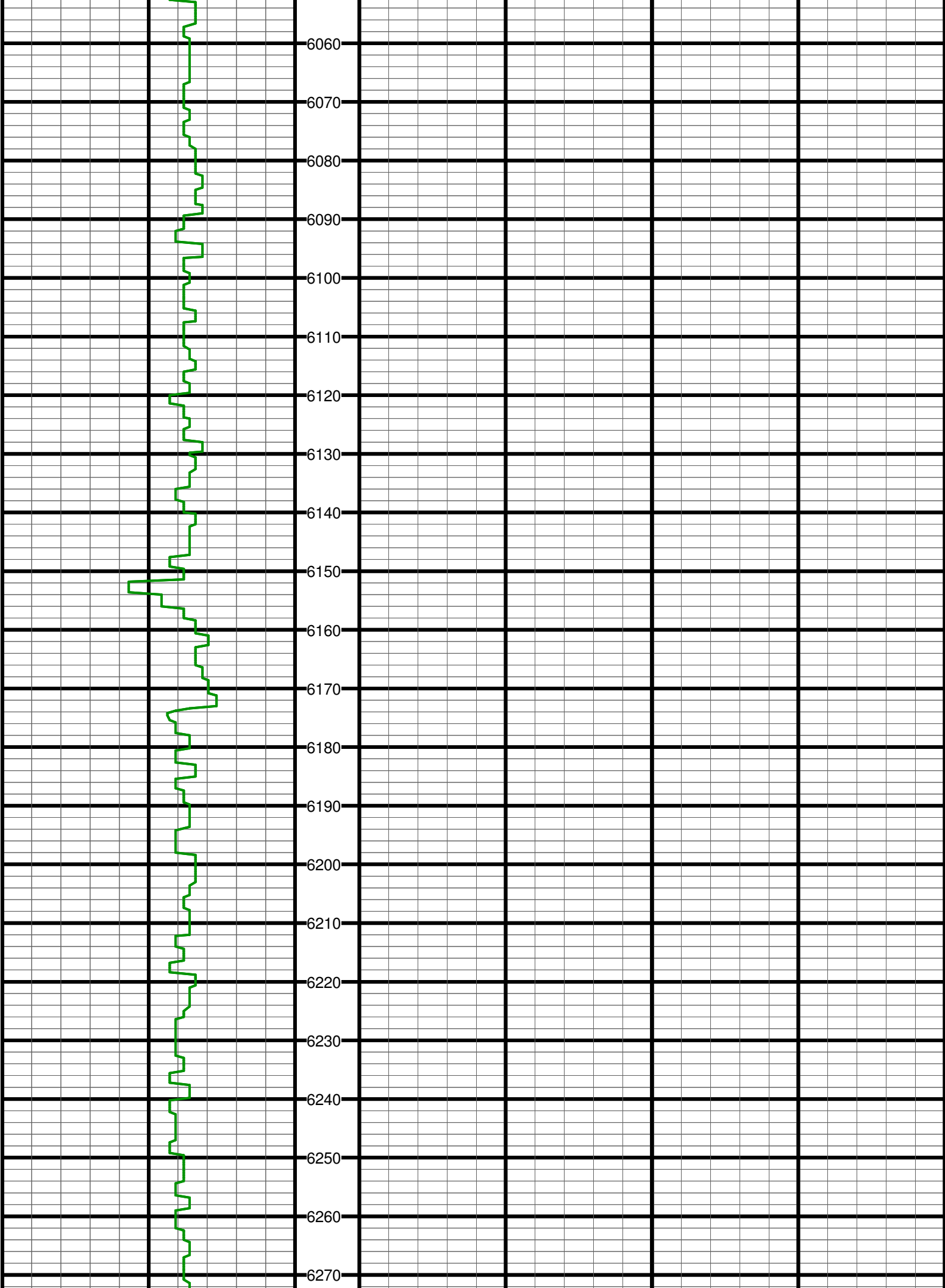


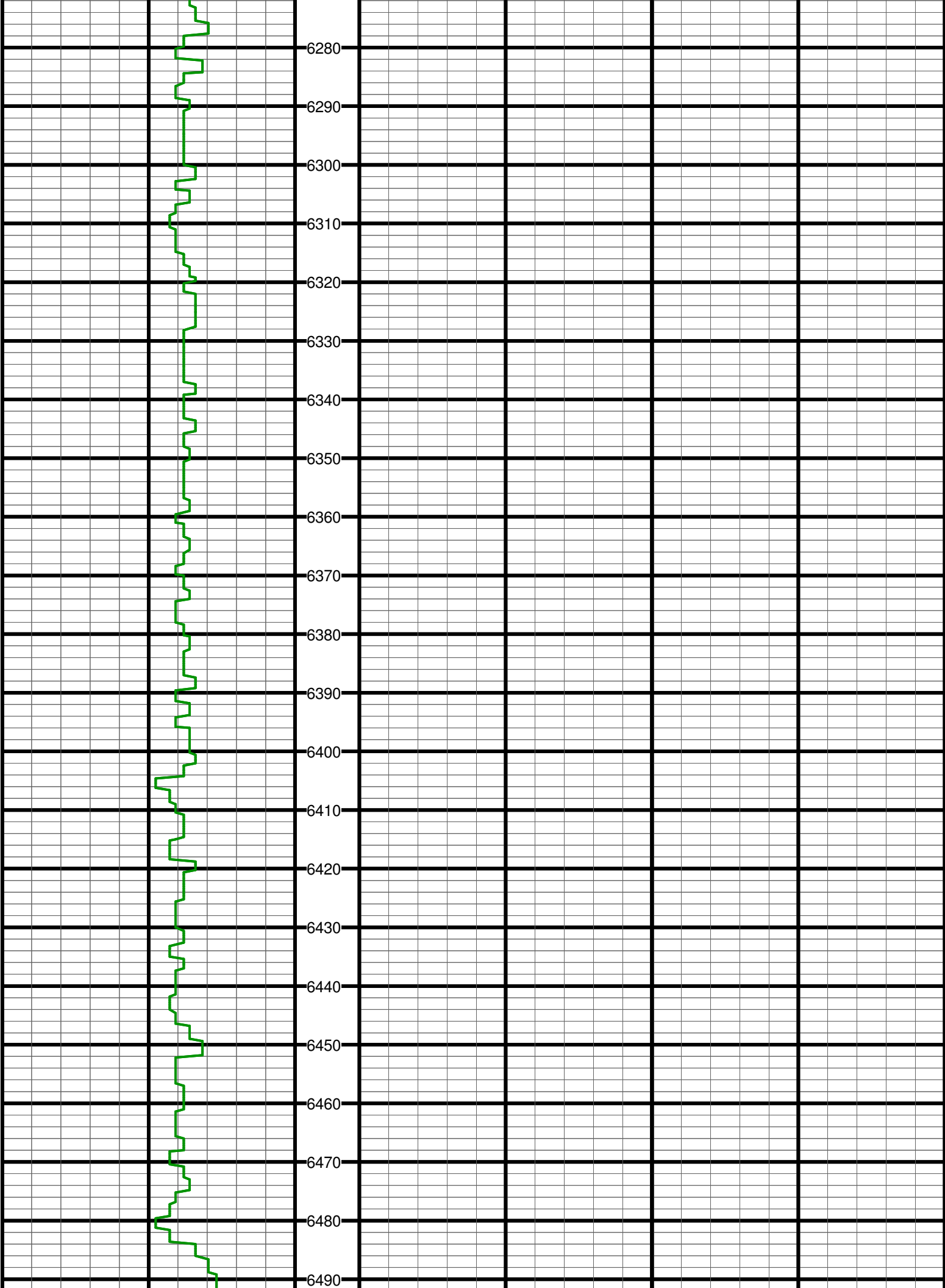




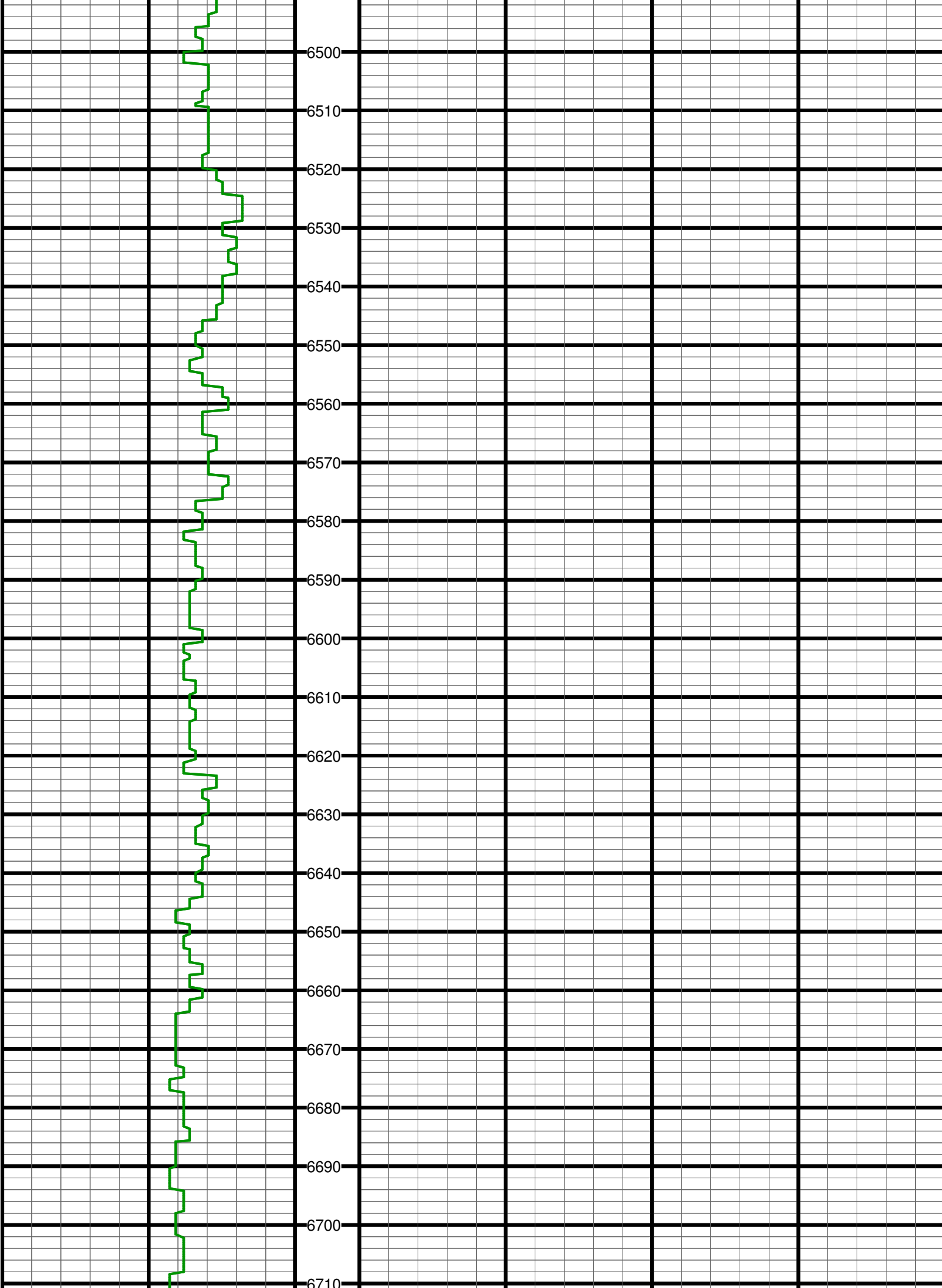


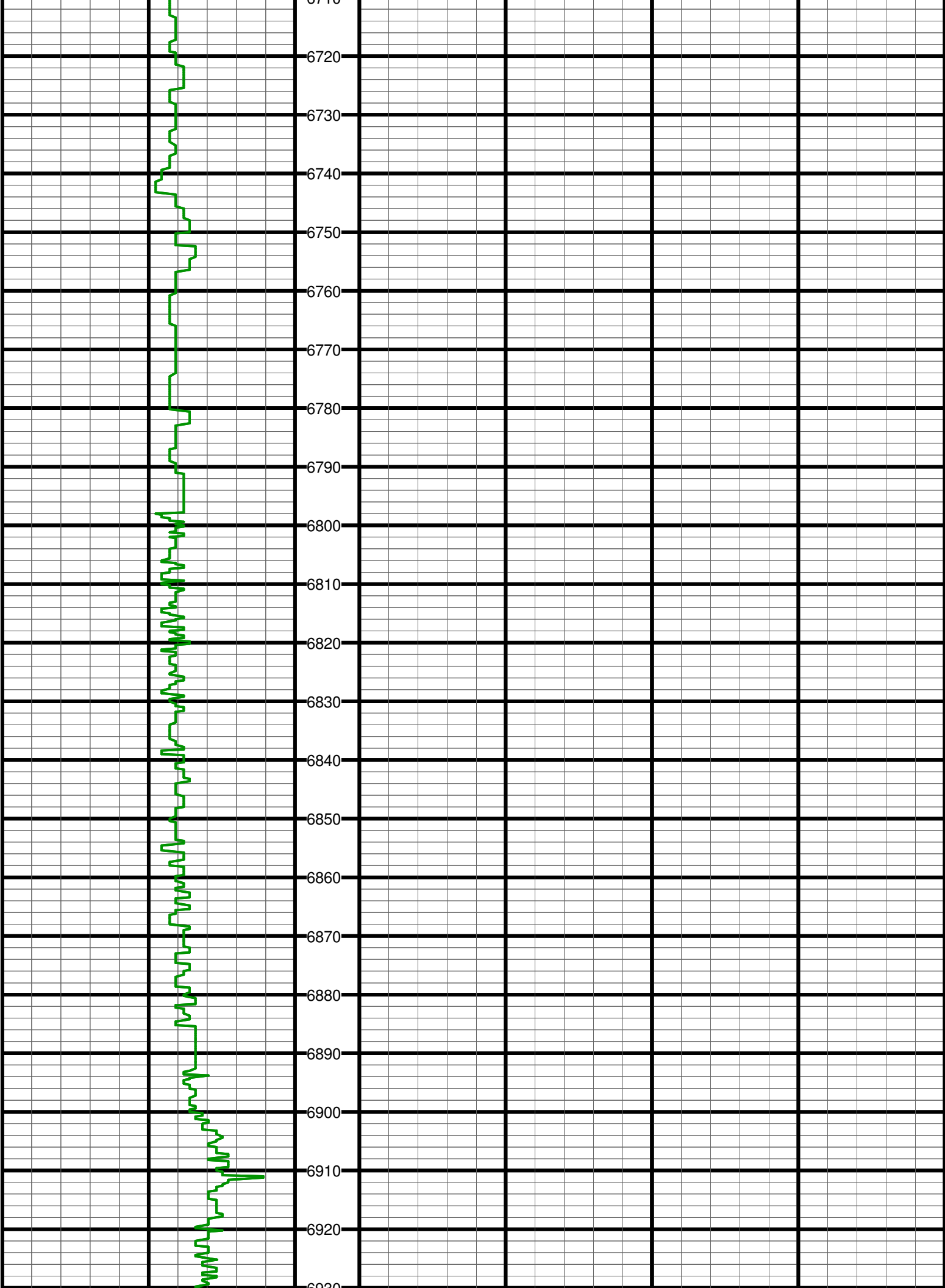


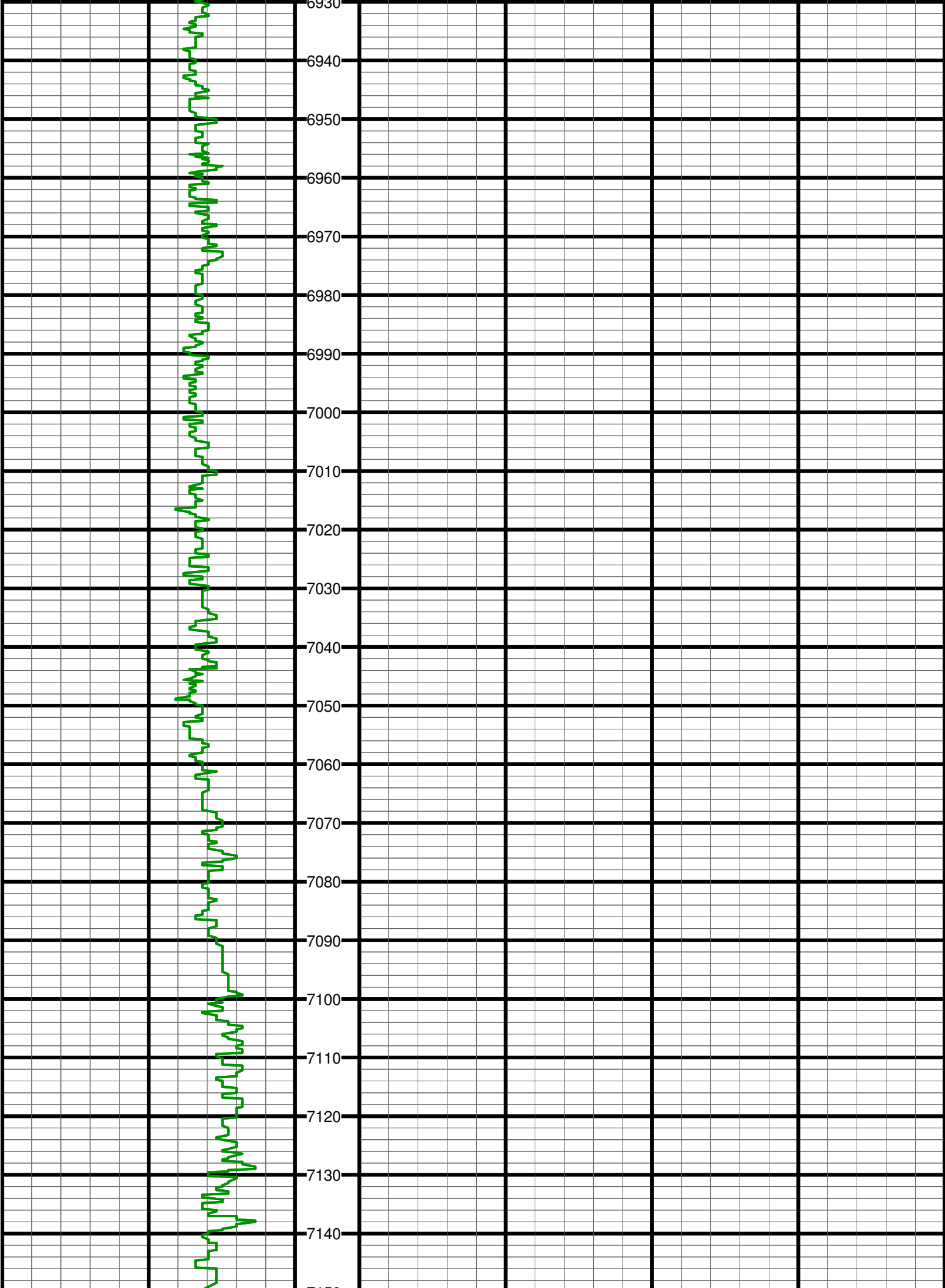


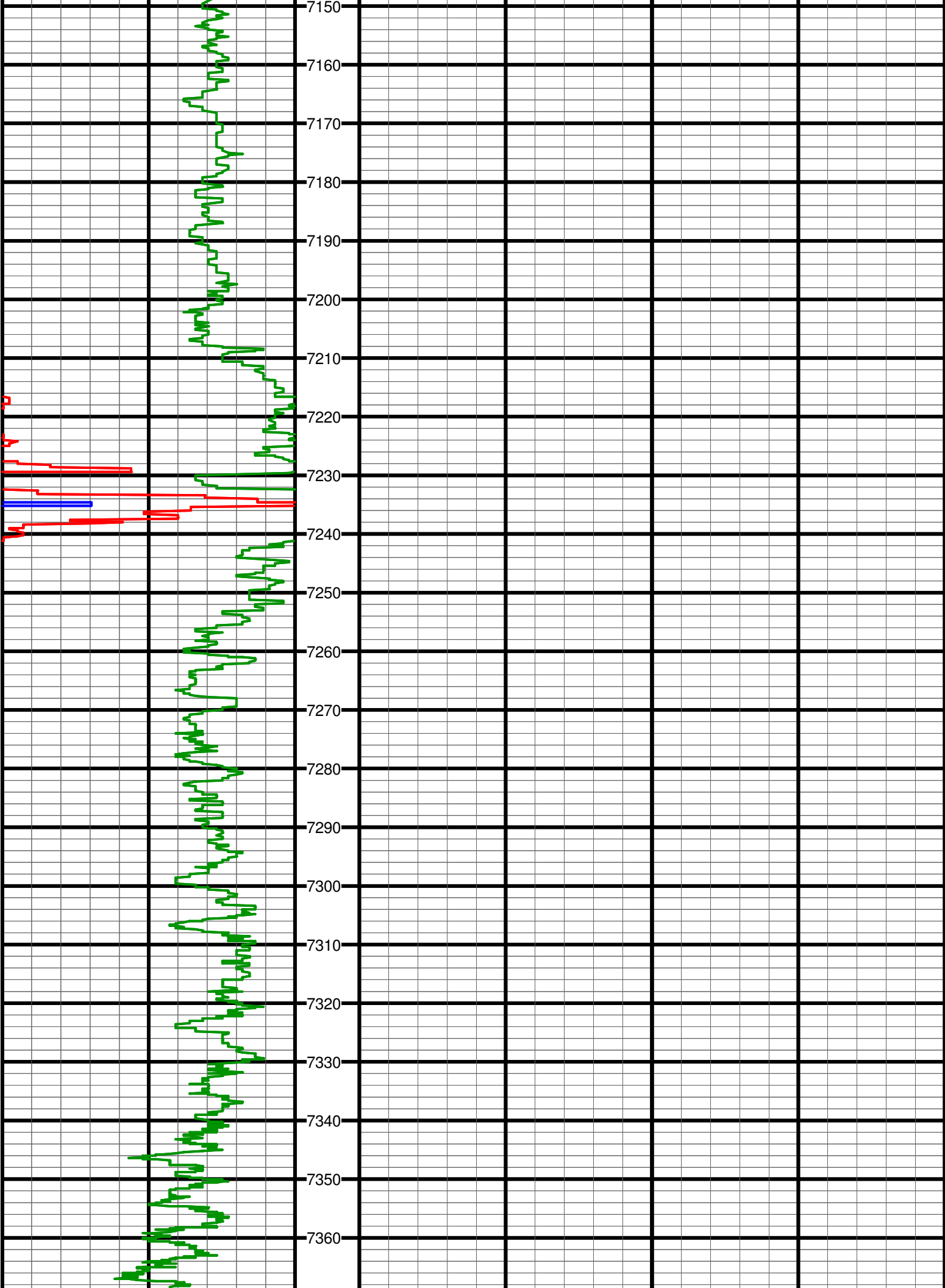












[illegible]

