



Digital Drilling Data
Systems, LLC

MD Lateral

(Scale: 5":100' (10"))

Company: Cathedral Energy Services

State: CO

Well: Mathews 4A-14H

County: Weld

Field: Dj Basin

Country: USA

Well ID: 051233697500

Job Number: 135235

Location: Weld County

Elev KB: 5131

Operator 1: Encana Oil & Gas

Elev DF:

Operator 2:

Elev GL: 5118

Comment 1:

Comment 2:

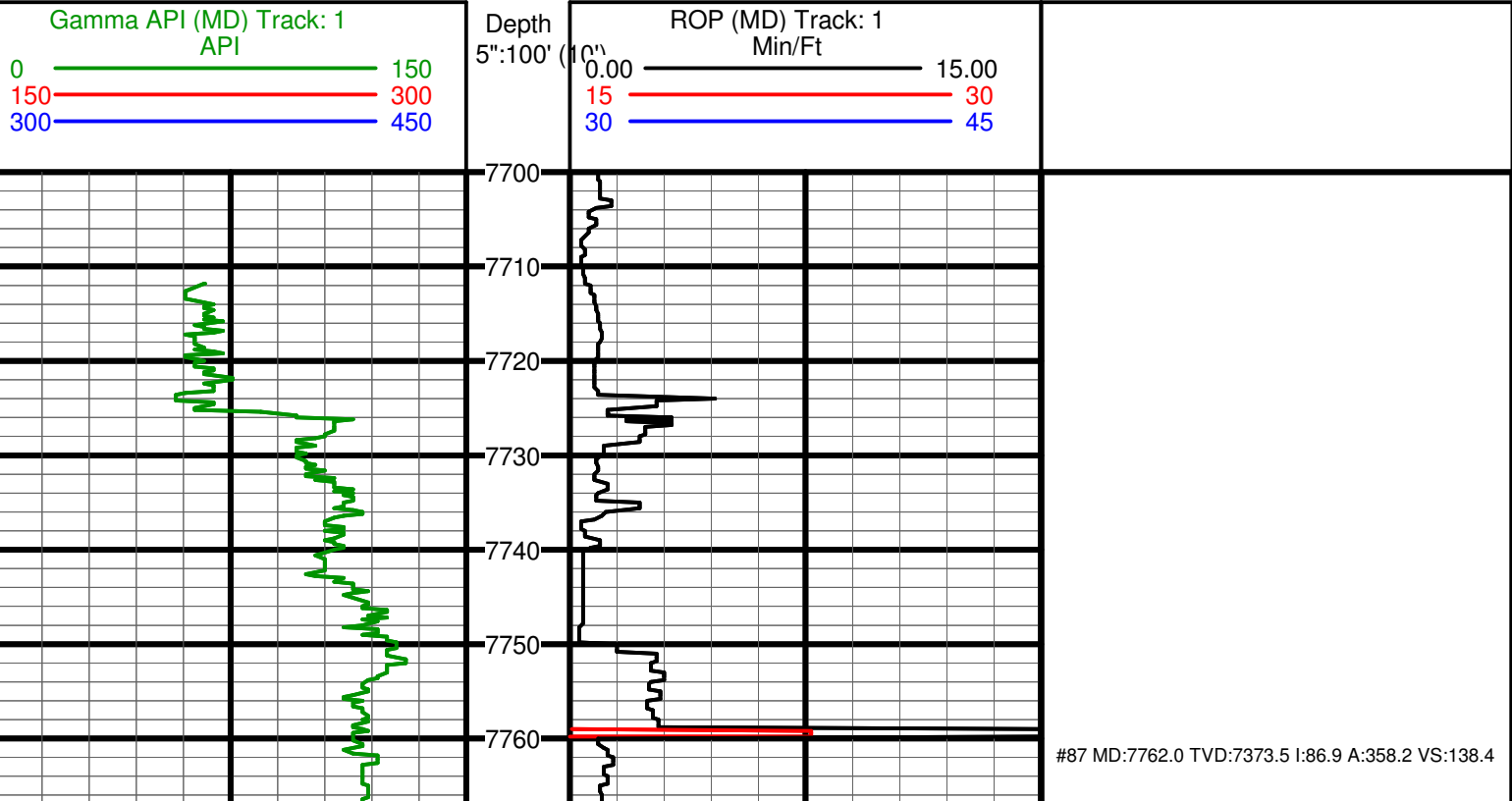
Comment 3:

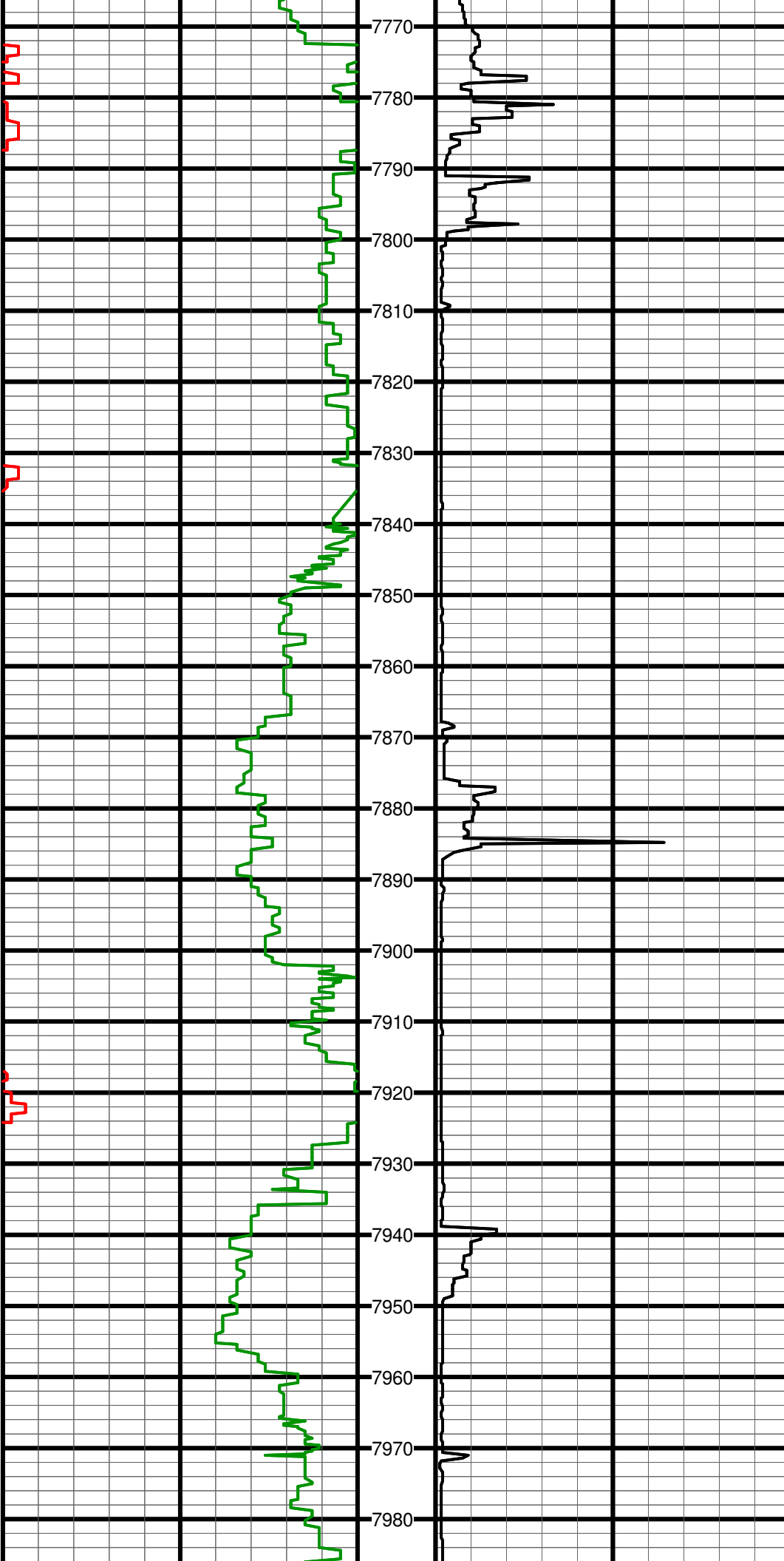
Comment 4:

Comment 5:

Hole Data			Casing Record		
Size	From	To	Size	From	To
12.25	0	1323	9.625	0	1323
8.75	1326	7748	7	1323	7728
6.125	7748	11970			

Tool Run Data		Run #1	Run #2	Run #3	Run #4	Run #5
Tool S/N	1070	1289	1289			
Cal Factor	3.43	2.91	2.91			
Gamma Offset	40.97	36.29	36.29			
Start Depth	5000	7785	7785			
Start Date	5/29/13	6/3/13	6/4/13			
Start Time	22:00	23:00	19:30			
End Depth	7748	7785	11970			
End Date	6/1/13	6/3/13	6/6/13			
End Time	18:30	18:30	4:00			

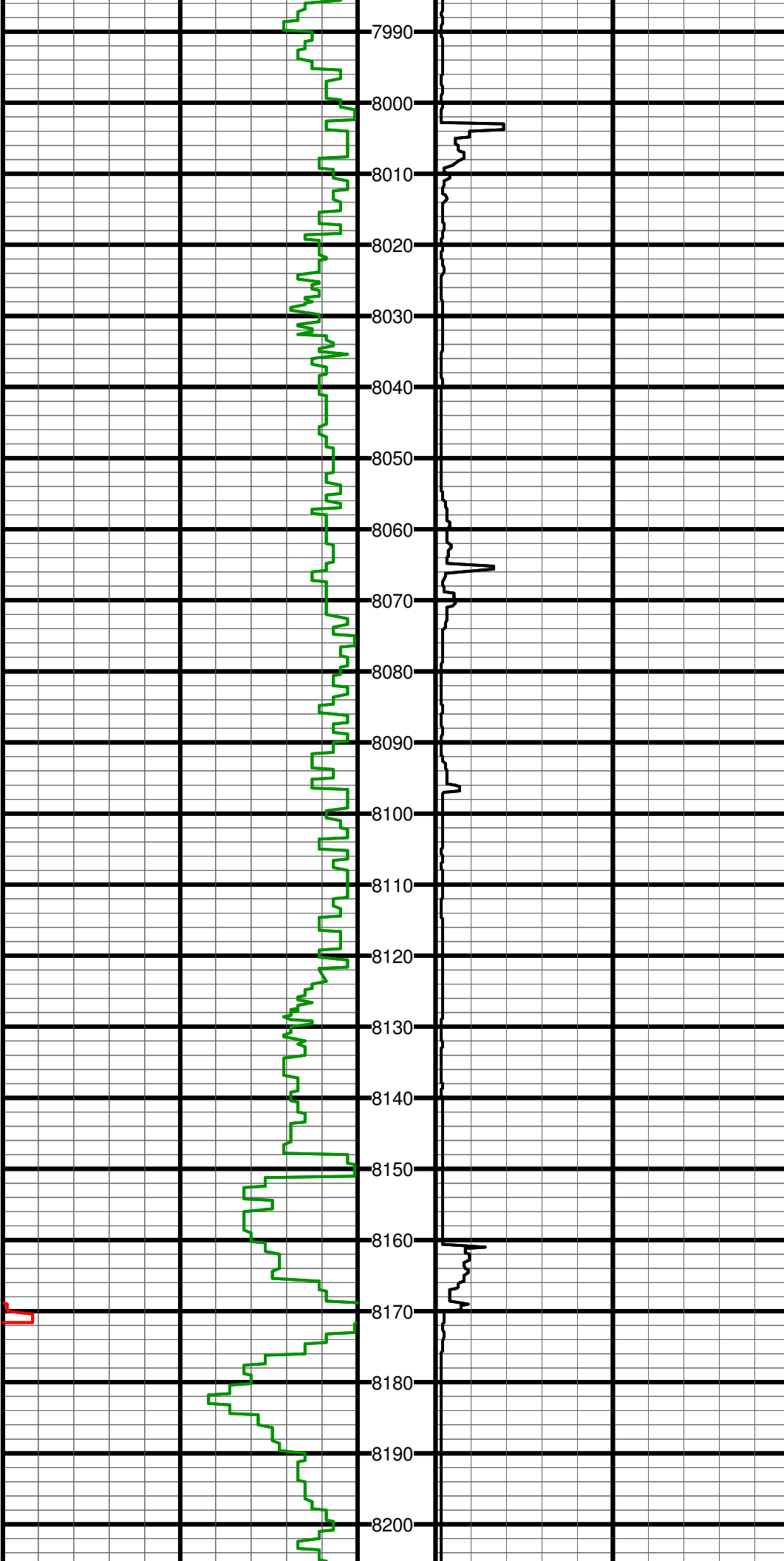




#88 MD:7825.0 TVD:7376.3 I:88.0 A:358.5 VS:201.3

#89 MD:7888.0 TVD:7379.0 I:87.2 A:359.8 VS:264.3

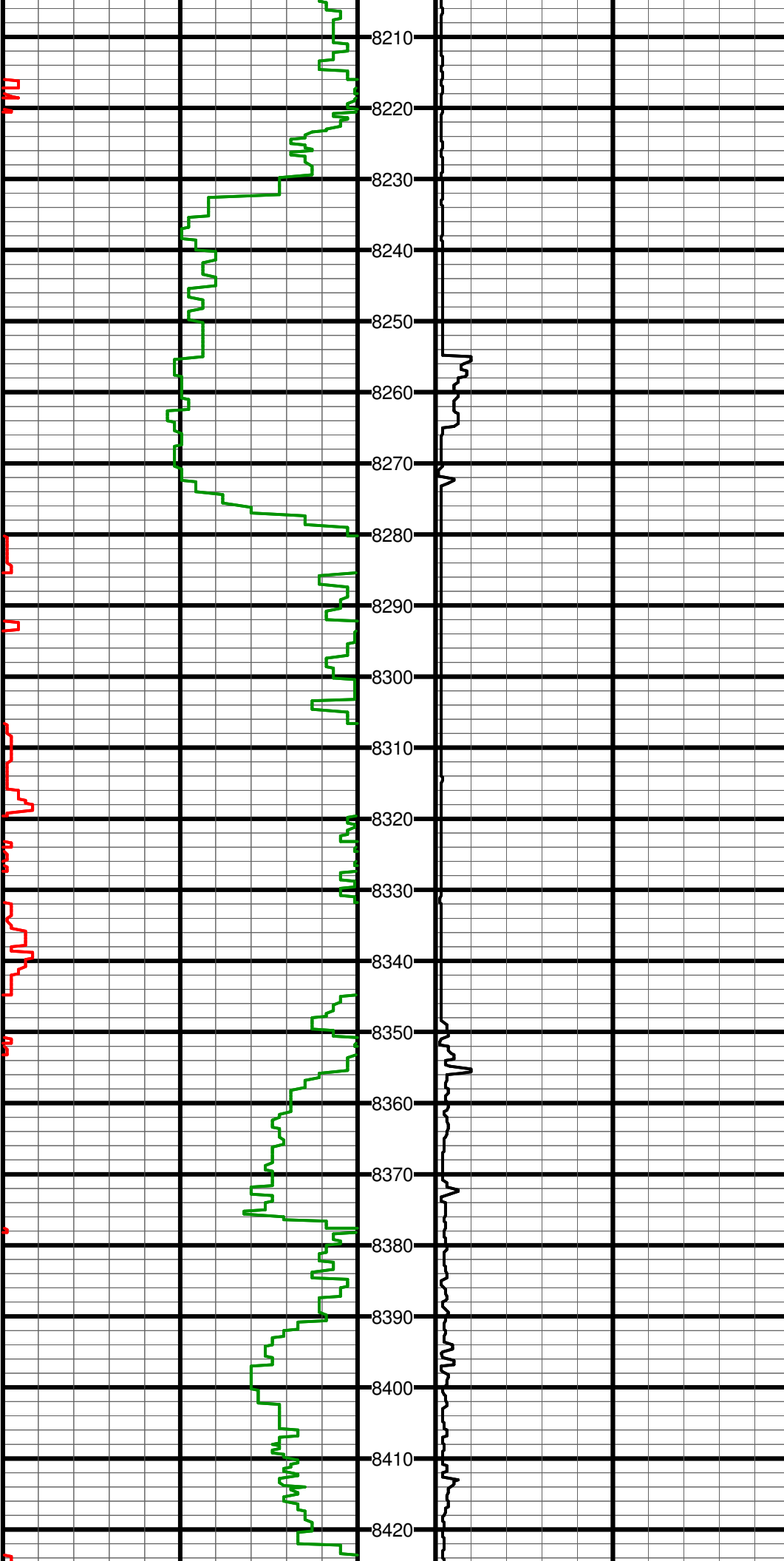
#90 MD:7952.0 TVD:7381.8 I:87.8 A:0.4 VS:328.2



#91 MD:8015.0 TVD:7383.9 I:88.4 A:0.7 VS:391.2

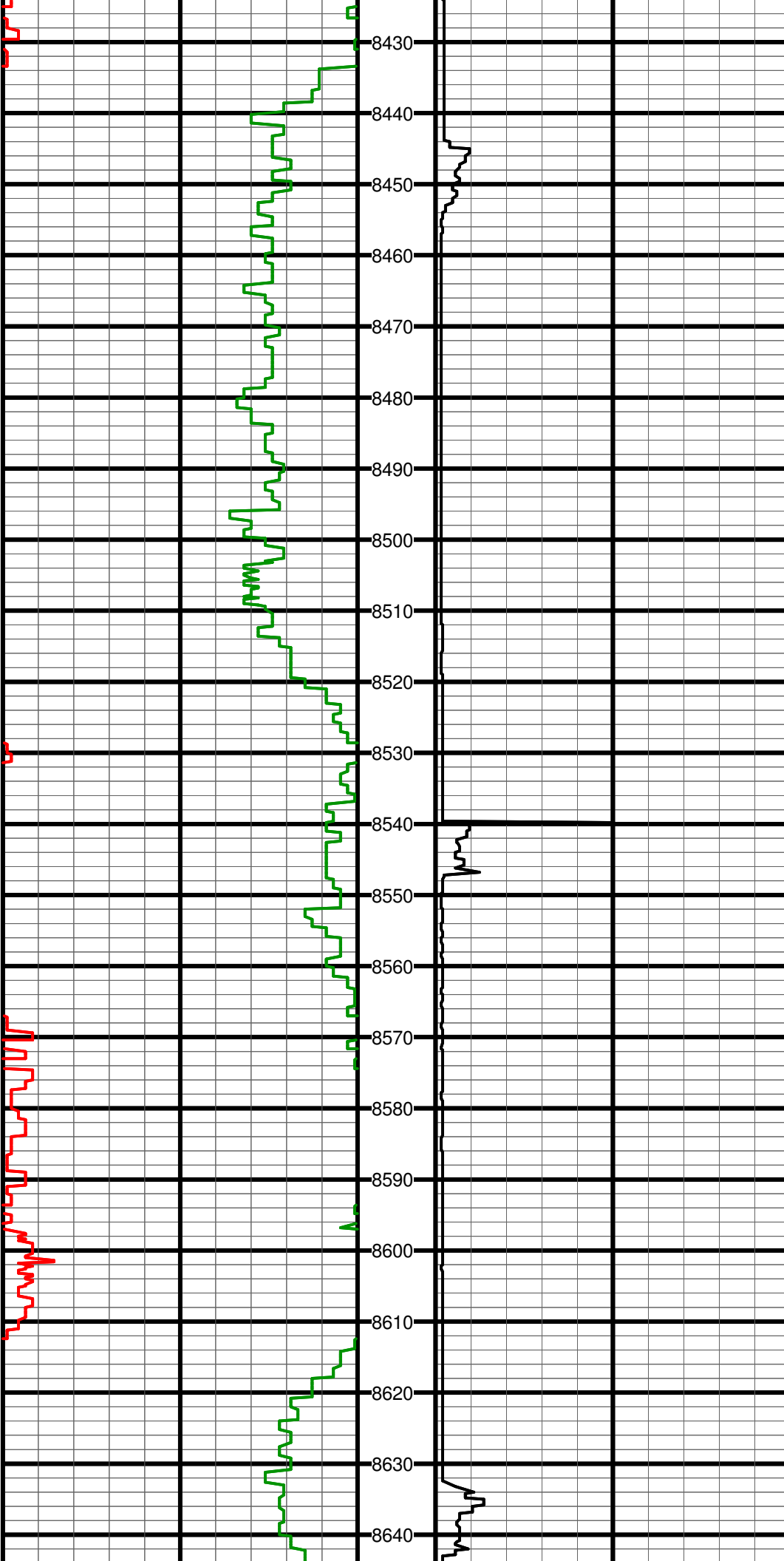
#92 MD:8110.0 TVD:7386.9 I:88.0 A:359.9 VS:486.1

#93 MD:8204.0 TVD:7390.4 I:87.7 A:0.5 VS:580.1



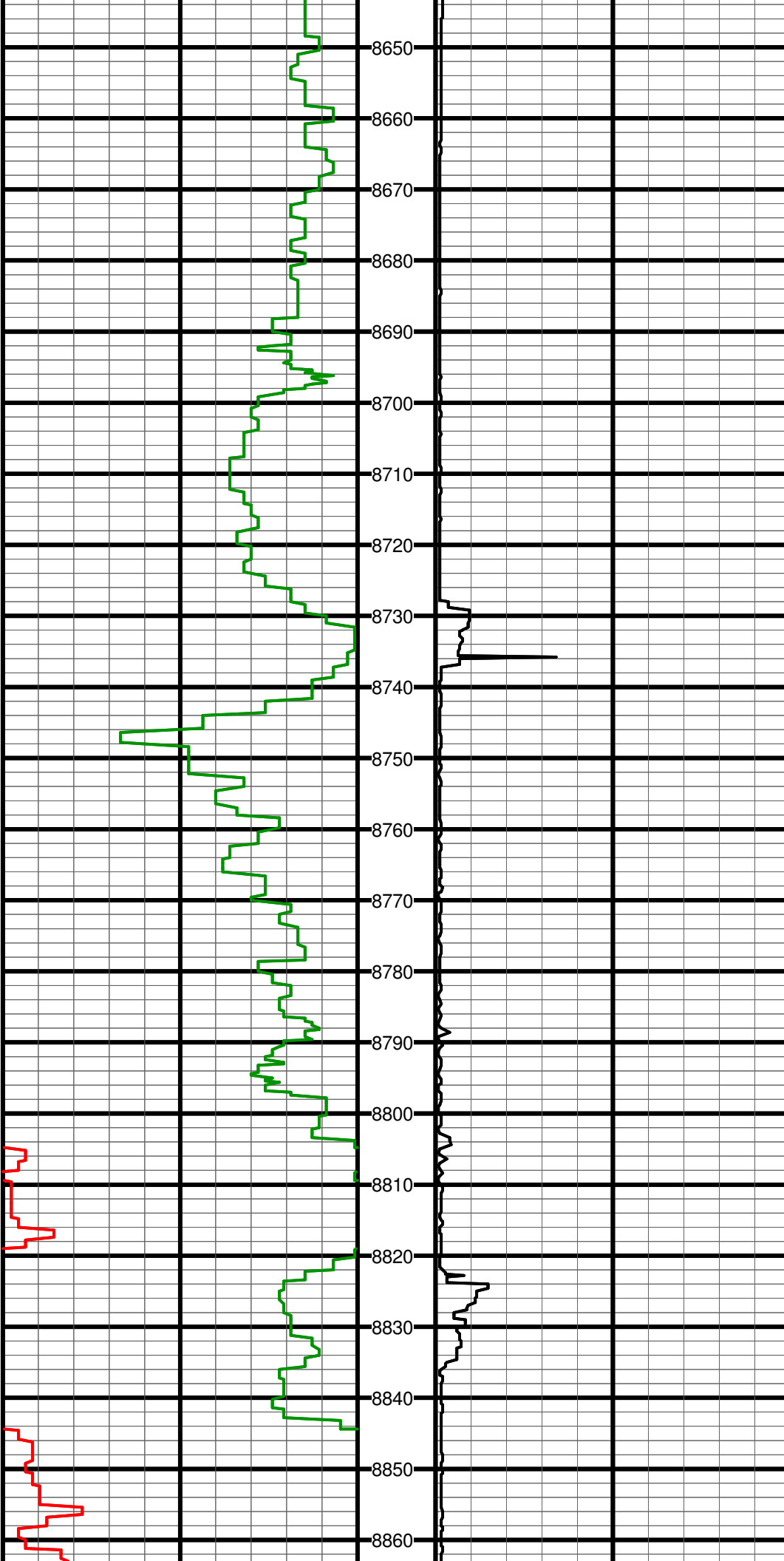
#94 MD:8299.0 TVD:7392.9 I:89.3 A:1.2 VS:675.0

#95 MD:8394.0 TVD:7393.8 I:89.6 A:1.3 VS:770.0



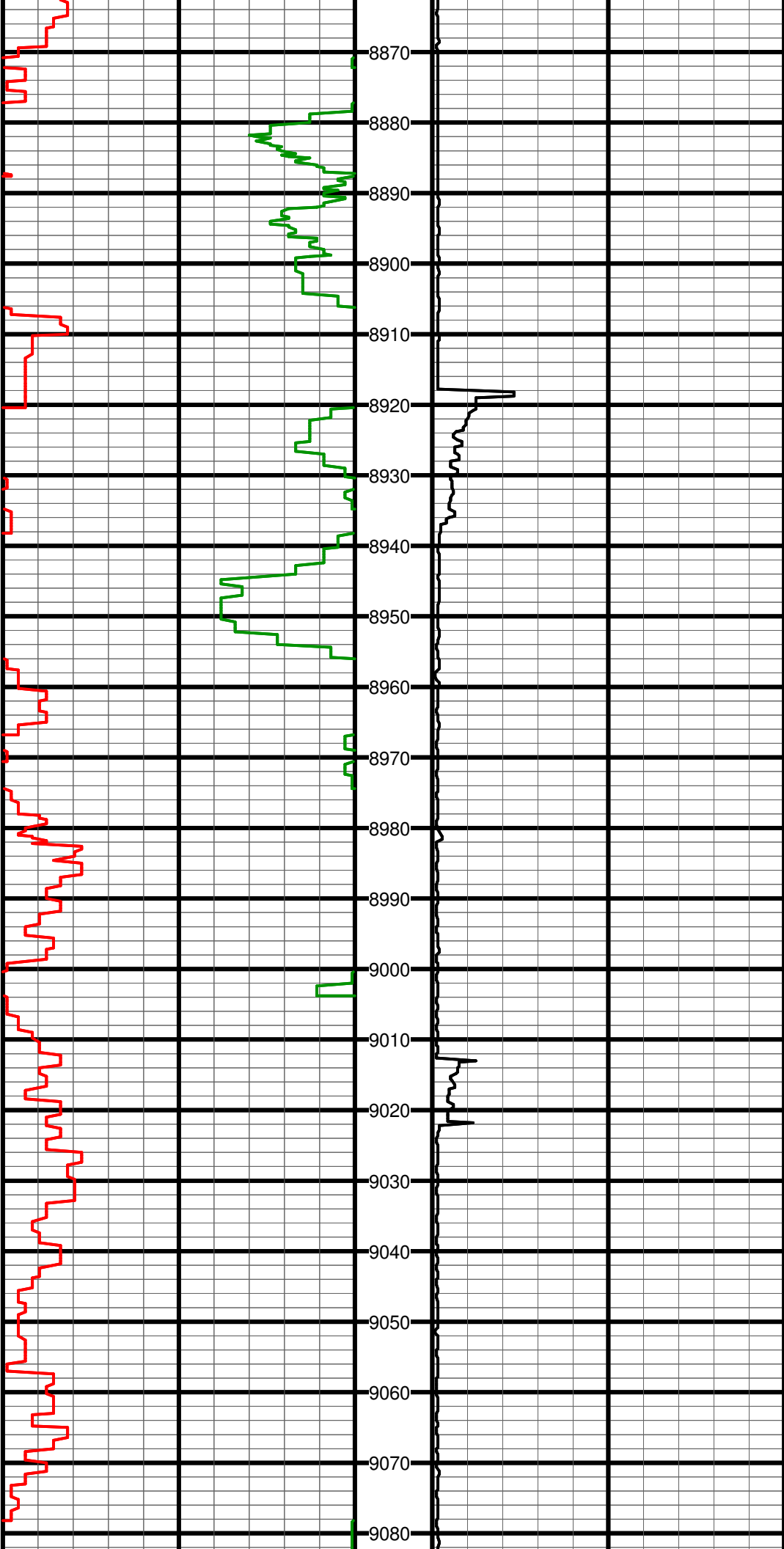
#96 MD:8489.0 TVD:7395.0 I:88.9 A:0.6 VS:865.0

#97 MD:8583.0 TVD:7397.2 I:88.5 A:0.0 VS:958.9



#98 MD:8678.0 TVD:7400.1 I:88.0 A:359.3 VS:1053.9

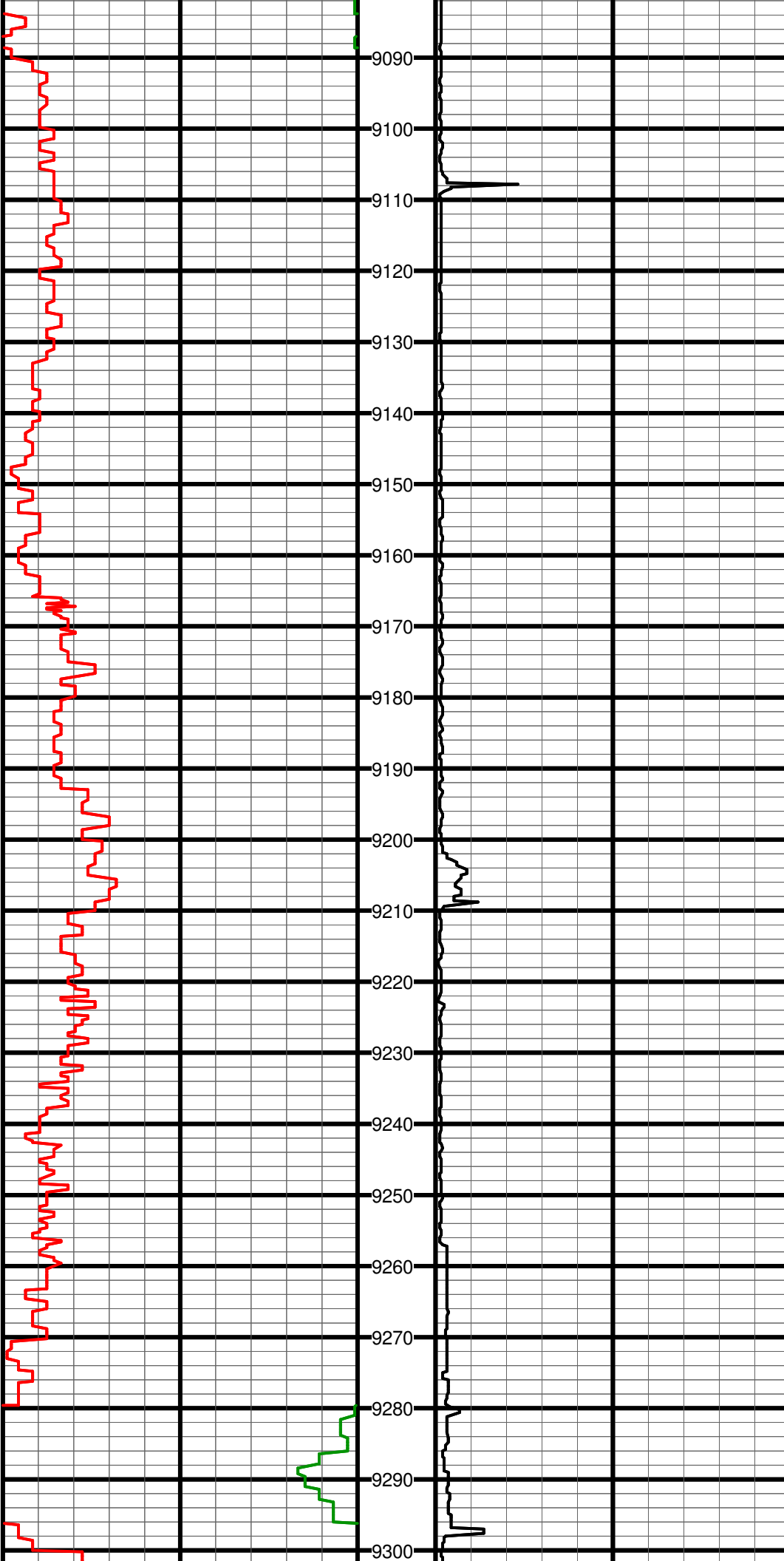
#99 MD:8773.0 TVD:7402.7 I:88.8 A:0.0 VS:1148.8



#100 MD:8867.0 TVD:7404.5 I:89.0 A:0.0 VS:1242.8

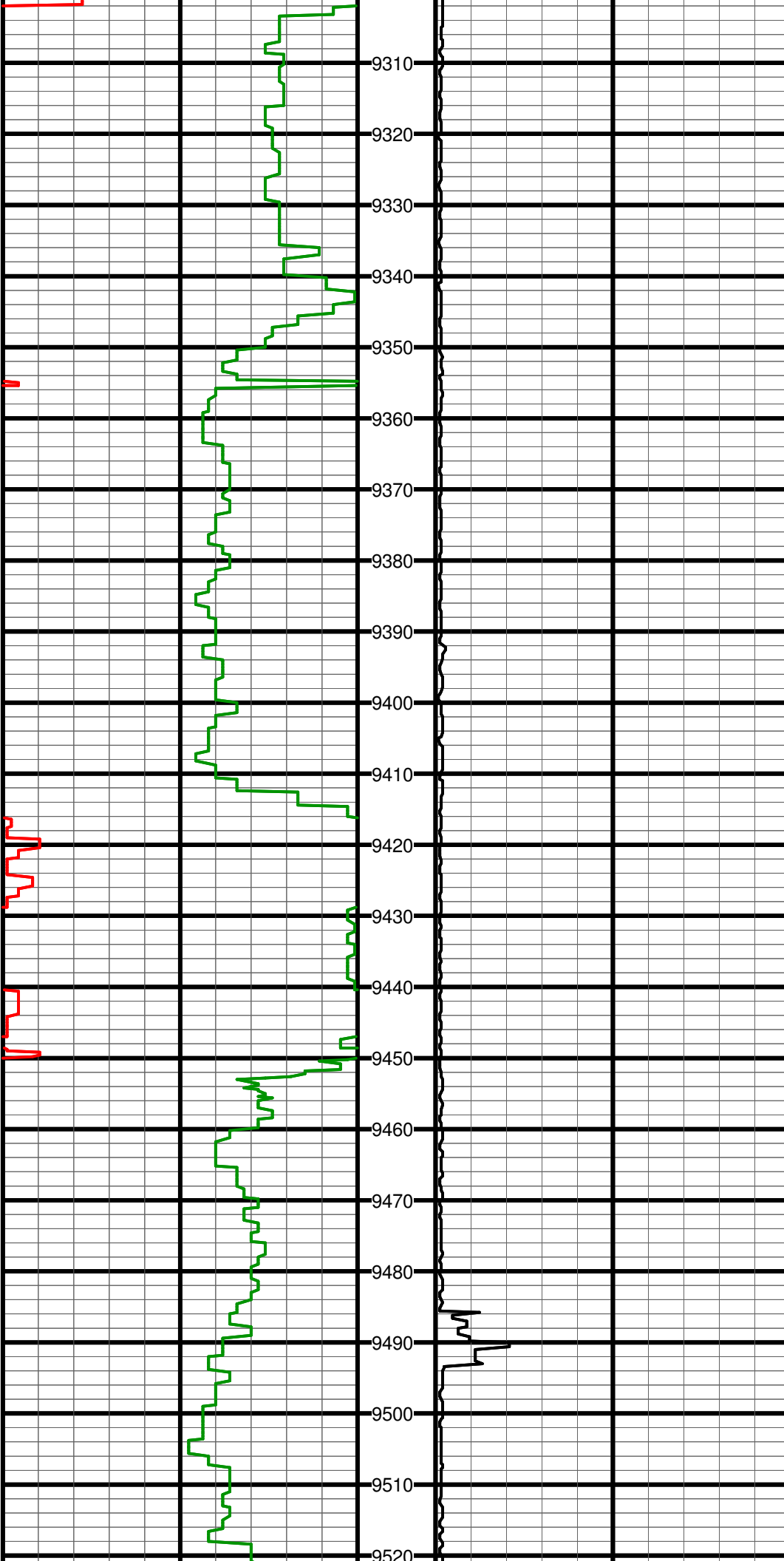
#101 MD:8962.0 TVD:7407.1 I:87.9 A:1.5 VS:1337.8

#102 MD:9057.0 TVD:7411.1 I:87.2 A:0.3 VS:1432.7



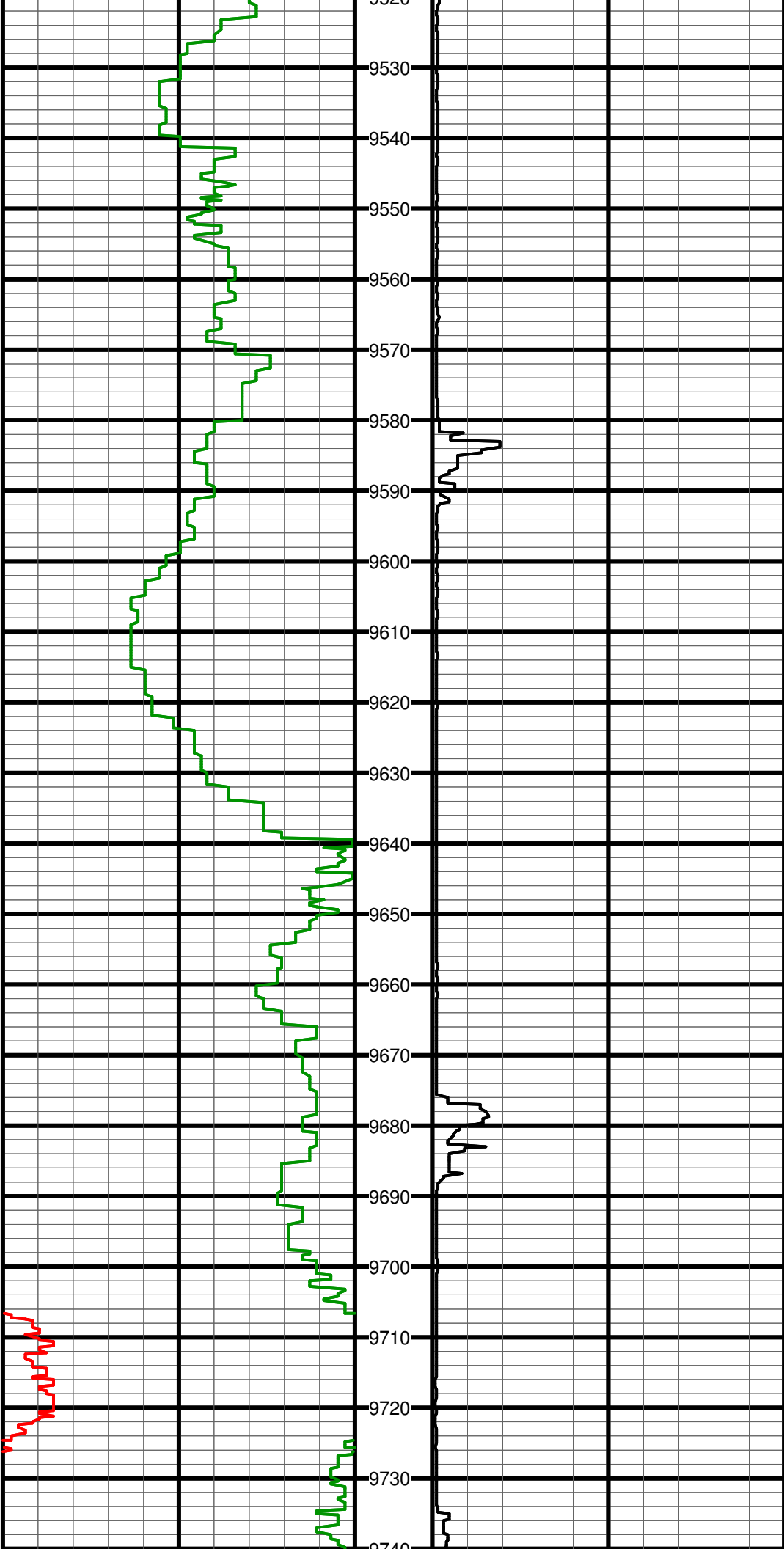
#103 MD:9152.0 TVD:7416.0 I:86.9 A:0.3 VS:1527.5

#104 MD:9246.0 TVD:7420.7 I:87.4 A:0.0 VS:1621.4



#105 MD:9341.0 TVD:7424.8 I:87.6 A:359.6 VS:1716.3

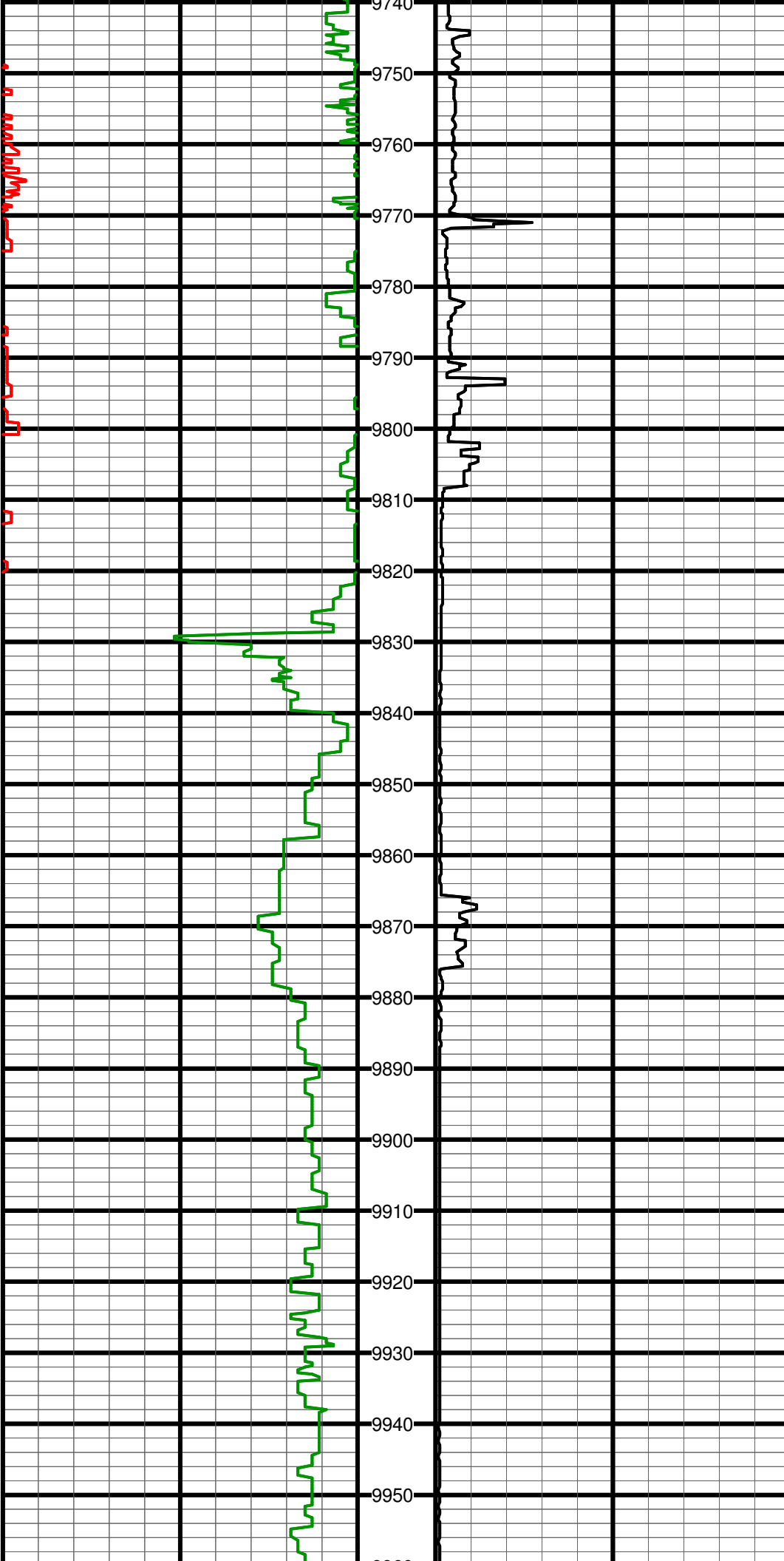
#106 MD:9436.0 TVD:7428.8 I:87.6 A:359.6 VS:1811.3



#107 MD:9531.0 TVD:7432.7 I:87.7 A:358.9 VS:1906.2

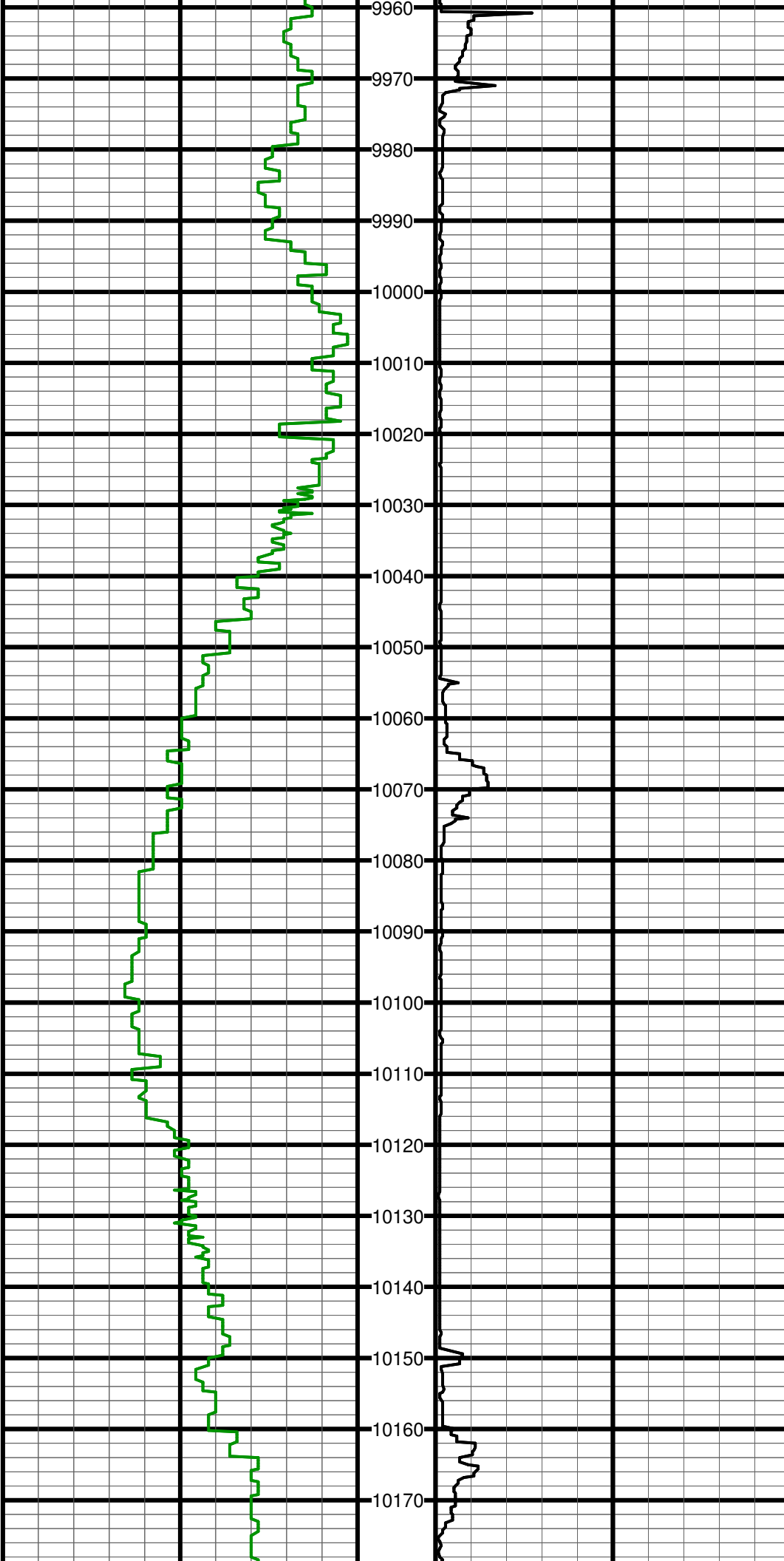
#108 MD:9626.0 TVD:7435.6 I:88.8 A:359.4 VS:2001.1

#109 MD:9720.0 TVD:7437.8 I:88.6 A:0.3 VS:2095.1



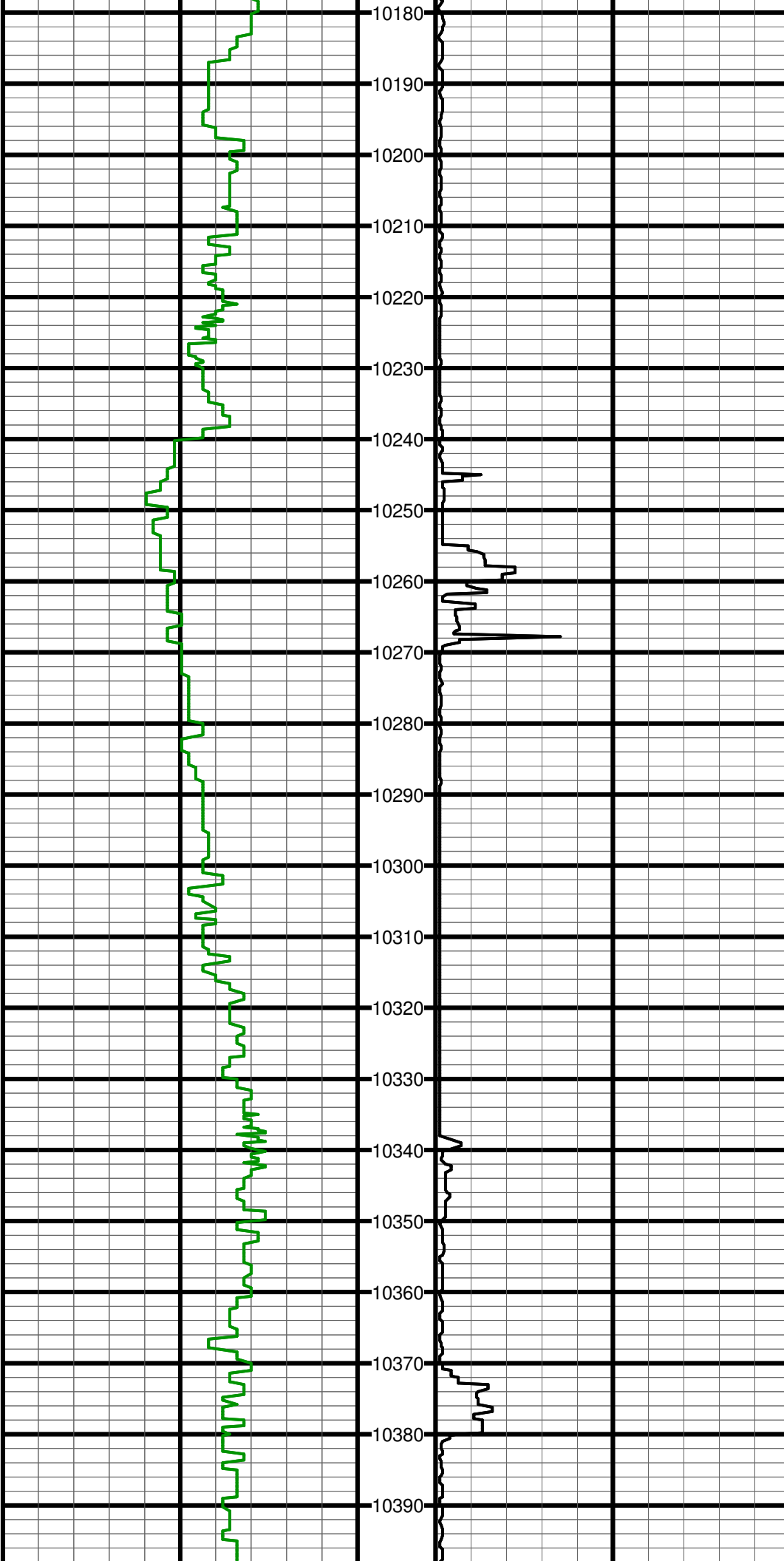
#110 MD:9815.0 TVD:7438.6 I:90.4 A:359.7 VS:2190.1

#111 MD:9910.0 TVD:7438.9 I:89.2 A:359.7 VS:2285.1



#112 MD:10005.0 TVD:7439.4 I:90.2 A:359.1 VS:2380.1

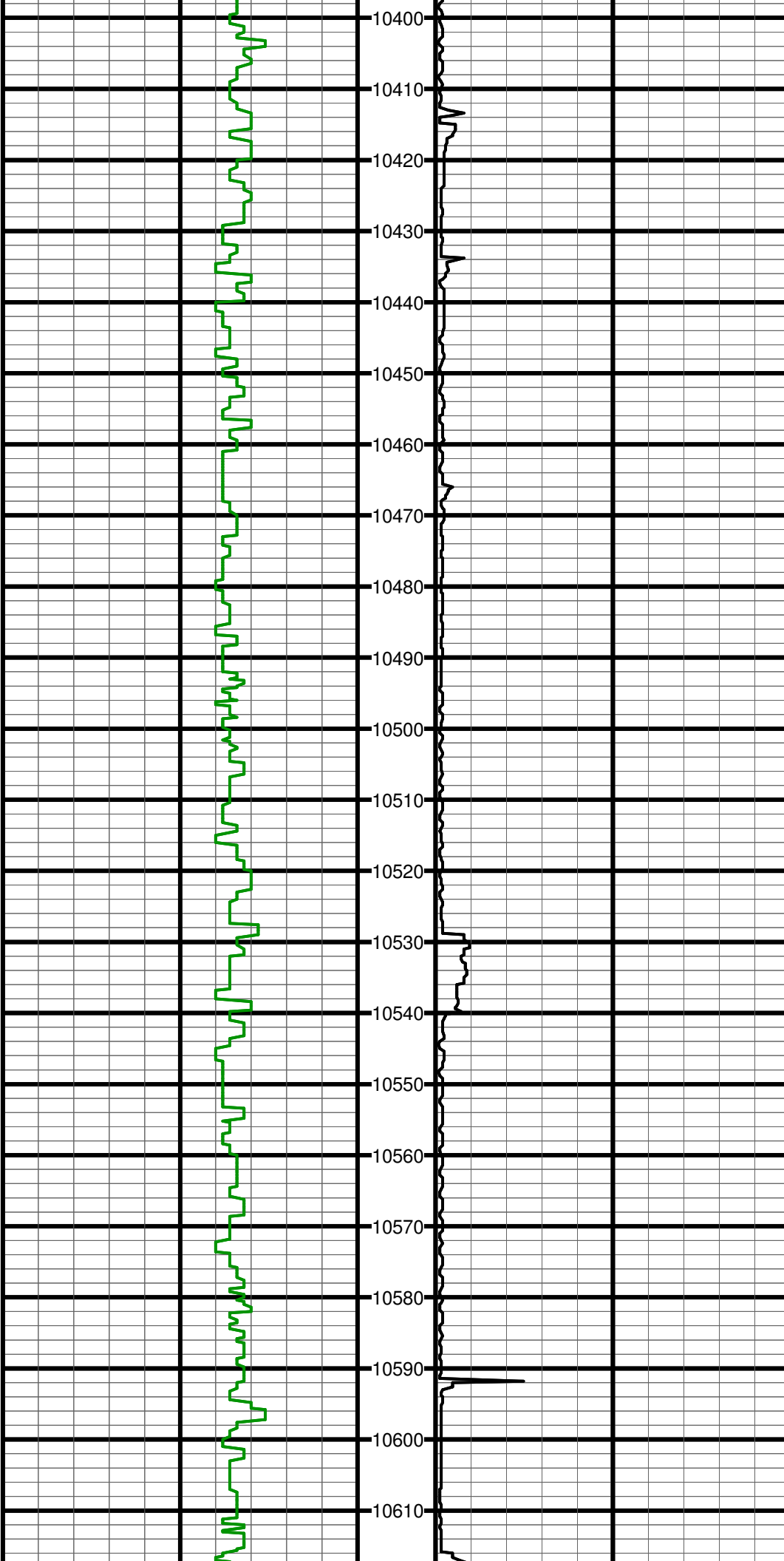
#113 MD:10099.0 TVD:7439.1 I:90.2 A:359.7 VS:2474.1



#114 MD:10194.0 TVD:7437.7 I:91.5 A:1.3 VS:2569.0

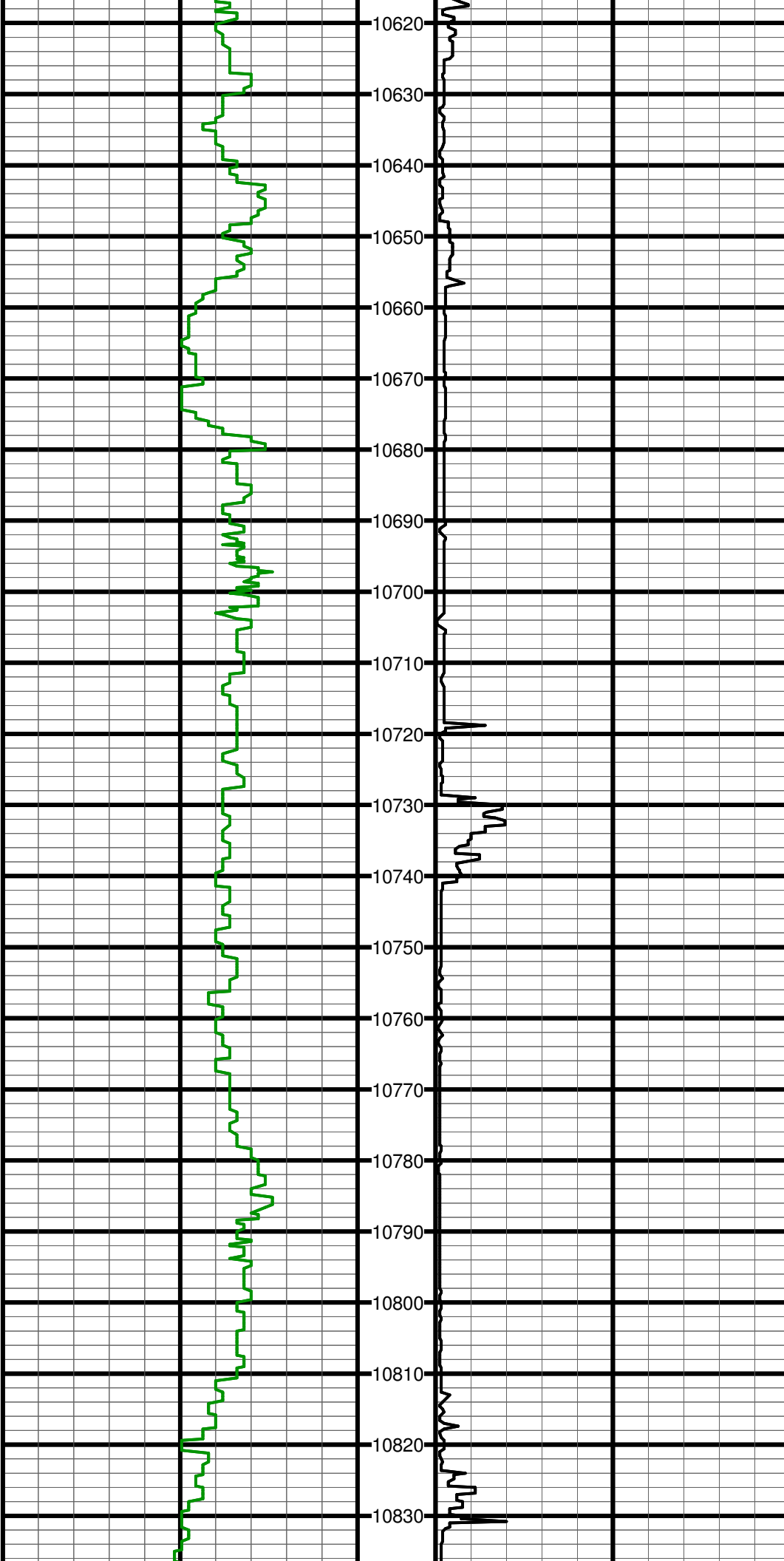
#115 MD:10289.0 TVD:7436.7 I:89.7 A:1.0 VS:2664.0

#116 MD:10384.0 TVD:7437.7 I:89.1 A:2.1 VS:2759.0



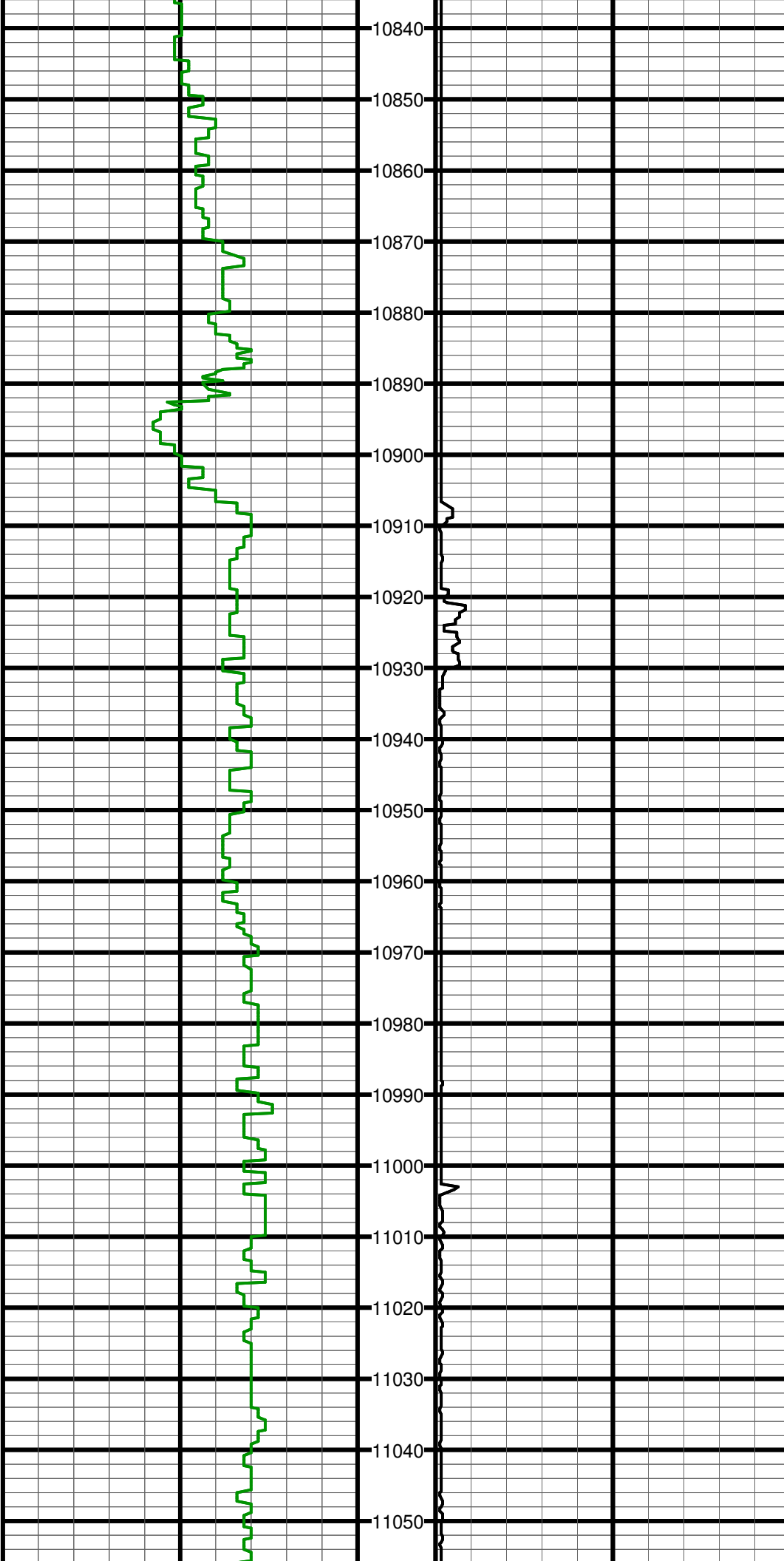
#117 MD:10479.0 TVD:7439.0 I:89.3 A:2.8 VS:2853.9

#118 MD:10574.0 TVD:7439.7 I:89.8 A:0.5 VS:2948.8



#119 MD:10668.0 TVD:7439.5 I:90.5 A:0.5 VS:3042.8

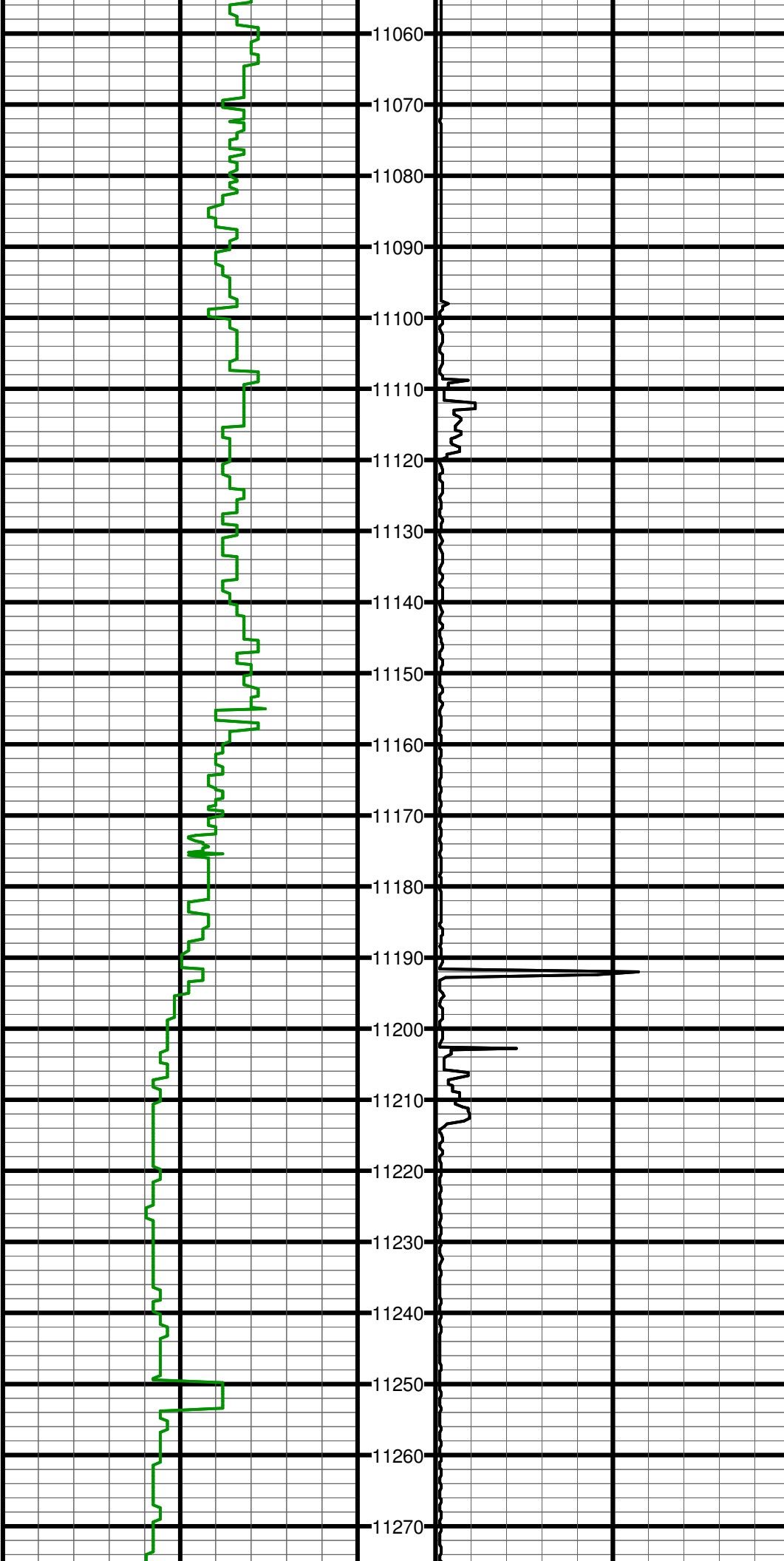
#120 MD:10763.0 TVD:7439.8 I:89.1 A:359.3 VS:3137.8



#121 MD:10858.0 TVD:7440.4 I:90.2 A:358.6 VS:3232.8

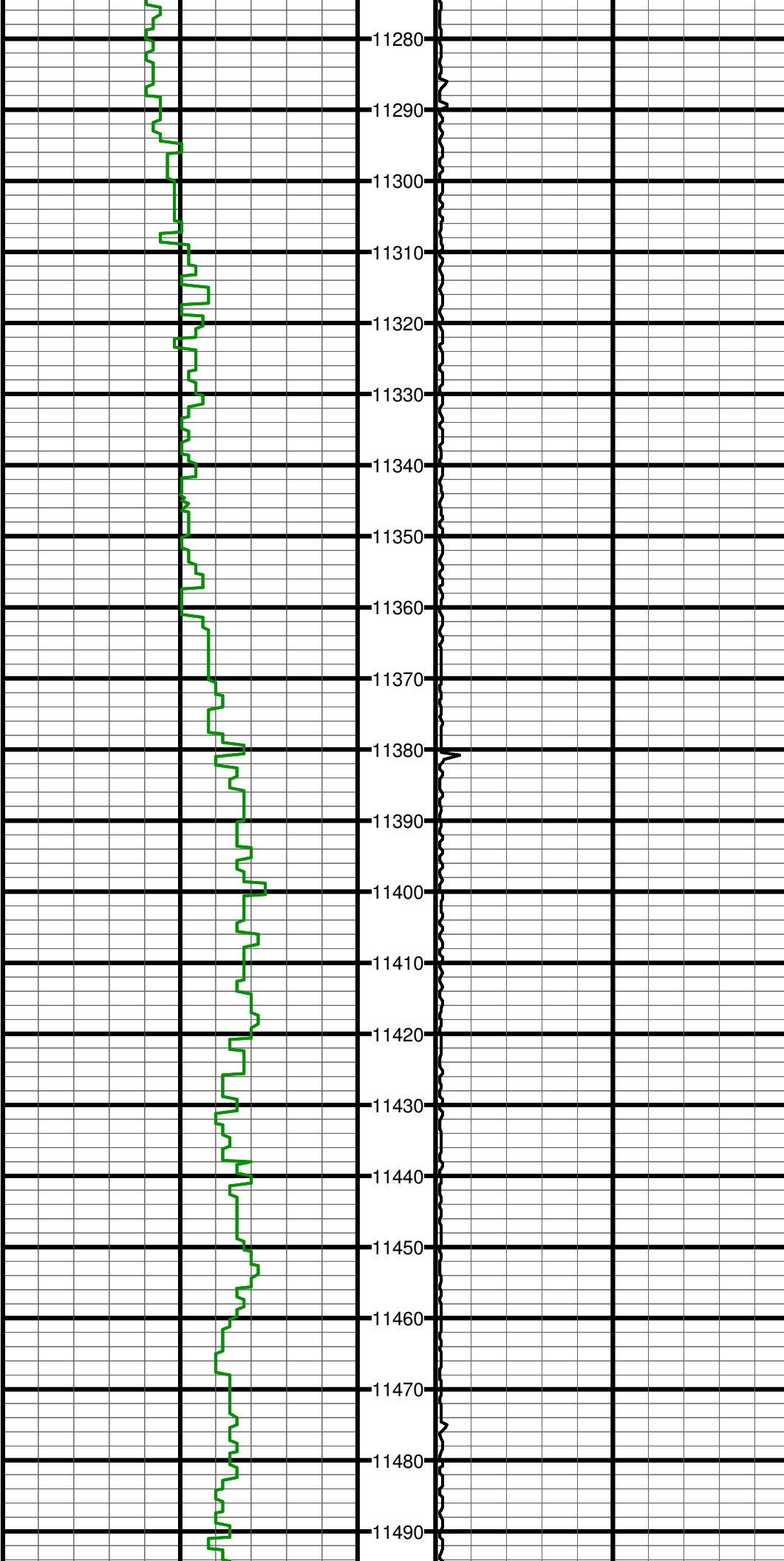
#122 MD:10953.0 TVD:7440.8 I:89.3 A:358.9 VS:3327.8

#123 MD:11048.0 TVD:7441.4 I:90.0 A:358.6 VS:3422.7



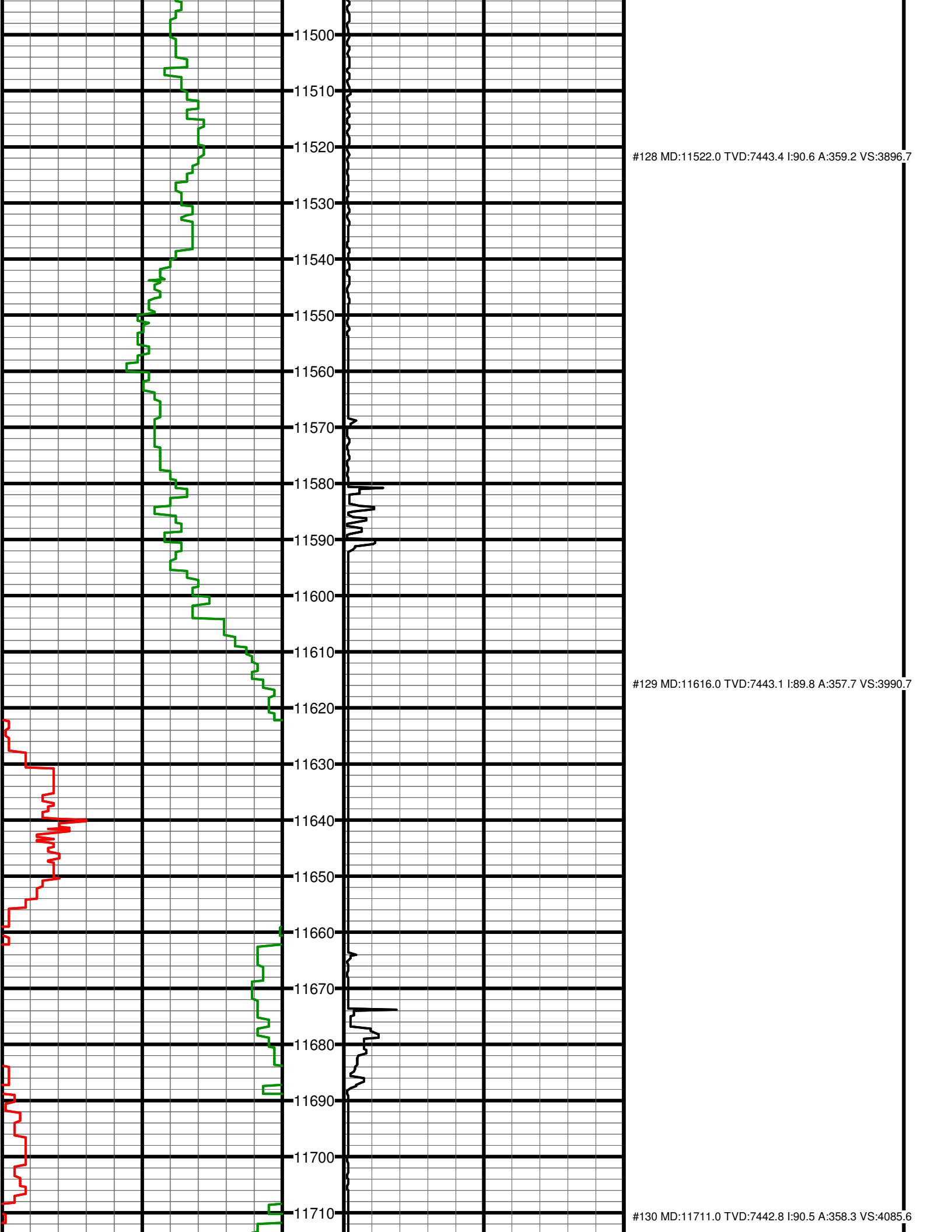
#124 MD:11142.0 TVD:7442.5 I:88.7 A:359.0 VS:3516.7

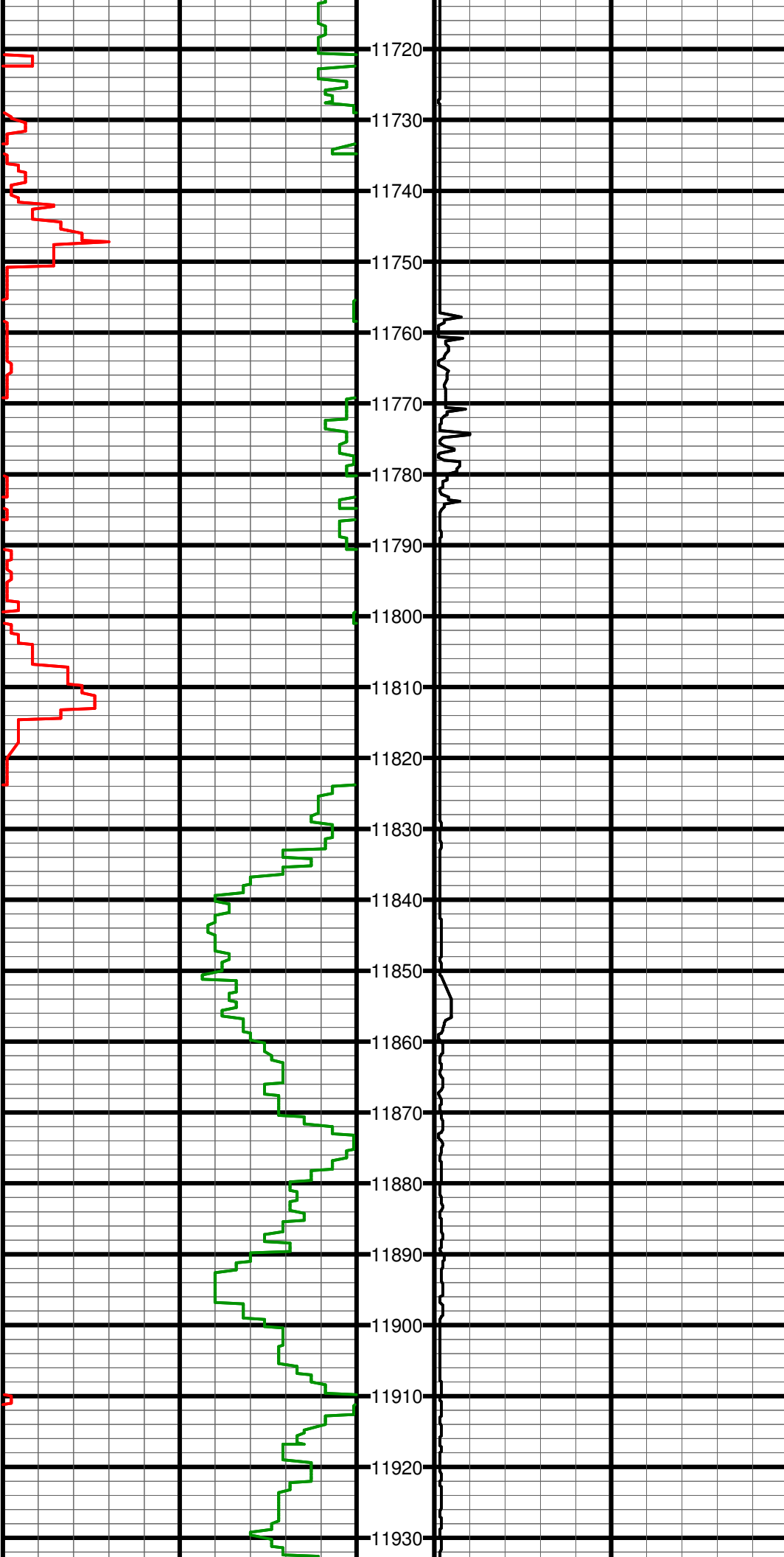
#125 MD:11237.0 TVD:7443.7 I:89.8 A:359.8 VS:3611.7



#126 MD:11332.0 TVD:7444.1 I:89.8 A:0.2 VS:3706.7

#127 MD:11427.0 TVD:7444.1 I:90.2 A:359.9 VS:3801.7





#131 MD:11806.0 TVD:7442.6 I:89.8 A:359.0 VS:4180.6

#132 MD:11901.0 TVD:7442.5 I:90.3 A:357.7 VS:4275.5

#133 MD:11920.0 TVD:7442.3 I:90.6 A:357.8 VS:4294.5

