



Digital Drilling Data
Systems, LLC

MD Build

(Scale: 5":100' (10'))

Company: Cathedral Energy Services

State: CO

Well: Mathews 4A-14H

County: Weld

Field: Dj Basin

Country: USA

Well ID: 051233697500

Job Number: 135235

Location: Weld County

Elev KB: 5131

Operator 1: Encana Oil Gas

Elev DF:

Operator 2:

Elev GL: 5118

Comment 1:

Comment 2:

Comment 3:

Comment 4:

Comment 5:

Hole Data

Casing Record

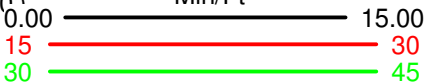
Size	From	To	Size	From	To
12.25	0	1323	9.625	0	1323
8.75	1326	7748			

Tool Run Data

Tool S/N	Run #1	Run #2	Run #3	Run #4	Run #5
Cal Factor	1070				
Gamma Offset	3.43				
Gamma Offset	40.97				
Start Depth	5000				
Start Date	5/29/13				
Start Time	22:00				
End Depth	7748				
End Date	6/1/13				
End Time	18:30				

Depth
5":100' (10")

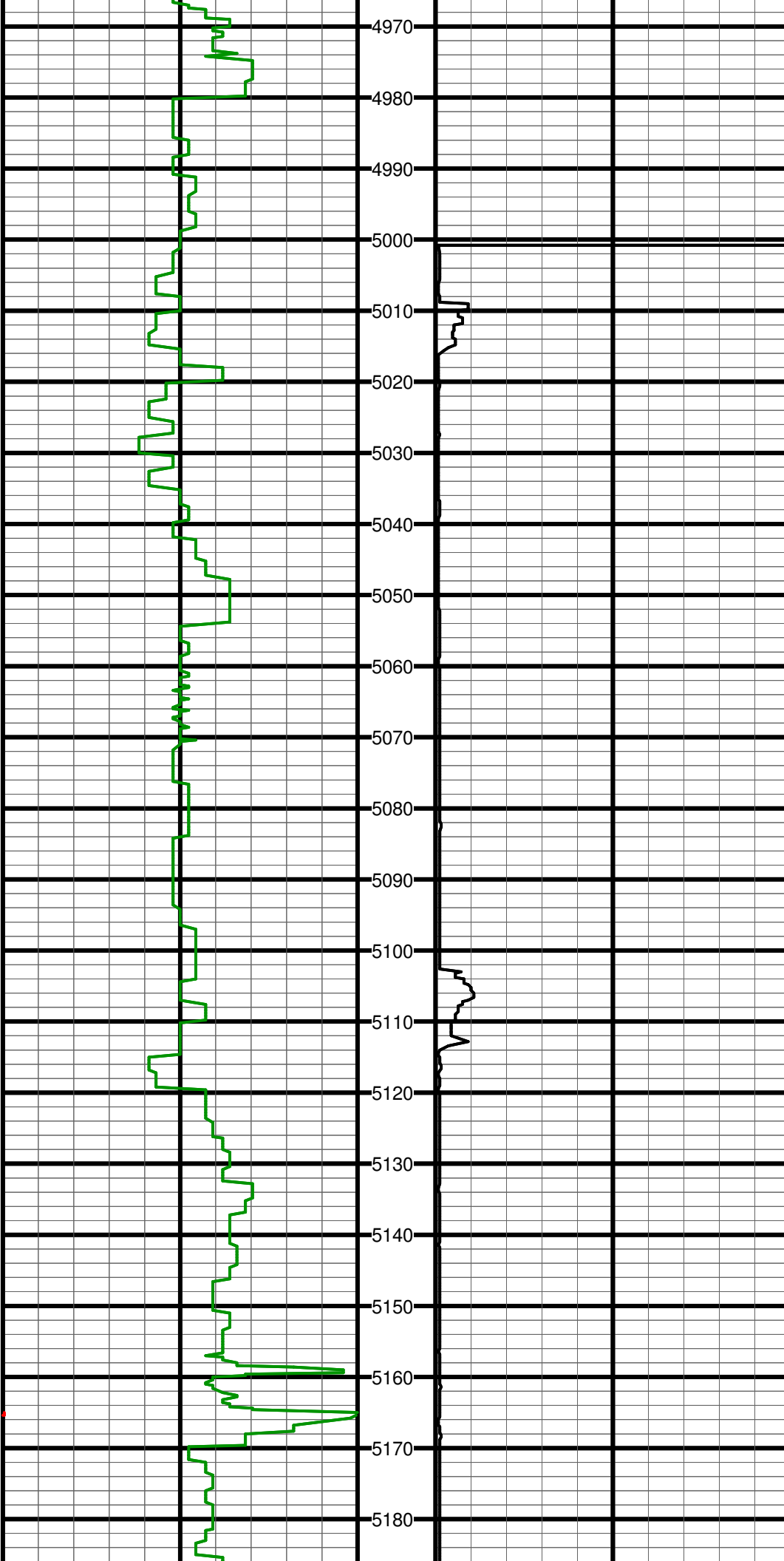
ROP (MD) Track: 1
Min/Ft



Gamma API (MD) Track: 1
API

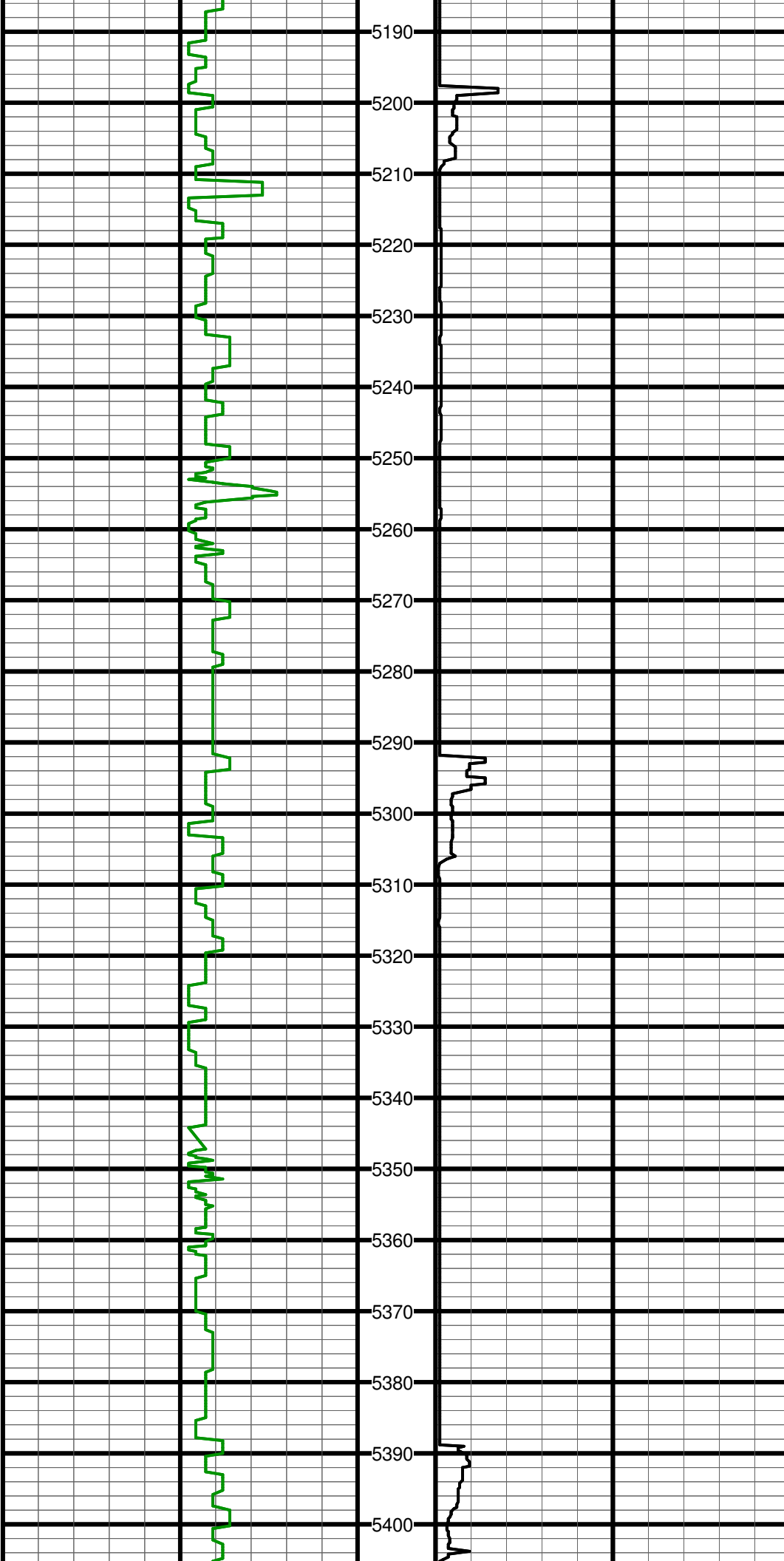


#39 MD:4953.0 TVD:4888.1 I:0.9 A:286.5 VS:-424.9



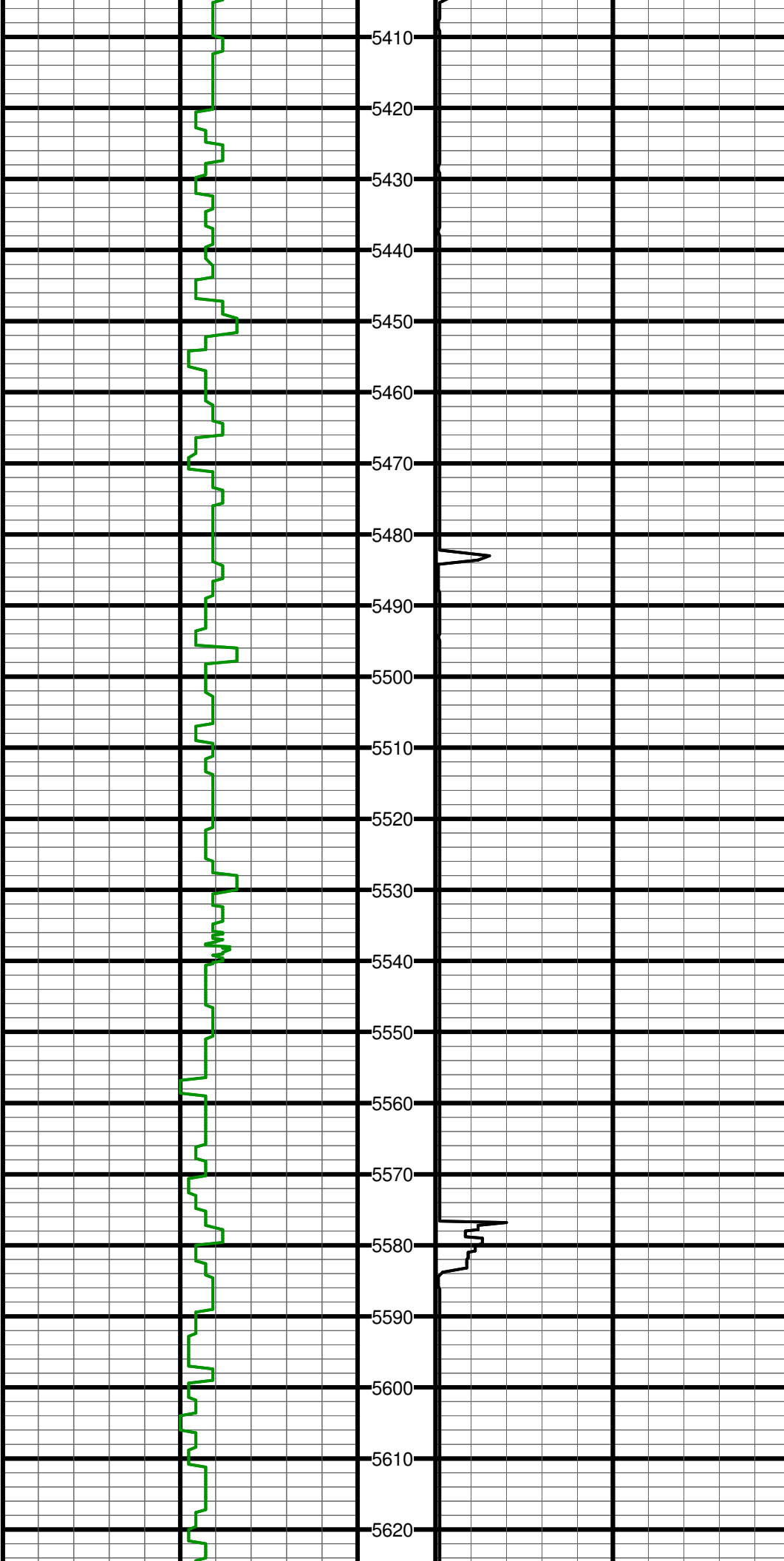
#40 MD:5048.0 TVD:4983.0 I:1.6 A:4.1 VS:-423.3

#41 MD:5143.0 TVD:5078.0 I:1.3 A:31.2 VS:-421.1



#42 MD:5238.0 TVD:5173.0 I:0.5 A:54.7 VS:-419.9

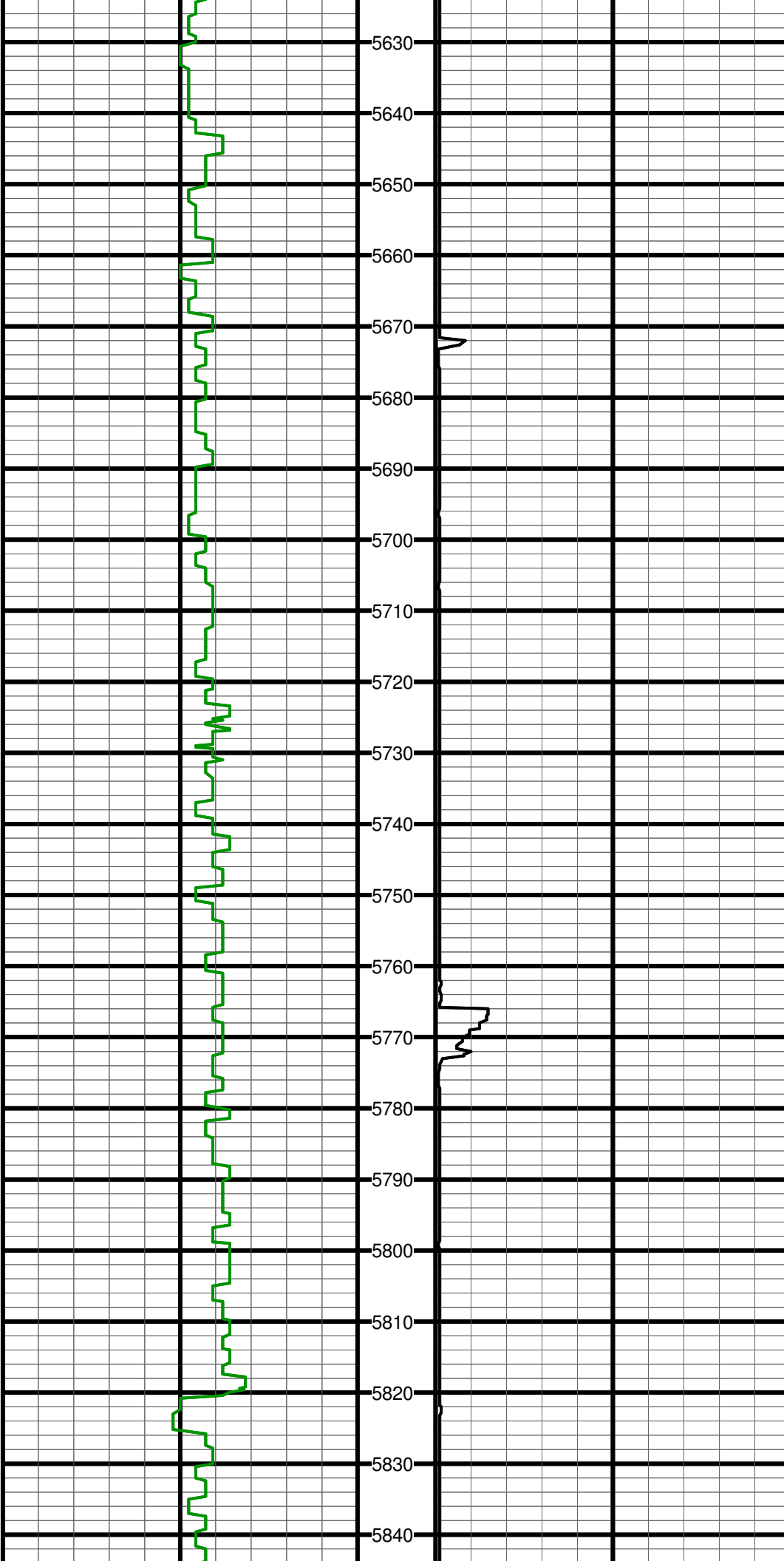
#43 MD:5333.0 TVD:5268.0 I:0.6 A:80.6 VS:-419.6



#44 MD:5427.0 TVD:5362.0 I:1.7 A:183.9 VS:-420.9

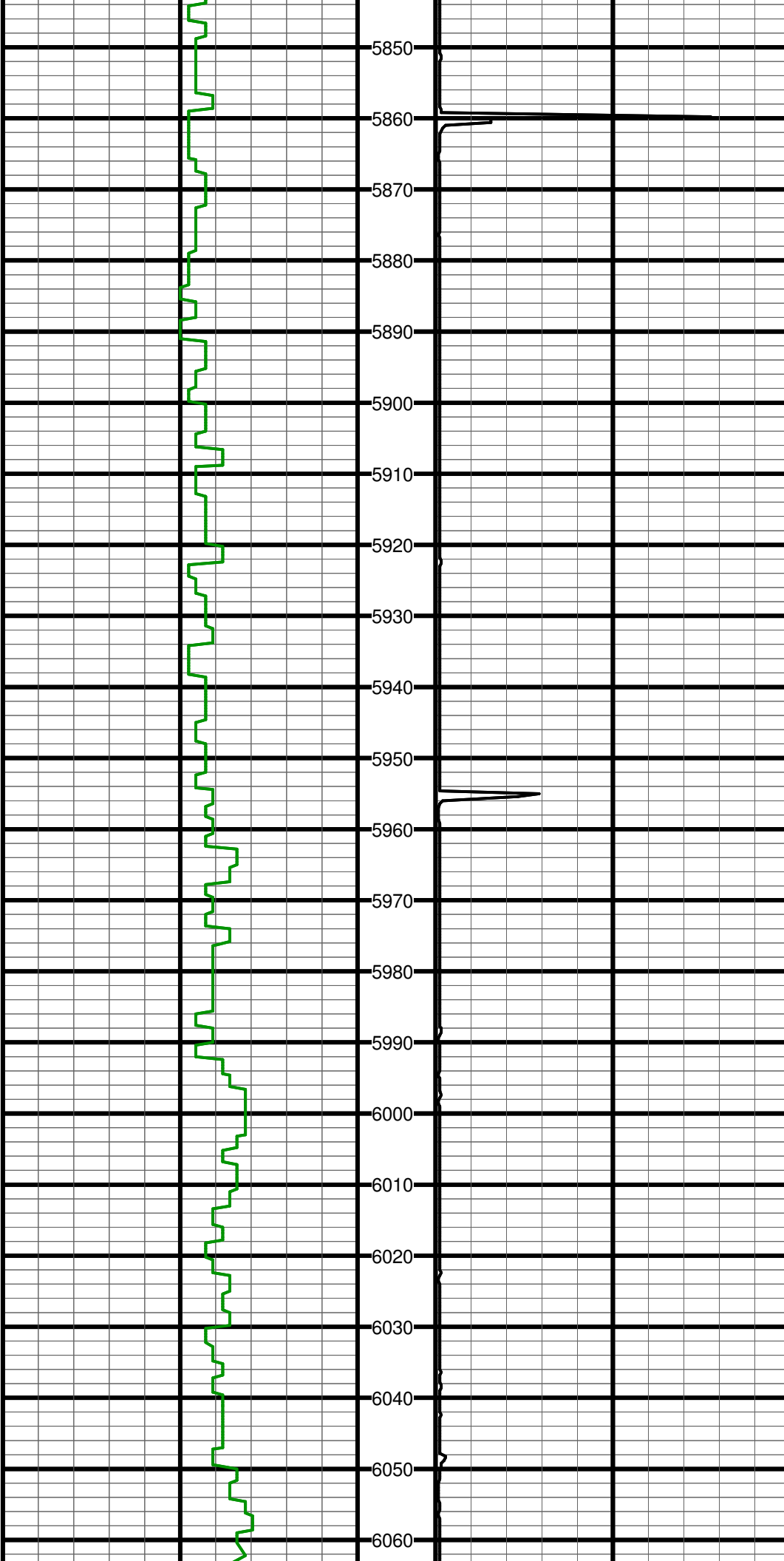
#45 MD:5522.0 TVD:5456.9 I:1.6 A:216.4 VS:-423.4

#46 MD:5617.0 TVD:5551.9 I:2.3 A:191.6 VS:-426.3



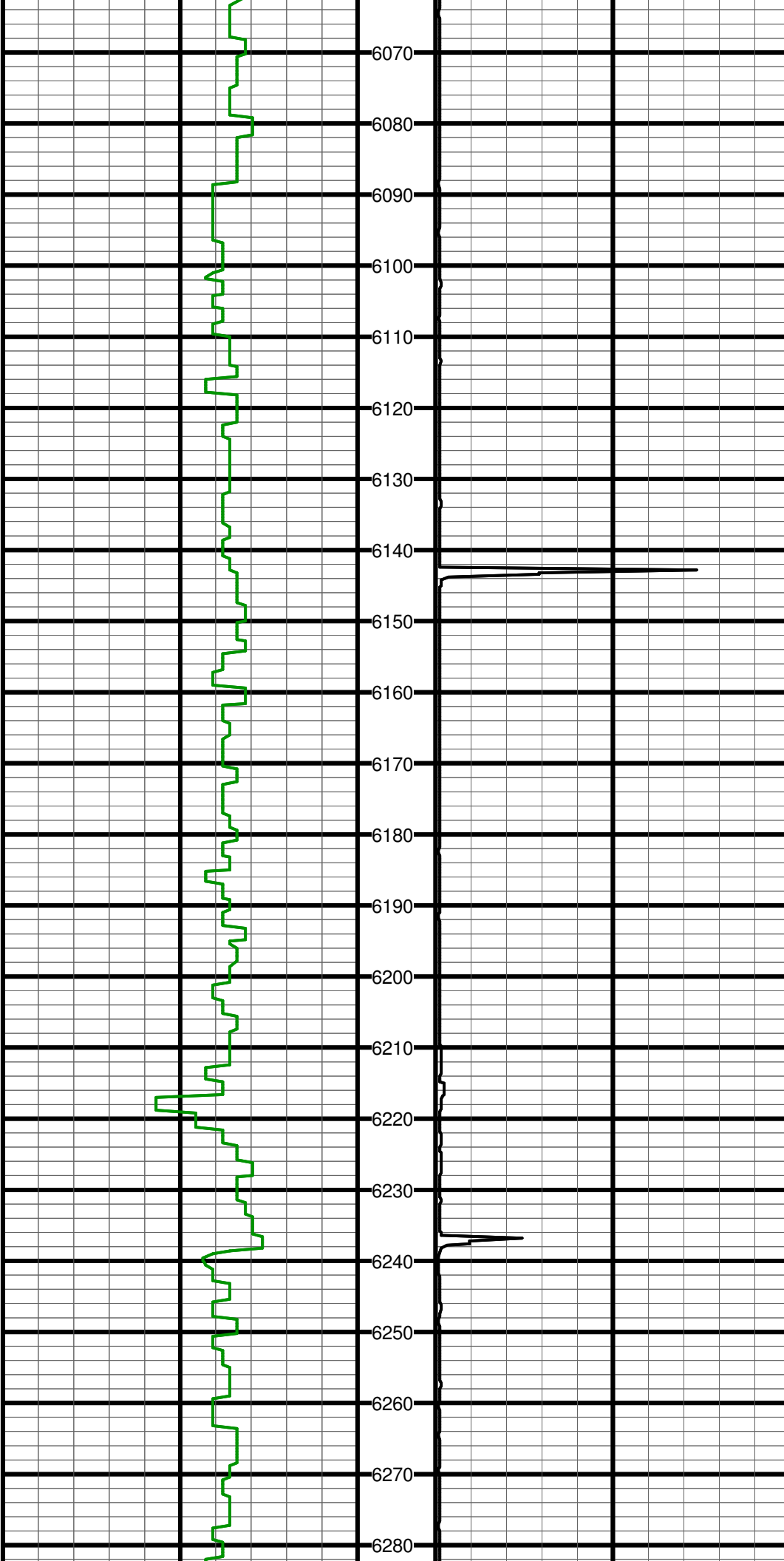
#47 MD:5711.0 TVD:5645.8 I:2.0 A:202.5 VS:-429.7

#48 MD:5806.0 TVD:5740.8 I:0.7 A:150.3 VS:-431.7



#49 MD:5901.0 TVD:5835.8 I:0.9 A:153.9 VS:-432.9

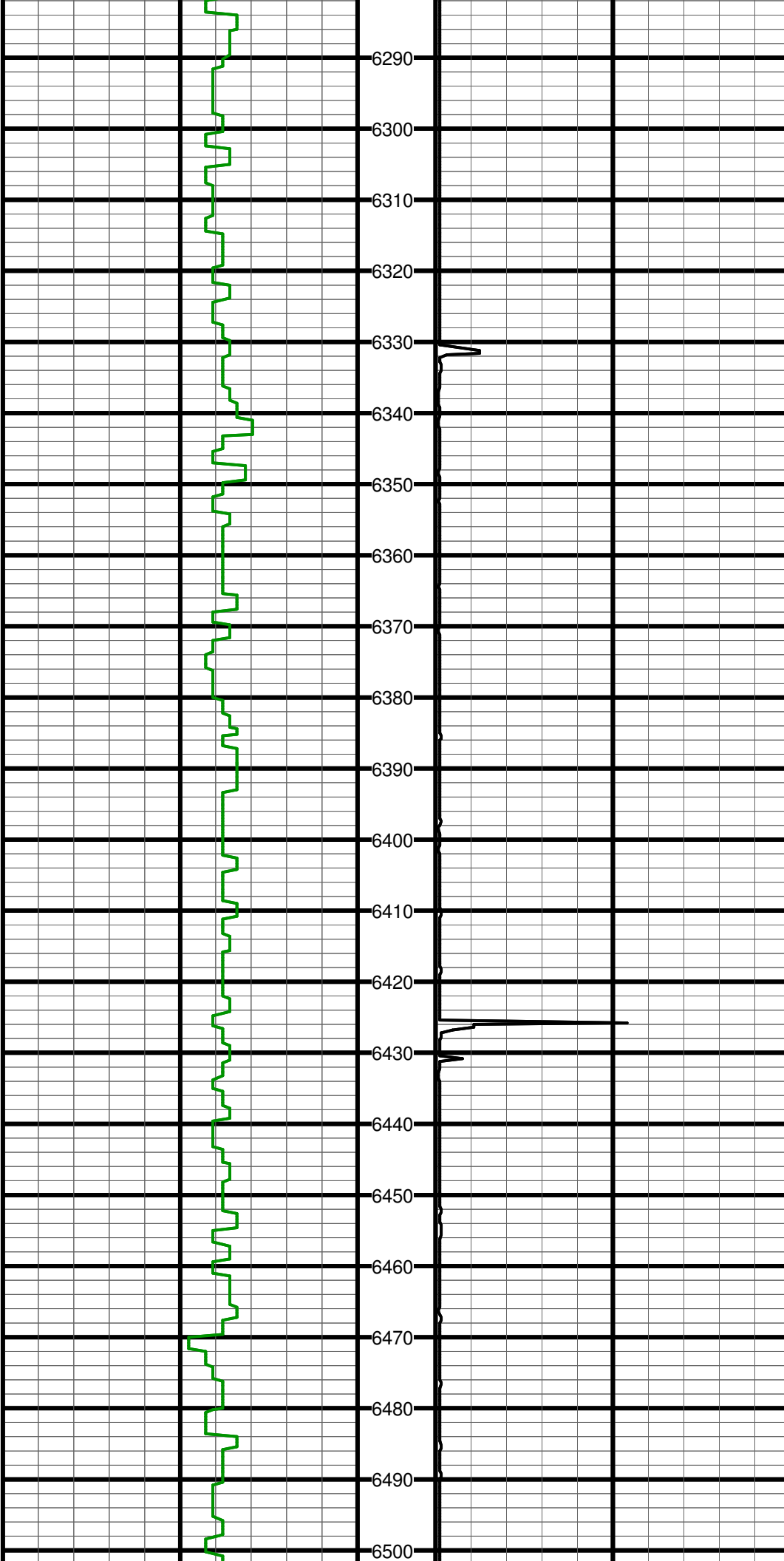
#50 MD:5995.0 TVD:5929.8 I:0.8 A:144.4 VS:-434.1



#51 MD:6090.0 TVD:6024.8 I:0.9 A:158.5 VS:-435.3

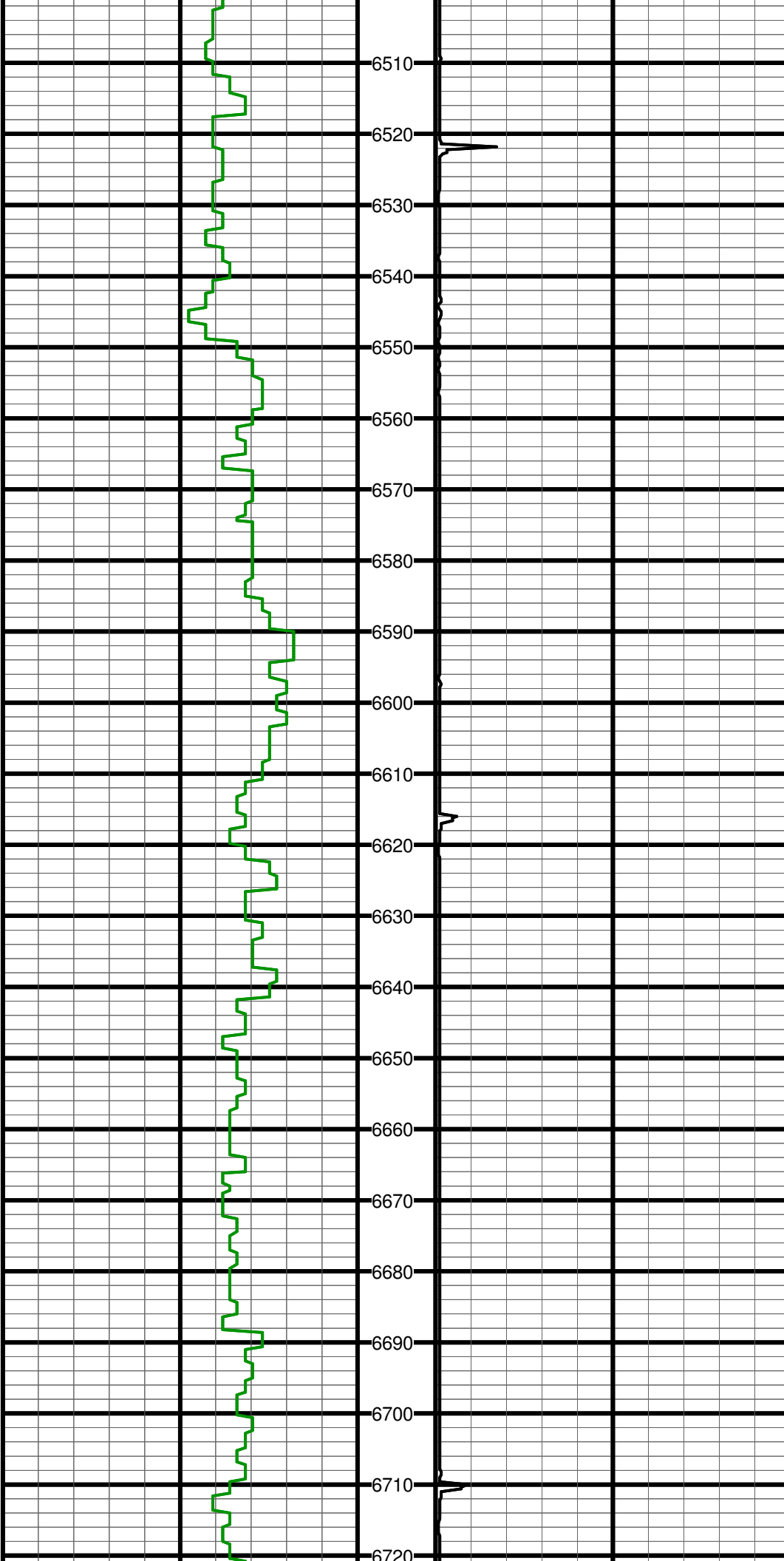
#52 MD:6185.0 TVD:6119.7 I:1.1 A:88.1 VS:-436.0

#53 MD:6280.0 TVD:6214.7 I:0.8 A:37.1 VS:-435.4



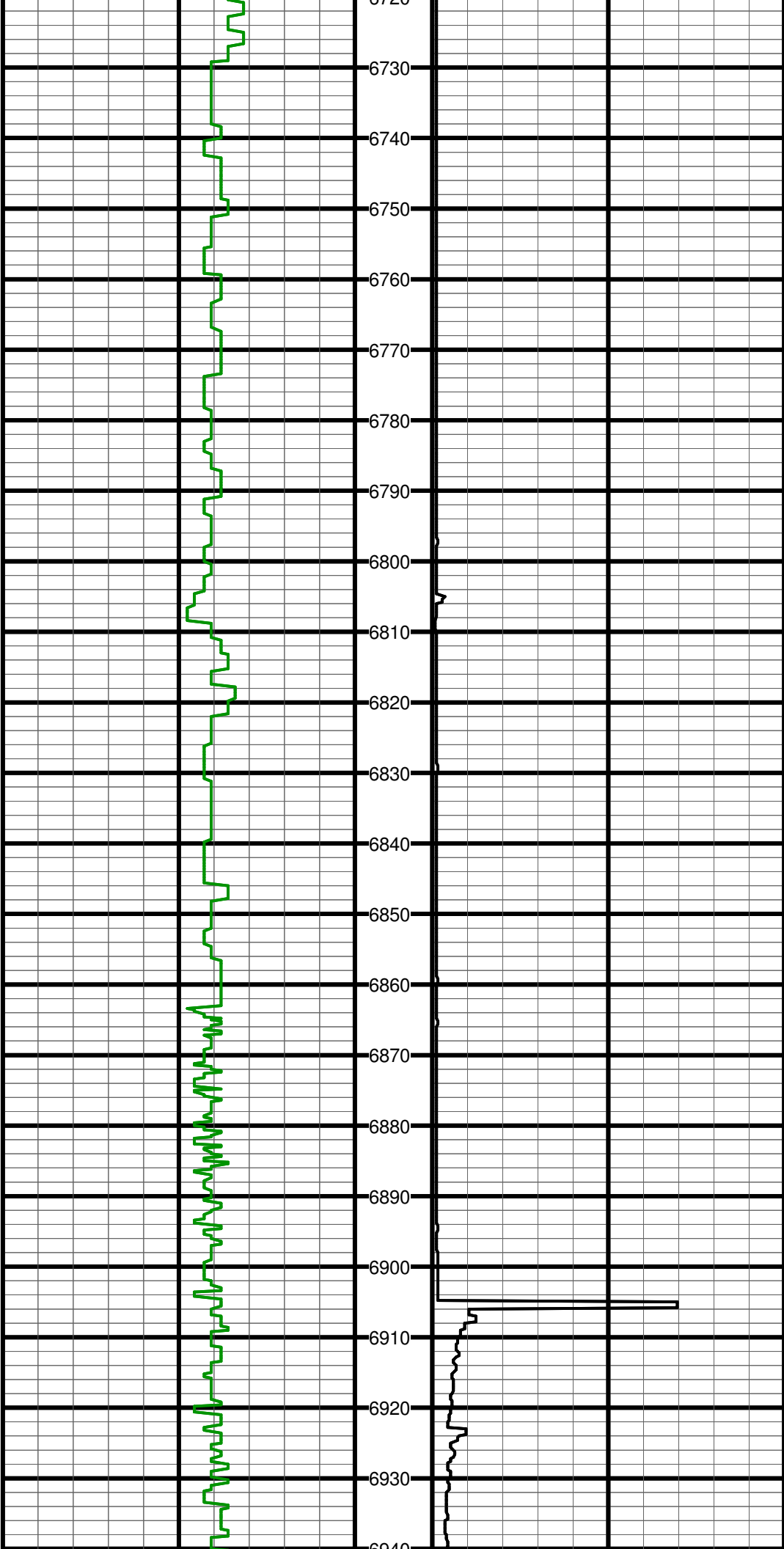
#54 MD:6375.0 TVD:6309.7 I:0.1 A:292.6 VS:-434.9

#55 MD:6470.0 TVD:6404.7 I:0.4 A:220.5 VS:-435.1



#56 MD:6564.0 TVD:6498.7 I:0.4 A:88.2 VS:-435.3

#57 MD:6659.0 TVD:6593.7 I:0.8 A:75.4 VS:-435.1



#58 MD:6754.0 TVD:6688.7 I:0.7 A:64.6 VS:-434.7

#59 MD:6849.0 TVD:6783.7 I:0.6 A:53.9 VS:-434.2

#60 MD:6880.0 TVD:6814.7 I:0.8 A:41.0 VS:-433.9

#61 MD:6912.0 TVD:6846.7 I:3.1 A:11.8 VS:-432.9

