

**ANADARKO PETROLEUM CORP - EBUS
DO NOT MAIL - PO BOX 4995
THE WOODLANDS, Texas**

Harris Federal 36N-E18HZ

Xtreme 8

Post Job Summary

Cement Surface Casing

Prepared for:
Date Prepared: 8/18/2013
Version: 1

Service Supervisor: SMITH, AARON

Submitted by: FINNEY, SEAN

HALLIBURTON

HALLIBURTON

Wellbore Geometry

Job Tubulars					MD		Shoe Joint Length ft
Type	Description	Size in	ID in	Wt lbm/ft	Top ft	Bottom ft	
Casing	9 5/8" Surface Casing	9.63	8.921	36.00	0.00	612.00	42.00
Open Hole Section	13 1/2" Open Hole Section		13.500		0.00	617.00	0.00

HALLIBURTON

Pumping Schedule

Stage /Plug #	Fluid #	Fluid Type	Fluid Name	Surface Density lbm/gal	Avg Rate bbl/min	Surface Volume	Downhole Volume
1	1	Spacer	Fresh Water Spacer	8.33	4.00	10.0 bbl	10.0 bbl
1	2	Cement Slurry	SwiftCem B2	14.20	5.00	235.0 sacks	235.0 sacks
1	3	Spacer	Mud Flush	8.40	4.00	12.0 bbl	12.0 bbl

Fluids Pumped

Stage/Plug # 1 Fluid 1: Fresh Water Spacer
DUMMY MUD / FLUSH / SPACER SBC MATERIAL

Fluid Density: 8.33 lbm/gal
Fluid Volume: 10.00 bbl
Pump Rate: 4.00 bbl/min

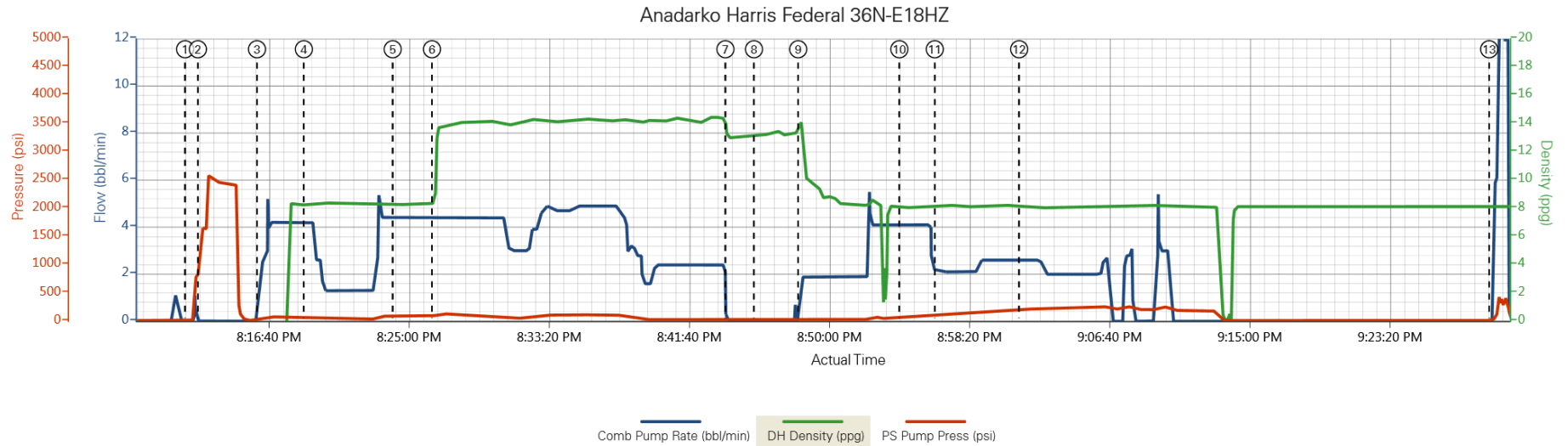
Stage/Plug # 1 Fluid 2: SwiftCem B2
SWIFTCEM (TM) SYSTEM

Fluid Weight: 14.20 lbm/gal
Slurry Yield: 1.53 ft³/sack
Total Mixing Fluid: 7.63 Gal
Surface Volume: 235.0 sacks
Sacks: 235.0 sacks
Calculated Fill: 900.00 ft
Calculated Top of Fluid: 0.00 ft

Stage/Plug # 1 Fluid 3: Mud Flush
DUMMY MUD / FLUSH / SPACER SBC MATERIAL
42 gal/bbl Mud Flush III
3.33 lbm/bbl Mud Flush III
42 gal/bbl Mud Flush III

Fluid Density: 8.40 lbm/gal
Fluid Volume: 12.00 bbl
Pump Rate: 4.00 bbl/min

Data Acquisition



1 Start Job 3 Pump Spacer 1 5 Pump Spacer 1 7 Shutdown 9 Clean Lines 11 Spacer Returns to Surface 13 End Job
 2 Test Lines 4 Pump Spacer 2 6 Pump Cement 8 Drop Top Plug 10 Pump Displacement 12 Cement Returns to Surface

▼ Halliburton | iCem Service®

Created: 2013-08-02 17:35:16 , Version: 1.4.96

Edit

Customer: ANADARKO PETROLEUM CORP - EBUS

Job Date: 8/2/2013 7:18:25 PM

Well: Harris Federal

Representative: Aaron Smith

Sales Order #: 900640418

Thanks: Aaron Smith and Crew

HALLIBURTON

Service Supervisor Reports

Job Log

Date/Time	Chart #	Activity Code	Pump Rate	Cum Vol	Pump	Pressure (psig)	Comments
08/02/2013 18:30		Arrive at Location from Service Center					With All Equipement and Materials.
08/02/2013 18:30		Casing on Bottom					
08/02/2013 18:35		Assessment Of Location Safety Meeting					
08/02/2013 18:40		Pre-Rig Up Safety Meeting					Covered rig up JSA with crew.
08/02/2013 18:45		Circulate Well					
08/02/2013 18:45		Rig-Up Equipment					
08/02/2013 19:15		Rig-Up Completed					
08/02/2013 19:30		Pre-Job Safety Meeting					With customer rep, and rig crew.
08/02/2013 20:11		Start Job					
08/02/2013 20:12		Test Lines					@ 2500
08/02/2013 20:16		Pump Spacer 1	4	10		80.0	Fresh water.
08/02/2013 20:18		Pump Spacer 2	4	12		100.0	Mud Flush
08/02/2013 20:24		Pump Spacer 1	4	10		100.0	Fresh Water
08/02/2013 20:26		Pump Cement	5	64		150.0	235 sks @ 14.2 ppg 1.54 yield, 7.67 gal/sk
08/02/2013 20:42		Spacer Returns to Surface					@62.5 bbls into cement 32 bbls to the pit
08/02/2013 20:43		Shutdown					
08/02/2013 20:45		Drop Top Plug					Pre-loaded in plug container, verified by customer rep.
08/02/2013 20:48		Clean Lines					Washed up on top of plug.
08/02/2013 20:54		Pump Displacement	4	44.5		180.0	Fresh Water
08/02/2013 21:01		Cement Returns to Surface					@ 30.5 bbls into displacement 14 bbls to the pit
08/02/2013 21:13		Check Floats					Floats good
08/02/2013 21:29		End Job					Thanks Aaron Smith and Crew.
08/02/2013 22:19		Comment					Did not bump plug, plug was loaded and verified by driller, plug had left the plug container, verified, by Service Supervisor and Customer Rep.

The Road to Excellence Starts with Safety

Sold To #: 300466		Ship To #: 3013883		Quote #:		Sales Order #: 900640698						
Customer: ANADARKO PETROLEUM CORP - EBUS				Customer Rep: Hine, George								
Well Name: Harris Federal			Well #: 36N-E18HZ			API/UWI #: 05-123-37762						
Field: WATTENBURG		City (SAP): PLATTEVILLE		County/Parish: Weld			State: Colorado					
Lat: N 40.205 deg. OR N 40 deg. 12 min. 17.525 secs.				Long: W 104.817 deg. OR W -105 deg. 10 min. 58.357 secs.								
Job Purpose: Cement Surface Casing												
Well Type: Development Well				Job Type: Cement Surface Casing								
Sales Person: PLIENESS, RYAN				Srvc Supervisor: SMITH, AARON			MBU ID Emp #: 518187					
Job Personnel												
HES Emp Name		Exp Hrs	Emp #	HES Emp Name		Exp Hrs	Emp #	HES Emp Name		Exp Hrs	Emp #	
REYNOLDS, SCOTT Arthur		4.0	522540	SMITH, AARON David		4.0	518187	TORREY, SPENCER Kenneth		4.0	549837	
Equipment												
HES Unit #	<i>Distance-1 way</i>	HES Unit #	<i>Distance-1 way</i>	HES Unit #	<i>Distance-1 way</i>	HES Unit #	<i>Distance-1 way</i>	HES Unit #	<i>Distance-1 way</i>			
10982754C	15 mile	11398490	15 mile	11527037	15 mile	12010173	15 mile					
Job Hours												
Date	<i>On Location Hours</i>	Operating Hours	Date	<i>On Location Hours</i>	Operating Hours	Date	<i>On Location Hours</i>	Operating Hours				
TOTAL			<i>Total is the sum of each column separately</i>									
Job					Job Times							
Formation Name							Date	Time	Time Zone			
Formation Depth (MD)		Top	Bottom		Called Out		02 - Aug - 2013	14:30	MST			
Form Type		BHST			On Location		02 - Aug - 2013	18:30	MST			
Job depth MD		612. ft	Job Depth TVD		617. ft	Job Started		02 - Aug - 2013	20:11	MST		
Water Depth		Wk Ht Above Floor			5. ft	Job Completed		02 - Aug - 2013	21:29	MST		
Perforation Depth (MD)		<i>From</i>	<i>To</i>		Departed Loc		02 - Aug - 2013	22:30	MST			
Well Data												
Description	New / Used	Max pressure psig	Size in	ID in	Weight lbm/ft	Thread	Grade	Top MD ft	Bottom MD ft	Top TVD ft	Bottom TVD ft	
13 1/2" Open Hole Section				13.5				.	617.			
9 5/8" Surface Casing	Unknown		9.625	8.921	36.		J-55	.	612.			
Fluid Data												
Stage/Plug #: 1												
Fluid #	Stage Type	Fluid Name				Qty	Qty uom	Mixing Density lbm/gal	Yield ft3/sk	Mix Fluid Gal/sk	Rate bbl/min	Total Mix Fluid Gal/sk

1	Fresh Water Spacer		10.00	bbl	8.33	.0	.0	4.0	
2	SwiftCem B2	SWIFTCEM (TM) SYSTEM (452990)	235.0	sacks	14.2	1.53	7.63	5.0	7.63
	7.63 Gal	FRESH WATER							
3	Mud Flush		12.00	bbl	8.4	.0	.0	4.0	
	42 gal/bbl	MUD FLUSH III - SBM (528788)							
	3.33 lbm/bbl	MUD FLUSH III, 40 LB SACK (101633304)							
	42 gal/bbl	MUD FLUSH III - SBM (528788)							
Calculated Values		Pressures			Volumes				
Displacement		Shut In: Instant		Lost Returns		Cement Slurry		Pad	
Top Of Cement		5 Min		Cement Returns		Actual Displacement		Treatment	
Frac Gradient		15 Min		Spacers		Load and Breakdown		Total Job	
Rates									
Circulating		Mixing		Displacement		Avg. Job			
Cement Left In Pipe	Amount	42 ft	Reason	Shoe Joint					
Frac Ring # 1 @	ID	Frac ring # 2 @	ID	Frac Ring # 3 @	ID	Frac Ring # 4 @	ID		
The Information Stated Herein Is Correct				Customer Representative Signature					

