

Synergy Resources

Well Name: **SRC Eberle 14-32" %CHZM**

Surface Location: SRC Eberle 14-32CHZM Pad Sec.32-T1N-R66W
North American Datum 1983 , US State Plane 1983 , Colorado Northern Zone

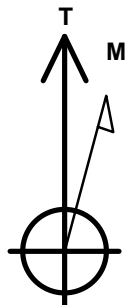
Ground Elevation: 5034.0

+N/-S	+E/-W	Northing	Easting	Latitude	Longitude	Slot
0.0	0.0	1245146.32	3197647.68	40.004154	-104.794452	

RKB - 12' WELL @ 5046.0ft (RKB - 12')

WELLBORE TARGET DETAILS

Name	TVD	+N/-S	+E/-W	Shape Point
SHL 1355'FSL & 823'FEL, Sec.32	1.0	0.0	0.0	Point
BHL 475'FSL & 2195'FEL, Sec.31	7642.0	-885.0	-6659.0	Point



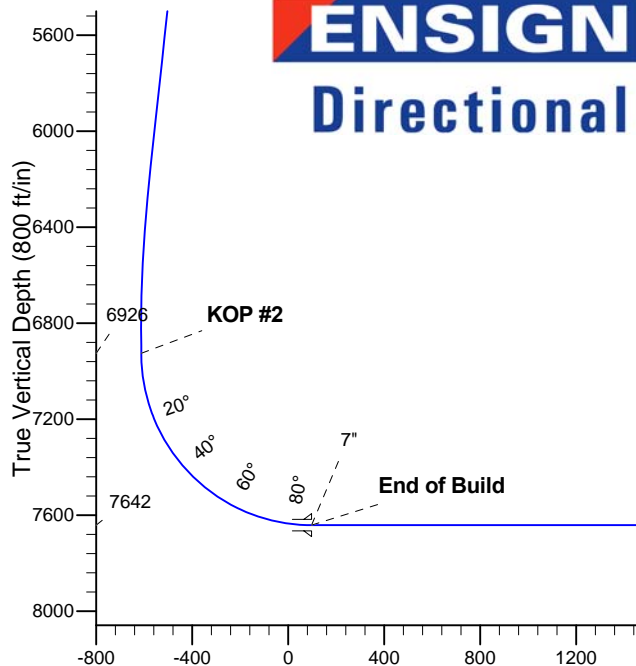
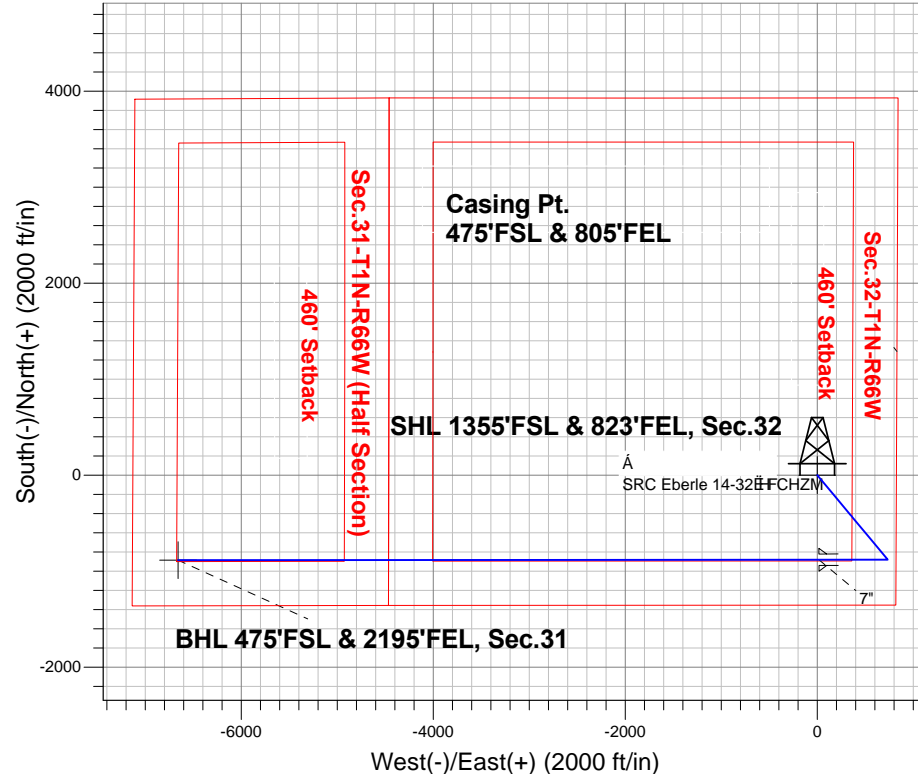
Azimuths to True North
Magnetic North: 8.51°

Magnetic Field
Strength: 52654.2snT
Dip Angle: 66.64°
Date: 12/17/2013
Model: IGRF2010

SRC Eberle 14-32CHZM Pad Sec.32-T1N-R66W
SRC Eberle 14-32" %CHZM
Plan #G(1-2-11)
14:08, RKB - 12' @ 5046.0ft (RKB - 12')

ANNOTATIONS

TVD	MD	Annotation
200.0	200.0	KOP #1
6925.8	7033.4	KOP #2
7642.0	8158.4	End of Build



SECTION DETAILS

Sec	MD	Inc	Azi	TVD	+N/-S	+E/-W	DLeg	TFace	VSec	Target
1	0.0	0.00	0.00	0.0	0.0	0.0	0.00	0.00	0.0	
2	200.0	0.00	0.00	200.0	0.0	0.0	0.00	0.00	0.0	
3	1326.7	11.27	140.17	1319.4	-84.8	70.7	1.00	140.17	-58.9	
4	6344.2	11.27	140.17	6240.3	-837.6	698.6	0.00	0.00	-582.2	
5	6907.6	0.00	0.00	6800.0	-880.0	734.0	2.00	180.00	-611.7	
6	7033.4	0.00	0.00	6925.8	-880.0	734.0	0.00	0.00	-611.7	
7	8158.4	90.00	269.96	7642.0	-880.5	17.8	8.00	269.96	98.4	
8	14835.2	90.00	269.96	7642.0	-885.0	-6659.0	0.00	0.00	6717.6	BHL 475'FSL & 2195'FEL, Sec.31

BHL 475'FSL & 2195'FEL, Sec.31

Vertical Section at 262.43° (800 ft/in)



Synergy Resources

SEC.32-T1N-R66W

SRC Eberle 14-32-31CHZM Pad Sec.32-T1N-R66W

SRC Eberle 14-32-31CHZM

Wellbore #1

Plan: Plan #2 (1-2-14)

Standard Planning Report

02 January, 2014

Database:	Landmark	Local Co-ordinate Reference:	Well SRC Eberle 14-32-31CHZM
Company:	Synergy Resources	TVD Reference:	WELL @ 5046.0ft (RKB - 12')
Project:	SEC.32-T1N-R66W	MD Reference:	WELL @ 5046.0ft (RKB - 12')
Site:	SRC Eberle 14-32-31CHZM Pad Sec.32-T1N-R66W	North Reference:	True
Well:	SRC Eberle 14-32-31CHZM	Survey Calculation Method:	Minimum Curvature
Wellbore:	Wellbore #1		
Design:	Plan #2 (1-2-14)		

Project	SEC.32-T1N-R66W, Weld County, Colorado		
Map System:	US State Plane 1983	System Datum:	Mean Sea Level
Geo Datum:	North American Datum 1983		Using Well Reference Point
Map Zone:	Colorado Northern Zone		Using geodetic scale factor

Site						SRC Eberle 14-32-31CHZM Pad Sec.32-T1N-R66W											
Site Position:						Northing:			1,245,145.79ft			Latitude:			40.004155		
From:			Lat/Long			Easting:			3,197,534.23ft			Longitude:			-104.794857		
Position Uncertainty:			0.0 ft			Slot Radius:			"			Grid Convergence:			0.46 °		

Well	SRC Eberle 14-32-31CHZM					
Well Position	+N-S	-0.4 ft	Northing:	1,245,146.32 ft	Latitude:	40.004154
	+E-W	113.5 ft	Easting:	3,197,647.68 ft	Longitude:	-104.794452
Position Uncertainty		0.0 ft	Wellhead Elevation:	ft	Ground Level:	5,034.0 ft

Wellbore	Wellbore #1				
Magnetics	Model Name	Sample Date	Declination (°)	Dip Angle (°)	Field Strength (nT)
	IGRF2010	12/17/2013	8.51	66.64	52,654

Design	Plan #2 (1-2-14)			
Audit Notes:				
Version:	Phase:	PROTOTYPE	Tie On Depth:	0.0
Vertical Section:	Depth From (TVD) (ft)	+N/-S (ft)	+E/-W (ft)	Direction (°)
	0.0	0.0	0.0	262.43

Plan Sections										
Measured Depth (ft)	Inclination (°)	Azimuth (°)	Vertical Depth (ft)	+N/-S (ft)	+E/-W (ft)	Dogleg Rate (°/100ft)	Build Rate (°/100ft)	Turn Rate (°/100ft)	TFO (°)	Target
0.0	0.00	0.00	0.0	0.0	0.0	0.00	0.00	0.00	0.00	
200.0	0.00	0.00	200.0	0.0	0.0	0.00	0.00	0.00	0.00	
1,326.7	11.27	140.17	1,319.4	-84.8	70.7	1.00	1.00	0.00	140.17	
6,344.2	11.27	140.17	6,240.3	-837.6	698.6	0.00	0.00	0.00	0.00	
6,907.6	0.00	0.00	6,800.0	-880.0	734.0	2.00	-2.00	0.00	180.00	
7,033.4	0.00	0.00	6,925.8	-880.0	734.0	0.00	0.00	0.00	0.00	
8,158.4	90.00	269.96	7,642.0	-880.5	17.8	8.00	8.00	0.00	269.96	
14,835.2	90.00	269.96	7,642.0	-885.0	-6,659.0	0.00	0.00	0.00	0.00	BHL 475'FSL & 219°

Database:	Landmark	Local Co-ordinate Reference:	Well SRC Eberle 14-32-31CHZM
Company:	Synergy Resources	TVD Reference:	WELL @ 5046.0ft (RKB - 12')
Project:	SEC.32-T1N-R66W	MD Reference:	WELL @ 5046.0ft (RKB - 12')
Site:	SRC Eberle 14-32-31CHZM Pad Sec.32-T1N-R66W	North Reference:	True
Well:	SRC Eberle 14-32-31CHZM	Survey Calculation Method:	Minimum Curvature
Wellbore:	Wellbore #1		
Design:	Plan #2 (1-2-14)		

Planned Survey									
Measured Depth (ft)	Inclination (°)	Azimuth (°)	Vertical Depth (ft)	+N/-S (ft)	+E/-W (ft)	Vertical Section (ft)	Dogleg Rate (°/100ft)	Build Rate (°/100ft)	Turn Rate (°/100ft)
0.0	0.00	0.00	0.0	0.0	0.0	0.0	0.00	0.00	0.00
100.0	0.00	0.00	100.0	0.0	0.0	0.0	0.00	0.00	0.00
200.0	0.00	0.00	200.0	0.0	0.0	0.0	0.00	0.00	0.00
KOP #1									
300.0	1.00	140.17	300.0	-0.7	0.6	-0.5	1.00	1.00	0.00
400.0	2.00	140.17	400.0	-2.7	2.2	-1.9	1.00	1.00	0.00
500.0	3.00	140.17	499.9	-6.0	5.0	-4.2	1.00	1.00	0.00
600.0	4.00	140.17	599.7	-10.7	8.9	-7.4	1.00	1.00	0.00
700.0	5.00	140.17	699.4	-16.7	14.0	-11.6	1.00	1.00	0.00
800.0	6.00	140.17	798.9	-24.1	20.1	-16.8	1.00	1.00	0.00
900.0	7.00	140.17	898.3	-32.8	27.4	-22.8	1.00	1.00	0.00
1,000.0	8.00	140.17	997.4	-42.8	35.7	-29.8	1.00	1.00	0.00
1,100.0	9.00	140.17	1,096.3	-54.2	45.2	-37.7	1.00	1.00	0.00
1,200.0	10.00	140.17	1,194.9	-66.8	55.8	-46.5	1.00	1.00	0.00
1,300.0	11.00	140.17	1,293.3	-80.8	67.4	-56.2	1.00	1.00	0.00
1,326.7	11.27	140.17	1,319.4	-84.8	70.7	-58.9	1.00	1.00	0.00
1,400.0	11.27	140.17	1,391.3	-95.8	79.9	-66.6	0.00	0.00	0.00
1,500.0	11.27	140.17	1,489.4	-110.8	92.4	-77.0	0.00	0.00	0.00
1,600.0	11.27	140.17	1,587.5	-125.8	104.9	-87.4	0.00	0.00	0.00
1,700.0	11.27	140.17	1,685.6	-140.8	117.4	-97.9	0.00	0.00	0.00
1,800.0	11.27	140.17	1,783.6	-155.8	130.0	-108.3	0.00	0.00	0.00
1,900.0	11.27	140.17	1,881.7	-170.8	142.5	-118.7	0.00	0.00	0.00
2,000.0	11.27	140.17	1,979.8	-185.8	155.0	-129.2	0.00	0.00	0.00
2,100.0	11.27	140.17	2,077.9	-200.8	167.5	-139.6	0.00	0.00	0.00
2,200.0	11.27	140.17	2,175.9	-215.8	180.0	-150.0	0.00	0.00	0.00
2,300.0	11.27	140.17	2,274.0	-230.8	192.5	-160.4	0.00	0.00	0.00
2,400.0	11.27	140.17	2,372.1	-245.8	205.0	-170.9	0.00	0.00	0.00
2,500.0	11.27	140.17	2,470.1	-260.8	217.6	-181.3	0.00	0.00	0.00
2,600.0	11.27	140.17	2,568.2	-275.8	230.1	-191.7	0.00	0.00	0.00
2,700.0	11.27	140.17	2,666.3	-290.8	242.6	-202.2	0.00	0.00	0.00
2,800.0	11.27	140.17	2,764.4	-305.8	255.1	-212.6	0.00	0.00	0.00
2,900.0	11.27	140.17	2,862.4	-320.8	267.6	-223.0	0.00	0.00	0.00
3,000.0	11.27	140.17	2,960.5	-335.9	280.1	-233.4	0.00	0.00	0.00
3,100.0	11.27	140.17	3,058.6	-350.9	292.6	-243.9	0.00	0.00	0.00
3,200.0	11.27	140.17	3,156.7	-365.9	305.2	-254.3	0.00	0.00	0.00
3,300.0	11.27	140.17	3,254.7	-380.9	317.7	-264.7	0.00	0.00	0.00
3,400.0	11.27	140.17	3,352.8	-395.9	330.2	-275.2	0.00	0.00	0.00
3,500.0	11.27	140.17	3,450.9	-410.9	342.7	-285.6	0.00	0.00	0.00
3,600.0	11.27	140.17	3,548.9	-425.9	355.2	-296.0	0.00	0.00	0.00
3,700.0	11.27	140.17	3,647.0	-440.9	367.7	-306.4	0.00	0.00	0.00
3,800.0	11.27	140.17	3,745.1	-455.9	380.2	-316.9	0.00	0.00	0.00
3,900.0	11.27	140.17	3,843.2	-470.9	392.8	-327.3	0.00	0.00	0.00
4,000.0	11.27	140.17	3,941.2	-485.9	405.3	-337.7	0.00	0.00	0.00
4,100.0	11.27	140.17	4,039.3	-500.9	417.8	-348.2	0.00	0.00	0.00
4,200.0	11.27	140.17	4,137.4	-515.9	430.3	-358.6	0.00	0.00	0.00
4,300.0	11.27	140.17	4,235.5	-530.9	442.8	-369.0	0.00	0.00	0.00
4,400.0	11.27	140.17	4,333.5	-545.9	455.3	-379.4	0.00	0.00	0.00
4,500.0	11.27	140.17	4,431.6	-560.9	467.8	-389.9	0.00	0.00	0.00
4,600.0	11.27	140.17	4,529.7	-575.9	480.4	-400.3	0.00	0.00	0.00
4,700.0	11.27	140.17	4,627.7	-590.9	492.9	-410.7	0.00	0.00	0.00
4,800.0	11.27	140.17	4,725.8	-605.9	505.4	-421.2	0.00	0.00	0.00
4,900.0	11.27	140.17	4,823.9	-620.9	517.9	-431.6	0.00	0.00	0.00
5,000.0	11.27	140.17	4,922.0	-635.9	530.4	-442.0	0.00	0.00	0.00

Database:	Landmark	Local Co-ordinate Reference:	Well SRC Eberle 14-32-31CHZM
Company:	Synergy Resources	TVD Reference:	WELL @ 5046.0ft (RKB - 12')
Project:	SEC.32-T1N-R66W	MD Reference:	WELL @ 5046.0ft (RKB - 12')
Site:	SRC Eberle 14-32-31CHZM Pad Sec.32-T1N-R66W	North Reference:	True
Well:	SRC Eberle 14-32-31CHZM	Survey Calculation Method:	Minimum Curvature
Wellbore:	Wellbore #1		
Design:	Plan #2 (1-2-14)		

Planned Survey									
Measured Depth (ft)	Inclination (°)	Azimuth (°)	Vertical Depth (ft)	+N/-S (ft)	+E/-W (ft)	Vertical Section (ft)	Dogleg Rate (°/100ft)	Build Rate (°/100ft)	Turn Rate (°/100ft)
5,100.0	11.27	140.17	5,020.0	-650.9	542.9	-452.4	0.00	0.00	0.00
5,200.0	11.27	140.17	5,118.1	-665.9	555.4	-462.9	0.00	0.00	0.00
5,300.0	11.27	140.17	5,216.2	-680.9	568.0	-473.3	0.00	0.00	0.00
5,400.0	11.27	140.17	5,314.3	-695.9	580.5	-483.7	0.00	0.00	0.00
5,500.0	11.27	140.17	5,412.3	-710.9	593.0	-494.2	0.00	0.00	0.00
5,600.0	11.27	140.17	5,510.4	-725.9	605.5	-504.6	0.00	0.00	0.00
5,700.0	11.27	140.17	5,608.5	-740.9	618.0	-515.0	0.00	0.00	0.00
5,800.0	11.27	140.17	5,706.5	-755.9	630.5	-525.4	0.00	0.00	0.00
5,900.0	11.27	140.17	5,804.6	-771.0	643.0	-535.9	0.00	0.00	0.00
6,000.0	11.27	140.17	5,902.7	-786.0	655.6	-546.3	0.00	0.00	0.00
6,100.0	11.27	140.17	6,000.8	-801.0	668.1	-556.7	0.00	0.00	0.00
6,200.0	11.27	140.17	6,098.8	-816.0	680.6	-567.2	0.00	0.00	0.00
6,300.0	11.27	140.17	6,196.9	-831.0	693.1	-577.6	0.00	0.00	0.00
6,344.2	11.27	140.17	6,240.3	-837.6	698.6	-582.2	0.00	0.00	0.00
6,400.0	10.15	140.17	6,295.1	-845.6	705.3	-587.7	2.00	-2.00	0.00
6,500.0	8.15	140.17	6,393.8	-857.8	715.5	-596.2	2.00	-2.00	0.00
6,600.0	6.15	140.17	6,493.0	-867.3	723.4	-602.9	2.00	-2.00	0.00
6,700.0	4.15	140.17	6,592.6	-874.2	729.2	-607.7	2.00	-2.00	0.00
6,800.0	2.15	140.17	6,692.5	-878.4	732.7	-610.6	2.00	-2.00	0.00
6,900.0	0.15	140.17	6,792.4	-880.0	734.0	-611.7	2.00	-2.00	0.00
6,907.6	0.00	0.00	6,800.0	-880.0	734.0	-611.7	2.00	-2.00	0.00
7,000.0	0.00	0.00	6,892.4	-880.0	734.0	-611.7	0.00	0.00	0.00
7,033.4	0.00	0.00	6,925.8	-880.0	734.0	-611.7	0.00	0.00	0.00
KOP #2									
7,100.0	5.33	269.96	6,992.3	-880.0	730.9	-608.6	8.00	8.00	0.00
7,200.0	13.33	269.96	7,090.9	-880.0	714.7	-592.5	8.00	8.00	0.00
7,300.0	21.33	269.96	7,186.3	-880.0	684.9	-563.0	8.00	8.00	0.00
7,400.0	29.33	269.96	7,276.6	-880.1	642.2	-520.6	8.00	8.00	0.00
7,500.0	37.33	269.96	7,360.1	-880.1	587.3	-466.2	8.00	8.00	0.00
7,600.0	45.33	269.96	7,435.1	-880.1	521.3	-400.8	8.00	8.00	0.00
7,700.0	53.33	269.96	7,500.3	-880.2	445.5	-325.7	8.00	8.00	0.00
7,800.0	61.33	269.96	7,554.2	-880.3	361.4	-242.3	8.00	8.00	0.00
7,900.0	69.33	269.96	7,595.9	-880.3	270.6	-152.3	8.00	8.00	0.00
8,000.0	77.33	269.96	7,624.6	-880.4	174.9	-57.4	8.00	8.00	0.00
8,100.0	85.33	269.96	7,639.6	-880.4	76.1	40.6	8.00	8.00	0.00
8,158.4	90.00	269.96	7,642.0	-880.5	17.8	98.4	8.00	8.00	0.00
End of Build - 7"									
8,200.0	90.00	269.96	7,642.0	-880.5	-23.8	139.6	0.00	0.00	0.00
8,300.0	90.00	269.96	7,642.0	-880.6	-123.8	238.8	0.00	0.00	0.00
8,400.0	90.00	269.96	7,642.0	-880.7	-223.8	337.9	0.00	0.00	0.00
8,500.0	90.00	269.96	7,642.0	-880.7	-323.8	437.0	0.00	0.00	0.00
8,600.0	90.00	269.96	7,642.0	-880.8	-423.8	536.2	0.00	0.00	0.00
8,700.0	90.00	269.96	7,642.0	-880.9	-523.8	635.3	0.00	0.00	0.00
8,800.0	90.00	269.96	7,642.0	-880.9	-623.8	734.5	0.00	0.00	0.00
8,900.0	90.00	269.96	7,642.0	-881.0	-723.8	833.6	0.00	0.00	0.00
9,000.0	90.00	269.96	7,642.0	-881.1	-823.8	932.7	0.00	0.00	0.00
9,100.0	90.00	269.96	7,642.0	-881.1	-923.8	1,031.9	0.00	0.00	0.00
9,200.0	90.00	269.96	7,642.0	-881.2	-1,023.8	1,131.0	0.00	0.00	0.00
9,300.0	90.00	269.96	7,642.0	-881.3	-1,123.8	1,230.1	0.00	0.00	0.00
9,400.0	90.00	269.96	7,642.0	-881.3	-1,223.8	1,329.3	0.00	0.00	0.00
9,500.0	90.00	269.96	7,642.0	-881.4	-1,323.8	1,428.4	0.00	0.00	0.00
9,600.0	90.00	269.96	7,642.0	-881.5	-1,423.8	1,527.6	0.00	0.00	0.00
9,700.0	90.00	269.96	7,642.0	-881.5	-1,523.8	1,626.7	0.00	0.00	0.00

Database:	Landmark	Local Co-ordinate Reference:	Well SRC Eberle 14-32-31CHZM
Company:	Synergy Resources	TVD Reference:	WELL @ 5046.0ft (RKB - 12')
Project:	SEC.32-T1N-R66W	MD Reference:	WELL @ 5046.0ft (RKB - 12')
Site:	SRC Eberle 14-32-31CHZM Pad	North Reference:	True
	Sec.32-T1N-R66W		
Well:	SRC Eberle 14-32-31CHZM	Survey Calculation Method:	Minimum Curvature
Wellbore:	Wellbore #1		
Design:	Plan #2 (1-2-14)		

Planned Survey									
Measured Depth (ft)	Inclination (°)	Azimuth (°)	Vertical Depth (ft)	+N/-S (ft)	+E/-W (ft)	Vertical Section (ft)	Dogleg Rate (°/100ft)	Build Rate (°/100ft)	Turn Rate (°/100ft)
9,800.0	90.00	269.96	7,642.0	-881.6	-1,623.8	1,725.8	0.00	0.00	0.00
9,900.0	90.00	269.96	7,642.0	-881.7	-1,723.8	1,825.0	0.00	0.00	0.00
10,000.0	90.00	269.96	7,642.0	-881.7	-1,823.8	1,924.1	0.00	0.00	0.00
10,100.0	90.00	269.96	7,642.0	-881.8	-1,923.8	2,023.2	0.00	0.00	0.00
10,200.0	90.00	269.96	7,642.0	-881.9	-2,023.8	2,122.4	0.00	0.00	0.00
10,300.0	90.00	269.96	7,642.0	-881.9	-2,123.8	2,221.5	0.00	0.00	0.00
10,400.0	90.00	269.96	7,642.0	-882.0	-2,223.8	2,320.6	0.00	0.00	0.00
10,500.0	90.00	269.96	7,642.0	-882.1	-2,323.8	2,419.8	0.00	0.00	0.00
10,600.0	90.00	269.96	7,642.0	-882.2	-2,423.8	2,518.9	0.00	0.00	0.00
10,700.0	90.00	269.96	7,642.0	-882.2	-2,523.8	2,618.1	0.00	0.00	0.00
10,800.0	90.00	269.96	7,642.0	-882.3	-2,623.8	2,717.2	0.00	0.00	0.00
10,900.0	90.00	269.96	7,642.0	-882.4	-2,723.8	2,816.3	0.00	0.00	0.00
11,000.0	90.00	269.96	7,642.0	-882.4	-2,823.8	2,915.5	0.00	0.00	0.00
11,100.0	90.00	269.96	7,642.0	-882.5	-2,923.8	3,014.6	0.00	0.00	0.00
11,200.0	90.00	269.96	7,642.0	-882.6	-3,023.8	3,113.7	0.00	0.00	0.00
11,300.0	90.00	269.96	7,642.0	-882.6	-3,123.8	3,212.9	0.00	0.00	0.00
11,400.0	90.00	269.96	7,642.0	-882.7	-3,223.8	3,312.0	0.00	0.00	0.00
11,500.0	90.00	269.96	7,642.0	-882.8	-3,323.8	3,411.2	0.00	0.00	0.00
11,600.0	90.00	269.96	7,642.0	-882.8	-3,423.8	3,510.3	0.00	0.00	0.00
11,700.0	90.00	269.96	7,642.0	-882.9	-3,523.8	3,609.4	0.00	0.00	0.00
11,800.0	90.00	269.96	7,642.0	-883.0	-3,623.8	3,708.6	0.00	0.00	0.00
11,900.0	90.00	269.96	7,642.0	-883.0	-3,723.8	3,807.7	0.00	0.00	0.00
12,000.0	90.00	269.96	7,642.0	-883.1	-3,823.8	3,906.8	0.00	0.00	0.00
12,100.0	90.00	269.96	7,642.0	-883.2	-3,923.8	4,006.0	0.00	0.00	0.00
12,200.0	90.00	269.96	7,642.0	-883.2	-4,023.8	4,105.1	0.00	0.00	0.00
12,300.0	90.00	269.96	7,642.0	-883.3	-4,123.8	4,204.3	0.00	0.00	0.00
12,400.0	90.00	269.96	7,642.0	-883.4	-4,223.8	4,303.4	0.00	0.00	0.00
12,500.0	90.00	269.96	7,642.0	-883.4	-4,323.8	4,402.5	0.00	0.00	0.00
12,600.0	90.00	269.96	7,642.0	-883.5	-4,423.8	4,501.7	0.00	0.00	0.00
12,700.0	90.00	269.96	7,642.0	-883.6	-4,523.8	4,600.8	0.00	0.00	0.00
12,800.0	90.00	269.96	7,642.0	-883.7	-4,623.8	4,699.9	0.00	0.00	0.00
12,900.0	90.00	269.96	7,642.0	-883.7	-4,723.8	4,799.1	0.00	0.00	0.00
13,000.0	90.00	269.96	7,642.0	-883.8	-4,823.8	4,898.2	0.00	0.00	0.00
13,100.0	90.00	269.96	7,642.0	-883.9	-4,923.8	4,997.4	0.00	0.00	0.00
13,200.0	90.00	269.96	7,642.0	-883.9	-5,023.8	5,096.5	0.00	0.00	0.00
13,300.0	90.00	269.96	7,642.0	-884.0	-5,123.8	5,195.6	0.00	0.00	0.00
13,400.0	90.00	269.96	7,642.0	-884.1	-5,223.8	5,294.8	0.00	0.00	0.00
13,500.0	90.00	269.96	7,642.0	-884.1	-5,323.8	5,393.9	0.00	0.00	0.00
13,600.0	90.00	269.96	7,642.0	-884.2	-5,423.8	5,493.0	0.00	0.00	0.00
13,700.0	90.00	269.96	7,642.0	-884.3	-5,523.8	5,592.2	0.00	0.00	0.00
13,800.0	90.00	269.96	7,642.0	-884.3	-5,623.8	5,691.3	0.00	0.00	0.00
13,900.0	90.00	269.96	7,642.0	-884.4	-5,723.8	5,790.5	0.00	0.00	0.00
14,000.0	90.00	269.96	7,642.0	-884.5	-5,823.8	5,889.6	0.00	0.00	0.00
14,100.0	90.00	269.96	7,642.0	-884.5	-5,923.8	5,988.7	0.00	0.00	0.00
14,200.0	90.00	269.96	7,642.0	-884.6	-6,023.8	6,087.9	0.00	0.00	0.00
14,300.0	90.00	269.96	7,642.0	-884.7	-6,123.8	6,187.0	0.00	0.00	0.00
14,400.0	90.00	269.96	7,642.0	-884.7	-6,223.8	6,286.1	0.00	0.00	0.00
14,500.0	90.00	269.96	7,642.0	-884.8	-6,323.8	6,385.3	0.00	0.00	0.00
14,600.0	90.00	269.96	7,642.0	-884.9	-6,423.8	6,484.4	0.00	0.00	0.00
14,700.0	90.00	269.96	7,642.0	-884.9	-6,523.8	6,583.6	0.00	0.00	0.00
14,800.0	90.00	269.96	7,642.0	-885.0	-6,623.8	6,682.7	0.00	0.00	0.00
14,835.2	90.00	269.96	7,642.0	-885.0	-6,659.0	6,717.6	0.00	0.00	0.00

Database:	Landmark	Local Co-ordinate Reference:	Well SRC Eberle 14-32-31CHZM
Company:	Synergy Resources	TVD Reference:	WELL @ 5046.0ft (RKB - 12')
Project:	SEC.32-T1N-R66W	MD Reference:	WELL @ 5046.0ft (RKB - 12')
Site:	SRC Eberle 14-32-31CHZM Pad Sec.32-T1N-R66W	North Reference:	True
Well:	SRC Eberle 14-32-31CHZM	Survey Calculation Method:	Minimum Curvature
Wellbore:	Wellbore #1		
Design:	Plan #2 (1-2-14)		

Targets

Target Name

- hit/miss target	Dip Angle	Dip Dir.	TVD	+N/-S	+E/-W	Northing	Easting	Latitude	Longitude
- Shape	(°)	(°)	(ft)	(ft)	(ft)	(ft)	(ft)		
BHL 475'FSL & 2195'I - plan hits target center - Point	0.00	0.00	7,642.0	-885.0	-6,659.0	1,244,208.35	3,190,996.13	40.001722	-104.818221
SHL 1355'FSL & 823'I - plan hits target center - Point	0.00	0.00	1.0	0.0	0.0	1,245,146.33	3,197,647.68	40.004154	-104.794452

Casing Points

Measured Depth	Vertical Depth	Name	Casing Diameter	Hole Diameter
(ft)	(ft)		(")	(")
8,158.4	7,642.0	7"	7	7-1/2

Plan Annotations

Measured Depth	Vertical Depth	Local Coordinates		Comment
(ft)	(ft)	+N/-S (ft)	+E/-W (ft)	
200.0	200.0	0.0	0.0	KOP #1
7,033.4	6,925.8	-880.0	734.0	KOP #2
8,158.4	7,642.0	-880.5	17.8	End of Build



Synergy Resources

SEC.32-T1N-R66W

SRC Eberle 14-32-31CHZM Pad Sec.32-T1N-R66W

SRC Eberle 14-32-31CHZM

Wellbore #1

Plan #2 (1-2-14)

Anticollision Report

02 January, 2014

Company:	Synergy Resources	Local Co-ordinate Reference:	Well SRC Eberle 14-32-31CHZM
Project:	SEC.32-T1N-R66W	TVD Reference:	WELL @ 5046.0ft (RKB - 12')
Reference Site:	SRC Eberle 14-32-31CHZM Pad Sec.32-T1N-R66W	MD Reference:	WELL @ 5046.0ft (RKB - 12')
Site Error:	0.0ft	North Reference:	True
Reference Well:	SRC Eberle 14-32-31CHZM	Survey Calculation Method:	Minimum Curvature
Well Error:	0.0ft	Output errors are at	2.00 sigma
Reference Wellbore	Wellbore #1	Database:	Landmark
Reference Design:	Plan #2 (1-2-14)	Offset TVD Reference:	Offset Datum

Reference	Plan #2 (1-2-14)		
Filter type:	NO GLOBAL FILTER: Using user defined selection & filtering criteria		
Interpolation Method:	MD Interval 100.0ft	Error Model:	ISCWSA
Depth Range:	Unlimited	Scan Method:	Closest Approach 3D
Results Limited by:	Maximum center-center distance of 10,000.0ft	Error Surface:	Elliptical Conic
Warning Levels Evaluated at:	2.00 Sigma		

Survey Tool Program	Date 1/2/2014			
From (ft)	To (ft)	Survey (Wellbore)	Tool Name	Description
0.0	14,835.1	Plan #2 (1-2-14) (Wellbore #1)	MWD	MWD - Standard

Summary						
Site Name	Reference Measured Depth (ft)	Offset Measured Depth (ft)	Distance Between Centres (ft)	Distance Between Ellipses (ft)	Separation Factor	Warning
Offset Well - Wellbore - Design						
SRC Eberle 14-32-31CHZM Pad Sec.32-T1N-R66W						
SRC Eberle 13-32CHZ - Wellbore #1 - Plan #1 (12-26-13)	200.0	197.0	68.1	67.4	101.979	CC, ES
SRC Eberle 13-32CHZ - Wellbore #1 - Plan #1 (12-26-13)	12,400.0	12,146.0	1,372.8	1,116.3	5.352	SF
SRC Eberle 13-32NHZ - Wellbore #1 - Plan #1 (12-26-13)	200.0	198.0	45.4	44.7	67.759	CC, ES
SRC Eberle 13-32NHZ - Wellbore #1 - Plan #1 (12-26-13)	12,500.0	12,022.3	1,731.5	1,473.2	6.704	SF
SRC Eberle 14-32-31NHZM - Wellbore #1 - Plan #1 (12-26-13)	200.0	199.0	24.7	24.0	36.686	CC
SRC Eberle 14-32-31NHZM - Wellbore #1 - Plan #1 (12-26-13)	14,835.2	14,645.7	373.0	9.1	1.025	Level 2, ES, SF
SRC Eberle B-32CHZ - Wellbore #1 - Plan #1 (12-26-13)	200.0	196.0	90.8	90.1	136.430	CC, ES
SRC Eberle B-32CHZ - Wellbore #1 - Plan #1 (12-26-13)	12,200.0	12,132.0	676.4	425.4	2.695	SF
SRC Eberle B-32NHZ - Wellbore #1 - Plan #1 (12-26-13)	200.0	195.0	113.5	112.8	171.116	CC, ES
SRC Eberle B-32NHZ - Wellbore #1 - Plan #1 (12-26-13)	12,300.0	11,981.6	1,034.6	783.6	4.122	SF

Offset Design		SRC Eberle 14-32-31CHZM Pad Sec.32-T1N-R66W - SRC Eberle 13-32CHZ - Wellbore #1 - Plan #1 (1										Offset Site Error:		0.0 ft		
Survey Program: 0-MWD														Offset Well Error:		0.0 ft
Reference		Offset		Semi Major Axis			Distance									
Measured Depth (ft)	Vertical Depth (ft)	Measured Depth (ft)	Vertical Depth (ft)	Reference (ft)	Offset (ft)	Highside Toolface (°)	Offset Wellbore Centre +N/-S (ft)	+E/-W (ft)	Between Centres (ft)	Between Ellipses (ft)	Minimum Separation (ft)	Separation Factor	Warning			
0.0	0.0	0.0	0.0	0.0	0.0	-89.73	0.3	-68.1	68.1							
100.0	100.0	97.0	97.0	0.1	0.1	-89.73	0.3	-68.1	68.1	67.9	0.22	307.481				
200.0	200.0	197.0	197.0	0.3	0.3	-89.73	0.3	-68.1	68.1	67.4	0.67	101.979	CC, ES			
300.0	300.0	297.0	297.0	0.5	0.6	130.66	0.3	-68.1	68.6	67.5	1.10	62.596				
400.0	400.0	397.0	397.0	0.7	0.8	132.26	0.3	-68.1	70.4	68.9	1.52	46.167				
500.0	499.9	496.9	496.9	1.0	1.0	134.76	0.3	-68.1	73.4	71.4	1.97	37.307				
600.0	599.7	596.7	596.7	1.2	1.2	137.92	0.3	-68.1	77.8	75.4	2.42	32.164				
700.0	699.4	696.4	696.4	1.5	1.5	141.48	0.3	-68.1	83.8	80.9	2.88	29.122				
800.0	798.9	795.9	795.9	1.7	1.7	145.17	0.3	-68.1	91.5	88.2	3.34	27.395				
900.0	898.3	895.3	895.3	2.0	1.9	148.78	0.3	-68.1	101.0	97.2	3.80	26.551				
1,000.0	997.4	994.4	994.4	2.3	2.1	152.17	0.3	-68.1	112.4	108.1	4.27	26.325				
1,100.0	1,096.3	1,094.4	1,094.4	2.7	2.3	155.59	0.7	-67.4	125.3	120.5	4.73	26.495				
1,200.0	1,194.9	1,194.3	1,194.3	3.0	2.6	159.24	2.0	-65.2	139.2	134.0	5.17	26.903				
1,300.0	1,293.3	1,293.9	1,293.8	3.4	2.8	162.98	4.1	-61.6	154.5	148.9	5.62	27.496				
1,400.0	1,391.3	1,393.1	1,392.8	3.8	3.0	166.71	7.2	-56.5	170.9	164.8	6.07	28.156				
1,500.0	1,489.4	1,492.3	1,491.7	4.2	3.2	170.28	11.0	-49.9	187.4	180.9	6.53	28.704				

CC - Min centre to center distance or convergent point, SF - min separation factor, ES - min ellipse separation

SRC Eberle 14-32-31CHZM Pad Sec.32-T1N-R66W - SRC Eberle 13-32CHZ - Wellbore #1 - Plan #1 (1)														Offset Site Error:	0.0 ft
Survey Program: 0-MWD														Offset Well Error:	0.0 ft
Reference		Offset		Semi Major Axis			Distance		Between		Minimum		Separation		Warning
Measured Depth (ft)	Vertical Depth (ft)	Measured Depth (ft)	Vertical Depth (ft)	Reference (ft)	Offset (ft)	Highside Toolface (°)	Offset Wellbore Centre +N/-S (ft)	+E/-W (ft)	Between Centres (ft)	Between Ellipses (ft)	Minimum Separation (ft)	Separation Factor			
1,600.0	1,587.5	1,591.2	1,590.2	4.7	3.5	173.72	15.8	-41.8	204.0	197.0	7.00	29.152			
1,700.0	1,685.6	1,689.9	1,688.2	5.1	3.7	177.07	21.4	-32.3	220.8	213.3	7.48	29.509			
1,800.0	1,783.6	1,788.3	1,785.8	5.5	4.0	-179.67	27.8	-21.4	238.0	230.0	7.99	29.781			
1,900.0	1,881.7	1,886.3	1,882.8	5.9	4.3	-176.48	35.0	-9.1	255.6	247.1	8.53	29.976			
2,000.0	1,979.8	1,984.0	1,979.1	6.4	4.6	-173.37	43.0	4.6	273.9	264.8	9.10	30.101			
2,100.0	2,077.9	2,081.2	2,074.8	6.8	4.9	-170.33	51.9	19.6	292.8	283.1	9.70	30.176			
2,200.0	2,175.9	2,178.1	2,170.1	7.2	5.2	-167.58	60.9	35.0	312.4	302.1	10.34	30.229			
2,300.0	2,274.0	2,275.1	2,265.4	7.7	5.5	-165.14	70.0	50.4	332.7	321.7	10.99	30.282			
2,400.0	2,372.1	2,372.1	2,360.7	8.1	5.9	-162.99	79.0	65.8	353.5	341.9	11.65	30.336			
2,500.0	2,470.1	2,469.1	2,456.0	8.6	6.2	-161.07	88.1	81.2	374.8	362.4	12.33	30.392			
2,600.0	2,568.2	2,566.1	2,551.4	9.0	6.6	-159.36	97.1	96.6	396.4	383.4	13.02	30.450			
2,700.0	2,666.3	2,663.0	2,646.7	9.4	7.0	-157.83	106.2	112.0	418.3	404.6	13.71	30.509			
2,800.0	2,764.4	2,760.0	2,742.0	9.9	7.3	-156.44	115.2	127.4	440.4	426.0	14.41	30.570			
2,900.0	2,862.4	2,857.0	2,837.3	10.3	7.7	-155.19	124.3	142.8	462.8	447.7	15.11	30.631			
3,000.0	2,960.5	2,954.0	2,932.7	10.8	8.1	-154.05	133.3	158.2	485.4	469.6	15.82	30.692			
3,100.0	3,058.6	3,051.0	3,028.0	11.2	8.5	-153.02	142.4	173.6	508.2	491.6	16.52	30.754			
3,200.0	3,156.7	3,147.9	3,123.3	11.6	8.8	-152.07	151.4	189.0	531.0	513.8	17.23	30.815			
3,300.0	3,254.7	3,244.9	3,218.6	12.1	9.2	-151.20	160.5	204.4	554.1	536.1	17.94	30.876			
3,400.0	3,352.8	3,341.9	3,313.9	12.5	9.6	-150.40	169.5	219.8	577.2	558.5	18.66	30.936			
3,500.0	3,450.9	3,438.9	3,409.3	13.0	10.0	-149.66	178.6	235.2	600.4	581.1	19.37	30.995			
3,600.0	3,548.9	3,535.9	3,504.6	13.4	10.4	-148.97	187.6	250.6	623.7	603.7	20.09	31.053			
3,700.0	3,647.0	3,632.9	3,599.9	13.8	10.8	-148.34	196.7	266.0	647.1	626.3	20.80	31.109			
3,800.0	3,745.1	3,729.8	3,695.2	14.3	11.2	-147.75	205.7	281.4	670.6	649.1	21.52	31.165			
3,900.0	3,843.2	3,826.8	3,790.6	14.7	11.5	-147.20	214.8	296.7	694.1	671.9	22.24	31.219			
4,000.0	3,941.2	3,923.8	3,885.9	15.2	11.9	-146.68	223.8	312.1	717.7	694.8	22.95	31.271			
4,100.0	4,039.3	4,020.8	3,981.2	15.6	12.3	-146.20	232.9	327.5	741.4	717.7	23.67	31.322			
4,200.0	4,137.4	4,117.8	4,076.5	16.0	12.7	-145.75	242.0	342.9	765.1	740.7	24.39	31.372			
4,300.0	4,235.5	4,214.7	4,171.8	16.5	13.1	-145.32	251.0	358.3	788.8	763.7	25.10	31.420			
4,400.0	4,333.5	4,311.7	4,267.2	16.9	13.5	-144.92	260.1	373.7	812.6	786.7	25.82	31.467			
4,500.0	4,431.6	4,408.7	4,362.5	17.4	13.9	-144.54	269.1	389.1	836.4	809.8	26.54	31.513			
4,600.0	4,529.7	4,505.7	4,457.8	17.8	14.3	-144.18	278.2	404.5	860.2	832.9	27.26	31.557			
4,700.0	4,627.7	4,602.7	4,553.1	18.3	14.7	-143.85	287.2	419.9	884.1	856.1	27.98	31.600			
4,800.0	4,725.8	4,699.7	4,648.5	18.7	15.1	-143.53	296.3	435.3	908.0	879.3	28.69	31.641			
4,900.0	4,823.9	4,796.6	4,743.8	19.1	15.5	-143.22	305.3	450.7	931.9	902.5	29.41	31.682			
5,000.0	4,922.0	4,893.6	4,839.1	19.6	15.9	-142.93	314.4	466.1	955.8	925.7	30.13	31.721			
5,100.0	5,020.0	4,990.6	4,934.4	20.0	16.2	-142.66	323.4	481.5	979.8	948.9	30.85	31.759			
5,200.0	5,118.1	5,087.6	5,029.7	20.5	16.6	-142.40	332.5	496.9	1,003.8	972.2	31.57	31.796			
5,300.0	5,216.2	5,184.6	5,125.1	20.9	17.0	-142.15	341.5	512.3	1,027.8	995.5	32.29	31.831			
5,400.0	5,314.3	5,281.5	5,220.4	21.3	17.4	-141.91	350.6	527.7	1,051.8	1,018.8	33.01	31.866			
5,500.0	5,412.3	5,378.5	5,315.7	21.8	17.8	-141.68	359.6	543.1	1,075.8	1,042.1	33.72	31.900			
5,600.0	5,510.4	5,475.5	5,411.0	22.2	18.2	-141.47	368.7	558.5	1,099.9	1,065.4	34.44	31.932			
5,700.0	5,608.5	5,572.5	5,506.4	22.7	18.6	-141.26	377.7	573.9	1,123.9	1,088.8	35.16	31.964			
5,800.0	5,706.5	5,669.5	5,601.7	23.1	19.0	-141.06	386.8	589.3	1,148.0	1,112.1	35.88	31.995			
5,900.0	5,804.6	5,766.4	5,697.0	23.6	19.4	-140.87	395.8	604.7	1,172.1	1,135.5	36.60	32.025			
6,000.0	5,902.7	5,863.4	5,792.3	24.0	19.8	-140.68	404.9	620.1	1,196.2	1,158.9	37.32	32.054			
6,100.0	6,000.8	5,960.4	5,887.6	24.4	20.2	-140.51	414.0	635.5	1,220.3	1,182.3	38.04	32.082			
6,200.0	6,098.8	6,057.4	5,983.0	24.9	20.6	-140.34	423.0	650.9	1,244.5	1,205.7	38.76	32.109			
6,300.0	6,196.9	6,154.4	6,078.3	25.3	21.0	-140.17	432.1	666.3	1,268.6	1,229.1	39.48	32.136			
6,400.0	6,295.1	6,251.4	6,173.7	25.7	21.4	-140.17	441.1	681.7	1,292.3	1,252.1	40.22	32.135			
6,500.0	6,393.8	6,349.0	6,269.5	26.0	21.8	-140.20	450.2	697.2	1,313.7	1,272.8	40.91	32.114			
6,600.0	6,493.0	6,476.0	6,394.9	26.2	22.2	-140.08	460.7	715.1	1,331.5	1,289.9	41.56	32.038			

Offset Design											Offset Site Error:		0.0 ft
Survey Program: 0-MWD											Offset Well Error:		0.0 ft
Reference		Offset		Semi Major Axis			Distance						
Measured Depth	Vertical Depth	Measured Depth	Vertical Depth	Reference	Offset	Highside Toolface	Offset Wellbore Centre		Between Centres	Between Ellipses	Minimum Separation	Separation Factor	Warning
(ft)	(ft)	(ft)	(ft)	(ft)	(ft)	(°)	+N/-S (ft)	+E/-W (ft)	(ft)	(ft)	(ft)		
6,700.0	6,592.6	6,605.8	6,523.8	26.4	22.5	-140.00	468.6	728.4	1,344.4	1,302.3	42.10	31.936	
6,800.0	6,692.5	6,736.9	6,654.4	26.6	22.8	-139.94	473.5	736.7	1,352.4	1,309.8	42.53	31.800	
6,900.0	6,792.4	6,868.6	6,786.1	26.7	23.0	-139.92	475.3	739.9	1,355.3	1,312.4	42.87	31.616	
7,000.0	6,892.4	6,971.9	6,889.4	26.8	23.1	0.25	475.3	739.9	1,355.3	1,313.7	41.62	32.562	
7,100.0	6,992.3	7,072.6	6,990.1	26.9	23.2	90.30	475.3	737.0	1,355.3	1,312.0	43.37	31.252	
7,200.0	7,090.9	7,173.8	7,089.8	26.9	23.2	90.31	475.3	720.9	1,355.3	1,312.0	43.33	31.280	
7,300.0	7,186.3	7,274.9	7,186.3	26.8	23.1	90.32	475.3	690.9	1,355.3	1,312.2	43.08	31.462	
7,400.0	7,276.6	7,376.1	7,277.6	26.6	22.9	90.31	475.2	647.5	1,355.3	1,312.6	42.68	31.752	
7,500.0	7,360.1	7,477.2	7,361.9	26.4	22.6	90.31	475.1	591.8	1,355.2	1,313.0	42.24	32.081	
7,600.0	7,435.1	7,578.3	7,437.5	26.2	22.4	90.29	475.0	524.8	1,355.2	1,313.3	41.90	32.346	
7,700.0	7,500.3	7,679.3	7,502.9	26.0	22.2	90.27	474.9	447.9	1,355.2	1,313.4	41.80	32.420	
7,800.0	7,554.2	7,780.3	7,556.7	25.8	22.1	90.25	474.8	362.6	1,355.1	1,313.0	42.11	32.178	
7,900.0	7,595.9	7,881.1	7,598.1	25.6	22.3	90.22	474.7	270.7	1,355.0	1,312.1	42.96	31.541	
8,000.0	7,624.6	7,981.8	7,626.0	25.5	22.7	90.19	474.6	174.1	1,355.0	1,310.6	44.41	30.510	
8,100.0	7,639.6	8,082.4	7,640.2	25.4	23.5	90.15	474.5	74.6	1,354.9	1,308.5	46.43	29.179	
8,200.0	7,642.0	8,182.6	7,642.0	25.6	24.6	90.13	474.3	-25.6	1,354.8	1,305.9	48.95	27.678	
8,300.0	7,642.0	8,282.6	7,642.0	26.3	26.0	90.13	474.2	-125.6	1,354.8	1,302.8	51.94	26.085	
8,400.0	7,642.0	8,382.6	7,642.0	27.7	27.7	90.13	474.1	-225.6	1,354.7	1,299.4	55.33	24.486	
8,500.0	7,642.0	8,482.6	7,642.0	29.5	29.5	90.13	473.9	-325.6	1,354.7	1,295.6	59.05	22.939	
8,600.0	7,642.0	8,582.6	7,642.0	31.5	31.5	90.13	473.8	-425.6	1,354.6	1,291.5	63.06	21.481	
8,700.0	7,642.0	8,682.6	7,642.0	33.7	33.7	90.13	473.7	-525.6	1,354.5	1,287.2	67.30	20.128	
8,800.0	7,642.0	8,782.6	7,642.0	35.9	35.9	90.13	473.5	-625.6	1,354.5	1,282.8	71.72	18.885	
8,900.0	7,642.0	8,882.6	7,642.0	38.3	38.2	90.13	473.4	-725.6	1,354.4	1,278.1	76.30	17.750	
9,000.0	7,642.0	8,982.6	7,642.0	40.6	40.5	90.13	473.3	-825.6	1,354.4	1,273.3	81.01	16.718	
9,100.0	7,642.0	9,082.6	7,642.0	43.1	42.9	90.13	473.2	-925.6	1,354.3	1,268.5	85.83	15.778	
9,200.0	7,642.0	9,182.6	7,642.0	45.6	45.4	90.13	473.0	-1,025.6	1,354.2	1,263.5	90.74	14.924	
9,300.0	7,642.0	9,282.6	7,642.0	48.1	47.9	90.13	472.9	-1,125.6	1,354.2	1,258.4	95.73	14.146	
9,400.0	7,642.0	9,382.6	7,642.0	50.6	50.4	90.13	472.8	-1,225.6	1,354.1	1,253.3	100.78	13.436	
9,500.0	7,642.0	9,482.6	7,642.0	53.2	52.9	90.13	472.6	-1,325.6	1,354.0	1,248.2	105.89	12.788	
9,600.0	7,642.0	9,582.6	7,642.0	55.8	55.5	90.13	472.5	-1,425.6	1,354.0	1,242.9	111.04	12.193	
9,700.0	7,642.0	9,682.6	7,642.0	58.4	58.1	90.13	472.4	-1,525.6	1,353.9	1,237.7	116.24	11.648	
9,800.0	7,642.0	9,782.6	7,642.0	61.0	60.7	90.13	472.2	-1,625.6	1,353.9	1,232.4	121.47	11.145	
9,900.0	7,642.0	9,882.6	7,642.0	63.6	63.4	90.13	472.1	-1,725.6	1,353.8	1,227.1	126.74	10.682	
10,000.0	7,642.0	9,982.6	7,642.0	66.3	66.0	90.13	472.0	-1,825.6	1,353.7	1,221.7	132.03	10.253	
10,100.0	7,642.0	10,082.6	7,642.0	68.9	68.7	90.13	471.9	-1,925.6	1,353.7	1,216.3	137.35	9.855	
10,200.0	7,642.0	10,182.6	7,642.0	71.6	71.3	90.13	471.7	-2,025.6	1,353.6	1,210.9	142.69	9.486	
10,300.0	7,642.0	10,282.6	7,642.0	74.3	74.0	90.13	471.6	-2,125.6	1,353.5	1,205.5	148.06	9.142	
10,400.0	7,642.0	10,382.6	7,642.0	77.0	76.7	90.13	471.5	-2,225.6	1,353.5	1,200.0	153.43	8.821	
10,500.0	7,642.0	10,482.6	7,642.0	79.7	79.4	90.13	471.3	-2,325.6	1,353.4	1,194.6	158.83	8.521	
10,600.0	7,642.0	10,582.6	7,642.0	82.4	82.1	90.13	471.2	-2,425.6	1,353.4	1,189.1	164.24	8.240	
10,700.0	7,642.0	10,682.6	7,642.0	85.1	84.8	90.13	471.1	-2,525.6	1,353.3	1,183.6	169.66	7.977	
10,800.0	7,642.0	10,782.6	7,642.0	87.8	87.5	90.13	470.9	-2,625.6	1,353.2	1,178.1	175.09	7.729	
10,900.0	7,642.0	10,882.6	7,642.0	90.5	90.2	90.13	470.8	-2,725.6	1,353.2	1,172.6	180.54	7.495	
11,000.0	7,642.0	10,982.6	7,642.0	93.3	93.0	90.13	470.7	-2,825.6	1,353.1	1,167.1	185.99	7.275	
11,100.0	7,642.0	11,082.6	7,642.0	96.0	95.7	90.13	470.5	-2,925.6	1,353.0	1,161.6	191.45	7.067	
11,200.0	7,642.0	11,182.6	7,642.0	98.7	98.4	90.13	470.4	-3,025.6	1,353.0	1,156.1	196.92	6.871	
11,300.0	7,642.0	11,282.6	7,642.0	101.5	101.2	90.13	470.3	-3,125.6	1,352.9	1,150.5	202.40	6.684	
11,400.0	7,642.0	11,382.6	7,642.0	104.2	103.9	90.13	470.2	-3,225.6	1,352.9	1,145.0	207.89	6.508	
11,500.0	7,642.0	11,482.6	7,642.0	106.9	106.7	90.13	470.0	-3,325.6	1,352.8	1,139.4	213.38	6.340	
11,600.0	7,642.0	11,582.6	7,642.0	109.7	109.4	90.13	469.9	-3,425.6	1,352.7	1,133.9	218.88	6.180	
11,700.0	7,642.0	11,682.6	7,642.0	112.4	112.2	90.13	469.8	-3,525.6	1,352.7	1,128.3	224.38	6.028	

Offset Design													Offset Site Error:	
Survey Program: 0-MWD													Offset Well Error:	
Reference		Offset		Semi Major Axis			Distance							
Measured Depth	Vertical Depth	Measured Depth	Vertical Depth	Reference	Offset	Highside Toolface	Offset Wellbore Centre		Between Centres	Between Ellipses	Minimum Separation	Separation Factor	Warning	
(ft)	(ft)	(ft)	(ft)	(ft)	(ft)	(°)	+N/-S (ft)	+E/-W (ft)	(ft)	(ft)	(ft)			
11,800.0	7,642.0	11,782.6	7,642.0	115.2	114.9	90.13	469.6	-3,625.6	1,352.6	1,122.7	229.89	5.884		
11,900.0	7,642.0	11,882.6	7,642.0	118.0	117.7	90.13	469.5	-3,725.6	1,352.5	1,117.1	235.40	5.746		
12,000.0	7,642.0	11,982.6	7,642.0	120.7	120.4	90.13	469.4	-3,825.6	1,352.5	1,111.6	240.92	5.614		
12,100.0	7,642.0	12,082.6	7,642.0	123.5	123.2	90.13	469.2	-3,925.6	1,352.4	1,106.0	246.44	5.488		
12,154.8	7,642.0	12,137.4	7,642.0	125.0	124.7	90.13	469.2	-3,980.4	1,352.4	1,102.9	249.47	5.421		
12,200.0	7,642.0	12,146.0	7,642.0	126.2	124.9	90.13	469.2	-3,988.9	1,352.9	1,101.9	250.95	5.391		
12,300.0	7,642.0	12,146.0	7,642.0	129.0	124.9	90.13	469.2	-3,988.9	1,359.2	1,105.5	253.72	5.357		
12,400.0	7,642.0	12,146.0	7,642.0	131.8	124.9	90.13	469.2	-3,988.9	1,372.8	1,116.3	256.48	5.352 SF		
12,500.0	7,642.0	12,146.0	7,642.0	134.5	124.9	90.13	469.2	-3,988.9	1,393.5	1,134.2	259.25	5.375		
12,600.0	7,642.0	12,146.0	7,642.0	137.3	124.9	90.13	469.2	-3,988.9	1,420.9	1,158.8	262.02	5.423		
12,700.0	7,642.0	12,146.0	7,642.0	140.1	124.9	90.13	469.2	-3,988.9	1,454.7	1,189.9	264.79	5.494		
12,800.0	7,642.0	12,146.0	7,642.0	142.8	124.9	90.13	469.2	-3,988.9	1,494.4	1,226.8	267.57	5.585		
12,900.0	7,642.0	12,146.0	7,642.0	145.6	124.9	90.13	469.2	-3,988.9	1,539.6	1,269.3	270.34	5.695		
13,000.0	7,642.0	12,146.0	7,642.0	148.4	124.9	90.13	469.2	-3,988.9	1,589.8	1,316.7	273.11	5.821		
13,100.0	7,642.0	12,146.0	7,642.0	151.2	124.9	90.13	469.2	-3,988.9	1,644.6	1,368.7	275.89	5.961		
13,200.0	7,642.0	12,146.0	7,642.0	153.9	124.9	90.13	469.2	-3,988.9	1,703.5	1,424.8	278.67	6.113		
13,300.0	7,642.0	12,146.0	7,642.0	156.7	124.9	90.13	469.2	-3,988.9	1,766.1	1,484.6	281.44	6.275		
13,400.0	7,642.0	12,146.0	7,642.0	159.5	124.9	90.13	469.2	-3,988.9	1,832.0	1,547.8	284.22	6.446		
13,500.0	7,642.0	12,146.0	7,642.0	162.3	124.9	90.13	469.2	-3,988.9	1,900.9	1,613.9	287.00	6.623		
13,600.0	7,642.0	12,146.0	7,642.0	165.0	124.9	90.13	469.2	-3,988.9	1,972.4	1,682.7	289.78	6.807		
13,700.0	7,642.0	12,146.0	7,642.0	167.8	124.9	90.13	469.2	-3,988.9	2,046.4	1,753.8	292.56	6.995		
13,800.0	7,642.0	12,146.0	7,642.0	170.6	124.9	90.13	469.2	-3,988.9	2,122.5	1,827.1	295.35	7.186		
13,900.0	7,642.0	12,146.0	7,642.0	173.4	124.9	90.13	469.2	-3,988.9	2,200.5	1,902.3	298.13	7.381		
14,000.0	7,642.0	12,146.0	7,642.0	176.2	124.9	90.13	469.2	-3,988.9	2,280.2	1,979.3	300.91	7.578		
14,100.0	7,642.0	12,146.0	7,642.0	178.9	124.9	90.13	469.2	-3,988.9	2,361.4	2,057.7	303.70	7.776		
14,200.0	7,642.0	12,146.0	7,642.0	181.7	124.9	90.13	469.2	-3,988.9	2,444.1	2,137.6	306.48	7.975		
14,300.0	7,642.0	12,146.0	7,642.0	184.5	124.9	90.13	469.2	-3,988.9	2,528.0	2,218.7	309.27	8.174		
14,400.0	7,642.0	12,146.0	7,642.0	187.3	124.9	90.13	469.2	-3,988.9	2,613.0	2,301.0	312.05	8.374		
14,500.0	7,642.0	12,146.0	7,642.0	190.1	124.9	90.13	469.2	-3,988.9	2,699.1	2,384.2	314.84	8.573		
14,600.0	7,642.0	12,146.0	7,642.0	192.9	124.9	90.13	469.2	-3,988.9	2,786.1	2,468.4	317.62	8.772		
14,700.0	7,642.0	12,146.0	7,642.0	195.7	124.9	90.13	469.2	-3,988.9	2,873.9	2,553.5	320.41	8.969		
14,800.0	7,642.0	12,146.0	7,642.0	198.4	124.9	90.13	469.2	-3,988.9	2,962.5	2,639.3	323.20	9.166		
14,835.2	7,642.0	12,146.0	7,642.0	199.4	124.9	90.13	469.2	-3,988.9	2,993.9	2,669.7	324.18	9.235		

Company:	Synergy Resources	Local Co-ordinate Reference:	Well SRC Eberle 14-32-31CHZM
Project:	SEC.32-T1N-R66W	TVD Reference:	WELL @ 5046.0ft (RKB - 12')
Reference Site:	SRC Eberle 14-32-31CHZM Pad Sec.32-T1N-R66W	MD Reference:	WELL @ 5046.0ft (RKB - 12')
Site Error:	0.0ft	North Reference:	True
Reference Well:	SRC Eberle 14-32-31CHZM	Survey Calculation Method:	Minimum Curvature
Well Error:	0.0ft	Output errors are at	2.00 sigma
Reference Wellbore	Wellbore #1	Database:	Landmark
Reference Design:	Plan #2 (1-2-14)	Offset TVD Reference:	Offset Datum

Offset Design													Offset Site Error:	0.0 ft
Survey Program: 0-MWD													Offset Well Error:	0.0 ft
Measured Depth (ft)	Vertical Depth (ft)	Measured Depth (ft)	Vertical Depth (ft)	Reference	Offset	Semi Major Axis	Highside Toolface (°)	Offset Wellbore Centre +N/-S (ft)	+E/-W (ft)	Between Centres (ft)	Between Ellipses (ft)	Minimum Separation (ft)	Separation Factor	Warning
0.0	0.0	0.0	0.0	0.0	0.0	-89.57	-89.57	0.3	-45.4	45.4				
100.0	100.0	98.0	98.0	0.1	0.1	-89.57	-89.57	0.3	-45.4	45.4	45.2	0.22	203.957	
200.0	200.0	198.0	198.0	0.3	0.3	-89.57	-89.57	0.3	-45.4	45.4	44.7	0.67	67.759 CC, ES	
300.0	300.0	298.0	298.0	0.5	0.6	131.09	131.09	0.3	-45.4	46.0	44.9	1.10	41.820	
400.0	400.0	398.0	398.0	0.7	0.8	133.45	133.45	0.3	-45.4	47.7	46.2	1.53	31.255	
500.0	499.9	497.9	497.9	1.0	1.0	137.00	137.00	0.3	-45.4	50.8	48.8	1.97	25.807	
600.0	599.7	597.7	597.7	1.2	1.2	141.27	141.27	0.3	-45.4	55.4	53.0	2.42	22.908	
700.0	699.4	697.4	697.4	1.5	1.5	145.79	145.79	0.3	-45.4	61.8	58.9	2.88	21.474	
800.0	798.9	796.9	796.9	1.7	1.7	150.17	150.17	0.3	-45.4	69.9	66.6	3.33	20.963	
900.0	898.3	897.1	897.1	2.0	1.9	155.31	155.31	1.5	-44.2	79.4	75.6	3.79	20.964	
1,000.0	997.4	996.8	996.7	2.3	2.1	161.85	161.85	5.2	-40.7	90.2	86.0	4.23	21.327	
1,100.0	1,096.3	1,095.7	1,095.2	2.7	2.4	169.02	169.02	11.3	-34.8	103.4	98.7	4.68	22.084	
1,200.0	1,194.9	1,193.5	1,192.2	3.0	2.6	176.19	176.19	19.7	-26.6	119.5	114.4	5.15	23.216	
1,300.0	1,293.3	1,289.9	1,287.5	3.4	2.9	-177.09	-177.09	30.4	-16.3	139.3	133.6	5.65	24.648	
1,400.0	1,391.3	1,384.8	1,380.7	3.8	3.2	-171.05	-171.05	43.1	-4.0	162.5	156.3	6.21	26.190	
1,500.0	1,489.4	1,479.7	1,473.5	4.2	3.5	-165.81	-165.81	57.5	9.9	188.0	181.2	6.81	27.610	
1,600.0	1,587.5	1,575.1	1,566.7	4.7	3.9	-161.74	-161.74	72.2	24.1	214.7	207.3	7.44	28.867	
1,700.0	1,685.6	1,670.4	1,659.8	5.1	4.2	-158.58	-158.58	86.8	38.2	242.2	234.1	8.08	29.972	
1,800.0	1,783.6	1,765.8	1,753.0	5.5	4.6	-156.05	-156.05	101.5	52.4	270.2	261.5	8.74	30.936	
1,900.0	1,881.7	1,861.2	1,846.2	5.9	5.0	-154.00	-154.00	116.1	66.5	298.7	289.3	9.40	31.786	
2,000.0	1,979.8	1,956.5	1,939.3	6.4	5.4	-152.30	-152.30	130.7	80.7	327.4	317.4	10.06	32.537	
2,100.0	2,077.9	2,051.9	2,032.5	6.8	5.8	-150.88	-150.88	145.4	94.8	356.4	345.6	10.73	33.202	
2,200.0	2,175.9	2,147.3	2,125.7	7.2	6.2	-149.67	-149.67	160.0	109.0	385.5	374.1	11.41	33.795	
2,300.0	2,274.0	2,242.6	2,218.8	7.7	6.6	-148.63	-148.63	174.6	123.1	414.8	402.7	12.08	34.326	
2,400.0	2,372.1	2,338.0	2,312.0	8.1	7.0	-147.73	-147.73	189.3	137.3	444.2	431.4	12.76	34.803	
2,500.0	2,470.1	2,433.4	2,405.2	8.6	7.5	-146.93	-146.93	203.9	151.4	473.6	460.2	13.44	35.235	
2,600.0	2,568.2	2,528.7	2,498.3	9.0	7.9	-146.23	-146.23	218.6	165.6	503.2	489.1	14.12	35.627	
2,700.0	2,666.3	2,624.1	2,591.5	9.4	8.3	-145.61	-145.61	233.2	179.7	532.8	518.0	14.81	35.984	
2,800.0	2,764.4	2,719.5	2,684.7	9.9	8.7	-145.06	-145.06	247.8	193.9	562.4	546.9	15.49	36.310	
2,900.0	2,862.4	2,814.8	2,777.8	10.3	9.2	-144.55	-144.55	262.5	208.0	592.1	576.0	16.17	36.609	
3,000.0	2,960.5	2,910.2	2,871.0	10.8	9.6	-144.10	-144.10	277.1	222.2	621.9	605.0	16.86	36.885	
3,100.0	3,058.6	3,005.6	2,964.2	11.2	10.0	-143.69	-143.69	291.7	236.3	651.6	634.1	17.55	37.140	
3,200.0	3,156.7	3,100.9	3,057.3	11.6	10.4	-143.31	-143.31	306.4	250.5	681.4	663.2	18.23	37.375	
3,300.0	3,254.7	3,196.3	3,150.5	12.1	10.9	-142.97	-142.97	321.0	264.7	711.3	692.3	18.92	37.594	
3,400.0	3,352.8	3,291.7	3,243.7	12.5	11.3	-142.65	-142.65	335.7	278.8	741.1	721.5	19.61	37.798	
3,500.0	3,450.9	3,387.0	3,336.8	13.0	11.7	-142.36	-142.36	350.3	293.0	771.0	750.7	20.30	37.988	
3,600.0	3,548.9	3,482.4	3,430.0	13.4	12.2	-142.09	-142.09	364.9	307.1	800.8	779.9	20.98	38.165	
3,700.0	3,647.0	3,577.8	3,523.2	13.8	12.6	-141.84	-141.84	379.6	321.3	830.7	809.1	21.67	38.332	
3,800.0	3,745.1	3,673.1	3,616.3	14.3	13.0	-141.60	-141.60	394.2	335.4	860.6	838.3	22.36	38.488	
3,900.0	3,843.2	3,768.5	3,709.5	14.7	13.5	-141.39	-141.39	408.8	349.6	890.6	867.5	23.05	38.635	
4,000.0	3,941.2	3,863.9	3,802.7	15.2	13.9	-141.18	-141.18	423.5	363.7	920.5	896.8	23.74	38.773	
4,100.0	4,039.3	3,959.2	3,895.9	15.6	14.3	-140.99	-140.99	438.1	377.9	950.4	926.0	24.43	38.903	
4,200.0	4,137.4	4,054.6	3,989.0	16.0	14.7	-140.81	-140.81	452.7	392.0	980.4	955.3	25.12	39.027	
4,300.0	4,235.5	4,150.0	4,082.2	16.5	15.2	-140.64	-140.64	467.4	406.2	1,010.3	984.5	25.81	39.143	
4,400.0	4,333.5	4,245.3	4,175.4	16.9	15.6	-140.48	-140.48	482.0	420.3	1,040.3	1,013.8	26.50	39.254	
4,500.0	4,431.6	4,340.7	4,268.5	17.4	16.0	-140.33	-140.33	496.7	434.5	1,070.3	1,043.1	27.19	39.358	
4,600.0	4,529.7	4,436.0	4,361.7	17.8	16.5	-140.19	-140.19	511.3	448.6	1,100.3	1,072.4	27.88	39.458	
4,700.0	4,627.7	4,531.4	4,454.9	18.3	16.9	-140.06	-140.06	525.9	462.8	1,130.2	1,101.7	28.58	39.553	
4,800.0	4,725.8	4,626.8	4,548.0	18.7	17.3	-139.93	-139.93	540.6	476.9	1,160.2	1,131.0	29.27	39.643	
4,900.0	4,823.9	4,722.1	4,641.2	19.1	17.8	-139.81	-139.81	555.2	491.1	1,190.2	1,160.3	29.96	39.729	
5,000.0	4,922.0	4,817.5	4,734.4	19.6	18.2	-139.69	-139.69	569.8	505.2	1,220.2	1,189.6	30.65	39.811	

CC - Min centre to center distance or convergent point, SF - min separation factor, ES - min ellipse separation

Company:	Synergy Resources	Local Co-ordinate Reference:	Well SRC Eberle 14-32-31CHZM
Project:	SEC.32-T1N-R66W	TVD Reference:	WELL @ 5046.0ft (RKB - 12')
Reference Site:	SRC Eberle 14-32-31CHZM Pad Sec.32-T1N-R66W	MD Reference:	WELL @ 5046.0ft (RKB - 12')
Site Error:	0.0ft	North Reference:	True
Reference Well:	SRC Eberle 14-32-31CHZM	Survey Calculation Method:	Minimum Curvature
Well Error:	0.0ft	Output errors are at	2.00 sigma
Reference Wellbore	Wellbore #1	Database:	Landmark
Reference Design:	Plan #2 (1-2-14)	Offset TVD Reference:	Offset Datum

Offset Design SRC Eberle 14-32-31CHZM Pad Sec.32-T1N-R66W - SRC Eberle 13-32NHZ - Wellbore #1 - Plan #1 (1													Offset Site Error:	0.0 ft
Survey Program: 0-MWD													Offset Well Error:	0.0 ft
Measured Depth (ft)	Vertical Depth (ft)	Measured Depth (ft)	Vertical Depth (ft)	Reference	Offset	Semi Major Axis	Highside Toolface (°)	Offset Wellbore Centre +N/-S (ft)	Offset Wellbore Centre +E/-W (ft)	Between Centres (ft)	Between Ellipses (ft)	Minimum Separation (ft)	Separation Factor	Warning
5,100.0	5,020.0	4,912.9	4,827.5	20.0	18.7	-139.58		584.5	519.4	1,250.2	1,218.9	31.34	39.889	
5,200.0	5,118.1	5,008.2	4,920.7	20.5	19.1	-139.48		599.1	533.5	1,280.2	1,248.2	32.03	39.964	
5,300.0	5,216.2	5,103.6	5,013.9	20.9	19.5	-139.38		613.8	547.7	1,310.3	1,277.5	32.73	40.036	
5,400.0	5,314.3	5,199.0	5,107.0	21.3	20.0	-139.28		628.4	561.8	1,340.3	1,306.8	33.42	40.104	
5,500.0	5,412.3	5,294.3	5,200.2	21.8	20.4	-139.19		643.0	576.0	1,370.3	1,336.2	34.11	40.170	
5,600.0	5,510.4	5,389.7	5,293.4	22.2	20.8	-139.11		657.7	590.1	1,400.3	1,365.5	34.80	40.233	
5,700.0	5,608.5	5,485.1	5,386.5	22.7	21.3	-139.02		672.3	604.3	1,430.3	1,394.8	35.50	40.293	
5,800.0	5,706.5	5,580.4	5,479.7	23.1	21.7	-138.94		686.9	618.4	1,460.4	1,424.2	36.19	40.351	
5,900.0	5,804.6	5,675.8	5,572.9	23.6	22.1	-138.87		701.6	632.6	1,490.4	1,453.5	36.88	40.407	
6,000.0	5,902.7	5,771.2	5,666.0	24.0	22.6	-138.79		716.2	646.7	1,520.4	1,482.8	37.58	40.461	
6,100.0	6,000.8	5,866.5	5,759.2	24.4	23.0	-138.72		730.9	660.9	1,550.4	1,512.2	38.27	40.513	
6,200.0	6,098.8	5,961.9	5,852.4	24.9	23.4	-138.65		745.5	675.0	1,580.5	1,541.5	38.96	40.562	
6,300.0	6,196.9	6,057.3	5,945.5	25.3	23.9	-138.59		760.1	689.2	1,610.5	1,570.9	39.66	40.610	
6,400.0	6,295.1	6,189.4	6,074.9	25.7	24.4	-138.53		775.5	707.9	1,639.6	1,599.1	40.48	40.503	
6,500.0	6,393.8	6,356.7	6,240.2	26.0	24.9	-139.03		798.0	725.8	1,662.8	1,621.5	41.23	40.330	
6,600.0	6,493.0	6,527.8	6,410.4	26.2	25.3	-139.34		809.8	737.3	1,679.2	1,637.3	41.86	40.112	
6,700.0	6,592.6	6,701.1	6,583.6	26.4	25.5	-139.66		814.3	741.6	1,688.6	1,646.2	42.37	39.855	
6,800.0	6,692.5	6,808.0	6,690.5	26.6	25.7	-139.85		814.3	741.6	1,692.8	1,650.1	42.71	39.634	
6,900.0	6,792.4	6,908.3	6,790.8	26.7	25.8	-139.93		814.3	741.2	1,694.4	1,651.3	43.01	39.391	
6,998.0	6,890.4	7,006.4	6,888.3	26.8	25.8	-0.10		814.3	731.1	1,694.4	1,651.2	43.18	39.245	
7,000.0	6,892.4	7,008.4	6,890.3	26.8	25.8	-0.11		814.3	730.7	1,694.3	1,649.0	45.31	37.395	
7,100.0	6,992.3	7,104.7	6,983.7	26.9	25.7	89.24		814.3	707.7	1,694.5	1,651.3	43.18	39.242	
7,200.0	7,090.9	7,198.2	7,070.6	26.9	25.6	88.54		814.3	673.5	1,694.9	1,651.9	42.98	39.431	
7,300.0	7,186.3	7,289.4	7,150.5	26.8	25.4	87.88		814.2	629.5	1,695.5	1,652.8	42.64	39.764	
7,400.0	7,276.6	7,378.6	7,222.6	26.6	25.1	87.25		814.1	577.0	1,696.2	1,654.0	42.23	40.169	
7,500.0	7,360.1	7,466.1	7,286.4	26.4	24.9	86.68		814.0	517.3	1,697.1	1,655.3	41.85	40.555	
7,600.0	7,435.1	7,550.0	7,340.3	26.2	24.6	86.18		814.0	453.1	1,698.0	1,656.4	41.61	40.809	
7,700.0	7,500.3	7,637.0	7,387.9	26.0	24.4	85.72		813.9	380.3	1,698.9	1,657.2	41.65	40.788	
7,800.0	7,554.2	7,720.9	7,425.1	25.8	24.2	85.35		813.8	305.2	1,699.7	1,657.6	42.08	40.388	
7,900.0	7,595.9	7,800.0	7,451.9	25.6	24.1	85.06		813.7	230.8	1,700.4	1,657.4	42.95	39.585	
8,000.0	7,624.6	7,886.5	7,471.7	25.5	24.1	84.83		813.5	146.7	1,700.9	1,656.5	44.40	38.308	
8,100.0	7,639.6	7,968.6	7,480.9	25.4	24.3	84.70		813.4	65.1	1,701.1	1,654.9	46.29	36.750	
8,200.0	7,642.0	8,059.8	7,482.0	25.6	24.9	84.67		813.3	-26.1	1,701.2	1,652.4	48.73	34.912	
8,300.0	7,642.0	8,159.8	7,482.0	26.3	26.1	84.67		813.2	-126.1	1,701.1	1,649.4	51.71	32.898	
8,400.0	7,642.0	8,259.8	7,482.0	27.7	27.7	84.67		813.0	-226.1	1,701.0	1,645.9	55.09	30.875	
8,500.0	7,642.0	8,359.8	7,482.0	29.5	29.5	84.67		812.9	-326.1	1,701.0	1,642.2	58.82	28.920	
8,600.0	7,642.0	8,459.8	7,482.0	31.5	31.5	84.67		812.8	-426.1	1,700.9	1,638.1	62.82	27.078	
8,700.0	7,642.0	8,559.8	7,482.0	33.7	33.7	84.67		812.6	-526.1	1,700.8	1,633.8	67.04	25.370	
8,800.0	7,642.0	8,659.8	7,482.0	35.9	35.9	84.67		812.5	-626.1	1,700.8	1,629.3	71.46	23.802	
8,900.0	7,642.0	8,759.8	7,482.0	38.3	38.2	84.67		812.4	-726.1	1,700.7	1,624.7	76.02	22.370	
9,000.0	7,642.0	8,859.8	7,482.0	40.6	40.6	84.67		812.2	-826.1	1,700.6	1,619.9	80.72	21.068	
9,100.0	7,642.0	8,959.8	7,482.0	43.1	43.0	84.67		812.1	-926.1	1,700.6	1,615.1	85.53	19.884	
9,200.0	7,642.0	9,059.8	7,482.0	45.6	45.5	84.67		812.0	-1,026.1	1,700.5	1,610.1	90.42	18.807	
9,300.0	7,642.0	9,159.8	7,482.0	48.1	48.0	84.67		811.8	-1,126.1	1,700.4	1,605.1	95.39	17.826	
9,400.0	7,642.0	9,259.8	7,482.0	50.6	50.5	84.67		811.7	-1,226.1	1,700.4	1,600.0	100.42	16.932	
9,500.0	7,642.0	9,359.8	7,482.0	53.2	53.1	84.67		811.5	-1,326.1	1,700.3	1,594.8	105.51	16.114	
9,600.0	7,642.0	9,459.8	7,482.0	55.8	55.7	84.67		811.4	-1,426.1	1,700.2	1,589.6	110.65	15.366	
9,700.0	7,642.0	9,559.8	7,482.0	58.4	58.3	84.67		811.3	-1,526.1	1,700.2	1,584.3	115.83	14.678	
9,800.0	7,642.0	9,659.8	7,482.0	61.0	60.9	84.67		811.1	-1,626.1	1,700.1	1,579.1	121.05	14.045	
9,900.0	7,642.0	9,759.8	7,482.0	63.6	63.5	84.67		811.0	-1,726.1	1,700.0	1,573.7	126.30	13.461	
10,000.0	7,642.0	9,859.8	7,482.0	66.3	66.2	84.67		810.9	-1,826.1	1,700.0	1,568.4	131.57	12.920	

CC - Min centre to center distance or convergent point, SF - min separation factor, ES - min ellipse separation

Company:	Synergy Resources	Local Co-ordinate Reference:	Well SRC Eberle 14-32-31CHZM
Project:	SEC.32-T1N-R66W	TVD Reference:	WELL @ 5046.0ft (RKB - 12')
Reference Site:	SRC Eberle 14-32-31CHZM Pad Sec.32-T1N-R66W	MD Reference:	WELL @ 5046.0ft (RKB - 12')
Site Error:	0.0ft	North Reference:	True
Reference Well:	SRC Eberle 14-32-31CHZM	Survey Calculation Method:	Minimum Curvature
Well Error:	0.0ft	Output errors are at	2.00 sigma
Reference Wellbore	Wellbore #1	Database:	Landmark
Reference Design:	Plan #2 (1-2-14)	Offset TVD Reference:	Offset Datum

Offset Design SRC Eberle 14-32-31CHZM Pad Sec.32-T1N-R66W - SRC Eberle 13-32NHZ - Wellbore #1 - Plan #1 (1													Offset Site Error:	0.0 ft
Survey Program: 0-MWD													Offset Well Error:	0.0 ft
Measured Depth (ft)	Vertical Depth (ft)	Measured Depth (ft)	Vertical Depth (ft)	Reference	Offset	Semi Major Axis Reference Offset	Highside Toolface (°)	Offset Wellbore Centre +N/-S (ft)	+E/-W (ft)	Between Centres (ft)	Between Ellipses (ft)	Minimum Separation (ft)	Separation Factor	Warning
10,100.0	7,642.0	9,959.8	7,482.0	68.9	68.8	84.67	84.67	810.7	-1,926.1	1,699.9	1,563.0	136.87	12.420	
10,200.0	7,642.0	10,059.8	7,482.0	71.6	71.5	84.67	84.67	810.6	-2,026.1	1,699.8	1,557.6	142.19	11.954	
10,300.0	7,642.0	10,159.8	7,482.0	74.3	74.2	84.67	84.67	810.5	-2,126.1	1,699.8	1,552.2	147.54	11.521	
10,400.0	7,642.0	10,259.8	7,482.0	77.0	76.9	84.67	84.67	810.3	-2,226.1	1,699.7	1,546.8	152.90	11.117	
10,500.0	7,642.0	10,359.8	7,482.0	79.7	79.6	84.67	84.67	810.2	-2,326.1	1,699.6	1,541.4	158.27	10.739	
10,600.0	7,642.0	10,459.8	7,482.0	82.4	82.3	84.67	84.67	810.1	-2,426.1	1,699.6	1,535.9	163.66	10.385	
10,700.0	7,642.0	10,559.8	7,482.0	85.1	85.0	84.67	84.67	809.9	-2,526.1	1,699.5	1,530.4	169.06	10.053	
10,800.0	7,642.0	10,659.8	7,482.0	87.8	87.7	84.67	84.67	809.8	-2,626.1	1,699.4	1,525.0	174.48	9.740	
10,900.0	7,642.0	10,759.8	7,482.0	90.5	90.4	84.67	84.67	809.7	-2,726.1	1,699.4	1,519.5	179.90	9.446	
11,000.0	7,642.0	10,859.8	7,482.0	93.3	93.1	84.66	84.66	809.5	-2,826.1	1,699.3	1,514.0	185.33	9.169	
11,100.0	7,642.0	10,959.8	7,482.0	96.0	95.9	84.66	84.66	809.4	-2,926.1	1,699.2	1,508.5	190.78	8.907	
11,200.0	7,642.0	11,059.8	7,482.0	98.7	98.6	84.66	84.66	809.2	-3,026.1	1,699.2	1,502.9	196.23	8.659	
11,300.0	7,642.0	11,159.8	7,482.0	101.5	101.3	84.66	84.66	809.1	-3,126.1	1,699.1	1,497.4	201.68	8.425	
11,400.0	7,642.0	11,259.8	7,482.0	104.2	104.1	84.66	84.66	809.0	-3,226.1	1,699.0	1,491.9	207.15	8.202	
11,500.0	7,642.0	11,359.8	7,482.0	106.9	106.8	84.66	84.66	808.8	-3,326.1	1,699.0	1,486.4	212.62	7.991	
11,600.0	7,642.0	11,459.8	7,482.0	109.7	109.6	84.66	84.66	808.7	-3,426.1	1,698.9	1,480.8	218.10	7.790	
11,700.0	7,642.0	11,559.8	7,482.0	112.4	112.3	84.66	84.66	808.6	-3,526.1	1,698.8	1,475.3	223.58	7.598	
11,800.0	7,642.0	11,659.8	7,482.0	115.2	115.1	84.66	84.66	808.4	-3,626.1	1,698.8	1,469.7	229.07	7.416	
11,900.0	7,642.0	11,759.8	7,482.0	118.0	117.8	84.66	84.66	808.3	-3,726.1	1,698.7	1,464.1	234.56	7.242	
12,000.0	7,642.0	11,859.8	7,482.0	120.7	120.6	84.66	84.66	808.2	-3,826.1	1,698.6	1,458.6	240.06	7.076	
12,100.0	7,642.0	11,959.8	7,482.0	123.5	123.3	84.66	84.66	808.0	-3,926.1	1,698.6	1,453.0	245.56	6.917	
12,154.9	7,642.0	12,014.7	7,482.0	125.0	124.8	84.66	84.66	808.0	-3,981.0	1,698.5	1,450.0	248.58	6.833	
12,200.0	7,642.0	12,022.3	7,482.0	126.2	125.1	84.66	84.66	807.9	-3,988.6	1,698.9	1,448.9	250.03	6.795	
12,300.0	7,642.0	12,022.3	7,482.0	129.0	125.1	84.66	84.66	807.9	-3,988.6	1,704.0	1,451.2	252.78	6.741	
12,400.0	7,642.0	12,022.3	7,482.0	131.8	125.1	84.66	84.66	807.9	-3,988.6	1,714.9	1,459.4	255.54	6.711	
12,500.0	7,642.0	12,022.3	7,482.0	134.5	125.1	84.66	84.66	807.9	-3,988.6	1,731.5	1,473.2	258.30	6.704 SF	
12,600.0	7,642.0	12,022.3	7,482.0	137.3	125.1	84.66	84.66	807.9	-3,988.6	1,753.7	1,492.6	261.06	6.718	
12,700.0	7,642.0	12,022.3	7,482.0	140.1	125.1	84.66	84.66	807.9	-3,988.6	1,781.2	1,517.4	263.82	6.752	
12,800.0	7,642.0	12,022.3	7,482.0	142.8	125.1	84.66	84.66	807.9	-3,988.6	1,813.8	1,547.3	266.58	6.804	
12,900.0	7,642.0	12,022.3	7,482.0	145.6	125.1	84.66	84.66	807.9	-3,988.6	1,851.3	1,581.9	269.34	6.873	
13,000.0	7,642.0	12,022.3	7,482.0	148.4	125.1	84.66	84.66	807.9	-3,988.6	1,893.3	1,621.2	272.11	6.958	
13,100.0	7,642.0	12,022.3	7,482.0	151.2	125.1	84.66	84.66	807.9	-3,988.6	1,939.5	1,664.7	274.87	7.056	
13,200.0	7,642.0	12,022.3	7,482.0	153.9	125.1	84.66	84.66	807.9	-3,988.6	1,989.7	1,712.1	277.64	7.167	
13,300.0	7,642.0	12,022.3	7,482.0	156.7	125.1	84.66	84.66	807.9	-3,988.6	2,043.6	1,763.2	280.41	7.288	
13,400.0	7,642.0	12,022.3	7,482.0	159.5	125.1	84.66	84.66	807.9	-3,988.6	2,100.9	1,817.7	283.17	7.419	
13,500.0	7,642.0	12,022.3	7,482.0	162.3	125.1	84.66	84.66	807.9	-3,988.6	2,161.2	1,875.3	285.94	7.558	
13,600.0	7,642.0	12,022.3	7,482.0	165.0	125.1	84.66	84.66	807.9	-3,988.6	2,224.5	1,935.7	288.71	7.705	
13,700.0	7,642.0	12,022.3	7,482.0	167.8	125.1	84.66	84.66	807.9	-3,988.6	2,290.3	1,998.8	291.48	7.857	
13,800.0	7,642.0	12,022.3	7,482.0	170.6	125.1	84.66	84.66	807.9	-3,988.6	2,358.5	2,064.3	294.26	8.015	
13,900.0	7,642.0	12,022.3	7,482.0	173.4	125.1	84.66	84.66	807.9	-3,988.6	2,429.0	2,132.0	297.03	8.178	
14,000.0	7,642.0	12,022.3	7,482.0	176.2	125.1	84.66	84.66	807.9	-3,988.6	2,501.5	2,201.7	299.80	8.344	
14,100.0	7,642.0	12,022.3	7,482.0	178.9	125.1	84.66	84.66	807.9	-3,988.6	2,575.8	2,273.2	302.57	8.513	
14,200.0	7,642.0	12,022.3	7,482.0	181.7	125.1	84.66	84.66	807.9	-3,988.6	2,651.8	2,346.4	305.35	8.684	
14,300.0	7,642.0	12,022.3	7,482.0	184.5	125.1	84.66	84.66	807.9	-3,988.6	2,729.3	2,421.2	308.12	8.858	
14,400.0	7,642.0	12,022.3	7,482.0	187.3	125.1	84.66	84.66	807.9	-3,988.6	2,808.3	2,497.4	310.90	9.033	
14,500.0	7,642.0	12,022.3	7,482.0	190.1	125.1	84.66	84.66	807.9	-3,988.6	2,888.5	2,574.9	313.67	9.209	
14,600.0	7,642.0	12,022.3	7,482.0	192.9	125.1	84.66	84.66	807.9	-3,988.6	2,970.0	2,653.6	316.45	9.385	
14,700.0	7,642.0	12,022.3	7,482.0	195.7	125.1	84.66	84.66	807.9	-3,988.6	3,052.6	2,733.4	319.23	9.562	
14,800.0	7,642.0	12,022.3	7,482.0	198.4	125.1	84.66	84.66	807.9	-3,988.6	3,136.2	2,814.2	322.00	9.739	
14,835.2	7,642.0	12,022.3	7,482.0	199.4	125.1	84.66	84.66	807.9	-3,988.6	3,165.8	2,842.8	322.98	9.802	

SRC Eberle 14-32-31CHZM Pad Sec.32-T1N-R66W - SRC Eberle 14-32-31NHZM - Wellbore #1 - Plan													Offset Site Error:	0.0 ft
Survey Program: 0-MWD													Offset Well Error:	0.0 ft
Reference		Offset		Semi Major Axis			Distance							
Measured Depth	Vertical Depth	Measured Depth	Vertical Depth	Reference	Offset	Highside Toolface	Offset Wellbore Centre		Between Centres	Between Ellipses	Minimum Separation	Separation Factor	Warning	
(ft)	(ft)	(ft)	(ft)	(ft)	(ft)	(°)	+N/-S (ft)	+E/-W (ft)	(ft)	(ft)	(ft)			
0.0	0.0	0.0	0.0	0.0	0.0	-89.22	0.3	-24.7	24.7					
100.0	100.0	99.0	99.0	0.1	0.1	-89.22	0.3	-24.7	24.7	24.4	0.22	110.243		
200.0	200.0	199.0	199.0	0.3	0.3	-89.22	0.3	-24.7	24.7	24.0	0.67	36.686	CC	
300.0	300.0	299.0	299.0	0.5	0.6	132.11	0.3	-24.7	25.2	24.1	1.10	22.915		
400.0	400.0	399.0	399.0	0.7	0.8	136.21	0.3	-24.7	27.1	25.5	1.53	17.696		
500.0	499.9	499.3	499.3	1.0	1.0	141.26	-0.2	-24.0	29.6	27.6	1.95	15.167		
600.0	599.7	599.8	599.7	1.2	1.2	146.21	-1.7	-21.8	32.1	29.7	2.37	13.547		
700.0	699.4	700.3	700.1	1.5	1.4	151.10	-4.2	-18.2	34.6	31.8	2.80	12.359		
800.0	798.9	800.8	800.5	1.7	1.6	155.95	-7.8	-13.2	37.2	34.0	3.24	11.482		
900.0	898.3	901.4	900.7	2.0	1.9	160.78	-12.4	-6.8	39.9	36.3	3.69	10.836		
1,000.0	997.4	1,002.0	1,000.9	2.3	2.1	165.55	-18.0	1.1	42.8	38.7	4.13	10.363		
1,100.0	1,096.3	1,102.7	1,100.9	2.7	2.4	170.25	-24.6	10.4	46.0	41.4	4.59	10.023		
1,200.0	1,194.9	1,203.4	1,200.7	3.0	2.7	174.85	-32.3	21.2	49.4	44.3	5.05	9.781		
1,300.0	1,293.3	1,304.1	1,300.4	3.4	3.0	179.32	-40.9	33.3	53.1	47.6	5.53	9.609		
1,400.0	1,391.3	1,404.5	1,399.4	3.8	3.4	-176.39	-50.5	46.8	56.8	50.8	6.03	9.415		
1,500.0	1,489.4	1,504.4	1,497.8	4.2	3.7	-172.55	-60.3	60.5	60.5	54.0	6.57	9.210		
1,600.0	1,587.5	1,604.2	1,596.3	4.7	4.1	-169.17	-70.0	74.1	64.5	57.3	7.14	9.037		
1,700.0	1,685.6	1,704.1	1,694.7	5.1	4.5	-166.19	-79.7	87.8	68.6	60.9	7.73	8.883		
1,800.0	1,783.6	1,803.9	1,793.1	5.5	4.8	-163.56	-89.5	101.5	73.0	64.6	8.34	8.747		
1,900.0	1,881.7	1,903.8	1,891.6	5.9	5.2	-161.22	-99.2	115.2	77.4	68.5	8.98	8.626		
2,000.0	1,979.8	2,003.6	1,990.0	6.4	5.6	-159.14	-108.9	128.8	82.0	72.4	9.63	8.516		
2,100.0	2,077.9	2,103.5	2,088.4	6.8	6.0	-157.29	-118.6	142.5	86.7	76.4	10.30	8.418		
2,200.0	2,175.9	2,203.4	2,186.9	7.2	6.4	-155.62	-128.4	156.2	91.4	80.5	10.98	8.330		
2,300.0	2,274.0	2,303.2	2,285.3	7.7	6.8	-154.12	-138.1	169.8	96.2	84.6	11.67	8.250		
2,400.0	2,372.1	2,403.1	2,383.7	8.1	7.1	-152.77	-147.8	183.5	101.1	88.8	12.37	8.178		
2,500.0	2,470.1	2,502.9	2,482.2	8.6	7.5	-151.54	-157.6	197.2	106.1	93.0	13.07	8.113		
2,600.0	2,568.2	2,602.8	2,580.6	9.0	7.9	-150.42	-167.3	210.8	111.0	97.3	13.79	8.055		
2,700.0	2,666.3	2,702.6	2,679.0	9.4	8.3	-149.39	-177.0	224.5	116.1	101.6	14.50	8.002		
2,800.0	2,764.4	2,802.5	2,777.5	9.9	8.7	-148.45	-186.8	238.2	121.1	105.9	15.23	7.953		
2,900.0	2,862.4	2,902.3	2,875.9	10.3	9.1	-147.59	-196.5	251.8	126.2	110.2	15.95	7.910		
3,000.0	2,960.5	3,002.2	2,974.3	10.8	9.5	-146.79	-206.2	265.5	131.3	114.6	16.68	7.869		
3,100.0	3,058.6	3,102.0	3,072.8	11.2	9.9	-146.06	-216.0	279.2	136.4	119.0	17.42	7.833		
3,200.0	3,156.7	3,201.9	3,171.2	11.6	10.3	-145.37	-225.7	292.9	141.6	123.4	18.15	7.799		
3,300.0	3,254.7	3,301.7	3,269.7	12.1	10.7	-144.74	-235.4	306.5	146.7	127.9	18.89	7.768		
3,400.0	3,352.8	3,401.6	3,368.1	12.5	11.0	-144.15	-245.1	320.2	151.9	132.3	19.63	7.740		
3,500.0	3,450.9	3,501.5	3,466.5	13.0	11.4	-143.59	-254.9	333.9	157.1	136.8	20.37	7.713		
3,600.0	3,548.9	3,601.3	3,565.0	13.4	11.8	-143.08	-264.6	347.5	162.3	141.2	21.11	7.689		
3,700.0	3,647.0	3,701.2	3,663.4	13.8	12.2	-142.59	-274.3	361.2	167.6	145.7	21.86	7.667		
3,800.0	3,745.1	3,801.0	3,761.8	14.3	12.6	-142.13	-284.1	374.9	172.8	150.2	22.60	7.646		
3,900.0	3,843.2	3,900.9	3,860.3	14.7	13.0	-141.71	-293.8	388.5	178.1	154.7	23.35	7.626		
4,000.0	3,941.2	4,000.7	3,958.7	15.2	13.4	-141.30	-303.5	402.2	183.3	159.2	24.10	7.608		
4,100.0	4,039.3	4,100.6	4,057.1	15.6	13.8	-140.92	-313.3	415.9	188.6	163.7	24.84	7.591		
4,200.0	4,137.4	4,200.4	4,155.6	16.0	14.2	-140.56	-323.0	429.6	193.9	168.3	25.59	7.575		
4,300.0	4,235.5	4,300.3	4,254.0	16.5	14.6	-140.22	-332.7	443.2	199.1	172.8	26.34	7.560		
4,400.0	4,333.5	4,400.1	4,352.4	16.9	15.0	-139.89	-342.4	456.9	204.4	177.3	27.09	7.546		
4,500.0	4,431.6	4,500.0	4,450.9	17.4	15.4	-139.58	-352.2	470.6	209.7	181.9	27.84	7.533		
4,600.0	4,529.7	4,599.8	4,549.3	17.8	15.8	-139.29	-361.9	484.2	215.0	186.4	28.59	7.521		
4,700.0	4,627.7	4,699.7	4,647.7	18.3	16.2	-139.01	-371.6	497.9	220.3	191.0	29.34	7.509		
4,800.0	4,725.8	4,799.5	4,746.2	18.7	16.6	-138.75	-381.4	511.6	225.6	195.5	30.09	7.498		
4,900.0	4,823.9	4,899.4	4,844.6	19.1	17.0	-138.49	-391.1	525.2	231.0	200.1	30.85	7.488		
5,000.0	4,922.0	4,999.3	4,943.0	19.6	17.4	-138.25	-400.8	538.9	236.3	204.7	31.60	7.478		

Company:	Synergy Resources	Local Co-ordinate Reference:	Well SRC Eberle 14-32-31CHZM
Project:	SEC.32-T1N-R66W	TVD Reference:	WELL @ 5046.0ft (RKB - 12')
Reference Site:	SRC Eberle 14-32-31CHZM Pad Sec.32-T1N-R66W	MD Reference:	WELL @ 5046.0ft (RKB - 12')
Site Error:	0.0ft	North Reference:	True
Reference Well:	SRC Eberle 14-32-31CHZM	Survey Calculation Method:	Minimum Curvature
Well Error:	0.0ft	Output errors are at	2.00 sigma
Reference Wellbore	Wellbore #1	Database:	Landmark
Reference Design:	Plan #2 (1-2-14)	Offset TVD Reference:	Offset Datum

Offset Design SRC Eberle 14-32-31CHZM Pad Sec.32-T1N-R66W - SRC Eberle 14-32-31NHZM - Wellbore #1 - Plan													Offset Site Error:	0.0 ft
Survey Program: 0-MWD													Offset Well Error:	0.0 ft
Measured Depth (ft)	Vertical Depth (ft)	Measured Depth (ft)	Vertical Depth (ft)	Reference	Offset	Highside Toolface (°)	Offset Wellbore Centre +N/-S (ft)	+E/-W (ft)	Between Centres (ft)	Between Ellipses (ft)	Minimum Separation (ft)	Separation Factor	Warning	
5,100.0	5,020.0	5,099.1	5,041.5	20.0	17.7	-138.02	-410.6	552.6	241.6	209.2	32.35	7.468		
5,200.0	5,118.1	5,199.0	5,139.9	20.5	18.1	-137.80	-420.3	566.2	246.9	213.8	33.10	7.459		
5,300.0	5,216.2	5,298.8	5,238.3	20.9	18.5	-137.59	-430.0	579.9	252.3	218.4	33.86	7.451		
5,400.0	5,314.3	5,398.7	5,336.8	21.3	18.9	-137.38	-439.8	593.6	257.6	223.0	34.61	7.443		
5,500.0	5,412.3	5,498.5	5,435.2	21.8	19.3	-137.19	-449.5	607.3	262.9	227.6	35.36	7.435		
5,600.0	5,510.4	5,598.4	5,533.6	22.2	19.7	-137.00	-459.2	620.9	268.3	232.2	36.12	7.428		
5,700.0	5,608.5	5,698.2	5,632.1	22.7	20.1	-136.82	-468.9	634.6	273.6	236.7	36.87	7.421		
5,800.0	5,706.5	5,798.1	5,730.5	23.1	20.5	-136.65	-478.7	648.3	279.0	241.3	37.62	7.415		
5,900.0	5,804.6	5,897.9	5,828.9	23.6	20.9	-136.48	-488.4	661.9	284.3	245.9	38.38	7.408		
6,000.0	5,902.7	5,997.8	5,927.4	24.0	21.3	-136.32	-498.1	675.6	289.7	250.5	39.13	7.402		
6,100.0	6,000.8	6,097.6	6,025.8	24.4	21.7	-136.17	-507.9	689.3	295.0	255.1	39.89	7.396		
6,200.0	6,098.8	6,197.2	6,123.9	24.9	22.1	-136.02	-517.6	702.9	300.4	259.7	40.64	7.392		
6,300.0	6,196.9	6,291.8	6,217.4	25.3	22.3	-136.16	-525.8	714.4	306.7	265.5	41.20	7.444		
6,400.0	6,295.1	6,386.0	6,311.0	25.7	22.6	-136.78	-532.2	723.4	314.4	272.8	41.59	7.558		
6,500.0	6,393.8	6,480.1	6,404.7	26.0	22.7	-137.50	-536.8	729.9	321.5	279.7	41.84	7.685		
6,600.0	6,493.0	6,573.9	6,498.5	26.2	22.9	-138.26	-539.6	733.9	327.9	285.9	42.01	7.807		
6,700.0	6,592.6	6,667.6	6,592.1	26.4	23.0	-139.04	-540.7	735.3	333.6	291.5	42.10	7.925		
6,800.0	6,692.5	6,766.9	6,691.5	26.6	23.1	-139.70	-540.7	735.3	337.8	295.6	42.18	8.008		
6,900.0	6,792.4	6,867.0	6,791.5	26.7	23.3	-140.00	-540.7	735.0	339.3	297.0	42.32	8.018		
7,000.0	6,892.4	6,966.0	6,889.9	26.8	23.3	-1.51	-540.7	725.0	339.4	296.5	42.95	7.904		
7,100.0	6,992.3	7,061.4	6,982.6	26.9	23.2	85.17	-540.7	702.7	340.6	299.5	41.07	8.294		
7,200.0	7,090.9	7,154.2	7,069.1	26.9	23.1	81.83	-540.7	669.3	342.9	303.0	39.95	8.584		
7,300.0	7,186.3	7,244.8	7,148.8	26.8	22.9	78.71	-540.7	626.3	346.3	307.4	38.82	8.920		
7,400.0	7,276.6	7,333.5	7,220.9	26.6	22.7	75.86	-540.8	574.6	350.2	312.5	37.77	9.274		
7,500.0	7,360.1	7,420.7	7,284.9	26.4	22.5	73.31	-540.8	515.7	354.6	317.7	36.89	9.613		
7,600.0	7,435.1	7,506.4	7,340.6	26.2	22.4	71.10	-540.9	450.5	359.0	322.7	36.28	9.895		
7,700.0	7,500.3	7,591.1	7,387.4	26.0	22.3	69.23	-540.9	380.0	363.2	327.1	36.07	10.068		
7,800.0	7,554.2	7,674.8	7,425.3	25.8	22.3	67.73	-541.0	305.4	366.9	330.5	36.37	10.087		
7,900.0	7,595.9	7,757.9	7,454.0	25.6	22.4	66.58	-541.0	227.5	369.9	332.6	37.24	9.931		
8,000.0	7,624.6	7,840.4	7,473.4	25.5	22.8	65.80	-541.1	147.3	372.0	333.3	38.73	9.606		
8,100.0	7,639.6	7,922.7	7,483.5	25.4	23.3	65.38	-541.2	65.7	373.2	332.4	40.77	9.153		
8,200.0	7,642.0	8,012.5	7,485.0	25.6	24.2	65.31	-541.2	-24.1	373.4	330.2	43.21	8.642		
8,300.0	7,642.0	8,112.5	7,485.0	26.3	25.6	65.31	-541.3	-124.1	373.4	327.5	45.96	8.125		
8,400.0	7,642.0	8,212.5	7,485.0	27.7	27.3	65.31	-541.4	-224.1	373.4	324.3	49.09	7.607		
8,500.0	7,642.0	8,312.5	7,485.0	29.5	29.1	65.31	-541.5	-324.1	373.4	320.9	52.54	7.107		
8,600.0	7,642.0	8,412.5	7,485.0	31.5	31.1	65.30	-541.5	-424.1	373.4	317.1	56.25	6.639		
8,700.0	7,642.0	8,512.5	7,485.0	33.7	33.3	65.30	-541.6	-524.1	373.4	313.2	60.16	6.206		
8,800.0	7,642.0	8,612.5	7,485.0	35.9	35.5	65.30	-541.7	-624.1	373.4	309.1	64.25	5.811		
8,900.0	7,642.0	8,712.5	7,485.0	38.3	37.9	65.30	-541.8	-724.1	373.4	304.9	68.49	5.452		
9,000.0	7,642.0	8,812.5	7,485.0	40.6	40.2	65.30	-541.8	-824.1	373.4	300.5	72.83	5.126		
9,100.0	7,642.0	8,912.5	7,485.0	43.1	42.7	65.30	-541.9	-924.1	373.4	296.1	77.28	4.831		
9,200.0	7,642.0	9,012.5	7,485.0	45.6	45.2	65.30	-542.0	-1,024.1	373.4	291.6	81.80	4.564		
9,300.0	7,642.0	9,112.5	7,485.0	48.1	47.7	65.30	-542.1	-1,124.1	373.3	287.0	86.40	4.321		
9,400.0	7,642.0	9,212.5	7,485.0	50.6	50.2	65.30	-542.1	-1,224.1	373.3	282.3	91.05	4.100		
9,500.0	7,642.0	9,312.5	7,485.0	53.2	52.8	65.30	-542.2	-1,324.1	373.3	277.6	95.75	3.899		
9,600.0	7,642.0	9,412.5	7,485.0	55.8	55.4	65.30	-542.3	-1,424.1	373.3	272.8	100.49	3.715		
9,700.0	7,642.0	9,512.5	7,485.0	58.4	58.0	65.30	-542.4	-1,524.1	373.3	268.0	105.27	3.546		
9,800.0	7,642.0	9,612.5	7,485.0	61.0	60.6	65.30	-542.5	-1,624.1	373.3	263.2	110.09	3.391		
9,900.0	7,642.0	9,712.5	7,485.0	63.6	63.3	65.30	-542.5	-1,724.1	373.3	258.4	114.93	3.248		
10,000.0	7,642.0	9,812.5	7,485.0	66.3	65.9	65.30	-542.6	-1,824.1	373.3	253.5	119.79	3.116		
10,100.0	7,642.0	9,912.5	7,485.0	68.9	68.6	65.30	-542.7	-1,924.1	373.3	248.6	124.68	2.994		

CC - Min centre to center distance or convergent point, SF - min separation factor, ES - min ellipse separation

Company:	Synergy Resources	Local Co-ordinate Reference:	Well SRC Eberle 14-32-31CHZM
Project:	SEC.32-T1N-R66W	TVD Reference:	WELL @ 5046.0ft (RKB - 12')
Reference Site:	SRC Eberle 14-32-31CHZM Pad Sec.32-T1N-R66W	MD Reference:	WELL @ 5046.0ft (RKB - 12')
Site Error:	0.0ft	North Reference:	True
Reference Well:	SRC Eberle 14-32-31CHZM	Survey Calculation Method:	Minimum Curvature
Well Error:	0.0ft	Output errors are at	2.00 sigma
Reference Wellbore	Wellbore #1	Database:	Landmark
Reference Design:	Plan #2 (1-2-14)	Offset TVD Reference:	Offset Datum

Offset Design SRC Eberle 14-32-31CHZM Pad Sec.32-T1N-R66W - SRC Eberle 14-32-31NHZM - Wellbore #1 - Plan													Offset Site Error:	0.0 ft
Survey Program: 0-MWD													Offset Well Error:	0.0 ft
Measured Depth (ft)	Vertical Depth (ft)	Measured Depth (ft)	Vertical Depth (ft)	Reference	Offset	Semi Major Axis	Highside Toolface (°)	Offset Wellbore Centre +N/-S (ft)	Offset Wellbore Centre +E/-W (ft)	Between Centres (ft)	Between Ellipses (ft)	Minimum Separation (ft)	Separation Factor	Warning
10,200.0	7,642.0	10,012.5	7,485.0	71.6	71.3	65.30	65.30	-542.8	-2,024.1	373.3	243.7	129.58	2.881	
10,300.0	7,642.0	10,112.5	7,485.0	74.3	73.9	65.30	65.30	-542.8	-2,124.1	373.3	238.8	134.51	2.775	
10,400.0	7,642.0	10,212.5	7,485.0	77.0	76.6	65.30	65.30	-542.9	-2,224.1	373.3	233.8	139.45	2.677	
10,500.0	7,642.0	10,312.5	7,485.0	79.7	79.3	65.30	65.30	-543.0	-2,324.1	373.3	228.9	144.40	2.585	
10,600.0	7,642.0	10,412.5	7,485.0	82.4	82.1	65.30	65.30	-543.1	-2,424.1	373.3	223.9	149.36	2.499	
10,700.0	7,642.0	10,512.5	7,485.0	85.1	84.8	65.29	65.29	-543.1	-2,524.1	373.3	218.9	154.34	2.418	
10,800.0	7,642.0	10,612.5	7,485.0	87.8	87.5	65.29	65.29	-543.2	-2,624.1	373.2	213.9	159.32	2.343	
10,900.0	7,642.0	10,712.5	7,485.0	90.5	90.2	65.29	65.29	-543.3	-2,724.1	373.2	208.9	164.32	2.271	
11,000.0	7,642.0	10,812.5	7,485.0	93.3	92.9	65.29	65.29	-543.4	-2,824.1	373.2	203.9	169.32	2.204	
11,100.0	7,642.0	10,912.5	7,485.0	96.0	95.7	65.29	65.29	-543.4	-2,924.1	373.2	198.9	174.33	2.141	
11,200.0	7,642.0	11,012.5	7,485.0	98.7	98.4	65.29	65.29	-543.5	-3,024.1	373.2	193.9	179.35	2.081	
11,300.0	7,642.0	11,112.5	7,485.0	101.5	101.2	65.29	65.29	-543.6	-3,124.1	373.2	188.8	184.38	2.024	
11,400.0	7,642.0	11,212.5	7,485.0	104.2	103.9	65.29	65.29	-543.7	-3,224.1	373.2	183.8	189.41	1.970	
11,500.0	7,642.0	11,312.5	7,485.0	106.9	106.7	65.29	65.29	-543.7	-3,324.1	373.2	178.8	194.44	1.919	
11,600.0	7,642.0	11,412.5	7,485.0	109.7	109.4	65.29	65.29	-543.8	-3,424.1	373.2	173.7	199.48	1.871	
11,700.0	7,642.0	11,512.5	7,485.0	112.4	112.2	65.29	65.29	-543.9	-3,524.1	373.2	168.7	204.53	1.825	
11,800.0	7,642.0	11,612.5	7,485.0	115.2	114.9	65.29	65.29	-544.0	-3,624.1	373.2	163.6	209.58	1.781	
11,900.0	7,642.0	11,712.5	7,485.0	118.0	117.7	65.29	65.29	-544.0	-3,724.1	373.2	158.5	214.63	1.739	
12,000.0	7,642.0	11,812.5	7,485.0	120.7	120.4	65.29	65.29	-544.1	-3,824.1	373.2	153.5	219.69	1.699	
12,100.0	7,642.0	11,912.5	7,485.0	123.5	123.2	65.29	65.29	-544.2	-3,924.1	373.2	148.4	224.75	1.660	
12,200.0	7,642.0	12,012.5	7,485.0	126.2	126.0	65.29	65.29	-544.3	-4,024.1	373.1	143.3	229.81	1.624	
12,300.0	7,642.0	12,112.5	7,485.0	129.0	128.7	65.29	65.29	-544.3	-4,124.1	373.1	138.3	234.88	1.589	
12,400.0	7,642.0	12,212.5	7,485.0	131.8	131.5	65.29	65.29	-544.4	-4,224.1	373.1	133.2	239.95	1.555	
12,500.0	7,642.0	12,312.5	7,485.0	134.5	134.3	65.29	65.29	-544.5	-4,324.1	373.1	128.1	245.02	1.523	
12,600.0	7,642.0	12,412.5	7,485.0	137.3	137.0	65.29	65.29	-544.6	-4,424.1	373.1	123.0	250.10	1.492 Level 3	
12,700.0	7,642.0	12,512.5	7,485.0	140.1	139.8	65.29	65.29	-544.6	-4,524.1	373.1	117.9	255.18	1.462 Level 3	
12,800.0	7,642.0	12,612.5	7,485.0	142.8	142.6	65.28	65.28	-544.7	-4,624.1	373.1	112.8	260.26	1.434 Level 3	
12,900.0	7,642.0	12,712.5	7,485.0	145.6	145.4	65.28	65.28	-544.8	-4,724.1	373.1	107.8	265.34	1.406 Level 3	
13,000.0	7,642.0	12,812.5	7,485.0	148.4	148.1	65.28	65.28	-544.9	-4,824.1	373.1	102.7	270.42	1.380 Level 3	
13,100.0	7,642.0	12,912.5	7,485.0	151.2	150.9	65.28	65.28	-545.0	-4,924.1	373.1	97.6	275.51	1.354 Level 3	
13,200.0	7,642.0	13,012.5	7,485.0	153.9	153.7	65.28	65.28	-545.0	-5,024.1	373.1	92.5	280.60	1.330 Level 3	
13,300.0	7,642.0	13,112.5	7,485.0	156.7	156.5	65.28	65.28	-545.1	-5,124.1	373.1	87.4	285.69	1.306 Level 3	
13,400.0	7,642.0	13,212.5	7,485.0	159.5	159.2	65.28	65.28	-545.2	-5,224.1	373.1	82.3	290.78	1.283 Level 3	
13,500.0	7,642.0	13,312.5	7,485.0	162.3	162.0	65.28	65.28	-545.3	-5,324.1	373.1	77.2	295.87	1.261 Level 3	
13,600.0	7,642.0	13,412.5	7,485.0	165.0	164.8	65.28	65.28	-545.3	-5,424.1	373.1	72.1	300.96	1.240 Level 2	
13,700.0	7,642.0	13,512.5	7,485.0	167.8	167.6	65.28	65.28	-545.4	-5,524.1	373.0	67.0	306.06	1.219 Level 2	
13,800.0	7,642.0	13,612.5	7,485.0	170.6	170.4	65.28	65.28	-545.5	-5,624.1	373.0	61.9	311.15	1.199 Level 2	
13,900.0	7,642.0	13,712.5	7,485.0	173.4	173.2	65.28	65.28	-545.6	-5,724.1	373.0	56.8	316.25	1.180 Level 2	
14,000.0	7,642.0	13,812.5	7,485.0	176.2	175.9	65.28	65.28	-545.6	-5,824.1	373.0	51.7	321.35	1.161 Level 2	
14,100.0	7,642.0	13,912.5	7,485.0	178.9	178.7	65.28	65.28	-545.7	-5,924.1	373.0	46.6	326.45	1.143 Level 2	
14,200.0	7,642.0	14,012.5	7,485.0	181.7	181.5	65.28	65.28	-545.8	-6,024.1	373.0	41.5	331.55	1.125 Level 2	
14,300.0	7,642.0	14,112.5	7,485.0	184.5	184.3	65.28	65.28	-545.9	-6,124.1	373.0	36.4	336.65	1.108 Level 2	
14,400.0	7,642.0	14,212.5	7,485.0	187.3	187.1	65.28	65.28	-545.9	-6,224.1	373.0	31.2	341.75	1.091 Level 2	
14,500.0	7,642.0	14,312.5	7,485.0	190.1	189.9	65.28	65.28	-546.0	-6,324.1	373.0	26.1	346.86	1.075 Level 2	
14,600.0	7,642.0	14,412.5	7,485.0	192.9	192.7	65.28	65.28	-546.1	-6,424.1	373.0	21.0	351.96	1.060 Level 2	
14,700.0	7,642.0	14,512.5	7,485.0	195.7	195.4	65.28	65.28	-546.2	-6,524.1	373.0	15.9	357.07	1.045 Level 2	
14,800.0	7,642.0	14,612.5	7,485.0	198.4	198.2	65.27	65.27	-546.2	-6,624.1	373.0	10.8	362.17	1.030 Level 2	
14,828.0	7,642.0	14,640.5	7,485.0	199.2	199.0	65.27	65.27	-546.3	-6,652.1	373.0	9.4	363.60	1.026 Level 2	
14,835.2	7,642.0	14,645.7	7,485.0	199.4	199.2	65.27	65.27	-546.3	-6,657.3	373.0	9.1	363.92	1.025 Level 2, ES, SF	

Company:	Synergy Resources	Local Co-ordinate Reference:	Well SRC Eberle 14-32-31CHZM
Project:	SEC.32-T1N-R66W	TVD Reference:	WELL @ 5046.0ft (RKB - 12')
Reference Site:	SRC Eberle 14-32-31CHZM Pad Sec.32-T1N-R66W	MD Reference:	WELL @ 5046.0ft (RKB - 12')
Site Error:	0.0ft	North Reference:	True
Reference Well:	SRC Eberle 14-32-31CHZM	Survey Calculation Method:	Minimum Curvature
Well Error:	0.0ft	Output errors are at	2.00 sigma
Reference Wellbore	Wellbore #1	Database:	Landmark
Reference Design:	Plan #2 (1-2-14)	Offset TVD Reference:	Offset Datum

Offset Design SRC Eberle 14-32-31CHZM Pad Sec.32-T1N-R66W - SRC Eberle B-32CHZ - Wellbore #1 - Plan #1 (12													Offset Site Error:	0.0 ft
Survey Program: 0-MWD													Offset Well Error:	0.0 ft
Measured Depth (ft)	Vertical Depth (ft)	Measured Depth (ft)	Vertical Depth (ft)	Reference (ft)	Offset (ft)	Highside Toolface (°)	Offset Wellbore Centre +N/-S (ft)	+E/-W (ft)	Between Centres (ft)	Between Ellipses (ft)	Minimum Separation (ft)	Separation Factor	Warning	
0.0	0.0	0.0	0.0	0.0	0.0	-89.80	0.3	-90.8	90.9					
100.0	100.0	96.0	96.0	0.1	0.1	-89.80	0.3	-90.8	90.8	90.5	0.22	412.060		
200.0	200.0	196.0	196.0	0.3	0.3	-89.80	0.3	-90.8	90.8	90.1	0.67	136.430 CC, ES		
300.0	300.0	296.0	296.0	0.5	0.6	130.45	0.3	-90.8	91.3	90.2	1.09	83.458		
400.0	400.0	396.0	396.0	0.7	0.8	131.66	0.3	-90.8	93.1	91.5	1.52	61.133		
500.0	499.9	495.9	495.9	1.0	1.0	133.58	0.3	-90.8	96.0	94.0	1.96	48.863		
600.0	599.7	595.7	595.7	1.2	1.2	136.08	0.3	-90.8	100.3	97.9	2.42	41.498		
700.0	699.4	695.4	695.4	1.5	1.5	138.98	0.3	-90.8	106.1	103.2	2.88	36.878		
800.0	798.9	794.9	794.9	1.7	1.7	142.10	0.3	-90.8	113.5	110.2	3.34	33.963		
900.0	898.3	894.3	894.3	2.0	1.9	145.29	0.3	-90.8	122.7	118.9	3.81	32.186		
1,000.0	997.4	993.4	993.4	2.3	2.1	148.41	0.3	-90.8	133.6	129.4	4.28	31.210		
1,100.0	1,096.3	1,092.3	1,092.3	2.7	2.3	151.37	0.3	-90.8	146.5	141.7	4.75	30.817		
1,200.0	1,194.9	1,190.9	1,190.9	3.0	2.6	154.11	0.3	-90.8	161.2	156.0	5.22	30.861		
1,300.0	1,293.3	1,292.0	1,292.0	3.4	2.8	156.73	0.1	-90.0	177.1	171.4	5.68	31.183		
1,400.0	1,391.3	1,393.6	1,393.6	3.8	3.0	159.24	-0.5	-87.6	192.8	186.7	6.12	31.493		
1,500.0	1,489.4	1,495.7	1,495.6	4.2	3.2	161.55	-1.5	-83.4	207.2	200.7	6.57	31.545		
1,600.0	1,587.5	1,598.2	1,597.8	4.7	3.4	163.71	-3.0	-77.3	220.3	213.2	7.02	31.377		
1,700.0	1,685.6	1,700.9	1,700.3	5.1	3.6	165.81	-4.9	-69.5	231.9	224.4	7.47	31.030		
1,800.0	1,783.6	1,804.0	1,802.9	5.5	3.9	167.88	-7.3	-59.9	242.2	234.2	7.93	30.534		
1,900.0	1,881.7	1,907.3	1,905.5	5.9	4.1	169.96	-10.1	-48.4	251.1	242.7	8.40	29.911		
2,000.0	1,979.8	2,010.6	2,007.9	6.4	4.4	172.09	-13.3	-35.2	258.7	249.9	8.87	29.178		
2,100.0	2,077.9	2,114.1	2,110.2	6.8	4.7	174.29	-17.0	-20.1	265.1	255.8	9.35	28.348		
2,200.0	2,175.9	2,216.7	2,211.4	7.2	5.0	176.57	-21.1	-3.4	270.4	260.6	9.85	27.444		
2,300.0	2,274.0	2,316.0	2,309.2	7.7	5.3	178.76	-25.2	13.3	275.6	265.2	10.37	26.586		
2,400.0	2,372.1	2,415.3	2,407.0	8.1	5.7	-179.13	-29.3	30.0	281.2	270.3	10.90	25.800		
2,500.0	2,470.1	2,514.7	2,504.8	8.6	6.0	-177.11	-33.4	46.7	287.1	275.7	11.45	25.076		
2,600.0	2,568.2	2,614.0	2,602.6	9.0	6.3	-175.17	-37.5	63.4	293.4	281.4	12.02	24.406		
2,700.0	2,666.3	2,713.3	2,700.5	9.4	6.7	-173.31	-41.6	80.1	300.0	287.4	12.61	23.786		
2,800.0	2,764.4	2,812.6	2,798.3	9.9	7.0	-171.54	-45.7	96.8	306.9	293.7	13.22	23.211		
2,900.0	2,862.4	2,911.9	2,896.1	10.3	7.4	-169.84	-49.8	113.5	314.1	300.3	13.85	22.676		
3,000.0	2,960.5	3,011.2	2,993.9	10.8	7.8	-168.22	-53.8	130.2	321.6	307.1	14.50	22.180		
3,100.0	3,058.6	3,110.5	3,091.7	11.2	8.1	-166.67	-57.9	146.9	329.3	314.1	15.16	21.720		
3,200.0	3,156.7	3,209.9	3,189.5	11.6	8.5	-165.20	-62.0	163.6	337.2	321.4	15.84	21.292		
3,300.0	3,254.7	3,309.2	3,287.4	12.1	8.9	-163.79	-66.1	180.3	345.4	328.8	16.53	20.895		
3,400.0	3,352.8	3,408.5	3,385.2	12.5	9.3	-162.45	-70.2	197.0	353.7	336.5	17.23	20.526		
3,500.0	3,450.9	3,507.8	3,483.0	13.0	9.6	-161.17	-74.3	213.7	362.3	344.3	17.95	20.183		
3,600.0	3,548.9	3,607.1	3,580.8	13.4	10.0	-159.95	-78.4	230.3	371.0	352.3	18.67	19.864		
3,700.0	3,647.0	3,706.4	3,678.6	13.8	10.4	-158.79	-82.5	247.0	379.8	360.4	19.41	19.569		
3,800.0	3,745.1	3,805.7	3,776.4	14.3	10.8	-157.68	-86.6	263.7	388.8	368.7	20.15	19.294		
3,900.0	3,843.2	3,905.1	3,874.2	14.7	11.2	-156.62	-90.7	280.4	398.0	377.1	20.90	19.038		
4,000.0	3,941.2	4,004.4	3,972.1	15.2	11.5	-155.61	-94.8	297.1	407.3	385.6	21.66	18.800		
4,100.0	4,039.3	4,103.7	4,069.9	15.6	11.9	-154.64	-98.9	313.8	416.7	394.2	22.43	18.579		
4,200.0	4,137.4	4,203.0	4,167.7	16.0	12.3	-153.71	-103.0	330.5	426.2	403.0	23.20	18.372		
4,300.0	4,235.5	4,302.3	4,265.5	16.5	12.7	-152.83	-107.1	347.2	435.8	411.8	23.97	18.180		
4,400.0	4,333.5	4,401.6	4,363.3	16.9	13.1	-151.98	-111.2	363.9	445.5	420.8	24.75	18.000		
4,500.0	4,431.6	4,500.9	4,461.1	17.4	13.5	-151.17	-115.3	380.6	455.3	429.8	25.53	17.833		
4,600.0	4,529.7	4,600.3	4,559.0	17.8	13.9	-150.40	-119.3	397.3	465.2	438.9	26.32	17.676		
4,700.0	4,627.7	4,699.6	4,656.8	18.3	14.3	-149.66	-123.4	414.0	475.2	448.1	27.11	17.529		
4,800.0	4,725.8	4,798.9	4,754.6	18.7	14.7	-148.94	-127.5	430.7	485.3	457.4	27.90	17.392		
4,900.0	4,823.9	4,898.2	4,852.4	19.1	15.0	-148.26	-131.6	447.4	495.4	466.7	28.70	17.264		
5,000.0	4,922.0	4,997.5	4,950.2	19.6	15.4	-147.60	-135.7	464.1	505.6	476.1	29.49	17.143		

CC - Min centre to center distance or convergent point, SF - min separation factor, ES - min ellipse separation

Company:	Synergy Resources	Local Co-ordinate Reference:	Well SRC Eberle 14-32-31CHZM
Project:	SEC.32-T1N-R66W	TVD Reference:	WELL @ 5046.0ft (RKB - 12')
Reference Site:	SRC Eberle 14-32-31CHZM Pad Sec.32-T1N-R66W	MD Reference:	WELL @ 5046.0ft (RKB - 12')
Site Error:	0.0ft	North Reference:	True
Reference Well:	SRC Eberle 14-32-31CHZM	Survey Calculation Method:	Minimum Curvature
Well Error:	0.0ft	Output errors are at	2.00 sigma
Reference Wellbore	Wellbore #1	Database:	Landmark
Reference Design:	Plan #2 (1-2-14)	Offset TVD Reference:	Offset Datum

Offset Design SRC Eberle 14-32-31CHZM Pad Sec.32-T1N-R66W - SRC Eberle B-32CHZ - Wellbore #1 - Plan #1 (12													Offset Site Error:	0.0 ft
Survey Program: 0-MWD													Offset Well Error:	0.0 ft
Measured Depth (ft)	Vertical Depth (ft)	Measured Depth (ft)	Vertical Depth (ft)	Reference	Offset	Highside Toolface (°)	Offset Wellbore Centre +N/-S (ft)	Offset Wellbore Centre +E/-W (ft)	Between Centres (ft)	Between Ellipses (ft)	Minimum Separation (ft)	Separation Factor	Warning	
5,100.0	5,020.0	5,096.8	5,048.0	20.0	15.8	-146.97	-139.8	480.8	515.9	485.6	30.29	17.030		
5,200.0	5,118.1	5,196.1	5,145.8	20.5	16.2	-146.37	-143.9	497.5	526.2	495.1	31.09	16.923		
5,300.0	5,216.2	5,295.5	5,243.7	20.9	16.6	-145.78	-148.0	514.2	536.6	504.7	31.89	16.823		
5,400.0	5,314.3	5,394.8	5,341.5	21.3	17.0	-145.22	-152.1	530.9	547.0	514.3	32.70	16.729		
5,500.0	5,412.3	5,494.1	5,439.3	21.8	17.4	-144.68	-156.2	547.6	557.5	524.0	33.50	16.640		
5,600.0	5,510.4	5,593.4	5,537.1	22.2	17.8	-144.16	-160.3	564.3	568.0	533.7	34.31	16.556		
5,700.0	5,608.5	5,692.7	5,634.9	22.7	18.2	-143.66	-164.4	581.0	578.6	543.4	35.11	16.477		
5,800.0	5,706.5	5,792.0	5,732.7	23.1	18.6	-143.18	-168.5	597.7	589.2	553.2	35.92	16.402		
5,900.0	5,804.6	5,891.4	5,830.6	23.6	19.0	-142.72	-172.6	614.4	599.8	563.1	36.73	16.331		
6,000.0	5,902.7	5,990.7	5,928.4	24.0	19.4	-142.27	-176.7	631.1	610.5	573.0	37.54	16.264		
6,100.0	6,000.8	6,090.0	6,026.2	24.4	19.8	-141.83	-180.8	647.8	621.2	582.9	38.35	16.201		
6,200.0	6,098.8	6,189.3	6,124.0	24.9	20.2	-141.41	-184.8	664.5	632.0	592.8	39.16	16.141		
6,300.0	6,196.9	6,288.6	6,221.8	25.3	20.5	-141.01	-188.9	681.2	642.8	602.8	39.96	16.084		
6,400.0	6,295.1	6,387.1	6,318.8	25.7	20.9	-140.66	-193.0	697.7	653.2	612.4	40.76	16.025		
6,500.0	6,393.8	6,481.2	6,411.9	26.0	21.2	-140.39	-196.4	711.6	661.8	620.4	41.37	15.997		
6,600.0	6,493.0	6,575.6	6,505.6	26.2	21.4	-140.18	-199.1	722.5	668.5	626.6	41.88	15.960		
6,700.0	6,592.6	6,670.2	6,599.8	26.4	21.6	-140.03	-201.0	730.4	673.3	631.0	42.31	15.914		
6,800.0	6,692.5	6,764.9	6,694.3	26.6	21.8	-139.94	-202.2	735.3	676.3	633.6	42.65	15.857		
6,900.0	6,792.4	6,859.6	6,789.0	26.7	21.9	-139.90	-202.7	737.2	677.3	634.4	42.91	15.784		
7,000.0	6,892.4	6,959.0	6,888.4	26.8	22.1	0.27	-202.7	737.2	677.3	637.5	39.83	17.005		
7,100.0	6,992.3	7,059.4	6,988.7	26.9	22.2	90.34	-202.7	734.5	677.3	633.9	43.40	15.608		
7,200.0	7,090.9	7,160.0	7,088.0	26.9	22.1	90.38	-202.7	718.6	677.3	634.0	43.36	15.621		
7,300.0	7,186.3	7,260.7	7,184.2	26.8	22.0	90.41	-202.7	689.0	677.3	634.2	43.11	15.711		
7,400.0	7,276.6	7,361.4	7,275.3	26.6	21.8	90.44	-202.8	646.2	677.3	634.6	42.72	15.854		
7,500.0	7,360.1	7,462.2	7,359.5	26.4	21.6	90.45	-202.8	591.0	677.3	635.0	42.29	16.015		
7,600.0	7,435.1	7,563.0	7,435.1	26.2	21.4	90.46	-202.9	524.5	677.3	635.3	41.95	16.143		
7,700.0	7,500.3	7,663.8	7,500.7	26.0	21.4	90.46	-203.0	448.1	677.2	635.4	41.87	16.176		
7,800.0	7,554.2	7,764.6	7,554.9	25.8	21.5	90.45	-203.1	363.3	677.2	635.0	42.19	16.053		
7,900.0	7,595.9	7,865.3	7,596.7	25.6	21.9	90.43	-203.2	271.7	677.2	634.1	43.04	15.733		
8,000.0	7,624.6	7,966.0	7,625.2	25.5	22.5	90.40	-203.3	175.2	677.1	632.6	44.49	15.220		
8,100.0	7,639.6	8,066.6	7,639.9	25.4	23.5	90.36	-203.4	75.7	677.1	630.6	46.51	14.558		
8,200.0	7,642.0	8,167.0	7,642.0	25.6	24.7	90.34	-203.5	-24.5	677.0	628.0	49.03	13.809		
8,300.0	7,642.0	8,267.0	7,642.0	26.3	26.1	90.34	-203.6	-124.5	677.0	625.0	52.01	13.017		
8,400.0	7,642.0	8,367.0	7,642.0	27.7	27.8	90.34	-203.7	-224.5	677.0	621.6	55.39	12.221		
8,500.0	7,642.0	8,467.0	7,642.0	29.5	29.6	90.34	-203.8	-324.5	676.9	617.8	59.11	11.451		
8,600.0	7,642.0	8,567.0	7,642.0	31.5	31.6	90.34	-203.9	-424.5	676.9	613.8	63.11	10.725		
8,700.0	7,642.0	8,667.0	7,642.0	33.7	33.7	90.34	-204.0	-524.5	676.9	609.5	67.34	10.051		
8,800.0	7,642.0	8,767.0	7,642.0	35.9	35.9	90.34	-204.1	-624.5	676.8	605.0	71.77	9.431		
8,900.0	7,642.0	8,867.0	7,642.0	38.3	38.2	90.34	-204.2	-724.5	676.8	600.4	76.34	8.865		
9,000.0	7,642.0	8,967.0	7,642.0	40.6	40.5	90.34	-204.3	-824.5	676.7	595.7	81.05	8.350		
9,100.0	7,642.0	9,067.0	7,642.0	43.1	42.9	90.34	-204.4	-924.5	676.7	590.8	85.86	7.881		
9,200.0	7,642.0	9,167.0	7,642.0	45.6	45.4	90.34	-204.5	-1,024.5	676.7	585.9	90.77	7.455		
9,300.0	7,642.0	9,267.0	7,642.0	48.1	47.8	90.34	-204.7	-1,124.5	676.6	580.9	95.75	7.066		
9,400.0	7,642.0	9,367.0	7,642.0	50.6	50.4	90.34	-204.8	-1,224.5	676.6	575.8	100.80	6.712		
9,500.0	7,642.0	9,467.0	7,642.0	53.2	52.9	90.34	-204.9	-1,324.5	676.5	570.6	105.91	6.388		
9,600.0	7,642.0	9,567.0	7,642.0	55.8	55.5	90.34	-205.0	-1,424.5	676.5	565.5	111.06	6.091		
9,700.0	7,642.0	9,667.0	7,642.0	58.4	58.1	90.34	-205.1	-1,524.5	676.5	560.2	116.26	5.819		
9,800.0	7,642.0	9,767.0	7,642.0	61.0	60.7	90.34	-205.2	-1,624.5	676.4	554.9	121.49	5.568		
9,900.0	7,642.0	9,867.0	7,642.0	63.6	63.3	90.34	-205.3	-1,724.5	676.4	549.6	126.75	5.336		
10,000.0	7,642.0	9,967.0	7,642.0	66.3	66.0	90.34	-205.4	-1,824.5	676.4	544.3	132.04	5.122		
10,100.0	7,642.0	10,067.0	7,642.0	68.9	68.6	90.34	-205.5	-1,924.5	676.3	539.0	137.36	4.924		

CC - Min centre to center distance or convergent point, SF - min separation factor, ES - min ellipse separation

Offset Design SRC Eberle 14-32-31CHZM Pad Sec.32-T1N-R66W - SRC Eberle B-32CHZ - Wellbore #1 - Plan #1 (12												Offset Site Error:	0.0 ft
Survey Program: 0-MWD												Offset Well Error:	0.0 ft
Reference		Offset		Semi Major Axis			Distance						
Measured Depth	Vertical Depth	Measured Depth	Vertical Depth	Reference	Offset	Highside Toolface	Offset Wellbore Centre		Between Centres	Between Ellipses	Minimum Separation	Separation Factor	Warning
(ft)	(ft)	(ft)	(ft)	(ft)	(ft)	(°)	+N/-S (ft)	+E/-W (ft)	(ft)	(ft)	(ft)		
10,200.0	7,642.0	10,167.0	7,642.0	71.6	71.3	90.34	-205.6	-2,024.5	676.3	533.6	142.70	4.739	
10,300.0	7,642.0	10,267.0	7,642.0	74.3	74.0	90.34	-205.7	-2,124.5	676.2	528.2	148.06	4.567	
10,400.0	7,642.0	10,367.0	7,642.0	77.0	76.6	90.34	-205.8	-2,224.5	676.2	522.8	153.44	4.407	
10,500.0	7,642.0	10,467.0	7,642.0	79.7	79.3	90.34	-205.9	-2,324.5	676.2	517.3	158.83	4.257	
10,600.0	7,642.0	10,567.0	7,642.0	82.4	82.0	90.34	-206.0	-2,424.5	676.1	511.9	164.24	4.117	
10,700.0	7,642.0	10,667.0	7,642.0	85.1	84.8	90.34	-206.1	-2,524.5	676.1	506.4	169.66	3.985	
10,800.0	7,642.0	10,767.0	7,642.0	87.8	87.5	90.34	-206.2	-2,624.5	676.1	501.0	175.10	3.861	
10,900.0	7,642.0	10,867.0	7,642.0	90.5	90.2	90.34	-206.3	-2,724.5	676.0	495.5	180.54	3.744	
11,000.0	7,642.0	10,967.0	7,642.0	93.3	92.9	90.34	-206.5	-2,824.5	676.0	490.0	185.99	3.634	
11,100.0	7,642.0	11,067.0	7,642.0	96.0	95.6	90.34	-206.6	-2,924.5	675.9	484.5	191.45	3.531	
11,200.0	7,642.0	11,167.0	7,642.0	98.7	98.4	90.34	-206.7	-3,024.5	675.9	479.0	196.92	3.432	
11,300.0	7,642.0	11,267.0	7,642.0	101.5	101.1	90.34	-206.8	-3,124.5	675.9	473.5	202.40	3.339	
11,400.0	7,642.0	11,367.0	7,642.0	104.2	103.9	90.34	-206.9	-3,224.5	675.8	467.9	207.89	3.251	
11,500.0	7,642.0	11,467.0	7,642.0	106.9	106.6	90.34	-207.0	-3,324.5	675.8	462.4	213.38	3.167	
11,600.0	7,642.0	11,567.0	7,642.0	109.7	109.4	90.34	-207.1	-3,424.5	675.8	456.9	218.88	3.087	
11,700.0	7,642.0	11,667.0	7,642.0	112.4	112.1	90.34	-207.2	-3,524.5	675.7	451.3	224.38	3.012	
11,800.0	7,642.0	11,767.0	7,642.0	115.2	114.9	90.34	-207.3	-3,624.5	675.7	445.8	229.89	2.939	
11,900.0	7,642.0	11,867.0	7,642.0	118.0	117.6	90.34	-207.4	-3,724.5	675.6	440.2	235.40	2.870	
12,000.0	7,642.0	11,967.0	7,642.0	120.7	120.4	90.34	-207.5	-3,824.5	675.6	434.7	240.91	2.804	
12,100.0	7,642.0	12,067.0	7,642.0	123.5	123.1	90.34	-207.6	-3,924.5	675.6	429.1	246.44	2.741	
12,154.5	7,642.0	12,121.5	7,642.0	125.0	124.6	90.34	-207.7	-3,979.1	675.5	426.1	249.45	2.708	
12,200.0	7,642.0	12,132.0	7,642.0	126.2	124.9	90.34	-207.7	-3,989.6	676.4	425.4	251.00	2.695 SF	
12,300.0	7,642.0	12,132.0	7,642.0	129.0	124.9	90.34	-207.7	-3,989.6	688.8	435.1	253.76	2.715	
12,400.0	7,642.0	12,132.0	7,642.0	131.8	124.9	90.34	-207.7	-3,989.6	715.1	458.6	256.53	2.788	
12,500.0	7,642.0	12,132.0	7,642.0	134.5	124.9	90.34	-207.7	-3,989.6	753.9	494.6	259.29	2.908	
12,600.0	7,642.0	12,132.0	7,642.0	137.3	124.9	90.34	-207.7	-3,989.6	803.3	541.2	262.06	3.065	
12,700.0	7,642.0	12,132.0	7,642.0	140.1	124.9	90.34	-207.7	-3,989.6	861.5	596.7	264.84	3.253	
12,800.0	7,642.0	12,132.0	7,642.0	142.8	124.9	90.34	-207.7	-3,989.6	926.9	659.3	267.61	3.464	
12,900.0	7,642.0	12,132.0	7,642.0	145.6	124.9	90.34	-207.7	-3,989.6	998.1	727.7	270.38	3.691	
13,000.0	7,642.0	12,132.0	7,642.0	148.4	124.9	90.34	-207.7	-3,989.6	1,073.8	800.7	273.16	3.931	
13,100.0	7,642.0	12,132.0	7,642.0	151.2	124.9	90.34	-207.7	-3,989.6	1,153.3	877.3	275.93	4.180	
13,200.0	7,642.0	12,132.0	7,642.0	153.9	124.9	90.34	-207.7	-3,989.6	1,235.7	957.0	278.71	4.434	
13,300.0	7,642.0	12,132.0	7,642.0	156.7	124.9	90.34	-207.7	-3,989.6	1,320.6	1,039.1	281.49	4.691	
13,400.0	7,642.0	12,132.0	7,642.0	159.5	124.9	90.34	-207.7	-3,989.6	1,407.4	1,123.2	284.26	4.951	
13,500.0	7,642.0	12,132.0	7,642.0	162.3	124.9	90.34	-207.7	-3,989.6	1,495.9	1,208.9	287.04	5.211	
13,600.0	7,642.0	12,132.0	7,642.0	165.0	124.9	90.34	-207.7	-3,989.6	1,585.8	1,296.0	289.82	5.472	
13,700.0	7,642.0	12,132.0	7,642.0	167.8	124.9	90.34	-207.7	-3,989.6	1,676.8	1,384.2	292.60	5.731	
13,800.0	7,642.0	12,132.0	7,642.0	170.6	124.9	90.34	-207.7	-3,989.6	1,768.8	1,473.4	295.39	5.988	
13,900.0	7,642.0	12,132.0	7,642.0	173.4	124.9	90.34	-207.7	-3,989.6	1,861.6	1,563.4	298.17	6.243	
14,000.0	7,642.0	12,132.0	7,642.0	176.2	124.9	90.34	-207.7	-3,989.6	1,955.1	1,654.2	300.95	6.496	
14,100.0	7,642.0	12,132.0	7,642.0	178.9	124.9	90.34	-207.7	-3,989.6	2,049.2	1,745.5	303.74	6.747	
14,200.0	7,642.0	12,132.0	7,642.0	181.7	124.9	90.34	-207.7	-3,989.6	2,143.9	1,837.4	306.52	6.994	
14,300.0	7,642.0	12,132.0	7,642.0	184.5	124.9	90.34	-207.7	-3,989.6	2,239.0	1,929.7	309.31	7.239	
14,400.0	7,642.0	12,132.0	7,642.0	187.3	124.9	90.34	-207.7	-3,989.6	2,334.6	2,022.5	312.09	7.480	
14,500.0	7,642.0	12,132.0	7,642.0	190.1	124.9	90.34	-207.7	-3,989.6	2,430.5	2,115.6	314.88	7.719	
14,600.0	7,642.0	12,132.0	7,642.0	192.9	124.9	90.34	-207.7	-3,989.6	2,526.7	2,209.0	317.66	7.954	
14,700.0	7,642.0	12,132.0	7,642.0	195.7	124.9	90.34	-207.7	-3,989.6	2,623.2	2,302.7	320.45	8.186	
14,800.0	7,642.0	12,132.0	7,642.0	198.4	124.9	90.34	-207.7	-3,989.6	2,719.9	2,396.7	323.24	8.415	
14,835.2	7,642.0	12,132.0	7,642.0	199.4	124.9	90.34	-207.7	-3,989.6	2,754.0	2,429.8	324.22	8.494	

Company:	Synergy Resources	Local Co-ordinate Reference:	Well SRC Eberle 14-32-31CHZM
Project:	SEC.32-T1N-R66W	TVD Reference:	WELL @ 5046.0ft (RKB - 12')
Reference Site:	SRC Eberle 14-32-31CHZM Pad Sec.32-T1N-R66W	MD Reference:	WELL @ 5046.0ft (RKB - 12')
Site Error:	0.0ft	North Reference:	True
Reference Well:	SRC Eberle 14-32-31CHZM	Survey Calculation Method:	Minimum Curvature
Well Error:	0.0ft	Output errors are at	2.00 sigma
Reference Wellbore	Wellbore #1	Database:	Landmark
Reference Design:	Plan #2 (1-2-14)	Offset TVD Reference:	Offset Datum

Offset Design SRC Eberle 14-32-31CHZM Pad Sec.32-T1N-R66W - SRC Eberle B-32NHZ - Wellbore #1 - Plan #1 (12													Offset Site Error:	0.0 ft
Survey Program: 0-MWD													Offset Well Error:	0.0 ft
Measured Depth (ft)	Vertical Depth (ft)	Measured Depth (ft)	Vertical Depth (ft)	Reference	Offset	Semi Major Axis	Highside Toolface (°)	Offset Wellbore Centre +N/-S (ft)	Offset Wellbore Centre +E/-W (ft)	Distance Between Centres (ft)	Distance Between Ellipses (ft)	Minimum Separation (ft)	Separation Factor	Warning
0.0	0.0	0.0	0.0	0.0	0.0	-89.81	-89.81	0.4	-113.5	113.6				
100.0	100.0	95.0	95.0	0.1	0.1	-89.81	-89.81	0.4	-113.5	113.5	113.2	0.22	517.711	
200.0	200.0	195.0	195.0	0.3	0.3	-89.81	-89.81	0.4	-113.5	113.5	112.8	0.66	171.116 CC, ES	
300.0	300.0	295.0	295.0	0.5	0.6	130.35	130.35	0.4	-113.5	114.0	112.9	1.09	104.408	
400.0	400.0	395.0	395.0	0.7	0.8	131.32	131.32	0.4	-113.5	115.7	114.2	1.52	76.148	
500.0	499.9	494.9	494.9	1.0	1.0	132.88	132.88	0.4	-113.5	118.7	116.7	1.96	60.460	
600.0	599.7	594.7	594.7	1.2	1.2	134.94	134.94	0.4	-113.5	122.9	120.5	2.42	50.878	
700.0	699.4	694.4	694.4	1.5	1.4	137.37	137.37	0.4	-113.5	128.6	125.7	2.88	44.695	
800.0	798.9	793.9	793.9	1.7	1.7	140.06	140.06	0.4	-113.5	135.8	132.4	3.34	40.608	
900.0	898.3	893.3	893.3	2.0	1.9	142.88	142.88	0.4	-113.5	144.7	140.9	3.82	37.914	
1,000.0	997.4	992.4	992.4	2.3	2.1	145.72	145.72	0.4	-113.5	155.3	151.0	4.29	36.197	
1,100.0	1,096.3	1,091.3	1,091.3	2.7	2.3	148.49	148.49	0.4	-113.5	167.8	163.0	4.77	35.196	
1,200.0	1,194.9	1,189.9	1,189.9	3.0	2.6	151.13	151.13	0.4	-113.5	182.1	176.8	5.24	34.732	
1,300.0	1,293.3	1,288.3	1,288.3	3.4	2.8	153.59	153.59	0.4	-113.5	198.3	192.6	5.72	34.678	
1,400.0	1,391.3	1,386.3	1,386.3	3.8	3.0	155.86	155.86	0.4	-113.5	216.0	209.8	6.20	34.857	
1,500.0	1,489.4	1,487.2	1,487.2	4.2	3.2	157.96	157.96	0.5	-112.8	233.5	226.8	6.67	35.026	
1,600.0	1,587.5	1,588.9	1,588.8	4.7	3.4	160.04	160.04	0.9	-110.4	249.9	242.8	7.12	35.096	
1,700.0	1,685.6	1,690.8	1,690.6	5.1	3.6	162.12	162.12	1.5	-106.2	265.3	257.7	7.57	35.031	
1,800.0	1,783.6	1,792.8	1,792.5	5.5	3.9	164.22	164.22	2.5	-100.2	279.7	271.6	8.02	34.849	
1,900.0	1,881.7	1,895.0	1,894.4	5.9	4.1	166.36	166.36	3.7	-92.4	293.1	284.7	8.48	34.572	
2,000.0	1,979.8	1,997.3	1,996.2	6.4	4.3	168.56	168.56	5.3	-82.7	305.8	296.8	8.94	34.212	
2,100.0	2,077.9	2,099.5	2,097.8	6.8	4.6	170.84	170.84	7.1	-71.3	317.6	308.2	9.40	33.778	
2,200.0	2,175.9	2,201.7	2,199.1	7.2	4.8	173.19	173.19	9.2	-58.2	328.9	319.0	9.88	33.275	
2,300.0	2,274.0	2,303.7	2,299.9	7.7	5.1	175.62	175.62	11.6	-43.2	339.6	329.2	10.38	32.706	
2,400.0	2,372.1	2,405.5	2,400.4	8.1	5.4	178.14	178.14	14.2	-26.6	349.8	338.9	10.91	32.075	
2,500.0	2,470.1	2,507.1	2,500.2	8.6	5.8	-179.24	-179.24	17.2	-8.2	359.8	348.4	11.46	31.387	
2,600.0	2,568.2	2,605.6	2,596.9	9.0	6.1	-176.70	-176.70	20.2	10.7	370.0	357.9	12.05	30.705	
2,700.0	2,666.3	2,703.8	2,693.1	9.4	6.4	-174.31	-174.31	23.2	29.5	380.8	368.2	12.66	30.073	
2,800.0	2,764.4	2,801.9	2,789.4	9.9	6.8	-172.04	-172.04	26.2	48.4	392.3	379.0	13.30	29.487	
2,900.0	2,862.4	2,900.1	2,885.7	10.3	7.2	-169.91	-169.91	29.2	67.2	404.4	390.4	13.97	28.945	
3,000.0	2,960.5	2,998.2	2,982.0	10.8	7.5	-167.90	-167.90	32.2	86.0	417.0	402.3	14.66	28.446	
3,100.0	3,058.6	3,096.3	3,078.3	11.2	7.9	-166.01	-166.01	35.2	104.8	430.0	414.7	15.37	27.987	
3,200.0	3,156.7	3,194.5	3,174.5	11.6	8.3	-164.22	-164.22	38.2	123.7	443.6	427.5	16.09	27.567	
3,300.0	3,254.7	3,292.6	3,270.8	12.1	8.7	-162.55	-162.55	41.2	142.5	457.5	440.7	16.83	27.183	
3,400.0	3,352.8	3,390.8	3,367.1	12.5	9.0	-160.97	-160.97	44.2	161.3	471.8	454.2	17.58	26.833	
3,500.0	3,450.9	3,488.9	3,463.4	13.0	9.4	-159.48	-159.48	47.2	180.1	486.4	468.1	18.34	26.515	
3,600.0	3,548.9	3,587.1	3,559.6	13.4	9.8	-158.08	-158.08	50.2	199.0	501.3	482.2	19.12	26.225	
3,700.0	3,647.0	3,685.2	3,655.9	13.8	10.2	-156.77	-156.77	53.2	217.8	516.6	496.7	19.90	25.961	
3,800.0	3,745.1	3,783.4	3,752.2	14.3	10.6	-155.52	-155.52	56.3	236.6	532.0	511.3	20.68	25.722	
3,900.0	3,843.2	3,881.5	3,848.5	14.7	11.0	-154.35	-154.35	59.3	255.4	547.7	526.3	21.48	25.505	
4,000.0	3,941.2	3,979.7	3,944.7	15.2	11.4	-153.24	-153.24	62.3	274.3	563.6	541.4	22.27	25.307	
4,100.0	4,039.3	4,077.8	4,041.0	15.6	11.8	-152.19	-152.19	65.3	293.1	579.8	556.7	23.07	25.128	
4,200.0	4,137.4	4,176.0	4,137.3	16.0	12.2	-151.20	-151.20	68.3	311.9	596.1	572.2	23.88	24.965	
4,300.0	4,235.5	4,274.1	4,233.6	16.5	12.7	-150.26	-150.26	71.3	330.7	612.5	587.8	24.68	24.817	
4,400.0	4,333.5	4,372.2	4,329.8	16.9	13.1	-149.37	-149.37	74.3	349.6	629.1	603.6	25.49	24.682	
4,500.0	4,431.6	4,470.4	4,426.1	17.4	13.5	-148.53	-148.53	77.3	368.4	645.9	619.6	26.30	24.559	
4,600.0	4,529.7	4,568.5	4,522.4	17.8	13.9	-147.73	-147.73	80.3	387.2	662.8	635.7	27.11	24.448	
4,700.0	4,627.7	4,666.7	4,618.7	18.3	14.3	-146.96	-146.96	83.3	406.1	679.8	651.9	27.92	24.346	
4,800.0	4,725.8	4,764.8	4,715.0	18.7	14.7	-146.24	-146.24	86.3	424.9	696.9	668.2	28.73	24.253	
4,900.0	4,823.9	4,863.0	4,811.2	19.1	15.1	-145.55	-145.55	89.3	443.7	714.1	684.6	29.55	24.169	
5,000.0	4,922.0	4,961.1	4,907.5	19.6	15.5	-144.89	-144.89	92.3	462.5	731.5	701.1	30.36	24.091	

CC - Min centre to center distance or convergent point, SF - min separation factor, ES - min ellipse separation

Company:	Synergy Resources	Local Co-ordinate Reference:	Well SRC Eberle 14-32-31CHZM
Project:	SEC.32-T1N-R66W	TVD Reference:	WELL @ 5046.0ft (RKB - 12')
Reference Site:	SRC Eberle 14-32-31CHZM Pad Sec.32-T1N-R66W	MD Reference:	WELL @ 5046.0ft (RKB - 12')
Site Error:	0.0ft	North Reference:	True
Reference Well:	SRC Eberle 14-32-31CHZM	Survey Calculation Method:	Minimum Curvature
Well Error:	0.0ft	Output errors are at	2.00 sigma
Reference Wellbore	Wellbore #1	Database:	Landmark
Reference Design:	Plan #2 (1-2-14)	Offset TVD Reference:	Offset Datum

Offset Design SRC Eberle 14-32-31CHZM Pad Sec.32-T1N-R66W - SRC Eberle B-32NHZ - Wellbore #1 - Plan #1 (12													Offset Site Error:	0.0 ft
Survey Program: 0-MWD													Offset Well Error:	0.0 ft
Measured Depth (ft)	Vertical Depth (ft)	Measured Depth (ft)	Vertical Depth (ft)	Reference	Offset	Semi Major Axis Highside Toolface (°)	Offset Wellbore Centre +N/-S (ft)	+E/-W (ft)	Between Centres (ft)	Between Ellipses (ft)	Minimum Separation (ft)	Separation Factor	Warning	
5,100.0	5,020.0	5,059.3	5,003.8	20.0	15.9	-144.26	95.3	481.4	748.9	717.7	31.18	24.021		
5,200.0	5,118.1	5,157.4	5,100.1	20.5	16.4	-143.66	98.3	500.2	766.4	734.4	31.99	23.956		
5,300.0	5,216.2	5,255.6	5,196.3	20.9	16.8	-143.09	101.3	519.0	783.9	751.1	32.80	23.897		
5,400.0	5,314.3	5,353.7	5,292.6	21.3	17.2	-142.54	104.3	537.8	801.6	768.0	33.62	23.844		
5,500.0	5,412.3	5,451.9	5,388.9	21.8	17.6	-142.02	107.3	556.7	819.3	784.9	34.43	23.794		
5,600.0	5,510.4	5,550.0	5,485.2	22.2	18.0	-141.51	110.3	575.5	837.1	801.8	35.25	23.749		
5,700.0	5,608.5	5,648.1	5,581.4	22.7	18.4	-141.03	113.3	594.3	854.9	818.8	36.06	23.708		
5,800.0	5,706.5	5,746.3	5,677.7	23.1	18.9	-140.57	116.4	613.1	872.8	835.9	36.87	23.670		
5,900.0	5,804.6	5,844.4	5,774.0	23.6	19.3	-140.13	119.4	632.0	890.7	853.1	37.69	23.635		
6,000.0	5,902.7	5,942.6	5,870.3	24.0	19.7	-139.70	122.4	650.8	908.7	870.2	38.50	23.604		
6,100.0	6,000.8	6,040.7	5,966.6	24.4	20.1	-139.29	125.4	669.6	926.8	887.5	39.31	23.575		
6,200.0	6,098.8	6,140.0	6,064.0	24.9	20.5	-138.90	128.4	688.6	944.9	904.7	40.12	23.553		
6,300.0	6,196.9	6,244.3	6,166.8	25.3	20.9	-138.65	131.2	706.0	962.6	921.7	40.83	23.574		
6,400.0	6,295.1	6,349.1	6,270.6	25.7	21.1	-138.74	133.4	719.8	979.2	937.8	41.46	23.620		
6,500.0	6,393.8	6,454.4	6,375.4	26.0	21.4	-138.98	135.0	729.8	992.9	951.0	41.96	23.662		
6,600.0	6,493.0	6,560.1	6,480.9	26.2	21.6	-139.25	136.0	736.1	1,003.4	961.0	42.38	23.676		
6,700.0	6,592.6	6,666.1	6,586.8	26.4	21.7	-139.56	136.4	738.5	1,010.6	967.9	42.71	23.665		
6,800.0	6,692.5	6,766.7	6,687.5	26.6	21.9	-139.82	136.4	738.5	1,014.8	971.9	42.98	23.613		
6,900.0	6,792.4	6,866.8	6,787.6	26.7	22.0	-139.93	136.4	738.2	1,016.4	973.1	43.23	23.512		
6,986.1	6,878.6	6,952.8	6,873.2	26.8	22.0	-140.37	136.4	730.4	1,016.5	973.1	43.31	23.467		
7,000.0	6,892.4	6,966.5	6,886.7	26.8	22.0	-0.32	136.4	728.3	1,016.4	976.8	39.56	25.695		
7,100.0	6,992.3	7,062.4	6,979.9	26.9	21.9	88.59	136.3	705.8	1,016.7	973.5	43.16	23.558		
7,200.0	7,090.9	7,155.7	7,066.8	26.9	21.8	87.46	136.3	672.2	1,017.4	974.6	42.81	23.767		
7,300.0	7,186.3	7,246.8	7,146.8	26.8	21.6	86.38	136.2	628.8	1,018.4	976.1	42.33	24.057		
7,400.0	7,276.6	7,335.9	7,219.1	26.6	21.4	85.38	136.2	576.8	1,019.7	977.9	41.82	24.381		
7,500.0	7,360.1	7,423.4	7,283.3	26.4	21.2	84.46	136.1	517.4	1,021.1	979.8	41.38	24.677		
7,600.0	7,435.1	7,509.5	7,339.0	26.2	21.2	83.64	136.0	451.8	1,022.6	981.5	41.12	24.872		
7,700.0	7,500.3	7,594.4	7,385.8	26.0	21.3	82.93	135.9	381.0	1,024.1	982.9	41.15	24.883		
7,800.0	7,554.2	7,678.4	7,423.4	25.8	21.6	82.34	135.9	306.0	1,025.4	983.7	41.62	24.639		
7,900.0	7,595.9	7,761.7	7,451.9	25.6	22.0	81.88	135.8	227.8	1,026.4	983.9	42.56	24.118		
8,000.0	7,624.6	7,844.4	7,471.0	25.5	22.7	81.56	135.7	147.3	1,027.2	983.2	44.01	23.339		
8,100.0	7,639.6	7,926.8	7,480.7	25.4	23.6	81.37	135.6	65.6	1,027.7	981.7	45.95	22.367		
8,200.0	7,642.0	8,017.4	7,482.0	25.6	24.7	81.33	135.5	-25.0	1,027.7	979.4	48.37	21.249		
8,300.0	7,642.0	8,117.4	7,482.0	26.3	26.2	81.33	135.3	-125.0	1,027.7	976.4	51.31	20.030		
8,400.0	7,642.0	8,217.4	7,482.0	27.7	27.8	81.32	135.2	-225.0	1,027.6	973.0	54.65	18.802		
8,500.0	7,642.0	8,317.4	7,482.0	29.5	29.7	81.32	135.1	-325.0	1,027.6	969.2	58.34	17.614		
8,600.0	7,642.0	8,417.4	7,482.0	31.5	31.7	81.32	135.0	-425.0	1,027.5	965.2	62.30	16.493		
8,700.0	7,642.0	8,517.4	7,482.0	33.7	33.8	81.32	134.9	-525.0	1,027.5	961.0	66.49	15.453		
8,800.0	7,642.0	8,617.4	7,482.0	35.9	36.0	81.32	134.7	-625.0	1,027.4	956.6	70.87	14.498		
8,900.0	7,642.0	8,717.4	7,482.0	38.3	38.3	81.32	134.6	-725.0	1,027.4	952.0	75.40	13.626		
9,000.0	7,642.0	8,817.4	7,482.0	40.6	40.6	81.32	134.5	-825.0	1,027.3	947.3	80.06	12.832		
9,100.0	7,642.0	8,917.4	7,482.0	43.1	43.0	81.32	134.4	-925.0	1,027.3	942.5	84.82	12.111		
9,200.0	7,642.0	9,017.4	7,482.0	45.6	45.5	81.32	134.3	-1,025.0	1,027.2	937.5	89.68	11.454		
9,300.0	7,642.0	9,117.4	7,482.0	48.1	47.9	81.32	134.1	-1,125.0	1,027.2	932.6	94.61	10.856		
9,400.0	7,642.0	9,217.4	7,482.0	50.6	50.5	81.32	134.0	-1,225.0	1,027.1	927.5	99.61	10.311		
9,500.0	7,642.0	9,317.4	7,482.0	53.2	53.0	81.32	133.9	-1,325.0	1,027.1	922.4	104.67	9.813		
9,600.0	7,642.0	9,417.4	7,482.0	55.8	55.6	81.32	133.8	-1,425.0	1,027.0	917.3	109.77	9.356		
9,700.0	7,642.0	9,517.4	7,482.0	58.4	58.2	81.32	133.7	-1,525.0	1,027.0	912.1	114.91	8.937		
9,800.0	7,642.0	9,617.4	7,482.0	61.0	60.8	81.32	133.5	-1,625.0	1,026.9	906.8	120.09	8.551		
9,900.0	7,642.0	9,717.4	7,482.0	63.6	63.4	81.32	133.4	-1,725.0	1,026.9	901.6	125.30	8.195		
10,000.0	7,642.0	9,817.4	7,482.0	66.3	66.1	81.32	133.3	-1,825.0	1,026.8	896.3	130.54	7.866		

CC - Min centre to center distance or convergent point, SF - min separation factor, ES - min ellipse separation

Survey Design													Offset Site Error:	
SRC Eberle 14-32-31CHZM Pad Sec.32-T1N-R66W - SRC Eberle B-32NHZ - Wellbore #1 - Plan #1 (12													Offset Well Error:	
Reference		Offset		Semi Major Axis			Distance							
Measured Depth	Vertical Depth	Measured Depth	Vertical Depth	Reference	Offset	Highside Toolface	Offset Wellbore Centre		Between Centres	Between Ellipses	Minimum Separation	Separation Factor	Warning	
(ft)	(ft)	(ft)	(ft)	(ft)	(ft)	(°)	+N/-S (ft)	+E/-W (ft)	(ft)	(ft)	(ft)			
10,100.0	7,642.0	9,917.4	7,482.0	68.9	68.7	81.32	133.2	-1,925.0	1,026.8	891.0	135.80	7.561		
10,200.0	7,642.0	10,017.4	7,482.0	71.6	71.4	81.32	133.1	-2,025.0	1,026.7	885.6	141.09	7.277		
10,300.0	7,642.0	10,117.4	7,482.0	74.3	74.1	81.32	133.0	-2,125.0	1,026.7	880.3	146.39	7.013		
10,400.0	7,642.0	10,217.4	7,482.0	77.0	76.7	81.32	132.8	-2,225.0	1,026.6	874.9	151.72	6.767		
10,500.0	7,642.0	10,317.4	7,482.0	79.7	79.4	81.32	132.7	-2,325.0	1,026.6	869.5	157.06	6.536		
10,600.0	7,642.0	10,417.4	7,482.0	82.4	82.1	81.32	132.6	-2,425.0	1,026.5	864.1	162.41	6.321		
10,700.0	7,642.0	10,517.4	7,482.0	85.1	84.8	81.31	132.5	-2,525.0	1,026.5	858.7	167.77	6.118		
10,800.0	7,642.0	10,617.4	7,482.0	87.8	87.6	81.31	132.4	-2,625.0	1,026.4	853.3	173.15	5.928		
10,900.0	7,642.0	10,717.4	7,482.0	90.5	90.3	81.31	132.2	-2,725.0	1,026.4	847.8	178.54	5.749		
11,000.0	7,642.0	10,817.4	7,482.0	93.3	93.0	81.31	132.1	-2,825.0	1,026.3	842.4	183.94	5.580		
11,100.0	7,642.0	10,917.4	7,482.0	96.0	95.7	81.31	132.0	-2,925.0	1,026.3	836.9	189.34	5.420		
11,200.0	7,642.0	11,017.4	7,482.0	98.7	98.5	81.31	131.9	-3,025.0	1,026.2	831.5	194.75	5.269		
11,300.0	7,642.0	11,117.4	7,482.0	101.5	101.2	81.31	131.8	-3,125.0	1,026.2	826.0	200.18	5.126		
11,400.0	7,642.0	11,217.4	7,482.0	104.2	103.9	81.31	131.6	-3,225.0	1,026.1	820.5	205.60	4.991		
11,500.0	7,642.0	11,317.4	7,482.0	106.9	106.7	81.31	131.5	-3,325.0	1,026.1	815.0	211.04	4.862		
11,600.0	7,642.0	11,417.4	7,482.0	109.7	109.4	81.31	131.4	-3,425.0	1,026.0	809.5	216.48	4.740		
11,700.0	7,642.0	11,517.4	7,482.0	112.4	112.2	81.31	131.3	-3,525.0	1,026.0	804.0	221.92	4.623		
11,800.0	7,642.0	11,617.4	7,482.0	115.2	114.9	81.31	131.2	-3,625.0	1,025.9	798.5	227.38	4.512		
11,900.0	7,642.0	11,717.4	7,482.0	118.0	117.7	81.31	131.0	-3,725.0	1,025.9	793.0	232.83	4.406		
12,000.0	7,642.0	11,817.4	7,482.0	120.7	120.5	81.31	130.9	-3,825.0	1,025.8	787.5	238.29	4.305		
12,100.0	7,642.0	11,917.4	7,482.0	123.5	123.2	81.31	130.8	-3,925.0	1,025.8	782.0	243.75	4.208		
12,154.6	7,642.0	11,972.0	7,482.0	125.0	124.7	81.31	130.7	-3,979.7	1,025.7	779.0	246.74	4.157		
12,200.0	7,642.0	11,981.6	7,482.0	126.2	125.0	81.31	130.7	-3,989.3	1,026.3	778.1	248.24	4.134		
12,300.0	7,642.0	11,981.6	7,482.0	129.0	125.0	81.31	130.7	-3,989.3	1,034.6	783.6	250.98	4.122 SF		
12,400.0	7,642.0	11,981.6	7,482.0	131.8	125.0	81.31	130.7	-3,989.3	1,052.4	798.6	253.72	4.148		
12,500.0	7,642.0	11,981.6	7,482.0	134.5	125.0	81.31	130.7	-3,989.3	1,079.1	822.7	256.46	4.208		
12,600.0	7,642.0	11,981.6	7,482.0	137.3	125.0	81.31	130.7	-3,989.3	1,114.3	855.1	259.20	4.299		
12,700.0	7,642.0	11,981.6	7,482.0	140.1	125.0	81.31	130.7	-3,989.3	1,157.0	895.0	261.94	4.417		
12,800.0	7,642.0	11,981.6	7,482.0	142.8	125.0	81.31	130.7	-3,989.3	1,206.5	941.8	264.69	4.558		
12,900.0	7,642.0	11,981.6	7,482.0	145.6	125.0	81.31	130.7	-3,989.3	1,262.0	994.6	267.43	4.719		
13,000.0	7,642.0	11,981.6	7,482.0	148.4	125.0	81.31	130.7	-3,989.3	1,322.8	1,052.6	270.18	4.896		
13,100.0	7,642.0	11,981.6	7,482.0	151.2	125.0	81.31	130.7	-3,989.3	1,388.1	1,115.2	272.93	5.086		
13,200.0	7,642.0	11,981.6	7,482.0	153.9	125.0	81.31	130.7	-3,989.3	1,457.4	1,181.7	275.68	5.286		
13,300.0	7,642.0	11,981.6	7,482.0	156.7	125.0	81.31	130.7	-3,989.3	1,530.0	1,251.6	278.43	5.495		
13,400.0	7,642.0	11,981.6	7,482.0	159.5	125.0	81.31	130.7	-3,989.3	1,605.6	1,324.4	281.18	5.710		
13,500.0	7,642.0	11,981.6	7,482.0	162.3	125.0	81.31	130.7	-3,989.3	1,683.8	1,399.8	283.93	5.930		
13,600.0	7,642.0	11,981.6	7,482.0	165.0	125.0	81.31	130.7	-3,989.3	1,764.1	1,477.4	286.68	6.154		
13,700.0	7,642.0	11,981.6	7,482.0	167.8	125.0	81.31	130.7	-3,989.3	1,846.4	1,556.9	289.43	6.379		
13,800.0	7,642.0	11,981.6	7,482.0	170.6	125.0	81.31	130.7	-3,989.3	1,930.3	1,638.1	292.19	6.607		
13,900.0	7,642.0	11,981.6	7,482.0	173.4	125.0	81.31	130.7	-3,989.3	2,015.7	1,720.8	294.94	6.834		
14,000.0	7,642.0	11,981.6	7,482.0	176.2	125.0	81.31	130.7	-3,989.3	2,102.4	1,804.8	297.69	7.062		
14,100.0	7,642.0	11,981.6	7,482.0	178.9	125.0	81.31	130.7	-3,989.3	2,190.3	1,889.8	300.45	7.290		
14,200.0	7,642.0	11,981.6	7,482.0	181.7	125.0	81.31	130.7	-3,989.3	2,279.1	1,975.9	303.21	7.517		
14,300.0	7,642.0	11,981.6	7,482.0	184.5	125.0	81.31	130.7	-3,989.3	2,368.8	2,062.9	305.96	7.742		
14,400.0	7,642.0	11,981.6	7,482.0	187.3	125.0	81.31	130.7	-3,989.3	2,459.4	2,150.6	308.72	7.966		
14,500.0	7,642.0	11,981.6	7,482.0	190.1	125.0	81.31	130.7	-3,989.3	2,550.6	2,239.1	311.48	8.189		
14,600.0	7,642.0	11,981.6	7,482.0	192.9	125.0	81.31	130.7	-3,989.3	2,642.5	2,328.2	314.24	8.409		
14,700.0	7,642.0	11,981.6	7,482.0	195.7	125.0	81.31	130.7	-3,989.3	2,734.9	2,417.9	316.99	8.628		
14,800.0	7,642.0	11,981.6	7,482.0	198.4	125.0	81.31	130.7	-3,989.3	2,827.8	2,508.1	319.75	8.844		
14,835.2	7,642.0	11,981.6	7,482.0	199.4	125.0	81.31	130.7	-3,989.3	2,860.7	2,540.0	320.73	8.919		

Company:	Synergy Resources	Local Co-ordinate Reference:	Well SRC Eberle 14-32-31CHZM
Project:	SEC.32-T1N-R66W	TVD Reference:	WELL @ 5046.0ft (RKB - 12')
Reference Site:	SRC Eberle 14-32-31CHZM Pad Sec.32-T1N-R66W	MD Reference:	WELL @ 5046.0ft (RKB - 12')
Site Error:	0.0ft	North Reference:	True
Reference Well:	SRC Eberle 14-32-31CHZM	Survey Calculation Method:	Minimum Curvature
Well Error:	0.0ft	Output errors are at	2.00 sigma
Reference Wellbore	Wellbore #1	Database:	Landmark
Reference Design:	Plan #2 (1-2-14)	Offset TVD Reference:	Offset Datum

Reference Depths are relative to WELL @ 5046.0ft (RKB - 12')

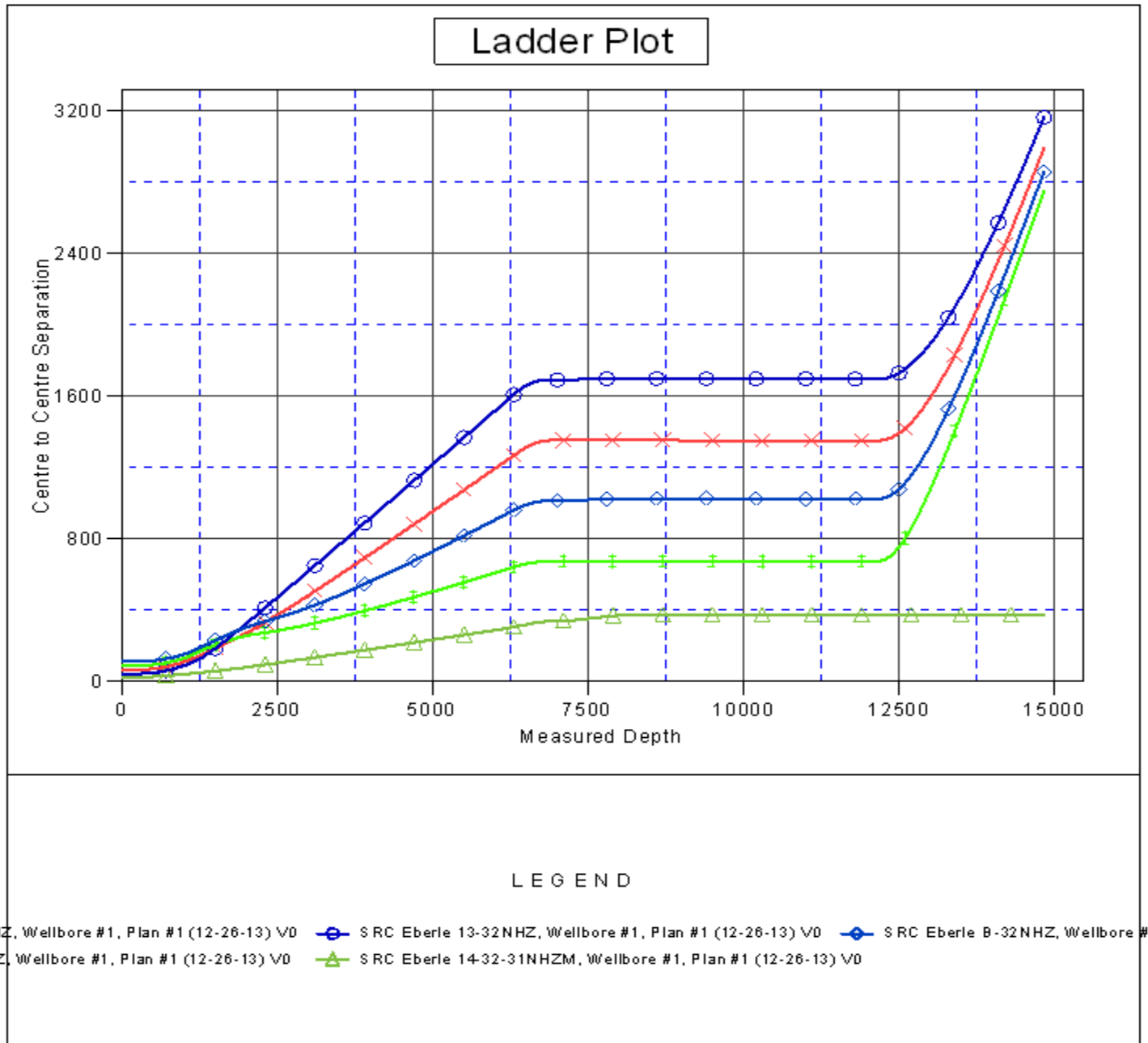
Offset Depths are relative to Offset Datum

Central Meridian is -105.500000 °

Coordinates are relative to: SRC Eberle 14-32-31CHZM

Coordinate System is US State Plane 1983, Colorado Northern Zone

Grid Convergence at Surface is: 0.46°



Company:	Synergy Resources	Local Co-ordinate Reference:	Well SRC Eberle 14-32-31CHZM
Project:	SEC.32-T1N-R66W	TVD Reference:	WELL @ 5046.0ft (RKB - 12')
Reference Site:	SRC Eberle 14-32-31CHZM Pad Sec.32-T1N-R66W	MD Reference:	WELL @ 5046.0ft (RKB - 12')
Site Error:	0.0ft	North Reference:	True
Reference Well:	SRC Eberle 14-32-31CHZM	Survey Calculation Method:	Minimum Curvature
Well Error:	0.0ft	Output errors are at	2.00 sigma
Reference Wellbore	Wellbore #1	Database:	Landmark
Reference Design:	Plan #2 (1-2-14)	Offset TVD Reference:	Offset Datum

Reference Depths are relative to WELL @ 5046.0ft (RKB - 12')
 Offset Depths are relative to Offset Datum
 Central Meridian is -105.500000 °

Coordinates are relative to: SRC Eberle 14-32-31CHZM
 Coordinate System is US State Plane 1983, Colorado Northern Zone
 Grid Convergence at Surface is: 0.46°

