



Noble Energy Inc

RM-13585

1":100' - TVD

8/5/2013 6:38:57 PM

Oper. Company: DDC
Country: United States
State / Province: Colorado
County / Parish: Weld County
Started: 07/28/2013 11:00 PM

API/UWI: 05-123-37465
Field: Wildcat
Well: Rohn State LD04-68HN
Rig: H&P #326
Ended: 08/05/2013 05:00 PM

Personnel

Day Hand: CHRIS ABBOTT
Night Hand: SCOTT SIMS
Comp. Emp: JOHN DRAHOTA

Location

Latitude: 40.78613 N
Longitude: -103.87778 W
Elev. GL: 4747
Elev. DF: 30
Elev. KB: 4777

Rohn State LD04-68HN FINAL 1" TVD

Hole Data

Size	From	To
13 3/4	0	664
8 3/4	664	6132
6 1/8	6132	14739

Casing Data

Size	From	To
9 5/8	0	654
7	654	6122

Bit Sizes

Size	From	To
------	------	----

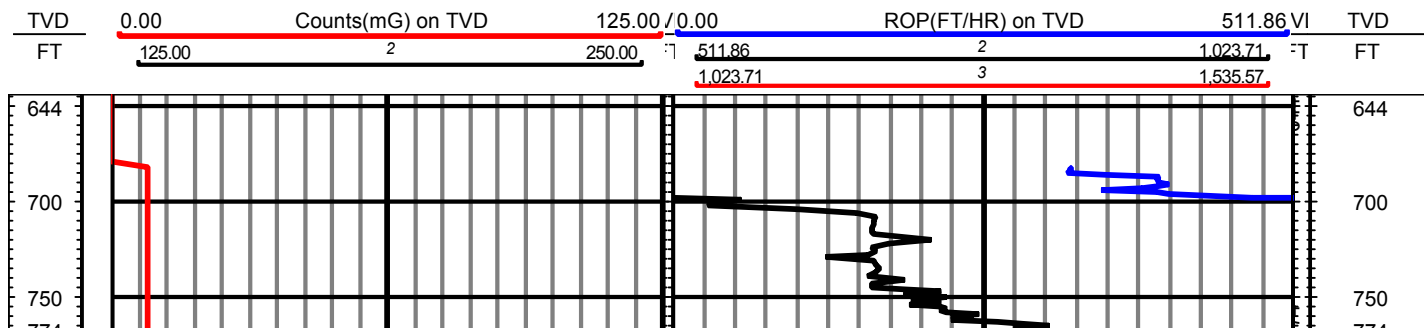
Mud Data

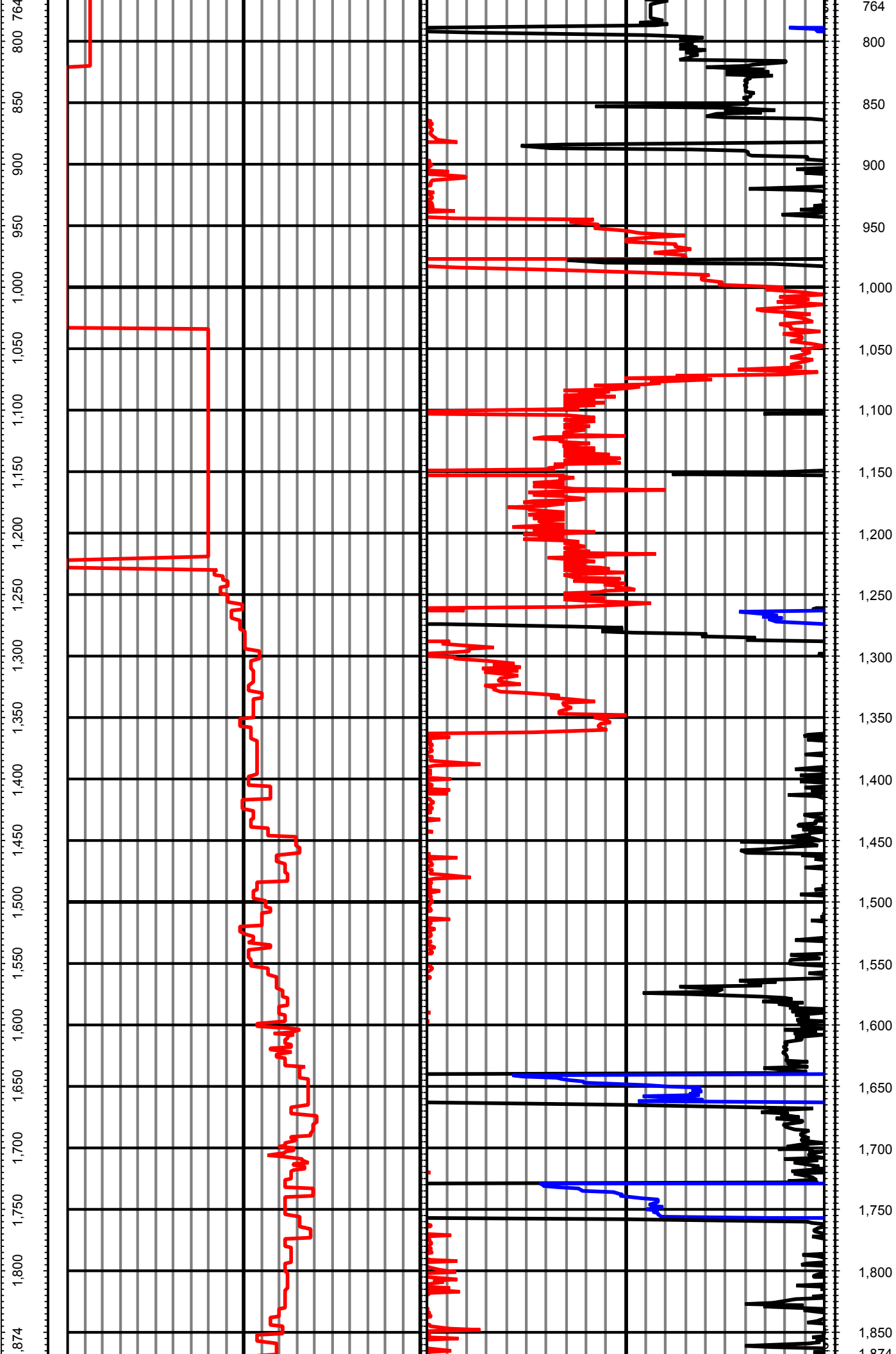
Type	Weight	Density	Viscosity	Rm	Rmf	Rmc	From	To
------	--------	---------	-----------	----	-----	-----	------	----

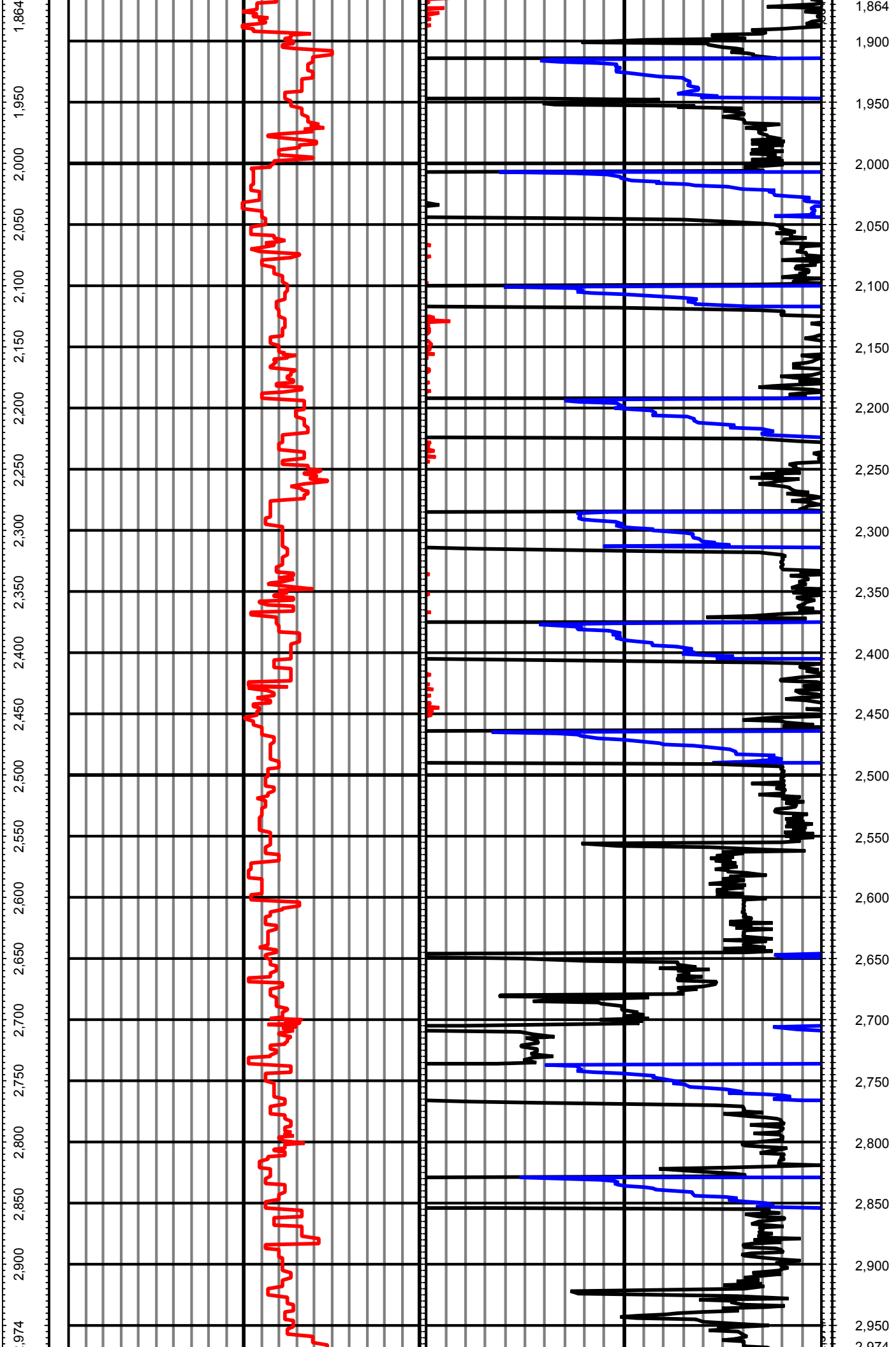
Tool Run Data

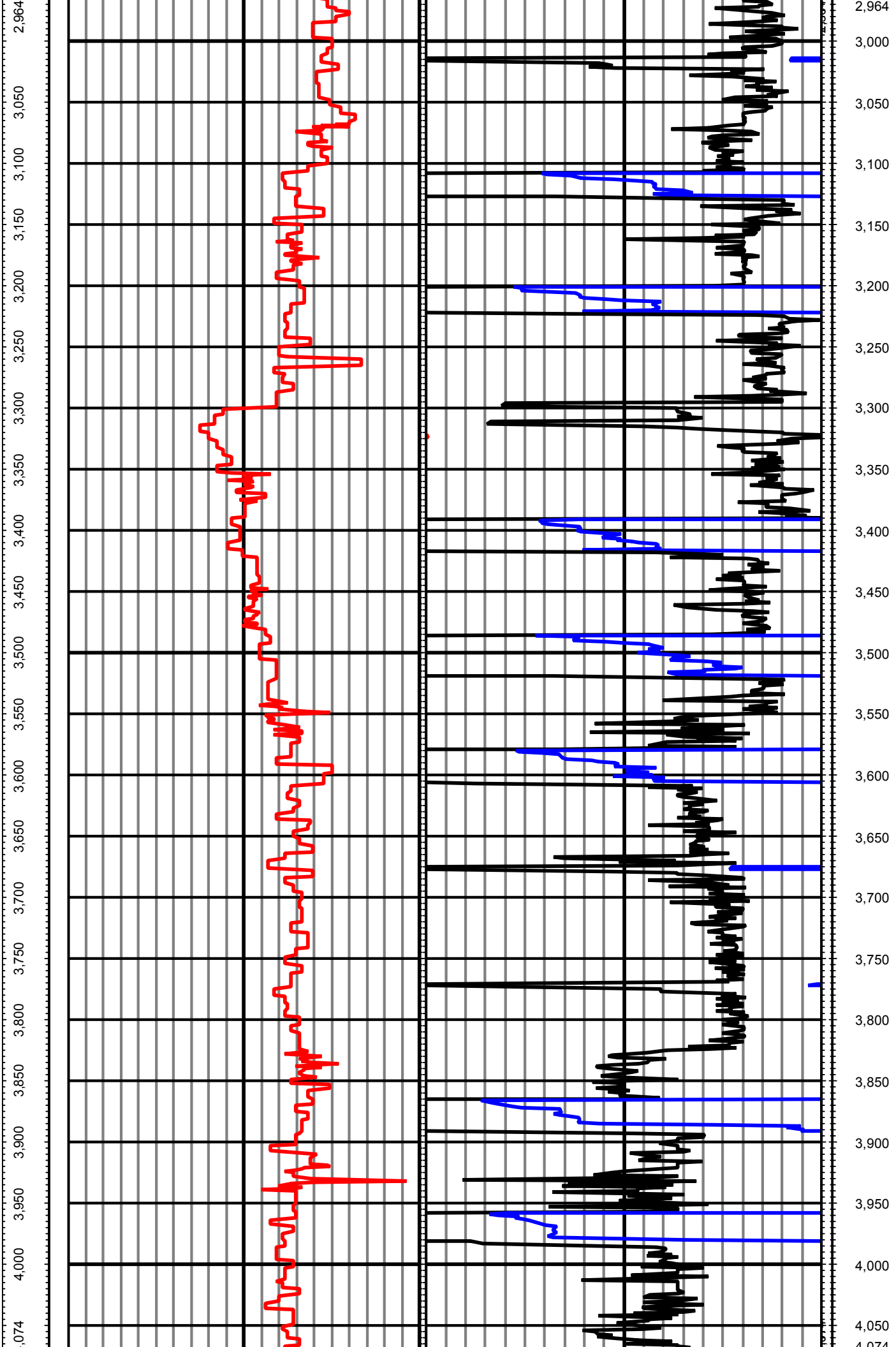
Serial Number	Gamma Offset	Resist. Offset	Start Time	Start Depth	End Time	End Depth
1971	38	3.175	7/28/2013 11:00:41 PM	664	7/29/2013 2:00:41 AM	1259
130	38	3.768	7/29/2013 6:00:05 AM	1259	7/29/2013 11:30:05 PM	4986
130	47	3.768	7/30/2013 9:00:10 AM	4986	7/31/2013 1:00:10 AM	6132
130	51	4986	8/1/2013 3:00:56 PM	6132	8/5/2013 5:00:56 PM	14739

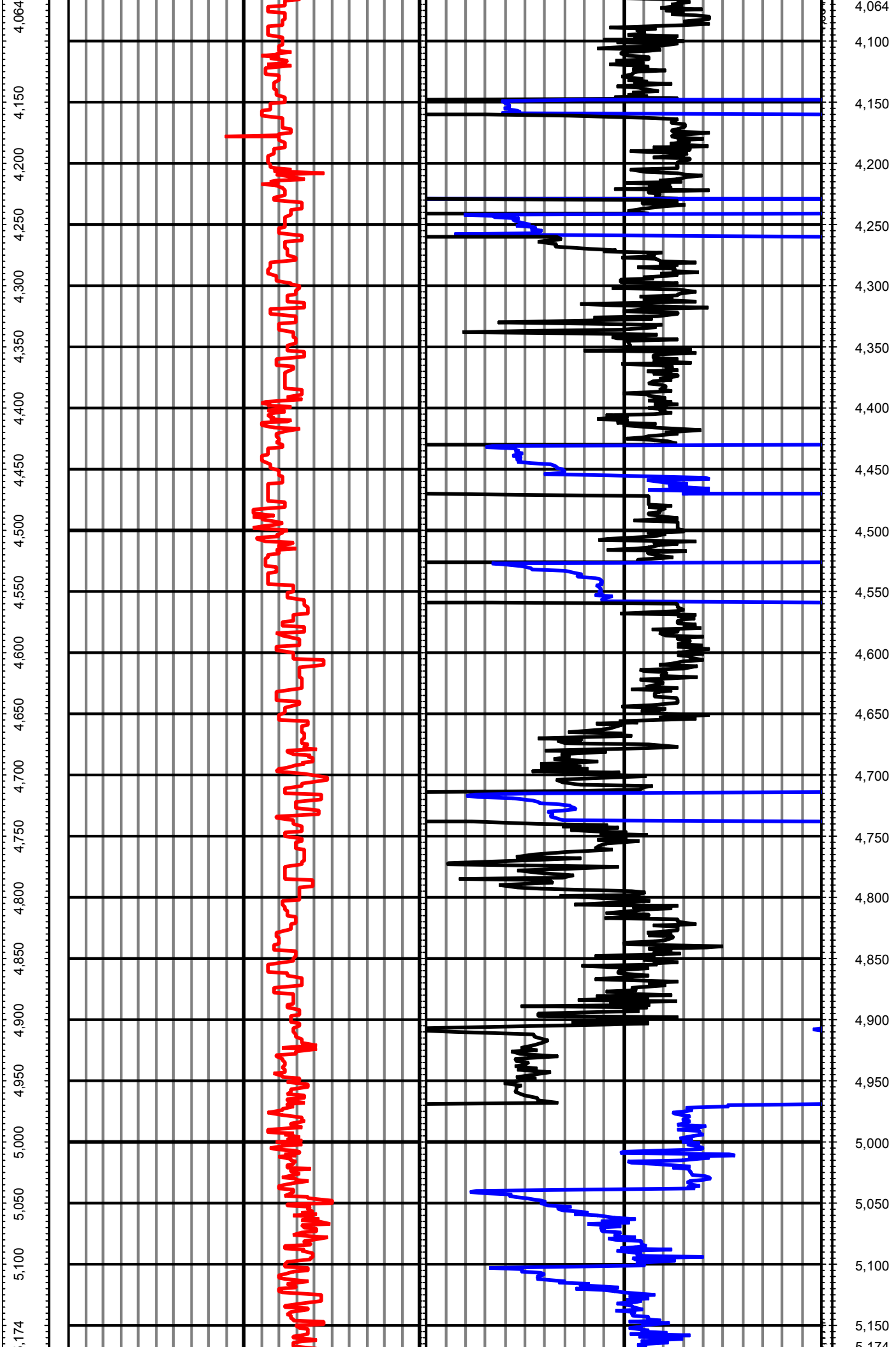
All interpretations are opinions based on inferences from electrical or other measurements and we cannot and do not guarantee the accuracy or correctness of any interpretation, and we shall not except in the case of gross or willful negligence on our part, be liable or responsible for any loss, cost damages or expenses incurred or sustained by anyone resulting from an interpretation made by any of our officers, agents, or employees.

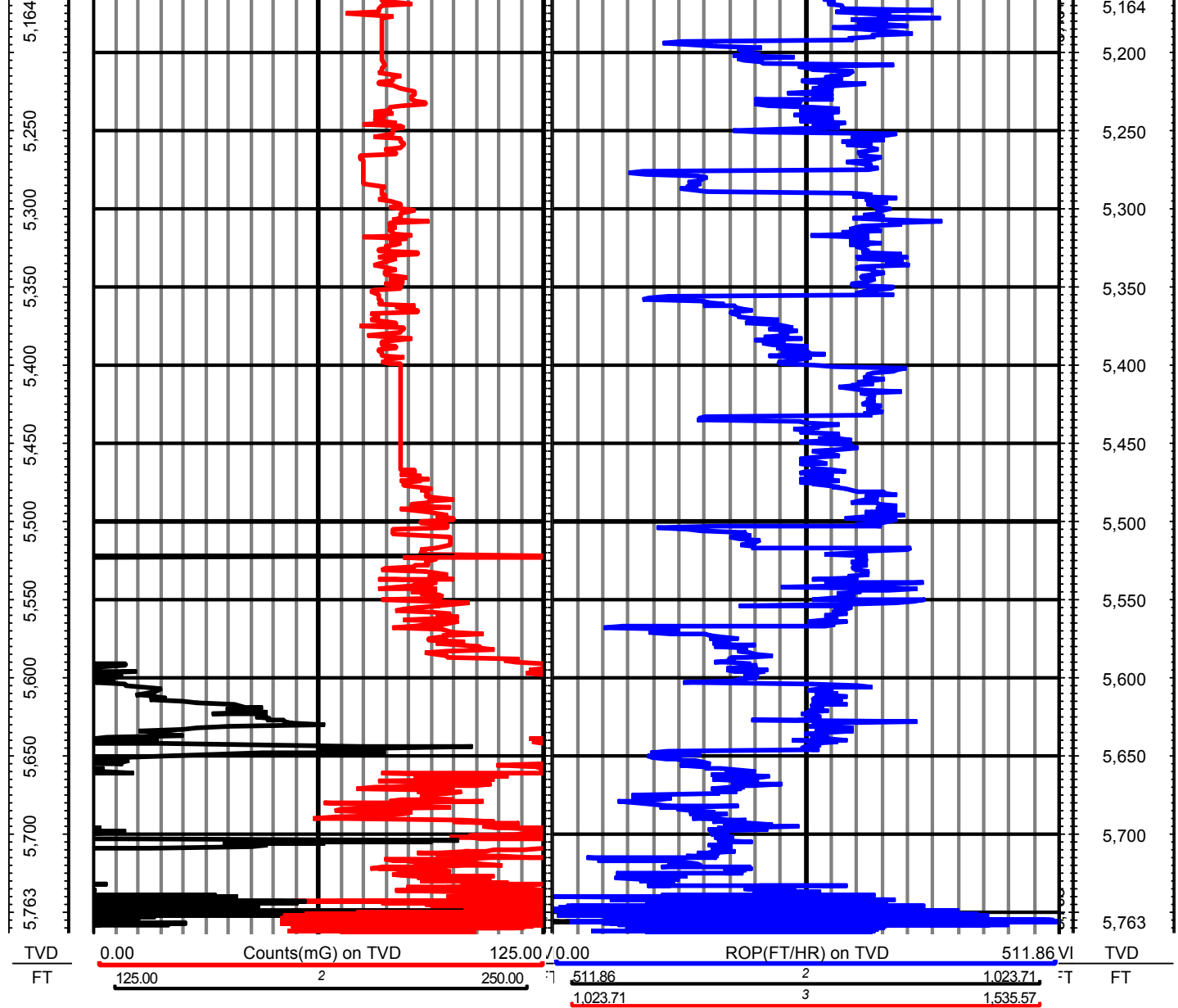














Noble Energy Inc

RM-13585

5":100' - TVD

8/5/2013 6:40:10 PM

Oper. Company: DDC
Country: United States
State / Province: Colorado
County / Parish: Weld County
Started: 07/28/2013 11:00 PM

API/UWI: 05-123-37465
Field: Wildcat
Well: Rohn State LD04-68HN
Rig: H&P #326
Ended: 08/05/2013 05:00 PM

Personnel

Day Hand: CHRIS ABBOTT
Night Hand: SCOTT SIMS
Comp. Emp: JOHN DRAHOTA

Location

Latitude: 40.78613 N
Longitude: -103.87778 W
Elev. GL: 4747
Elev. DF: 30
Elev. KB: 4777

Rohn State LD04-68HN FINAL 5" TVD

Hole Data

Size	From	To
13 3/4	0	664
8 3/4	664	6132
6 1/8	6132	14739

Casing Data

Size	From	To
9 5/8	0	654
7	654	6122

Bit Sizes

Size	From	To
------	------	----

Mud Data

Type	Weight	Density	Viscosity	Rm	Rmf	Rmc	From	To
------	--------	---------	-----------	----	-----	-----	------	----

Tool Run Data

Serial Number	Gamma Offset	Resist. Offset	Start Time	Start Depth	End Time	End Depth
1971	38	3.175	7/28/2013 11:00:41 PM	664	7/29/2013 2:00:41 AM	1259
130	38	3.768	7/29/2013 6:00:05 AM	1259	7/29/2013 11:30:05 PM	4986
130	47	3.768	7/30/2013 9:00:10 AM	4986	7/31/2013 1:00:10 AM	6132
130	51	4986	8/1/2013 3:00:56 PM	6132	8/5/2013 5:00:56 PM	14739

All interpretations are opinions based on inferences from electrical or other measurements and we cannot and do not guarantee the accuracy or correctness of any interpretation, and we shall not except in the case of gross or willful negligence on our part, be liable or responsible for any loss, cost damages or expenses incurred or sustained by anyone resulting from an interpretation made by any of our officers, agents, or employees.

TVD	0.00	Counts(mG) on TVD	125.00 / 0.00	ROP(FT/HR) on TVD	511.86 VI	TVD
FT	125.00	2	250.00	511.86	2	1,023.71
				1,023.71	3	1,535.57

644						644
650						650
660						660
670						670

