

Synergy Resources

Well Name: **SRC Eberle 14-32-31NHZM**

Surface Location: SRC Eberle 14-32-31CHZM Pad Sec.32-T1N-R66W
North American Datum 1983 , US State Plane 1983 , Colorado Northern Zone

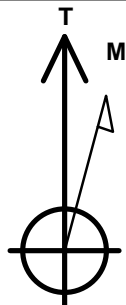
Ground Elevation: 5033.0

+N/-S	+E/-W	Northing	Easting	Latitude	Longitude	Slot
0.0	0.0	1245146.45	3197623.03	40.004155	-104.794540	

RKB - 12' WELL @ 5045.0ft (RKB - 12')

WELLBORE TARGET DETAILS

Name	TVD	+N/-S	+E/-W	Shape Point
SHL 1355'FSL & 848'FEL, Sec.32	1.0	0.0	0.0	Point
BHL 814'FSL & 2193'FEL, Sec.31	7485.0	-546.6	-6632.6	Point



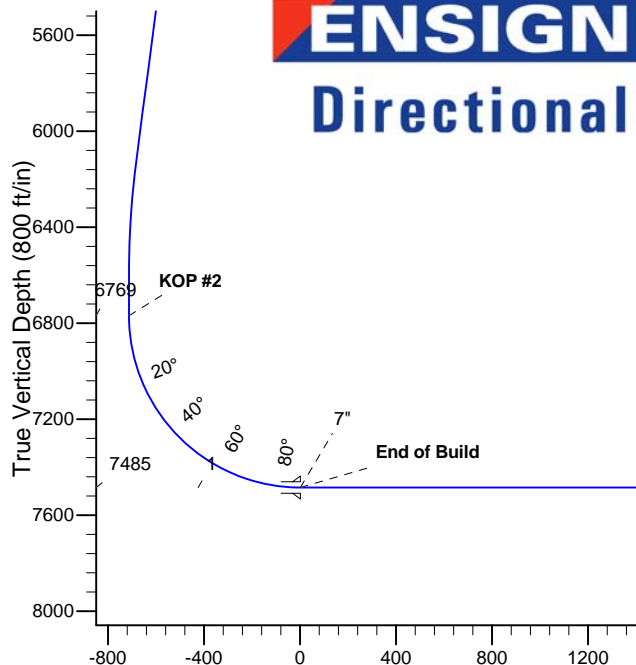
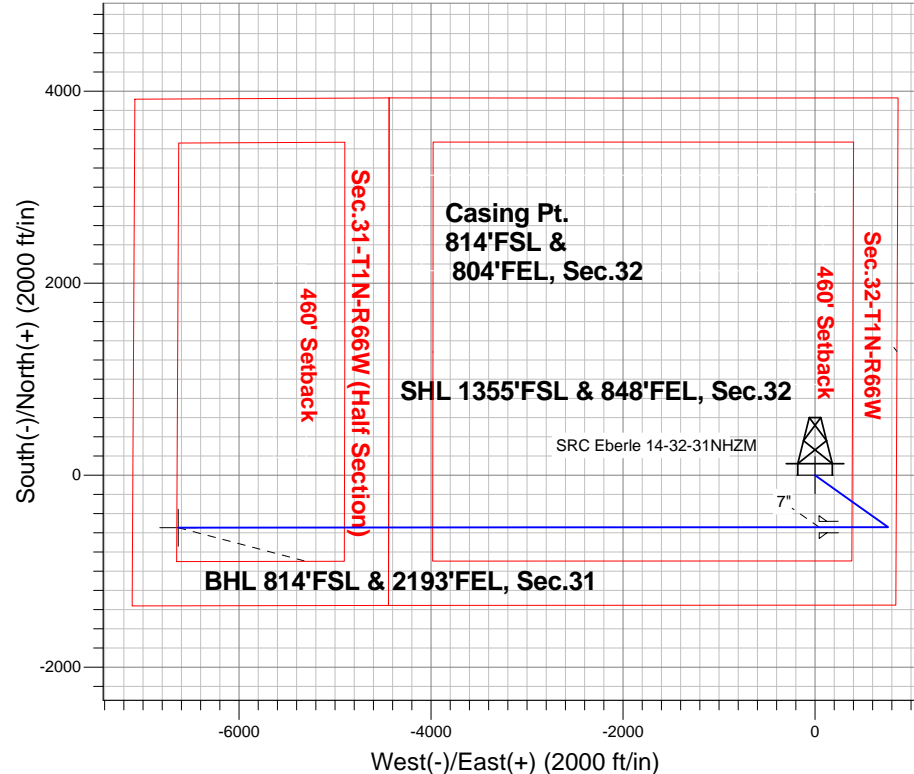
Azimuths to True North
Magnetic North: 8.51°

Magnetic Field
Strength: 52654.2snT
Dip Angle: 66.64°
Date: 12/17/2013
Model: IGRF2010

SRC Eberle 14-32-31CHZM Pad Sec.32-T1N-R66W
SRC Eberle 14-32-31NHZM
Plan #2 (1-2-14)
8:41, January 03 2014

ANNOTATIONS

TVD	MD	Annotation
400.0	400.0	KOP #1
6768.8	6844.3	KOP #2
7485.0	7969.3	End of Build



SECTION DETAILS

Sec	MD	Inc	Azi	TVD	+N/-S	+E/-W	DLeg	TFace	VSec	Target
1	0.0	0.00	0.00	0.0	0.0	0.0	0.00	0.00	0.0	
2	400.0	0.00	0.00	400.0	0.0	0.0	0.00	0.00	0.0	
3	1367.4	9.67	125.44	1362.8	-47.2	66.4	1.00	125.44	-62.3	
4	6191.8	9.67	125.44	6118.6	-517.4	726.8	0.00	0.00	-681.9	
5	6675.5	0.00	0.00	6600.0	-541.0	760.0	2.00	180.00	-713.0	
6	6844.3	0.00	0.00	6768.8	-541.0	760.0	0.00	0.00	-713.0	
7	7969.3	90.00	269.96	7485.0	-541.5	43.8	8.00	269.96	0.8	
8	14645.7	90.00	269.96	7485.0	-546.6	-6632.6	0.00	0.00	6655.1	BHL 814'FSL & 2193'FEL, Sec.31

BHL 814'FSL & 2193'FEL, Sec.31

Vertical Section at 265.29° (800 ft/in)



Synergy Resources

SEC.32-T1N-R66W

SRC Eberle 14-32-31CHZM Pad Sec.32-T1N-R66W

SRC Eberle 14-32-31NHZM

Wellbore #1

Plan: Plan #2 (1-2-14)

Standard Planning Report

03 January, 2014

Plan Sections										
Measured Depth (ft)	Inclination (°)	Azimuth (°)	Vertical Depth (ft)	+N/-S (ft)	+E/-W (ft)	Dogleg Rate (°/100ft)	Build Rate (°/100ft)	Turn Rate (°/100ft)	TFO (°)	Target
0.0	0.00	0.00	0.0	0.0	0.0	0.00	0.00	0.00	0.00	
400.0	0.00	0.00	400.0	0.0	0.0	0.00	0.00	0.00	0.00	
1,367.4	9.67	125.44	1,362.8	-47.2	66.4	1.00	1.00	0.00	125.44	
6,191.8	9.67	125.44	6,118.6	-517.4	726.8	0.00	0.00	0.00	0.00	
6,675.5	0.00	0.00	6,600.0	-541.0	760.0	2.00	-2.00	0.00	180.00	
6,844.3	0.00	0.00	6,768.8	-541.0	760.0	0.00	0.00	0.00	0.00	
7,969.3	90.00	269.96	7,485.0	-541.5	43.8	8.00	8.00	0.00	269.96	
14,645.7	90.00	269.96	7,485.0	-546.6	-6,632.6	0.00	0.00	0.00	0.00	BHL 814°FSL & 219°

Database:	Landmark	Local Co-ordinate Reference:	Well SRC Eberle 14-32-31NHZM
Company:	Synergy Resources	TVD Reference:	WELL @ 5045.0ft (RKB - 12')
Project:	SEC.32-T1N-R66W	MD Reference:	WELL @ 5045.0ft (RKB - 12')
Site:	SRC Eberle 14-32-31CHZM Pad Sec.32-T1N-R66W	North Reference:	True
Well:	SRC Eberle 14-32-31NHZM	Survey Calculation Method:	Minimum Curvature
Wellbore:	Wellbore #1		
Design:	Plan #2 (1-2-14)		

Planned Survey

Measured Depth (ft)	Inclination (°)	Azimuth (°)	Vertical Depth (ft)	+N/-S (ft)	+E/-W (ft)	Vertical Section (ft)	Dogleg Rate (°/100ft)	Build Rate (°/100ft)	Turn Rate (°/100ft)
0.0	0.00	0.00	0.0	0.0	0.0	0.0	0.00	0.00	0.00
1.0	0.00	0.00	1.0	0.0	0.0	0.0	0.00	0.00	0.00
SHL 1355'FSL & 848'FEL, Sec.32									
100.0	0.00	0.00	100.0	0.0	0.0	0.0	0.00	0.00	0.00
200.0	0.00	0.00	200.0	0.0	0.0	0.0	0.00	0.00	0.00
300.0	0.00	0.00	300.0	0.0	0.0	0.0	0.00	0.00	0.00
400.0	0.00	0.00	400.0	0.0	0.0	0.0	0.00	0.00	0.00
KOP #1									
500.0	1.00	125.44	500.0	-0.5	0.7	-0.7	1.00	1.00	0.00
600.0	2.00	125.44	600.0	-2.0	2.8	-2.7	1.00	1.00	0.00
700.0	3.00	125.44	699.9	-4.6	6.4	-6.0	1.00	1.00	0.00
800.0	4.00	125.44	799.7	-8.1	11.4	-10.7	1.00	1.00	0.00
900.0	5.00	125.44	899.4	-12.6	17.8	-16.7	1.00	1.00	0.00
1,000.0	6.00	125.44	998.9	-18.2	25.6	-24.0	1.00	1.00	0.00
1,100.0	7.00	125.44	1,098.3	-24.8	34.8	-32.6	1.00	1.00	0.00
1,200.0	8.00	125.44	1,197.4	-32.3	45.4	-42.6	1.00	1.00	0.00
1,300.0	9.00	125.44	1,296.3	-40.9	57.5	-53.9	1.00	1.00	0.00
1,367.4	9.67	125.44	1,362.8	-47.2	66.4	-62.3	1.00	1.00	0.00
1,400.0	9.67	125.44	1,394.9	-50.4	70.8	-66.5	0.00	0.00	0.00
1,500.0	9.67	125.44	1,493.5	-60.2	84.5	-79.3	0.00	0.00	0.00
1,600.0	9.67	125.44	1,592.1	-69.9	98.2	-92.1	0.00	0.00	0.00
1,700.0	9.67	125.44	1,690.7	-79.7	111.9	-105.0	0.00	0.00	0.00
1,800.0	9.67	125.44	1,789.3	-89.4	125.6	-117.8	0.00	0.00	0.00
1,900.0	9.67	125.44	1,887.8	-99.1	139.3	-130.7	0.00	0.00	0.00
2,000.0	9.67	125.44	1,986.4	-108.9	153.0	-143.5	0.00	0.00	0.00
2,100.0	9.67	125.44	2,085.0	-118.6	166.7	-156.4	0.00	0.00	0.00
2,200.0	9.67	125.44	2,183.6	-128.4	180.4	-169.2	0.00	0.00	0.00
2,300.0	9.67	125.44	2,282.1	-138.1	194.0	-182.0	0.00	0.00	0.00
2,400.0	9.67	125.44	2,380.7	-147.9	207.7	-194.9	0.00	0.00	0.00
2,500.0	9.67	125.44	2,479.3	-157.6	221.4	-207.7	0.00	0.00	0.00
2,600.0	9.67	125.44	2,577.9	-167.4	235.1	-220.6	0.00	0.00	0.00
2,700.0	9.67	125.44	2,676.5	-177.1	248.8	-233.4	0.00	0.00	0.00
2,800.0	9.67	125.44	2,775.0	-186.9	262.5	-246.3	0.00	0.00	0.00
2,900.0	9.67	125.44	2,873.6	-196.6	276.2	-259.1	0.00	0.00	0.00
3,000.0	9.67	125.44	2,972.2	-206.3	289.9	-271.9	0.00	0.00	0.00
3,100.0	9.67	125.44	3,070.8	-216.1	303.6	-284.8	0.00	0.00	0.00
3,200.0	9.67	125.44	3,169.4	-225.8	317.3	-297.6	0.00	0.00	0.00
3,300.0	9.67	125.44	3,267.9	-235.6	330.9	-310.5	0.00	0.00	0.00
3,400.0	9.67	125.44	3,366.5	-245.3	344.6	-323.3	0.00	0.00	0.00
3,500.0	9.67	125.44	3,465.1	-255.1	358.3	-336.2	0.00	0.00	0.00
3,600.0	9.67	125.44	3,563.7	-264.8	372.0	-349.0	0.00	0.00	0.00
3,700.0	9.67	125.44	3,662.2	-274.6	385.7	-361.8	0.00	0.00	0.00
3,800.0	9.67	125.44	3,760.8	-284.3	399.4	-374.7	0.00	0.00	0.00
3,900.0	9.67	125.44	3,859.4	-294.0	413.1	-387.5	0.00	0.00	0.00
4,000.0	9.67	125.44	3,958.0	-303.8	426.8	-400.4	0.00	0.00	0.00
4,100.0	9.67	125.44	4,056.6	-313.5	440.5	-413.2	0.00	0.00	0.00
4,200.0	9.67	125.44	4,155.1	-323.3	454.1	-426.1	0.00	0.00	0.00
4,300.0	9.67	125.44	4,253.7	-333.0	467.8	-438.9	0.00	0.00	0.00
4,400.0	9.67	125.44	4,352.3	-342.8	481.5	-451.7	0.00	0.00	0.00
4,500.0	9.67	125.44	4,450.9	-352.5	495.2	-464.6	0.00	0.00	0.00
4,600.0	9.67	125.44	4,549.4	-362.3	508.9	-477.4	0.00	0.00	0.00
4,700.0	9.67	125.44	4,648.0	-372.0	522.6	-490.3	0.00	0.00	0.00
4,800.0	9.67	125.44	4,746.6	-381.7	536.3	-503.1	0.00	0.00	0.00

Database:	Landmark	Local Co-ordinate Reference:	Well SRC Eberle 14-32-31NHZM
Company:	Synergy Resources	TVD Reference:	WELL @ 5045.0ft (RKB - 12')
Project:	SEC.32-T1N-R66W	MD Reference:	WELL @ 5045.0ft (RKB - 12')
Site:	SRC Eberle 14-32-31CHZM Pad	North Reference:	True
	Sec.32-T1N-R66W		
Well:	SRC Eberle 14-32-31NHZM	Survey Calculation Method:	Minimum Curvature
Wellbore:	Wellbore #1		
Design:	Plan #2 (1-2-14)		

Planned Survey									
Measured Depth (ft)	Inclination (°)	Azimuth (°)	Vertical Depth (ft)	+N/-S (ft)	+E/-W (ft)	Vertical Section (ft)	Dogleg Rate (°/100ft)	Build Rate (°/100ft)	Turn Rate (°/100ft)
4,900.0	9.67	125.44	4,845.2	-391.5	550.0	-516.0	0.00	0.00	0.00
5,000.0	9.67	125.44	4,943.8	-401.2	563.7	-528.8	0.00	0.00	0.00
5,100.0	9.67	125.44	5,042.3	-411.0	577.4	-541.6	0.00	0.00	0.00
5,200.0	9.67	125.44	5,140.9	-420.7	591.0	-554.5	0.00	0.00	0.00
5,300.0	9.67	125.44	5,239.5	-430.5	604.7	-567.3	0.00	0.00	0.00
5,400.0	9.67	125.44	5,338.1	-440.2	618.4	-580.2	0.00	0.00	0.00
5,500.0	9.67	125.44	5,436.6	-450.0	632.1	-593.0	0.00	0.00	0.00
5,600.0	9.67	125.44	5,535.2	-459.7	645.8	-605.9	0.00	0.00	0.00
5,700.0	9.67	125.44	5,633.8	-469.5	659.5	-618.7	0.00	0.00	0.00
5,800.0	9.67	125.44	5,732.4	-479.2	673.2	-631.5	0.00	0.00	0.00
5,900.0	9.67	125.44	5,831.0	-488.9	686.9	-644.4	0.00	0.00	0.00
6,000.0	9.67	125.44	5,929.5	-498.7	700.6	-657.2	0.00	0.00	0.00
6,100.0	9.67	125.44	6,028.1	-508.4	714.2	-670.1	0.00	0.00	0.00
6,191.8	9.67	125.44	6,118.6	-517.4	726.8	-681.9	0.00	0.00	0.00
6,200.0	9.51	125.44	6,126.7	-518.2	727.9	-682.9	2.00	-2.00	0.00
6,300.0	7.51	125.44	6,225.6	-526.8	740.0	-694.2	2.00	-2.00	0.00
6,400.0	5.51	125.44	6,324.9	-533.3	749.2	-702.9	2.00	-2.00	0.00
6,500.0	3.51	125.44	6,424.6	-537.9	755.6	-708.9	2.00	-2.00	0.00
6,600.0	1.51	125.44	6,524.5	-540.4	759.2	-712.2	2.00	-2.00	0.00
6,675.5	0.00	0.00	6,600.0	-541.0	760.0	-713.0	2.00	-2.00	0.00
6,700.0	0.00	0.00	6,624.5	-541.0	760.0	-713.0	0.00	0.00	0.00
6,800.0	0.00	0.00	6,724.5	-541.0	760.0	-713.0	0.00	0.00	0.00
6,844.3	0.00	0.00	6,768.8	-541.0	760.0	-713.0	0.00	0.00	0.00
KOP #2									
6,900.0	4.46	269.96	6,824.5	-541.0	757.8	-710.8	8.00	8.00	0.00
7,000.0	12.46	269.96	6,923.3	-541.0	743.1	-696.2	8.00	8.00	0.00
7,100.0	20.46	269.96	7,019.1	-541.0	714.8	-668.0	8.00	8.00	0.00
7,200.0	28.46	269.96	7,110.1	-541.1	673.5	-626.8	8.00	8.00	0.00
7,300.0	36.46	269.96	7,194.4	-541.1	619.8	-573.3	8.00	8.00	0.00
7,400.0	44.46	269.96	7,270.4	-541.2	555.0	-508.7	8.00	8.00	0.00
7,500.0	52.46	269.96	7,336.7	-541.2	480.2	-434.1	8.00	8.00	0.00
7,600.0	60.46	269.96	7,391.9	-541.3	396.9	-351.1	8.00	8.00	0.00
7,700.0	68.46	269.96	7,435.0	-541.3	306.8	-261.3	8.00	8.00	0.00
7,800.0	76.46	269.96	7,465.1	-541.4	211.5	-166.3	8.00	8.00	0.00
7,900.0	84.46	269.96	7,481.7	-541.5	113.0	-68.1	8.00	8.00	0.00
7,969.3	90.00	269.96	7,485.0	-541.5	43.8	0.8	8.00	8.00	0.00
End of Build - 7"									
8,000.0	90.00	269.96	7,485.0	-541.6	13.1	31.4	0.00	0.00	0.00
8,100.0	90.00	269.96	7,485.0	-541.6	-86.9	131.1	0.00	0.00	0.00
8,200.0	90.00	269.96	7,485.0	-541.7	-186.9	230.8	0.00	0.00	0.00
8,300.0	90.00	269.96	7,485.0	-541.8	-286.9	330.4	0.00	0.00	0.00
8,400.0	90.00	269.96	7,485.0	-541.9	-386.9	430.1	0.00	0.00	0.00
8,500.0	90.00	269.96	7,485.0	-541.9	-486.9	529.8	0.00	0.00	0.00
8,600.0	90.00	269.96	7,485.0	-542.0	-586.9	629.4	0.00	0.00	0.00
8,700.0	90.00	269.96	7,485.0	-542.1	-686.9	729.1	0.00	0.00	0.00
8,800.0	90.00	269.96	7,485.0	-542.2	-786.9	828.8	0.00	0.00	0.00
8,900.0	90.00	269.96	7,485.0	-542.2	-886.9	928.4	0.00	0.00	0.00
9,000.0	90.00	269.96	7,485.0	-542.3	-986.9	1,028.1	0.00	0.00	0.00
9,100.0	90.00	269.96	7,485.0	-542.4	-1,086.9	1,127.8	0.00	0.00	0.00
9,200.0	90.00	269.96	7,485.0	-542.5	-1,186.9	1,227.5	0.00	0.00	0.00
9,300.0	90.00	269.96	7,485.0	-542.5	-1,286.9	1,327.1	0.00	0.00	0.00
9,400.0	90.00	269.96	7,485.0	-542.6	-1,386.9	1,426.8	0.00	0.00	0.00
9,500.0	90.00	269.96	7,485.0	-542.7	-1,486.9	1,526.5	0.00	0.00	0.00

Database:	Landmark	Local Co-ordinate Reference:	Well SRC Eberle 14-32-31NHZM
Company:	Synergy Resources	TVD Reference:	WELL @ 5045.0ft (RKB - 12')
Project:	SEC.32-T1N-R66W	MD Reference:	WELL @ 5045.0ft (RKB - 12')
Site:	SRC Eberle 14-32-31CHZM Pad Sec.32-T1N-R66W	North Reference:	True
Well:	SRC Eberle 14-32-31NHZM	Survey Calculation Method:	Minimum Curvature
Wellbore:	Wellbore #1		
Design:	Plan #2 (1-2-14)		

Planned Survey									
Measured Depth (ft)	Inclination (°)	Azimuth (°)	Vertical Depth (ft)	+N/-S (ft)	+E/-W (ft)	Vertical Section (ft)	Dogleg Rate (°/100ft)	Build Rate (°/100ft)	Turn Rate (°/100ft)
9,600.0	90.00	269.96	7,485.0	-542.8	-1,586.9	1,626.1	0.00	0.00	0.00
9,700.0	90.00	269.96	7,485.0	-542.9	-1,686.9	1,725.8	0.00	0.00	0.00
9,800.0	90.00	269.96	7,485.0	-542.9	-1,786.9	1,825.5	0.00	0.00	0.00
9,900.0	90.00	269.96	7,485.0	-543.0	-1,886.9	1,925.1	0.00	0.00	0.00
10,000.0	90.00	269.96	7,485.0	-543.1	-1,986.9	2,024.8	0.00	0.00	0.00
10,100.0	90.00	269.96	7,485.0	-543.2	-2,086.9	2,124.5	0.00	0.00	0.00
10,200.0	90.00	269.96	7,485.0	-543.2	-2,186.9	2,224.1	0.00	0.00	0.00
10,300.0	90.00	269.96	7,485.0	-543.3	-2,286.9	2,323.8	0.00	0.00	0.00
10,400.0	90.00	269.96	7,485.0	-543.4	-2,386.9	2,423.5	0.00	0.00	0.00
10,500.0	90.00	269.96	7,485.0	-543.5	-2,486.9	2,523.1	0.00	0.00	0.00
10,600.0	90.00	269.96	7,485.0	-543.5	-2,586.9	2,622.8	0.00	0.00	0.00
10,700.0	90.00	269.96	7,485.0	-543.6	-2,686.9	2,722.5	0.00	0.00	0.00
10,800.0	90.00	269.96	7,485.0	-543.7	-2,786.9	2,822.1	0.00	0.00	0.00
10,900.0	90.00	269.96	7,485.0	-543.8	-2,886.9	2,921.8	0.00	0.00	0.00
11,000.0	90.00	269.96	7,485.0	-543.8	-2,986.9	3,021.5	0.00	0.00	0.00
11,100.0	90.00	269.96	7,485.0	-543.9	-3,086.9	3,121.2	0.00	0.00	0.00
11,200.0	90.00	269.96	7,485.0	-544.0	-3,186.9	3,220.8	0.00	0.00	0.00
11,300.0	90.00	269.96	7,485.0	-544.1	-3,286.9	3,320.5	0.00	0.00	0.00
11,400.0	90.00	269.96	7,485.0	-544.1	-3,386.9	3,420.2	0.00	0.00	0.00
11,500.0	90.00	269.96	7,485.0	-544.2	-3,486.9	3,519.8	0.00	0.00	0.00
11,600.0	90.00	269.96	7,485.0	-544.3	-3,586.9	3,619.5	0.00	0.00	0.00
11,700.0	90.00	269.96	7,485.0	-544.4	-3,686.9	3,719.2	0.00	0.00	0.00
11,800.0	90.00	269.96	7,485.0	-544.4	-3,786.9	3,818.8	0.00	0.00	0.00
11,900.0	90.00	269.96	7,485.0	-544.5	-3,886.9	3,918.5	0.00	0.00	0.00
12,000.0	90.00	269.96	7,485.0	-544.6	-3,986.9	4,018.2	0.00	0.00	0.00
12,100.0	90.00	269.96	7,485.0	-544.7	-4,086.9	4,117.8	0.00	0.00	0.00
12,200.0	90.00	269.96	7,485.0	-544.7	-4,186.9	4,217.5	0.00	0.00	0.00
12,300.0	90.00	269.96	7,485.0	-544.8	-4,286.9	4,317.2	0.00	0.00	0.00
12,400.0	90.00	269.96	7,485.0	-544.9	-4,386.9	4,416.8	0.00	0.00	0.00
12,500.0	90.00	269.96	7,485.0	-545.0	-4,486.9	4,516.5	0.00	0.00	0.00
12,600.0	90.00	269.96	7,485.0	-545.0	-4,586.9	4,616.2	0.00	0.00	0.00
12,700.0	90.00	269.96	7,485.0	-545.1	-4,686.9	4,715.8	0.00	0.00	0.00
12,800.0	90.00	269.96	7,485.0	-545.2	-4,786.9	4,815.5	0.00	0.00	0.00
12,900.0	90.00	269.96	7,485.0	-545.3	-4,886.9	4,915.2	0.00	0.00	0.00
13,000.0	90.00	269.96	7,485.0	-545.4	-4,986.9	5,014.9	0.00	0.00	0.00
13,100.0	90.00	269.96	7,485.0	-545.4	-5,086.9	5,114.5	0.00	0.00	0.00
13,200.0	90.00	269.96	7,485.0	-545.5	-5,186.9	5,214.2	0.00	0.00	0.00
13,300.0	90.00	269.96	7,485.0	-545.6	-5,286.9	5,313.9	0.00	0.00	0.00
13,400.0	90.00	269.96	7,485.0	-545.7	-5,386.9	5,413.5	0.00	0.00	0.00
13,500.0	90.00	269.96	7,485.0	-545.7	-5,486.9	5,513.2	0.00	0.00	0.00
13,600.0	90.00	269.96	7,485.0	-545.8	-5,586.9	5,612.9	0.00	0.00	0.00
13,700.0	90.00	269.96	7,485.0	-545.9	-5,686.9	5,712.5	0.00	0.00	0.00
13,800.0	90.00	269.96	7,485.0	-546.0	-5,786.9	5,812.2	0.00	0.00	0.00
13,900.0	90.00	269.96	7,485.0	-546.0	-5,886.9	5,911.9	0.00	0.00	0.00
14,000.0	90.00	269.96	7,485.0	-546.1	-5,986.9	6,011.5	0.00	0.00	0.00
14,100.0	90.00	269.96	7,485.0	-546.2	-6,086.9	6,111.2	0.00	0.00	0.00
14,200.0	90.00	269.96	7,485.0	-546.3	-6,186.9	6,210.9	0.00	0.00	0.00
14,300.0	90.00	269.96	7,485.0	-546.3	-6,286.9	6,310.5	0.00	0.00	0.00
14,400.0	90.00	269.96	7,485.0	-546.4	-6,386.9	6,410.2	0.00	0.00	0.00
14,500.0	90.00	269.96	7,485.0	-546.5	-6,486.9	6,509.9	0.00	0.00	0.00
14,600.0	90.00	269.96	7,485.0	-546.6	-6,586.9	6,609.5	0.00	0.00	0.00
14,645.7	90.00	269.96	7,485.0	-546.6	-6,632.6	6,655.1	0.00	0.00	0.00
BHL 814'FSL & 2193'FEL, Sec.31									

Database:	Landmark	Local Co-ordinate Reference:	Well SRC Eberle 14-32-31NHZM
Company:	Synergy Resources	TVD Reference:	WELL @ 5045.0ft (RKB - 12')
Project:	SEC.32-T1N-R66W	MD Reference:	WELL @ 5045.0ft (RKB - 12')
Site:	SRC Eberle 14-32-31CHZM Pad Sec.32-T1N-R66W	North Reference:	True
Well:	SRC Eberle 14-32-31NHZM	Survey Calculation Method:	Minimum Curvature
Wellbore:	Wellbore #1		
Design:	Plan #2 (1-2-14)		

Planned Survey									
Measured Depth (ft)	Inclination (°)	Azimuth (°)	Vertical Depth (ft)	+N/-S (ft)	+E/-W (ft)	Vertical Section (ft)	Dogleg Rate (°/100ft)	Build Rate (°/100ft)	Turn Rate (°/100ft)

Casing Points					
Measured Depth (ft)	Vertical Depth (ft)	Name	Casing Diameter (")	Hole Diameter (")	
7,969.3	7,485.0	7"	7	7-1/2	

Plan Annotations				
Measured Depth (ft)	Vertical Depth (ft)	Local Coordinates		Comment
		+N/-S (ft)	+E/-W (ft)	
400.0	400.0	0.0	0.0	KOP #1
6,844.3	6,768.8	-541.0	760.0	KOP #2
7,969.3	7,485.0	-541.5	43.8	End of Build



Synergy Resources

SEC.32-T1N-R66W

SRC Eberle 14-32-31CHZM Pad Sec.32-T1N-R66W

SRC Eberle 14-32-31NHZM

Wellbore #1

Plan #2 (1-2-14)

Anticollision Report

03 January, 2014

SRC Eberle 14-32-31CHZM Pad Sec.32-T1N-R66W - SRC Eberle 13-32CHZ - Wellbore #1 - Plan #1 (1)													Offset Site Error:	0.0 ft
Survey Program: 0-MWD													Offset Well Error:	0.0 ft
Reference		Offset		Semi Major Axis			Distance		Between		Minimum	Separation	Warning	
Measured Depth (ft)	Vertical Depth (ft)	Measured Depth (ft)	Vertical Depth (ft)	Reference (ft)	Offset (ft)	Highside Toolface (°)	Offset Wellbore Centre +N/-S (ft)	+E/-W (ft)	Centres (ft)	Ellipses (ft)	Separation (ft)	Factor		
1,600.0	1,592.1	1,597.0	1,595.9	4.1	3.5	-178.72	15.7	-16.6	143.4	136.5	6.86	20.910		
1,700.0	1,690.7	1,696.7	1,694.9	4.5	3.7	-175.03	21.4	-7.0	156.2	148.8	7.35	21.241		
1,800.0	1,789.3	1,796.1	1,793.6	4.8	4.0	-171.34	28.0	4.2	169.0	161.1	7.87	21.463		
1,900.0	1,887.8	1,895.4	1,891.7	5.2	4.3	-167.67	35.4	16.8	182.1	173.6	8.43	21.598		
2,000.0	1,986.4	1,994.3	1,989.3	5.6	4.6	-164.00	43.6	30.8	195.5	186.5	9.02	21.665		
2,100.0	2,085.0	2,092.8	2,086.2	6.0	4.9	-160.39	52.6	46.1	209.5	199.8	9.66	21.690		
2,200.0	2,183.6	2,191.0	2,182.7	6.4	5.2	-157.14	61.8	61.7	224.2	213.8	10.32	21.724		
2,300.0	2,282.1	2,289.1	2,279.2	6.7	5.6	-154.30	70.9	77.2	239.5	228.5	11.00	21.776		
2,400.0	2,380.7	2,387.3	2,375.6	7.1	5.9	-151.80	80.1	92.8	255.3	243.6	11.69	21.842		
2,500.0	2,479.3	2,485.4	2,472.1	7.5	6.3	-149.59	89.3	108.4	271.6	259.2	12.39	21.918		
2,600.0	2,577.9	2,583.6	2,568.6	7.9	6.7	-147.63	98.4	124.0	288.2	275.1	13.10	22.001		
2,700.0	2,676.5	2,681.7	2,665.1	8.3	7.0	-145.89	107.6	139.6	305.1	291.3	13.81	22.089		
2,800.0	2,775.0	2,779.9	2,761.5	8.7	7.4	-144.32	116.7	155.2	322.2	307.7	14.53	22.180		
2,900.0	2,873.6	2,878.1	2,858.0	9.1	7.8	-142.92	125.9	170.8	339.6	324.3	15.25	22.272		
3,000.0	2,972.2	2,976.2	2,954.5	9.5	8.2	-141.65	135.1	186.3	357.1	341.1	15.97	22.365		
3,100.0	3,070.8	3,074.4	3,051.0	9.9	8.6	-140.50	144.2	201.9	374.8	358.1	16.69	22.456		
3,200.0	3,169.4	3,172.5	3,147.5	10.3	8.9	-139.46	153.4	217.5	392.6	375.2	17.41	22.547		
3,300.0	3,267.9	3,270.7	3,243.9	10.7	9.3	-138.50	162.5	233.1	410.6	392.4	18.14	22.636		
3,400.0	3,366.5	3,368.8	3,340.4	11.0	9.7	-137.63	171.7	248.7	428.6	409.7	18.86	22.722		
3,500.0	3,465.1	3,467.0	3,436.9	11.4	10.1	-136.82	180.9	264.3	446.7	427.2	19.59	22.807		
3,600.0	3,563.7	3,565.1	3,533.4	11.8	10.5	-136.08	190.0	279.9	465.0	444.6	20.31	22.889		
3,700.0	3,662.2	3,663.3	3,629.8	12.2	10.9	-135.39	199.2	295.4	483.2	462.2	21.04	22.968		
3,800.0	3,760.8	3,761.5	3,726.3	12.6	11.3	-134.76	208.4	311.0	501.6	479.8	21.77	23.045		
3,900.0	3,859.4	3,859.6	3,822.8	13.0	11.7	-134.16	217.5	326.6	520.0	497.5	22.49	23.119		
4,000.0	3,958.0	3,957.8	3,919.3	13.4	12.1	-133.61	226.7	342.2	538.4	515.2	23.22	23.191		
4,100.0	4,056.6	4,055.9	4,015.7	13.8	12.5	-133.10	235.8	357.8	556.9	533.0	23.94	23.260		
4,200.0	4,155.1	4,154.1	4,112.2	14.2	12.9	-132.62	245.0	373.4	575.5	550.8	24.67	23.327		
4,300.0	4,253.7	4,252.2	4,208.7	14.6	13.3	-132.17	254.2	389.0	594.0	568.6	25.39	23.392		
4,400.0	4,352.3	4,350.4	4,305.2	15.0	13.6	-131.74	263.3	404.5	612.6	586.5	26.12	23.454		
4,500.0	4,450.9	4,448.5	4,401.6	15.4	14.0	-131.34	272.5	420.1	631.3	604.4	26.85	23.515		
4,600.0	4,549.4	4,546.7	4,498.1	15.8	14.4	-130.97	281.7	435.7	649.9	622.4	27.57	23.573		
4,700.0	4,648.0	4,644.9	4,594.6	16.2	14.8	-130.61	290.8	451.3	668.6	640.3	28.30	23.629		
4,800.0	4,746.6	4,743.0	4,691.1	16.6	15.2	-130.27	300.0	466.9	687.3	658.3	29.02	23.683		
4,900.0	4,845.2	4,841.2	4,787.5	17.0	15.6	-129.96	309.1	482.5	706.1	676.3	29.75	23.735		
5,000.0	4,943.8	4,939.3	4,884.0	17.4	16.0	-129.65	318.3	498.0	724.8	694.4	30.47	23.785		
5,100.0	5,042.3	5,037.5	4,980.5	17.7	16.4	-129.37	327.5	513.6	743.6	712.4	31.20	23.834		
5,200.0	5,140.9	5,135.6	5,077.0	18.1	16.8	-129.10	336.6	529.2	762.4	730.5	31.92	23.881		
5,300.0	5,239.5	5,233.8	5,173.5	18.5	17.2	-128.84	345.8	544.8	781.2	748.6	32.65	23.927		
5,400.0	5,338.1	5,331.9	5,269.9	18.9	17.6	-128.59	355.0	560.4	800.0	766.7	33.38	23.971		
5,500.0	5,436.6	5,430.1	5,366.4	19.3	18.0	-128.35	364.1	576.0	818.9	784.8	34.10	24.013		
5,600.0	5,535.2	5,528.3	5,462.9	19.7	18.4	-128.13	373.3	591.6	837.7	802.9	34.83	24.055		
5,700.0	5,633.8	5,626.4	5,559.4	20.1	18.8	-127.91	382.4	607.1	856.6	821.0	35.55	24.094		
5,800.0	5,732.4	5,724.6	5,655.8	20.5	19.2	-127.71	391.6	622.7	875.4	839.2	36.28	24.133		
5,900.0	5,831.0	5,822.7	5,752.3	20.9	19.6	-127.51	400.8	638.3	894.3	857.3	37.00	24.171		
6,000.0	5,929.5	5,920.9	5,848.8	21.3	20.0	-127.32	409.9	653.9	913.2	875.5	37.73	24.207		
6,100.0	6,028.1	6,019.0	5,945.3	21.7	20.4	-127.14	419.1	669.5	932.1	893.7	38.45	24.242		
6,200.0	6,126.7	6,117.2	6,041.7	22.1	20.8	-126.99	428.3	685.1	951.0	911.8	39.18	24.275		
6,300.0	6,225.6	6,215.5	6,138.4	22.4	21.3	-127.01	437.4	700.7	968.7	928.9	39.86	24.304		
6,400.0	6,324.9	6,314.0	6,235.2	22.6	21.7	-126.84	446.6	716.3	984.4	943.9	40.50	24.304		
6,500.0	6,424.6	6,425.2	6,344.6	22.8	22.1	-126.47	456.5	733.2	997.7	956.6	41.10	24.273		
6,600.0	6,524.5	6,545.2	6,463.4	22.9	22.4	-126.03	464.9	747.5	1,007.2	965.6	41.59	24.217		

Company:	Synergy Resources	Local Co-ordinate Reference:	Well SRC Eberle 14-32-31NHZM
Project:	SEC.32-T1N-R66W	TVD Reference:	WELL @ 5045.0ft (RKB - 12')
Reference Site:	SRC Eberle 14-32-31CHZM Pad Sec.32-T1N-R66W	MD Reference:	WELL @ 5045.0ft (RKB - 12')
Site Error:	0.0ft	North Reference:	True
Reference Well:	SRC Eberle 14-32-31NHZM	Survey Calculation Method:	Minimum Curvature
Well Error:	0.0ft	Output errors are at	2.00 sigma
Reference Wellbore	Wellbore #1	Database:	Landmark
Reference Design:	Plan #2 (1-2-14)	Offset TVD Reference:	Offset Datum

Offset Design													Offset Site Error:	0.0 ft
Survey Program: 0-MWD													Offset Well Error:	0.0 ft
Measured Depth (ft)	Vertical Depth (ft)	Measured Depth (ft)	Vertical Depth (ft)	Reference	Offset	Semi Major Axis	Highside Toolface (°)	Offset Wellbore Centre +N/-S (ft)	Offset Wellbore Centre +E/-W (ft)	Between Centres (ft)	Between Ellipses (ft)	Minimum Separation (ft)	Separation Factor	Warning
6,700.0	6,624.5	6,666.2	6,583.9	23.1	22.6	-0.14		470.9	757.5	1,012.6	976.2	36.38	27.831	
6,800.0	6,724.5	6,787.9	6,705.4	23.2	22.9	0.18		474.2	763.2	1,015.3	978.6	36.74	27.638	
6,900.0	6,824.5	6,905.0	6,822.5	23.3	23.0	90.42		475.0	764.6	1,016.0	973.4	42.63	23.836	
7,000.0	6,923.3	7,003.8	6,921.3	23.3	23.2	91.22		475.0	764.6	1,016.2	973.5	42.78	23.757	
7,100.0	7,019.1	7,106.0	7,023.2	23.2	23.2	92.44		475.0	757.9	1,016.9	974.2	42.74	23.795	
7,200.0	7,110.1	7,211.9	7,126.7	23.0	23.2	93.63		475.0	735.8	1,018.1	975.6	42.47	23.970	
7,300.0	7,194.4	7,321.5	7,229.2	22.8	23.0	94.76		474.9	697.2	1,019.6	977.6	42.05	24.245	
7,400.0	7,270.4	7,435.0	7,327.7	22.6	22.7	95.82		474.8	641.2	1,021.4	979.8	41.58	24.561	
7,500.0	7,336.7	7,552.3	7,419.0	22.4	22.4	96.77		474.7	567.7	1,023.2	982.0	41.23	24.819	
7,600.0	7,391.9	7,673.2	7,499.2	22.3	22.2	97.58		474.6	477.4	1,024.9	983.7	41.20	24.880	
7,700.0	7,435.0	7,797.3	7,564.6	22.3	22.1	98.22		474.5	372.2	1,026.4	984.7	41.71	24.607	
7,800.0	7,465.1	7,923.8	7,611.6	22.6	22.4	98.66		474.3	254.9	1,027.5	984.5	42.98	23.905	
7,900.0	7,481.7	8,051.8	7,637.4	23.1	23.2	98.88		474.2	129.7	1,028.0	982.9	45.03	22.828	
8,000.0	7,485.0	8,169.9	7,642.0	24.1	24.5	98.90		474.0	11.8	1,027.9	980.3	47.66	21.568	
8,100.0	7,485.0	8,269.9	7,642.0	25.4	25.9	98.90		473.9	-88.2	1,027.9	977.3	50.58	20.322	
8,200.0	7,485.0	8,369.9	7,642.0	27.0	27.5	98.90		473.7	-188.2	1,027.8	973.9	53.90	19.069	
8,300.0	7,485.0	8,469.9	7,642.0	28.9	29.3	98.90		473.6	-288.2	1,027.8	970.2	57.56	17.855	
8,400.0	7,485.0	8,569.9	7,642.0	30.9	31.3	98.90		473.5	-388.2	1,027.7	966.2	61.51	16.709	
8,500.0	7,485.0	8,669.9	7,642.0	33.0	33.4	98.90		473.4	-488.2	1,027.7	962.0	65.69	15.645	
8,600.0	7,485.0	8,769.9	7,642.0	35.2	35.6	98.90		473.2	-588.2	1,027.6	957.6	70.05	14.669	
8,700.0	7,485.0	8,869.9	7,642.0	37.6	37.9	98.90		473.1	-688.2	1,027.6	953.0	74.58	13.779	
8,800.0	7,485.0	8,969.9	7,642.0	39.9	40.2	98.90		473.0	-788.2	1,027.5	948.3	79.23	12.969	
8,900.0	7,485.0	9,069.9	7,642.0	42.4	42.6	98.90		472.8	-888.2	1,027.5	943.5	83.99	12.233	
9,000.0	7,485.0	9,169.9	7,642.0	44.8	45.1	98.90		472.7	-988.2	1,027.4	938.6	88.85	11.564	
9,100.0	7,485.0	9,269.9	7,642.0	47.3	47.5	98.90		472.6	-1,088.2	1,027.4	933.6	93.77	10.956	
9,200.0	7,485.0	9,369.9	7,642.0	49.9	50.1	98.90		472.4	-1,188.2	1,027.3	928.5	98.77	10.401	
9,300.0	7,485.0	9,469.9	7,642.0	52.5	52.6	98.90		472.3	-1,288.2	1,027.2	923.4	103.82	9.895	
9,400.0	7,485.0	9,569.9	7,642.0	55.0	55.2	98.90		472.2	-1,388.2	1,027.2	918.3	108.92	9.431	
9,500.0	7,485.0	9,669.9	7,642.0	57.7	57.8	98.91		472.1	-1,488.2	1,027.1	913.1	114.06	9.006	
9,600.0	7,485.0	9,769.9	7,642.0	60.3	60.4	98.91		471.9	-1,588.2	1,027.1	907.9	119.23	8.614	
9,700.0	7,485.0	9,869.9	7,642.0	62.9	63.0	98.91		471.8	-1,688.2	1,027.0	902.6	124.44	8.253	
9,800.0	7,485.0	9,969.9	7,642.0	65.6	65.7	98.91		471.7	-1,788.2	1,027.0	897.3	129.67	7.920	
9,900.0	7,485.0	10,069.9	7,642.0	68.2	68.3	98.91		471.5	-1,888.2	1,026.9	892.0	134.93	7.610	
10,000.0	7,485.0	10,169.9	7,642.0	70.9	71.0	98.91		471.4	-1,988.2	1,026.9	886.6	140.22	7.323	
10,100.0	7,485.0	10,269.9	7,642.0	73.6	73.7	98.91		471.3	-2,088.2	1,026.8	881.3	145.52	7.056	
10,200.0	7,485.0	10,369.9	7,642.0	76.3	76.4	98.91		471.1	-2,188.2	1,026.8	875.9	150.84	6.807	
10,300.0	7,485.0	10,469.9	7,642.0	79.0	79.1	98.91		471.0	-2,288.2	1,026.7	870.5	156.17	6.574	
10,400.0	7,485.0	10,569.9	7,642.0	81.7	81.8	98.91		470.9	-2,388.2	1,026.7	865.1	161.52	6.356	
10,500.0	7,485.0	10,669.9	7,642.0	84.4	84.5	98.91		470.7	-2,488.2	1,026.6	859.7	166.88	6.152	
10,600.0	7,485.0	10,769.9	7,642.0	87.2	87.2	98.91		470.6	-2,588.2	1,026.5	854.3	172.25	5.960	
10,700.0	7,485.0	10,869.9	7,642.0	89.9	89.9	98.91		470.5	-2,688.2	1,026.5	848.9	177.63	5.779	
10,800.0	7,485.0	10,969.9	7,642.0	92.6	92.6	98.91		470.4	-2,788.2	1,026.4	843.4	183.03	5.608	
10,900.0	7,485.0	11,069.9	7,642.0	95.3	95.4	98.91		470.2	-2,888.2	1,026.4	838.0	188.43	5.447	
11,000.0	7,485.0	11,169.9	7,642.0	98.1	98.1	98.91		470.1	-2,988.2	1,026.3	832.5	193.84	5.295	
11,100.0	7,485.0	11,269.9	7,642.0	100.8	100.8	98.91		470.0	-3,088.2	1,026.3	827.0	199.25	5.151	
11,200.0	7,485.0	11,369.9	7,642.0	103.6	103.6	98.91		469.8	-3,188.2	1,026.2	821.5	204.68	5.014	
11,300.0	7,485.0	11,469.9	7,642.0	106.3	106.3	98.91		469.7	-3,288.2	1,026.2	816.1	210.11	4.884	
11,400.0	7,485.0	11,569.9	7,642.0	109.1	109.1	98.91		469.6	-3,388.2	1,026.1	810.6	215.54	4.761	
11,500.0	7,485.0	11,669.9	7,642.0	111.8	111.8	98.91		469.4	-3,488.2	1,026.1	805.1	220.98	4.643	
11,600.0	7,485.0	11,769.9	7,642.0	114.6	114.6	98.92		469.3	-3,588.2	1,026.0	799.6	226.43	4.531	
11,700.0	7,485.0	11,869.9	7,642.0	117.3	117.3	98.92		469.2	-3,688.2	1,025.9	794.1	231.88	4.424	

CC - Min centre to center distance or convergent point, SF - min separation factor, ES - min ellipse separation

SRC Eberle 14-32-31CHZM Pad Sec.32-T1N-R66W - SRC Eberle 13-32CHZ - Wellbore #1 - Plan #1 (1)													Offset Site Error:	0.0 ft
Survey Program: 0-MWD													Offset Well Error:	0.0 ft
Reference		Offset		Semi Major Axis			Distance							
Measured Depth	Vertical Depth	Measured Depth	Vertical Depth	Reference	Offset	Highside Toolface	Offset Wellbore Centre		Between Centres	Between Ellipses	Minimum Separation	Separation Factor	Warning	
Depth (ft)	Depth (ft)	Depth (ft)	Depth (ft)	(ft)	(ft)	(°)	+N/-S (ft)	+E/-W (ft)	(ft)	(ft)	(ft)			
11,800.0	7,485.0	11,969.9	7,642.0	120.1	120.1	98.92	469.1	-3,788.2	1,025.9	788.6	237.33	4.323		
11,900.0	7,485.0	12,069.9	7,642.0	122.9	122.8	98.92	468.9	-3,888.2	1,025.8	783.0	242.79	4.225		
11,962.9	7,485.0	12,132.8	7,642.0	124.6	124.6	98.92	468.8	-3,951.2	1,025.8	779.6	246.23	4.166		
12,000.0	7,485.0	12,146.0	7,642.0	125.6	124.9	98.92	468.8	-3,964.3	1,026.1	778.5	247.60	4.144		
12,100.0	7,485.0	12,146.0	7,642.0	128.4	124.9	98.92	468.8	-3,964.3	1,033.2	782.9	250.33	4.127	SF	
12,200.0	7,485.0	12,146.0	7,642.0	131.2	124.9	98.92	468.8	-3,964.3	1,049.8	796.8	253.07	4.148		
12,300.0	7,485.0	12,146.0	7,642.0	133.9	124.9	98.92	468.8	-3,964.3	1,075.6	819.8	255.81	4.205		
12,400.0	7,485.0	12,146.0	7,642.0	136.7	124.9	98.92	468.8	-3,964.3	1,109.7	851.2	258.54	4.292		
12,500.0	7,485.0	12,146.0	7,642.0	139.5	124.9	98.92	468.8	-3,964.3	1,151.6	890.3	261.28	4.408		
12,600.0	7,485.0	12,146.0	7,642.0	142.2	124.9	98.92	468.8	-3,964.3	1,200.4	936.3	264.03	4.546		
12,700.0	7,485.0	12,146.0	7,642.0	145.0	124.9	98.92	468.8	-3,964.3	1,255.2	988.4	266.77	4.705		
12,800.0	7,485.0	12,146.0	7,642.0	147.8	124.9	98.92	468.8	-3,964.3	1,315.4	1,045.9	269.51	4.881		
12,900.0	7,485.0	12,146.0	7,642.0	150.6	124.9	98.92	468.8	-3,964.3	1,380.2	1,107.9	272.25	5.069		
13,000.0	7,485.0	12,146.0	7,642.0	153.3	124.9	98.92	468.8	-3,964.3	1,449.0	1,174.0	275.00	5.269		
13,100.0	7,485.0	12,146.0	7,642.0	156.1	124.9	98.92	468.8	-3,964.3	1,521.3	1,243.5	277.75	5.477		
13,200.0	7,485.0	12,146.0	7,642.0	158.9	124.9	98.92	468.8	-3,964.3	1,596.5	1,316.1	280.49	5.692		
13,300.0	7,485.0	12,146.0	7,642.0	161.7	124.9	98.92	468.8	-3,964.3	1,674.4	1,391.2	283.24	5.912		
13,400.0	7,485.0	12,146.0	7,642.0	164.5	124.9	98.92	468.8	-3,964.3	1,754.5	1,468.5	285.99	6.135		
13,500.0	7,485.0	12,146.0	7,642.0	167.2	124.9	98.92	468.8	-3,964.3	1,836.6	1,547.8	288.74	6.361		
13,600.0	7,485.0	12,146.0	7,642.0	170.0	124.9	98.92	468.8	-3,964.3	1,920.3	1,628.8	291.49	6.588		
13,700.0	7,485.0	12,146.0	7,642.0	172.8	124.9	98.92	468.8	-3,964.3	2,005.6	1,711.3	294.24	6.816		
13,800.0	7,485.0	12,146.0	7,642.0	175.6	124.9	98.92	468.8	-3,964.3	2,092.1	1,795.1	296.99	7.044		
13,900.0	7,485.0	12,146.0	7,642.0	178.4	124.9	98.92	468.8	-3,964.3	2,179.8	1,880.1	299.74	7.272		
14,000.0	7,485.0	12,146.0	7,642.0	181.2	124.9	98.92	468.8	-3,964.3	2,268.6	1,966.1	302.50	7.499		
14,100.0	7,485.0	12,146.0	7,642.0	183.9	124.9	98.92	468.8	-3,964.3	2,358.2	2,052.9	305.25	7.725		
14,200.0	7,485.0	12,146.0	7,642.0	186.7	124.9	98.92	468.8	-3,964.3	2,448.6	2,140.6	308.01	7.950		
14,300.0	7,485.0	12,146.0	7,642.0	189.5	124.9	98.92	468.8	-3,964.3	2,539.8	2,229.0	310.76	8.173		
14,400.0	7,485.0	12,146.0	7,642.0	192.3	124.9	98.92	468.8	-3,964.3	2,631.6	2,318.0	313.51	8.394		
14,500.0	7,485.0	12,146.0	7,642.0	195.1	124.9	98.92	468.8	-3,964.3	2,723.9	2,407.7	316.27	8.613		
14,600.0	7,485.0	12,146.0	7,642.0	197.9	124.9	98.92	468.8	-3,964.3	2,816.8	2,497.8	319.03	8.829		
14,645.7	7,485.0	12,146.0	7,642.0	199.2	124.9	98.92	468.8	-3,964.3	2,859.4	2,539.2	320.29	8.928		

Offset Design													Offset Site Error:		0.0 ft
Survey Program: 0-MWD													Offset Well Error:		0.0 ft
Reference		Offset		Semi Major Axis			Distance								
Measured Depth	Vertical Depth	Measured Depth	Vertical Depth	Reference	Offset	Highside Toolface	Offset Wellbore Centre		Between Centres	Between Ellipses	Minimum Separation	Separation Factor	Warning		
(ft)	(ft)	(ft)	(ft)	(ft)	(ft)	(°)	+N/-S (ft)	+E/-W (ft)	(ft)	(ft)	(ft)				
0.0	0.0	0.0	0.0	0.0	0.0	-89.98	0.0	-20.7	20.8						
100.0	100.0	99.0	99.0	0.1	0.1	-89.98	0.0	-20.7	20.7	20.5	0.22	92.696			
200.0	200.0	199.0	199.0	0.3	0.3	-89.98	0.0	-20.7	20.7	20.1	0.67	30.847			
300.0	300.0	299.0	299.0	0.6	0.6	-89.98	0.0	-20.7	20.7	19.6	1.12	18.484			
400.0	400.0	399.0	399.0	0.8	0.8	-89.98	0.0	-20.7	20.7	19.2	1.57	13.195	CC, ES		
500.0	500.0	499.0	499.0	1.0	1.0	145.93	0.0	-20.7	21.4	19.4	2.00	10.723			
600.0	600.0	599.0	599.0	1.2	1.2	149.47	0.0	-20.7	23.7	21.2	2.42	9.777			
700.0	699.9	698.9	698.9	1.4	1.5	154.07	0.0	-20.7	27.5	24.7	2.85	9.651			
800.0	799.7	798.7	798.7	1.6	1.7	158.67	0.0	-20.7	33.1	29.8	3.29	10.072			
900.0	899.4	898.9	898.9	1.9	1.9	164.93	1.2	-19.5	39.8	36.1	3.72	10.695			
1,000.0	998.9	998.9	998.8	2.1	2.1	173.71	5.0	-15.9	47.5	43.4	4.16	11.439			
1,100.0	1,098.3	1,098.3	1,097.8	2.4	2.4	-176.65	11.2	-9.9	57.4	52.8	4.61	12.461			
1,200.0	1,197.4	1,197.0	1,195.7	2.7	2.6	-167.41	19.8	-1.6	70.2	65.1	5.09	13.802			
1,300.0	1,296.3	1,294.7	1,292.2	3.0	2.9	-159.28	30.6	8.9	86.5	80.9	5.61	15.414			
1,400.0	1,394.9	1,391.1	1,387.0	3.4	3.2	-152.47	43.7	21.5	106.5	100.3	6.19	17.192			
1,500.0	1,493.5	1,487.7	1,481.3	3.7	3.5	-146.96	58.4	35.8	128.7	121.9	6.82	18.871			
1,600.0	1,592.1	1,584.5	1,575.9	4.1	3.9	-143.02	73.3	50.1	151.8	144.4	7.47	20.338			
1,700.0	1,690.7	1,681.4	1,670.5	4.5	4.3	-140.13	88.2	64.5	175.4	167.3	8.12	21.605			
1,800.0	1,789.3	1,778.2	1,765.1	4.8	4.7	-137.93	103.0	78.9	199.4	190.6	8.78	22.699			
1,900.0	1,887.8	1,875.1	1,859.7	5.2	5.1	-136.19	117.9	93.2	223.5	214.1	9.45	23.648			
2,000.0	1,986.4	1,971.9	1,954.3	5.6	5.5	-134.80	132.8	107.6	247.8	237.7	10.13	24.475			
2,100.0	2,085.0	2,068.7	2,048.9	6.0	5.9	-133.65	147.6	122.0	272.2	261.4	10.80	25.200			
2,200.0	2,183.6	2,165.6	2,143.6	6.4	6.3	-132.69	162.5	136.4	296.8	285.3	11.48	25.839			
2,300.0	2,282.1	2,262.4	2,238.2	6.7	6.7	-131.88	177.3	150.7	321.3	309.2	12.17	26.407			
2,400.0	2,380.7	2,359.3	2,332.8	7.1	7.1	-131.18	192.2	165.1	345.9	333.1	12.85	26.913			
2,500.0	2,479.3	2,456.1	2,427.4	7.5	7.6	-130.58	207.1	179.5	370.6	357.1	13.54	27.366			
2,600.0	2,577.9	2,552.9	2,522.0	7.9	8.0	-130.05	221.9	193.8	395.3	381.1	14.23	27.775			
2,700.0	2,676.5	2,649.8	2,616.6	8.3	8.4	-129.58	236.8	208.2	420.0	405.1	14.92	28.145			
2,800.0	2,775.0	2,746.6	2,711.2	8.7	8.9	-129.17	251.7	222.6	444.8	429.2	15.62	28.482			
2,900.0	2,873.6	2,843.5	2,805.8	9.1	9.3	-128.80	266.5	236.9	469.6	453.3	16.31	28.789			
3,000.0	2,972.2	2,940.3	2,900.4	9.5	9.7	-128.46	281.4	251.3	494.3	477.3	17.01	29.070			
3,100.0	3,070.8	3,037.1	2,995.0	9.9	10.2	-128.16	296.3	265.7	519.1	501.4	17.70	29.329			
3,200.0	3,169.4	3,134.0	3,089.6	10.3	10.6	-127.89	311.1	280.1	544.0	525.6	18.40	29.567			
3,300.0	3,267.9	3,230.8	3,184.3	10.7	11.0	-127.64	326.0	294.4	568.8	549.7	19.09	29.788			
3,400.0	3,366.5	3,327.7	3,278.9	11.0	11.5	-127.41	340.8	308.8	593.6	573.8	19.79	29.992			
3,500.0	3,465.1	3,424.5	3,373.5	11.4	11.9	-127.20	355.7	323.2	618.5	598.0	20.49	30.182			
3,600.0	3,563.7	3,521.4	3,468.1	11.8	12.3	-127.00	370.6	337.5	643.3	622.1	21.19	30.359			
3,700.0	3,662.2	3,618.2	3,562.7	12.2	12.8	-126.82	385.4	351.9	668.2	646.3	21.89	30.524			
3,800.0	3,760.8	3,715.0	3,657.3	12.6	13.2	-126.65	400.3	366.3	693.0	670.4	22.59	30.679			
3,900.0	3,859.4	3,811.9	3,751.9	13.0	13.6	-126.50	415.2	380.7	717.9	694.6	23.29	30.824			
4,000.0	3,958.0	3,908.7	3,846.5	13.4	14.1	-126.35	430.0	395.0	742.8	718.8	23.99	30.961			
4,100.0	4,056.6	4,005.6	3,941.1	13.8	14.5	-126.22	444.9	409.4	767.6	742.9	24.69	31.089			
4,200.0	4,155.1	4,102.4	4,035.7	14.2	15.0	-126.09	459.8	423.8	792.5	767.1	25.39	31.210			
4,300.0	4,253.7	4,199.2	4,130.3	14.6	15.4	-125.97	474.6	438.1	817.4	791.3	26.09	31.324			
4,400.0	4,352.3	4,296.1	4,224.9	15.0	15.8	-125.86	489.5	452.5	842.3	815.5	26.80	31.432			
4,500.0	4,450.9	4,392.9	4,319.6	15.4	16.3	-125.75	504.3	466.9	867.2	839.7	27.50	31.535			
4,600.0	4,549.4	4,489.8	4,414.2	15.8	16.7	-125.65	519.2	481.2	892.1	863.9	28.20	31.632			
4,700.0	4,648.0	4,586.6	4,508.8	16.2	17.2	-125.56	534.1	495.6	917.0	888.1	28.90	31.724			
4,800.0	4,746.6	4,683.4	4,603.4	16.6	17.6	-125.47	548.9	510.0	941.9	912.2	29.61	31.812			
4,900.0	4,845.2	4,780.3	4,698.0	17.0	18.0	-125.38	563.8	524.4	966.8	936.4	30.31	31.895			
5,000.0	4,943.8	4,877.1	4,792.6	17.4	18.5	-125.30	578.7	538.7	991.7	960.6	31.01	31.974			

Offset Design											SRC Eberle 14-32-31CHZM Pad Sec.32-T1N-R66W - SRC Eberle 13-32NHZ - Wellbore #1 - Plan #1 (1		Offset Site Error:	0.0 ft
Survey Program: 0-MWD													Offset Well Error:	0.0 ft
Reference		Offset		Semi Major Axis			Distance							
Measured Depth	Vertical Depth	Measured Depth	Vertical Depth	Reference	Offset	Highside Toolface	Offset Wellbore Centre	Between Centres	Between Ellipses	Minimum Separation	Separation Factor	Warning		
(ft)	(ft)	(ft)	(ft)	(ft)	(ft)	(°)	+N/-S (ft)	+E/-W (ft)	(ft)	(ft)	(ft)			
5,100.0	5,042.3	4,974.0	4,887.2	17.7	18.9	-125.22	593.5	553.1	1,016.6	984.8	31.72	32.050		
5,200.0	5,140.9	5,070.8	4,981.8	18.1	19.4	-125.15	608.4	567.5	1,041.5	1,009.0	32.42	32.123		
5,300.0	5,239.5	5,167.7	5,076.4	18.5	19.8	-125.08	623.3	581.8	1,066.4	1,033.2	33.13	32.192		
5,400.0	5,338.1	5,264.5	5,171.0	18.9	20.3	-125.01	638.1	596.2	1,091.3	1,057.4	33.83	32.258		
5,500.0	5,436.6	5,361.3	5,265.6	19.3	20.7	-124.95	653.0	610.6	1,116.2	1,081.6	34.53	32.321		
5,600.0	5,535.2	5,458.2	5,360.2	19.7	21.1	-124.89	667.8	624.9	1,141.1	1,105.8	35.24	32.382		
5,700.0	5,633.8	5,555.0	5,454.9	20.1	21.6	-124.83	682.7	639.3	1,166.0	1,130.0	35.94	32.440		
5,800.0	5,732.4	5,651.9	5,549.5	20.5	22.0	-124.77	697.6	653.7	1,190.9	1,154.3	36.65	32.496		
5,900.0	5,831.0	5,748.7	5,644.1	20.9	22.5	-124.72	712.4	668.1	1,215.8	1,178.5	37.35	32.550		
6,000.0	5,929.5	5,845.5	5,738.7	21.3	22.9	-124.67	727.3	682.4	1,240.7	1,202.7	38.06	32.602		
6,100.0	6,028.1	5,942.4	5,833.3	21.7	23.4	-124.62	742.2	696.8	1,265.6	1,226.9	38.76	32.651		
6,200.0	6,126.7	6,039.2	5,927.9	22.1	23.8	-124.61	757.0	711.2	1,290.5	1,251.1	39.47	32.695		
6,300.0	6,225.6	6,153.6	6,039.8	22.4	24.3	-124.87	774.2	727.8	1,314.1	1,273.9	40.20	32.687		
6,400.0	6,324.9	6,300.8	6,184.7	22.6	24.8	-125.02	792.3	745.2	1,332.9	1,292.0	40.89	32.600		
6,500.0	6,424.6	6,450.3	6,333.2	22.8	25.1	-125.12	805.1	757.6	1,346.0	1,304.5	41.44	32.478		
6,600.0	6,524.5	6,601.4	6,483.9	22.9	25.4	-125.17	812.3	764.6	1,353.3	1,311.4	41.90	32.299		
6,700.0	6,624.5	6,741.0	6,623.5	23.1	25.6	0.27	814.0	766.3	1,355.0	1,314.8	40.24	33.670		
6,800.0	6,724.5	6,841.0	6,723.5	23.2	25.7	0.27	814.0	766.3	1,355.0	1,314.5	40.52	33.438		
6,900.0	6,824.5	6,941.7	6,824.1	23.3	25.8	90.30	814.0	763.9	1,355.0	1,312.3	42.74	31.702		
7,000.0	6,923.3	7,042.7	6,923.9	23.3	25.8	90.28	814.0	748.6	1,355.0	1,312.3	42.72	31.718		
7,100.0	7,019.1	7,143.8	7,020.6	23.2	25.7	90.26	813.9	719.4	1,355.0	1,312.5	42.48	31.897		
7,200.0	7,110.1	7,244.7	7,112.0	23.0	25.5	90.23	813.9	677.0	1,355.0	1,312.9	42.09	32.193		
7,300.0	7,194.4	7,345.5	7,196.6	22.8	25.2	90.20	813.8	622.2	1,354.9	1,313.3	41.64	32.536		
7,400.0	7,270.4	7,446.2	7,272.5	22.6	24.9	90.16	813.7	556.2	1,354.9	1,313.6	41.28	32.824		
7,500.0	7,336.7	7,546.7	7,338.3	22.4	24.6	90.12	813.6	480.4	1,354.8	1,313.7	41.15	32.927		
7,600.0	7,391.9	7,647.1	7,392.8	22.3	24.4	90.08	813.5	396.2	1,354.8	1,313.4	41.41	32.713		
7,700.0	7,435.0	7,747.3	7,435.0	22.3	24.2	90.03	813.4	305.3	1,354.7	1,312.5	42.21	32.093		
7,800.0	7,465.1	7,847.4	7,464.0	22.6	24.1	89.99	813.3	209.7	1,354.7	1,311.1	43.61	31.063		
7,900.0	7,481.7	7,947.3	7,479.4	23.1	24.2	89.94	813.1	111.0	1,354.6	1,309.0	45.59	29.712		
8,000.0	7,485.0	8,047.1	7,482.0	24.1	24.8	89.92	813.0	11.3	1,354.6	1,306.5	48.09	28.166		
8,100.0	7,485.0	8,147.1	7,482.0	25.4	25.9	89.92	812.9	-88.7	1,354.5	1,303.4	51.05	26.534		
8,200.0	7,485.0	8,247.1	7,482.0	27.0	27.4	89.92	812.7	-188.7	1,354.4	1,300.0	54.42	24.890		
8,300.0	7,485.0	8,347.1	7,482.0	28.9	29.3	89.92	812.6	-288.7	1,354.4	1,296.2	58.13	23.297		
8,400.0	7,485.0	8,447.1	7,482.0	30.9	31.3	89.92	812.4	-388.7	1,354.3	1,292.2	62.14	21.796		
8,500.0	7,485.0	8,547.1	7,482.0	33.0	33.4	89.92	812.3	-488.7	1,354.3	1,287.9	66.37	20.404		
8,600.0	7,485.0	8,647.1	7,482.0	35.2	35.6	89.92	812.2	-588.7	1,354.2	1,283.4	70.80	19.128		
8,700.0	7,485.0	8,747.1	7,482.0	37.6	37.9	89.92	812.0	-688.7	1,354.1	1,278.8	75.38	17.964		
8,800.0	7,485.0	8,847.1	7,482.0	39.9	40.3	89.92	811.9	-788.7	1,354.1	1,274.0	80.09	16.906		
8,900.0	7,485.0	8,947.1	7,482.0	42.4	42.7	89.92	811.8	-888.7	1,354.0	1,269.1	84.92	15.945		
9,000.0	7,485.0	9,047.1	7,482.0	44.8	45.2	89.92	811.6	-988.7	1,354.0	1,264.1	89.83	15.072		
9,100.0	7,485.0	9,147.1	7,482.0	47.3	47.7	89.92	811.5	-1,088.7	1,353.9	1,259.1	94.82	14.278		
9,200.0	7,485.0	9,247.1	7,482.0	49.9	50.2	89.92	811.4	-1,188.7	1,353.8	1,254.0	99.88	13.555		
9,300.0	7,485.0	9,347.1	7,482.0	52.5	52.8	89.92	811.2	-1,288.7	1,353.8	1,248.8	104.99	12.894		
9,400.0	7,485.0	9,447.1	7,482.0	55.0	55.3	89.92	811.1	-1,388.7	1,353.7	1,243.6	110.15	12.289		
9,500.0	7,485.0	9,547.1	7,482.0	57.7	57.9	89.92	811.0	-1,488.7	1,353.7	1,238.3	115.36	11.735		
9,600.0	7,485.0	9,647.1	7,482.0	60.3	60.6	89.92	810.8	-1,588.7	1,353.6	1,233.0	120.60	11.224		
9,700.0	7,485.0	9,747.1	7,482.0	62.9	63.2	89.92	810.7	-1,688.7	1,353.5	1,227.7	125.87	10.754		
9,800.0	7,485.0	9,847.1	7,482.0	65.6	65.8	89.92	810.6	-1,788.7	1,353.5	1,222.3	131.17	10.319		
9,900.0	7,485.0	9,947.1	7,482.0	68.2	68.5	89.92	810.4	-1,888.7	1,353.4	1,216.9	136.49	9.916		
10,000.0	7,485.0	10,047.1	7,482.0	70.9	71.2	89.92	810.3	-1,988.7	1,353.4	1,211.5	141.84	9.542		
10,100.0	7,485.0	10,147.1	7,482.0	73.6	73.8	89.92	810.1	-2,088.7	1,353.3	1,206.1	147.20	9.194		

Company:	Synergy Resources	Local Co-ordinate Reference:	Well SRC Eberle 14-32-31NHZM
Project:	SEC.32-T1N-R66W	TVD Reference:	WELL @ 5045.0ft (RKB - 12')
Reference Site:	SRC Eberle 14-32-31CHZM Pad Sec.32-T1N-R66W	MD Reference:	WELL @ 5045.0ft (RKB - 12')
Site Error:	0.0ft	North Reference:	True
Reference Well:	SRC Eberle 14-32-31NHZM	Survey Calculation Method:	Minimum Curvature
Well Error:	0.0ft	Output errors are at	2.00 sigma
Reference Wellbore	Wellbore #1	Database:	Landmark
Reference Design:	Plan #2 (1-2-14)	Offset TVD Reference:	Offset Datum

Offset Design		SRC Eberle 14-32-31CHZM Pad Sec.32-T1N-R66W - SRC Eberle 13-32NHZ - Wellbore #1 - Plan #1 (1										Offset Site Error:		0.0 ft	
Survey Program: 0-MWD												Offset Well Error:		0.0 ft	
Reference		Offset		Semi Major Axis		Distance								Warning	
Measured Depth Vertical Depth (ft)	Vertical Depth (ft)	Measured Depth Vertical Depth (ft)	Vertical Depth (ft)	Reference (ft)	Offset (ft)	Highside Toolface (°)	Offset Wellbore Centre +N/-S (ft)	+E/-W (ft)	Between Centres (ft)	Between Ellipses (ft)	Minimum Separation (ft)	Separation Factor			
10,200.0	7,485.0	10,247.1	7,482.0	76.3	76.5	89.92	810.0	-2,188.7	1,353.2	1,200.7	152.58	8.869			
10,300.0	7,485.0	10,347.1	7,482.0	79.0	79.2	89.92	809.9	-2,288.7	1,353.2	1,195.2	157.98	8.565			
10,400.0	7,485.0	10,447.1	7,482.0	81.7	81.9	89.92	809.7	-2,388.7	1,353.1	1,189.7	163.39	8.281			
10,500.0	7,485.0	10,547.1	7,482.0	84.4	84.6	89.92	809.6	-2,488.7	1,353.1	1,184.2	168.82	8.015			
10,600.0	7,485.0	10,647.1	7,482.0	87.2	87.3	89.92	809.5	-2,588.7	1,353.0	1,178.8	174.26	7.764			
10,700.0	7,485.0	10,747.1	7,482.0	89.9	90.1	89.92	809.3	-2,688.7	1,352.9	1,173.2	179.70	7.529			
10,800.0	7,485.0	10,847.1	7,482.0	92.6	92.8	89.92	809.2	-2,788.7	1,352.9	1,167.7	185.16	7.307			
10,900.0	7,485.0	10,947.1	7,482.0	95.3	95.5	89.92	809.1	-2,888.7	1,352.8	1,162.2	190.63	7.097			
11,000.0	7,485.0	11,047.1	7,482.0	98.1	98.2	89.92	808.9	-2,988.7	1,352.8	1,156.7	196.10	6.898			
11,100.0	7,485.0	11,147.1	7,482.0	100.8	101.0	89.92	808.8	-3,088.7	1,352.7	1,151.1	201.58	6.711			
11,200.0	7,485.0	11,247.1	7,482.0	103.6	103.7	89.92	808.7	-3,188.7	1,352.7	1,145.6	207.07	6.532			
11,300.0	7,485.0	11,347.1	7,482.0	106.3	106.5	89.92	808.5	-3,288.7	1,352.6	1,140.0	212.56	6.363			
11,400.0	7,485.0	11,447.1	7,482.0	109.1	109.2	89.92	808.4	-3,388.7	1,352.5	1,134.5	218.06	6.202			
11,500.0	7,485.0	11,547.1	7,482.0	111.8	112.0	89.92	808.3	-3,488.7	1,352.5	1,128.9	223.57	6.049			
11,600.0	7,485.0	11,647.1	7,482.0	114.6	114.7	89.92	808.1	-3,588.7	1,352.4	1,123.3	229.08	5.904			
11,700.0	7,485.0	11,747.1	7,482.0	117.3	117.5	89.92	808.0	-3,688.7	1,352.4	1,117.8	234.59	5.765			
11,800.0	7,485.0	11,847.1	7,482.0	120.1	120.2	89.92	807.8	-3,788.7	1,352.3	1,112.2	240.11	5.632			
11,900.0	7,485.0	11,947.1	7,482.0	122.9	123.0	89.92	807.7	-3,888.7	1,352.2	1,106.6	245.64	5.505			
11,963.2	7,485.0	12,010.3	7,482.0	124.6	124.7	89.92	807.6	-3,951.9	1,352.2	1,103.1	249.13	5.428			
12,000.0	7,485.0	12,022.3	7,482.0	125.6	125.1	89.92	807.6	-3,963.9	1,352.4	1,101.9	250.48	5.399			
12,100.0	7,485.0	12,022.3	7,482.0	128.4	125.1	89.92	807.6	-3,963.9	1,357.9	1,104.6	253.24	5.362			
12,200.0	7,485.0	12,022.3	7,482.0	131.2	125.1	89.92	807.6	-3,963.9	1,370.6	1,114.6	256.01	5.354 SF			
12,300.0	7,485.0	12,022.3	7,482.0	133.9	125.1	89.92	807.6	-3,963.9	1,390.5	1,131.7	258.78	5.373			
12,400.0	7,485.0	12,022.3	7,482.0	136.7	125.1	89.92	807.6	-3,963.9	1,417.1	1,155.5	261.55	5.418			
12,500.0	7,485.0	12,022.3	7,482.0	139.5	125.1	89.92	807.6	-3,963.9	1,450.2	1,185.8	264.32	5.486			
12,600.0	7,485.0	12,022.3	7,482.0	142.2	125.1	89.92	807.6	-3,963.9	1,489.2	1,222.1	267.10	5.576			
12,700.0	7,485.0	12,022.3	7,482.0	145.0	125.1	89.92	807.6	-3,963.9	1,533.8	1,263.9	269.87	5.683			
12,800.0	7,485.0	12,022.3	7,482.0	147.8	125.1	89.92	807.6	-3,963.9	1,583.5	1,310.8	272.65	5.808			
12,900.0	7,485.0	12,022.3	7,482.0	150.6	125.1	89.92	807.6	-3,963.9	1,637.7	1,362.3	275.43	5.946			
13,000.0	7,485.0	12,022.3	7,482.0	153.3	125.1	89.92	807.6	-3,963.9	1,696.2	1,418.0	278.20	6.097			
13,100.0	7,485.0	12,022.3	7,482.0	156.1	125.1	89.92	807.6	-3,963.9	1,758.3	1,477.4	280.98	6.258			
13,200.0	7,485.0	12,022.3	7,482.0	158.9	125.1	89.92	807.6	-3,963.9	1,823.9	1,540.1	283.76	6.428			
13,300.0	7,485.0	12,022.3	7,482.0	161.7	125.1	89.92	807.6	-3,963.9	1,892.4	1,605.9	286.54	6.604			
13,400.0	7,485.0	12,022.3	7,482.0	164.5	125.1	89.92	807.6	-3,963.9	1,963.7	1,674.4	289.32	6.787			
13,500.0	7,485.0	12,022.3	7,482.0	167.2	125.1	89.92	807.6	-3,963.9	2,037.4	1,745.3	292.11	6.975			
13,600.0	7,485.0	12,022.3	7,482.0	170.0	125.1	89.92	807.6	-3,963.9	2,113.2	1,818.3	294.89	7.166			
13,700.0	7,485.0	12,022.3	7,482.0	172.8	125.1	89.92	807.6	-3,963.9	2,191.0	1,893.3	297.67	7.360			
13,800.0	7,485.0	12,022.3	7,482.0	175.6	125.1	89.92	807.6	-3,963.9	2,270.5	1,970.1	300.46	7.557			
13,900.0	7,485.0	12,022.3	7,482.0	178.4	125.1	89.92	807.6	-3,963.9	2,351.6	2,048.4	303.24	7.755			
14,000.0	7,485.0	12,022.3	7,482.0	181.2	125.1	89.92	807.6	-3,963.9	2,434.1	2,128.1	306.03	7.954			
14,100.0	7,485.0	12,022.3	7,482.0	183.9	125.1	89.92	807.6	-3,963.9	2,517.9	2,209.1	308.81	8.153			
14,200.0	7,485.0	12,022.3	7,482.0	186.7	125.1	89.92	807.6	-3,963.9	2,602.8	2,291.2	311.60	8.353			
14,300.0	7,485.0	12,022.3	7,482.0	189.5	125.1	89.92	807.6	-3,963.9	2,688.7	2,374.4	314.39	8.552			
14,400.0	7,485.0	12,022.3	7,482.0	192.3	125.1	89.92	807.6	-3,963.9	2,775.6	2,458.5	317.17	8.751			
14,500.0	7,485.0	12,022.3	7,482.0	195.1	125.1	89.92	807.6	-3,963.9	2,863.4	2,543.4	319.96	8.949			
14,600.0	7,485.0	12,022.3	7,482.0	197.9	125.1	89.92	807.6	-3,963.9	2,951.9	2,629.2	322.75	9.146			
14,645.7	7,485.0	12,022.3	7,482.0	199.2	125.1	89.92	807.6	-3,963.9	2,992.6	2,668.6	324.02	9.236			

Offset Design													Offset Site Error:		0.0 ft
Survey Program: 0-MWD													Offset Well Error:		0.0 ft
Reference		Offset		Semi Major Axis			Distance						Warning		
Measured Depth (ft)	Vertical Depth (ft)	Measured Depth (ft)	Vertical Depth (ft)	Reference (ft)	Offset (ft)	Highside Toolface (°)	Offset Wellbore Centre +N/-S (ft)	+E/-W (ft)	Between Centres (ft)	Between Ellipses (ft)	Minimum Separation (ft)	Separation Factor			
0.0	0.0	1.0	1.0	0.0	0.0	90.78	-0.3	24.7	24.7	24.7	0.00	N/A			
100.0	100.0	101.0	101.0	0.1	0.1	90.78	-0.3	24.7	24.7	24.4	0.23	108.607			
166.3	166.3	167.3	167.3	0.3	0.3	90.78	-0.3	24.7	24.7	24.1	0.53	46.945 CC			
200.0	200.0	201.0	201.0	0.3	0.3	90.78	-0.3	24.7	24.7	24.0	0.68	36.454			
300.0	300.0	300.7	300.7	0.6	0.5	92.30	-1.0	25.2	25.2	24.1	1.10	22.849			
400.0	400.0	400.4	400.3	0.8	0.7	96.42	-3.0	26.9	27.1	25.5	1.53	17.672			
500.0	500.0	500.0	499.9	1.0	1.0	-24.00	-6.4	29.7	29.6	27.6	1.95	15.168			
600.0	600.0	599.4	599.1	1.2	1.2	-19.09	-11.0	33.6	32.1	29.7	2.37	13.550			
700.0	699.9	698.9	698.2	1.4	1.5	-14.25	-17.0	38.6	34.6	31.8	2.80	12.361			
800.0	799.7	798.2	797.1	1.6	1.7	-9.44	-24.3	44.6	37.2	33.9	3.24	11.483			
900.0	899.4	897.5	895.8	1.9	2.0	-4.67	-32.9	51.8	39.9	36.2	3.68	10.833			
1,000.0	998.9	996.7	994.2	2.1	2.3	0.04	-42.8	60.1	42.8	38.6	4.13	10.357			
1,100.0	1,098.3	1,095.9	1,092.2	2.4	2.6	4.68	-54.0	69.4	45.9	41.3	4.58	10.011			
1,200.0	1,197.4	1,194.9	1,189.9	2.7	3.0	9.21	-66.5	79.8	49.2	44.2	5.04	9.763			
1,300.0	1,296.3	1,293.9	1,287.3	3.0	3.4	13.61	-80.3	91.3	52.9	47.4	5.52	9.584			
1,400.0	1,394.9	1,393.4	1,384.9	3.4	3.8	17.87	-95.1	103.7	56.6	50.6	6.02	9.397			
1,500.0	1,493.5	1,493.3	1,482.8	3.7	4.2	21.73	-110.1	116.2	60.3	53.8	6.56	9.193			
1,600.0	1,592.1	1,593.1	1,580.8	4.1	4.6	25.14	-125.1	128.7	64.3	57.1	7.13	9.019			
1,700.0	1,690.7	1,693.0	1,678.7	4.5	5.1	28.14	-140.1	141.2	68.4	60.7	7.72	8.867			
1,800.0	1,789.3	1,792.9	1,776.6	4.8	5.5	30.79	-155.1	153.7	72.7	64.4	8.33	8.732			
1,900.0	1,887.8	1,892.7	1,874.6	5.2	5.9	33.14	-170.1	166.2	77.2	68.2	8.96	8.612			
2,000.0	1,986.4	1,992.6	1,972.5	5.6	6.3	35.23	-185.0	178.7	81.7	72.1	9.61	8.503			
2,100.0	2,085.0	2,092.4	2,070.4	6.0	6.8	37.10	-200.0	191.2	86.4	76.1	10.28	8.406			
2,200.0	2,183.6	2,192.3	2,168.3	6.4	7.2	38.77	-215.0	203.7	91.2	80.2	10.96	8.319			
2,300.0	2,282.1	2,292.1	2,266.3	6.7	7.6	40.28	-230.0	216.2	96.0	84.3	11.65	8.240			
2,400.0	2,380.7	2,392.0	2,364.2	7.1	8.1	41.64	-245.0	228.7	100.9	88.5	12.35	8.169			
2,500.0	2,479.3	2,491.8	2,462.1	7.5	8.5	42.88	-259.9	241.2	105.8	92.7	13.05	8.105			
2,600.0	2,577.9	2,591.7	2,560.1	7.9	9.0	44.01	-274.9	253.7	110.8	97.0	13.77	8.047			
2,700.0	2,676.5	2,691.5	2,658.0	8.3	9.4	45.04	-289.9	266.2	115.8	101.3	14.48	7.994			
2,800.0	2,775.0	2,791.4	2,755.9	8.7	9.8	45.98	-304.9	278.7	120.8	105.6	15.21	7.946			
2,900.0	2,873.6	2,891.2	2,853.8	9.1	10.3	46.85	-319.9	291.2	125.9	110.0	15.93	7.903			
3,000.0	2,972.2	2,991.1	2,951.8	9.5	10.7	47.65	-334.9	303.7	131.0	114.3	16.66	7.863			
3,100.0	3,070.8	3,091.0	3,049.7	9.9	11.2	48.39	-349.8	316.2	136.1	118.7	17.39	7.827			
3,200.0	3,169.4	3,190.8	3,147.6	10.3	11.6	49.07	-364.8	328.7	141.3	123.2	18.13	7.794			
3,300.0	3,267.9	3,290.7	3,245.6	10.7	12.0	49.71	-379.8	341.2	146.5	127.6	18.87	7.763			
3,400.0	3,366.5	3,390.5	3,343.5	11.0	12.5	50.31	-394.8	353.7	151.6	132.0	19.61	7.735			
3,500.0	3,465.1	3,490.4	3,441.4	11.4	12.9	50.86	-409.8	366.1	156.8	136.5	20.35	7.709			
3,600.0	3,563.7	3,590.2	3,539.4	11.8	13.4	51.38	-424.7	378.6	162.1	141.0	21.09	7.685			
3,700.0	3,662.2	3,690.1	3,637.3	12.2	13.8	51.87	-439.7	391.1	167.3	145.4	21.83	7.662			
3,800.0	3,760.8	3,789.9	3,735.2	12.6	14.2	52.32	-454.7	403.6	172.5	149.9	22.58	7.641			
3,900.0	3,859.4	3,889.8	3,833.1	13.0	14.7	52.75	-469.7	416.1	177.8	154.4	23.32	7.622			
4,000.0	3,958.0	3,989.6	3,931.1	13.4	15.1	53.16	-484.7	428.6	183.0	159.0	24.07	7.604			
4,100.0	4,056.6	4,089.5	4,029.0	13.8	15.6	53.54	-499.6	441.1	188.3	163.5	24.82	7.587			
4,200.0	4,155.1	4,189.3	4,126.9	14.2	16.0	53.91	-514.6	453.6	193.6	168.0	25.57	7.572			
4,300.0	4,253.7	4,289.2	4,224.9	14.6	16.4	54.25	-529.6	466.1	198.8	172.5	26.31	7.557			
4,400.0	4,352.3	4,389.0	4,322.8	15.0	16.9	54.57	-544.6	478.6	204.1	177.1	27.06	7.543			
4,500.0	4,450.9	4,488.9	4,420.7	15.4	17.3	54.88	-559.6	491.1	209.4	181.6	27.81	7.530			
4,600.0	4,549.4	4,588.8	4,518.6	15.8	17.8	55.18	-574.6	503.6	214.7	186.2	28.56	7.518			
4,700.0	4,648.0	4,688.6	4,616.6	16.2	18.2	55.45	-589.5	516.1	220.0	190.7	29.31	7.506			
4,800.0	4,746.6	4,788.5	4,714.5	16.6	18.6	55.72	-604.5	528.6	225.3	195.3	30.07	7.495			
4,900.0	4,845.2	4,888.3	4,812.4	17.0	19.1	55.98	-619.5	541.1	230.7	199.8	30.82	7.485			

SRC Eberle 14-32-31CHZM Pad Sec.32-T1N-R66W - SRC Eberle 14-32-31CHZM - Wellbore #1 - Plan												Offset Site Error: 0.0 ft	
Survey Program: 0-MWD												Offset Well Error: 0.0 ft	
Reference		Offset		Semi Major Axis			Distance					Warning	
Measured Depth	Vertical Depth	Measured Depth	Vertical Depth	Reference	Offset	Highside Toolface	Offset Wellbore Centre		Between Centres	Between Ellipses	Minimum Separation		Separation Factor
(ft)	(ft)	(ft)	(ft)	(ft)	(ft)	(°)	+N/-S (ft)	+E/-W (ft)	(ft)	(ft)	(ft)		
5,000.0	4,943.8	4,988.2	4,910.4	17.4	19.5	56.22	-634.5	553.6	236.0	204.4	31.57	7.475	
5,100.0	5,042.3	5,088.0	5,008.3	17.7	20.0	56.45	-649.5	566.1	241.3	209.0	32.32	7.466	
5,200.0	5,140.9	5,187.9	5,106.2	18.1	20.4	56.67	-664.4	578.6	246.6	213.6	33.07	7.457	
5,300.0	5,239.5	5,287.7	5,204.1	18.5	20.8	56.88	-679.4	591.1	252.0	218.1	33.83	7.449	
5,400.0	5,338.1	5,387.6	5,302.1	18.9	21.3	57.09	-694.4	603.6	257.3	222.7	34.58	7.441	
5,500.0	5,436.6	5,487.4	5,400.0	19.3	21.7	57.28	-709.4	616.1	262.6	227.3	35.33	7.433	
5,600.0	5,535.2	5,587.3	5,497.9	19.7	22.2	57.47	-724.4	628.6	268.0	231.9	36.09	7.426	
5,700.0	5,633.8	5,687.1	5,595.9	20.1	22.6	57.65	-739.4	641.1	273.3	236.5	36.84	7.419	
5,800.0	5,732.4	5,787.0	5,693.8	20.5	23.1	57.82	-754.3	653.6	278.7	241.1	37.59	7.412	
5,900.0	5,831.0	5,886.9	5,791.7	20.9	23.5	57.99	-769.3	666.1	284.0	245.7	38.35	7.406	
6,000.0	5,929.5	5,986.7	5,889.7	21.3	23.9	58.15	-784.3	678.5	289.4	250.3	39.10	7.400	
6,100.0	6,028.1	6,086.6	5,987.6	21.7	24.4	58.31	-799.3	691.0	294.7	254.9	39.86	7.394	
6,200.0	6,126.7	6,186.4	6,085.5	22.1	24.8	58.46	-814.3	703.5	300.1	259.5	40.61	7.390	
6,300.0	6,225.6	6,286.2	6,183.4	22.4	25.3	58.39	-829.2	716.0	306.5	265.3	41.18	7.442	
6,400.0	6,324.9	6,389.4	6,284.6	22.6	25.7	57.83	-844.4	728.7	314.5	272.9	41.58	7.565	
6,500.0	6,424.6	6,497.9	6,391.7	22.8	26.0	57.10	-857.9	739.9	322.2	280.4	41.81	7.705	
6,600.0	6,524.5	6,606.7	6,499.7	22.9	26.2	56.33	-868.2	748.5	329.0	287.0	41.96	7.841	
6,700.0	6,624.5	6,716.0	6,608.5	23.1	26.5	-179.07	-875.4	754.6	334.9	293.4	41.52	8.066	
6,800.0	6,724.5	6,825.7	6,718.1	23.2	26.6	-179.65	-879.4	757.9	338.5	296.5	41.99	8.063	
6,900.0	6,824.5	6,933.0	6,825.5	23.3	26.7	-90.09	-880.3	758.7	339.3	297.0	42.30	8.022	
7,000.0	6,923.3	7,031.9	6,924.3	23.3	26.9	-92.51	-880.3	758.7	339.7	297.9	41.73	8.140	
7,100.0	7,019.1	7,133.1	7,025.3	23.2	26.9	-96.07	-880.3	751.7	341.3	300.7	40.67	8.393	
7,200.0	7,110.1	7,237.8	7,127.5	23.0	26.9	-99.54	-880.4	729.7	344.3	304.8	39.50	8.716	
7,300.0	7,194.4	7,346.1	7,228.7	22.8	26.7	-102.81	-880.4	691.5	348.3	310.0	38.32	9.090	
7,400.0	7,270.4	7,458.1	7,326.1	22.6	26.5	-105.82	-880.4	636.4	353.1	315.9	37.27	9.476	
7,500.0	7,336.7	7,573.9	7,416.4	22.4	26.3	-108.49	-880.5	564.2	358.3	321.8	36.50	9.815	
7,600.0	7,391.9	7,693.2	7,496.2	22.3	26.0	-110.74	-880.5	475.6	363.2	327.0	36.23	10.026	
7,700.0	7,435.0	7,815.7	7,561.6	22.3	25.7	-112.53	-880.6	372.2	367.6	330.9	36.68	10.022	
7,800.0	7,465.1	7,940.9	7,609.2	22.6	25.5	-113.80	-880.7	256.6	371.0	333.0	37.99	9.765	
7,900.0	7,481.7	8,067.8	7,636.3	23.1	25.4	-114.53	-880.8	132.7	373.0	332.8	40.18	9.282	
8,000.0	7,485.0	8,187.5	7,642.0	24.1	25.5	-114.69	-880.8	13.3	373.4	330.5	42.89	8.707	
8,100.0	7,485.0	8,287.5	7,642.0	25.4	26.2	-114.69	-880.9	-86.7	373.4	327.8	45.59	8.190	
8,200.0	7,485.0	8,387.5	7,642.0	27.0	27.5	-114.69	-881.0	-186.7	373.4	324.7	48.68	7.671	
8,300.0	7,485.0	8,487.5	7,642.0	28.9	29.3	-114.69	-881.0	-286.7	373.4	321.3	52.09	7.168	
8,400.0	7,485.0	8,587.5	7,642.0	30.9	31.3	-114.69	-881.1	-386.7	373.4	317.6	55.77	6.695	
8,500.0	7,485.0	8,687.5	7,642.0	33.0	33.4	-114.70	-881.2	-486.7	373.4	313.7	59.66	6.258	
8,600.0	7,485.0	8,787.5	7,642.0	35.2	35.7	-114.70	-881.3	-586.7	373.4	309.6	63.73	5.858	
8,700.0	7,485.0	8,887.5	7,642.0	37.6	38.0	-114.70	-881.3	-686.7	373.4	305.4	67.95	5.495	
8,800.0	7,485.0	8,987.5	7,642.0	39.9	40.3	-114.70	-881.4	-786.7	373.4	301.1	72.28	5.165	
8,900.0	7,485.0	9,087.5	7,642.0	42.4	42.8	-114.70	-881.5	-886.7	373.4	296.6	76.72	4.867	
9,000.0	7,485.0	9,187.5	7,642.0	44.8	45.2	-114.70	-881.5	-986.7	373.4	292.1	81.23	4.596	
9,100.0	7,485.0	9,287.5	7,642.0	47.3	47.8	-114.70	-881.6	-1,086.7	373.3	287.5	85.82	4.350	
9,200.0	7,485.0	9,387.5	7,642.0	49.9	50.3	-114.70	-881.7	-1,186.7	373.3	282.9	90.46	4.127	
9,300.0	7,485.0	9,487.5	7,642.0	52.5	52.9	-114.70	-881.7	-1,286.7	373.3	278.2	95.16	3.923	
9,400.0	7,485.0	9,587.5	7,642.0	55.0	55.4	-114.70	-881.8	-1,386.7	373.3	273.4	99.90	3.737	
9,500.0	7,485.0	9,687.5	7,642.0	57.7	58.0	-114.70	-881.9	-1,486.7	373.3	268.6	104.67	3.567	
9,600.0	7,485.0	9,787.5	7,642.0	60.3	60.7	-114.70	-881.9	-1,586.7	373.3	263.8	109.48	3.410	
9,700.0	7,485.0	9,887.5	7,642.0	62.9	63.3	-114.70	-882.0	-1,686.7	373.3	259.0	114.32	3.265	
9,800.0	7,485.0	9,987.5	7,642.0	65.6	65.9	-114.70	-882.1	-1,786.7	373.3	254.1	119.18	3.132	
9,900.0	7,485.0	10,087.5	7,642.0	68.2	68.6	-114.70	-882.1	-1,886.7	373.3	249.2	124.07	3.009	
10,000.0	7,485.0	10,187.5	7,642.0	70.9	71.3	-114.70	-882.2	-1,986.7	373.3	244.3	128.97	2.894	

Company:	Synergy Resources	Local Co-ordinate Reference:	Well SRC Eberle 14-32-31NHZM
Project:	SEC.32-T1N-R66W	TVD Reference:	WELL @ 5045.0ft (RKB - 12')
Reference Site:	SRC Eberle 14-32-31CHZM Pad Sec.32-T1N-R66W	MD Reference:	WELL @ 5045.0ft (RKB - 12')
Site Error:	0.0ft	North Reference:	True
Reference Well:	SRC Eberle 14-32-31NHZM	Survey Calculation Method:	Minimum Curvature
Well Error:	0.0ft	Output errors are at	2.00 sigma
Reference Wellbore	Wellbore #1	Database:	Landmark
Reference Design:	Plan #2 (1-2-14)	Offset TVD Reference:	Offset Datum

Offset Design SRC Eberle 14-32-31CHZM Pad Sec.32-T1N-R66W - SRC Eberle 14-32-31CHZM - Wellbore #1 - Plan													Offset Site Error:	0.0 ft
Survey Program: 0-MWD													Offset Well Error:	0.0 ft
Measured Depth (ft)	Vertical Depth (ft)	Measured Depth (ft)	Vertical Depth (ft)	Reference	Offset	Semi Major Axis Reference (ft)	Highside Toolface (°)	Offset Wellbore Centre +N/-S (ft)	+E/-W (ft)	Between Centres (ft)	Between Ellipses (ft)	Minimum Separation (ft)	Separation Factor	Warning
10,100.0	7,485.0	10,287.5	7,642.0	73.6	74.0	-114.70	-114.70	-882.3	-2,086.7	373.3	239.4	133.89	2.788	
10,200.0	7,485.0	10,387.5	7,642.0	76.3	76.6	-114.70	-114.70	-882.3	-2,186.7	373.3	234.4	138.83	2.689	
10,300.0	7,485.0	10,487.5	7,642.0	79.0	79.3	-114.70	-114.70	-882.4	-2,286.7	373.3	229.5	143.78	2.596	
10,400.0	7,485.0	10,587.5	7,642.0	81.7	82.0	-114.70	-114.70	-882.5	-2,386.7	373.3	224.5	148.74	2.509	
10,500.0	7,485.0	10,687.5	7,642.0	84.4	84.8	-114.71	-114.71	-882.5	-2,486.7	373.3	219.5	153.72	2.428	
10,600.0	7,485.0	10,787.5	7,642.0	87.2	87.5	-114.71	-114.71	-882.6	-2,586.7	373.2	214.5	158.70	2.352	
10,700.0	7,485.0	10,887.5	7,642.0	89.9	90.2	-114.71	-114.71	-882.7	-2,686.7	373.2	209.5	163.69	2.280	
10,800.0	7,485.0	10,987.5	7,642.0	92.6	92.9	-114.71	-114.71	-882.8	-2,786.7	373.2	204.5	168.70	2.212	
10,900.0	7,485.0	11,087.5	7,642.0	95.3	95.6	-114.71	-114.71	-882.8	-2,886.7	373.2	199.5	173.71	2.149	
11,000.0	7,485.0	11,187.5	7,642.0	98.1	98.4	-114.71	-114.71	-882.9	-2,986.7	373.2	194.5	178.72	2.088	
11,100.0	7,485.0	11,287.5	7,642.0	100.8	101.1	-114.71	-114.71	-883.0	-3,086.7	373.2	189.5	183.75	2.031	
11,200.0	7,485.0	11,387.5	7,642.0	103.6	103.9	-114.71	-114.71	-883.0	-3,186.7	373.2	184.4	188.78	1.977	
11,300.0	7,485.0	11,487.5	7,642.0	106.3	106.6	-114.71	-114.71	-883.1	-3,286.7	373.2	179.4	193.81	1.926	
11,400.0	7,485.0	11,587.5	7,642.0	109.1	109.4	-114.71	-114.71	-883.2	-3,386.7	373.2	174.3	198.85	1.877	
11,500.0	7,485.0	11,687.5	7,642.0	111.8	112.1	-114.71	-114.71	-883.2	-3,486.7	373.2	169.3	203.90	1.830	
11,600.0	7,485.0	11,787.5	7,642.0	114.6	114.9	-114.71	-114.71	-883.3	-3,586.7	373.2	164.2	208.95	1.786	
11,700.0	7,485.0	11,887.5	7,642.0	117.3	117.6	-114.71	-114.71	-883.4	-3,686.7	373.2	159.2	214.00	1.744	
11,800.0	7,485.0	11,987.5	7,642.0	120.1	120.4	-114.71	-114.71	-883.4	-3,786.7	373.2	154.1	219.06	1.704	
11,900.0	7,485.0	12,087.5	7,642.0	122.9	123.1	-114.71	-114.71	-883.5	-3,886.7	373.2	149.0	224.12	1.665	
12,000.0	7,485.0	12,187.5	7,642.0	125.6	125.9	-114.71	-114.71	-883.6	-3,986.7	373.2	144.0	229.18	1.628	
12,100.0	7,485.0	12,287.5	7,642.0	128.4	128.7	-114.71	-114.71	-883.6	-4,086.7	373.1	138.9	234.25	1.593	
12,200.0	7,485.0	12,387.5	7,642.0	131.2	131.4	-114.71	-114.71	-883.7	-4,186.7	373.1	133.8	239.32	1.559	
12,300.0	7,485.0	12,487.5	7,642.0	133.9	134.2	-114.71	-114.71	-883.8	-4,286.7	373.1	128.7	244.39	1.527	
12,400.0	7,485.0	12,587.5	7,642.0	136.7	136.9	-114.71	-114.71	-883.8	-4,386.7	373.1	123.7	249.47	1.496 Level 3	
12,500.0	7,485.0	12,687.5	7,642.0	139.5	139.7	-114.71	-114.71	-883.9	-4,486.7	373.1	118.6	254.54	1.466 Level 3	
12,600.0	7,485.0	12,787.5	7,642.0	142.2	142.5	-114.72	-114.72	-884.0	-4,586.7	373.1	113.5	259.62	1.437 Level 3	
12,700.0	7,485.0	12,887.5	7,642.0	145.0	145.3	-114.72	-114.72	-884.0	-4,686.7	373.1	108.4	264.70	1.410 Level 3	
12,800.0	7,485.0	12,987.5	7,642.0	147.8	148.0	-114.72	-114.72	-884.1	-4,786.7	373.1	103.3	269.79	1.383 Level 3	
12,900.0	7,485.0	13,087.5	7,642.0	150.6	150.8	-114.72	-114.72	-884.2	-4,886.7	373.1	98.2	274.87	1.357 Level 3	
13,000.0	7,485.0	13,187.5	7,642.0	153.3	153.6	-114.72	-114.72	-884.3	-4,986.7	373.1	93.1	279.96	1.333 Level 3	
13,100.0	7,485.0	13,287.5	7,642.0	156.1	156.4	-114.72	-114.72	-884.3	-5,086.7	373.1	88.0	285.05	1.309 Level 3	
13,200.0	7,485.0	13,387.5	7,642.0	158.9	159.1	-114.72	-114.72	-884.4	-5,186.7	373.1	82.9	290.14	1.286 Level 3	
13,300.0	7,485.0	13,487.5	7,642.0	161.7	161.9	-114.72	-114.72	-884.5	-5,286.7	373.1	77.8	295.23	1.264 Level 3	
13,400.0	7,485.0	13,587.5	7,642.0	164.5	164.7	-114.72	-114.72	-884.5	-5,386.7	373.1	72.7	300.33	1.242 Level 2	
13,500.0	7,485.0	13,687.5	7,642.0	167.2	167.5	-114.72	-114.72	-884.6	-5,486.7	373.0	67.6	305.42	1.221 Level 2	
13,600.0	7,485.0	13,787.5	7,642.0	170.0	170.2	-114.72	-114.72	-884.7	-5,586.7	373.0	62.5	310.52	1.201 Level 2	
13,700.0	7,485.0	13,887.5	7,642.0	172.8	173.0	-114.72	-114.72	-884.7	-5,686.7	373.0	57.4	315.61	1.182 Level 2	
13,800.0	7,485.0	13,987.5	7,642.0	175.6	175.8	-114.72	-114.72	-884.8	-5,786.7	373.0	52.3	320.71	1.163 Level 2	
13,900.0	7,485.0	14,087.5	7,642.0	178.4	178.6	-114.72	-114.72	-884.9	-5,886.7	373.0	47.2	325.81	1.145 Level 2	
14,000.0	7,485.0	14,187.5	7,642.0	181.2	181.4	-114.72	-114.72	-884.9	-5,986.7	373.0	42.1	330.91	1.127 Level 2	
14,100.0	7,485.0	14,287.5	7,642.0	183.9	184.2	-114.72	-114.72	-885.0	-6,086.7	373.0	37.0	336.01	1.110 Level 2	
14,200.0	7,485.0	14,387.5	7,642.0	186.7	186.9	-114.72	-114.72	-885.1	-6,186.7	373.0	31.9	341.12	1.093 Level 2	
14,300.0	7,485.0	14,487.5	7,642.0	189.5	189.7	-114.72	-114.72	-885.1	-6,286.7	373.0	26.8	346.22	1.077 Level 2	
14,400.0	7,485.0	14,587.5	7,642.0	192.3	192.5	-114.72	-114.72	-885.2	-6,386.7	373.0	21.7	351.32	1.062 Level 2	
14,500.0	7,485.0	14,687.5	7,642.0	195.1	195.3	-114.72	-114.72	-885.3	-6,486.7	373.0	16.6	356.43	1.046 Level 2	
14,600.0	7,485.0	14,787.5	7,642.0	197.9	198.1	-114.72	-114.72	-885.3	-6,586.7	373.0	11.4	361.53	1.032 Level 2	
14,645.7	7,485.0	14,833.2	7,642.0	199.2	199.4	-114.73	-114.73	-885.4	-6,632.4	373.0	9.1	363.87	1.025 Level 2, ES, SF	

SRC Eberle 14-32-31CHZM Pad Sec.32-T1N-R66W - SRC Eberle B-32CHZ - Wellbore #1 - Plan #1 (12													Offset Site Error:	0.0 ft
Survey Program: 0-MWD													Offset Well Error:	0.0 ft
Reference		Offset		Semi Major Axis			Distance							Warning
Measured Depth	Vertical Depth	Measured Depth	Vertical Depth	Reference	Offset	Highside Toolface	Offset Wellbore Centre		Between Centres	Between Ellipses	Minimum Separation	Separation Factor		
(ft)	(ft)	(ft)	(ft)	(ft)	(ft)	(°)	+N/-S (ft)	+E/-W (ft)	(ft)	(ft)	(ft)			
0.0	0.0	0.0	0.0	0.0	0.0	-90.01	0.0	-66.1	66.2					
100.0	100.0	97.0	97.0	0.1	0.1	-90.01	0.0	-66.1	66.1	65.9	0.22	298.620		
200.0	200.0	197.0	197.0	0.3	0.3	-90.01	0.0	-66.1	66.1	65.4	0.67	99.040		
300.0	300.0	297.0	297.0	0.6	0.6	-90.01	0.0	-66.1	66.1	65.0	1.12	59.185		
400.0	400.0	397.0	397.0	0.8	0.8	-90.01	0.0	-66.1	66.1	64.5	1.57	42.202 CC, ES		
500.0	500.0	497.0	497.0	1.0	1.0	144.97	0.0	-66.1	66.8	64.8	2.00	33.486		
600.0	600.0	597.0	597.0	1.2	1.2	146.21	0.0	-66.1	69.0	66.6	2.42	28.558		
700.0	699.9	696.9	696.9	1.4	1.5	148.10	0.0	-66.1	72.7	69.8	2.85	25.524		
800.0	799.7	796.7	796.7	1.6	1.7	150.45	0.0	-66.1	77.9	74.6	3.28	23.716		
900.0	899.4	896.4	896.4	1.9	1.9	153.03	0.0	-66.1	84.8	81.1	3.73	22.749		
1,000.0	998.9	995.9	995.9	2.1	2.1	155.66	0.0	-66.1	93.5	89.3	4.18	22.383		
1,100.0	1,098.3	1,095.3	1,095.3	2.4	2.3	158.19	0.0	-66.1	103.9	99.3	4.63	22.461		
1,200.0	1,197.4	1,194.4	1,194.4	2.7	2.6	160.54	0.0	-66.1	116.1	111.1	5.08	22.875		
1,300.0	1,296.3	1,295.5	1,295.5	3.0	2.8	162.74	-0.2	-65.3	129.4	123.9	5.51	23.463		
1,400.0	1,394.9	1,396.9	1,396.8	3.4	3.0	164.79	-0.8	-62.8	142.7	136.7	5.94	24.014		
1,500.0	1,493.5	1,498.6	1,498.5	3.7	3.2	166.66	-1.9	-58.6	154.7	148.3	6.38	24.260		
1,600.0	1,592.1	1,600.8	1,600.5	4.1	3.4	168.36	-3.4	-52.5	165.2	158.3	6.82	24.215		
1,700.0	1,690.7	1,703.3	1,702.6	4.5	3.6	169.97	-5.3	-44.7	174.0	166.7	7.27	23.935		
1,800.0	1,789.3	1,806.0	1,804.9	4.8	3.9	171.56	-7.6	-35.0	181.2	173.5	7.72	23.460		
1,900.0	1,887.8	1,908.9	1,907.1	5.2	4.1	173.17	-10.4	-23.6	186.8	178.6	8.18	22.825		
2,000.0	1,986.4	2,012.0	2,009.3	5.6	4.4	174.84	-13.7	-10.3	190.8	182.1	8.65	22.057		
2,100.0	2,085.0	2,115.1	2,111.2	6.0	4.7	176.61	-17.4	4.7	193.2	184.1	9.12	21.176		
2,200.0	2,183.6	2,217.5	2,212.2	6.4	5.0	178.50	-21.5	21.4	194.2	184.6	9.61	20.209		
2,300.0	2,282.1	2,317.3	2,310.5	6.7	5.3	-179.62	-25.6	38.1	194.8	184.7	10.10	19.290		
2,400.0	2,380.7	2,417.1	2,408.8	7.1	5.7	-177.76	-29.7	54.9	195.7	185.0	10.60	18.454		
2,500.0	2,479.3	2,516.9	2,507.0	7.5	6.0	-175.91	-33.8	71.7	196.7	185.6	11.12	17.690		
2,600.0	2,577.9	2,616.7	2,605.3	7.9	6.3	-174.08	-37.9	88.5	197.9	186.3	11.65	16.989		
2,700.0	2,676.5	2,716.5	2,703.6	8.3	6.7	-172.27	-42.0	105.3	199.4	187.2	12.20	16.344		
2,800.0	2,775.0	2,816.3	2,801.9	8.7	7.1	-170.50	-46.1	122.0	201.0	188.3	12.77	15.749		
2,900.0	2,873.6	2,916.1	2,900.2	9.1	7.4	-168.75	-50.3	138.8	202.9	189.5	13.35	15.200		
3,000.0	2,972.2	3,015.9	2,998.5	9.5	7.8	-167.04	-54.4	155.6	204.9	190.9	13.95	14.691		
3,100.0	3,070.8	3,115.7	3,096.8	9.9	8.2	-165.36	-58.5	172.4	207.1	192.5	14.56	14.220		
3,200.0	3,169.4	3,215.4	3,195.1	10.3	8.5	-163.72	-62.6	189.2	209.5	194.3	15.20	13.783		
3,300.0	3,267.9	3,315.2	3,293.3	10.7	8.9	-162.12	-66.7	205.9	212.0	196.2	15.85	13.377		
3,400.0	3,366.5	3,415.0	3,391.6	11.0	9.3	-160.56	-70.8	222.7	214.7	198.2	16.52	13.001		
3,500.0	3,465.1	3,514.8	3,489.9	11.4	9.7	-159.03	-74.9	239.5	217.6	200.4	17.20	12.651		
3,600.0	3,563.7	3,614.6	3,588.2	11.8	10.0	-157.55	-79.1	256.3	220.6	202.7	17.90	12.327		
3,700.0	3,662.2	3,714.4	3,686.5	12.2	10.4	-156.10	-83.2	273.0	223.7	205.1	18.61	12.025		
3,800.0	3,760.8	3,814.2	3,784.8	12.6	10.8	-154.70	-87.3	289.8	227.0	207.7	19.33	11.745		
3,900.0	3,859.4	3,914.0	3,883.1	13.0	11.2	-153.34	-91.4	306.6	230.5	210.4	20.07	11.485		
4,000.0	3,958.0	4,013.8	3,981.3	13.4	11.6	-152.02	-95.5	323.4	234.0	213.2	20.81	11.244		
4,100.0	4,056.6	4,113.6	4,079.6	13.8	12.0	-150.74	-99.6	340.2	237.7	216.1	21.57	11.020		
4,200.0	4,155.1	4,213.4	4,177.9	14.2	12.4	-149.50	-103.7	356.9	241.5	219.1	22.34	10.811		
4,300.0	4,253.7	4,313.2	4,276.2	14.6	12.8	-148.30	-107.8	373.7	245.4	222.3	23.11	10.617		
4,400.0	4,352.3	4,413.0	4,374.5	15.0	13.1	-147.13	-112.0	390.5	249.4	225.5	23.89	10.437		
4,500.0	4,450.9	4,512.8	4,472.8	15.4	13.5	-146.00	-116.1	407.3	253.5	228.8	24.68	10.270		
4,600.0	4,549.4	4,612.6	4,571.1	15.8	13.9	-144.91	-120.2	424.0	257.7	232.2	25.48	10.114		
4,700.0	4,648.0	4,712.3	4,669.3	16.2	14.3	-143.86	-124.3	440.8	262.0	235.7	26.28	9.969		
4,800.0	4,746.6	4,812.1	4,767.6	16.6	14.7	-142.83	-128.4	457.6	266.4	239.3	27.08	9.834		
4,900.0	4,845.2	4,911.9	4,865.9	17.0	15.1	-141.85	-132.5	474.4	270.8	242.9	27.89	9.709		
5,000.0	4,943.8	5,011.7	4,964.2	17.4	15.5	-140.89	-136.6	491.2	275.4	246.6	28.71	9.591		

COMPASS 2003.21 Build 46

Offset Design												Offset Site Error:		0.0 ft
Survey Program: 0-MWD												Offset Well Error:		0.0 ft
Reference		Offset		Semi Major Axis			Distance							
Measured Depth	Vertical Depth	Measured Depth	Vertical Depth	Reference	Offset	Highside Toolface	Offset Wellbore Centre		Between Centres	Between Ellipses	Minimum Separation	Separation Factor	Warning	
(ft)	(ft)	(ft)	(ft)	(ft)	(ft)	(°)	+N/-S (ft)	+E/-W (ft)	(ft)	(ft)	(ft)			
5,100.0	5,042.3	5,111.5	5,062.5	17.7	15.9	-139.97	-140.8	507.9	280.0	250.4	29.52	9.482		
5,200.0	5,140.9	5,211.3	5,160.8	18.1	16.3	-139.07	-144.9	524.7	284.6	254.3	30.34	9.380		
5,300.0	5,239.5	5,311.1	5,259.1	18.5	16.7	-138.20	-149.0	541.5	289.4	258.2	31.17	9.285		
5,400.0	5,338.1	5,410.9	5,357.4	18.9	17.1	-137.37	-153.1	558.3	294.2	262.2	31.99	9.197		
5,500.0	5,436.6	5,510.7	5,455.6	19.3	17.5	-136.56	-157.2	575.0	299.1	266.3	32.82	9.114		
5,600.0	5,535.2	5,610.5	5,553.9	19.7	17.9	-135.77	-161.3	591.8	304.0	270.4	33.64	9.036		
5,700.0	5,633.8	5,710.3	5,652.2	20.1	18.3	-135.01	-165.4	608.6	309.0	274.5	34.47	8.964		
5,800.0	5,732.4	5,810.1	5,750.5	20.5	18.6	-134.28	-169.5	625.4	314.0	278.7	35.30	8.896		
5,900.0	5,831.0	5,909.9	5,848.8	20.9	19.0	-133.57	-173.7	642.2	319.1	283.0	36.13	8.832		
6,000.0	5,929.5	6,009.7	5,947.1	21.3	19.4	-132.88	-177.8	658.9	324.2	287.3	36.96	8.773		
6,100.0	6,028.1	6,109.4	6,045.4	21.7	19.8	-132.21	-181.9	675.7	329.4	291.6	37.79	8.717		
6,200.0	6,126.7	6,209.2	6,143.6	22.1	20.2	-131.57	-186.0	692.5	334.6	296.0	38.62	8.664		
6,300.0	6,225.6	6,309.0	6,241.9	22.4	20.6	-130.74	-190.1	709.3	338.6	299.2	39.42	8.589		
6,400.0	6,324.9	6,407.4	6,338.9	22.6	21.0	-129.51	-194.1	725.6	340.4	300.2	40.23	8.463		
6,500.0	6,424.6	6,503.7	6,434.1	22.8	21.3	-128.27	-197.4	739.1	341.1	300.2	40.90	8.340		
6,600.0	6,524.5	6,600.0	6,529.8	22.9	21.5	-127.10	-200.0	749.5	340.7	299.2	41.47	8.214		
6,700.0	6,624.5	6,697.1	6,626.6	23.1	21.7	-0.54	-201.8	756.8	339.3	304.5	34.80	9.750		
6,800.0	6,724.5	6,794.2	6,723.6	23.2	21.8	0.15	-202.8	760.9	338.2	303.3	34.98	9.670		
6,881.3	6,805.8	6,873.4	6,802.8	23.3	21.9	90.80	-203.0	761.9	338.0	295.3	42.69	7.918		
6,900.0	6,824.5	6,892.0	6,821.5	23.3	22.0	90.73	-203.0	761.9	338.0	295.3	42.72	7.911		
7,000.0	6,923.3	6,990.9	6,920.3	23.3	22.1	93.14	-203.0	761.9	338.5	295.3	43.21	7.835		
7,100.0	7,019.1	7,092.5	7,021.6	23.2	22.2	96.79	-203.0	755.4	340.5	296.9	43.58	7.813		
7,200.0	7,110.1	7,197.8	7,124.6	23.0	22.1	100.32	-203.0	733.7	343.8	300.3	43.55	7.895		
7,300.0	7,194.4	7,306.8	7,226.6	22.8	21.9	103.66	-203.1	695.6	348.2	305.1	43.13	8.073		
7,400.0	7,270.4	7,419.7	7,324.9	22.6	21.7	106.70	-203.1	640.4	353.3	310.9	42.44	8.326		
7,500.0	7,336.7	7,536.5	7,416.2	22.4	21.5	109.38	-203.2	567.7	358.7	317.1	41.64	8.616		
7,600.0	7,391.9	7,657.0	7,496.6	22.3	21.4	111.62	-203.3	478.2	363.9	322.9	40.99	8.878		
7,700.0	7,435.0	7,780.7	7,562.5	22.3	21.5	113.38	-203.4	373.7	368.4	327.6	40.81	9.026		
7,800.0	7,465.1	7,907.0	7,610.2	22.6	22.1	114.60	-203.6	256.8	371.7	330.3	41.38	8.982		
7,900.0	7,481.7	8,035.1	7,636.8	23.1	23.1	115.24	-203.7	131.8	373.5	330.6	42.86	8.714		
8,000.0	7,485.0	8,154.3	7,642.0	24.1	24.5	115.35	-203.8	12.7	373.7	328.6	45.16	8.276		
8,100.0	7,485.0	8,254.3	7,642.0	25.4	25.9	115.35	-203.9	-87.3	373.7	325.9	47.85	7.810		
8,200.0	7,485.0	8,354.3	7,642.0	27.0	27.5	115.35	-204.0	-187.3	373.7	322.8	50.91	7.341		
8,300.0	7,485.0	8,454.3	7,642.0	28.9	29.4	115.35	-204.1	-287.3	373.7	319.4	54.27	6.885		
8,400.0	7,485.0	8,554.3	7,642.0	30.9	31.3	115.36	-204.2	-387.3	373.6	315.7	57.88	6.455		
8,500.0	7,485.0	8,654.3	7,642.0	33.0	33.4	115.36	-204.3	-487.3	373.6	311.9	61.71	6.054		
8,600.0	7,485.0	8,754.3	7,642.0	35.2	35.6	115.36	-204.4	-587.3	373.6	307.9	65.71	5.685		
8,700.0	7,485.0	8,854.3	7,642.0	37.6	37.9	115.36	-204.6	-687.3	373.5	303.7	69.86	5.347		
8,800.0	7,485.0	8,954.3	7,642.0	39.9	40.2	115.36	-204.7	-787.3	373.5	299.4	74.12	5.039		
8,900.0	7,485.0	9,054.3	7,642.0	42.4	42.6	115.37	-204.8	-887.3	373.5	295.0	78.48	4.759		
9,000.0	7,485.0	9,154.3	7,642.0	44.8	45.0	115.37	-204.9	-987.3	373.5	290.5	82.93	4.503		
9,100.0	7,485.0	9,254.3	7,642.0	47.3	47.5	115.37	-205.0	-1,087.3	373.4	286.0	87.45	4.270		
9,200.0	7,485.0	9,354.3	7,642.0	49.9	50.0	115.37	-205.1	-1,187.3	373.4	281.4	92.03	4.057		
9,300.0	7,485.0	9,454.3	7,642.0	52.5	52.6	115.37	-205.2	-1,287.3	373.4	276.7	96.66	3.863		
9,400.0	7,485.0	9,554.3	7,642.0	55.0	55.2	115.38	-205.3	-1,387.3	373.4	272.0	101.34	3.684		
9,500.0	7,485.0	9,654.3	7,642.0	57.7	57.7	115.38	-205.4	-1,487.3	373.3	267.3	106.05	3.520		
9,600.0	7,485.0	9,754.3	7,642.0	60.3	60.4	115.38	-205.5	-1,587.3	373.3	262.5	110.80	3.369		
9,700.0	7,485.0	9,854.3	7,642.0	62.9	63.0	115.38	-205.6	-1,687.3	373.3	257.7	115.58	3.229		
9,800.0	7,485.0	9,954.3	7,642.0	65.6	65.6	115.38	-205.7	-1,787.3	373.2	252.9	120.39	3.100		
9,900.0	7,485.0	10,054.3	7,642.0	68.2	68.3	115.39	-205.8	-1,887.3	373.2	248.0	125.22	2.981		
10,000.0	7,485.0	10,154.3	7,642.0	70.9	70.9	115.39	-205.9	-1,987.3	373.2	243.1	130.06	2.869		

Company:	Synergy Resources	Local Co-ordinate Reference:	Well SRC Eberle 14-32-31NHZM
Project:	SEC.32-T1N-R66W	TVD Reference:	WELL @ 5045.0ft (RKB - 12')
Reference Site:	SRC Eberle 14-32-31CHZM Pad Sec.32-T1N-R66W	MD Reference:	WELL @ 5045.0ft (RKB - 12')
Site Error:	0.0ft	North Reference:	True
Reference Well:	SRC Eberle 14-32-31NHZM	Survey Calculation Method:	Minimum Curvature
Well Error:	0.0ft	Output errors are at	2.00 sigma
Reference Wellbore	Wellbore #1	Database:	Landmark
Reference Design:	Plan #2 (1-2-14)	Offset TVD Reference:	Offset Datum

Offset Design		SRC Eberle 14-32-31CHZM Pad Sec.32-T1N-R66W - SRC Eberle B-32CHZ - Wellbore #1 - Plan #1 (12										Offset Site Error:		0.0 ft	
Survey Program: 0-MWD												Offset Well Error:		0.0 ft	
Reference		Offset		Semi Major Axis			Distance								
Measured Depth	Vertical Depth	Measured Depth	Vertical Depth	Reference	Offset	Highside Toolface	Offset Wellbore Centre		Between Centres	Between Ellipses	Minimum Separation	Separation Factor	Warning		
(ft)	(ft)	(ft)	(ft)	(ft)	(ft)	(°)	+N/-S (ft)	+E/-W (ft)	(ft)	(ft)	(ft)				
10,100.0	7,485.0	10,254.3	7,642.0	73.6	73.6	115.39	-206.0	-2,087.3	373.2	238.2	134.93	2.766			
10,200.0	7,485.0	10,354.3	7,642.0	76.3	76.3	115.39	-206.1	-2,187.3	373.1	233.3	139.82	2.669			
10,300.0	7,485.0	10,454.3	7,642.0	79.0	79.0	115.39	-206.2	-2,287.3	373.1	228.4	144.71	2.578			
10,400.0	7,485.0	10,554.3	7,642.0	81.7	81.7	115.40	-206.4	-2,387.3	373.1	223.5	149.63	2.493			
10,500.0	7,485.0	10,654.3	7,642.0	84.4	84.4	115.40	-206.5	-2,487.3	373.1	218.5	154.55	2.414			
10,600.0	7,485.0	10,754.3	7,642.0	87.2	87.1	115.40	-206.6	-2,587.3	373.0	213.5	159.48	2.339			
10,700.0	7,485.0	10,854.3	7,642.0	89.9	89.8	115.40	-206.7	-2,687.3	373.0	208.6	164.43	2.268			
10,800.0	7,485.0	10,954.3	7,642.0	92.6	92.6	115.40	-206.8	-2,787.3	373.0	203.6	169.38	2.202			
10,900.0	7,485.0	11,054.3	7,642.0	95.3	95.3	115.41	-206.9	-2,887.3	372.9	198.6	174.34	2.139			
11,000.0	7,485.0	11,154.3	7,642.0	98.1	98.0	115.41	-207.0	-2,987.3	372.9	193.6	179.31	2.080			
11,100.0	7,485.0	11,254.3	7,642.0	100.8	100.8	115.41	-207.1	-3,087.3	372.9	188.6	184.29	2.023			
11,200.0	7,485.0	11,354.3	7,642.0	103.6	103.5	115.41	-207.2	-3,187.3	372.9	183.6	189.27	1.970			
11,300.0	7,485.0	11,454.3	7,642.0	106.3	106.3	115.41	-207.3	-3,287.3	372.8	178.6	194.26	1.919			
11,400.0	7,485.0	11,554.3	7,642.0	109.1	109.0	115.42	-207.4	-3,387.3	372.8	173.6	199.25	1.871			
11,500.0	7,485.0	11,654.3	7,642.0	111.8	111.8	115.42	-207.5	-3,487.3	372.8	168.5	204.25	1.825			
11,600.0	7,485.0	11,754.3	7,642.0	114.6	114.5	115.42	-207.6	-3,587.3	372.8	163.5	209.25	1.781			
11,700.0	7,485.0	11,854.3	7,642.0	117.3	117.3	115.42	-207.7	-3,687.3	372.7	158.5	214.26	1.740			
11,800.0	7,485.0	11,954.3	7,642.0	120.1	120.0	115.42	-207.8	-3,787.3	372.7	153.4	219.27	1.700			
11,900.0	7,485.0	12,054.3	7,642.0	122.9	122.8	115.43	-207.9	-3,887.3	372.7	148.4	224.28	1.662			
11,962.4	7,485.0	12,116.8	7,642.0	124.6	124.5	115.43	-208.0	-3,949.7	372.7	145.2	227.41	1.639			
12,000.0	7,485.0	12,132.0	7,642.0	125.6	124.9	115.43	-208.0	-3,964.9	373.3	144.6	228.74	1.632 SF			
12,100.0	7,485.0	12,132.0	7,642.0	128.4	124.9	115.43	-208.0	-3,964.9	392.2	160.9	231.25	1.696			
12,200.0	7,485.0	12,132.0	7,642.0	131.2	124.9	115.43	-208.0	-3,964.9	433.9	200.1	233.77	1.856			
12,300.0	7,485.0	12,132.0	7,642.0	133.9	124.9	115.43	-208.0	-3,964.9	492.6	256.4	236.29	2.085			
12,400.0	7,485.0	12,132.0	7,642.0	136.7	124.9	115.43	-208.0	-3,964.9	563.1	324.3	238.80	2.358			
12,500.0	7,485.0	12,132.0	7,642.0	139.5	124.9	115.43	-208.0	-3,964.9	641.5	400.2	241.32	2.658			
12,600.0	7,485.0	12,132.0	7,642.0	142.2	124.9	115.43	-208.0	-3,964.9	725.3	481.4	243.84	2.974			
12,700.0	7,485.0	12,132.0	7,642.0	145.0	124.9	115.43	-208.0	-3,964.9	812.7	566.3	246.36	3.299			
12,800.0	7,485.0	12,132.0	7,642.0	147.8	124.9	115.43	-208.0	-3,964.9	902.7	653.8	248.89	3.627			
12,900.0	7,485.0	12,132.0	7,642.0	150.6	124.9	115.43	-208.0	-3,964.9	994.7	743.3	251.41	3.956			
13,000.0	7,485.0	12,132.0	7,642.0	153.3	124.9	115.43	-208.0	-3,964.9	1,088.0	834.1	253.93	4.285			
13,100.0	7,485.0	12,132.0	7,642.0	156.1	124.9	115.43	-208.0	-3,964.9	1,182.5	926.0	256.46	4.611			
13,200.0	7,485.0	12,132.0	7,642.0	158.9	124.9	115.43	-208.0	-3,964.9	1,277.8	1,018.8	258.98	4.934			
13,300.0	7,485.0	12,132.0	7,642.0	161.7	124.9	115.43	-208.0	-3,964.9	1,373.7	1,112.2	261.51	5.253			
13,400.0	7,485.0	12,132.0	7,642.0	164.5	124.9	115.43	-208.0	-3,964.9	1,470.2	1,206.2	264.04	5.568			
13,500.0	7,485.0	12,132.0	7,642.0	167.2	124.9	115.43	-208.0	-3,964.9	1,567.2	1,300.6	266.57	5.879			
13,600.0	7,485.0	12,132.0	7,642.0	170.0	124.9	115.43	-208.0	-3,964.9	1,664.5	1,395.4	269.10	6.185			
13,700.0	7,485.0	12,132.0	7,642.0	172.8	124.9	115.43	-208.0	-3,964.9	1,762.1	1,490.4	271.63	6.487			
13,800.0	7,485.0	12,132.0	7,642.0	175.6	124.9	115.43	-208.0	-3,964.9	1,859.9	1,585.8	274.16	6.784			
13,900.0	7,485.0	12,132.0	7,642.0	178.4	124.9	115.43	-208.0	-3,964.9	1,958.0	1,681.3	276.69	7.077			
14,000.0	7,485.0	12,132.0	7,642.0	181.2	124.9	115.43	-208.0	-3,964.9	2,056.3	1,777.0	279.22	7.364			
14,100.0	7,485.0	12,132.0	7,642.0	183.9	124.9	115.43	-208.0	-3,964.9	2,154.7	1,872.9	281.75	7.647			
14,200.0	7,485.0	12,132.0	7,642.0	186.7	124.9	115.43	-208.0	-3,964.9	2,253.2	1,969.0	284.28	7.926			
14,300.0	7,485.0	12,132.0	7,642.0	189.5	124.9	115.43	-208.0	-3,964.9	2,351.9	2,065.1	286.82	8.200			
14,400.0	7,485.0	12,132.0	7,642.0	192.3	124.9	115.43	-208.0	-3,964.9	2,450.7	2,161.4	289.35	8.470			
14,500.0	7,485.0	12,132.0	7,642.0	195.1	124.9	115.43	-208.0	-3,964.9	2,549.6	2,257.7	291.88	8.735			
14,600.0	7,485.0	12,132.0	7,642.0	197.9	124.9	115.43	-208.0	-3,964.9	2,648.6	2,354.1	294.42	8.996			
14,645.7	7,485.0	12,132.0	7,642.0	199.2	124.9	115.43	-208.0	-3,964.9	2,693.8	2,398.2	295.58	9.114			

Company:	Synergy Resources	Local Co-ordinate Reference:	Well SRC Eberle 14-32-31NHZM
Project:	SEC.32-T1N-R66W	TVD Reference:	WELL @ 5045.0ft (RKB - 12')
Reference Site:	SRC Eberle 14-32-31CHZM Pad Sec.32-T1N-R66W	MD Reference:	WELL @ 5045.0ft (RKB - 12')
Site Error:	0.0ft	North Reference:	True
Reference Well:	SRC Eberle 14-32-31NHZM	Survey Calculation Method:	Minimum Curvature
Well Error:	0.0ft	Output errors are at	2.00 sigma
Reference Wellbore	Wellbore #1	Database:	Landmark
Reference Design:	Plan #2 (1-2-14)	Offset TVD Reference:	Offset Datum

Offset Design													Offset Site Error:	0.0 ft
Survey Program: 0-MWD													Offset Well Error:	0.0 ft
Measured Depth (ft)	Vertical Depth (ft)	Measured Depth (ft)	Vertical Depth (ft)	Reference	Offset	Semi Major Axis	Highside Toolface (°)	Offset Wellbore Centre +N/-S (ft)	Offset Wellbore Centre +E/-W (ft)	Between Centres (ft)	Between Ellipses (ft)	Minimum Separation (ft)	Separation Factor	Warning
0.0	0.0	0.0	0.0	0.0	0.0	-89.98	-89.98	0.0	-88.8	88.9				
100.0	100.0	96.0	96.0	0.1	0.1	-89.98	-89.98	0.0	-88.8	88.8	88.6	0.22	403.155	
200.0	200.0	196.0	196.0	0.3	0.3	-89.98	-89.98	0.0	-88.8	88.8	88.1	0.67	133.482	
300.0	300.0	296.0	296.0	0.6	0.6	-89.98	-89.98	0.0	-88.8	88.8	87.7	1.11	79.659	
400.0	400.0	396.0	396.0	0.8	0.8	-89.98	-89.98	0.0	-88.8	88.8	87.2	1.56	56.768 CC, ES	
500.0	500.0	496.0	496.0	1.0	1.0	144.90	144.90	0.0	-88.8	89.5	87.5	1.99	44.907	
600.0	600.0	596.0	596.0	1.2	1.2	145.83	145.83	0.0	-88.8	91.7	89.3	2.41	37.984	
700.0	699.9	695.9	695.9	1.4	1.5	147.28	147.28	0.0	-88.8	95.3	92.5	2.84	33.510	
800.0	799.7	795.7	795.7	1.6	1.7	149.13	149.13	0.0	-88.8	100.5	97.2	3.28	30.614	
900.0	899.4	895.4	895.4	1.9	1.9	151.25	151.25	0.0	-88.8	107.3	103.6	3.73	28.791	
1,000.0	998.9	994.9	994.9	2.1	2.1	153.49	153.49	0.0	-88.8	115.8	111.6	4.18	27.733	
1,100.0	1,098.3	1,094.3	1,094.3	2.4	2.3	155.74	155.74	0.0	-88.8	126.1	121.4	4.63	27.239	
1,200.0	1,197.4	1,193.4	1,193.4	2.7	2.6	157.92	157.92	0.0	-88.8	138.1	133.0	5.08	27.172	
1,300.0	1,296.3	1,292.3	1,292.3	3.0	2.8	159.96	159.96	0.0	-88.8	151.9	146.4	5.54	27.435	
1,400.0	1,394.9	1,390.9	1,390.9	3.4	3.0	161.85	161.85	0.0	-88.8	167.4	161.4	5.99	27.933	
1,500.0	1,493.5	1,492.1	1,492.1	3.7	3.2	163.64	163.64	0.2	-88.1	182.9	176.4	6.45	28.353	
1,600.0	1,592.1	1,593.9	1,593.9	4.1	3.4	165.41	165.41	0.6	-85.6	196.9	190.0	6.89	28.565	
1,700.0	1,690.7	1,696.0	1,695.9	4.5	3.7	167.20	167.20	1.2	-81.3	209.6	202.3	7.34	28.559	
1,800.0	1,789.3	1,798.4	1,798.1	4.8	3.9	169.04	169.04	2.2	-75.1	221.0	213.2	7.79	28.374	
1,900.0	1,887.8	1,900.9	1,900.3	5.2	4.1	170.97	170.97	3.5	-67.2	231.2	222.9	8.24	28.043	
2,000.0	1,986.4	2,003.6	2,002.5	5.6	4.3	172.99	172.99	5.0	-57.4	240.1	231.4	8.70	27.591	
2,100.0	2,085.0	2,106.3	2,104.5	6.0	4.6	175.13	175.13	6.9	-45.9	248.0	238.8	9.17	27.037	
2,200.0	2,183.6	2,209.1	2,206.4	6.4	4.9	177.41	177.41	9.0	-32.5	254.8	245.1	9.65	26.395	
2,300.0	2,282.1	2,311.7	2,307.9	6.7	5.2	179.84	179.84	11.4	-17.3	260.6	250.5	10.15	25.677	
2,400.0	2,380.7	2,414.2	2,408.9	7.1	5.5	-177.56	-177.56	14.1	-0.4	265.7	255.0	10.67	24.894	
2,500.0	2,479.3	2,516.5	2,509.5	7.5	5.8	-174.78	-174.78	17.1	18.3	270.1	258.9	11.23	24.055	
2,600.0	2,577.9	2,615.7	2,606.7	7.9	6.1	-172.02	-172.02	20.2	37.3	274.5	262.7	11.81	23.243	
2,700.0	2,676.5	2,714.7	2,703.9	8.3	6.5	-169.36	-169.36	23.2	56.3	279.6	267.2	12.42	22.503	
2,800.0	2,775.0	2,813.7	2,801.0	8.7	6.8	-166.80	-166.80	26.2	75.3	285.2	272.1	13.07	21.828	
2,900.0	2,873.6	2,912.7	2,898.1	9.1	7.2	-164.34	-164.34	29.3	94.3	291.4	277.7	13.74	21.215	
3,000.0	2,972.2	3,011.8	2,995.3	9.5	7.6	-161.98	-161.98	32.3	113.3	298.1	283.7	14.43	20.658	
3,100.0	3,070.8	3,110.8	3,092.4	9.9	8.0	-159.73	-159.73	35.3	132.3	305.3	290.1	15.15	20.154	
3,200.0	3,169.4	3,209.8	3,189.6	10.3	8.3	-157.58	-157.58	38.4	151.3	312.9	297.1	15.89	19.700	
3,300.0	3,267.9	3,308.8	3,286.7	10.7	8.7	-155.54	-155.54	41.4	170.3	321.0	304.4	16.64	19.291	
3,400.0	3,366.5	3,407.9	3,383.8	11.0	9.1	-153.60	-153.60	44.4	189.3	329.5	312.1	17.41	18.924	
3,500.0	3,465.1	3,506.9	3,481.0	11.4	9.5	-151.76	-151.76	47.5	208.2	338.3	320.1	18.19	18.594	
3,600.0	3,563.7	3,605.9	3,578.1	11.8	9.9	-150.01	-150.01	50.5	227.2	347.4	328.4	18.99	18.300	
3,700.0	3,662.2	3,705.0	3,675.3	12.2	10.3	-148.35	-148.35	53.5	246.2	356.9	337.1	19.79	18.036	
3,800.0	3,760.8	3,804.0	3,772.4	12.6	10.7	-146.78	-146.78	56.5	265.2	366.6	346.0	20.60	17.801	
3,900.0	3,859.4	3,903.0	3,869.6	13.0	11.1	-145.29	-145.29	59.6	284.2	376.6	355.2	21.41	17.591	
4,000.0	3,958.0	4,002.0	3,966.7	13.4	11.5	-143.88	-143.88	62.6	303.2	386.9	364.7	22.23	17.405	
4,100.0	4,056.6	4,101.1	4,063.8	13.8	11.9	-142.54	-142.54	65.6	322.2	397.3	374.3	23.05	17.238	
4,200.0	4,155.1	4,200.1	4,161.0	14.2	12.3	-141.27	-141.27	68.7	341.2	408.0	384.1	23.87	17.090	
4,300.0	4,253.7	4,299.1	4,258.1	14.6	12.8	-140.06	-140.06	71.7	360.2	418.9	394.2	24.70	16.958	
4,400.0	4,352.3	4,398.2	4,355.3	15.0	13.2	-138.91	-138.91	74.7	379.2	429.9	404.4	25.53	16.841	
4,500.0	4,450.9	4,497.2	4,452.4	15.4	13.6	-137.83	-137.83	77.8	398.2	441.1	414.8	26.36	16.737	
4,600.0	4,549.4	4,596.2	4,549.5	15.8	14.0	-136.79	-136.79	80.8	417.2	452.5	425.3	27.18	16.645	
4,700.0	4,648.0	4,695.2	4,646.7	16.2	14.4	-135.81	-135.81	83.8	436.2	464.0	436.0	28.01	16.563	
4,800.0	4,746.6	4,794.3	4,743.8	16.6	14.8	-134.87	-134.87	86.9	455.2	475.6	446.7	28.84	16.490	
4,900.0	4,845.2	4,893.3	4,841.0	17.0	15.2	-133.98	-133.98	89.9	474.2	487.3	457.7	29.67	16.426	
5,000.0	4,943.8	4,992.3	4,938.1	17.4	15.7	-133.13	-133.13	92.9	493.2	499.2	468.7	30.49	16.370	

CC - Min centre to center distance or convergent point, SF - min separation factor, ES - min ellipse separation

Offset Design											SRC Eberle 14-32-31CHZM Pad Sec.32-T1N-R66W - SRC Eberle B-32NHZ - Wellbore #1 - Plan #1 (12			Offset Site Error:	0.0 ft
Survey Program: 0-MWD											Offset Well Error:			0.0 ft	
Reference		Offset		Semi Major Axis			Distance								
Measured Depth	Vertical Depth	Measured Depth	Vertical Depth	Reference	Offset	Highside Toolface	Offset Wellbore Centre		Between Centres	Between Ellipses	Minimum Separation	Separation Factor	Warning		
(ft)	(ft)	(ft)	(ft)	(ft)	(ft)	(°)	+N/-S (ft)	+E/-W (ft)	(ft)	(ft)	(ft)				
5,100.0	5,042.3	5,091.4	5,035.3	17.7	16.1	-132.32	96.0	512.2	511.1	479.8	31.32	16.320			
5,200.0	5,140.9	5,190.4	5,132.4	18.1	16.5	-131.55	99.0	531.2	523.2	491.0	32.14	16.276			
5,300.0	5,239.5	5,289.4	5,229.5	18.5	16.9	-130.81	102.0	550.1	535.3	502.4	32.97	16.238			
5,400.0	5,338.1	5,388.4	5,326.7	18.9	17.3	-130.10	105.1	569.1	547.5	513.8	33.79	16.204			
5,500.0	5,436.6	5,487.5	5,423.8	19.3	17.8	-129.43	108.1	588.1	559.9	525.2	34.61	16.175			
5,600.0	5,535.2	5,586.5	5,521.0	19.7	18.2	-128.78	111.1	607.1	572.2	536.8	35.43	16.149			
5,700.0	5,633.8	5,685.5	5,618.1	20.1	18.6	-128.16	114.2	626.1	584.7	548.4	36.25	16.128			
5,800.0	5,732.4	5,784.5	5,715.3	20.5	19.0	-127.57	117.2	645.1	597.2	560.1	37.07	16.109			
5,900.0	5,831.0	5,883.6	5,812.4	20.9	19.4	-127.00	120.2	664.1	609.8	571.9	37.89	16.093			
6,000.0	5,929.5	5,982.6	5,909.5	21.3	19.9	-126.46	123.3	683.1	622.4	583.7	38.71	16.080			
6,100.0	6,028.1	6,081.6	6,006.7	21.7	20.3	-125.93	126.3	702.1	635.1	595.5	39.52	16.069			
6,200.0	6,126.7	6,182.8	6,106.1	22.1	20.7	-125.50	129.3	720.8	647.7	607.4	40.30	16.073			
6,300.0	6,225.6	6,285.7	6,207.7	22.4	21.0	-125.38	131.8	736.5	658.7	617.8	40.90	16.106			
6,400.0	6,324.9	6,389.0	6,310.3	22.6	21.2	-125.29	133.7	748.7	667.1	625.7	41.41	16.111			
6,500.0	6,424.6	6,492.7	6,413.6	22.8	21.4	-125.23	135.1	757.2	673.0	631.2	41.84	16.087			
6,600.0	6,524.5	6,596.6	6,517.4	22.9	21.6	-125.19	135.8	762.0	676.3	634.1	42.18	16.034			
6,700.0	6,624.5	6,699.7	6,620.5	23.1	21.8	0.27	136.0	763.2	677.0	642.7	34.30	19.736			
6,800.0	6,724.5	6,799.7	6,720.5	23.2	21.9	0.27	136.0	763.2	677.0	642.4	34.64	19.546			
6,900.0	6,824.5	6,900.1	6,820.8	23.3	22.0	90.32	136.0	761.1	677.0	634.1	42.96	15.759			
7,000.0	6,923.3	7,000.6	6,920.2	23.3	22.0	90.32	136.0	746.4	677.0	634.1	42.93	15.769			
7,100.0	7,019.1	7,101.2	7,016.6	23.2	21.9	90.32	136.0	717.9	677.0	634.3	42.69	15.859			
7,200.0	7,110.1	7,201.8	7,108.0	23.0	21.7	90.32	135.9	676.2	677.0	634.7	42.30	16.006			
7,300.0	7,194.4	7,302.3	7,192.7	22.8	21.5	90.30	135.9	622.1	677.0	635.1	41.86	16.174			
7,400.0	7,270.4	7,402.8	7,268.9	22.6	21.3	90.28	135.8	556.7	676.9	635.5	41.50	16.313			
7,500.0	7,336.7	7,503.3	7,335.2	22.4	21.2	90.26	135.7	481.4	676.9	635.5	41.38	16.360			
7,600.0	7,391.9	7,603.7	7,390.4	22.3	21.3	90.23	135.6	397.5	676.9	635.2	41.65	16.250			
7,700.0	7,435.0	7,704.1	7,433.2	22.3	21.7	90.19	135.5	306.8	676.8	634.4	42.46	15.940			
7,800.0	7,465.1	7,804.4	7,462.9	22.6	22.4	90.15	135.4	211.1	676.8	632.9	43.86	15.431			
7,900.0	7,481.7	7,904.6	7,479.0	23.1	23.3	90.11	135.3	112.3	676.7	630.9	45.84	14.764			
8,000.0	7,485.0	8,004.7	7,482.0	24.1	24.5	90.08	135.1	12.3	676.7	628.4	48.31	14.009			
8,100.0	7,485.0	8,104.7	7,482.0	25.4	26.0	90.08	135.0	-87.7	676.7	625.4	51.24	13.205			
8,200.0	7,485.0	8,204.7	7,482.0	27.0	27.6	90.08	134.9	-187.7	676.6	622.0	54.60	12.392			
8,300.0	7,485.0	8,304.7	7,482.0	28.9	29.4	90.08	134.8	-287.7	676.6	618.3	58.31	11.604			
8,400.0	7,485.0	8,404.7	7,482.0	30.9	31.4	90.08	134.7	-387.7	676.5	614.2	62.30	10.860			
8,500.0	7,485.0	8,504.7	7,482.0	33.0	33.5	90.08	134.5	-487.7	676.5	610.0	66.52	10.170			
8,600.0	7,485.0	8,604.7	7,482.0	35.2	35.7	90.08	134.4	-587.7	676.4	605.5	70.94	9.536			
8,700.0	7,485.0	8,704.7	7,482.0	37.6	38.0	90.08	134.3	-687.7	676.4	600.9	75.51	8.958			
8,800.0	7,485.0	8,804.7	7,482.0	39.9	40.3	90.08	134.2	-787.7	676.4	596.1	80.21	8.432			
8,900.0	7,485.0	8,904.7	7,482.0	42.4	42.7	90.08	134.1	-887.7	676.3	591.3	85.03	7.954			
9,000.0	7,485.0	9,004.7	7,482.0	44.8	45.1	90.08	133.9	-987.7	676.3	586.3	89.94	7.519			
9,100.0	7,485.0	9,104.7	7,482.0	47.3	47.6	90.08	133.8	-1,087.7	676.2	581.3	94.92	7.124			
9,200.0	7,485.0	9,204.7	7,482.0	49.9	50.1	90.08	133.7	-1,187.7	676.2	576.2	99.97	6.764			
9,300.0	7,485.0	9,304.7	7,482.0	52.5	52.7	90.08	133.6	-1,287.7	676.1	571.1	105.08	6.435			
9,400.0	7,485.0	9,404.7	7,482.0	55.0	55.2	90.08	133.5	-1,387.7	676.1	565.9	110.24	6.133			
9,500.0	7,485.0	9,504.7	7,482.0	57.7	57.8	90.08	133.3	-1,487.7	676.1	560.6	115.43	5.857			
9,600.0	7,485.0	9,604.7	7,482.0	60.3	60.4	90.08	133.2	-1,587.7	676.0	555.3	120.67	5.602			
9,700.0	7,485.0	9,704.7	7,482.0	62.9	63.1	90.08	133.1	-1,687.7	676.0	550.0	125.93	5.368			
9,800.0	7,485.0	9,804.7	7,482.0	65.6	65.7	90.08	133.0	-1,787.7	675.9	544.7	131.23	5.151			
9,900.0	7,485.0	9,904.7	7,482.0	68.2	68.4	90.08	132.9	-1,887.7	675.9	539.3	136.55	4.950			
10,000.0	7,485.0	10,004.7	7,482.0	70.9	71.0	90.08	132.8	-1,987.7	675.8	533.9	141.89	4.763			
10,100.0	7,485.0	10,104.7	7,482.0	73.6	73.7	90.08	132.6	-2,087.7	675.8	528.5	147.25	4.589			

Company:	Synergy Resources	Local Co-ordinate Reference:	Well SRC Eberle 14-32-31NHZM
Project:	SEC.32-T1N-R66W	TVD Reference:	WELL @ 5045.0ft (RKB - 12')
Reference Site:	SRC Eberle 14-32-31CHZM Pad Sec.32-T1N-R66W	MD Reference:	WELL @ 5045.0ft (RKB - 12')
Site Error:	0.0ft	North Reference:	True
Reference Well:	SRC Eberle 14-32-31NHZM	Survey Calculation Method:	Minimum Curvature
Well Error:	0.0ft	Output errors are at	2.00 sigma
Reference Wellbore	Wellbore #1	Database:	Landmark
Reference Design:	Plan #2 (1-2-14)	Offset TVD Reference:	Offset Datum

Offset Design													Offset Site Error:	0.0 ft
Survey Program: 0-MWD													Offset Well Error:	0.0 ft
Reference		Offset		Semi Major Axis		Highside Toolface (°)	Distance		Between Centres (ft)	Between Ellipses (ft)	Minimum Separation (ft)	Separation Factor	Warning	
Measured Depth (ft)	Vertical Depth (ft)	Measured Depth (ft)	Vertical Depth (ft)	Reference (ft)	Offset (ft)		Offset Wellbore Centre +N/-S (ft)	+E/-W (ft)						
10,200.0	7,485.0	10,204.7	7,482.0	76.3	76.4	90.08	132.5	-2,187.7	675.7	523.1	152.63	4.427		
10,300.0	7,485.0	10,304.7	7,482.0	79.0	79.1	90.08	132.4	-2,287.7	675.7	517.7	158.03	4.276		
10,400.0	7,485.0	10,404.7	7,482.0	81.7	81.8	90.08	132.3	-2,387.7	675.7	512.2	163.44	4.134		
10,500.0	7,485.0	10,504.7	7,482.0	84.4	84.5	90.08	132.2	-2,487.7	675.6	506.8	168.86	4.001		
10,600.0	7,485.0	10,604.7	7,482.0	87.2	87.2	90.08	132.0	-2,587.7	675.6	501.3	174.30	3.876		
10,700.0	7,485.0	10,704.7	7,482.0	89.9	89.9	90.08	131.9	-2,687.7	675.5	495.8	179.74	3.758		
10,800.0	7,485.0	10,804.7	7,482.0	92.6	92.7	90.08	131.8	-2,787.7	675.5	490.3	185.20	3.647		
10,900.0	7,485.0	10,904.7	7,482.0	95.3	95.4	90.08	131.7	-2,887.7	675.4	484.8	190.66	3.543		
11,000.0	7,485.0	11,004.7	7,482.0	98.1	98.1	90.08	131.6	-2,987.7	675.4	479.3	196.13	3.444		
11,100.0	7,485.0	11,104.7	7,482.0	100.8	100.9	90.08	131.4	-3,087.7	675.4	473.7	201.61	3.350		
11,200.0	7,485.0	11,204.7	7,482.0	103.6	103.6	90.08	131.3	-3,187.7	675.3	468.2	207.10	3.261		
11,300.0	7,485.0	11,304.7	7,482.0	106.3	106.3	90.08	131.2	-3,287.7	675.3	462.7	212.59	3.176		
11,400.0	7,485.0	11,404.7	7,482.0	109.1	109.1	90.08	131.1	-3,387.7	675.2	457.1	218.09	3.096		
11,500.0	7,485.0	11,504.7	7,482.0	111.8	111.8	90.08	131.0	-3,487.7	675.2	451.6	223.59	3.020		
11,600.0	7,485.0	11,604.7	7,482.0	114.6	114.6	90.08	130.8	-3,587.7	675.1	446.0	229.10	2.947		
11,700.0	7,485.0	11,704.7	7,482.0	117.3	117.3	90.08	130.7	-3,687.7	675.1	440.5	234.62	2.877		
11,800.0	7,485.0	11,804.7	7,482.0	120.1	120.1	90.08	130.6	-3,787.7	675.0	434.9	240.13	2.811		
11,900.0	7,485.0	11,904.7	7,482.0	122.9	122.9	90.08	130.5	-3,887.7	675.0	429.3	245.66	2.748		
11,962.6	7,485.0	11,967.4	7,482.0	124.6	124.6	90.08	130.4	-3,950.3	675.0	425.9	249.12	2.709		
12,000.0	7,485.0	11,981.6	7,482.0	125.6	125.0	90.08	130.4	-3,964.6	675.4	424.8	250.54	2.696 SF		
12,100.0	7,485.0	11,981.6	7,482.0	128.4	125.0	90.08	130.4	-3,964.6	686.1	432.7	253.31	2.708		
12,200.0	7,485.0	11,981.6	7,482.0	131.2	125.0	90.08	130.4	-3,964.6	710.8	454.7	256.08	2.776		
12,300.0	7,485.0	11,981.6	7,482.0	133.9	125.0	90.08	130.4	-3,964.6	748.2	489.3	258.85	2.890		
12,400.0	7,485.0	11,981.6	7,482.0	136.7	125.0	90.08	130.4	-3,964.6	796.5	534.8	261.62	3.044		
12,500.0	7,485.0	11,981.6	7,482.0	139.5	125.0	90.08	130.4	-3,964.6	853.8	589.4	264.39	3.229		
12,600.0	7,485.0	11,981.6	7,482.0	142.2	125.0	90.08	130.4	-3,964.6	918.4	651.2	267.16	3.438		
12,700.0	7,485.0	11,981.6	7,482.0	145.0	125.0	90.08	130.4	-3,964.6	989.0	719.0	269.94	3.664		
12,800.0	7,485.0	11,981.6	7,482.0	147.8	125.0	90.08	130.4	-3,964.6	1,064.2	791.5	272.72	3.902		
12,900.0	7,485.0	11,981.6	7,482.0	150.6	125.0	90.08	130.4	-3,964.6	1,143.3	867.8	275.49	4.150		
13,000.0	7,485.0	11,981.6	7,482.0	153.3	125.0	90.08	130.4	-3,964.6	1,225.4	947.2	278.27	4.404		
13,100.0	7,485.0	11,981.6	7,482.0	156.1	125.0	90.08	130.4	-3,964.6	1,310.1	1,029.0	281.05	4.661		
13,200.0	7,485.0	11,981.6	7,482.0	158.9	125.0	90.08	130.4	-3,964.6	1,396.7	1,112.9	283.83	4.921		
13,300.0	7,485.0	11,981.6	7,482.0	161.7	125.0	90.08	130.4	-3,964.6	1,485.1	1,198.5	286.61	5.181		
13,400.0	7,485.0	11,981.6	7,482.0	164.5	125.0	90.08	130.4	-3,964.6	1,574.8	1,285.4	289.39	5.442		
13,500.0	7,485.0	11,981.6	7,482.0	167.2	125.0	90.08	130.4	-3,964.6	1,665.7	1,373.5	292.17	5.701		
13,600.0	7,485.0	11,981.6	7,482.0	170.0	125.0	90.08	130.4	-3,964.6	1,757.6	1,462.6	294.95	5.959		
13,700.0	7,485.0	11,981.6	7,482.0	172.8	125.0	90.08	130.4	-3,964.6	1,850.3	1,552.6	297.74	6.215		
13,800.0	7,485.0	11,981.6	7,482.0	175.6	125.0	90.08	130.4	-3,964.6	1,943.8	1,643.2	300.52	6.468		
13,900.0	7,485.0	11,981.6	7,482.0	178.4	125.0	90.08	130.4	-3,964.6	2,037.8	1,734.5	303.31	6.719		
14,000.0	7,485.0	11,981.6	7,482.0	181.2	125.0	90.08	130.4	-3,964.6	2,132.4	1,826.4	306.09	6.967		
14,100.0	7,485.0	11,981.6	7,482.0	183.9	125.0	90.08	130.4	-3,964.6	2,227.5	1,918.7	308.88	7.212		
14,200.0	7,485.0	11,981.6	7,482.0	186.7	125.0	90.08	130.4	-3,964.6	2,323.0	2,011.4	311.66	7.454		
14,300.0	7,485.0	11,981.6	7,482.0	189.5	125.0	90.08	130.4	-3,964.6	2,418.9	2,104.4	314.45	7.692		
14,400.0	7,485.0	11,981.6	7,482.0	192.3	125.0	90.08	130.4	-3,964.6	2,515.1	2,197.8	317.24	7.928		
14,500.0	7,485.0	11,981.6	7,482.0	195.1	125.0	90.08	130.4	-3,964.6	2,611.5	2,291.5	320.03	8.160		
14,600.0	7,485.0	11,981.6	7,482.0	197.9	125.0	90.08	130.4	-3,964.6	2,708.3	2,385.4	322.82	8.390		
14,645.7	7,485.0	11,981.6	7,482.0	199.2	125.0	90.08	130.4	-3,964.6	2,752.6	2,428.5	324.09	8.493		

Company:	Synergy Resources	Local Co-ordinate Reference:	Well SRC Eberle 14-32-31NHZM
Project:	SEC.32-T1N-R66W	TVD Reference:	WELL @ 5045.0ft (RKB - 12')
Reference Site:	SRC Eberle 14-32-31CHZM Pad Sec.32-T1N-R66W	MD Reference:	WELL @ 5045.0ft (RKB - 12')
Site Error:	0.0ft	North Reference:	True
Reference Well:	SRC Eberle 14-32-31NHZM	Survey Calculation Method:	Minimum Curvature
Well Error:	0.0ft	Output errors are at	2.00 sigma
Reference Wellbore	Wellbore #1	Database:	Landmark
Reference Design:	Plan #2 (1-2-14)	Offset TVD Reference:	Offset Datum

Reference Depths are relative to WELL @ 5045.0ft (RKB - 12')

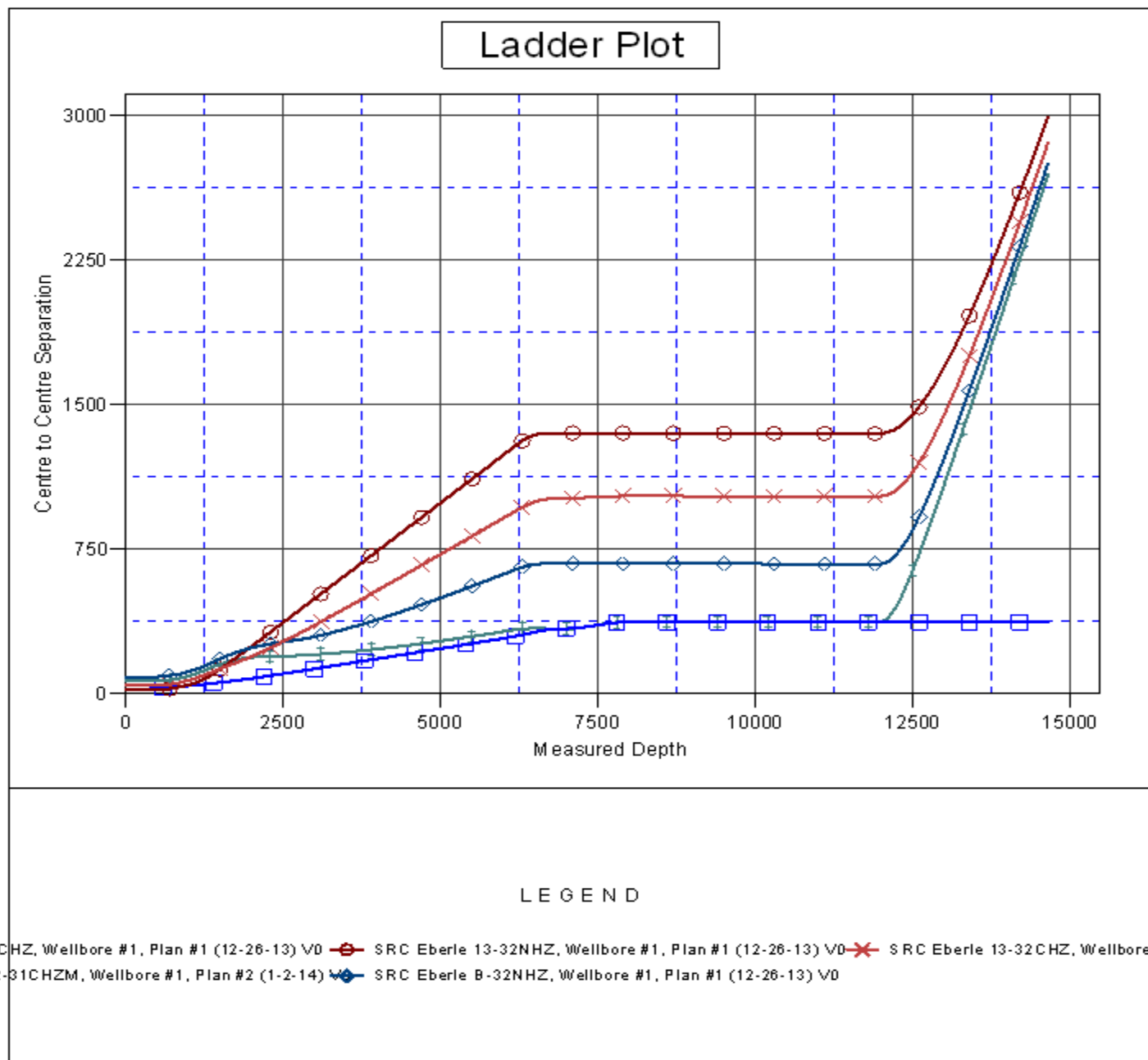
Offset Depths are relative to Offset Datum

Central Meridian is -105.500000 °

Coordinates are relative to: SRC Eberle 14-32-31NHZM

Coordinate System is US State Plane 1983, Colorado Northern Zone

Grid Convergence at Surface is: 0.46°



Company:	Synergy Resources	Local Co-ordinate Reference:	Well SRC Eberle 14-32-31NHZM
Project:	SEC.32-T1N-R66W	TVD Reference:	WELL @ 5045.0ft (RKB - 12')
Reference Site:	SRC Eberle 14-32-31CHZM Pad Sec.32-T1N-R66W	MD Reference:	WELL @ 5045.0ft (RKB - 12')
Site Error:	0.0ft	North Reference:	True
Reference Well:	SRC Eberle 14-32-31NHZM	Survey Calculation Method:	Minimum Curvature
Well Error:	0.0ft	Output errors are at	2.00 sigma
Reference Wellbore	Wellbore #1	Database:	Landmark
Reference Design:	Plan #2 (1-2-14)	Offset TVD Reference:	Offset Datum

Reference Depths are relative to WELL @ 5045.0ft (RKB - 12')
 Offset Depths are relative to Offset Datum
 Central Meridian is -105.500000 °

Coordinates are relative to: SRC Eberle 14-32-31NHZM
 Coordinate System is US State Plane 1983, Colorado Northern Zone
 Grid Convergence at Surface is: 0.46°

