

**ANADARKO PETROLEUM CORP - EBUS
DO NOT MAIL - PO BOX 4995
THE WOODLANDS, Texas**

Howard 29C-21HZ

MAJORS 42

Post Job Summary **Cement Surface Casing**

Prepared for:
Date Prepared: 6/20/2013
Version: 1

Service Supervisor: FANTASIA, JOSEPH

Submitted by: FINNEY, SEAN

HALLIBURTON

HALLIBURTON

Wellbore Geometry

Job Tubulars					MD		Shoe Joint Length ft
Type	Description	Size in	ID in	Wt lbm/ft	Top ft	Bottom ft	
Casing	9 5/8" Surface Casing	9.63	8.921	36.00	0.00	921.00	43.00
Open Hole Section	13 1/2" Open Hole Section		13.500		0.00	931.00	0.00

Tubular Specification				Coupling Information		
Type	Description	Thread	Grade	OD in	Length in	Joint Length
Casing	9 5/8" Surface Casing	8 RD	J-55		0.00	0.00

HALLIBURTON

Pumping Schedule

Stage / Plug #	Fluid #	Fluid Type	Fluid Name	Surface Density lbm/gal	Avg Rate bbl/min	Surface Volume	Downhole Volume
1	1	Spacer	Fresh Water Spacer	8.33	4.00	10.0 bbl	10.0 bbl
1	2	Spacer	MUD FLUSH III	8.40	4.00	12.0 bbl	12.0 bbl
1	3	Spacer	Fresh Water Spacer	8.33	4.00	10.0 bbl	10.0 bbl
1	4	Cement Slurry	SwiftCem B2	14.20	5.00	353.0 sacks	353.0 sacks

Fluids Pumped

Stage/Plug # 1 Fluid 1: Fresh Water Spacer
DUMMY MUD / FLUSH / SPACER SBC MATERIAL

Fluid Density: 8.33 lbm/gal
Fluid Volume: 10.00 bbl
Pump Rate: 4.00 bbl/min

Stage/Plug # 1 Fluid 2: MUD FLUSH III
MUD FLUSH III - SBM (528788)

Fluid Density: 8.40 lbm/gal
Fluid Volume: 12.00 bbl
Pump Rate: 4.00 bbl/min

Stage/Plug # 1 Fluid 3: Fresh Water Spacer
DUMMY MUD / FLUSH / SPACER SBC MATERIAL

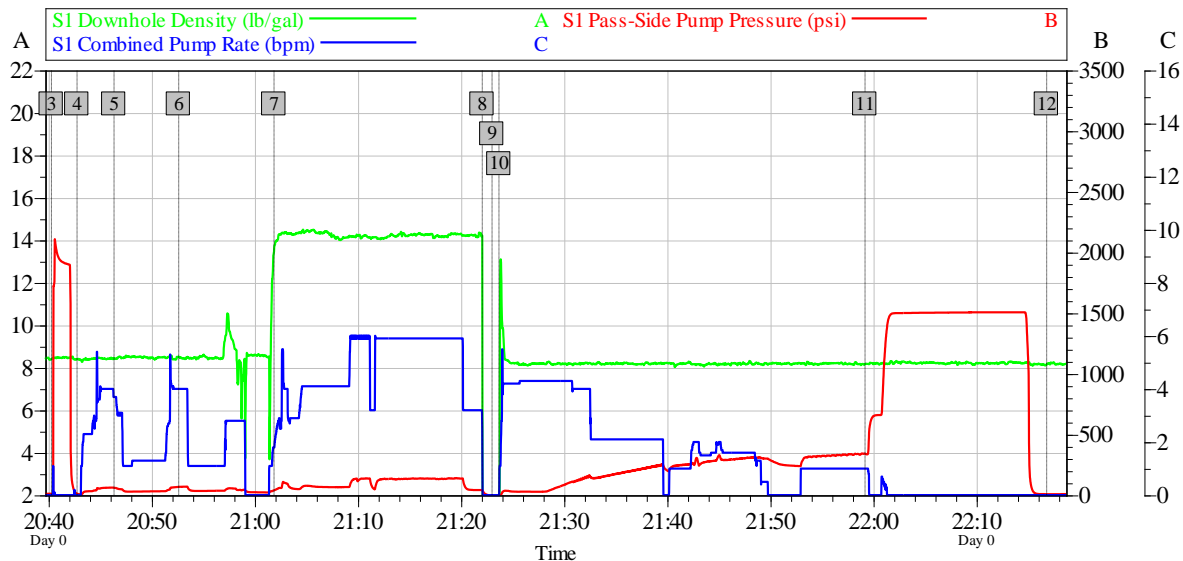
Fluid Density: 8.33 lbm/gal
Fluid Volume: 10.00 bbl
Pump Rate: 4.00 bbl/min

Stage/Plug # 1 Fluid 4: SwiftCem B2
SWIFTCEN (TM) SYSTEM
0.125 lbm Poly-E-Flake

Fluid Weight: 14.20 lbm/gal
Slurry Yield: 1.54 ft³/sack
Total Mixing Fluid: 7.67 Gal
Surface Volume: 353.0 sacks
Sacks: 353.0 sacks
Calculated Fill: 900.00 ft
Calculated Top of Fluid: 5.00 ft

Data Acquisition

ANADARKO HOWARD 29C-21HZ SURFACE



Global Event Log

Intersection	SPPP	Intersection	SPPP	Intersection	SPPP
3 Test Lines	20:40:17 12.00	4 Pump Spacer 1	20:42:46 12.00	5 Pump Spacer 2	20:46:21 60.00
6 Pump Spacer 1	20:52:38 68.00	7 Pump Cement	21:01:52 39.00	8 Shutdown	21:22:04 41.22
9 Drop Top Plug	21:23:01 -1.000	10 Pump Displacement	21:23:42 -3.000	11 Bump Plug	21:59:12 342.0
12 End Job	22:16:49 8.000				

Customer:	Job Date: 17-Jun-2013	Sales Order #: 900521040	OptiCem v6.4.10
Well Description:	UWI:		17-Jun-13 22:32

HALLIBURTON

Service Supervisor Reports

Job Log

Date/Time	Chart #	Activity Code	Pump Rate	Cum Vol	Pump		Pressure (psig)	Comments
06/17/2013 17:00		Arrive at Location from Service Center						ARRIVE AT LOCATION
06/17/2013 17:15		Assessment Of Location Safety Meeting						PERFORM SITE ASSESSMENT AND HAZARD HUNT WITH CREW PRIOR TO SPOTTING EQUIPMENT AND RIGGING UP.
06/17/2013 20:30		Start Job						PERFORM PRE-JOB SAFETY MEETING WITH ALL PRESENT PERSONELL PRIOR TO JOB
06/17/2013 20:40		Test Lines					2190.0	PRESSURE TEST LINES TO 2000 PSI.
06/17/2013 20:42		Pump Spacer 1	4	10			48.0	PUMP 10 BBLS WATER
06/17/2013 20:46		Pump Spacer 2	4	12			60.0	PUMP 12 BBLS MUDFLUSH
06/17/2013 20:52		Pump Spacer 1	4	10			68.0	PUMP 10 BBLS WATER
06/17/2013 21:01		Pump Cement	5	97			110.0	353 SKS SWIFTCM MIXED AT 14.2 PPG USING RIG WATER
06/17/2013 21:22		Shutdown						
06/17/2013 21:23		Drop Top Plug						PLUG PRELOADED
06/17/2013 21:24		Pump Displacement	6	69			48.0	GOOD RETURNS THROUGHOUT. CEMENT TO SURFACE AT 59 BBLS OUT OF 69 BBLS TOTAL DISPLACEMENT. APPROX 10 BBLS CEMENT TO SURFACE.
06/17/2013 21:59		Bump Plug	2				342.0	PLUG LANDED AT 342 PSI AND BROUGHT TO 600 PSI. PRESSURE THEN WALKED UP TO 1500 PSI FOR 15 MIN FOR CASING PRESSURE TEST.
06/17/2013 22:16		Check Floats						FLOATS HELD
06/17/2013 22:30		End Job						PERFORM PRE RIG DOWN SAFETY MEETING

The Road to Excellence Starts with Safety

Sold To #: 300466	Ship To #: 3003847	Quote #:	Sales Order #: 900521040
Customer: ANADARKO PETROLEUM CORP - EBUS		Customer Rep: Hersh, Larry	
Well Name: Howard		Well #: 29C-21HZ	API/UWI #: 05-123-36794
Field: Wattenberg	City (SAP): DACONO	County/Parish: Weld	State: Colorado
Lat: N 40.03 deg. OR N 40 deg. 1 min. 48.626 secs.		Long: W 104.899 deg. OR W -105 deg. 6 min. 2.315 secs.	
Contractor: MAJORS		Rig/Platform Name/Num: MAJORS 42	
Job Purpose: Cement Surface Casing			
Well Type: Development Well		Job Type: Cement Surface Casing	
Sales Person: PLIENESS, RYAN		Srvc Supervisor: FANTASIA, JOSEPH	MBU ID Emp #: 485445

Job Personnel

HES Emp Name	Exp Hrs	Emp #	HES Emp Name	Exp Hrs	Emp #	HES Emp Name	Exp Hrs	Emp #
CHISLUM, DENNIS	6.0	512130	FANTASIA, JOSEPH Brandon	6.0	485445	HINKLE, BRADLEY Dean	6.0	512123

Equipment

HES Unit #	Distance-1 way	HES Unit #	Distance-1 way	HES Unit #	Distance-1 way	HES Unit #	Distance-1 way
10866493C	7 mile	11064046C	7 mile	11410470C	7 mile	11562562	7 mile

Job Hours

Date	On Location Hours	Operating Hours	Date	On Location Hours	Operating Hours	Date	On Location Hours	Operating Hours
TOTAL								

Total is the sum of each column separately

Job

Job Times

Formation Name					Called Out	Date	Time	Time Zone
Formation Depth (MD)	Top		Bottom		On Location	17 - Jun - 2013	12:30	MST
Form Type		BHST			Job Started	17 - Jun - 2013	17:00	MST
Job depth MD	931. ft	Job Depth TVD	931. ft		Job Completed	17 - Jun - 2013	20:30	MST
Water Depth		Wk Ht Above Floor			Deparated Loc	17 - Jun - 2013	22:15	MST
Perforation Depth (MD)	From		To			17 - Jun - 2013	23:00	MST

Well Data

Description	New / Used	Max pressure psig	Size in	ID in	Weight lbm/ft	Thread	Grade	Top MD ft	Bottom MD ft	Top TVD ft	Bottom TVD ft
13 1/2" Open Hole Section				13.5				.	931.		
9 5/8" Surface Casing	New		9.625	8.921	36.	8 RD	J-55	.	921.		

Fluid Data

Stage/Plug #: 1

Fluid #	Stage Type	Fluid Name	Qty	Qty uom	Mixing Density lbm/gal	Yield ft3/sk	Mix Fluid Gal/sk	Rate bbl/min	Total Mix Fluid Gal/sk
---------	------------	------------	-----	---------	------------------------	--------------	------------------	--------------	------------------------

1	Fresh Water Spacer		10.00	bbl	8.33	.0	.0	4.0	
2	MUD FLUSH III	MUD FLUSH III - SBM (528788)	12.00	bbl	8.4	.0	.0	4.0	
3	Fresh Water Spacer		10.00	bbl	8.33	.0	.0	4.0	
4	SwiftCem B2	SWIFTCM (TM) SYSTEM (452990)	353.0	sacks	14.2	1.54	7.67	5.0	7.67
0.125 lbm		POLY-E-FLAKE (101216940)							
7.67 Gal		FRESH WATER							
Calculated Values		Pressures		Volumes					
Displacement		Shut In: Instant		Lost Returns		Cement Slurry		Pad	
Top Of Cement		5 Min		Cement Returns		Actual Displacement		Treatment	
Frac Gradient		15 Min		Spacers		Load and Breakdown		Total Job	
Rates									
Circulating		Mixing		Displacement		Avg. Job			
Cement Left In Pipe	Amount	43 ft	Reason	Shoe Joint					
Frac Ring # 1 @	ID	Frac ring # 2 @	ID	Frac Ring # 3 @	ID	Frac Ring # 4 @	ID		
The Information Stated Herein Is Correct				Customer Representative Signature					

