



**Chevron
U.S.A., Inc.**

WELL NO.: U.P. 78X-21
(4918)
FIELD: RANGELY. CO.

SURVEY DATA

RUN NO. 26	
SURVEY TYPE : T-S	SURFACE TEMP : 82.0 F
DATE : 11/15/2013	BHT : 136.8 F
METERED RATE : 590 B/D	TBG PRESSURE : 1740 PSI
MEASURED RATE: 380 B/D	CSG PRESSURE : 0 PSI
DESIRED RATE : N/A	PICK-UP : 6463'
SERVICE CO. : PLS	INJ. FLUID : H2O

REMARKS

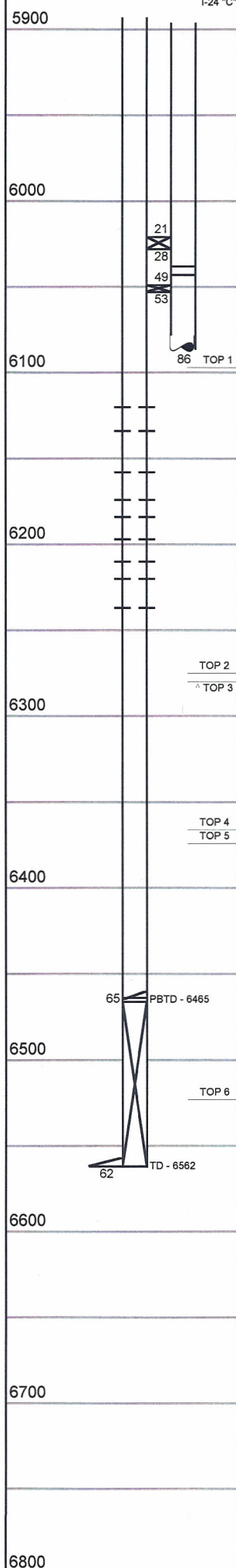
R/A TRACER INDICATES TOP PERF AND PACKERS
OK.
RECORDED BY: MATT STRATTON

11/15/13, RAN 1.75" GAUGE RING TO 6476' WITH NO
PROBLEMS.

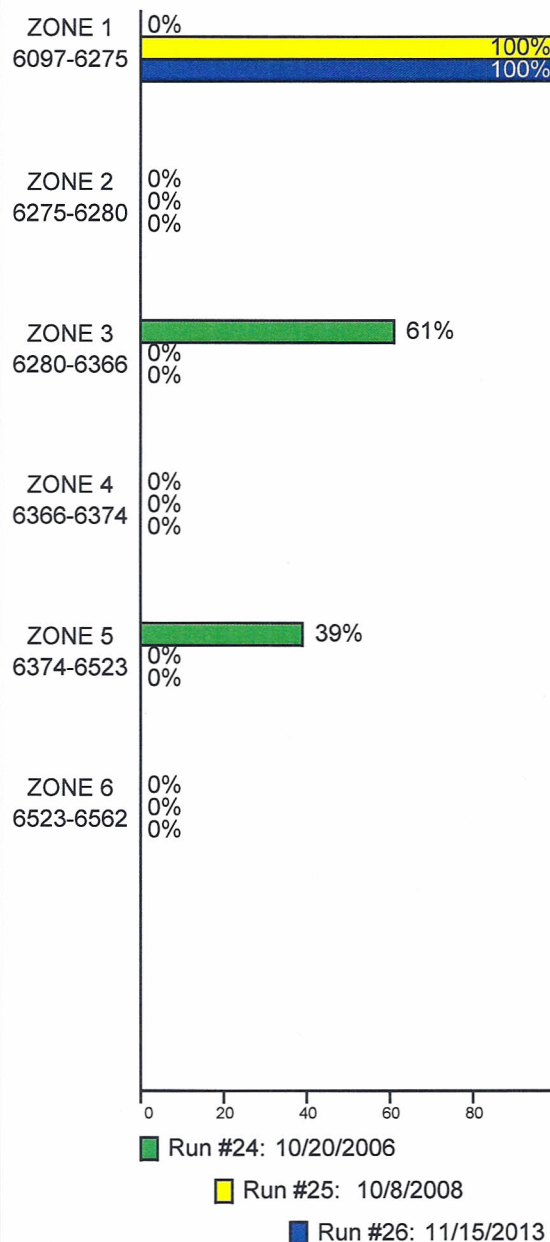
INJECTION PROFILE

MECHANICAL INFORMATION

MECHANICAL INFORMATION	
7" 23# CASING	0-6562
5-1/2" 17# CASING	0-6465
P.B.T.D.	6465
2-7/8" F.L. TUBING	0-6021
PACKER	6021'-6028"
2-7/8" F.G.W. TUBING	6028'-6038"
ON/OFF TOOL 1.875" "F"	6038'-6043"
2-3/8" F.G.W. TUBING	6043'-6049"
PACKER	6049'-6053"
2-7/8" F.G.W. TUBING	6053'-6086"
	1-24 "C"



PERCENTAGE INJECTED INTO
ZONE



TEMPERATURES (F°)

DATE	RUN #24 10/20/2006	RUN #25 10/8/2008	RUN #26 11/15/2013
SURFACE	103.0	98.1	82.0
6097-6275	---	---	---
6275-6280	---	---	---
6280-6366	---	---	---
6366-6374	---	---	---
6374-6523	---	---	---
TDL (6463)	110.9	134.4	136.8
6523-6562	---	---	---
RATE (B/D)	1371	260	380
PRESS (PSI)	1600	1450	1740