



**Chevron
U.S.A., Inc.**

WELL NO.: ROOTH 1
(0409)
FIELD . . . : RANGELY, CO.

SURVEY DATA

REMARKS

RUN NO. 5	
SURVEY TYPE . . . T-S-T	SURFACE TEMP . . 104.2 F
DATE 11/19/2013	BHT 111.9 F
METERED RATE . . 4500 B/D	TBG PRESSURE . . 850 PSI
MEASURED RATE: 3306 B/D	CSG PRESSURE . . 0 PSI
DESIRED RATE . . N/A	PICK-UP 6753'
SERVICE CO. . . . PLS	INJ. FLUID H2O

R/A TRACER INDICATES PACKERS AND CASING
SHOE OK.

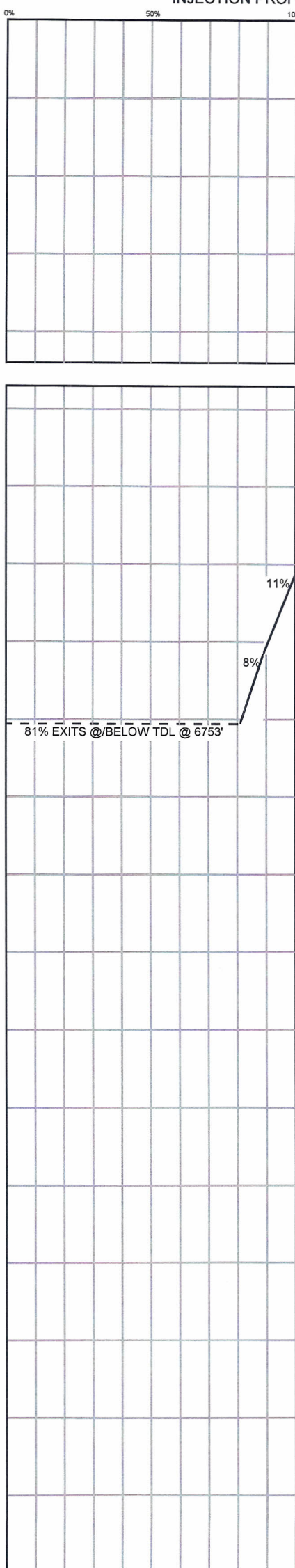
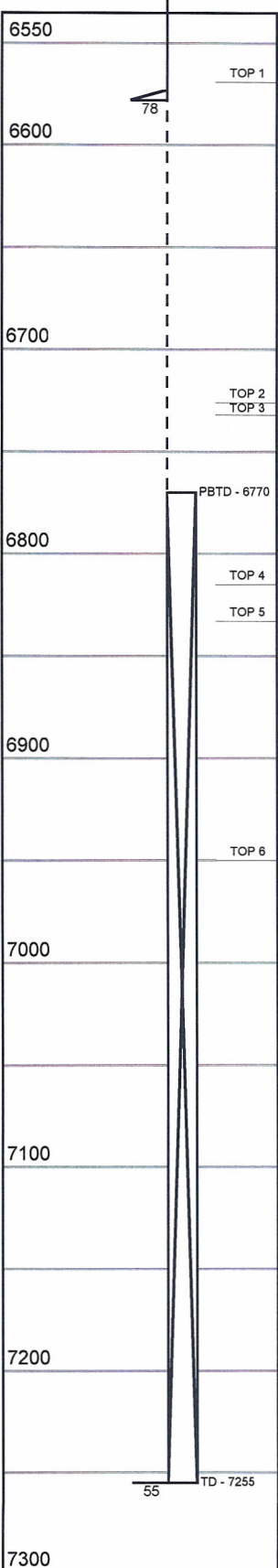
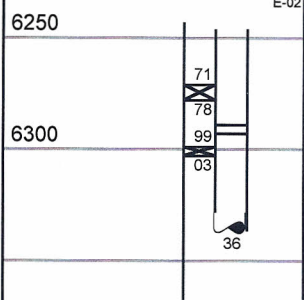
RECORDED BY: MATT STRATTON

10/21/13, RAN 1.75" GAUGE RING TO 6750'

INJECTION PROFILE

MECHANICAL INFORMATION

7" 23# CASING	0-8578'
OPEN HOLE	6578'-7255'
P.B.T.D.	6770'
2-7/8" 7.3# F.L. TUBING	0-6271'
TOP PACKER	6271'-6278'
2-7/8" FGW TK-15 PUP	6278'-6289'
ON/OFF TOOL 1.875"	6289'-6293'
2-7/8" F.G.W. PUP	6293'-6299'
PACKER	6299'-6303'
2-7/8" FGW TK-15 PUP	6303'-6336'



PERCENTAGE INJECTED INTO
ZONE

ZONE 1
6569-6726



Category	Percentage
Red	22%
Yellow	14%
Blue	15%




ZONE 2	0%
6726-6732	0%
	0%

ZONE 3 6732-6815	(EXITS @/BELOW TDL @6749')	78%
	(75% EXITS @/BELOW TDL @6752')	86%
	(81% EXITS @/BELOW TDL @ 6753')	85%

ZONE 4	0%
6815-6833	0%
	0%

ZONE 5	0%
6833-6950	0%

ZONE 6	0%
6950-7255	0%
	0%

 Run #3: 5/2/2007
 (Red Indicates a CO₂ Run)
 Run #4: 5/21/2008
 Run #5: 11/19/2013

TEMPERATURES (F°)

DATE	RUN #3 5/2/2007	RUN #4 5/21/2008	RUN #5 11/19/2013
SURFACE	80.7	112.5	104.2
6569-6726	---	---	---
6726-6732	---	---	---
6732-6815	---	---	---
TDL (6753)	123.9	116.3	111.9
6815-6833	---	---	---
6833-6950	---	---	---
6950-7255	---	---	---
RATE (B/D)	4420	3859	3306
PRESS (PSI)	1900	1340	850