

Chevron
U.S.A., Inc.

WELL NO.: A.C. McLAUGHLIN 18
(1207)
FIELD . . . : RANGELY, CO.

SURVEY DATA

REMARKS

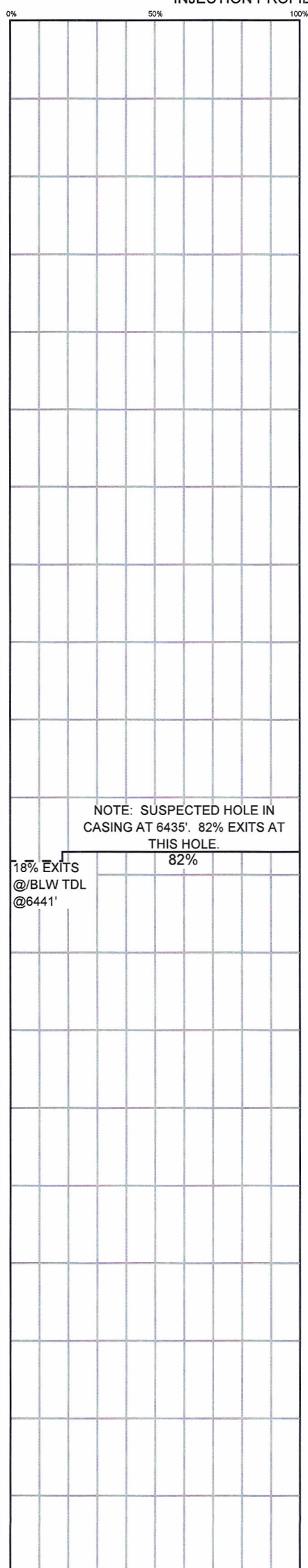
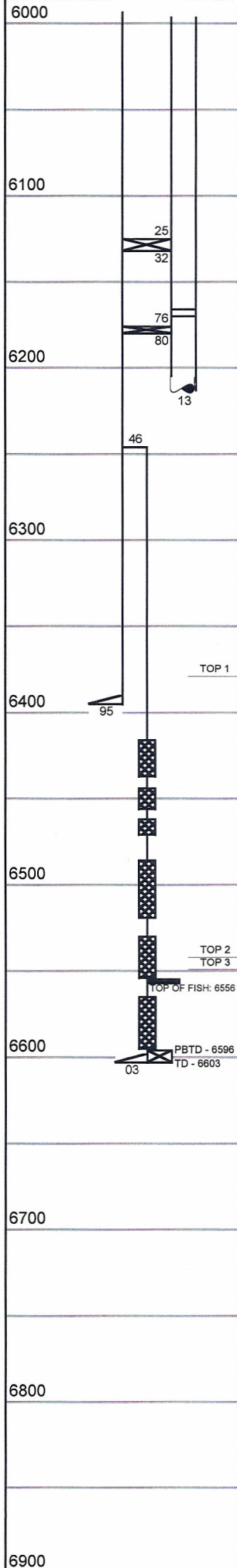
RUN NO. 19	
SURVEY TYPE : T-S-T	SURFACE TEMP. : 104.5 F
DATE : 11/19/2013	BHT : 114.9 F
METERED RATE : 2400 B/D	TBG PRESSURE : 1640 PSI
MEASURED RATE: 1650 B/D	CSG PRESSURE : 0 PSI
DESIGNED RATE : N/A	PICK-UP : 6441'
SERVICE CO. : PLS	INJ. FLUID : H2O

R/A TRACER INDICATES PACKERS AND LINER TOP OK.
RECORDED BY: MATT STRATTON
NOTE: SUSPECTED CASING DAMAGE FROM 6420'-6441'±
11/19/13, RAN 1.75" GAUGE RING TO 6449' WITH NO PROBLEMS. UNABLE TO GET ANY DEEPER.

INJECTION PROFILE

MECHANICAL INFORMATION

7" 23# CASING	0-6395'
5-1/2" 20# LINER	6246'-6603'
P.B.T.D.	6596'
TOP OF FISH	6556'
2-7/8" F.L. TUBING	0-6125'
TOP PACKER	6125'-6132'
2-7/8" F.G.W. TUBING	6132'-6166'
ON/OFF TOOL 1.875" "F"	6166'-6170'
2-7/8" F.G.W. TUBING	6170'-6176'
PACKER	6176'-6180'
2-7/8" F.G.W. TUBING	6180'-6213'

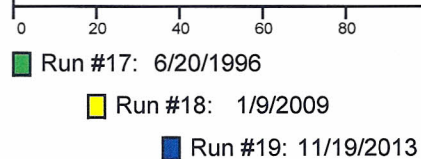


PERCENTAGE INJECTED INTO
ZONE

ZONE 1	100%
6379-6542	(66% EXITS @/BELOW TDL @ 6523') 100%
	(18% EXITS @/BELOW TDL @ 6441') 100%

ZONE 2	0%
6542-6549	0%
	0%

ZONE 3	0%
6549-6603	0%
	0%



TEMPERATURES (F°)

DATE	RUN #17 6/20/1996	RUN #18 1/9/2009	RUN #19 11/19/2013
SURFACE	111.1	109.1	104.5
6379-6542	---	---	---
TDL (6441)	120.7	113.9	114.9
6542-6549	---	---	---
6549-6603	---	---	---
RATE (B/D)	2000	2400	1650
PRESS (PSI)	800	1250	1640