



Digital Drilling Data
Systems, LLC

MD Lateral

(Scale: 5":100' (10'))

Company: Cathedral Energy Services

State: CO

Well: Mathwes 4F-14H

County: Weld

Field: DJ

Country: US

Well ID: 051233684000

Job Number: 135269

Location: Weld

Elev KB: 5117

Operator 1: Encana Oil & Gas

Elev DF: 5117

Operator 2: Andrew Stewart

Elev GL: 5104

Comment 1:

Comment 2:

Comment 3:

Comment 4:

Comment 5:

Hole Data

Casing Record

Size	From	To	Size	From	To
12.25	0	1414	9.625	0	1406
8.75	1414	7920	7	1406	7920
6.125	7920	12185			

Tool Run Data

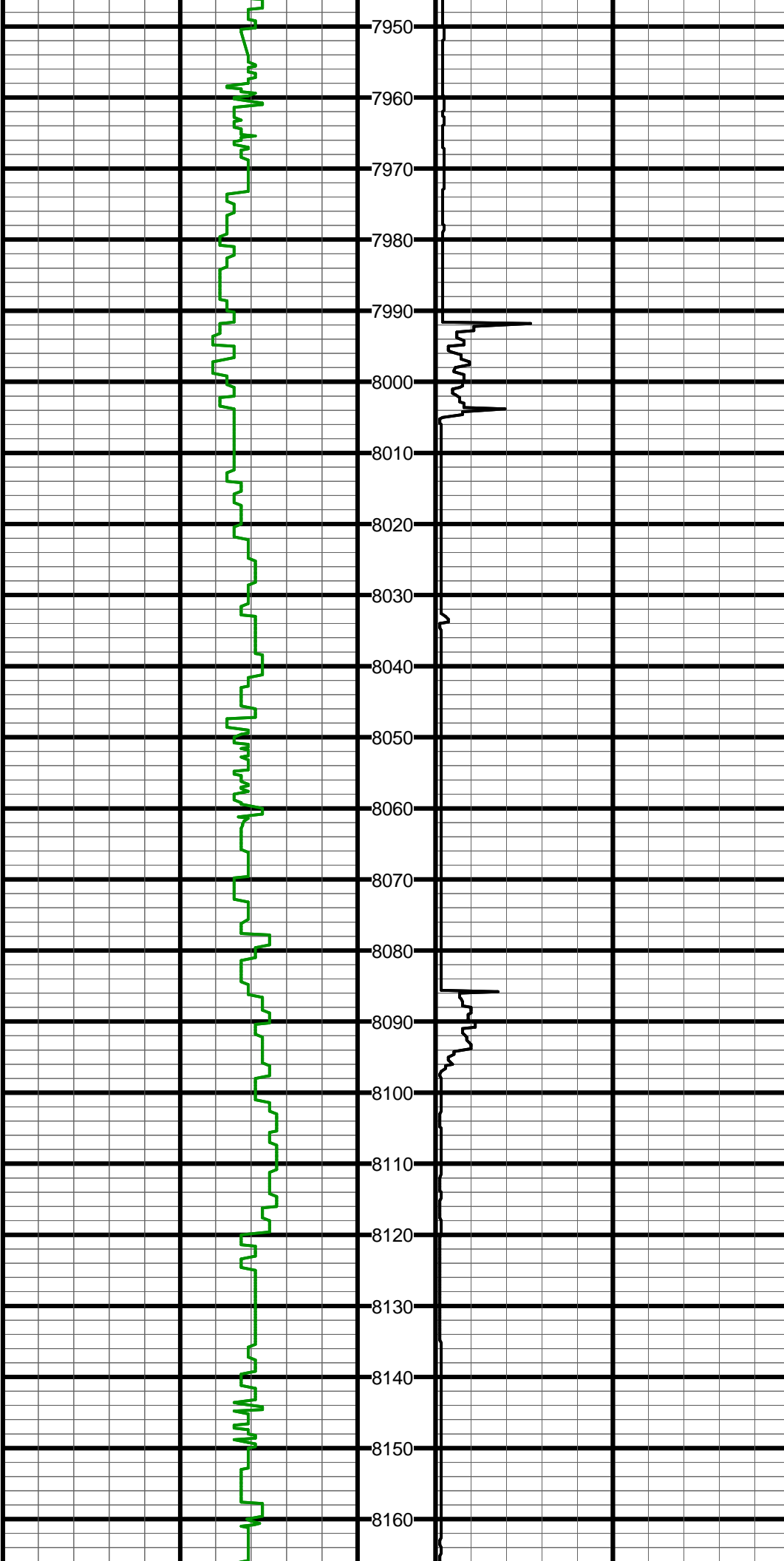
Run #1	Run #2	Run #3	Run #4	Run #5
1061	1061	1061		
4.15	4.15	2.98		
38.92	38.92	35.66		
5000	7281	7920		
7/3/2013	7/6/2013	7/9/2013		
0300	2100	1400		
7281	7920	12185		
7/6/2013	7/8/2013	7/13/2013		
2000	0900	1630		

ROP (MD) Track: 1
Min/Ft
0.00 15.00
15 30 45
30 45

Depth
5":100' (10")

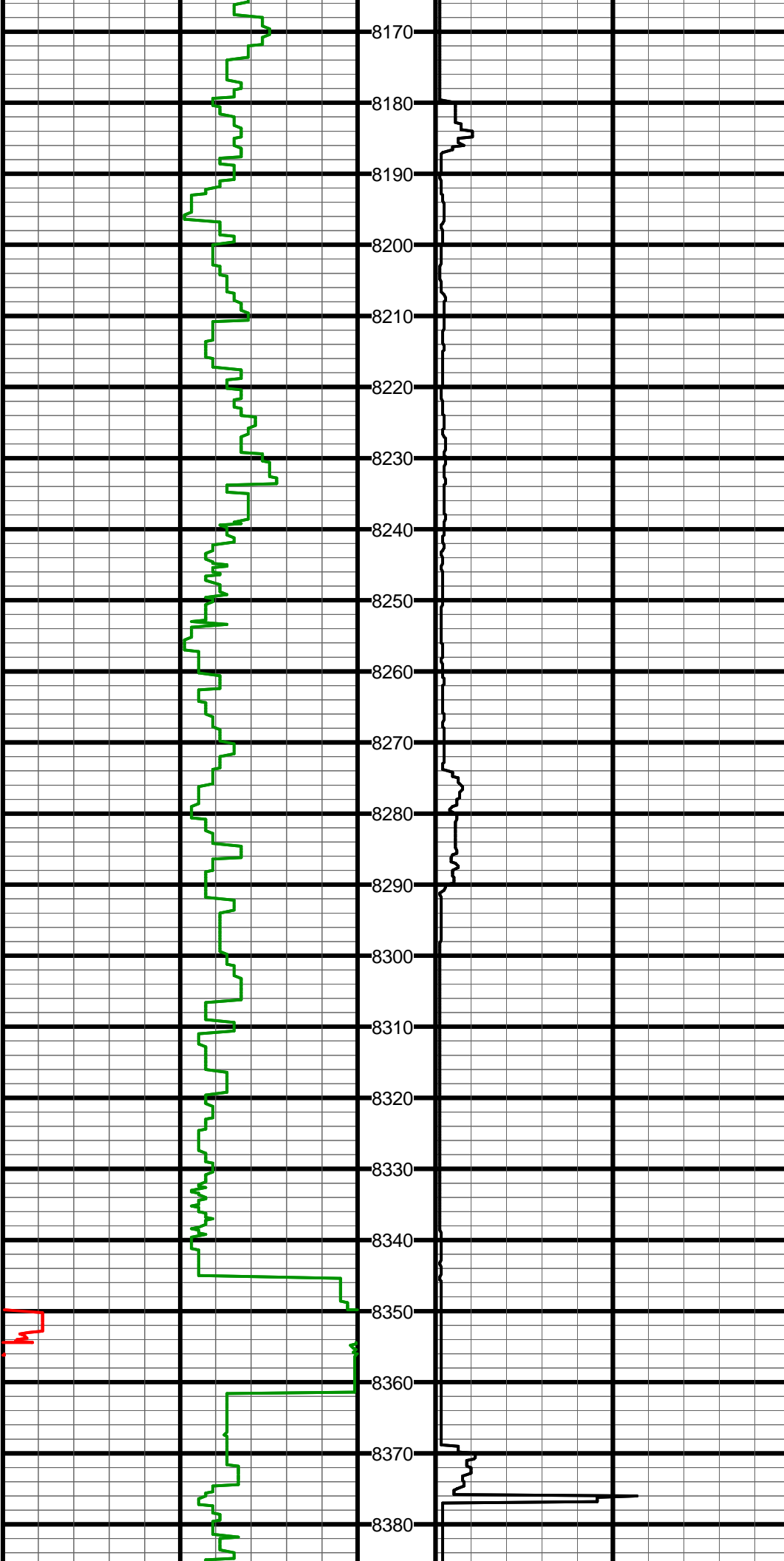
Gamma API (MD) Track: 1
API
0 150 300 450
150 300 450

#105 MD:7942.0 TVD:7587.8 I:89.6 A:1.5 VS:104.1



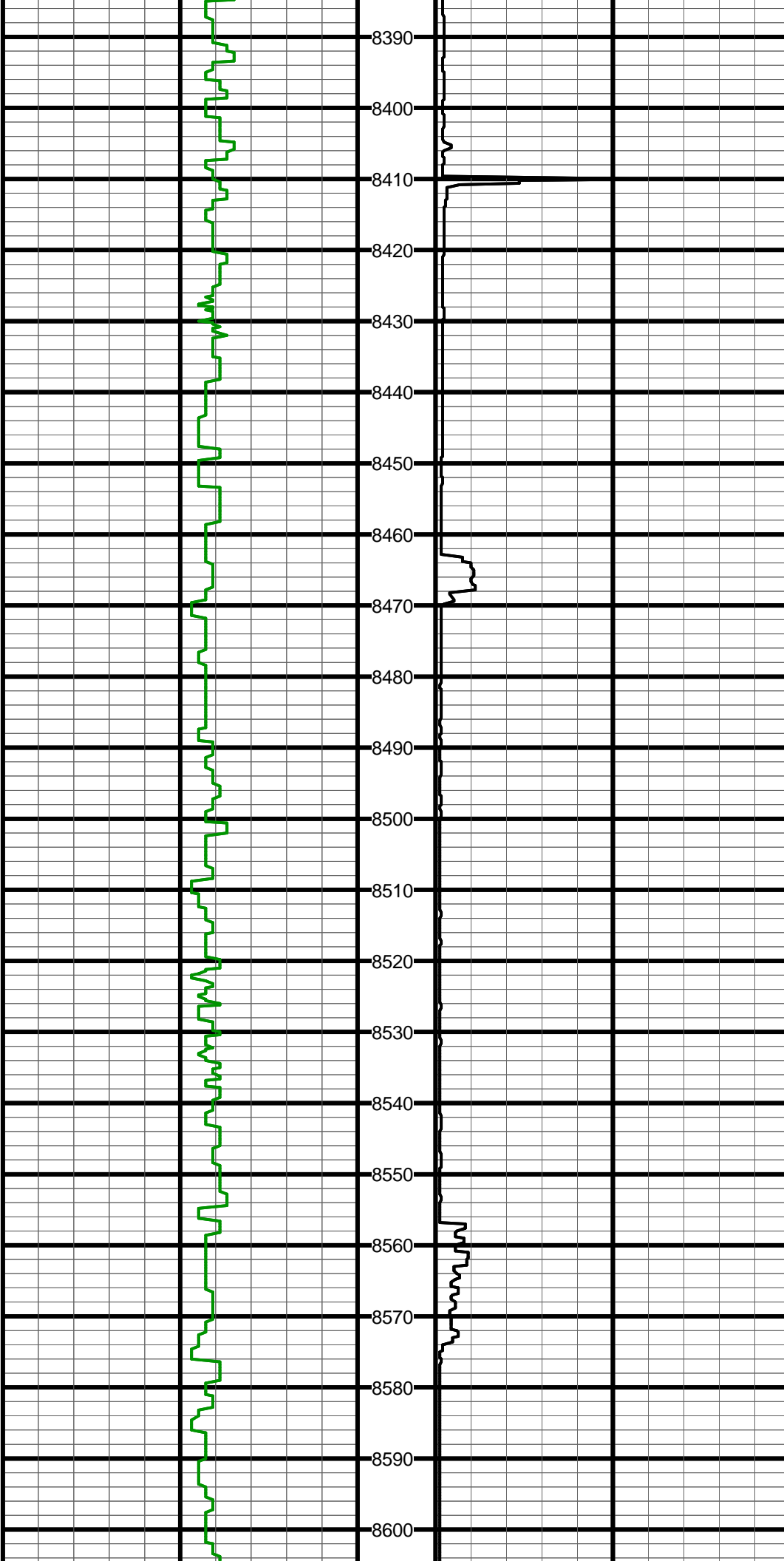
#106 MD:8036.0 TVD:7587.0 I:91.3 A:1.3 VS:198.0

#107 MD:8131.0 TVD:7583.7 I:92.7 A:1.3 VS:292.9



#108 MD:8226.0 TVD:7578.3 I:93.9 A:0.6 VS:387.8

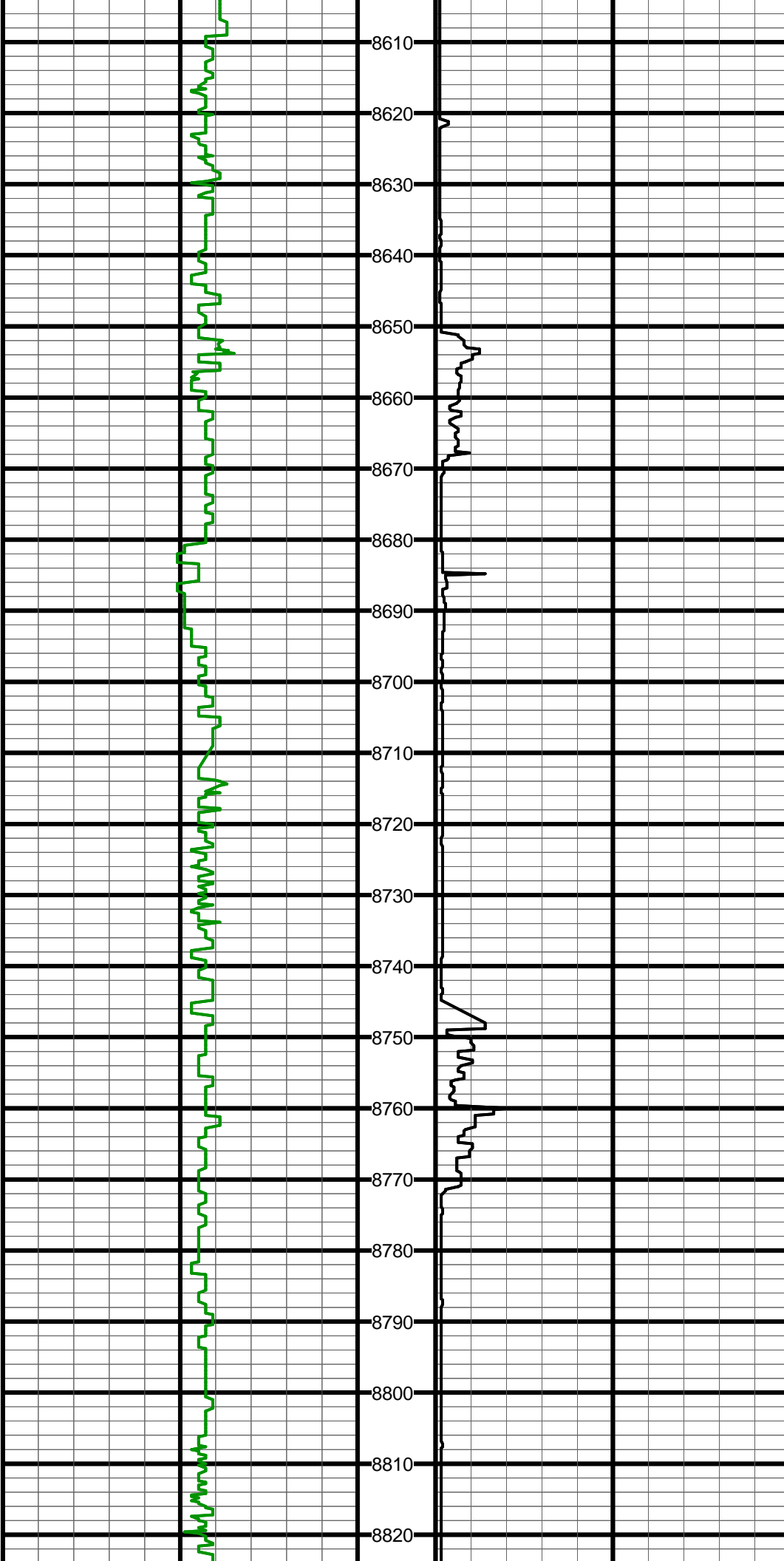
#109 MD:8320.0 TVD:7572.8 I:92.7 A:359.4 VS:481.6



#110 MD:8414.0 TVD:7570.8 I:89.8 A:357.3 VS:575.5

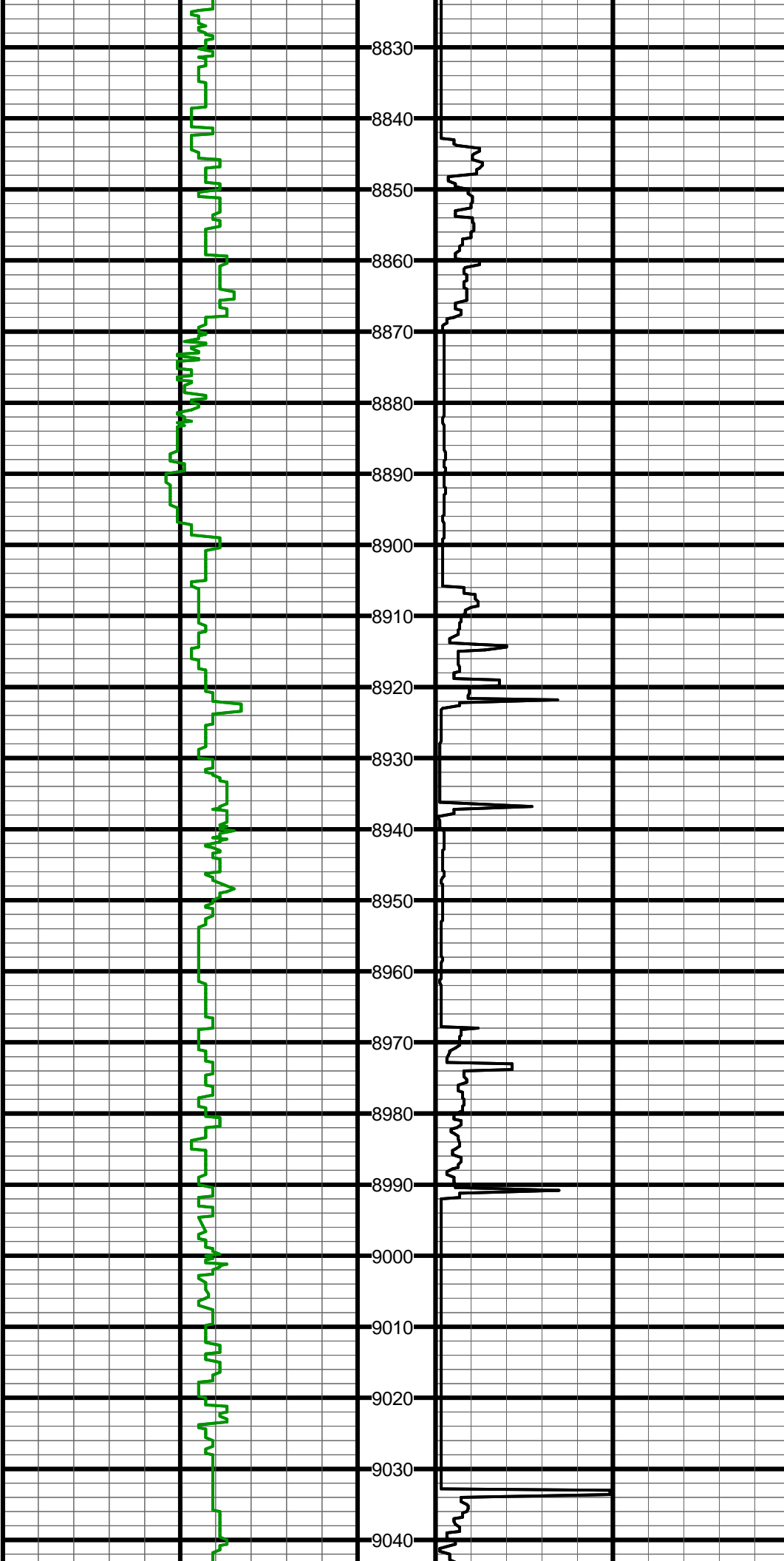
#111 MD:8509.0 TVD:7571.6 I:89.2 A:356.2 VS:670.4

#112 MD:8604.0 TVD:7571.9 I:90.5 A:357.3 VS:765.2



#113 MD:8698.0 TVD:7571.1 I:90.4 A:357.8 VS:859.1

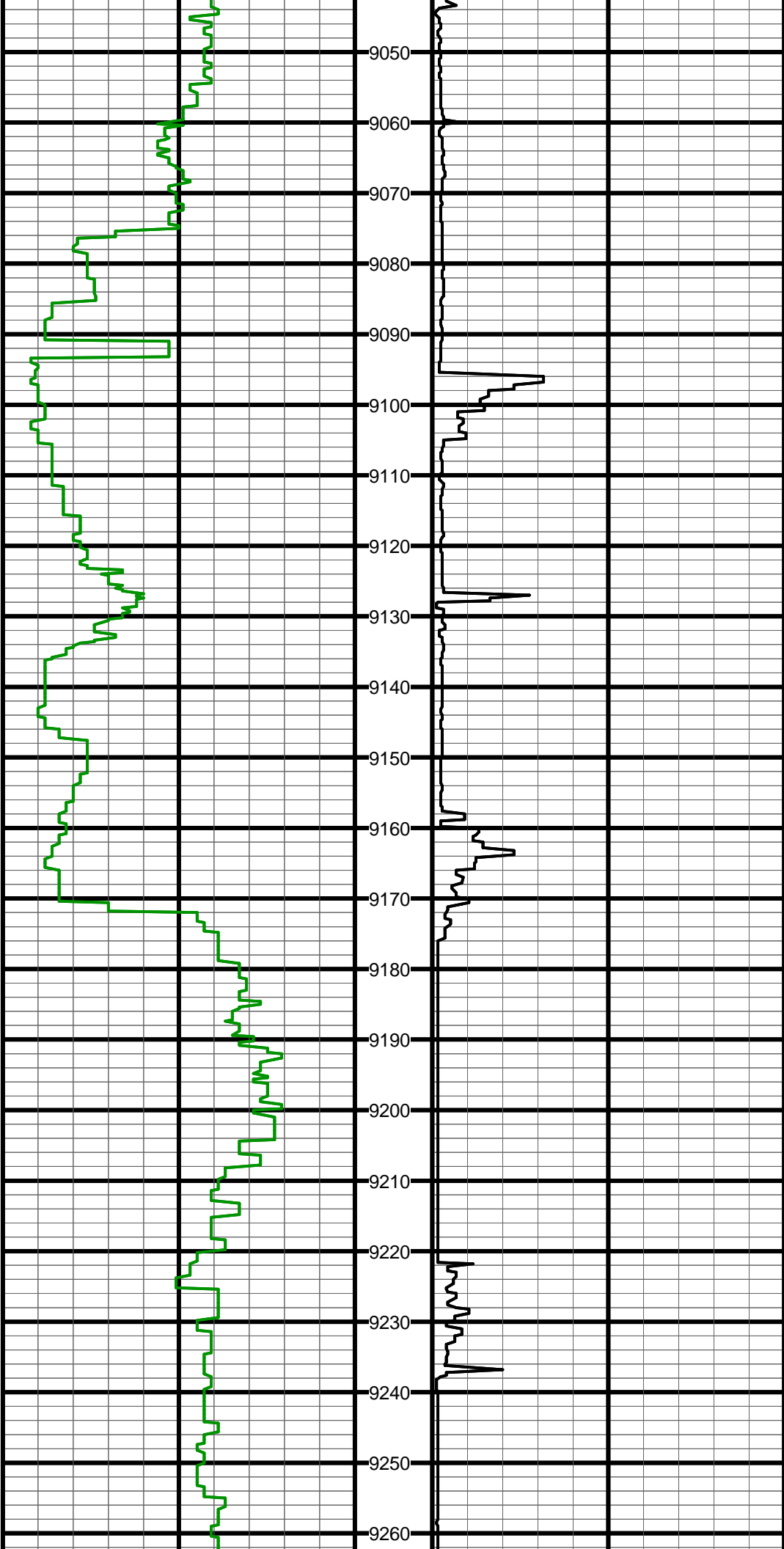
#114 MD:8793.0 TVD:7572.0 I:88.5 A:357.3 VS:954.0



#115 MD:8857.0 TVD:7573.0 I:89.8 A:358.4 VS:1018.0

#116 MD:8920.0 TVD:7574.0 I:88.4 A:358.9 VS:1080.9

#117 MD:8983.0 TVD:7574.8 I:90.2 A:0.0 VS:1143.9

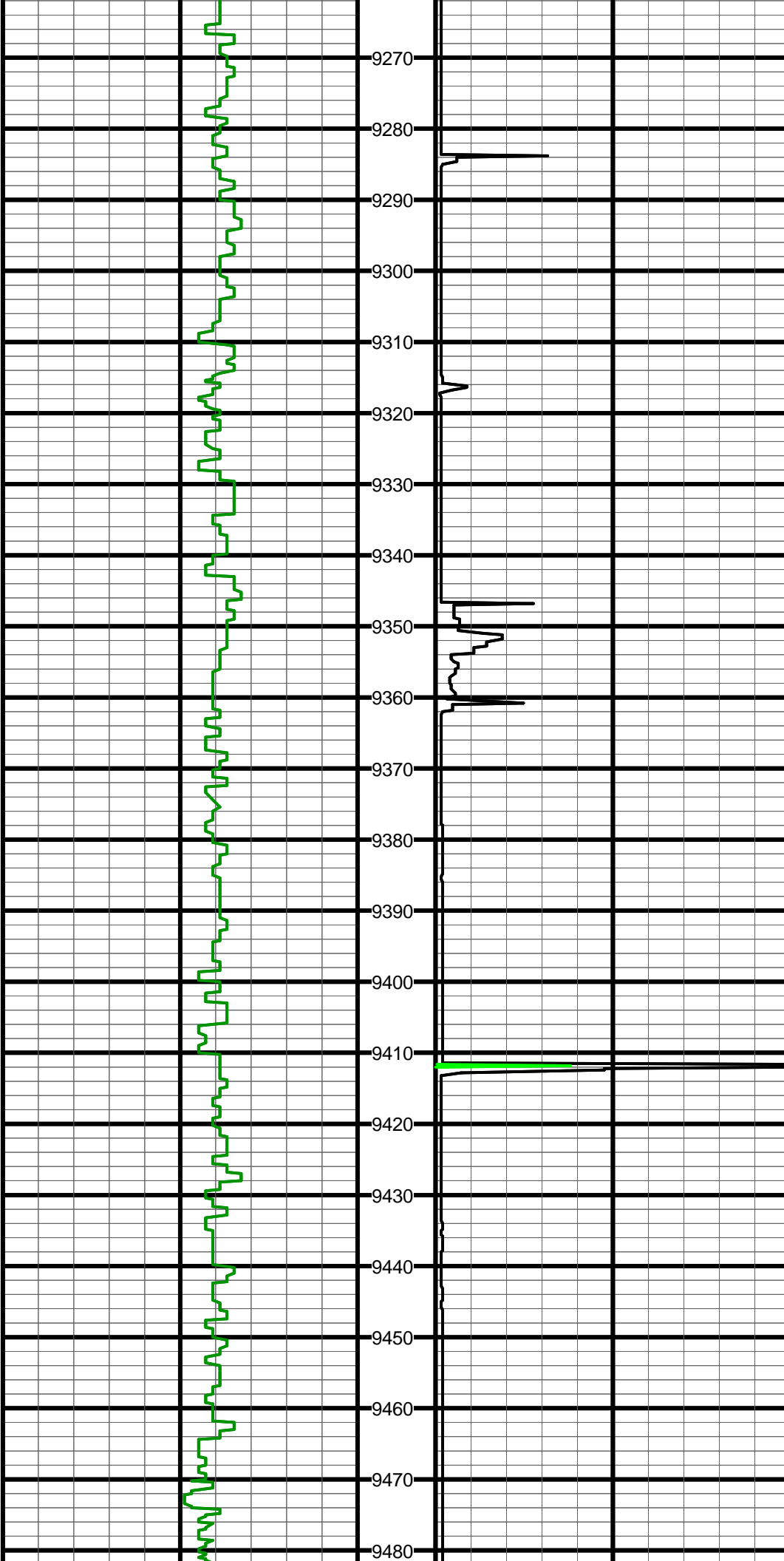


#118 MD:9046.0 TVD:7573.7 I:91.8 A:0.8 VS:1206.9

#119 MD:9109.0 TVD:7571.4 I:92.3 A:1.5 VS:1269.9

#120 MD:9173.0 TVD:7569.5 I:91.2 A:1.8 VS:1333.8

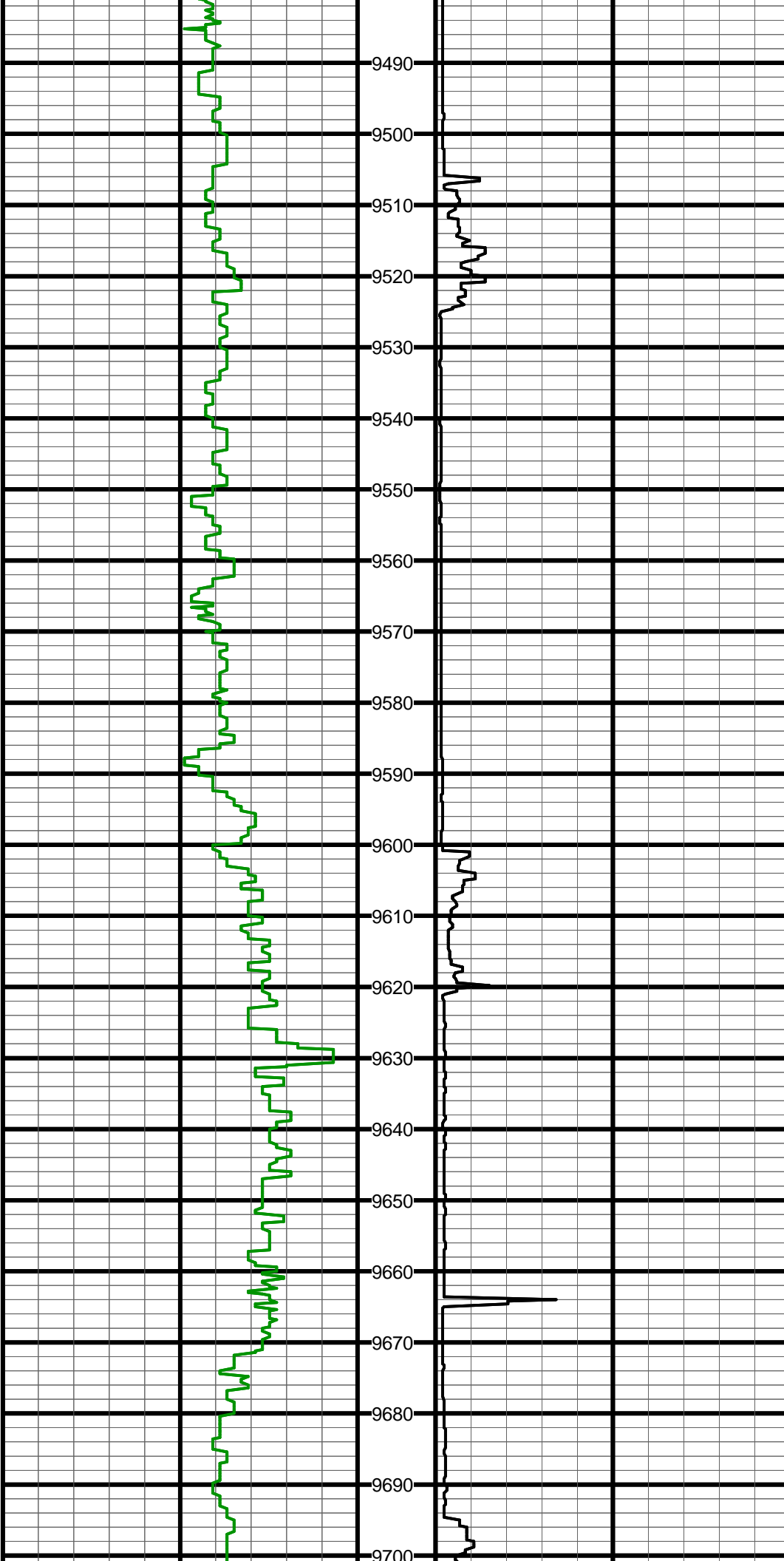
#121 MD:9236.0 TVD:7569.0 I:89.7 A:2.0 VS:1396.8



#122 MD:9299.0 TVD:7569.1 I:90.0 A:1.9 VS:1459.7

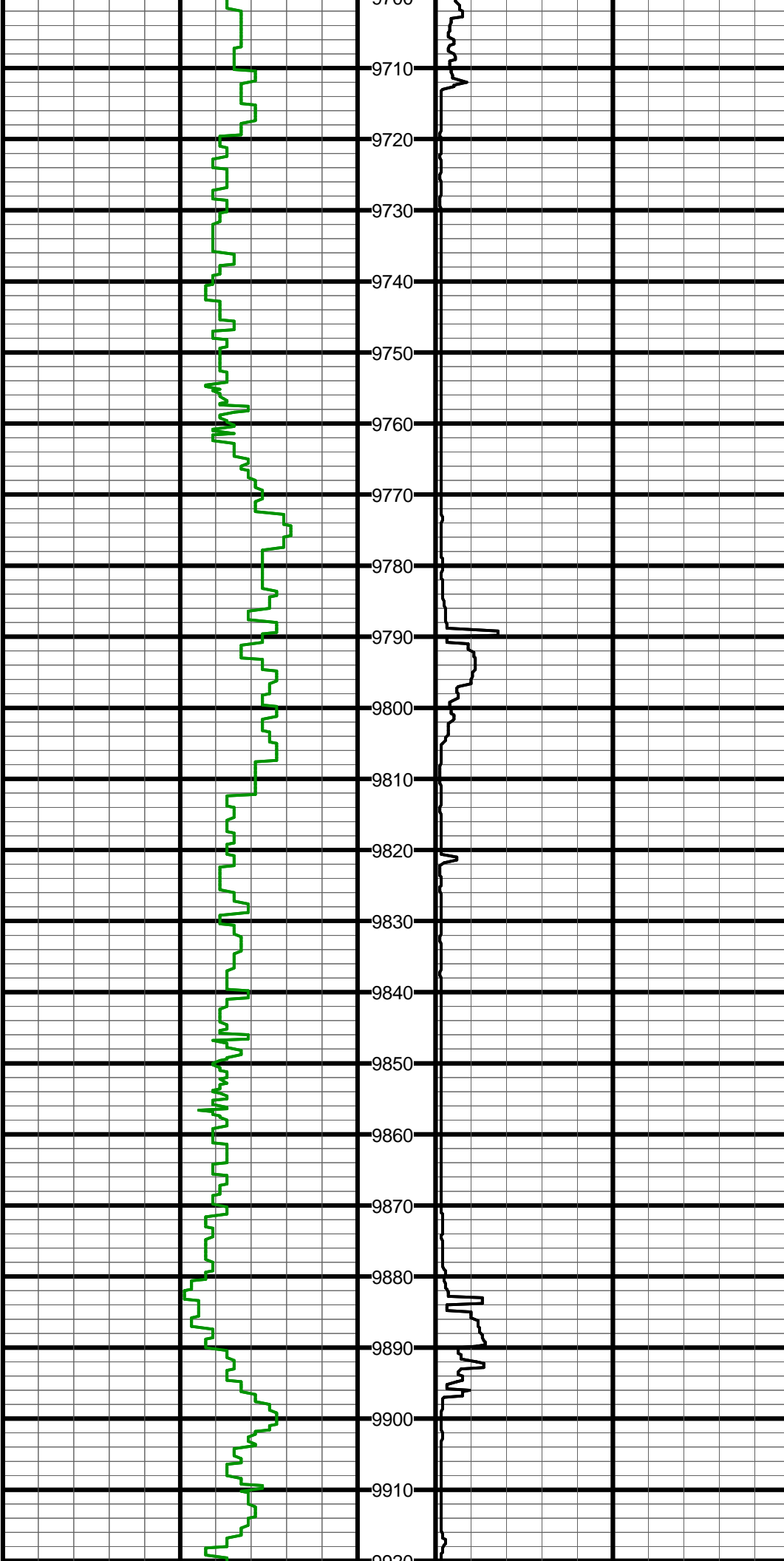
#123 MD:9362.0 TVD:7569.9 I:88.6 A:2.0 VS:1522.7

#124 MD:9457.0 TVD:7572.3 I:88.5 A:0.0 VS:1617.6



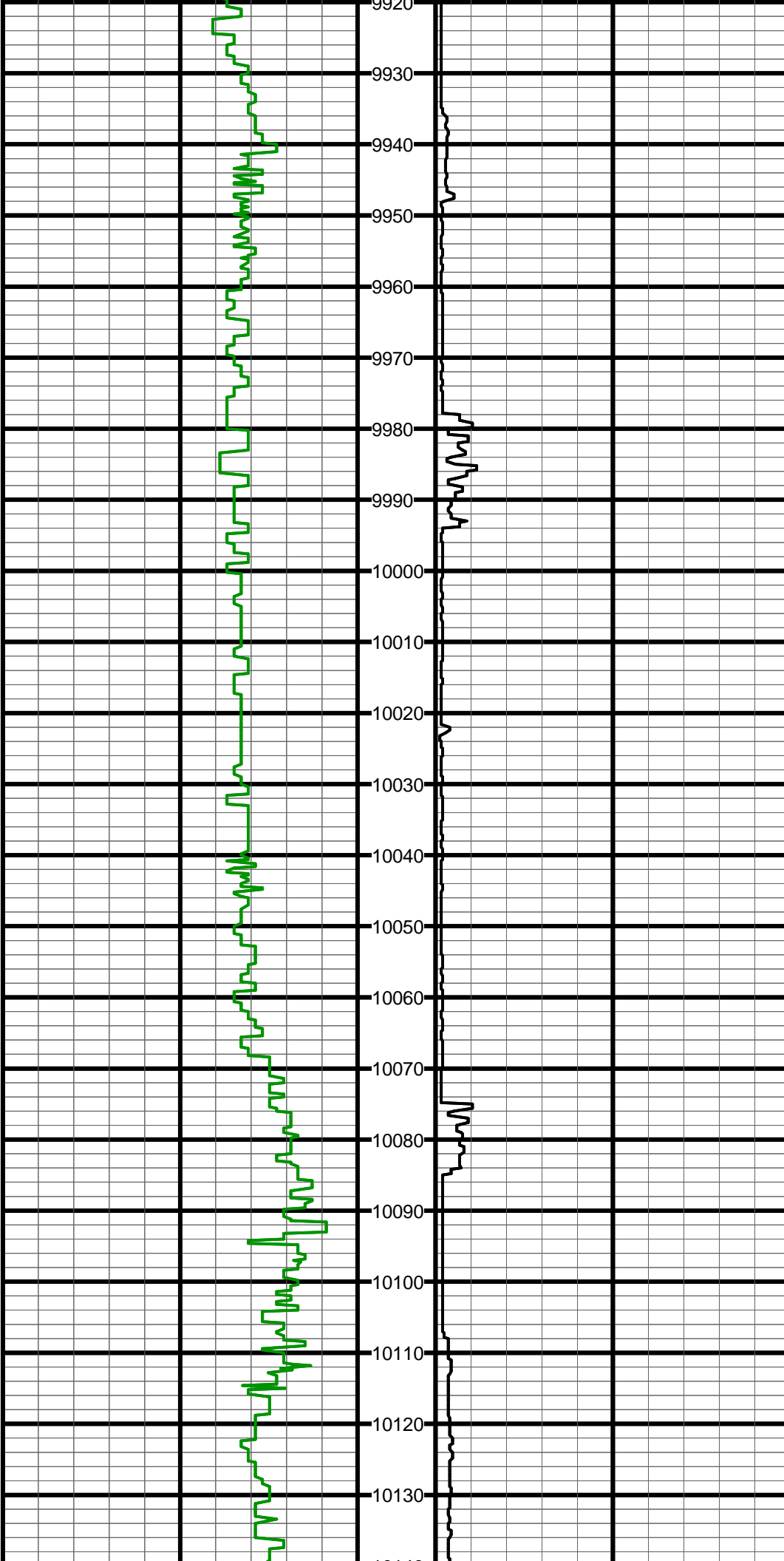
#125 MD:9552.0 TVD:7574.8 I:88.5 A:1.1 VS:1712.6

#126 MD:9646.0 TVD:7575.3 I:90.9 A:2.1 VS:1806.6



#127 MD:9741.0 TVD:7574.1 I:90.5 A:3.0 VS:1901.5

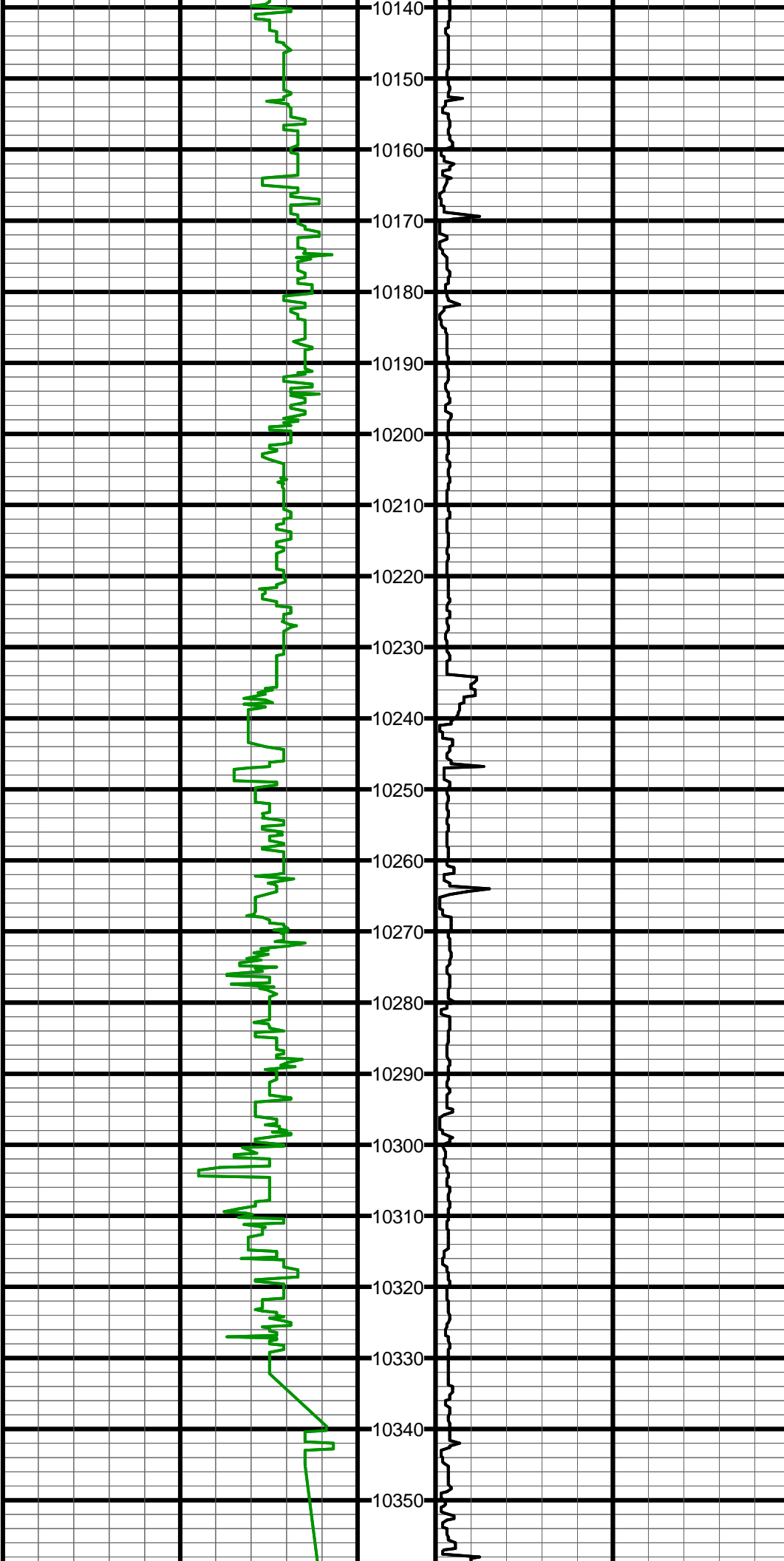
#128 MD:9836.0 TVD:7573.9 I:89.8 A:2.9 VS:1996.3



#129 MD:9930.0 TVD:7574.6 I:89.3 A:1.7 VS:2090.3

#130 MD:10025.0 TVD:7576.1 I:88.9 A:359.3 VS:2185.2

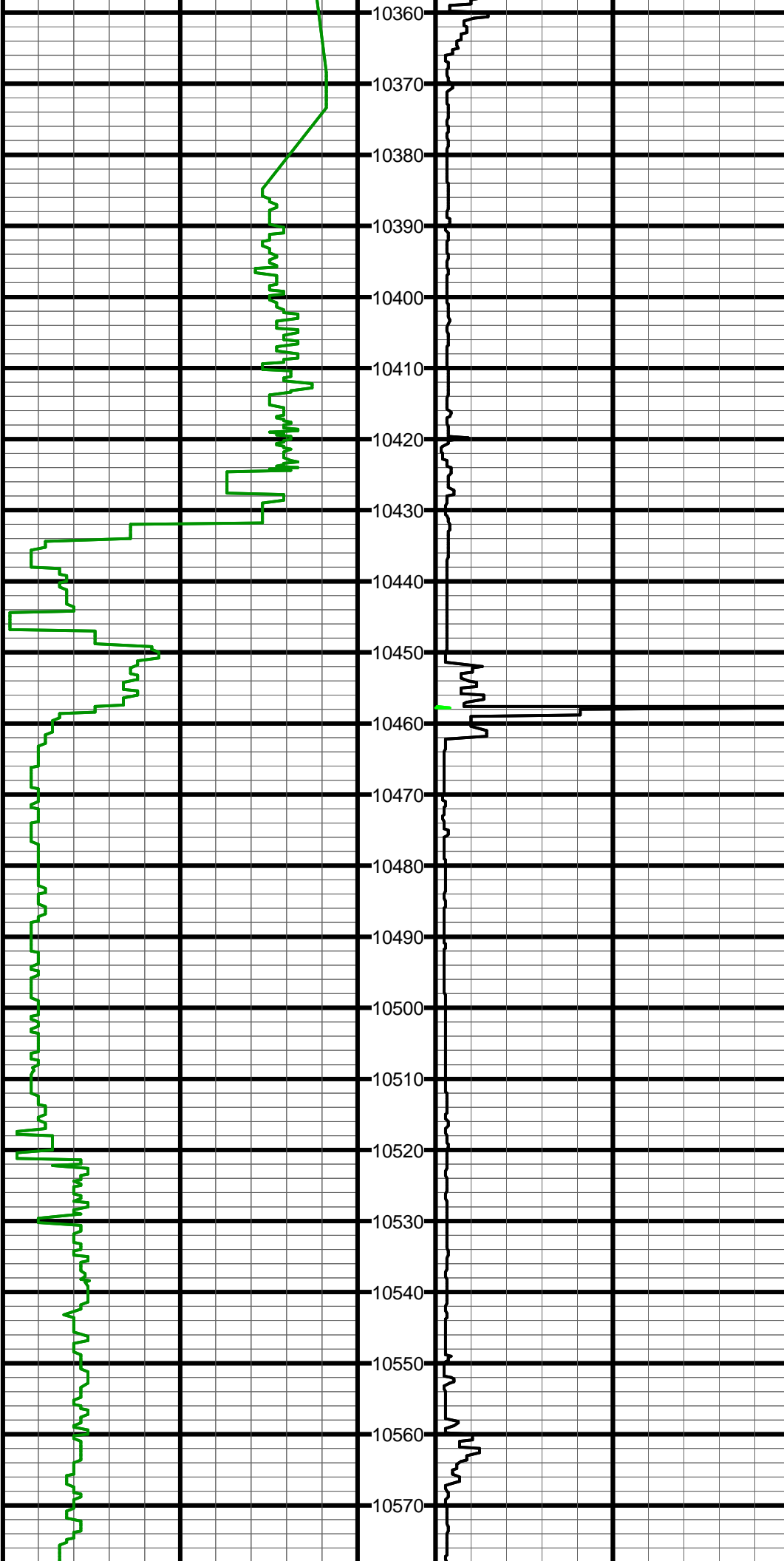
#131 MD:10120.0 TVD:7578.1 I:88.7 A:0.6 VS:2280.2



#132 MD:10183.0 TVD:7579.4 I:88.9 A:0.2 VS:2343.2

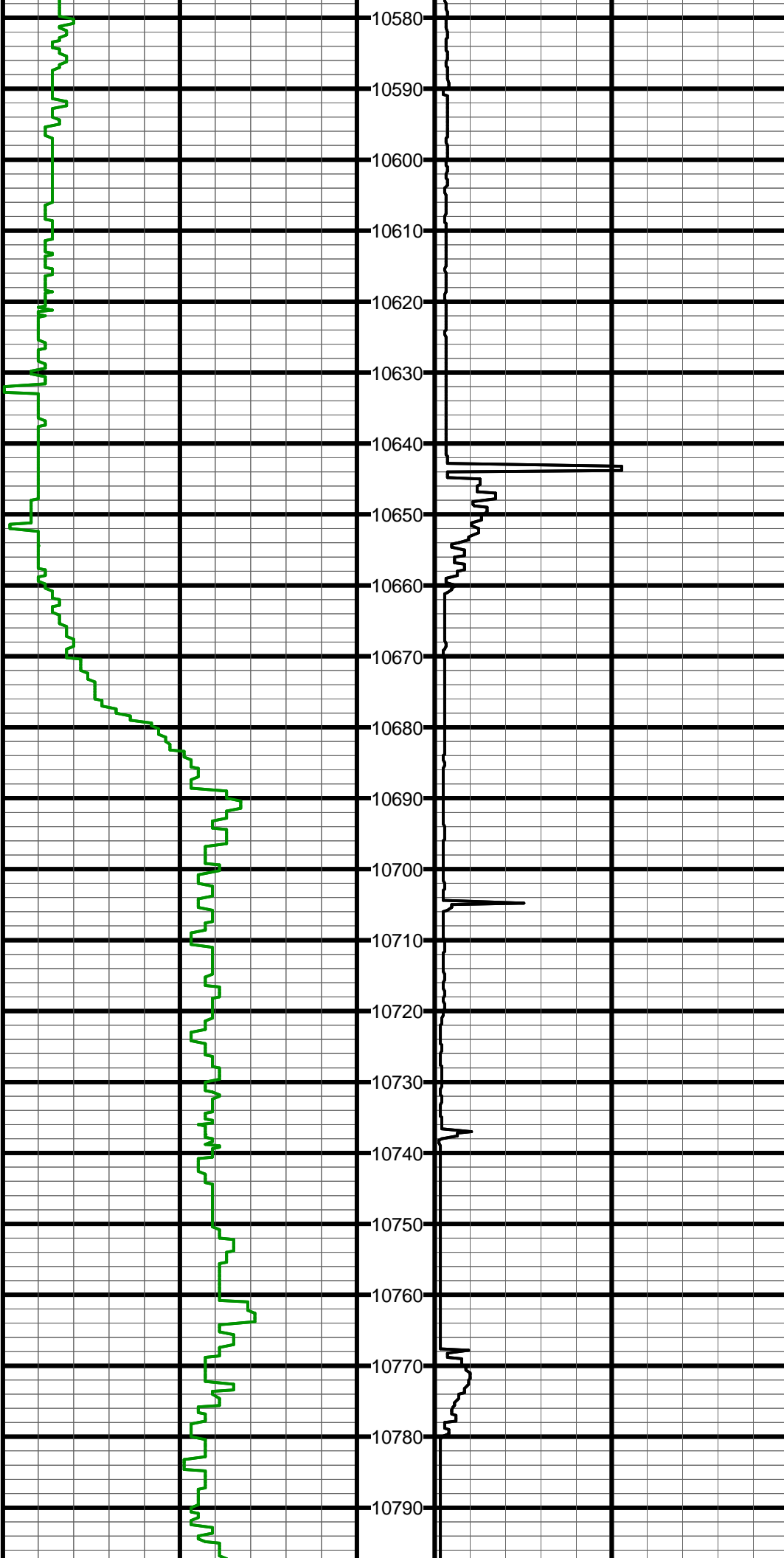
#133 MD:10246.0 TVD:7580.1 I:89.8 A:0.4 VS:2406.2

#134 MD:10310.0 TVD:7580.6 I:89.3 A:359.8 VS:2470.2



#135 MD:10404.0 TVD:7581.7 I:89.4 A:0.4 VS:2564.2

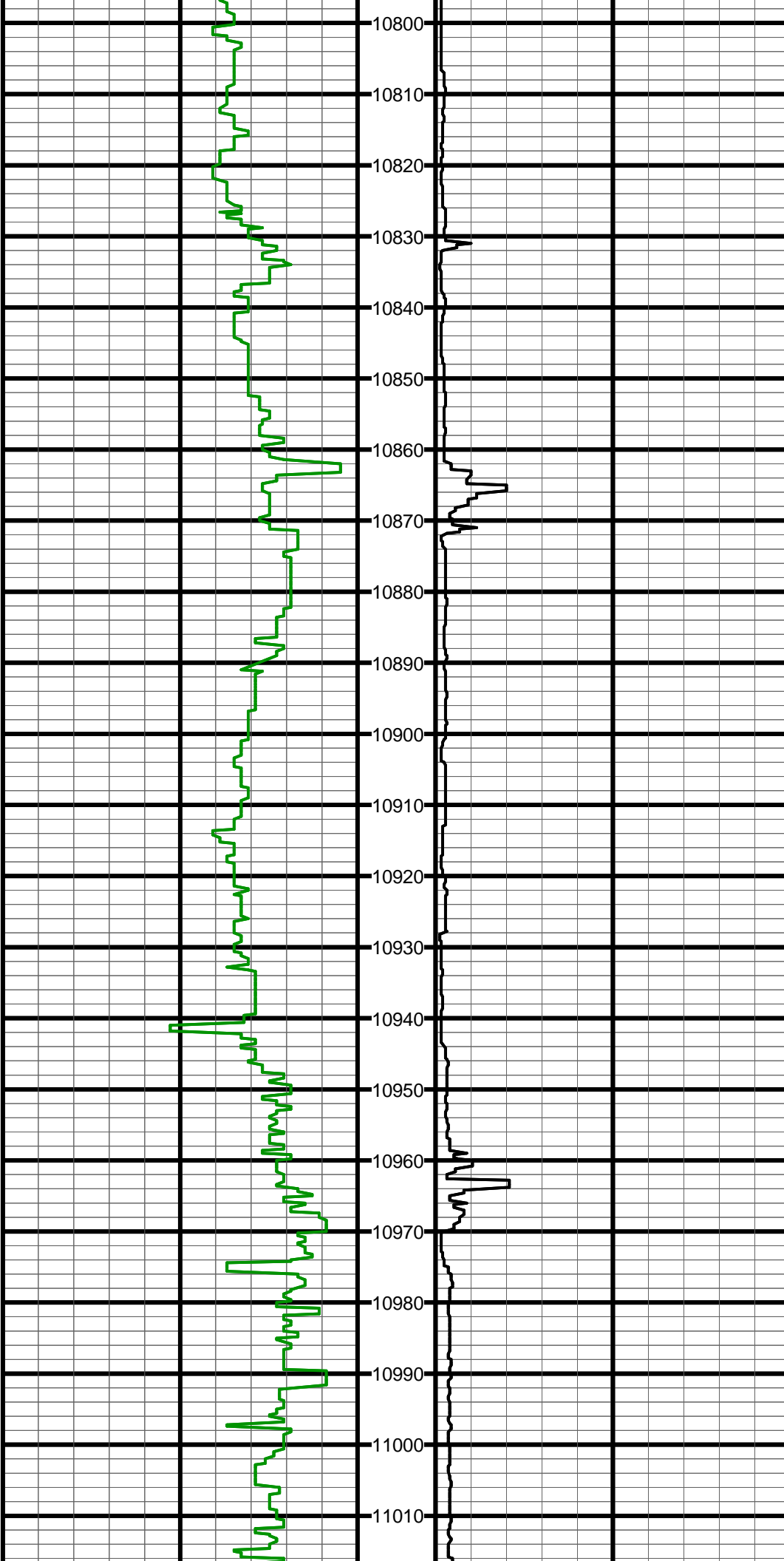
#136 MD:10499.0 TVD:7582.6 I:89.5 A:0.1 VS:2659.2



#137 MD:10593.0 TVD:7582.8 I:90.2 A:359.1 VS:2753.2

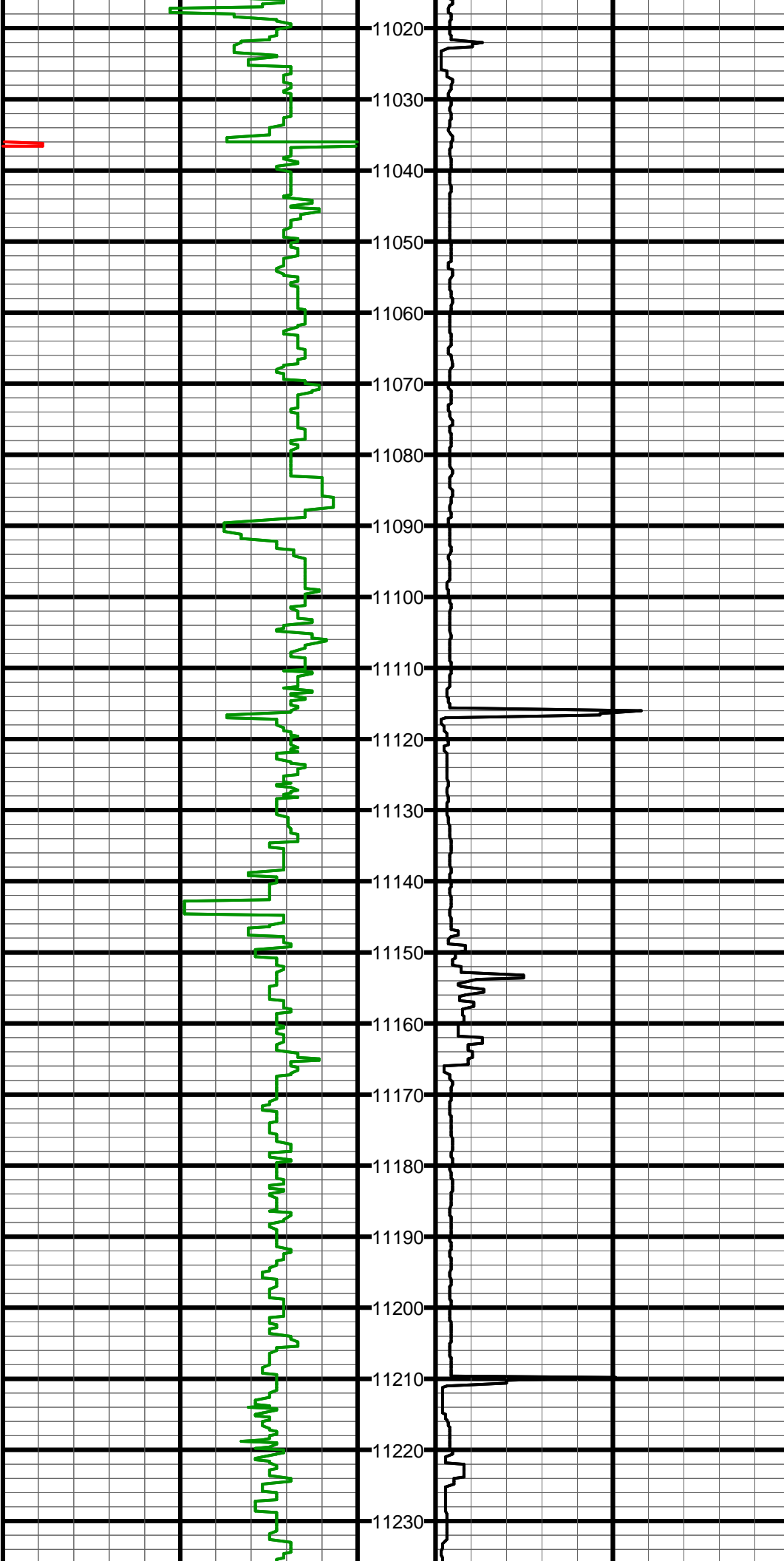
#138 MD:10688.0 TVD:7584.2 I:88.2 A:359.0 VS:2848.1

#139 MD:10783.0 TVD:7587.1 I:88.3 A:359.5 VS:2943.1



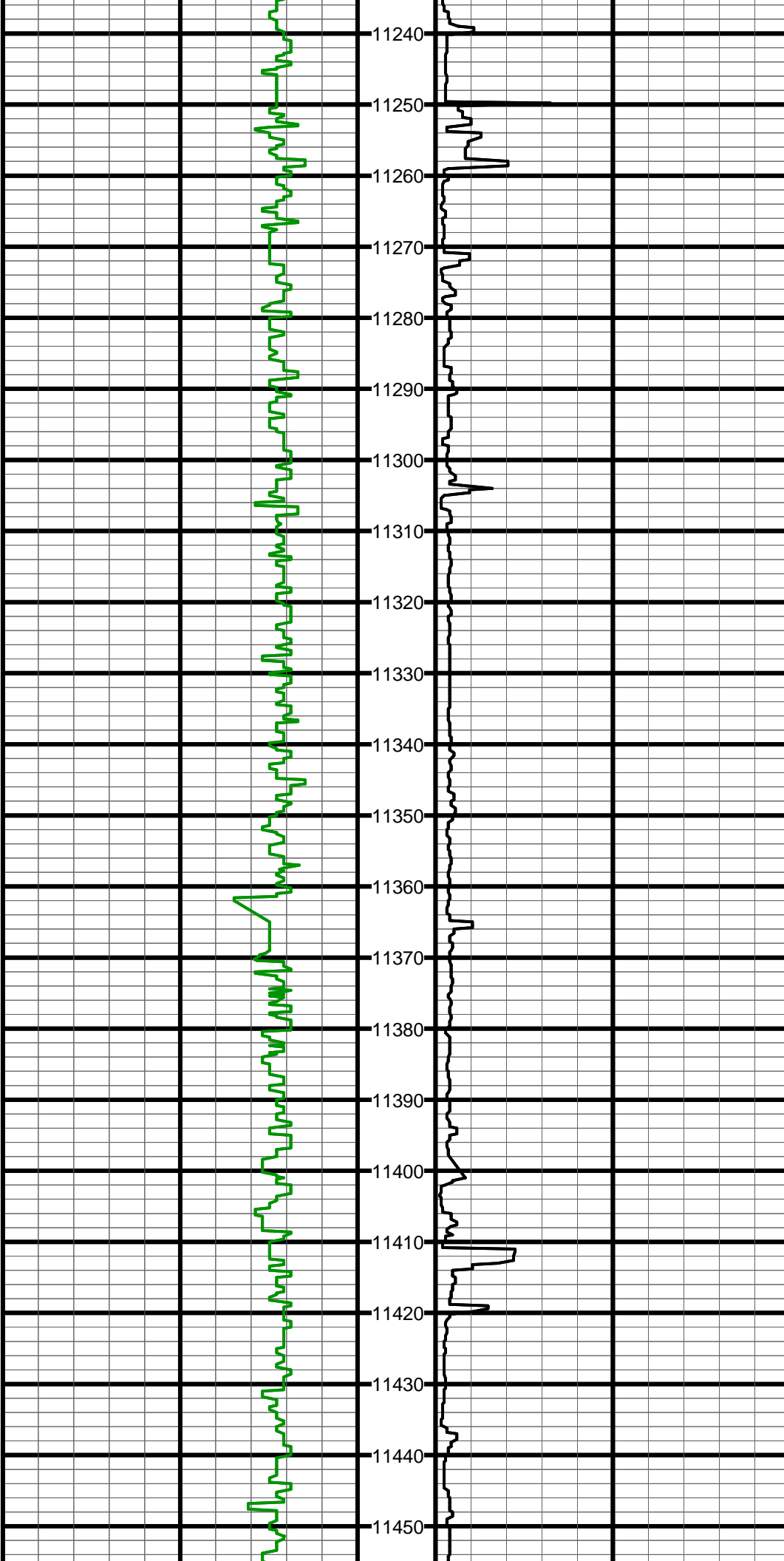
#140 MD:10877.0 TVD:7589.8 I:88.4 A:359.7 VS:3037.0

#141 MD:10972.0 TVD:7592.6 I:88.2 A:0.2 VS:3132.0



#142 MD:11067.0 TVD:7595.5 I:88.3 A:359.2 VS:3227.0

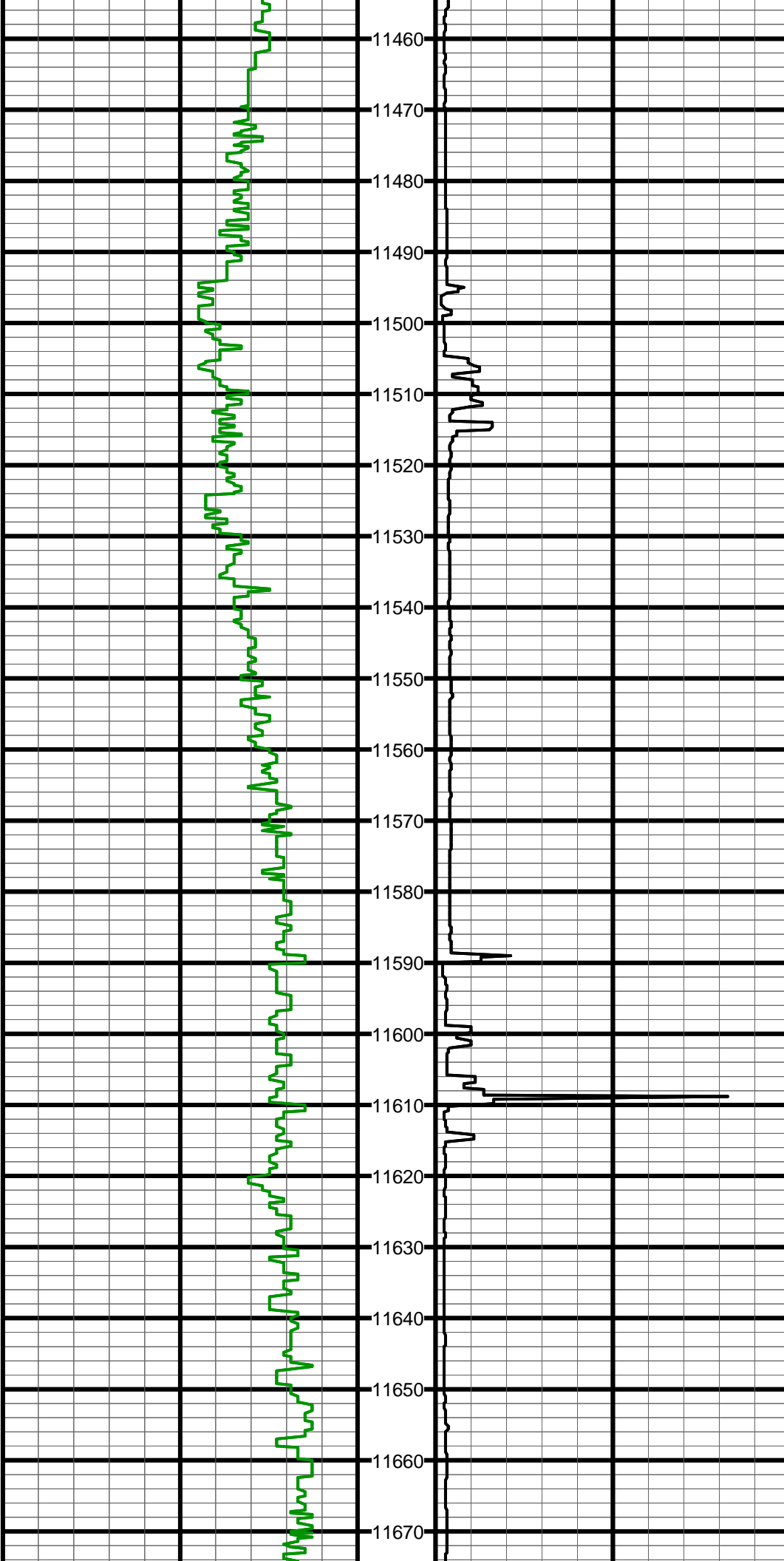
#143 MD:11162.0 TVD:7598.0 I:88.7 A:359.3 VS:3321.9



#144 MD:11256.0 TVD:7599.4 I:89.6 A:359.3 VS:3415.9

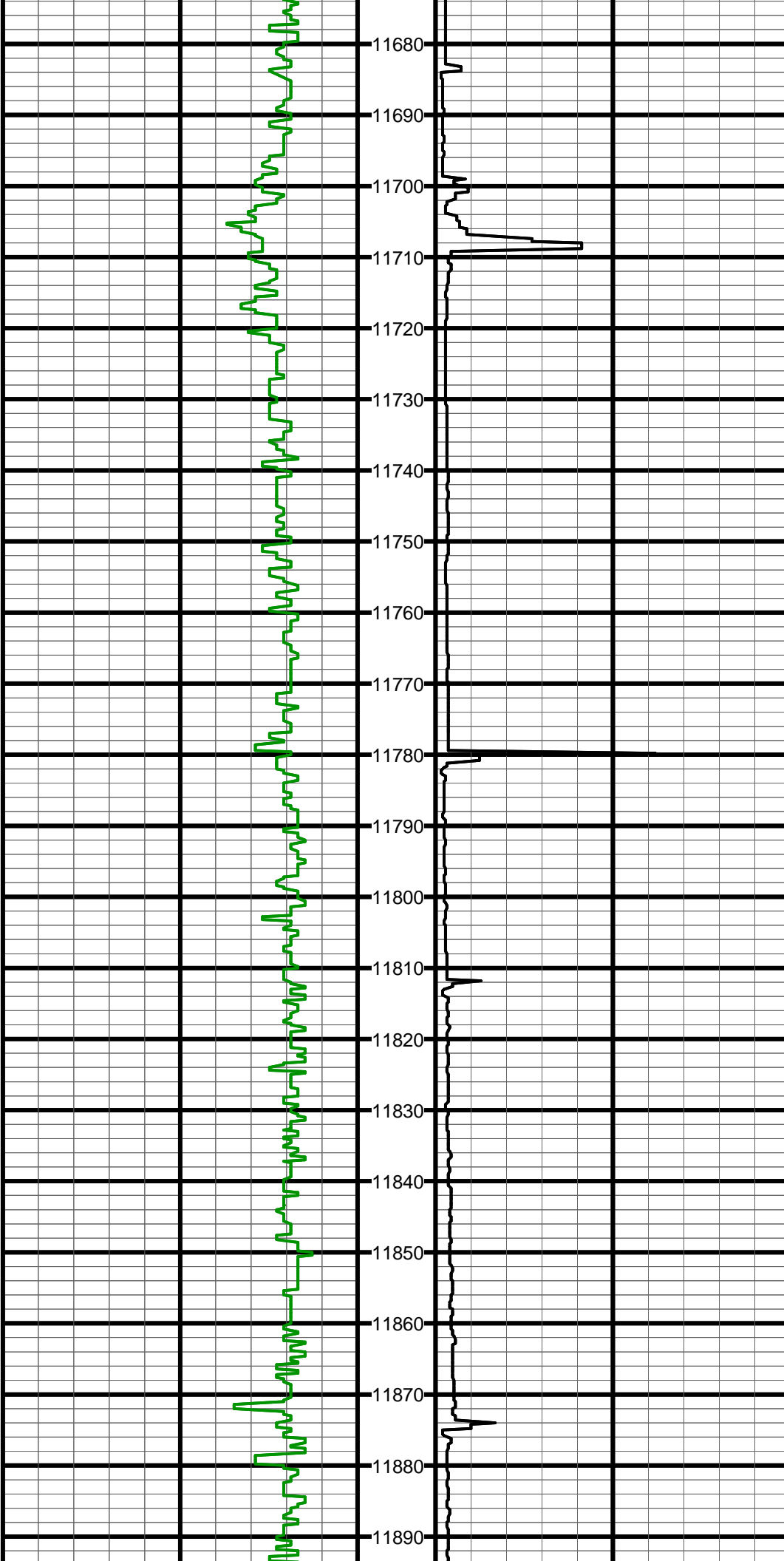
#145 MD:11351.0 TVD:7599.9 I:89.8 A:358.6 VS:3510.9

#146 MD:11446.0 TVD:7599.9 I:90.2 A:358.6 VS:3605.8



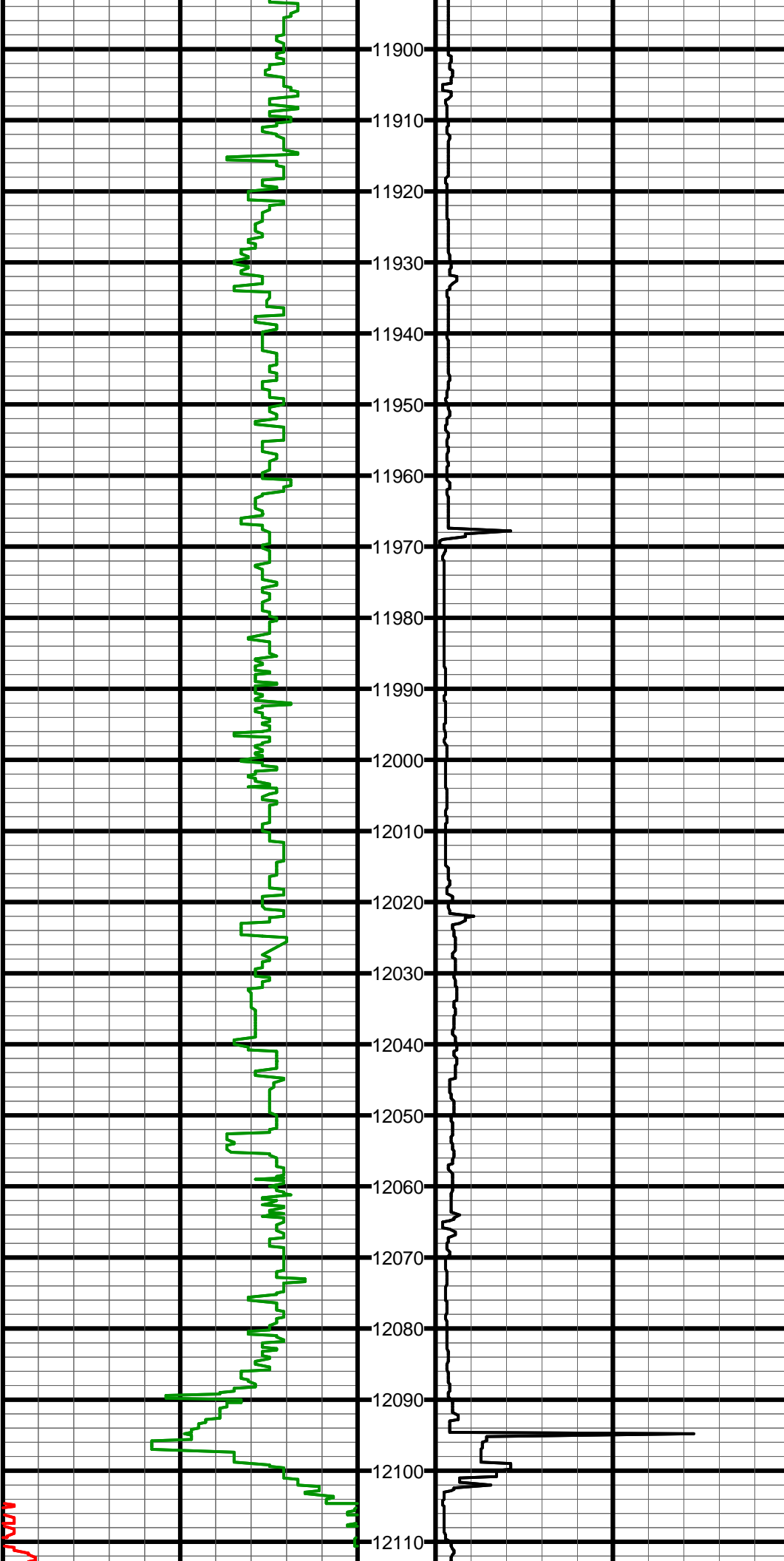
#147 MD:11541.0 TVD:7598.1 I:91.9 A:1.1 VS:3700.8

#148 MD:11635.0 TVD:7595.1 I:91.8 A:1.3 VS:3794.8



#149 MD:11730.0 TVD:7593.2 I:90.5 A:1.1 VS:3889.7

#150 MD:11824.0 TVD:7592.7 I:90.1 A:0.5 VS:3983.7



#151 MD:11919.0 TVD:7593.0 I:89.6 A:0.3 VS:4078.7

#152 MD:12014.0 TVD:7593.3 I:90.0 A:0.6 VS:4173.7

#153 MD:12109.0 TVD:7593.0 I:90.4 A:359.9 VS:4268.7

