



Digital Drilling Data
Systems, LLC

MD Build

(Scale: 5":100' (10'))

Company: Cathedral Energy Services

State: CO

Well: Mathwes 4F-14H

County: Weld

Field: DJ

Country: US

Well ID: 051233684000

Job Number: 135269

Location: Weld

Elev KB: 5117
Elev DF: 5117
Elev GL: 5104

Operator 1: Encana Oil & Gas

Operator 2: Andrew Stewart

Comment 1:

Comment 2:

Comment 3:

Comment 4:

Comment 5:

Hole Data

Casing Record

Size	From	To	Size	From	To
12.25	0	1414	9.625	0	1406
8.75	1414	7920			

Tool Run Data

Tool S/N	Run #1	Run #2	Run #3	Run #4	Run #5
Cal Factor	1061	1061			
Gamma Offset	4.15	4.15			
Gamma Offset	38.92	38.92			
Start Depth	5000	7281			
Start Date	7/3/2013	7/6/2013			
Start Time	0300	2100			
End Depth	7281	7920			
End Date	7/6/2013	7/8/2013			
End Time	2000	0900			

Gamma API (MD) Track: 1
API

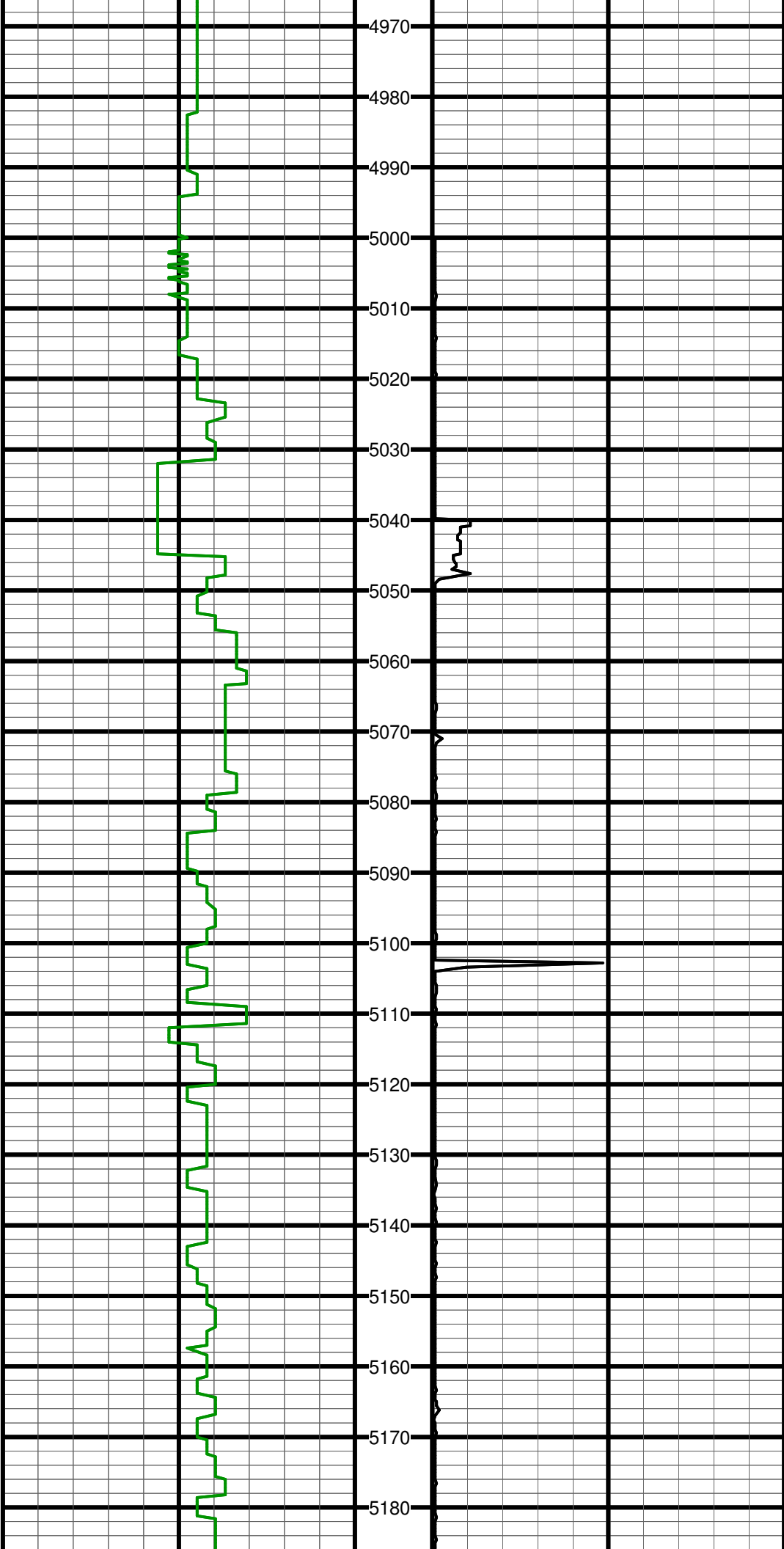


ROP (MD) Track: 1
Min/Ft



Depth
5":100' (10')

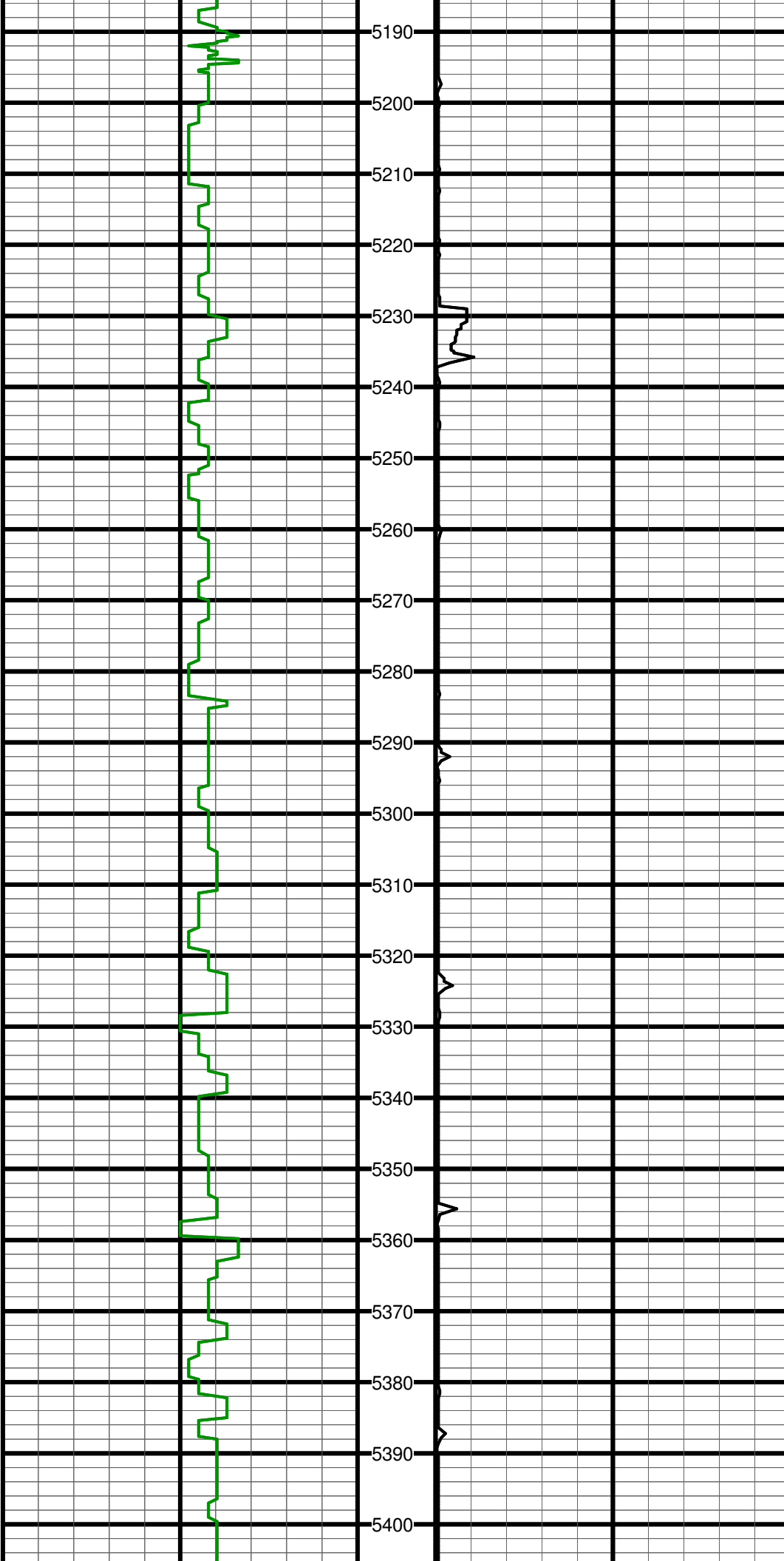
4900
4910
4920
4930
4940
4950
4960



#53 MD:4987.0 TVD:4948.5 I:0.8 A:216.6 VS:-444.7

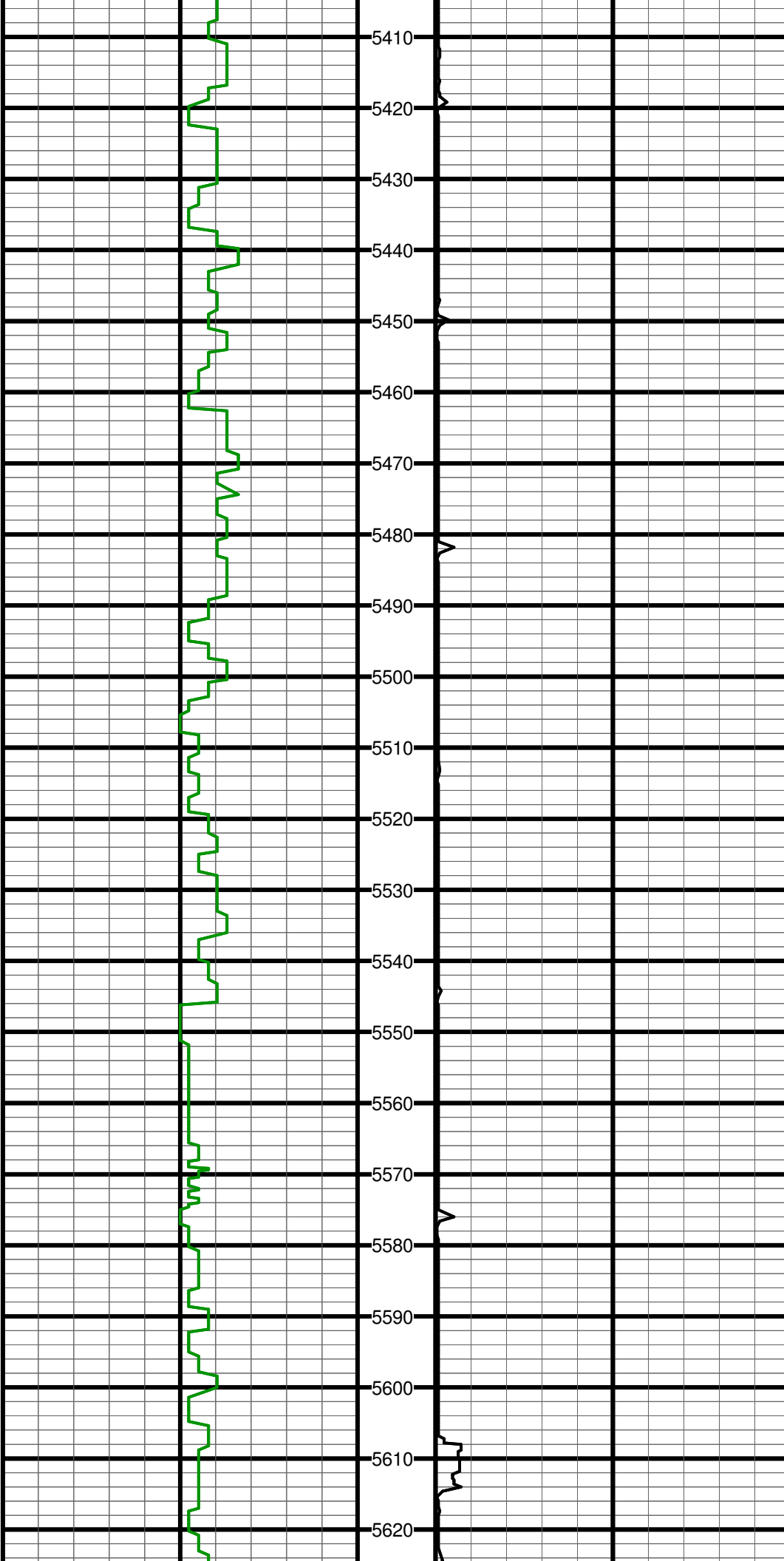
#54 MD:5082.0 TVD:5043.5 I:1.1 A:124.7 VS:-445.8

#55 MD:5176.0 TVD:5137.5 I:1.1 A:118.3 VS:-446.7



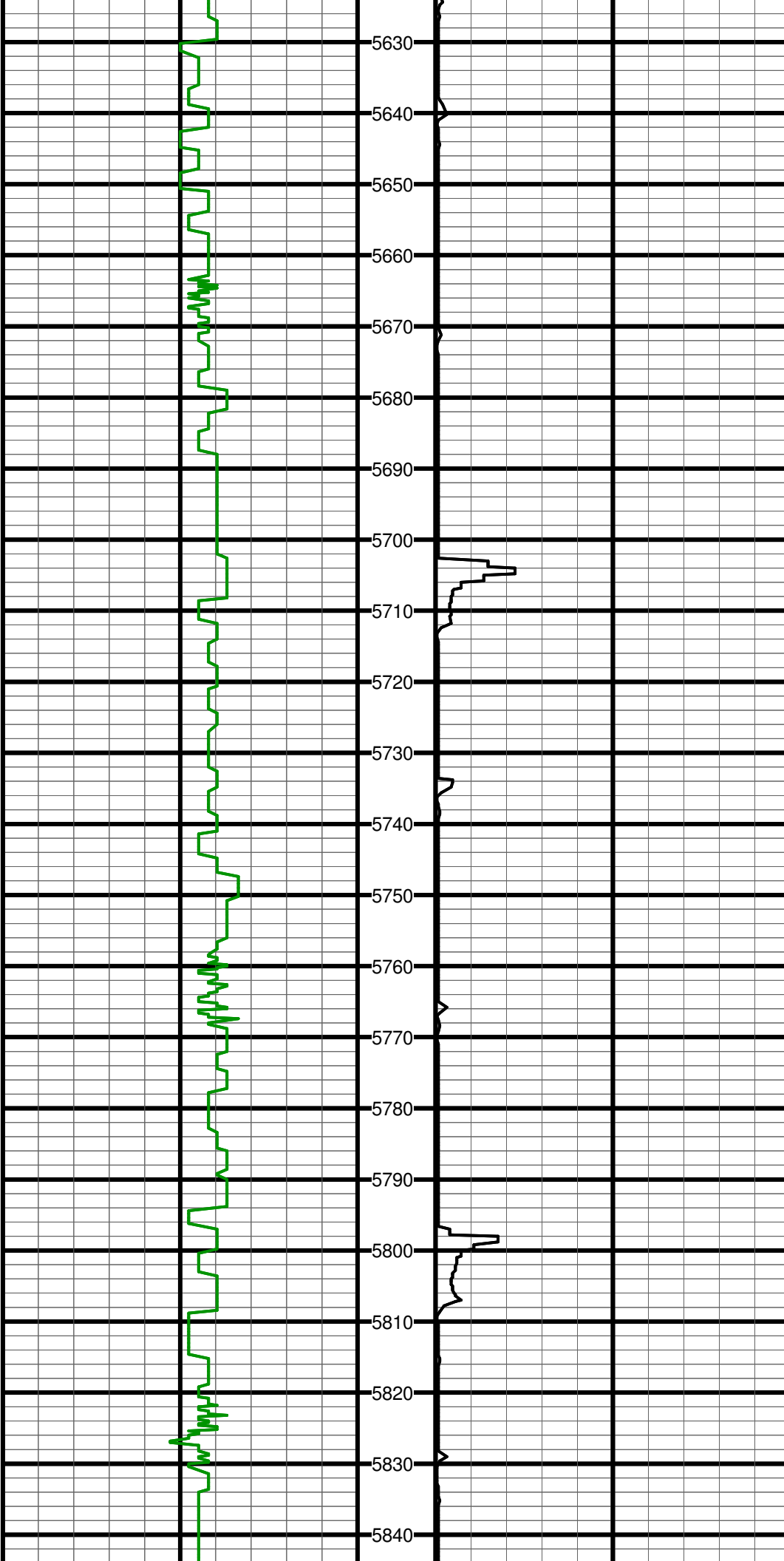
#56 MD:5271.0 TVD:5232.5 I:0.7 A:289.6 VS:-447.0

#57 MD:5366.0 TVD:5327.5 I:0.6 A:291.3 VS:-446.6



#58 MD:5460.0 TVD:5421.5 I:0.4 A:243.1 VS:-446.6

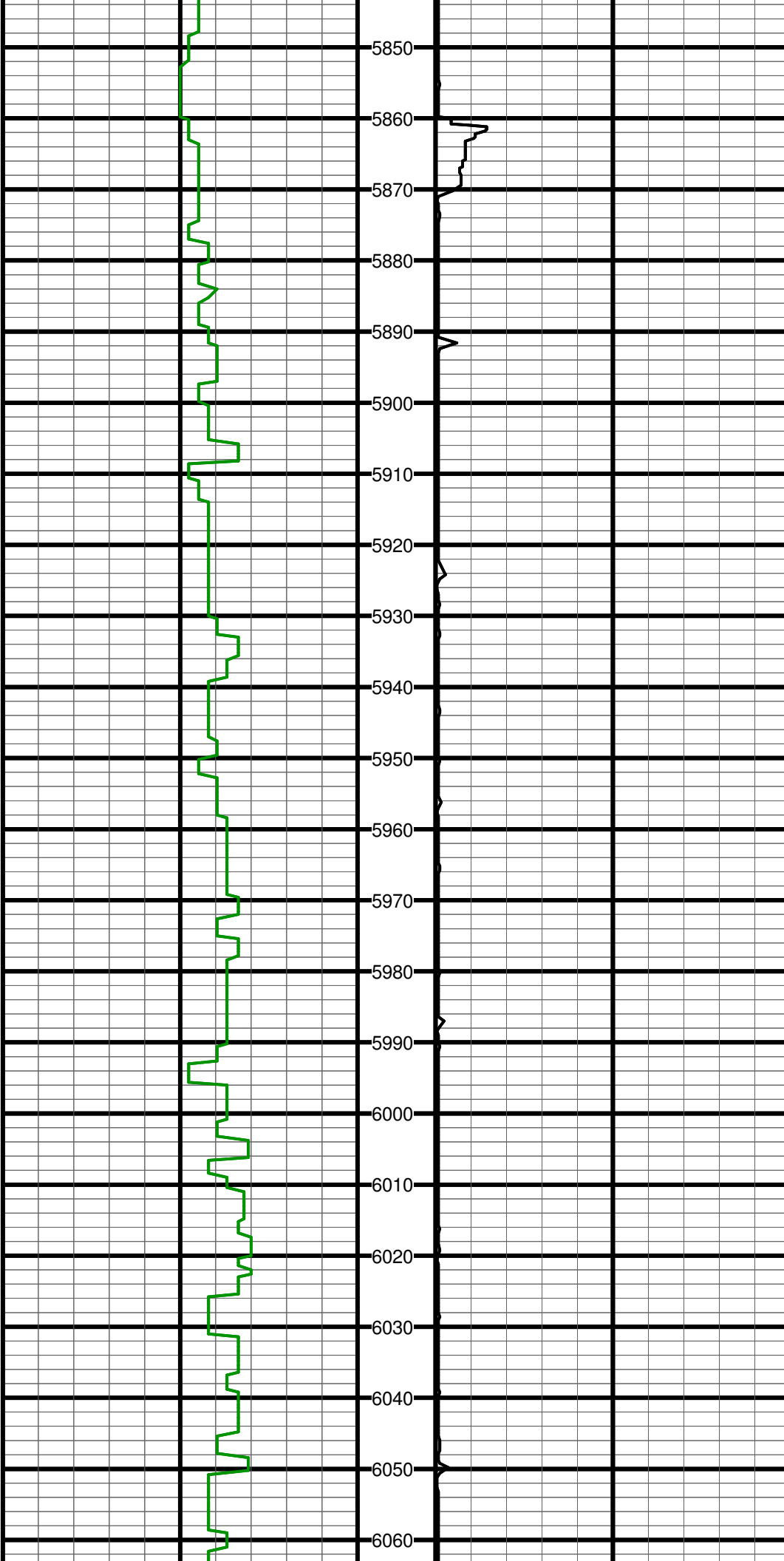
#59 MD:5555.0 TVD:5516.5 I:0.8 A:152.6 VS:-447.3



#60 MD:5650.0 TVD:5611.5 I:1.1 A:335.7 VS:-447.1

#61 MD:5745.0 TVD:5706.4 I:2.4 A:36.4 VS:-444.6

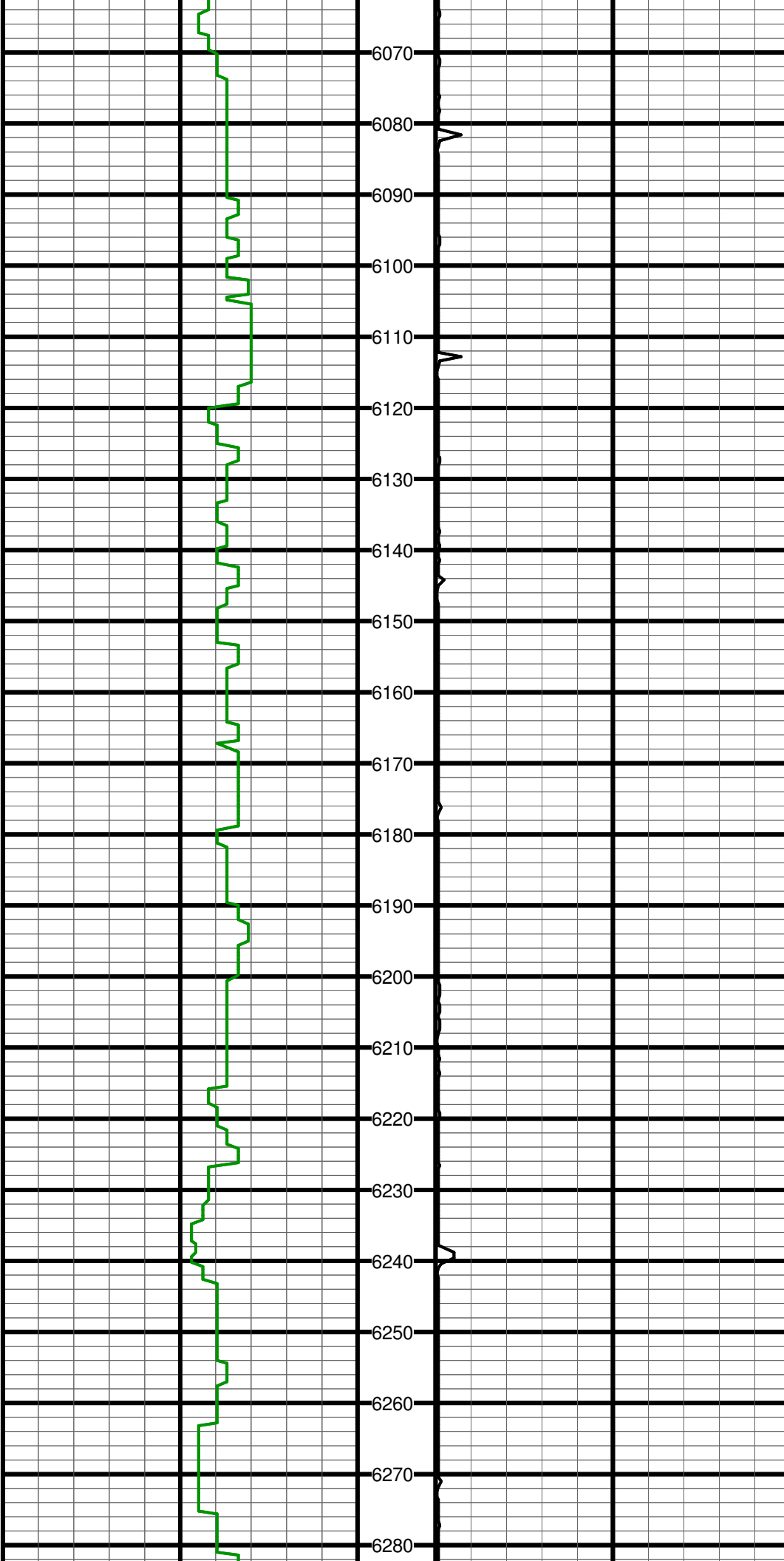
#62 MD:5808.0 TVD:5769.4 I:1.3 A:30.6 VS:-443.0



#63 MD:5871.0 TVD:5832.4 I:0.9 A:177.7 VS:-442.8

#64 MD:5934.0 TVD:5895.4 I:0.8 A:181.8 VS:-443.8

#65 MD:6029.0 TVD:5990.4 I:0.1 A:100.2 VS:-444.4



6070

6080

6090

6100

6110

6120

6130

6140

6150

6160

6170

6180

6190

6200

6210

6220

6230

6240

6250

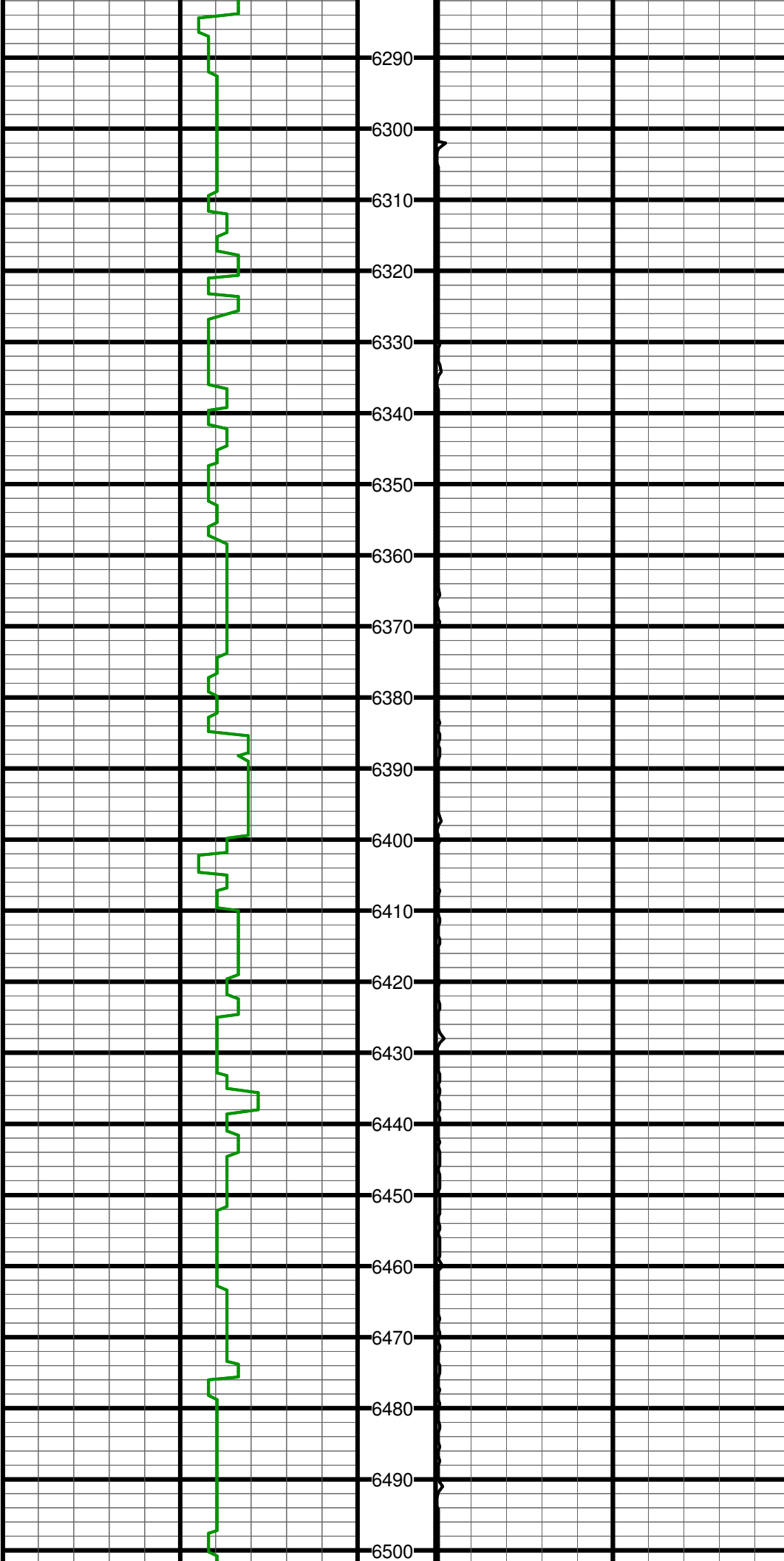
6260

6270

6280

#66 MD:6124.0 TVD:6085.4 I:0.1 A:324.0 VS:-444.4

#67 MD:6218.0 TVD:6179.4 I:0.0 A:173.7 VS:-444.3

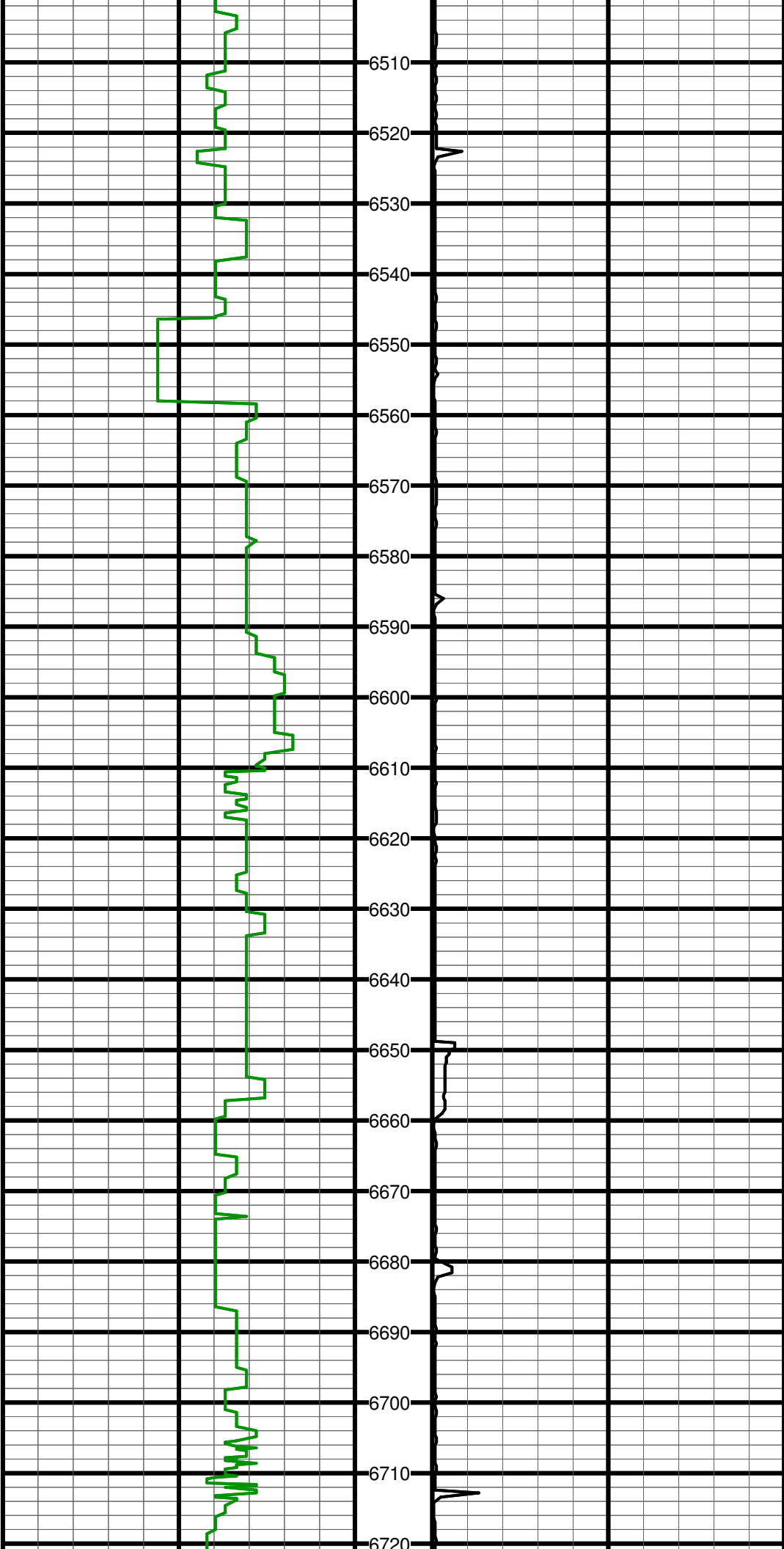


#68 MD:6313.0 TVD:6274.4 I:1.2 A:292.9 VS:-443.9

#69 MD:6407.0 TVD:6368.3 I:1.5 A:287.6 VS:-443.2

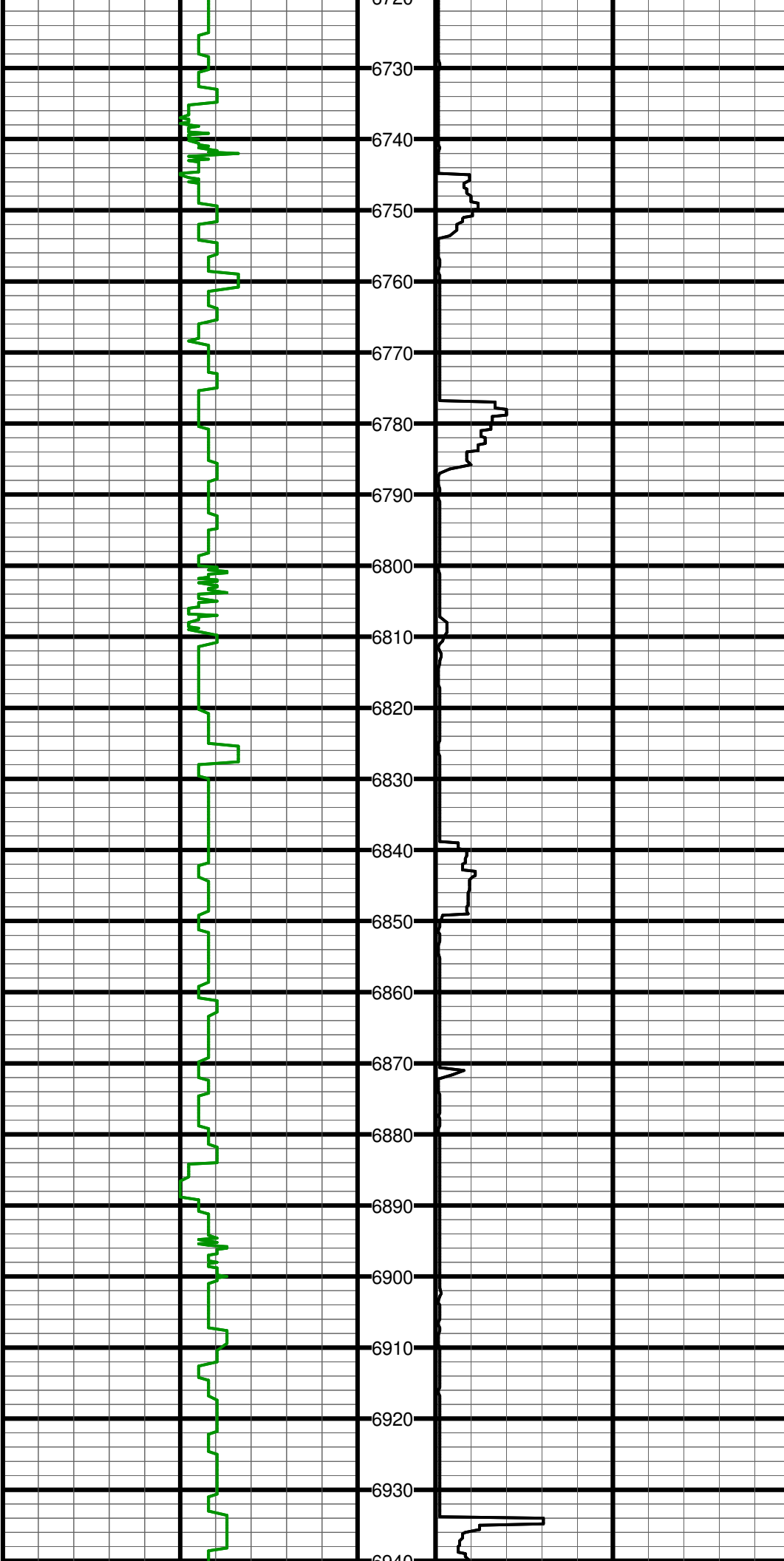
#70 MD:6500.0 TVD:6463.3 I:1.1 A:281.1 VS:-441.0

#70 MD:6502.0 TVD:6463.3 I:1.1 A:8.1 VS:-441.9



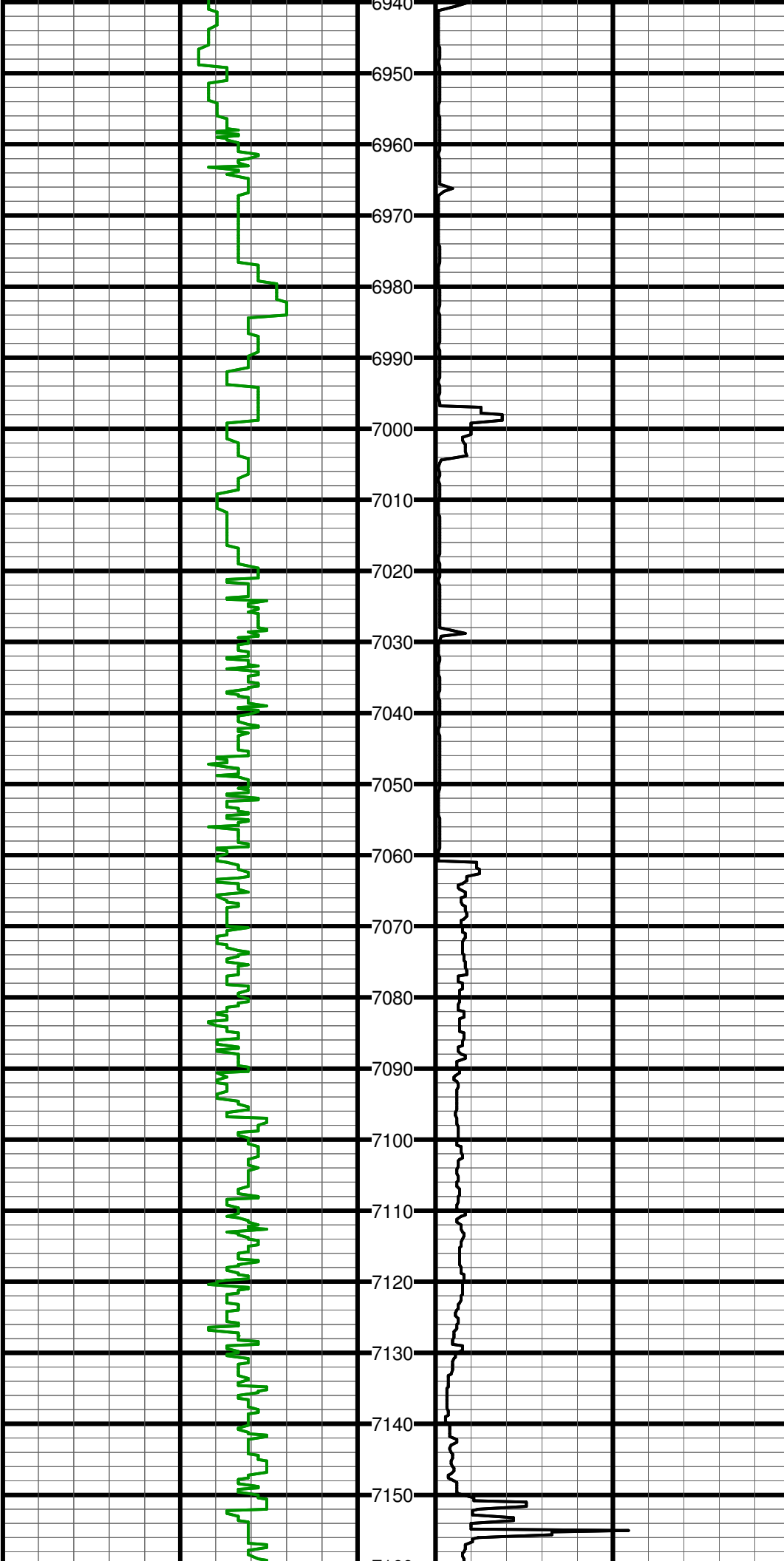
#71 MD:6597.0 TVD:6558.3 I:1.5 A:8.8 VS:-439.8

#72 MD:6692.0 TVD:6653.3 I:1.1 A:8.7 VS:-437.6



#73 MD:6787.0 TVD:6748.3 I:1.2 A:73.6 VS:-436.5

#74 MD:6881.0 TVD:6842.2 I:2.2 A:230.8 VS:-437.3



#75 MD:6944.0 TVD:6905.2 I:1.5 A:200.0 VS:-438.9

#76 MD:7008.0 TVD:6969.2 I:0.4 A:169.5 VS:-439.9

#77 MD:7039.0 TVD:7000.2 I:0.4 A:209.4 VS:-440.1

#78 MD:7071.0 TVD:7032.2 I:1.8 A:340.6 VS:-439.7

#79 MD:7102.0 TVD:7063.1 I:4.7 A:346.6 VS:-438.0

#80 MD:7134.0 TVD:7095.0 I:7.2 A:345.4 VS:-434.8

