



Digital Drilling Data
Systems, LLC

MD Build
(Scale: 5":.100' (100'))

Company: Cathedral Energy Services

State: CO

Well: Mathews 4E-14H

County: Weld

Field: DJ Basin

Country: USA

Well ID: 051233683800

Job Number: 135277

Location: Weld County

Elev KB: 5117
Elev DF:

Operator 1: Encana Oil & Gas

Elev GL: 5104

Operator 2:

Comment 1:

Comment 2:

Comment 3:

Comment 4:

Comment 5:

Hole Data

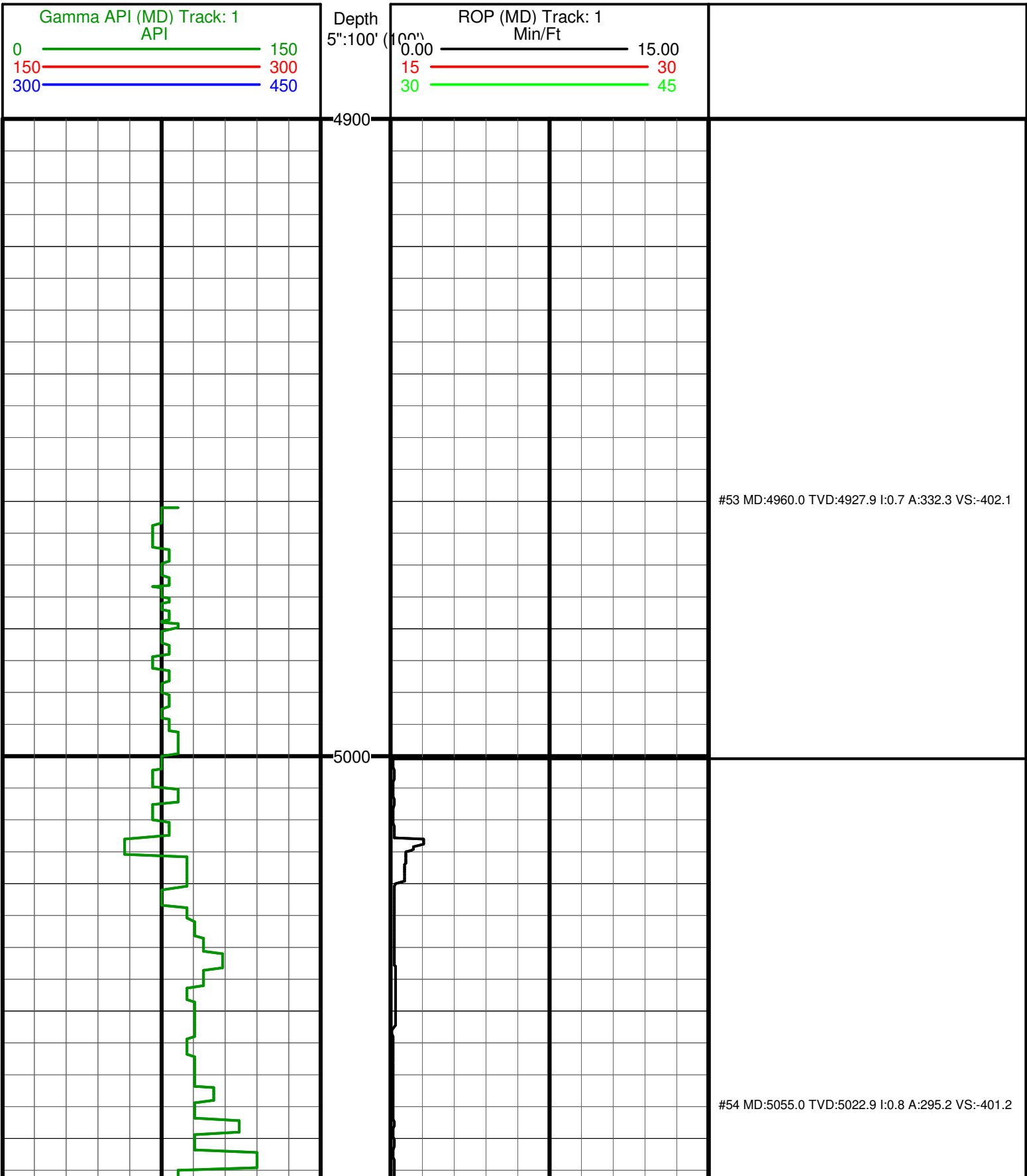
Casing Record

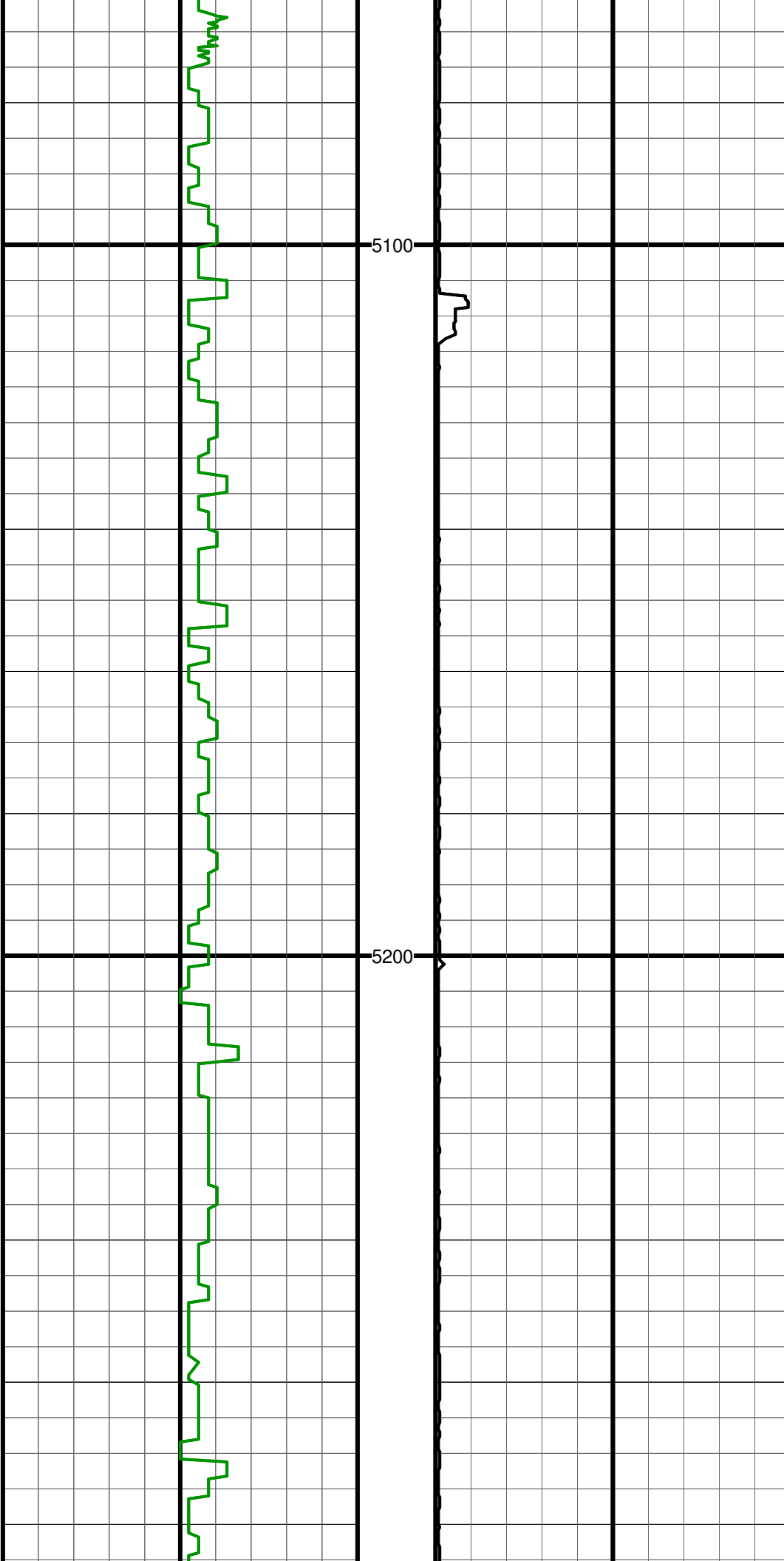
Size	From	To	Size	From	To
12.25	0	1365	9.625	0	1365
8.75	1365	7784			

Tool Run Data		Run #1	Run #2	Run #3	Run #4	Run #5
Tool S/N		1285	1285	1289	1545/195	1354/199
Cal Factor		4.15	4.15	2.97	2.97	2.97
Gamma Offset		38.82	38.82	36.26	38.45	38.45
Start Depth		5000	1365	7784	7784	8450
Start Date		6/20/13	6/21/13	6/25/13	6/26/13	6/27/13
Start Time		3:00	22:00	16:30	3:00	1:00
End Depth		1365	7784	7784	8450	8450
End Date		6/20/13	6/24/13	6/26/13	6/27/13	6/27/13
End Time		18:30	13:00	2:30	0:00	6:00

Tool Run Data	Run #6	Run #7	Run #8	Run #9	Run #10
Tool S/N	1285				
Cal Factor	2.97				
Offset	36.26				
Start Depth	8450				
Start Date	6/27/13				
Start Time	6:30				
End Depth	11942				
End Date	6/30/13				
End Time	4:00				
Tool Run Data	Run #11	Run #12	Run #13	Run #14	Run #15
Tool S/N					
Cal Factor					
Offset					
Start Depth					
Start Date					
Start Time					
End Depth					

End Date					
End Time					



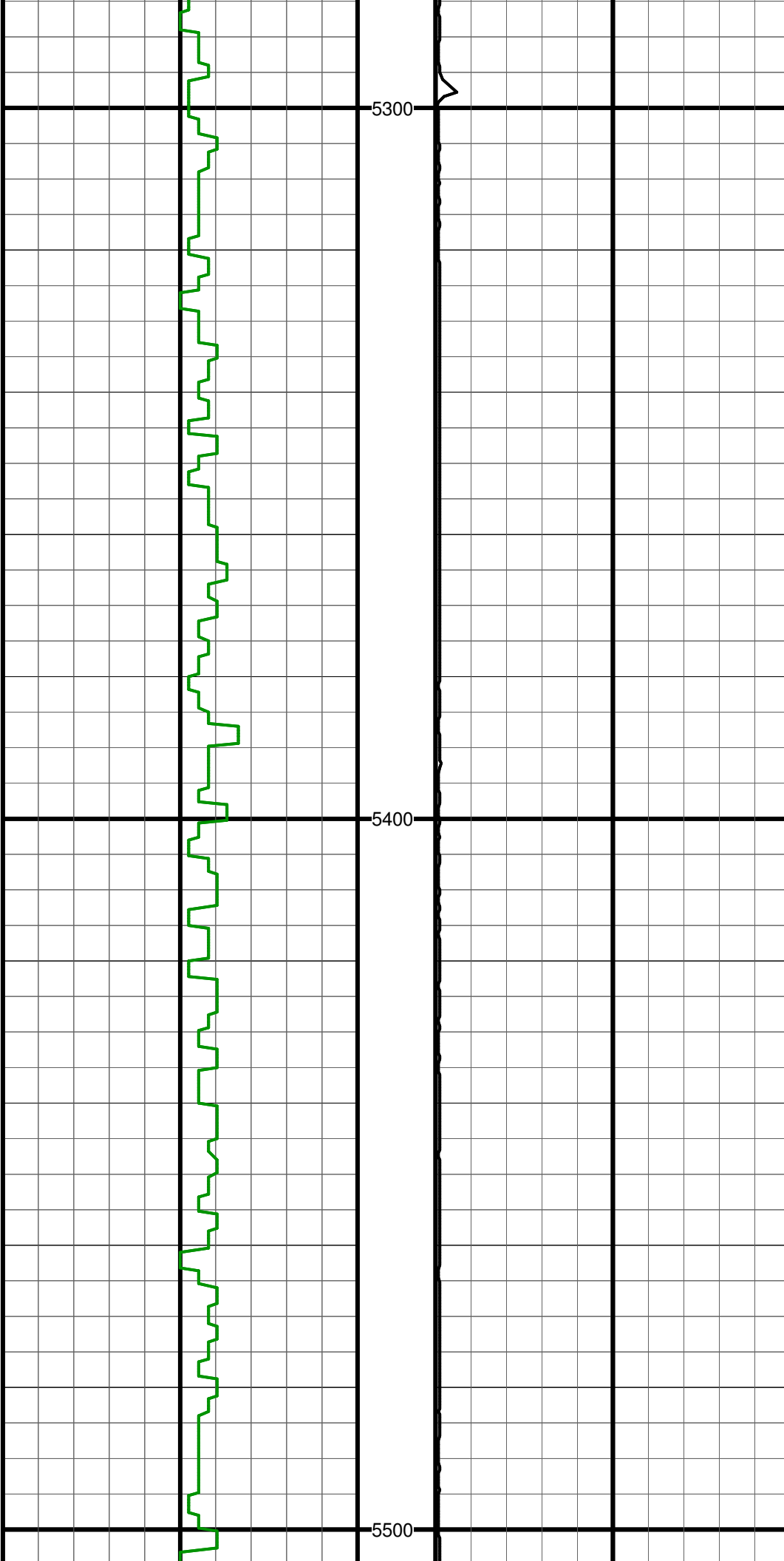


5100

5200

#55 MD:5150.0 TVD:5117.8 I:1.4 A:236.9 VS:-401.5

#56 MD:5245.0 TVD:5212.8 I:0.6 A:254.5 VS:-402.2



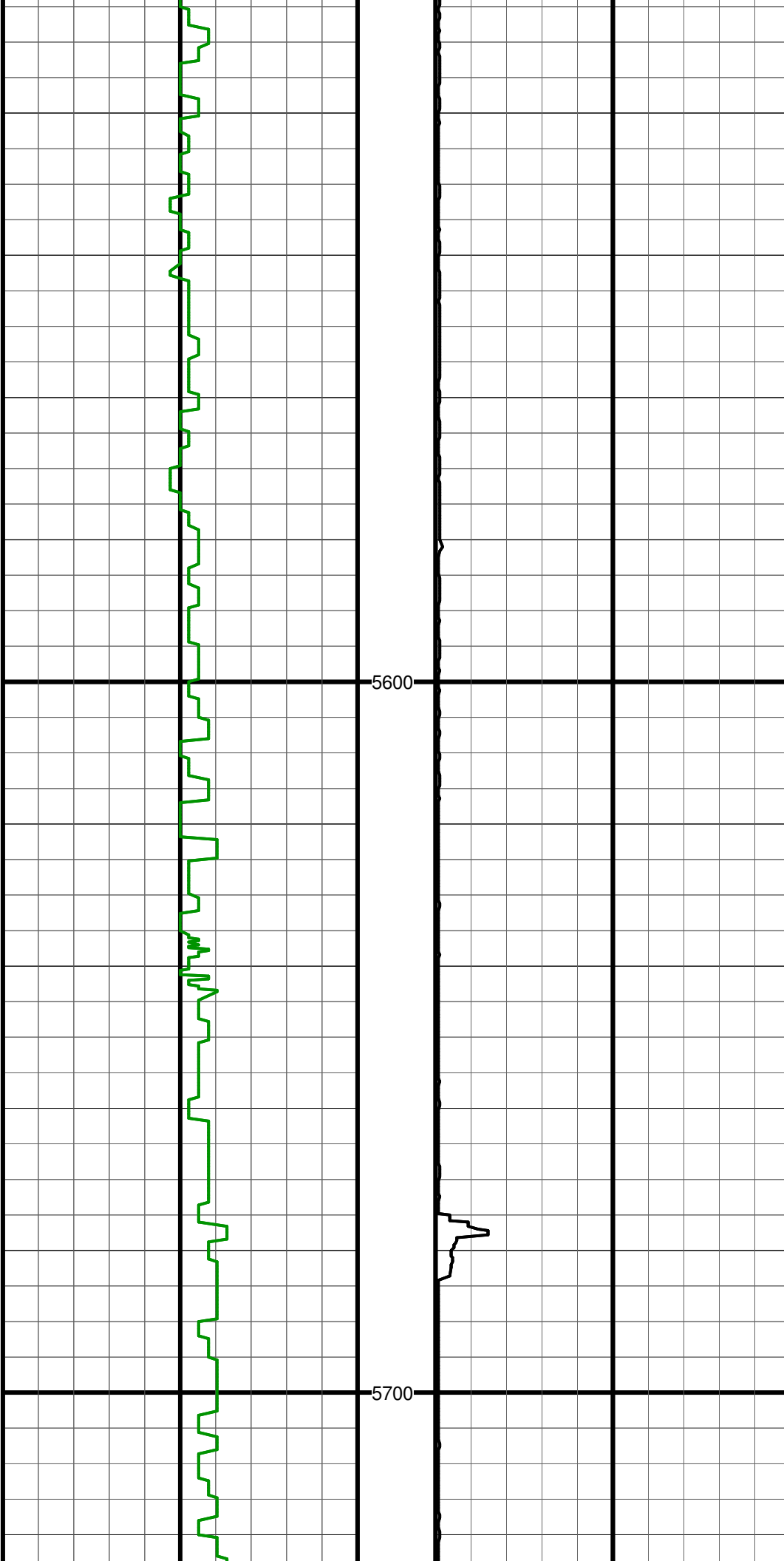
5300

#57 MD:5340.0 TVD:5307.8 I:0.3 A:347.5 VS:-402.1

5400

#58 MD:5434.0 TVD:5401.8 I:0.6 A:14.2 VS:-401.3

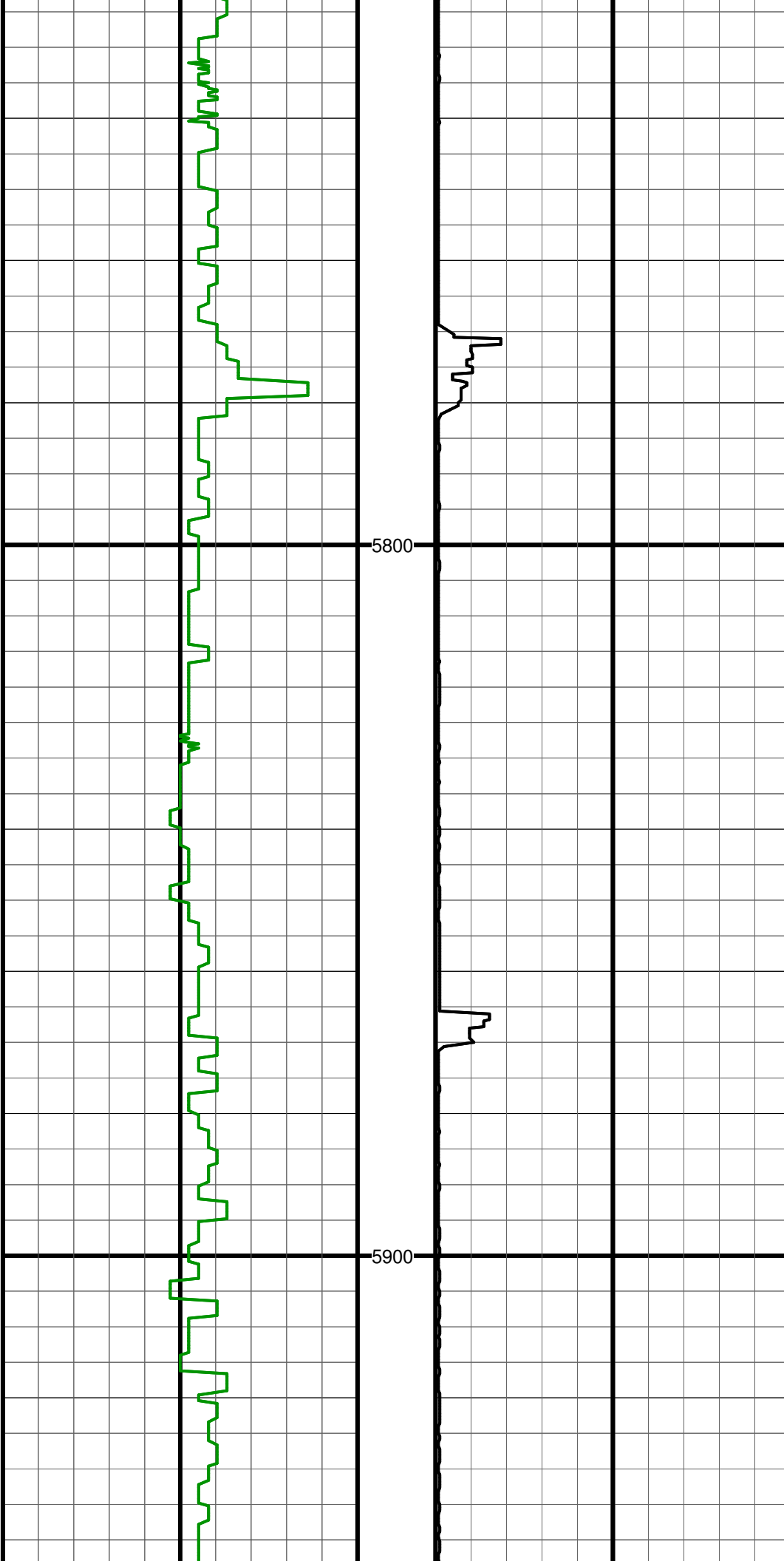
5500



#59 MD:5529.0 TVD:5496.8 I:0.9 A:16.6 VS:-400.2

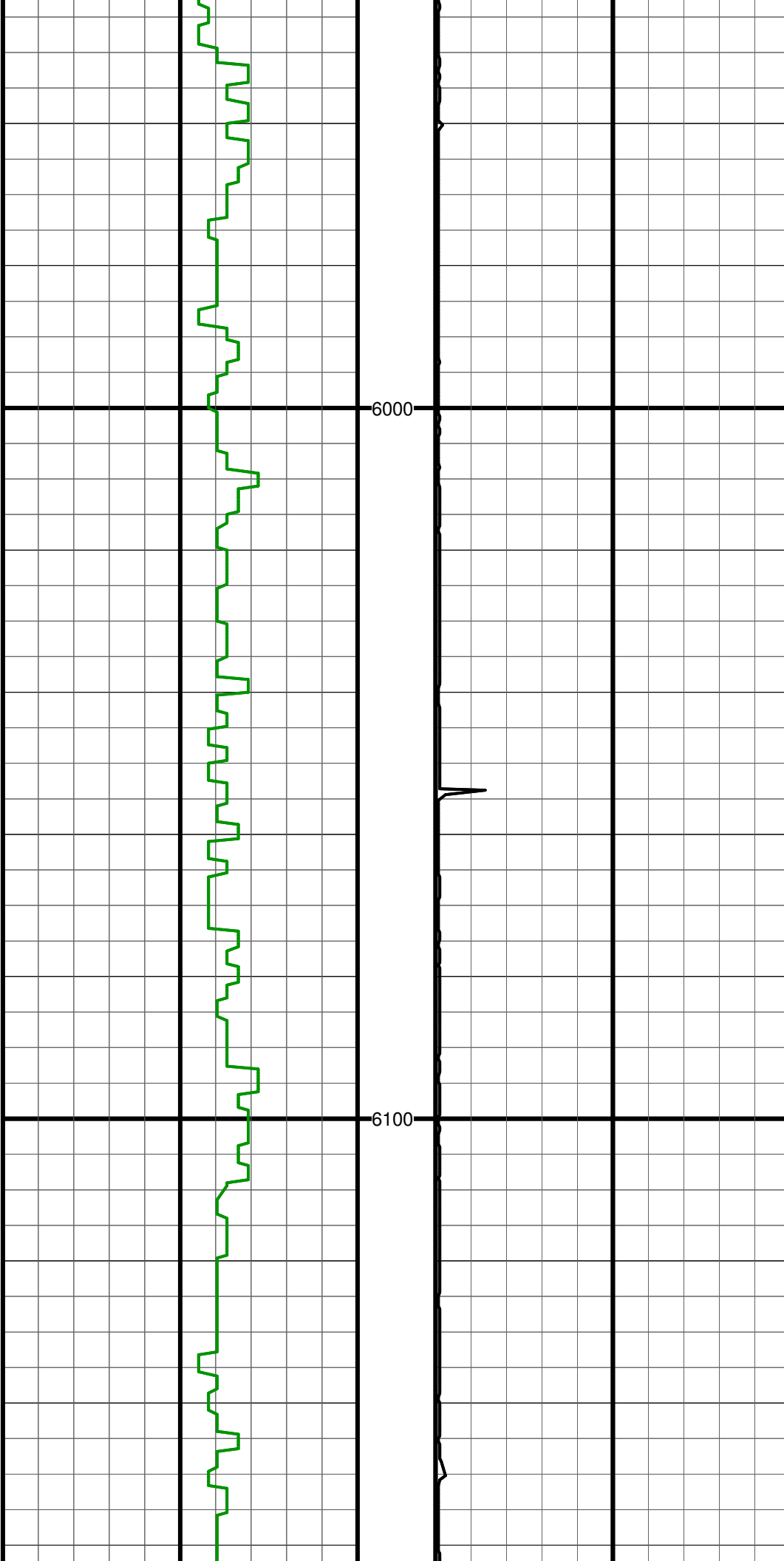
#60 MD:5624.0 TVD:5591.8 I:1.0 A:2.2 VS:-398.6

#61 MD:5718.0 TVD:5685.8 I:1.1 A:306.7 VS:-397.2



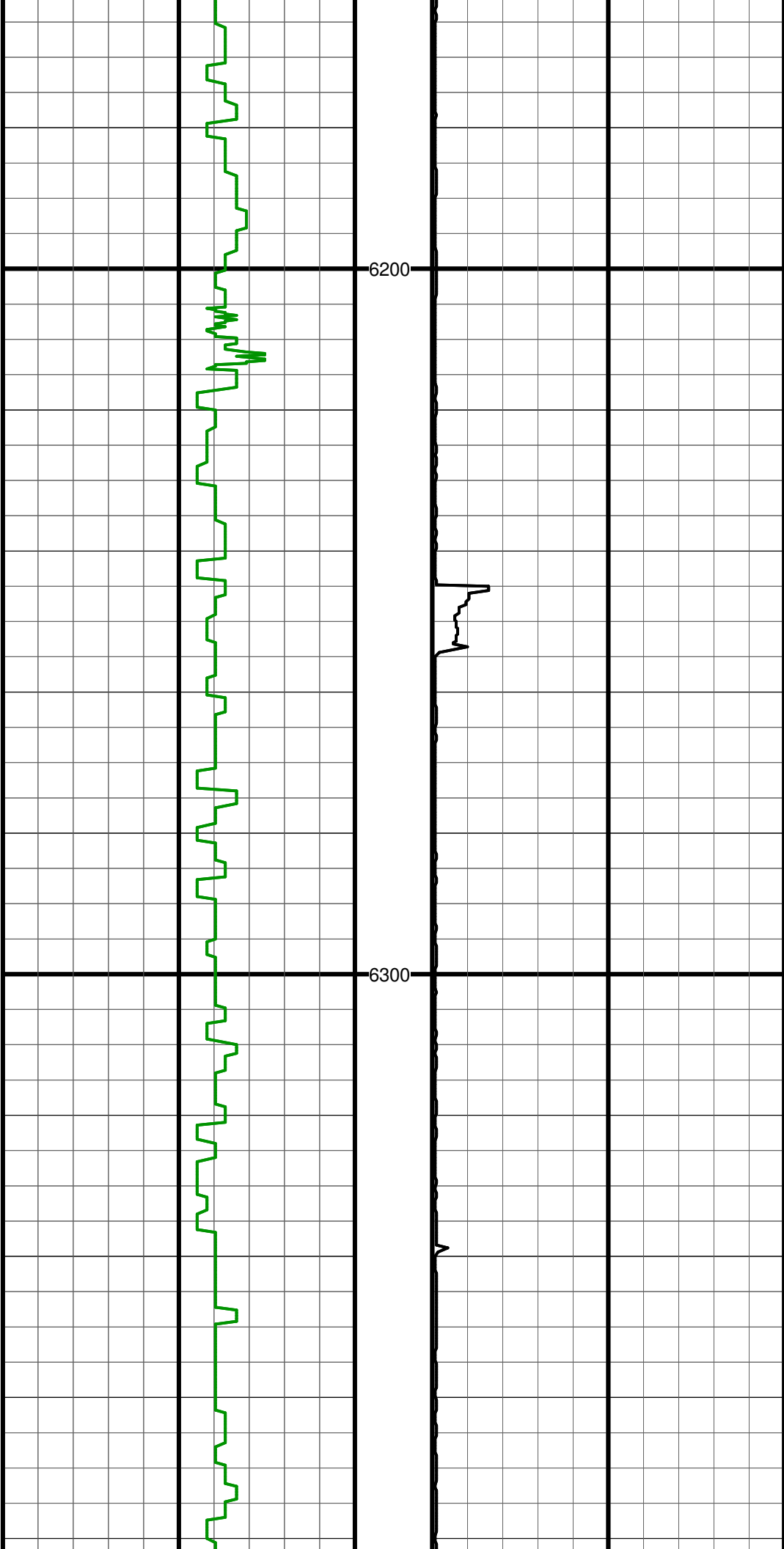
#62 MD:5813.0 TVD:5780.8 I:0.8 A:92.7 VS:-396.7

#63 MD:5907.0 TVD:5874.8 I:1.4 A:139.9 VS:-397.7



#64 MD:6002.0 TVD:5969.7 I:1.1 A:136.7 VS:-399.3

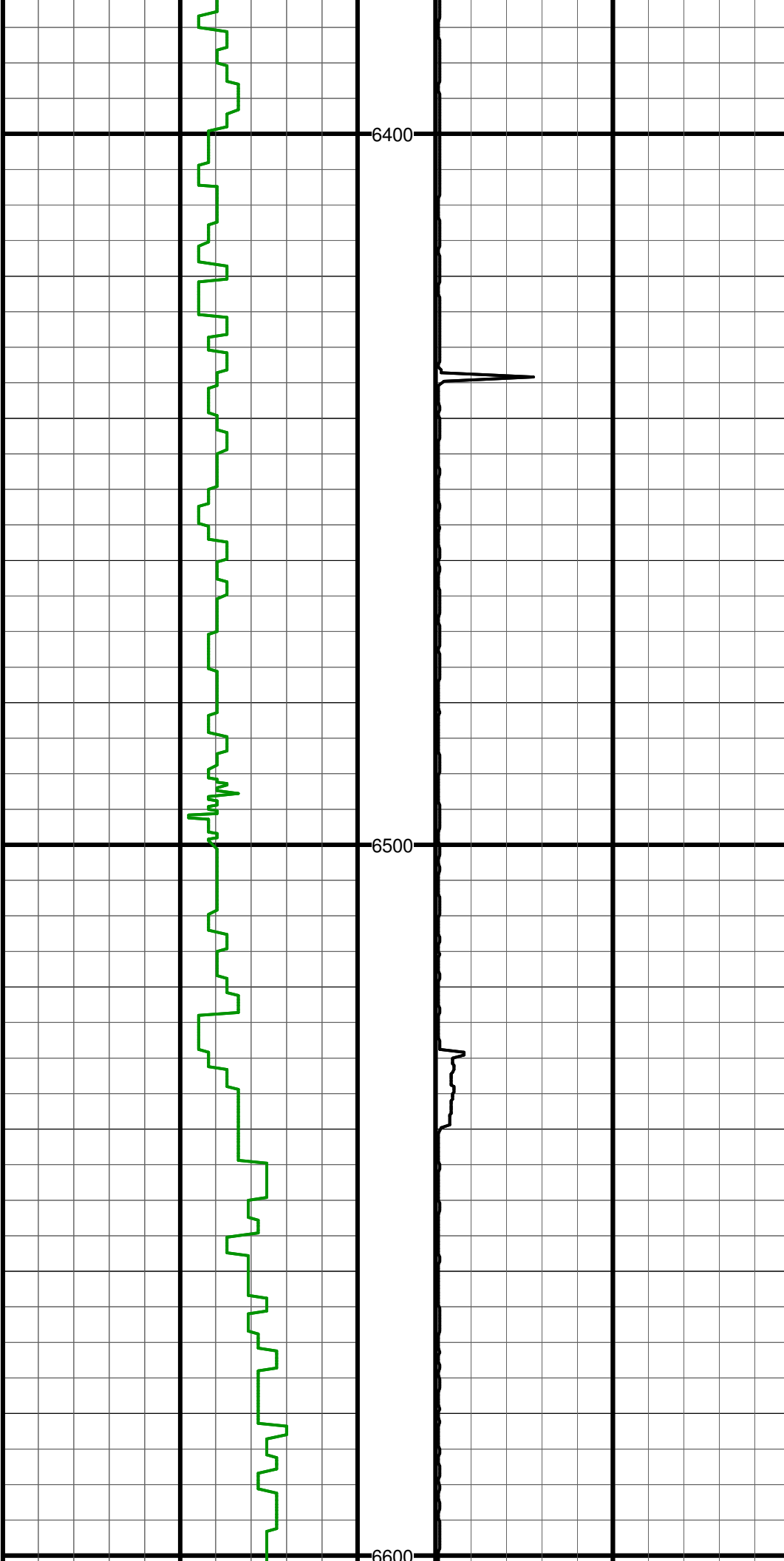
#65 MD:6097.0 TVD:6064.7 I:0.6 A:118.4 VS:-400.3



#66 MD:6192.0 TVD:6159.7 I:0.4 A:58.5 VS:-400.4

#67 MD:6287.0 TVD:6254.7 I:0.7 A:172.4 VS:-400.8

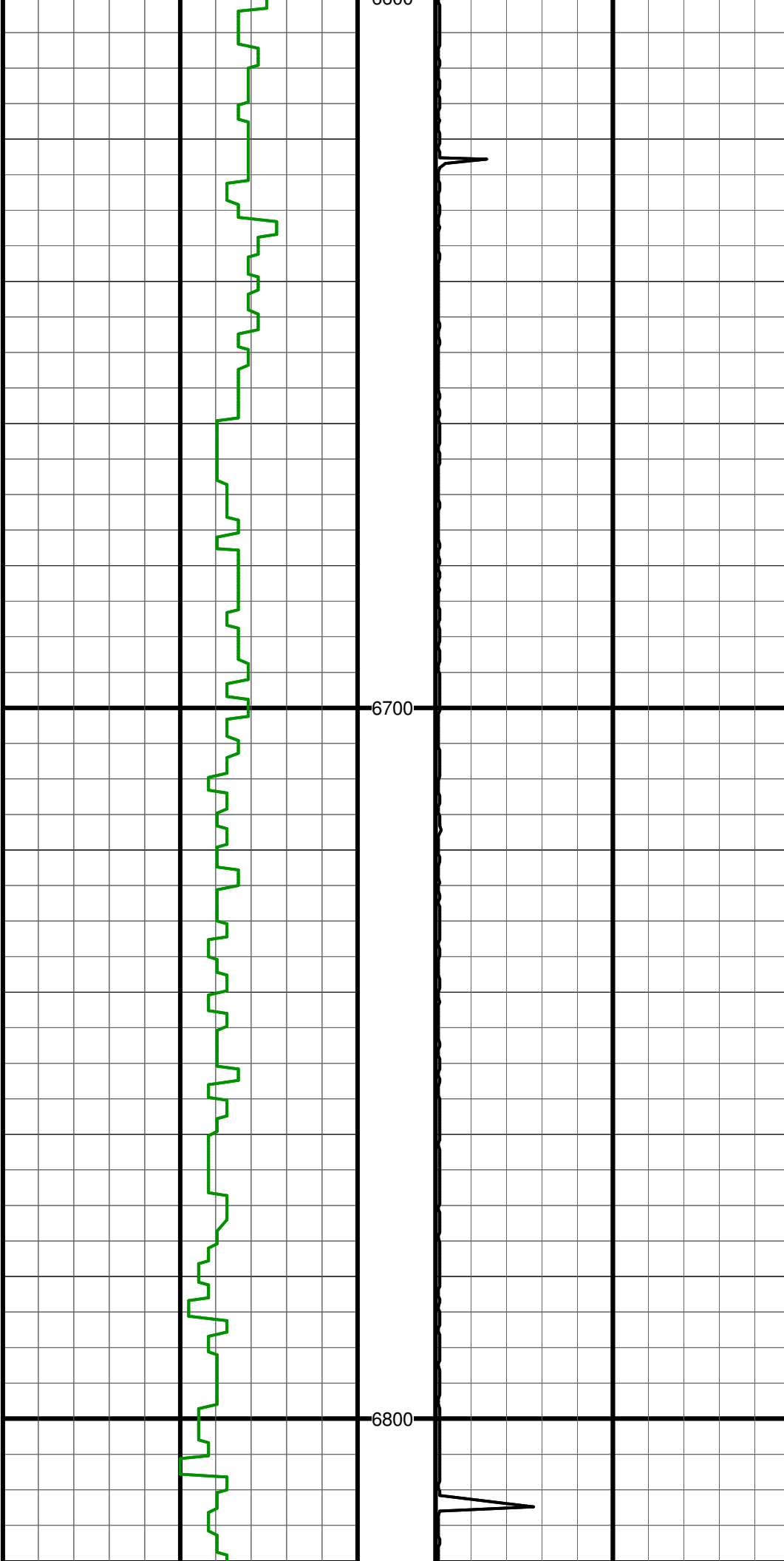
#68 MD:6381.0 TVD:6348.7 I:0.6 A:61.2 VS:-401.2



#68 MD:6551.0 TVD:6510.7 I:0.0 A:31.2 VS:-101.2

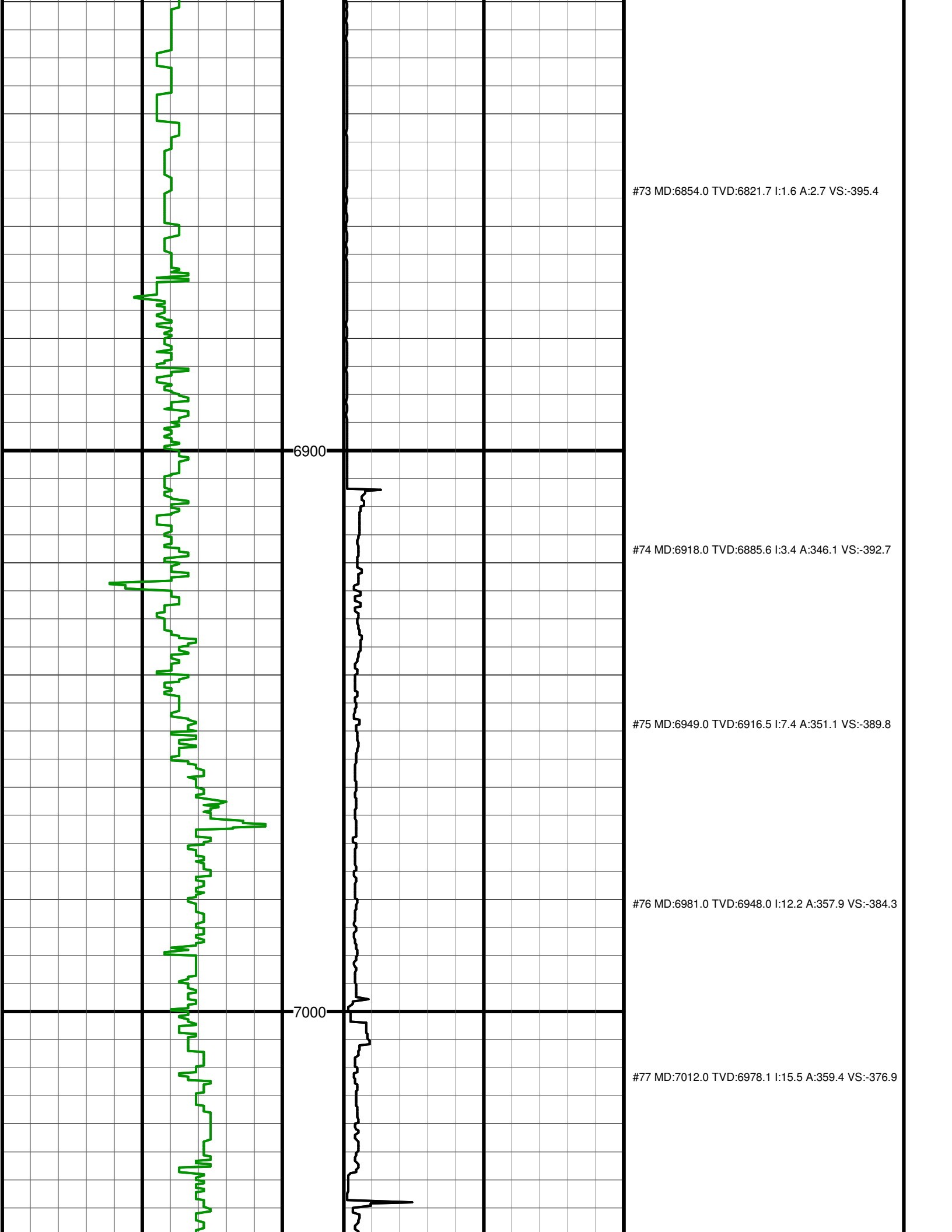
#69 MD:6476.0 TVD:6443.7 I:1.3 A:24.4 VS:-400.0

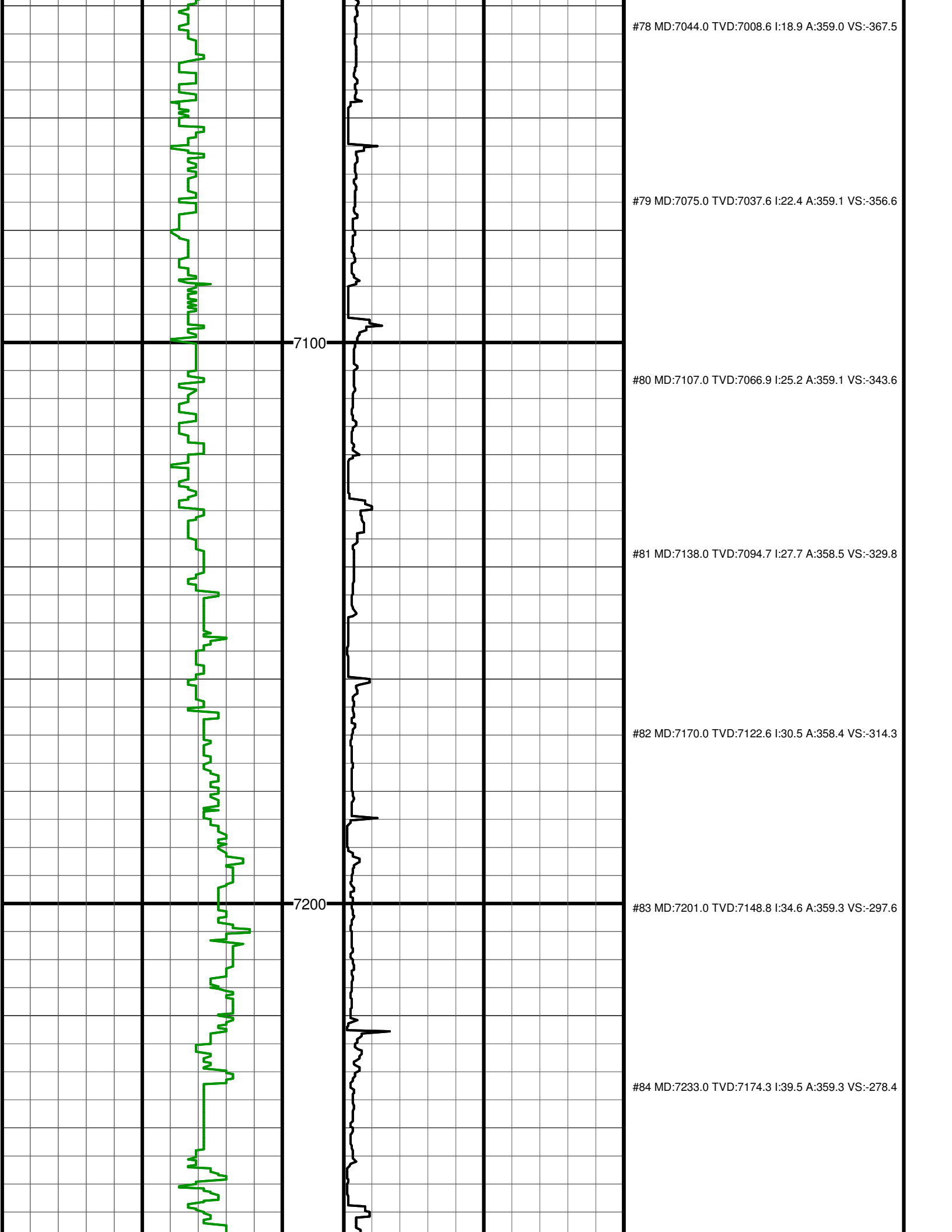
#70 MD:6570.0 TVD:6537.7 I:1.0 A:270.7 VS:-399.0

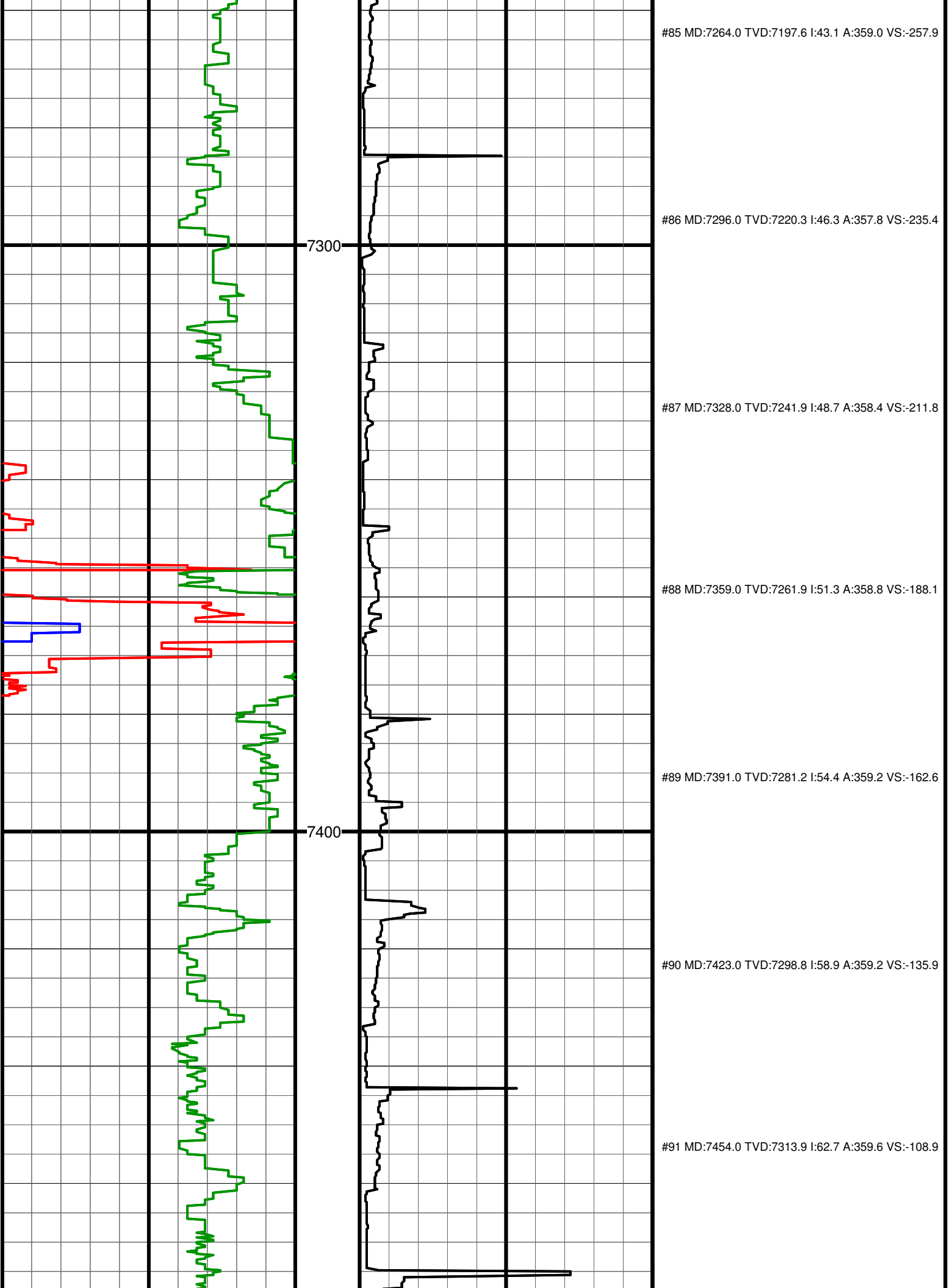


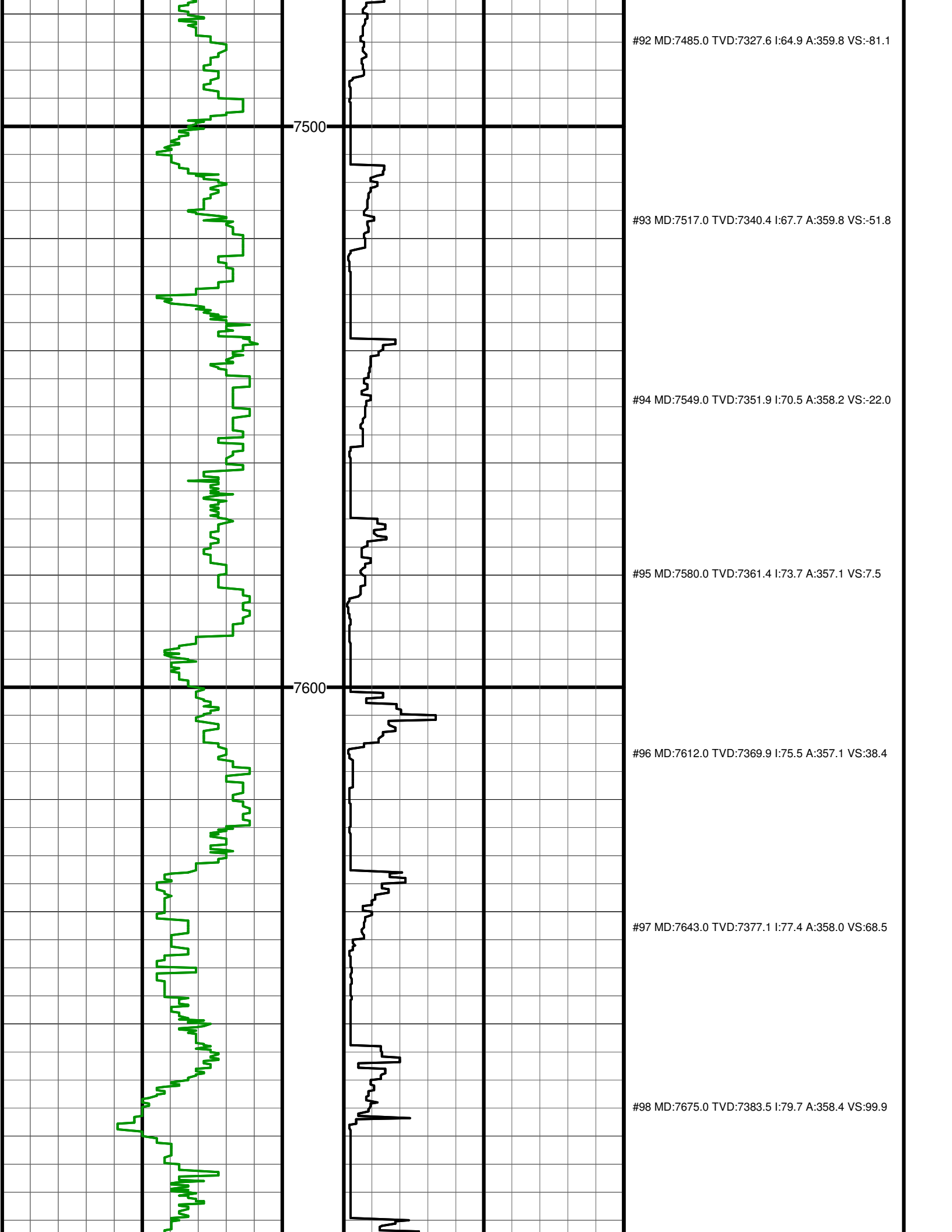
#71 MD:6665.0 TVD:6632.7 I:0.7 A:306.7 VS:-398.6

#72 MD:6760.0 TVD:6727.7 I:0.9 A:4.4 VS:-397.5









#92 MD:7485.0 TVD:7327.6 I:64.9 A:359.8 VS:-81.1

7500

#93 MD:7517.0 TVD:7340.4 I:67.7 A:359.8 VS:-51.8

#94 MD:7549.0 TVD:7351.9 I:70.5 A:358.2 VS:-22.0

#95 MD:7580.0 TVD:7361.4 I:73.7 A:357.1 VS:7.5

7600

#96 MD:7612.0 TVD:7369.9 I:75.5 A:357.1 VS:38.4

#97 MD:7643.0 TVD:7377.1 I:77.4 A:358.0 VS:68.5

#98 MD:7675.0 TVD:7383.5 I:79.7 A:358.4 VS:99.9

