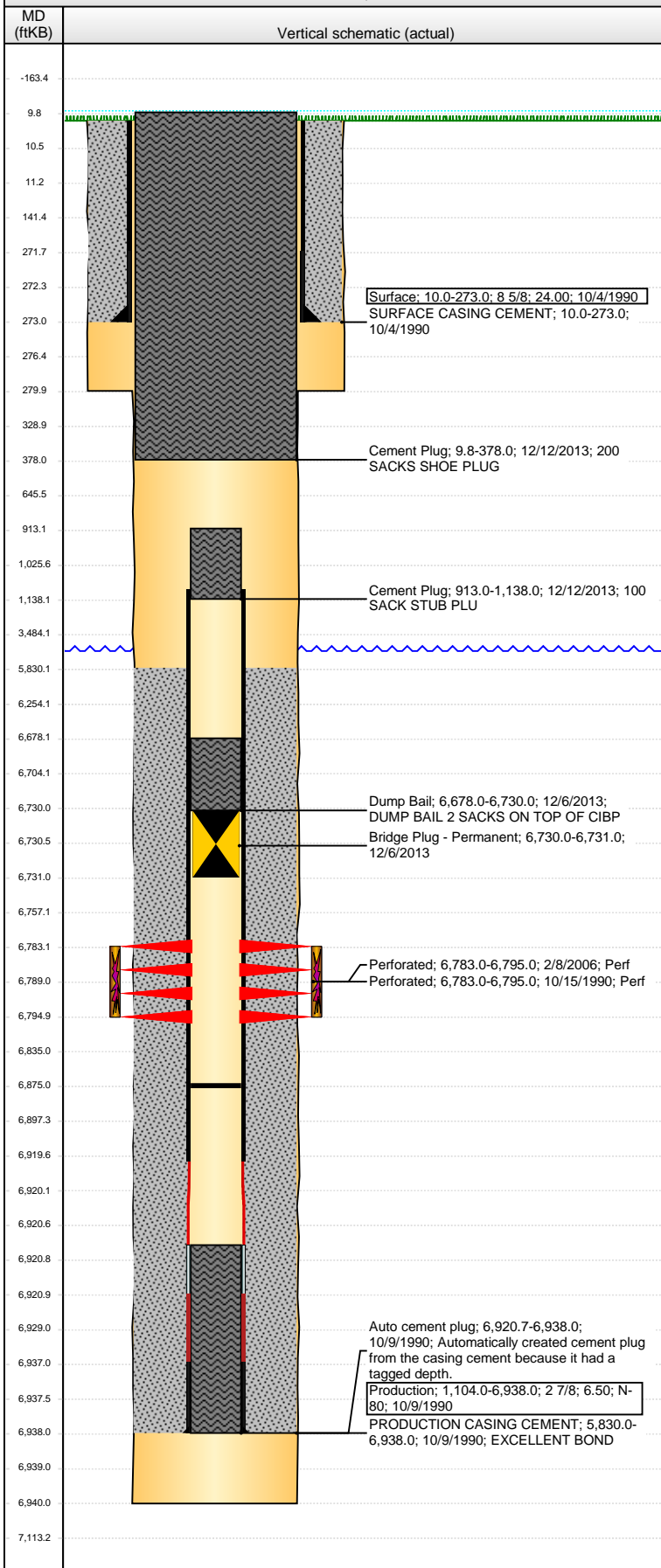


Well Name: LARSON A25- 7

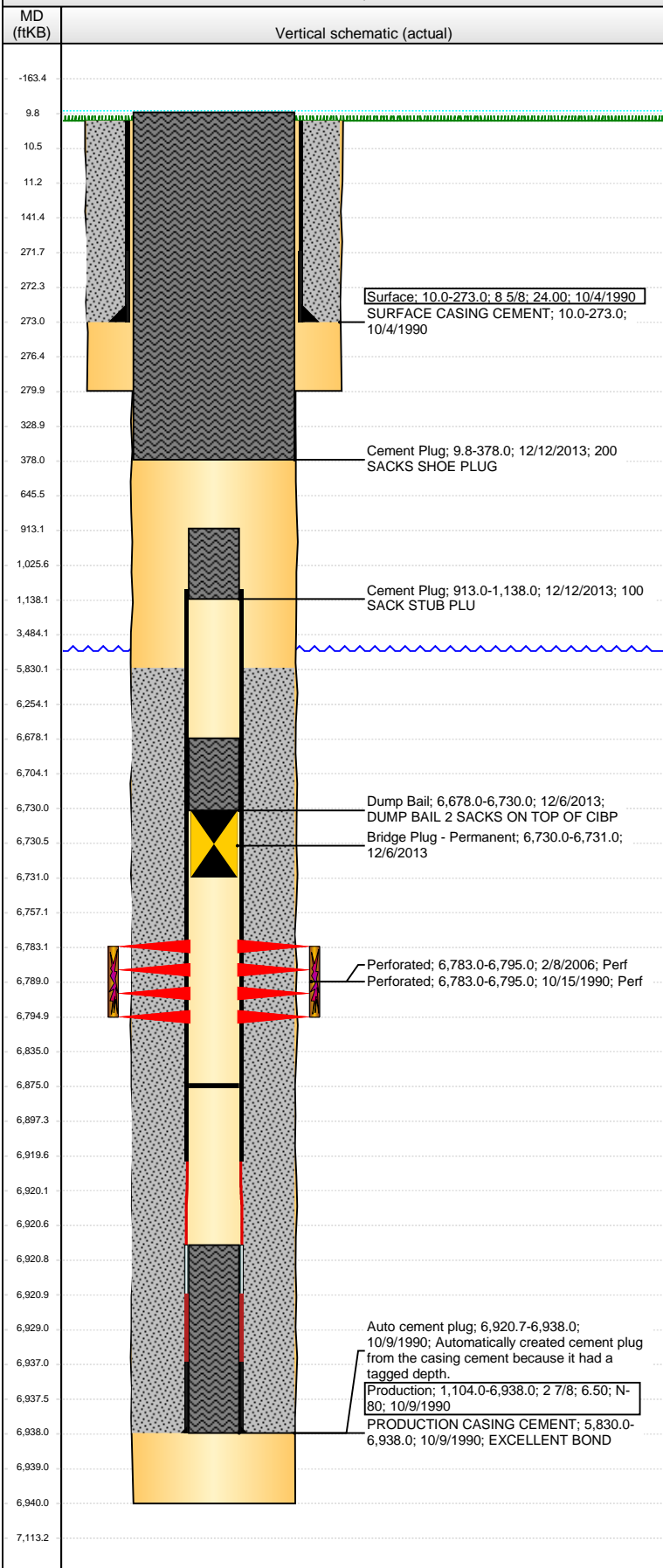
VERTICAL - ORIGINAL HOLE, 1/6/2014 1:52:53 PM



Well Header							
API	Business Unit		District		Well Config		
05-123-14721	WATTENBERG		15		VERTICAL		
Original KB Elevation (ft)	KB - GL / MSL (ftKB)		Spud Date		P & A Date		
4,646.00	10.00		10/4/1990		12/12/2013		
Comment							
Directions To Well							
Congressional Location							
Quarter 1	Quarter 2	Quarter 3	Quarter 4	Section	Township	Twnshp N...	Range Rng E/W Dir
		SW	NE	25	6 N		64 W
Bottom Hole Location							
North-South Distance (ft)		From N or S Line		East-West Distance (ft)		From E or W Line	
Plug Back Total Depths							
Date	Depth (ftKB)	Method		Com			
10/9/1990	6,920.7	CASING TALLY		TOP OF LATCH DOWN BAFFLE			
10/15/1990	6,806.0	CASED HOLE LOG		CBL DEPTH LOGGER			
2/27/2006	6,875.0	TAG		LAST CLEANOUT OF WB			
Wellbore Sections							
Section Des		Size (in)	Act Top, MD (ftKB)		Act Btm, MD (ftKB)		
SURFACE		12 1/4	10.0		280.0		
PRODUCTION		7 7/8	280.0		6,940.0		
Zone Statuses							
Zone Name	Status Date	Status		Job			
CODELL	4/3/2006	PR		RE-FRAC, 2/6/2006 00:00			
CODELL	12/12/2013	P&A		ABANDON WELL, 12/2/2013 06:00			
Casing Strings							
Surface, 273.0ftKB							
Casing Description	Run Date	OD (in)	Wt/Len (l...)	Grade	Top, MD (ft...)	MD (ftKB)	
Surface	10/4/1990	8 5/8	24.00		10.0	273.0	
Production, 6,938.0ftKB							
Casing Description	Run Date	OD (in)	Wt/Len (l...)	Grade	Top, MD (ft...)	MD (ftKB)	
Production	10/9/1990	2 7/8	6.50	N-80	10.0	6,938.0	
Cement							
Description	Top Depth (ftKB)		Bottom Depth (ftKB)				
SURFACE CASING CEMENT	10.0		273.0				
Production CASING CEMENT	5,830.0		6,938.0				
Dump Bail	6,678.0		6,730.0				
Cement Plug	913.0		1,138.0				
Cement Plug	9.8		378.0				
Tubing Components							
Item Des	OD (in)	Wt (lb/ft)	Grade	Jts	Len (ft)	Btm (ftKB)	Btm (TVD) (ftKB)
Perforation Data							
Zone	Bnch/St g	Entered Shot Total	Top (ftKB)	Btm (ftKB)	Date		
CODELL, ORIGINAL HOLE		48	6,783.00	6,795.00	2/8/2006		
CODELL, ORIGINAL HOLE		26	6,783.00	6,795.00	10/15/1990		
Stimulations & Treatments							
Date	Zone	Primary Job Type					
10/19/1990	CODELL, ORIGINAL HOLE	DRILLING/COMPLETION - ORIGINAL					
Technical Result		Tech Result Details			Tech Result Note		
Success		According to Plan					
Comment							
POST FRAC ISIP'S:							
5 MIN = 3510 PSI							
10 MIN = 3400 PSI							
15 MIN = 3360 PSI							
Date	Zone	Primary Job Type					
2/24/2006	CODELL, ORIGINAL HOLE	RE-FRAC					
Technical Result		Tech Result Details			Tech Result Note		
Success		According to Plan					
Comment							
POST FRAC 5 MIN ISIP = 3498							

Well Name: LARSON A25- 7

VERTICAL - ORIGINAL HOLE, 1/6/2014 1:52:55 PM



Other In Hole				
Run Date	Des	OD (in)	Top (ftKB)	Btm (ftKB)
12/6/2013	Bridge Plug - Permanent	2 1/4	6,730.0	6,731.0

Logs			
Date	Type	Top, MD (ftKB)	Btm, MD (ftKB)
10/9/1990	COMPENSATED DENSITY	3,445.0	6,929.0
10/9/1990	INDUCTION	273.0	6,946.0
10/15/1990	CBL/CCL/GR	5,700.0	6,801.0
12/3/2013	GYRO	0.0	6,600.0
12/6/2013	CBL/CCL/GR	0.0	5,800.0