

Location:	COLORADO	Slot:	SLOT#01 STATE NORTH PLATTE K-O-36HC (350'FNL & 520'FWL,SEC.36)
Field:	WELD COUNTY	Well:	STATE NORTH PLATTE K-O-36HC
Facility:	SEC.36-T5N-R63W	Wellbore:	STATE NORTH PLATTE K-O-36HC PWB

Location:	COLORADO	Slot:	SLOT#01 STATE NORTH PLATTE K-O-36HC (350'FNL & 520'FWL,SEC.36)
Field:	WELD COUNTY	Well:	STATE NORTH PLATTE K-O-36HC
Facility:	SEC.36-T5N-R63W	Wellbore:	STATE NORTH PLATTE K-O-36HC PWB

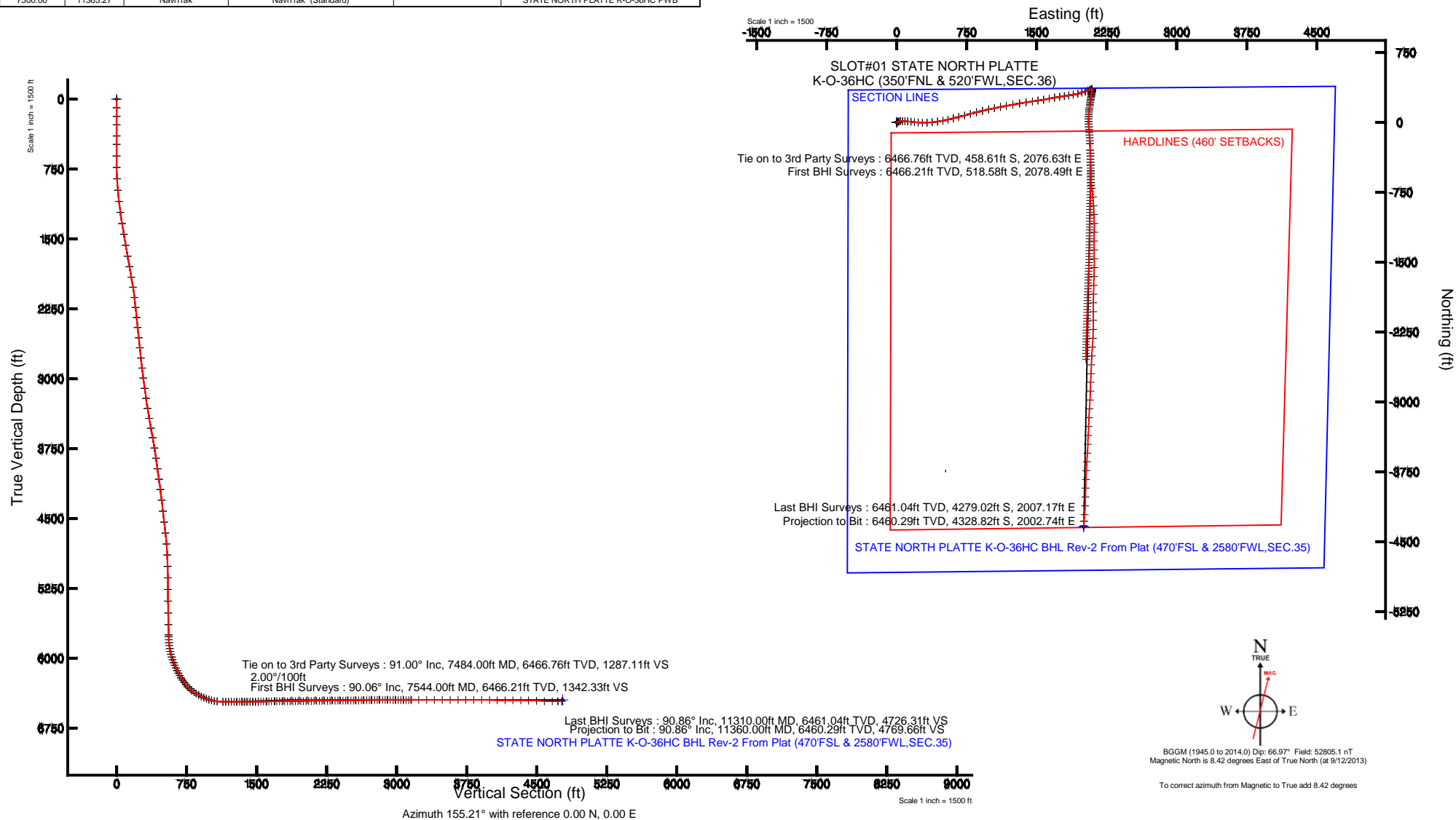
Plot reference wellpath is STATE NORTH PLATTE K-O-36HC (REV-C.0) Tied to Surveys PWP

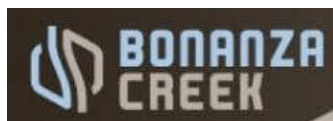
True vertical depths are referenced to CADE 22 (RKB)	Grid System: NAD83 / Lambert Colorado SP, Northern Zone (501), US feet
Measured depths are referenced to CADE 22 (RKB)	North Reference: True north
CADE 22 (RKB) to Mean Sea Level: 4560 feet	Scale: True distance
Mean Sea Level to Mud line (At Slot: SLOT#01 STATE NORTH PLATTE K-O-36HC (350FNL & 520FWL,SEC.36)): 0 feet	Depths are in feet
Coordinates are in feet referenced to Slot	Created by: gsmueler on 10/28/2013

Start MD (ft)	End MD (ft)	Tool	Model	Log Name/Comment	Wellbore
17.00	7500.00	ISCWSA MWD, Rev. 2	ISCWSA MWD, Rev. 2 (Standard)		STATE NORTH PLATTE K-O-36HC AWB
7500.00	11365.27	NaviTrak	NaviTrak (Standard)		STATE NORTH PLATTE K-O-36HC PWB

Facility Name		On/Off (S/E)	On/Off (S/E)	Latitude	Longitude
SAC de Ténésse					
Site		On/Off (S/E)	On/Off (S/E)	49°21'43.8027N	10°21'23.4670E
	Latitude/Longitude	Latitude (N)	On/Off (S/E)	On/Off (S/E)	Longitude
	0.00	0.00	On/Off (S/E)	49°21'43.8027N	10°21'23.4670E
CAGE 22 (RAE) in Marlow Bay (See SLOTTON STATE NORTHPLATE & O-BAWC (SLOTTON & SLOTTON SAC))					
6460					
Main Sea Launching Bay (See SLOTTON STATE NORTHPLATE & O-BAWC (SLOTTON & SLOTTON SAC))					
08					
CAGE 22 (RAE) in Main Sea Launch					
6460					

Design Comment	MD (ft)	Inc (")	Az (")	TVD (ft)	Local N (ft)	Local E (ft)	DLS ("'/100ft)	VS (ft)
Tie On	7500.00	90.00	129.00	6466.50	-474.61	2067.92	0.00	1301.76
End of 3D Arc	7620.27	92.000	181.113	6463.51	-594.83	2078.81	2.00	1410.85
End of Tangent	8043.41	92.000	181.113	6464.75	-1017.63	2068.59	0.00	1791.24
End of Drop	8143.41	90.000	181.113	6447.00	-1117.59	2066.65	2.00	1881.17
End of Tangent	11365.27	90.000	181.113	6447.00	-4338.84	2004.04	0.00	4779.30





Actual Wellpath Report

STATE NORTH PLATTE K-O-36HC ST01 AWP

Page 1 of 5



REFERENCE WELLPATH IDENTIFICATION			
Operator	BONANZA CREEK OIL COMPANY	Slot	SLOT#01 STATE NORTH PLATTE K-O-36HC (350'FNL & 520'FWL,SEC.36)
Area	COLORADO	Well	STATE NORTH PLATTE K-O-36HC ST01
Field	WELD COUNTY	Wellbore	STATE NORTH PLATTE K-O-36HC ST01 AWB
Facility	SEC.36-T5N-R63W	Sidetrack from	STATE NORTH PLATTE K-O-36HC AWB at 7484.00 MD

REPORT SETUP INFORMATION			
Projection System	NAD83 / Lambert Colorado SP, Northern Zone (501), US feet	Software System	WellArchitect@ 4.0.0
North Reference	True	User	Guenaler
Scale	0.999959	Report Generated	10/28/2013 at 10:54:23 AM
Convergence at slot	n/a	Database/Source file	WA_Denver/STATE_NORTH_PLATTE_K-O-36HC_ST01_AWB.xml

WELLPATH LOCATION						
	Local coordinates		Grid coordinates		Geographic coordinates	
	North[ft]	East[ft]	Easting[US ft]	Northing[US ft]	Latitude	Longitude
Slot Location	0.00	0.00	3308733.91	1376726.04	40°21'43.992"N	104°23'31.452"W
Facility Reference Pt			3308733.91	1376726.04	40°21'43.992"N	104°23'31.452"W
Field Reference Pt			3327718.19	1377782.99	40°21'52.020"N	104°19'26.040"W

WELLPATH DATUM			
Calculation method	Minimum curvature	CADE 22 (RKB) to Facility Vertical Datum	4560.00ft
Horizontal Reference Pt	Slot	CADE 22 (RKB) to Mean Sea Level	4560.00ft
Vertical Reference Pt	CADE 22 (RKB)	CADE 22 (RKB) to Mud Line at Slot (SLOT#01 STATE NORTH PLATTE K-O-36HC (350'FNL & 520'FWL,SEC.36))	4560.00ft
MD Reference Pt	CADE 22 (RKB)	Section Origin	N 0.00, E 0.00 ft
Field Vertical Reference	Mean Sea Level	Section Azimuth	155.21°



Actual Wellpath Report

STATE NORTH PLATTE K-O-36HC ST01 AWP

Page 2 of 5



REFERENCE WELLPATH IDENTIFICATION

Operator	BONANZA CREEK OIL COMPANY	Slot	SLOT#01 STATE NORTH PLATTE K-O-36HC (350'FNL & 520'FWL,SEC.36)
Area	COLORADO	Well	STATE NORTH PLATTE K-O-36HC ST01
Field	WELD COUNTY	Wellbore	STATE NORTH PLATTE K-O-36HC ST01 AWP
Facility	SEC.36-T5N-R63W	Sidetrack from	STATE NORTH PLATTE K-O-36HC AWP at 7484.00 MD

WELLPATH DATA (47 stations)

MD [ft]	Inclination [°]	Azimuth [°]	TVD [ft]	Vert Sect [ft]	North [ft]	East [ft]	Latitude	Longitude	DLS [°/100ft]	Comments
7484.00	91.000	178.900	6466.76	1287.11	-458.61	2076.63	40°21'39.459"N	104°23'04.626"W	1.16	Tie on to 3rd Party Surveys
7544.00	90.060	177.550	6466.21	1342.33	-518.58	2078.49	40°21'38.867"N	104°23'04.602"W	2.74	First BHI Surveys
7570.00	89.140	178.840	6466.39	1366.26	-544.56	2079.31	40°21'38.610"N	104°23'04.592"W	6.09	
7600.00	89.260	179.280	6466.81	1393.70	-574.56	2079.80	40°21'38.314"N	104°23'04.585"W	1.52	
7637.00	89.690	178.700	6467.15	1427.56	-611.55	2080.45	40°21'37.948"N	104°23'04.577"W	1.95	
7669.00	89.380	176.610	6467.41	1457.13	-643.52	2081.76	40°21'37.632"N	104°23'04.560"W	6.60	
7700.00	88.340	172.170	6468.02	1486.39	-674.36	2084.79	40°21'37.327"N	104°23'04.521"W	14.71	
7732.00	90.460	169.550	6468.36	1517.20	-705.94	2089.87	40°21'37.015"N	104°23'04.455"W	10.53	
7827.00	93.790	176.270	6464.83	1607.58	-800.08	2101.59	40°21'36.085"N	104°23'04.304"W	7.89	
7922.00	92.460	175.860	6459.65	1696.22	-894.72	2108.10	40°21'35.150"N	104°23'04.220"W	1.46	
8017.00	91.570	177.150	6456.31	1784.68	-989.48	2113.89	40°21'34.213"N	104°23'04.146"W	1.65	
8112.00	92.280	179.120	6453.12	1872.12	-1084.37	2116.98	40°21'33.276"N	104°23'04.106"W	2.20	
8207.00	90.650	181.370	6450.69	1958.15	-1179.33	2116.57	40°21'32.337"N	104°23'04.111"W	2.92	
8301.00	92.040	180.740	6448.49	2042.72	-1273.28	2114.84	40°21'31.409"N	104°23'04.134"W	1.62	
8396.00	88.150	179.010	6448.33	2129.04	-1368.26	2115.05	40°21'30.470"N	104°23'04.131"W	4.48	
8491.00	90.000	179.210	6449.86	2215.87	-1463.23	2116.52	40°21'29.532"N	104°23'04.112"W	1.96	
8586.00	90.190	180.690	6449.70	2302.15	-1558.23	2116.60	40°21'28.593"N	104°23'04.111"W	1.57	
8681.00	90.810	182.670	6448.88	2387.18	-1653.18	2113.82	40°21'27.655"N	104°23'04.147"W	2.18	
8776.00	90.190	181.170	6448.05	2472.04	-1748.12	2110.64	40°21'26.717"N	104°23'04.188"W	1.71	
8871.00	90.250	181.600	6447.68	2557.29	-1843.09	2108.34	40°21'25.778"N	104°23'04.218"W	0.46	
8965.00	91.180	181.330	6446.51	2641.59	-1937.05	2105.94	40°21'24.850"N	104°23'04.249"W	1.03	
9060.00	90.220	180.130	6445.35	2727.31	-2032.04	2104.73	40°21'23.911"N	104°23'04.265"W	1.62	
9152.00	90.410	179.510	6444.84	2810.95	-2124.03	2105.02	40°21'23.002"N	104°23'04.261"W	0.70	
9250.00	90.590	180.910	6443.99	2899.76	-2222.03	2104.66	40°21'22.034"N	104°23'04.266"W	1.44	
9345.00	89.630	182.380	6443.80	2984.82	-2316.98	2101.93	40°21'21.095"N	104°23'04.301"W	1.85	
9440.00	90.990	184.900	6443.29	3068.36	-2411.78	2095.90	40°21'20.159"N	104°23'04.379"W	3.01	
9535.00	88.880	182.240	6443.40	3151.94	-2506.58	2089.99	40°21'19.222"N	104°23'04.456"W	3.57	
9630.00	87.710	182.390	6446.22	3236.47	-2601.46	2086.15	40°21'18.284"N	104°23'04.506"W	1.24	
9725.00	90.620	183.280	6447.61	3320.62	-2696.32	2081.45	40°21'17.347"N	104°23'04.566"W	3.20	
9819.00	90.190	182.130	6446.94	3404.00	-2790.21	2077.02	40°21'16.419"N	104°23'04.624"W	1.31	



Actual Wellpath Report

STATE NORTH PLATTE K-O-36HC ST01 AWP

Page 3 of 5



REFERENCE WELLPATH IDENTIFICATION

Operator	BONANZA CREEK OIL COMPANY	Slot	SLOT#01 STATE NORTH PLATTE K-O-36HC (350'FNL & 520'FWL,SEC.36)
Area	COLORADO	Well	STATE NORTH PLATTE K-O-36HC ST01
Field	WELD COUNTY	Wellbore	STATE NORTH PLATTE K-O-36HC ST01 AWB
Facility	SEC.36-T5N-R63W	Sidetrack from	STATE NORTH PLATTE K-O-36HC AWB at 7484.00 MD

WELLPATH DATA (47 stations)

MD [ft]	Inclination [°]	Azimuth [°]	TVD [ft]	Vert Sect [ft]	North [ft]	East [ft]	Latitude	Longitude	DLS [°/100ft]	Comments
9914.00	89.350	181.070	6447.33	3489.09	-2885.17	2074.36	40°21'15.481"N	104°23'04.658"W	1.42	
10009.00	89.940	183.020	6447.91	3573.85	-2980.11	2070.97	40°21'14.543"N	104°23'04.702"W	2.14	
10104.00	90.620	184.090	6447.45	3657.46	-3074.92	2065.08	40°21'13.606"N	104°23'04.778"W	1.33	
10199.00	91.170	182.310	6445.97	3741.33	-3169.76	2059.78	40°21'12.669"N	104°23'04.847"W	1.96	
10294.00	88.710	182.010	6446.07	3826.01	-3264.68	2056.20	40°21'11.731"N	104°23'04.893"W	2.61	
10389.00	90.770	183.310	6446.50	3910.30	-3359.57	2051.79	40°21'10.793"N	104°23'04.950"W	2.56	
10483.00	87.330	181.710	6448.06	3993.81	-3453.45	2047.68	40°21'09.865"N	104°23'05.004"W	4.04	
10578.00	88.550	183.590	6451.47	4078.06	-3548.28	2043.29	40°21'08.928"N	104°23'05.060"W	2.36	
10673.00	90.400	183.940	6452.34	4161.49	-3643.07	2037.05	40°21'07.991"N	104°23'05.141"W	1.98	
10767.00	90.250	182.770	6451.81	4244.37	-3736.90	2031.55	40°21'07.064"N	104°23'05.212"W	1.25	
10862.00	89.660	182.160	6451.88	4328.82	-3831.82	2027.46	40°21'06.126"N	104°23'05.265"W	0.89	
10956.00	88.820	181.570	6453.13	4412.82	-3925.76	2024.40	40°21'05.198"N	104°23'05.305"W	1.09	
11051.00	88.000	181.930	6455.77	4497.78	-4020.67	2021.50	40°21'04.260"N	104°23'05.342"W	0.94	
11145.00	86.620	181.310	6460.18	4581.87	-4114.53	2018.85	40°21'03.333"N	104°23'05.377"W	1.61	
11240.00	90.980	185.210	6462.17	4665.66	-4209.32	2013.45	40°21'02.396"N	104°23'05.446"W	6.16	
11310.00	90.860	185.080	6461.04	4726.31	-4279.02	2007.17	40°21'01.707"N	104°23'05.528"W	0.25	Last BHI Surveys
11360.00	90.860	185.080	6460.29	4769.66	-4328.82	2002.74	40°21'01.215"N	104°23'05.585"W	0.00	Projection to Bit



Actual Wellpath Report

STATE NORTH PLATTE K-O-36HC ST01 AWP

Page 4 of 5



REFERENCE WELLPATH IDENTIFICATION

Operator	BONANZA CREEK OIL COMPANY	Slot	SLOT#01 STATE NORTH PLATTE K-O-36HC (350'FNL & 520'FWL,SEC.36)
Area	COLORADO	Well	STATE NORTH PLATTE K-O-36HC ST01
Field	WELD COUNTY	Wellbore	STATE NORTH PLATTE K-O-36HC ST01 AWB
Facility	SEC.36-T5N-R63W	Sidetrack from	STATE NORTH PLATTE K-O-36HC AWB at 7484.00 MD

TARGETS

Name	MD [ft]	TVD [ft]	North [ft]	East [ft]	Grid East [US ft]	Grid North [US ft]	Latitude	Longitude	Shape
STATE NORTH PLATTE K-O-36HC SECTION LINES		0.00	0.00	0.00	3308733.91	1376726.04	40°21'43.992"N	104°23'31.452"W	polygon
STATE NORTH PLATTE K-O-36HC BHL Rev-1 From Plat (470'FSL & 2580'FWL,SEC.35)		6417.72	-4338.84	2004.04	3310791.91	1372412.77	40°21'01.116"N	104°23'05.568"W	point
STATE NORTH PLATTE K-O-36HC HARDLINES (460' SETBACKS)		6417.72	0.00	0.00	3308733.91	1376726.04	40°21'43.992"N	104°23'31.452"W	polygon
STATE NORTH PLATTE K-O-36HC BHL Rev-2 From Plat (470'FSL & 2580'FWL,SEC.35)		6447.00	-4338.84	2004.04	3310791.91	1372412.77	40°21'01.116"N	104°23'05.568"W	point

WELLPATH COMPOSITION -

Ref Wellbore: STATE NORTH PLATTE K-O-36HC ST01 AWB Ref Wellpath: STATE NORTH PLATTE K-O-36HC ST01 AWP									
Start MD [ft]	End MD [ft]	Positional Uncertainty Model	Log Name/Comment				Wellbore		
0.00	7484.00	ISCWSA MWD, Rev. 2 (Standard)	3rd Party MWD Surveys provided by Bonanza Creek <92'-9569'>				STATE NORTH PLATTE K-O-36HC AWB		
7484.00	11310.00	NaviTrak (Standard)	BHI/Navitrak MWD Surveys<7544'-11310'>				STATE NORTH PLATTE K-O-36HC ST01 AWB		
11310.00	11360.00	Blind Drilling (std)	Projection to bit				STATE NORTH PLATTE K-O-36HC ST01 AWB		



Actual Wellpath Report

STATE NORTH PLATTE K-O-36HC ST01 AWP

Page 5 of 5



REFERENCE WELLPATH IDENTIFICATION			
Operator	BONANZA CREEK OIL COMPANY	Slot	SLOT#01 STATE NORTH PLATTE K-O-36HC (350'FNL & 520'FWL,SEC.36)
Area	COLORADO	Well	STATE NORTH PLATTE K-O-36HC ST01
Field	WELD COUNTY	Wellbore	STATE NORTH PLATTE K-O-36HC ST01 AWP
Facility	SEC.36-T5N-R63W	Sidetrack from	STATE NORTH PLATTE K-O-36HC AWP at 7484.00 MD

WELLPATH COMMENTS				
MD [ft]	Inclination [°]	Azimuth [°]	TVD [ft]	Comment
7484.00	91.000	178.900	6466.76	Tie on to 3rd Party Surveys
7544.00	90.060	177.550	6466.21	First BHI Surveys
11310.00	90.860	185.080	6461.04	Last BHI Surveys
11360.00	90.860	185.080	6460.29	Projection to Bit