



NABORS

**COMPLETION
& PRODUCTION
SERVICES CO.**

**MICRO
LOG**

Company MULL DRILLING COMPANY, INC. Well APC - WAYNE #1-35 Field WILDCAT County CHEYENNE State COLORADO		Company MULL DRILLING COMPANY, INC. Well APC - WAYNE #1-35 Field WILDCAT County CHEYENNE State COLORADO	
Location: API # : 05-017-07775-00 1686' FSL & 1056' FEL		Other Services CDL/CNL/PE DIL/SONIC	
Permanent Datum GROUND LEVEL Elevation 4255 Log Measured From KELLY BUSHING 11' A.G.L. Drilling Measured From KELLY BUSHING		Elevation K.B. 4266 D.F. 4264 G.L. 4255	
Date	12/10/13		
Run Number	TWO		
Depth Driller	5472		
Depth Logger	5482		
Bottom Logged Interval	5466		
Top Log Interval	3600		
Casing Driller	8 5/8" @ 352'		
Casing Logger	350		
Bit Size	7 7/8"		
Type Fluid in Hole	CHEMICAL MUD	CHLORIDES 3,100 PPM	
Density / Viscosity	9.1/55		
pH / Fluid Loss	10.0/6.4		
Source of Sample	FLOWLINE		
Rin @ Meas. Temp	.950 @ 40F		
Rinf @ Meas. Temp	.713 @ 40F		
Rinc @ Meas. Temp	1.14 @ 40F		
Source of Rinf / Rinc	MEASUREMENT		
Rin @ BHT	.295 @ 129F		
Time Circulation Stopped	5.5 HOURS		
Time Logger on Bottom	6:15 P.M.		
Maximum Recorded Temperature	129F		
Equipment Number	4854		
Location	HAYS, KANSAS		
Recorded By	JEFF LUEBBERS		
Witnessed By	PHIL ASKEY		

<<< Fold Here >>>

All interpretations are opinions based on inferences from electrical or other measurements and we cannot and do not guarantee the accuracy or correctness of any interpretation, and we shall not, except in the case of gross or willful negligence on our part, be liable or responsible for any loss, costs, damages, or expenses incurred or sustained by anyone resulting from any interpretation made by any of our officers, agents or employees. These interpretations are also subject to our general terms and conditions set out in our current Price Schedule.

Comments

THANK YOU FOR USING "NABORS" HAYS, KANSAS (785) 628 6395
DIRECTIONS

CHEYENNE WELLS, CO., 13S. ON HWY 385 TO "RD. C", 5 1/2W. TO RADIO TOWER, 1 1/2S. ON LEASE RD., W. INTO

Database File:

011824pe.db

Dataset Pathname:

pass8.1

Presentation Format:

micro

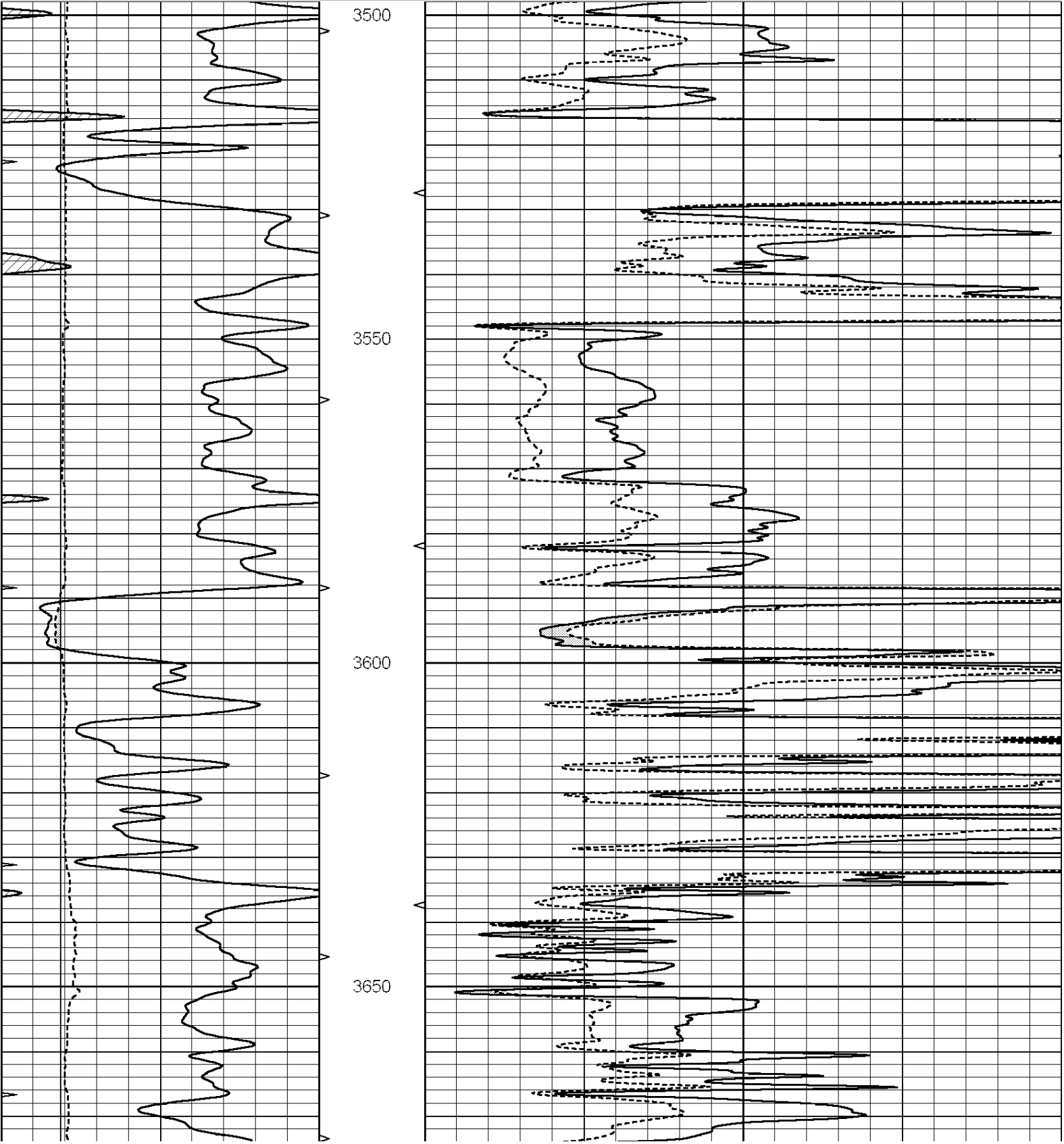
Dataset Creation:

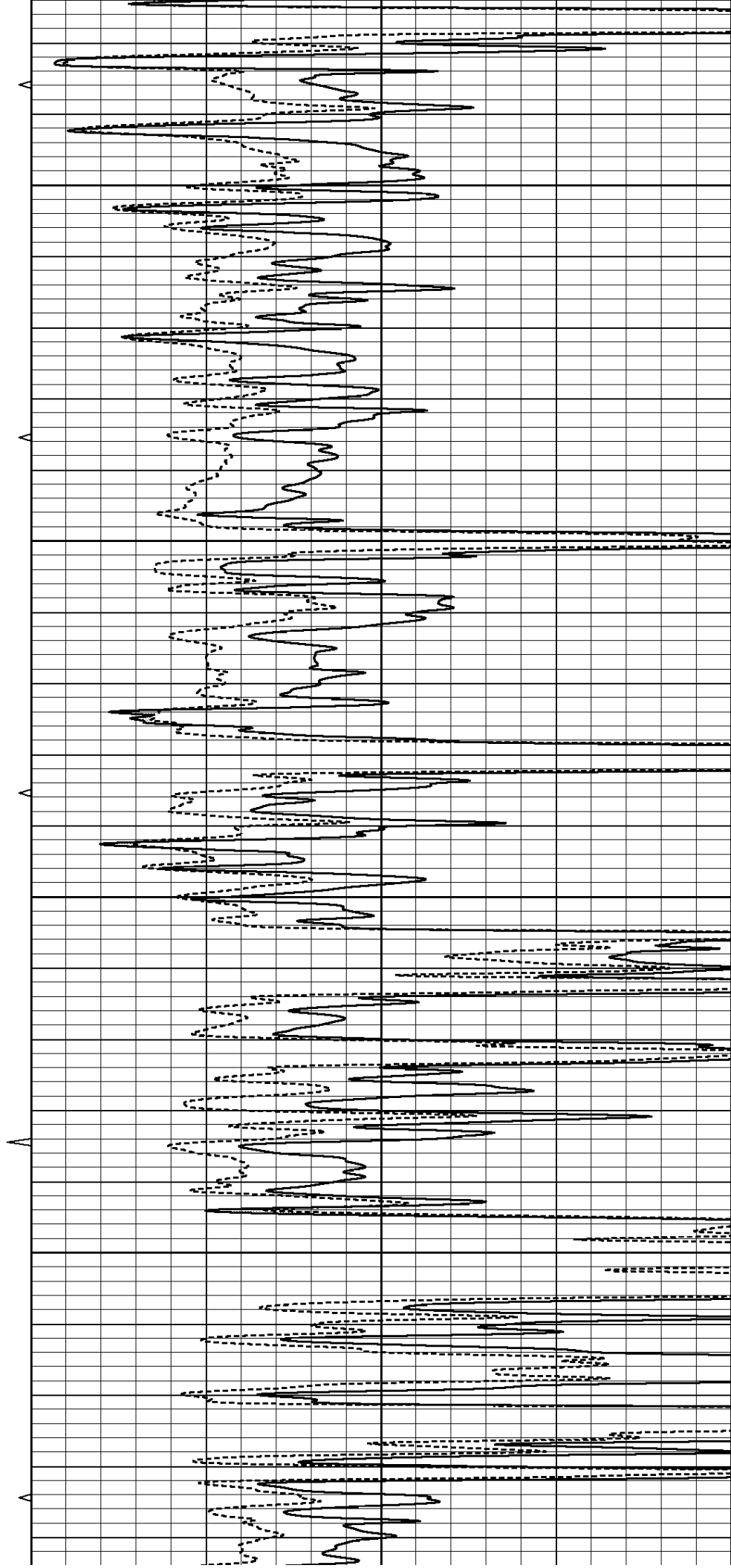
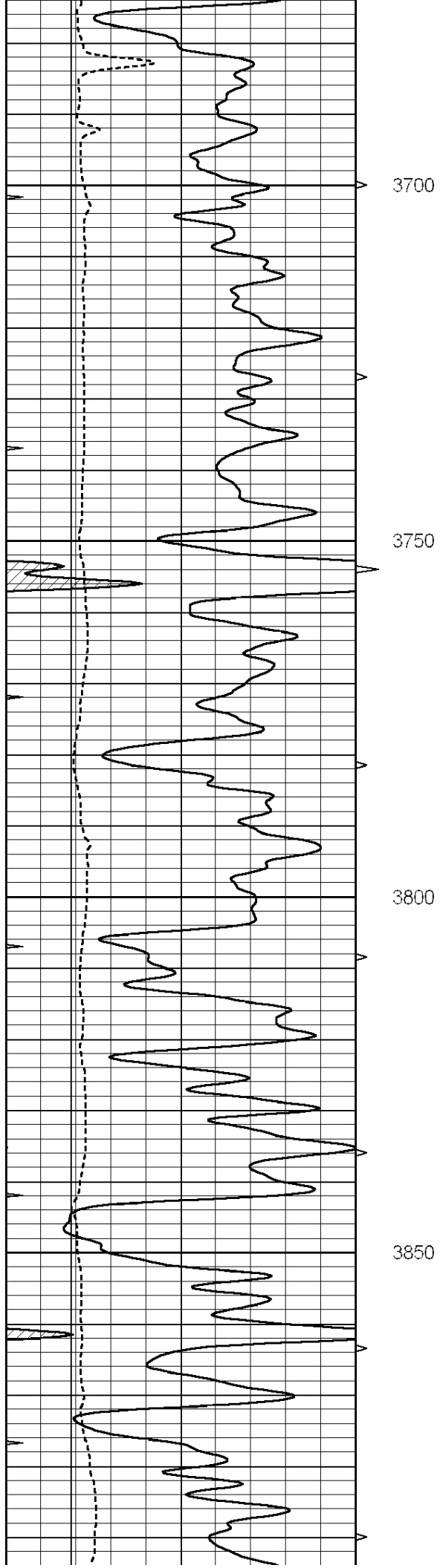
Tue Dec 10 23:19:50 2013 by Calc SOC 120430

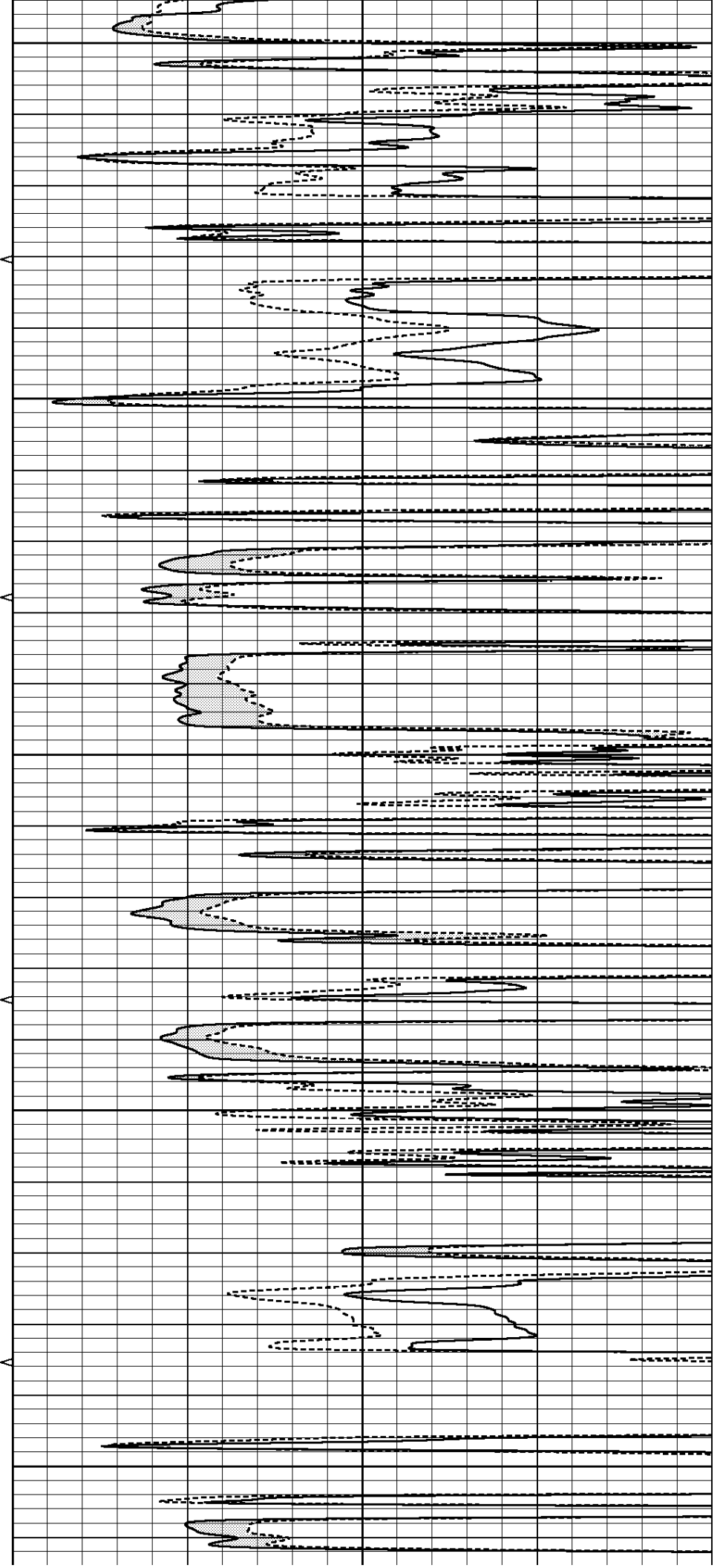
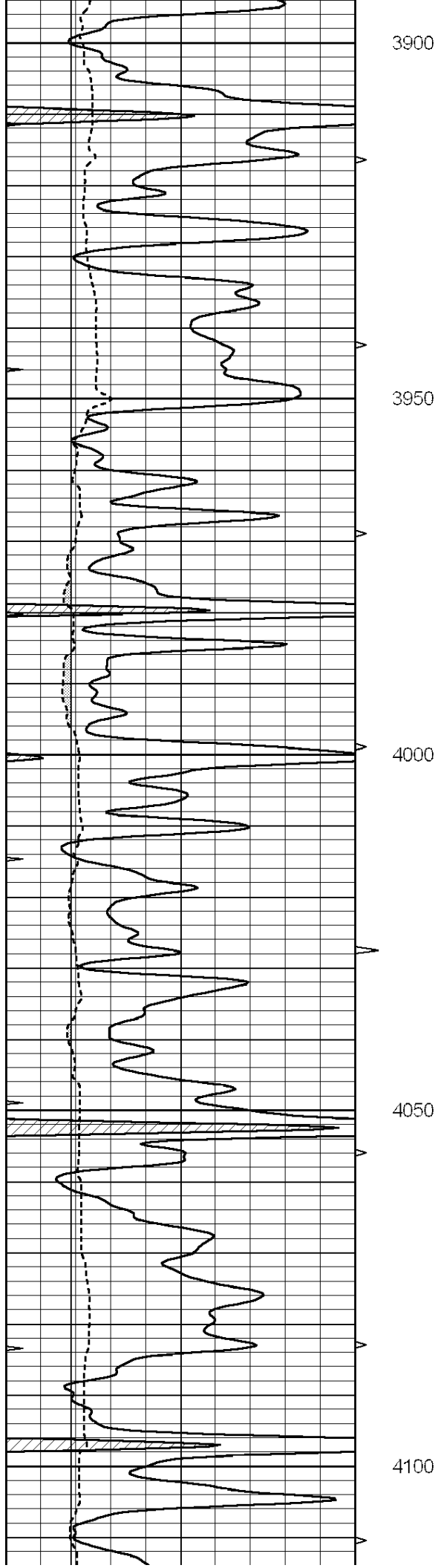
Charted by:

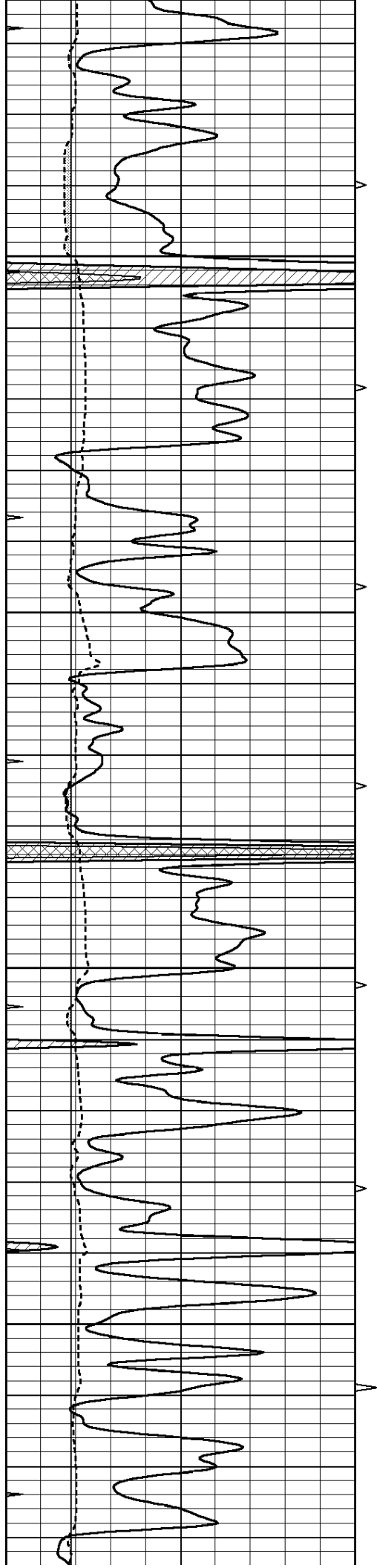
Depth in Feet scaled 1:240

0	GAMMA RAY (GAPI)	150	ABHV	0	MEL1.5 (Ohm-m)	40
6	CALIPER (in)	16	10 (ft3)	0 0	MEL2.0 (Ohm-m)	40
0	MINMK	20	TBHV			
			0 (ft3)	10		







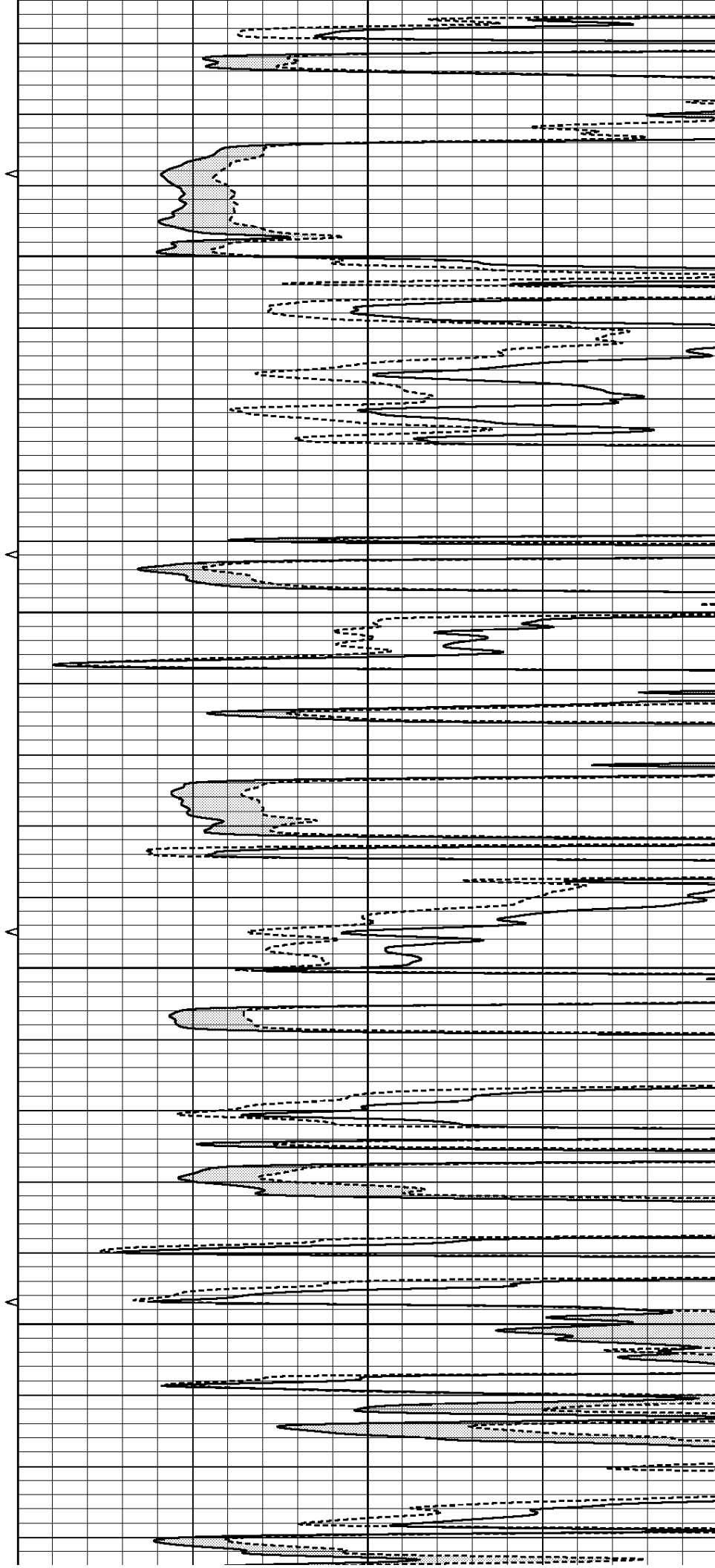


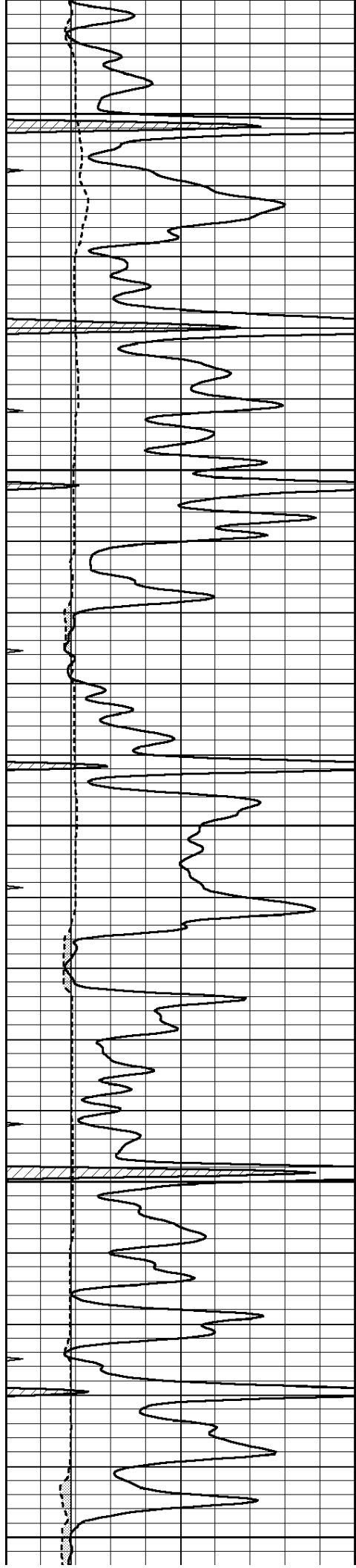
4150

4200

4250

4300





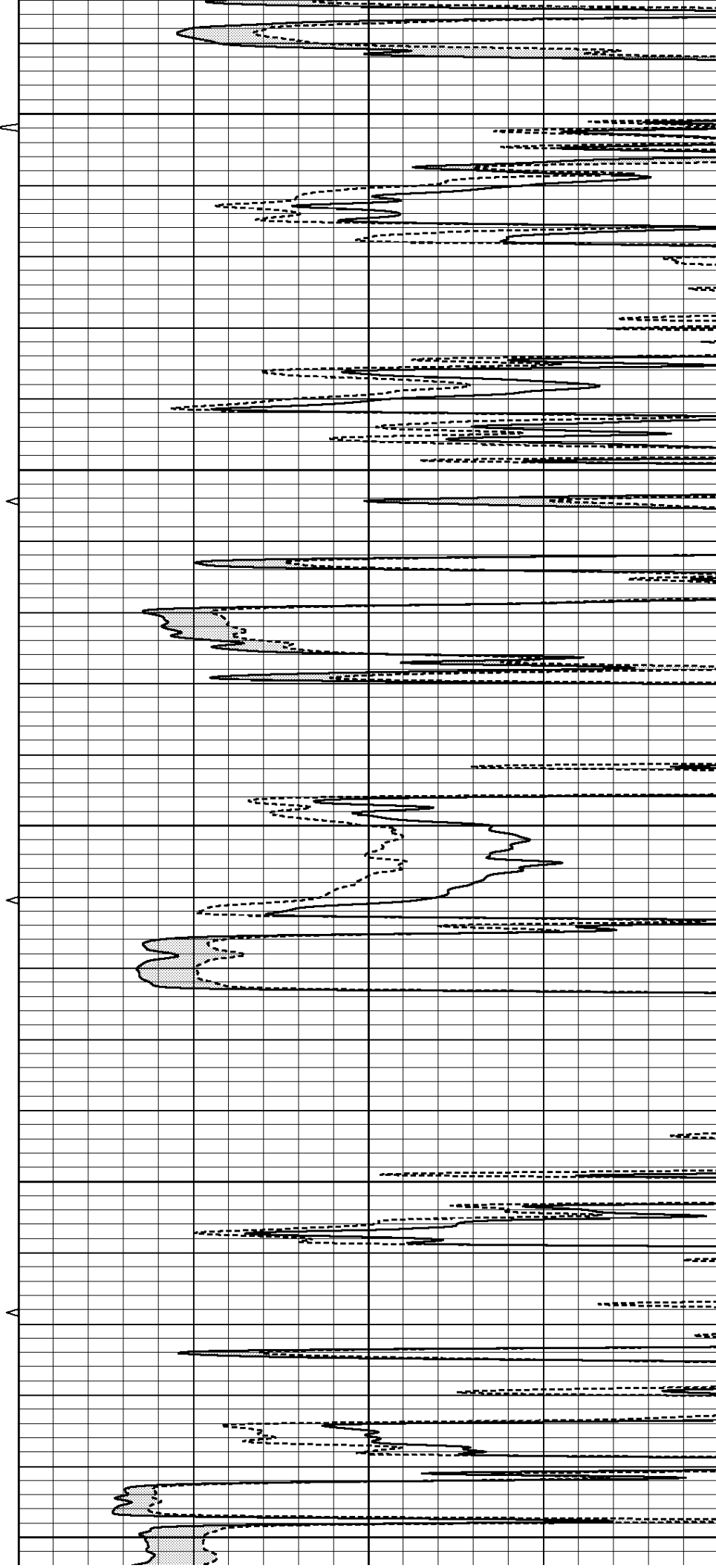
4350

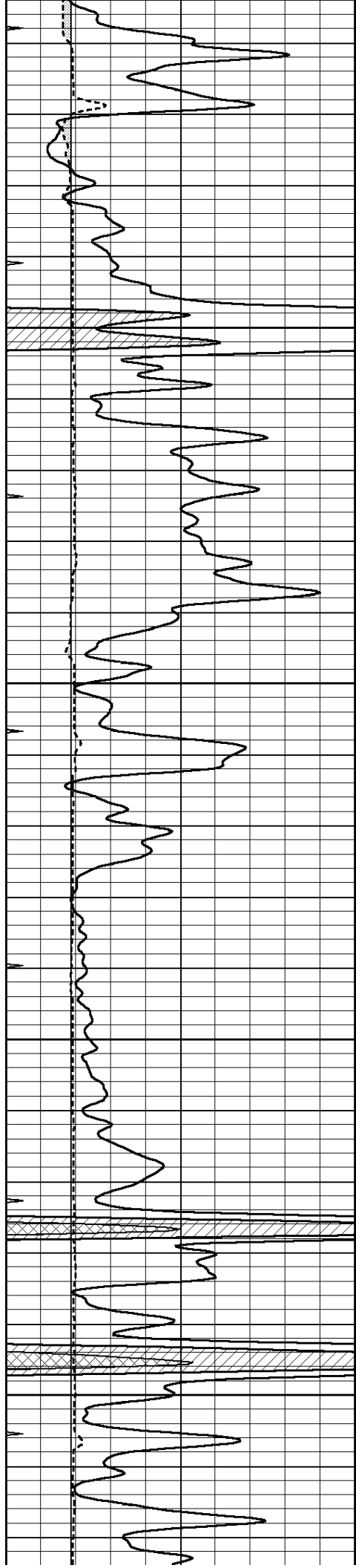
4400

4450

4500

4550



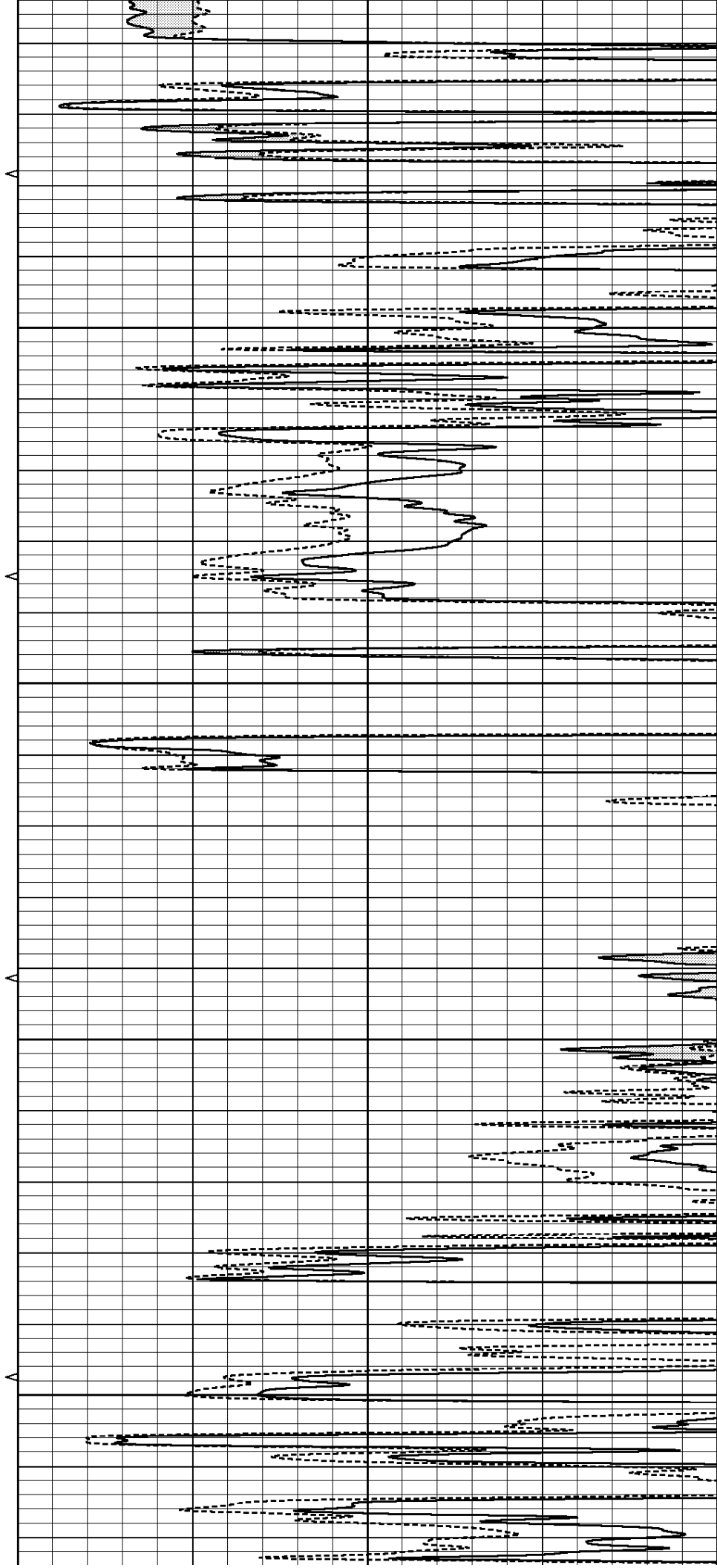


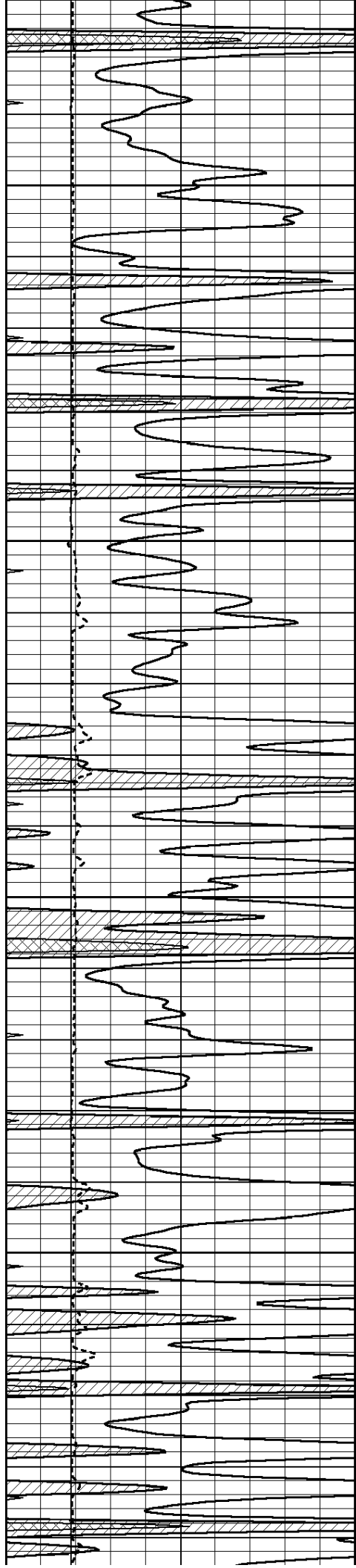
4600

4650

4700

4750



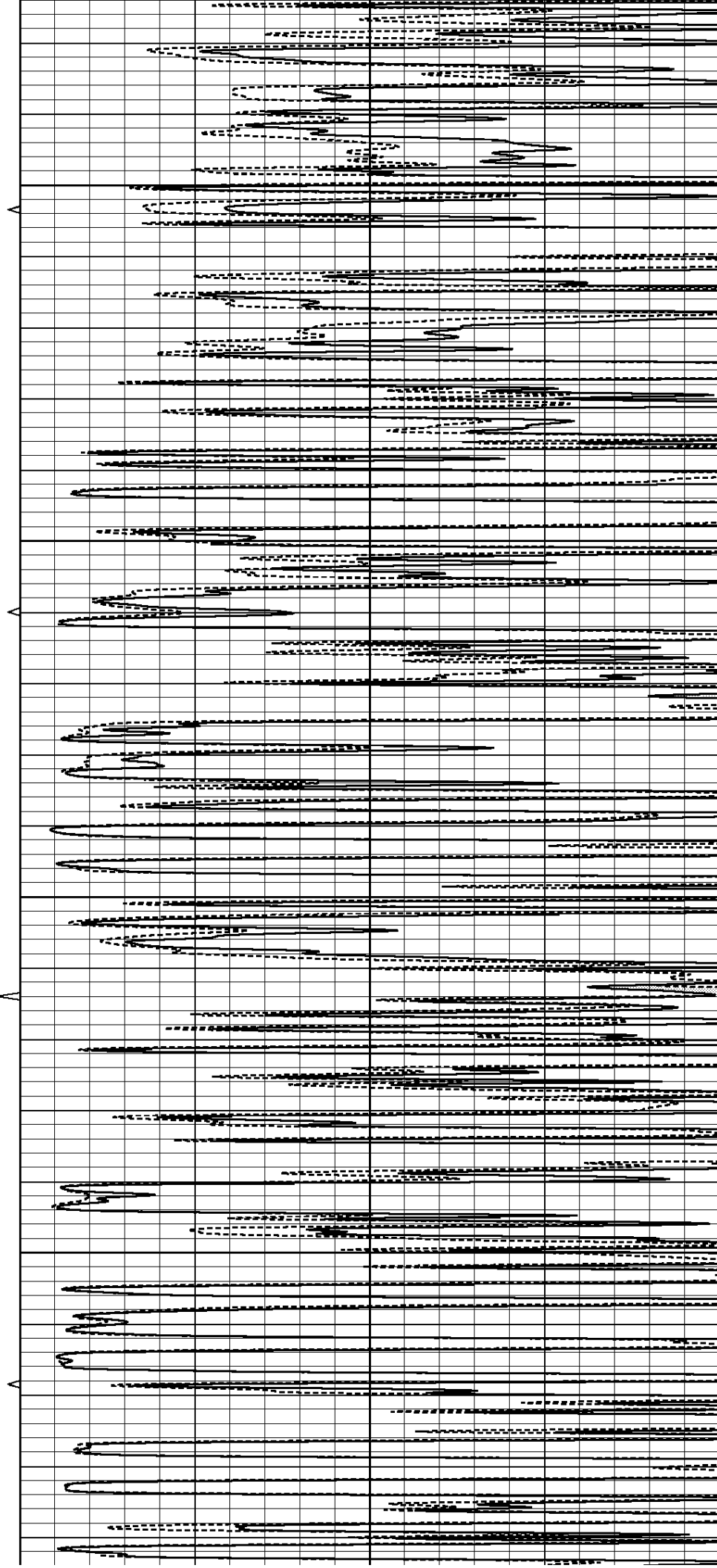


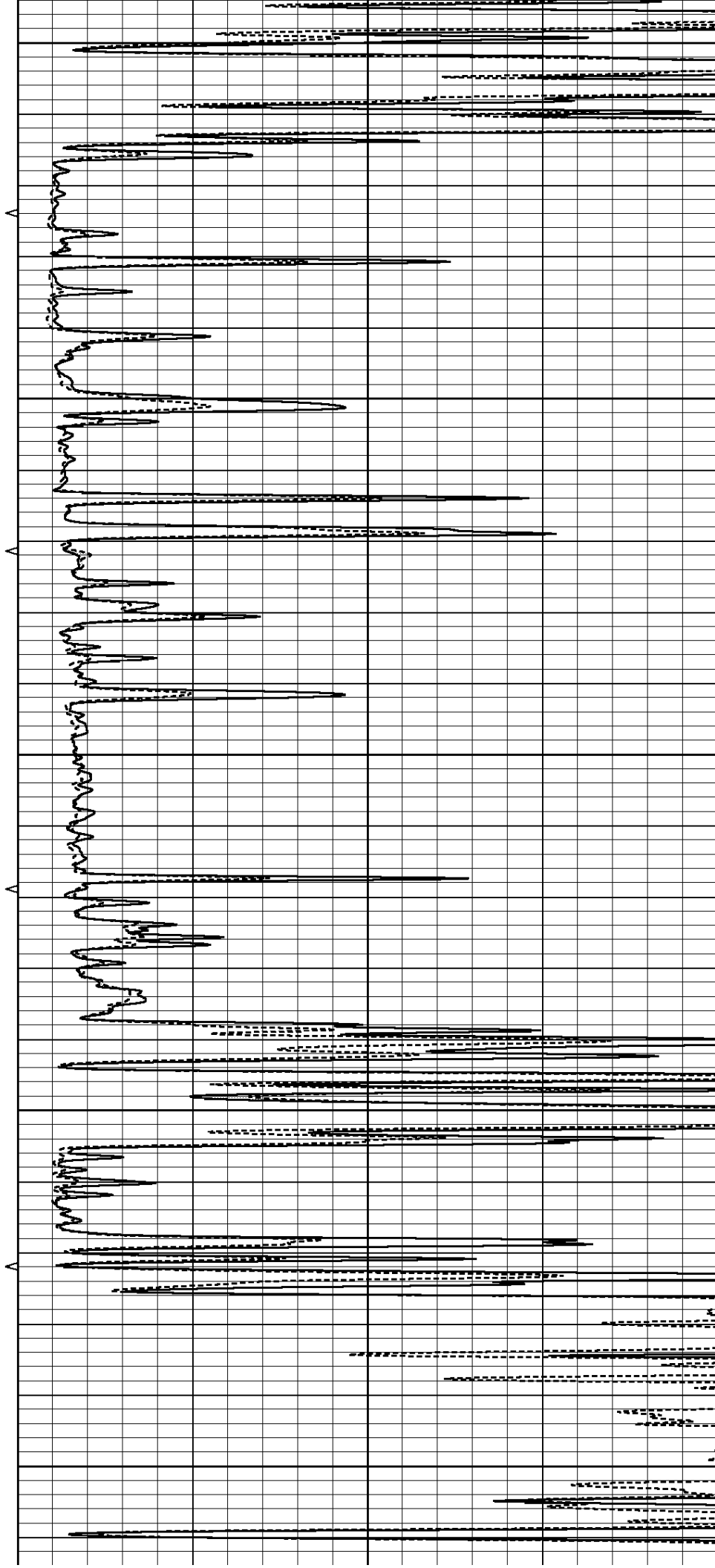
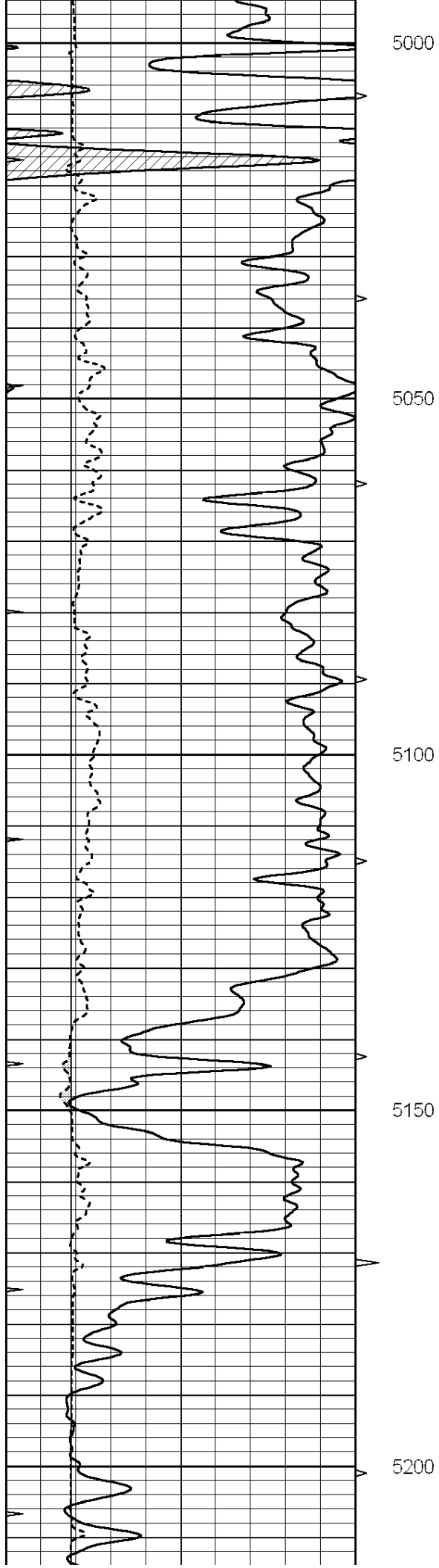
4800

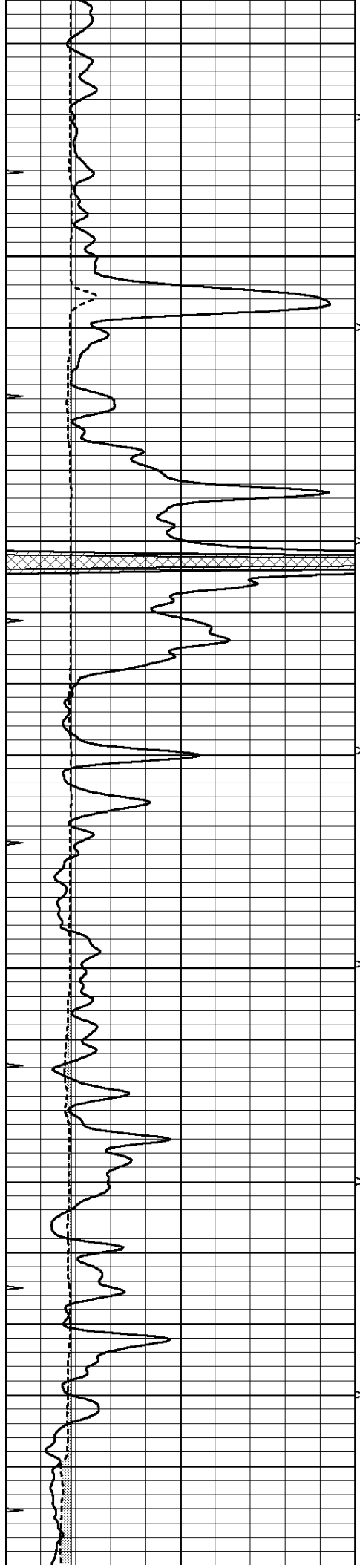
4850

4900

4950







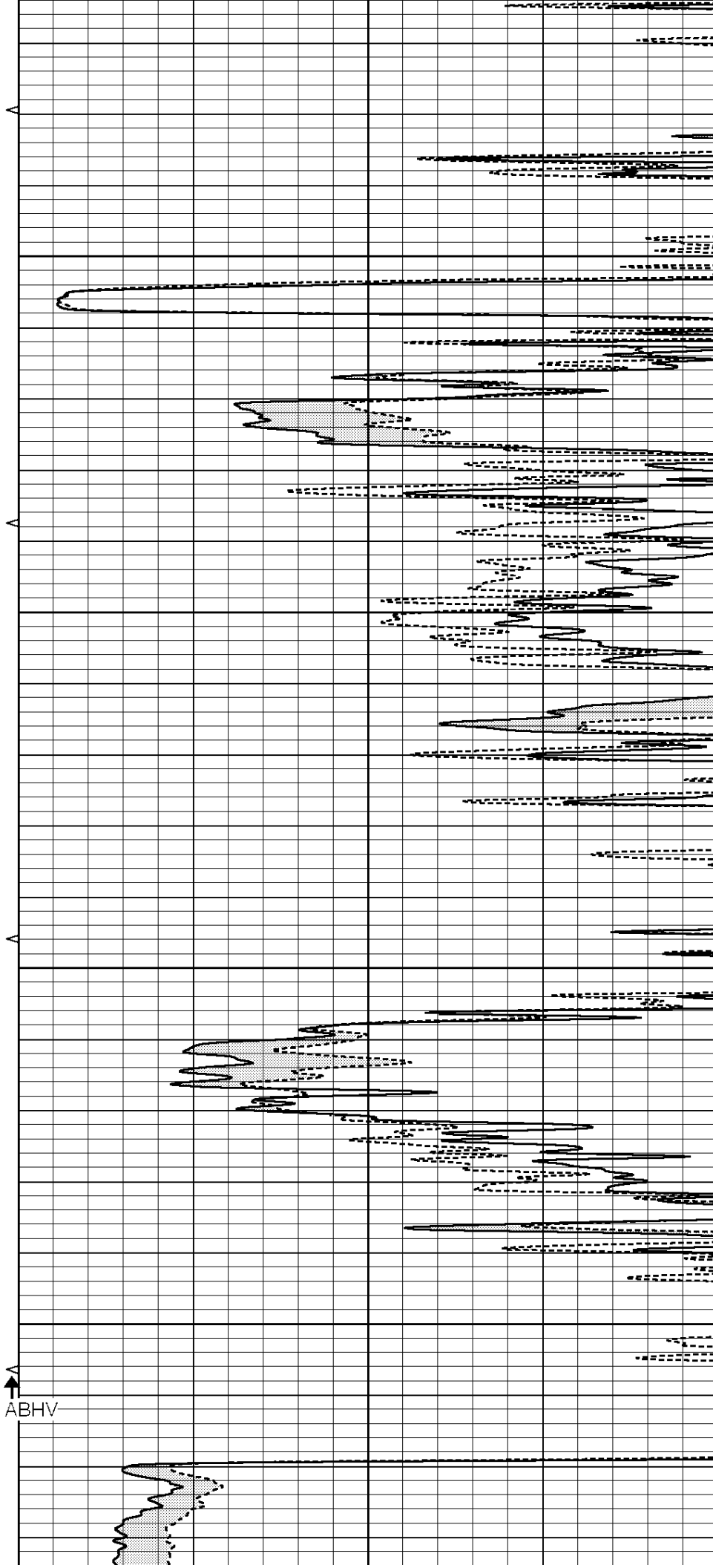
5250

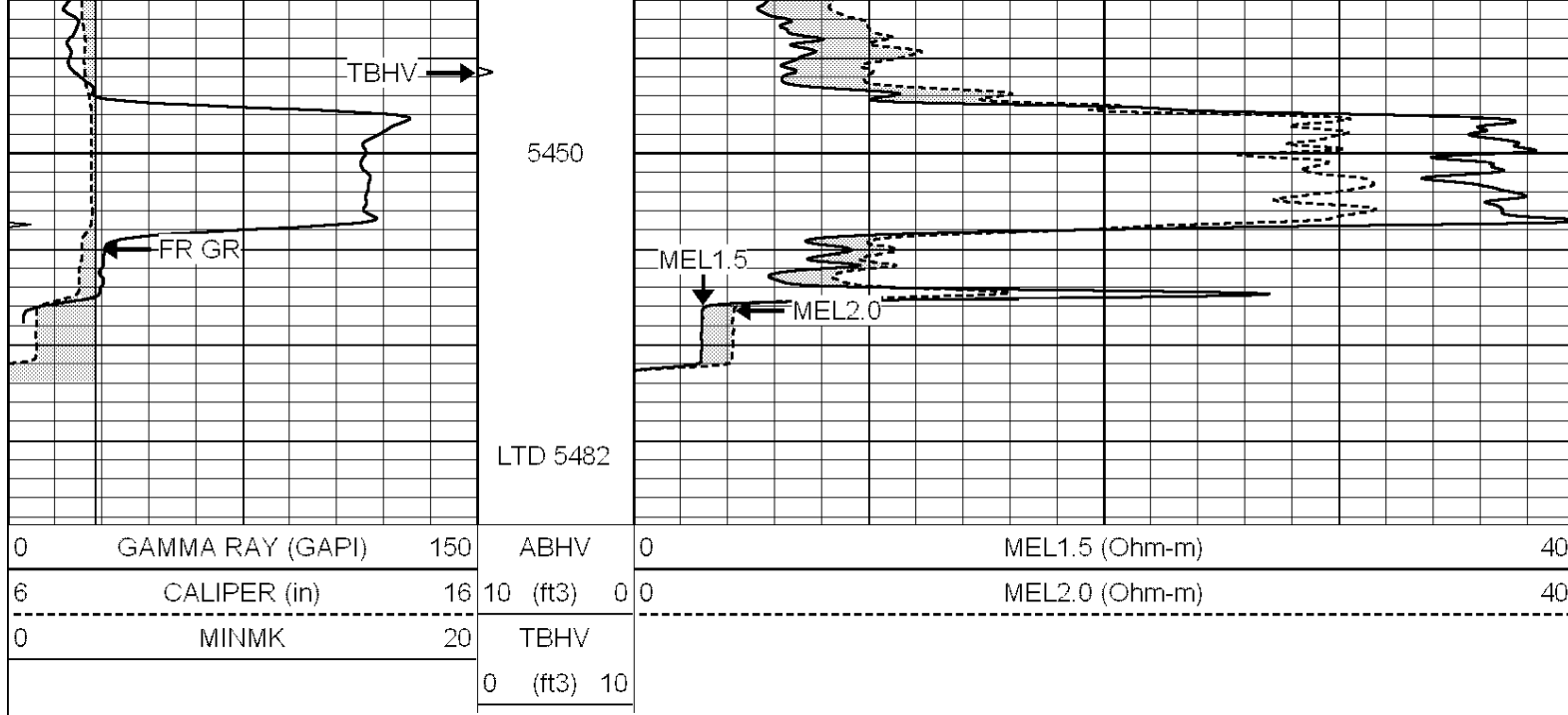
5300

5350

5400

5.5" ABHV

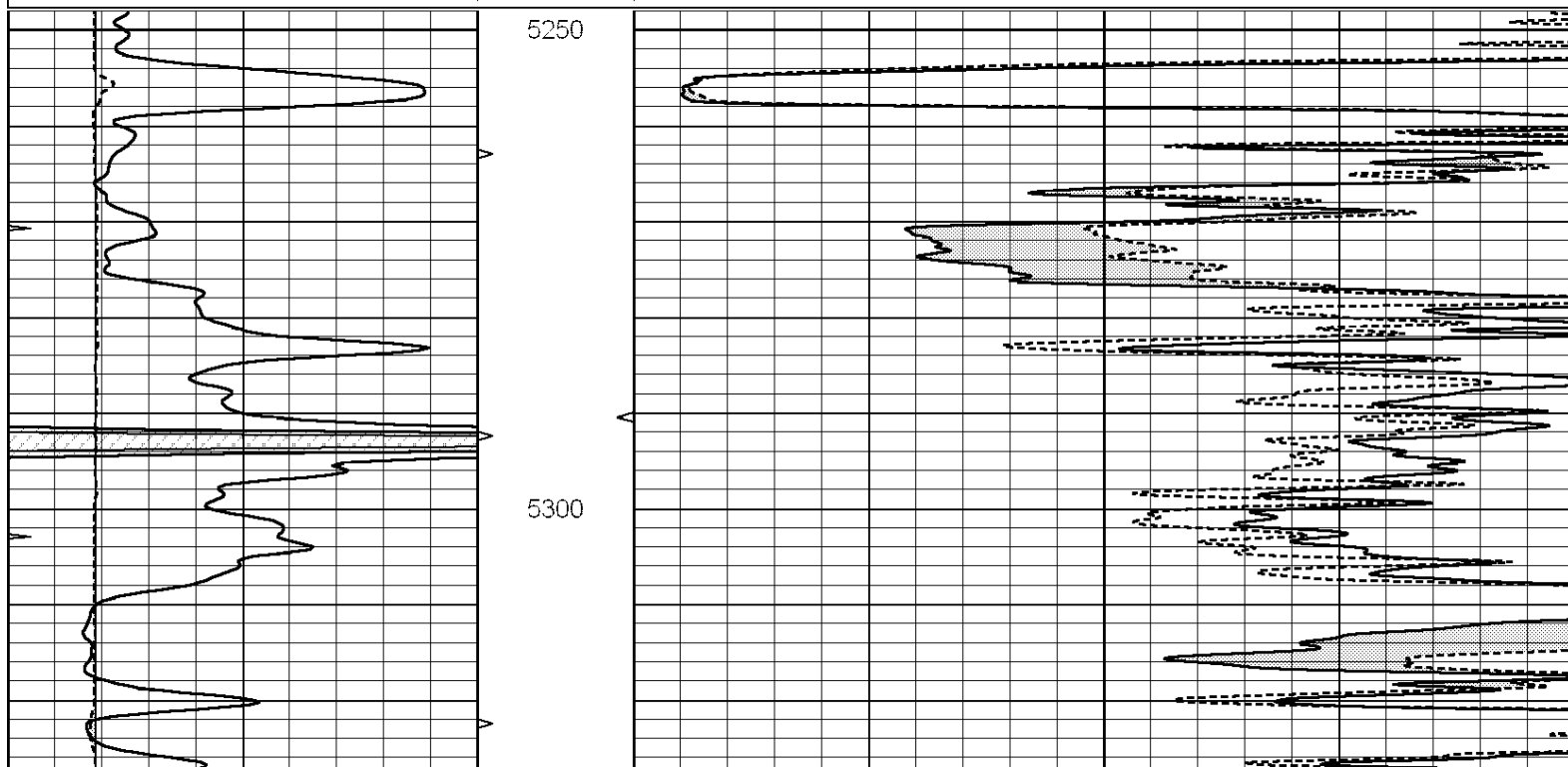


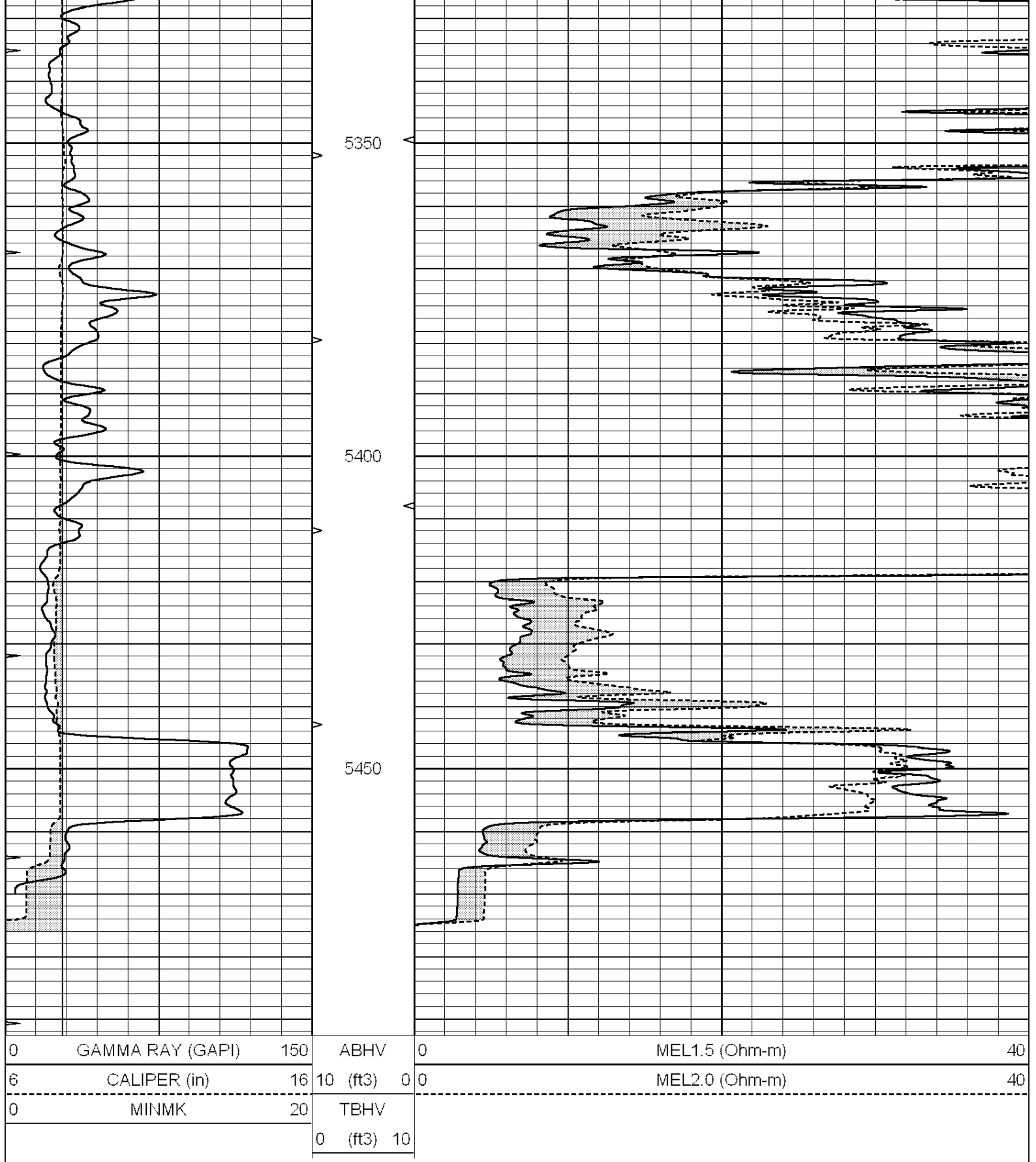


REPEAT SECTION

Database File: 011824pe.db
 Dataset Pathname: pass7.3
 Presentation Format: micro
 Dataset Creation: Tue Dec 10 23:37:54 2013
 Charted by: Depth in Feet scaled 1:240

0	GAMMA RAY (GAPI)	150	ABHV	0	MEL1.5 (Ohm-m)	40
6	CALIPER (in)	16	10 (ft3)	0	MEL2.0 (Ohm-m)	40
0	MINMK	20	TBHV			
			0 (ft3)	10		





Calibration Report

Database File: 011824pe.db
Dataset Pathname: pass8.1
Dataset Creation: Tue Dec 10 23:19:50 2013 by Calc SOC 120430

MICRO Calibration Report

Serial Number: 070910
Tool Model: ProbeN

Tool Model: Performed:	Proben Mon Dec 09 04:32:42 2013	
Caliper Calibration:	Gain=4.208	Offset=1.270
References	Low Cal 7.800	High Cal 15.000
Readings	1.552	3.263
1.5" Calibration:	Gain=32.000	Offset=-0.400
References	Low Cal 0.000	High Cal 20.000
Readings	0.001	1.229
2" Calibration:	Gain=44.000	Offset=-0.500
References	Low Cal 0.000	High Cal 20.000
Readings	0.004	1.057
Gamma Ray Calibration Report		
Serial Number:	070558	
Tool Model:	OPEN_GR	
Performed:	Mon Dec 09 04:32:48 2013	
Calibrator Value:	1.0	GAPI
Background Reading:	0.0	cps
Calibrator Reading:	1.0	cps
Sensitivity:	0.2200	GAPI/cps