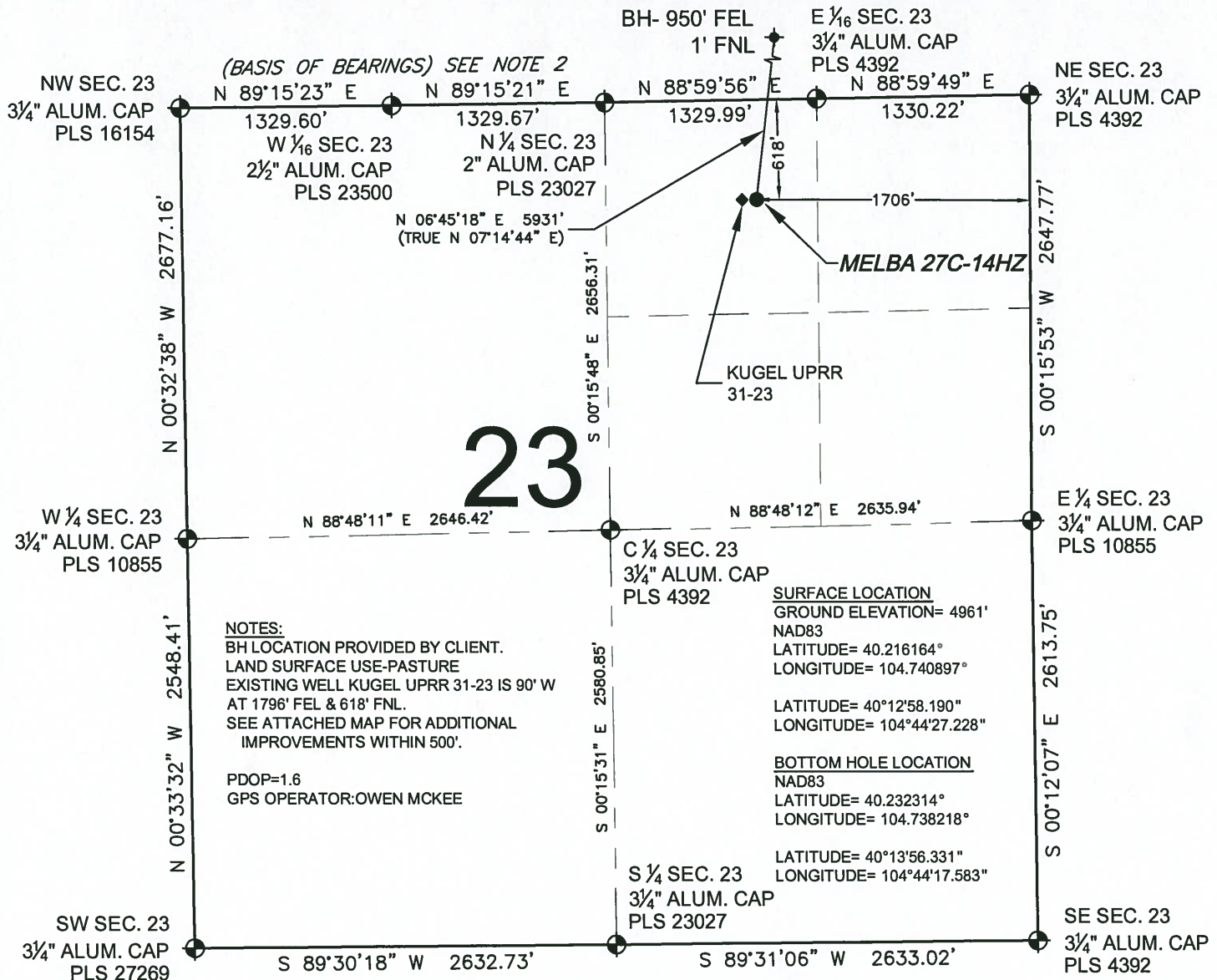


# WELL LOCATION CERTIFICATE: MELBA 27C-14HZ

SECTION 23, TOWNSHIP 3 NORTH, RANGE 66 WEST, 6TH P.M.



NOTES:  
BH LOCATION PROVIDED BY CLIENT.  
LAND SURFACE USE-PASTURE  
EXISTING WELL KUGEL UPRR 31-23 IS 90' W  
AT 1796' FEL & 618' FNL.  
SEE ATTACHED MAP FOR ADDITIONAL  
IMPROVEMENTS WITHIN 500'.

PDOP=1.6  
GPS OPERATOR:OWEN MCKEE

SURFACE LOCATION  
GROUND ELEVATION= 4961'  
NAD83  
LATITUDE= 40.216164°  
LONGITUDE= 104.740897°

LATITUDE= 40°12'58.190"  
LONGITUDE= 104°44'27.228"

BOTTOM HOLE LOCATION  
NAD83  
LATITUDE= 40.232314°  
LONGITUDE= 104.738218°

LATITUDE= 40°13'56.331"  
LONGITUDE= 104°44'17.583"

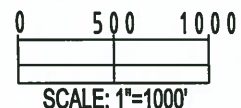
## LEGEND

- = EXISTING MONUMENT    ♦ = BOTTOM HOLE  
● = PROPOSED WELL       ♦ = EXISTING WELL  
BH = BOTTOM HOLE

## NOTES:

- THIS FIELD SURVEY CONFORMS TO THE MINIMUM STANDARDS SET BY THE C.O.G.C.C., RULE NO. 215
- BEARINGS AND DISTANCE SHOWN HEREON ARE GRID AND BASED ON THE COLORADO STATE PLANE COORDINATE SYSTEM, NAD 83/2011 BETWEEN MONUMENTS AS LABELED HEREON AND ELEVATIONS SHOWN ARE NAVD 88, AS DERIVED BY GPS OBSERVATIONS.
- GRID DISTANCES ARE SHOWN, AS MEASURED IN THE FIELD, WITH TIES TO WELLS MEASURED PERPENDICULAR TO SECTION LINES.

I, BRADLEY L. LAMAN, A LICENSED PROFESSIONAL LAND SURVEYOR IN THE STATE OF COLORADO DO HEREBY CERTIFY TO **KERR-MCGEE OIL & GAS ONSHORE LP**, THAT THE SURVEY AND WELL LOCATION CERTIFICATE SHOWN HEREON WERE DONE BY ME OR UNDER MY DIRECT SUPERVISION AND THAT THE DRAWING SHOWN HEREON ACCURATELY DEPICTS THE PROPOSED LOCATION OF THE WELL. THIS CERTIFICATE DOES NOT REPRESENT A LAND SURVEY PLAT OR IMPROVEMENT SURVEY PLAT AS DEFINED BY C.R.S. 38-51-102 AND CANNOT BE RELIED UPON TO DETERMINE OWNERSHIP.



SHEET 1 OF 2

BRADLEY L. LAMAN, PLS 38345  
COLORADO LICENSED PROFESSIONAL LAND SURVEYOR  
FOR AND ON BEHALF OF P.F.S., LLC

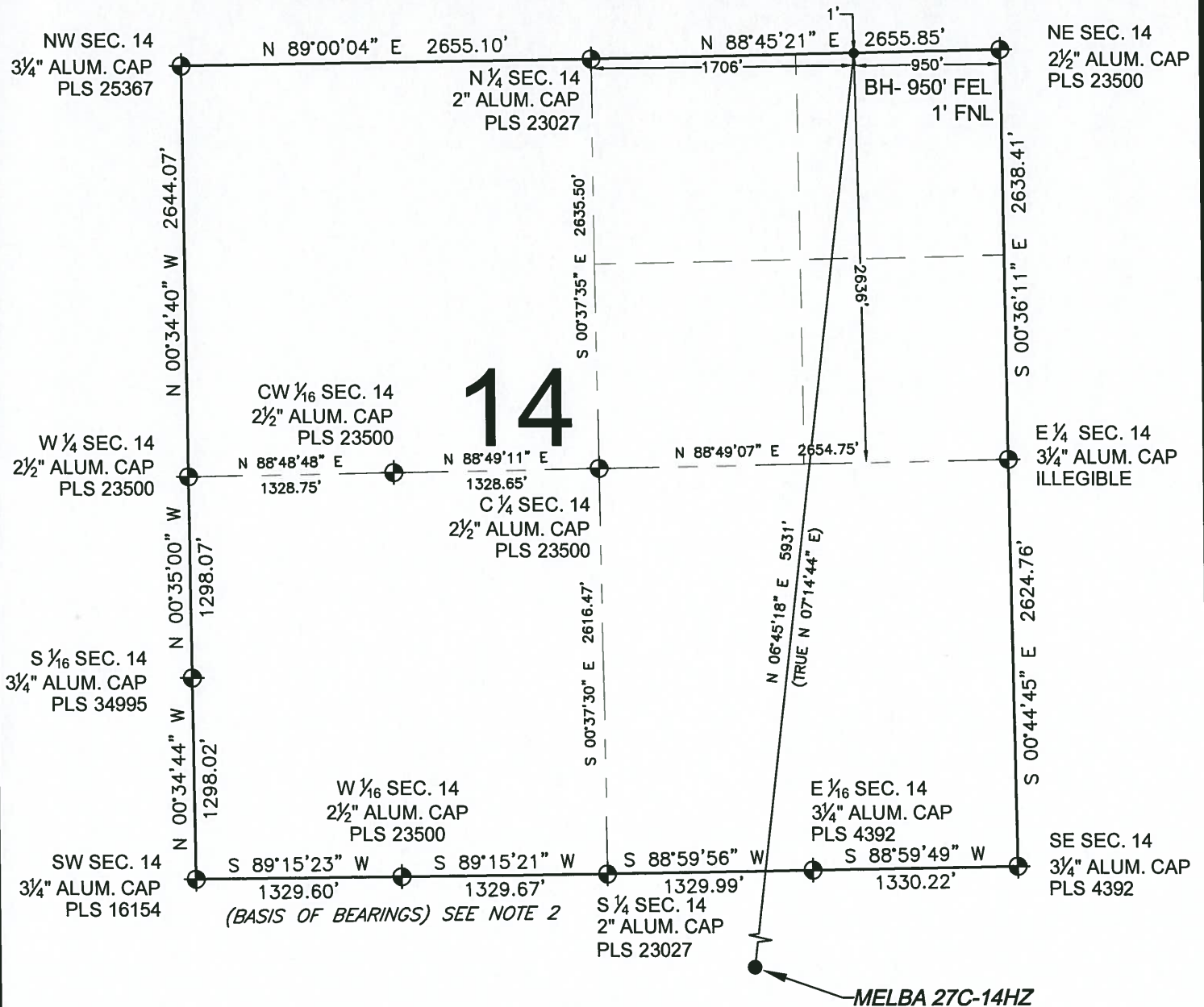
NOTICE: ACCORDING TO COLORADO LAW YOU MUST COMMENCE ANY LEGAL ACTION BASED UPON ANY DEFECT IN THIS SURVEY WITHIN THREE YEARS AFTER YOU FIRST DISCOVER SUCH DEFECT. IN NO EVENT MAY ANY ACTION BASED UPON ANY DEFECT IN THIS SURVEY BE COMMENCED MORE THAN TEN YEARS FROM THIS SAID DATE OF THIS CERTIFICATION SHOWN HEREON.



PREPARED BY:	FIELD DATE: 10-02-13	SURFACE LOCATION: NW 1/4 NE 1/4, SEC. 23, T3N, R66W, 6TH P.M.
	DRAWING DATE: 10-04-13	
BY: JLF	REV: JAH	WELD COUNTY, COLORADO

# WELL LOCATION CERTIFICATE: MELBA 27C-14HZ

SECTION 14, TOWNSHIP 3 NORTH, RANGE 66 WEST, 6TH P.M.

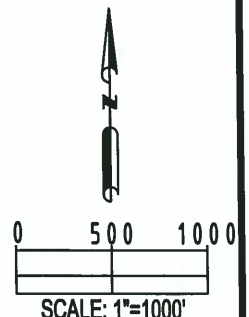


## LEGEND

- ◉ = EXISTING MONUMENT
- = PROPOSED WELL
- ◈ = EXISTING WELL
- BH = BOTTOM HOLE



BRADLEY L. LAMAN, PLS 38345  
COLORADO LICENSED PROFESSIONAL LAND SURVEYOR  
FOR AND ON BEHALF OF P.F.S., LLC



SHEET 2 OF 2

<b>PREPARED BY:</b>  Petroleum Field Services, LLC 7535 Hilltop Circle Denver, CO 80221	<b>FIELD DATE:</b> 10-02-13  <b>DRAWING DATE:</b> 10-04-13  <b>BY:</b> JLF <b>REV:</b> JAH	<b>SURFACE LOCATION:</b> NW 1/4 NE 1/4, SEC. 23, T3N, R66W, 6TH P.M. WELD COUNTY, COLORADO
---	---	---

NOTICE: ACCORDING TO COLORADO LAW YOU MUST COMMENCE ANY LEGAL ACTION BASED UPON ANY DEFECT IN THIS SURVEY WITHIN THREE YEARS AFTER YOU FIRST DISCOVER SUCH DEFECT. IN NO EVENT MAY ANY ACTION BASED UPON ANY DEFECT IN THIS SURVEY BE COMMENCED MORE THAN TEN YEARS FROM THIS SAID DATE OF THIS CERTIFICATION SHOWN HEREON.