



Kerr-McGee Oil & Gas Onshore LP

A subsidiary of Anadarko Petroleum Corporation

1099 18th Street
Denver, CO 80202
720-929-6000

December 27, 2013

Department of Natural Resources
Oil and Gas Conservation Commission
The Chancery Building
1120 Lincoln St., Suite 801
Denver, CO 80203

Re: **30 Day Certification Letter - 318A.e**
MELBA 2N-14HZ
Township 3 North, Range 66 West, Section 23: NW/4NE/4
Unit Spacing: 03N-66W-11 SE/4SW/4, SW/4SE/4
03N-66W-14 W/2E/2, E/2W/2
03N-66W-23 NE/4NW/4, NW/4NE/4
Weld County, Colorado

Ladies/Gentlemen:

Kerr-McGee Oil and Gas Onshore LP ("KMG") hereby certifies to the Director that a thirty (30) day notice has been given by certified mail to all owners in the proposed wellbore spacing unit. We have not received any objections to such well location, proposed spacing unit, or additional producing formation. KMG hereby requests the Director to approve the boundary well.

If you have any questions or issues regarding this permit, please contact Cheryl Light at (720) 929-6461.

Very truly yours,

Kerr-McGee Oil and Gas Onshore LP

A handwritten signature in blue ink that reads 'RPowers'.

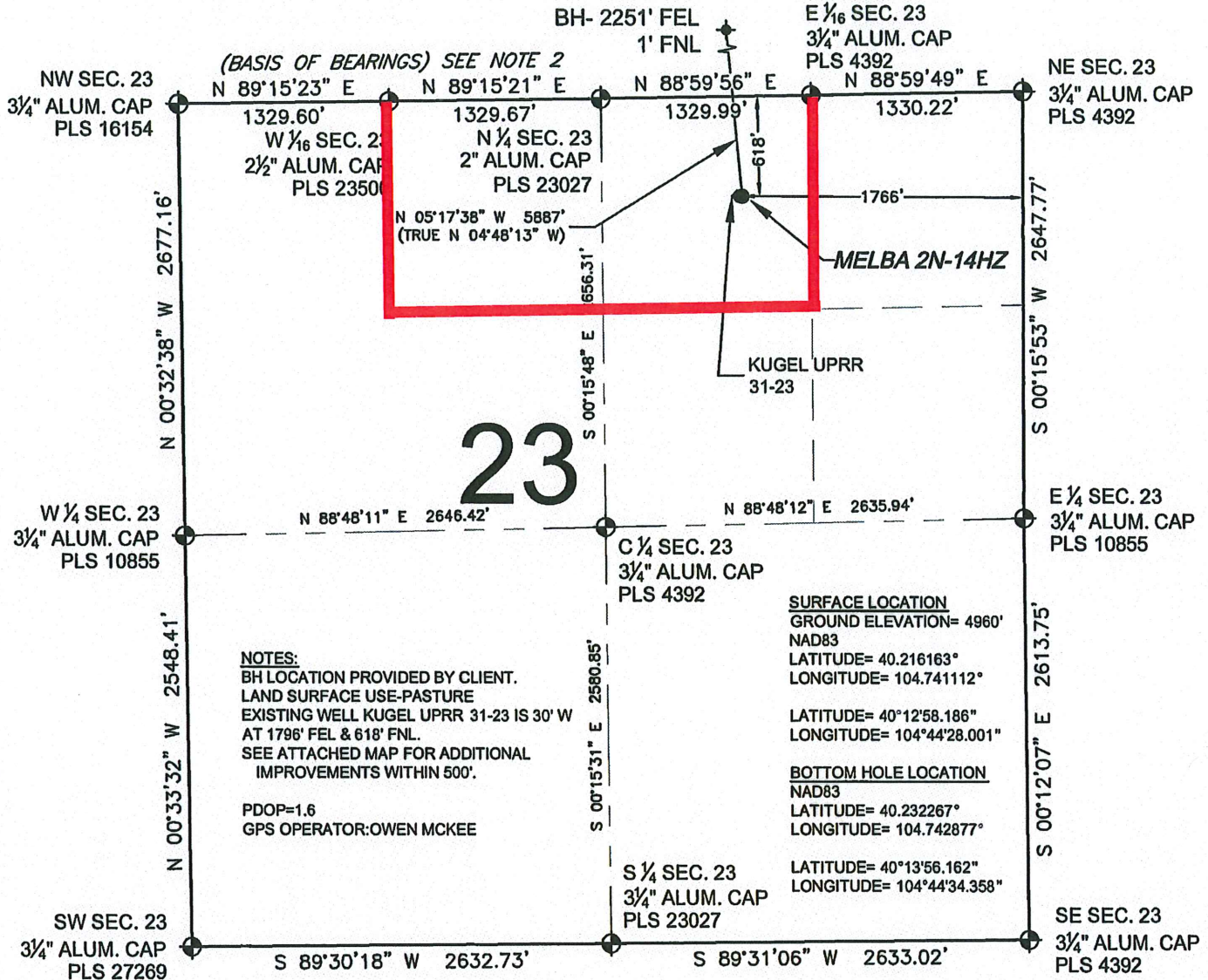
Ronett Powers
Regulatory Analyst II

Enclosure

PROPOSED SPACING UNIT

WELL LOCATION CERTIFICATE: MELBA 2N-14HZ

SECTION 23, TOWNSHIP 3 NORTH, RANGE 66 WEST, 6TH P.M.



WELL MELBA 2N-14HZ TO BE LOCATED 1766' FEL AND 618' FNL

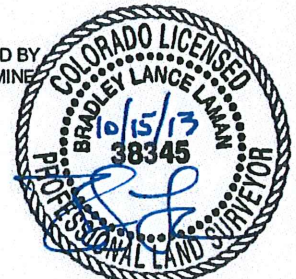
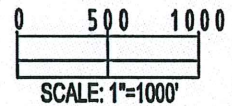
LEGEND

- ⊕ = EXISTING MONUMENT ⊕ = BOTTOM HOLE
- = PROPOSED WELL ◆ = EXISTING WELL
- BH = BOTTOM HOLE

NOTES:

- THIS FIELD SURVEY CONFORMS TO THE MINIMUM STANDARDS SET BY THE C.O.G.C.C., RULE NO. 215
- BEARINGS AND DISTANCE SHOWN HEREON ARE GRID AND BASED ON THE COLORADO STATE PLANE COORDINATE SYSTEM, NAD 83/2011 BETWEEN MONUMENTS AS LABELED HEREON AND ELEVATIONS SHOWN ARE NAVD 88, AS DERIVED BY GPS OBSERVATIONS.
- GRID DISTANCES ARE SHOWN, AS MEASURED IN THE FIELD, WITH TIES TO WELLS MEASURED PERPENDICULAR TO SECTION LINES.

I, BRADLEY L. LAMAN, A LICENSED PROFESSIONAL LAND SURVEYOR IN THE STATE OF COLORADO DO HEREBY CERTIFY TO KERR-MCGEE OIL & GAS ONSHORE LP, THAT THE SURVEY AND WELL LOCATION CERTIFICATE SHOWN HEREON WERE DONE BY ME OR UNDER MY DIRECT SUPERVISION AND THAT THE DRAWING SHOWN HEREON ACCURATELY DEPICTS THE PROPOSED LOCATION OF THE WELL. THIS CERTIFICATE DOES NOT REPRESENT A LAND SURVEY PLAT OR IMPROVEMENT SURVEY PLAT AS DEFINED BY C.R.S. 38-51-102 AND CANNOT BE RELIED UPON TO DETERMINE OWNERSHIP.



SHEET 1 OF 2

PREPARED BY:



FIELD DATE:
10-02-13
DRAWING DATE:
10-04-13
BY:
JLF
REV:
JAH

SURFACE LOCATION:
NW 1/4 NE 1/4,
SEC. 23, T3N, R66W, 6TH P.M.
WELD COUNTY, COLORADO

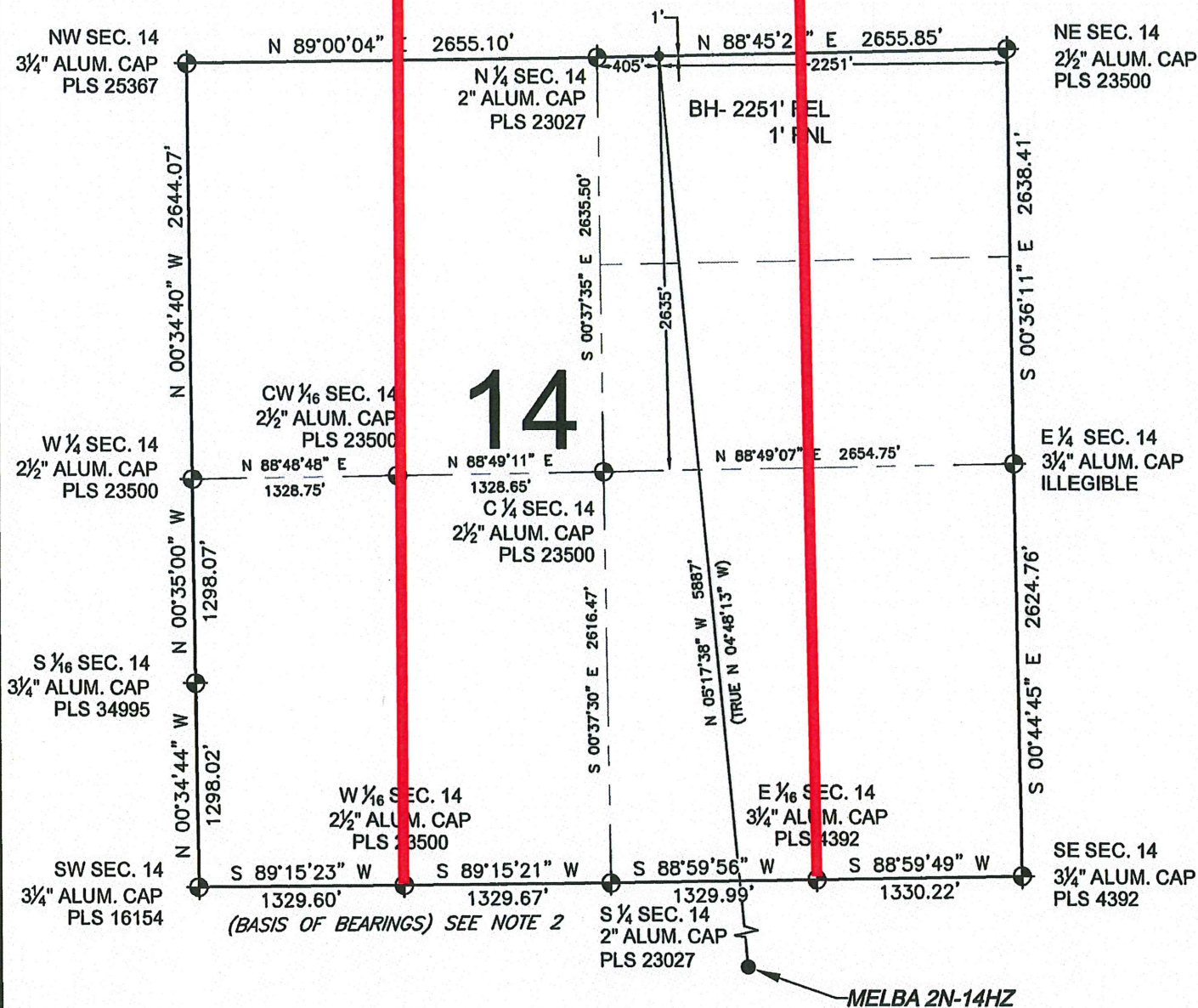
BRADLEY L. LAMAN, PLS 38345
 COLORADO LICENSED PROFESSIONAL LAND SURVEYOR
 FOR AND ON BEHALF OF P.F.S., LLC

NOTICE: ACCORDING TO COLORADO LAW YOU MUST COMMENCE ANY LEGAL ACTION BASED UPON ANY DEFECT IN THIS SURVEY WITHIN THREE YEARS AFTER YOU FIRST DISCOVER SUCH DEFECT. IN NO EVENT MAY ANY ACTION BASED UPON ANY DEFECT IN THIS SURVEY BE COMMENCED MORE THAN TEN YEARS FROM THIS SAID DATE OF THIS CERTIFICATION SHOWN HEREON.

PROPOSED SPACING UNIT

WELL LOCATION CERTIFICATE: MELBA 2N-14HZ

SECTION 14, TOWNSHIP 3 NORTH, RANGE 66 WEST, 6TH P.M.



NOTES:

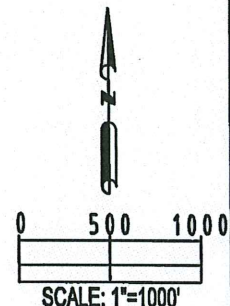
1. THIS FIELD SURVEY CONFORMS TO THE MINIMUM STANDARDS SET BY THE C.O.G.C.C., RULE NO. 215
2. BEARINGS AND DISTANCE SHOWN HEREON ARE GRID AND BASED ON THE COLORADO STATE PLANE COORDINATE SYSTEM, NAD 83/2011 BETWEEN MONUMENTS AS LABELED HEREON AND ELEVATIONS SHOWN ARE NAVD 88, AS DERIVED BY GPS OBSERVATIONS.
3. GRID DISTANCES ARE SHOWN, AS MEASURED IN THE FIELD, WITH TIES TO WELLS MEASURED PERPENDICULAR TO SECTION LINES.

LEGEND

- ⊕ = EXISTING MONUMENT
- = PROPOSED WELL
- BH = BOTTOM HOLE
- ◆ = BOTTOM HOLE
- ◆ = EXISTING WELL



BRADLEY L. LAMAN, PLS 38345
COLORADO LICENSED PROFESSIONAL LAND SURVEYOR
FOR AND ON BEHALF OF P.F.S., LLC



SHEET 2 OF 2



FIELD DATE: 10-02-13	SURFACE LOCATION: NW 1/4 NE 1/4, SEC. 23, T3N, R66W, 6TH P.M.
DRAWING DATE: 10-04-13	WELD COUNTY, COLORADO
BY: JLF	REV: JAH

NOTICE: ACCORDING TO COLORADO LAW YOU MUST COMMENCE ANY LEGAL ACTION BASED UPON ANY DEFECT IN THIS SURVEY WITHIN THREE YEARS AFTER YOU FIRST DISCOVER SUCH DEFECT. IN NO EVENT MAY ANY ACTION BASED UPON ANY DEFECT IN THIS SURVEY BE COMMENCED MORE THAN TEN YEARS FROM THIS SAID DATE OF THIS CERTIFICATION SHOWN HEREON.