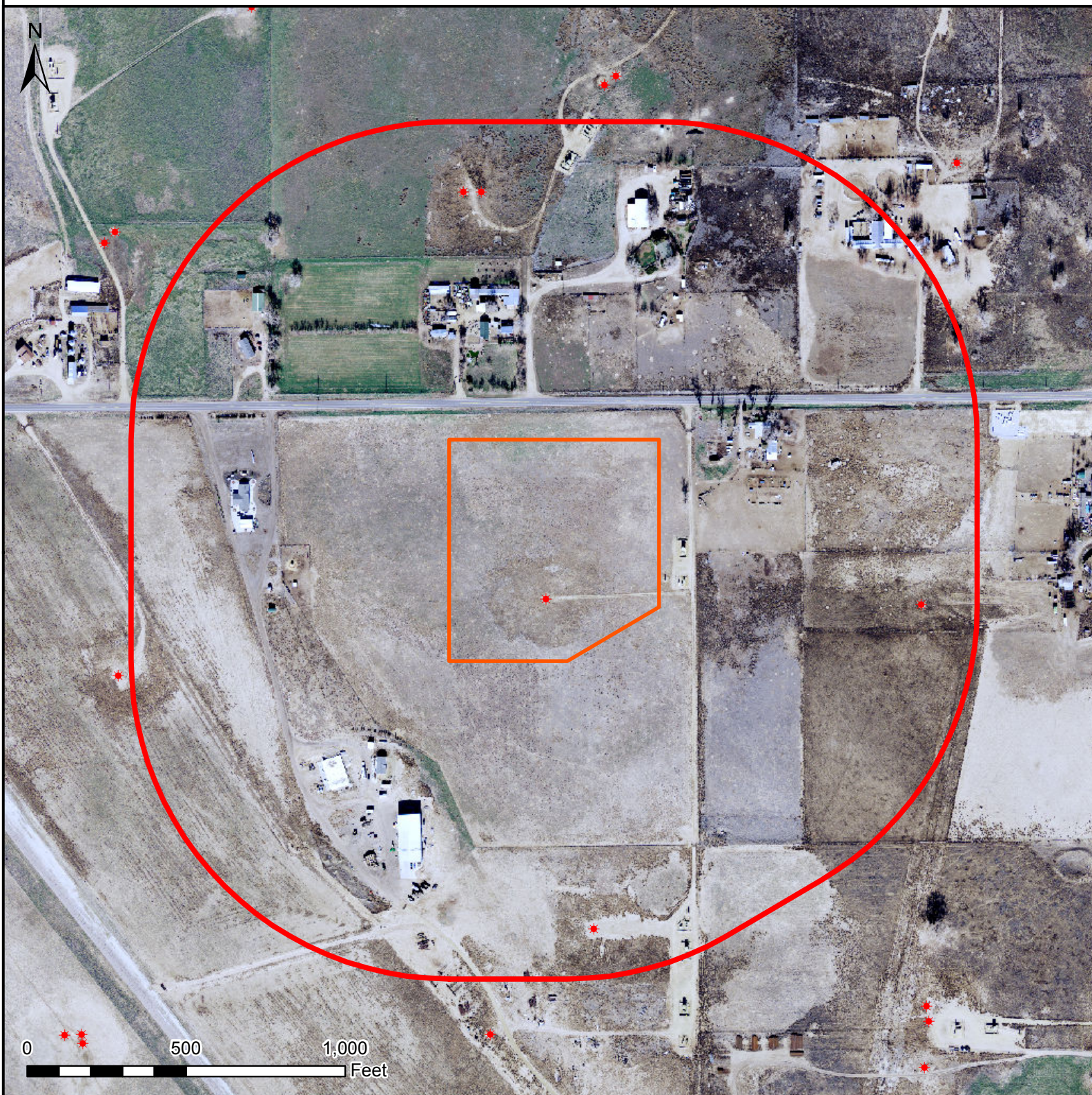





HYDROLOGY MAP MELBA 2N-14HZ



Legend

-  Well pad (proposed)
-  1000' buffer
-  Existing oil/gas well (COGCC)

Nearest Surface Water Feature

Pond: 810' NW
Stream elevation: 4952'
Well elevation: 4960'

All measurements are made from
the reference well.



Date created: 11/21/2013
Created by: APC Regulatory GIS
Scale: 1:5,000
Projection: NAD83 UTM 13N