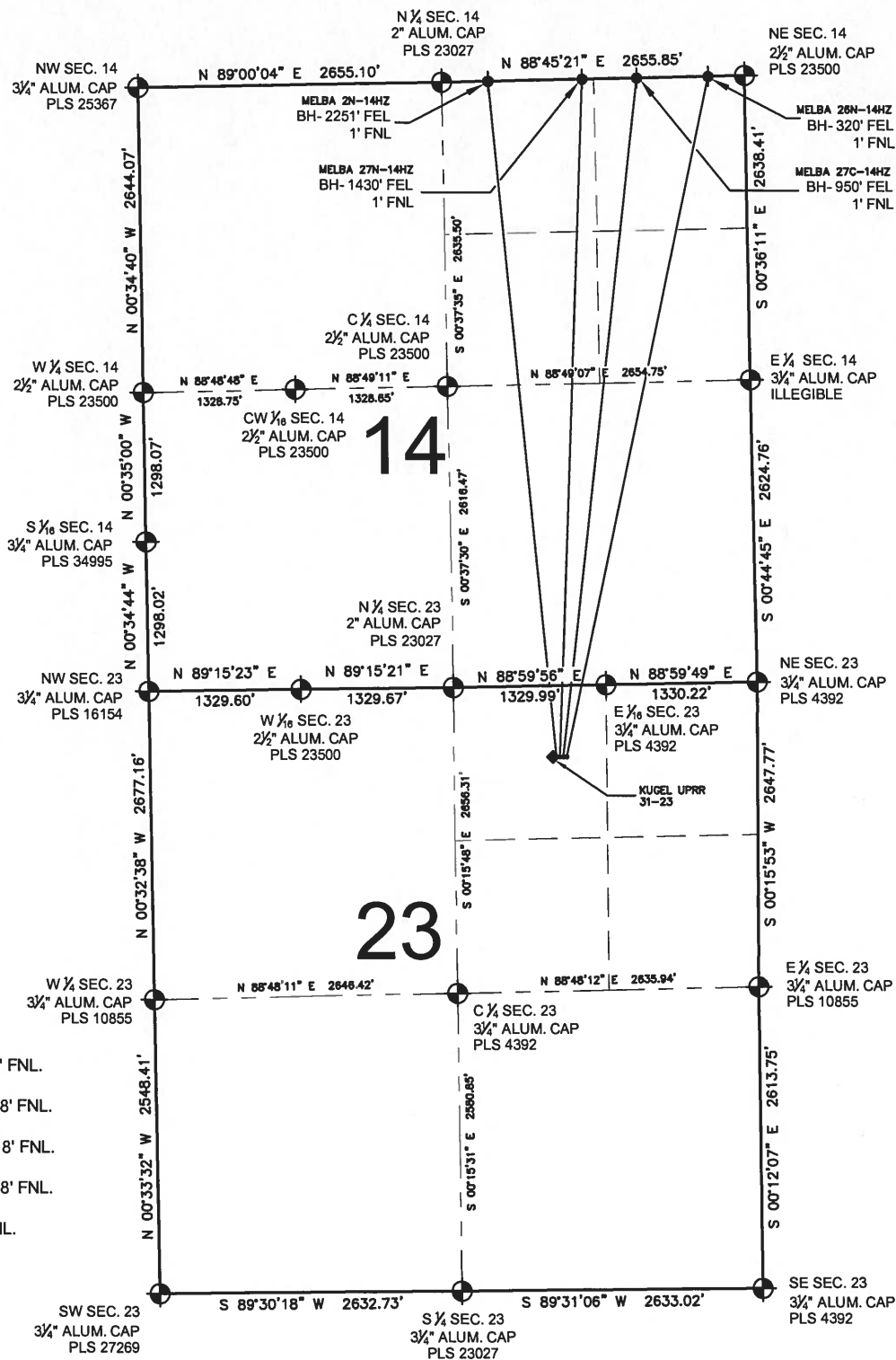





SECTION 23, TOWNSHIP 3 NORTH, RANGE 66 WEST, 6TH P.M.



LEGEND

-  = EXISTING MONUMENT
 • = PROPOSED WELL
 = BOTTOM HOLE
 = EXISTING WELL
 BH= BOTTOM HOLE

NOTES:

MELBA 2N-14HZ TO BE AT 1766' FEL, 618' FNL.
BOTTOM HOLE AT 2251' FEL & 1' FNL.
MELBA 27N-14HZ TO BE AT 1736' FEL, 618' FNL.
BOTTOM HOLE AT 1430' FEL & 1' FNL.
MELBA 27C-14HZ TO BE AT 1706' FXL, 618' FNL.
BOTTOM HOLE AT 950' FEL & 1' FNL.
MELBA 26N-14HZ TO BE AT 1676' FEL, 618' FNL.
BOTTOM HOLE AT 320' FEL & 1' FNL.
KUGEL UPRR 31-23 AT 1796' FEL, 618' FNL.

PREPARED BY:



Petroleum Field Services, LLC
7535 Hilltop Circle
Denver, CO 80221

KERR-MCGEE OIL & GAS ONSHORE LP

FIELD DATE:

10-02-13

DRAWING DATE:

10-03-13

SURFACE LOCATION:

NW 1/4 NE 1/4, SEC. 23, T3N, R66W, 6TH P.M.

WELD COUNTY, COLORADO