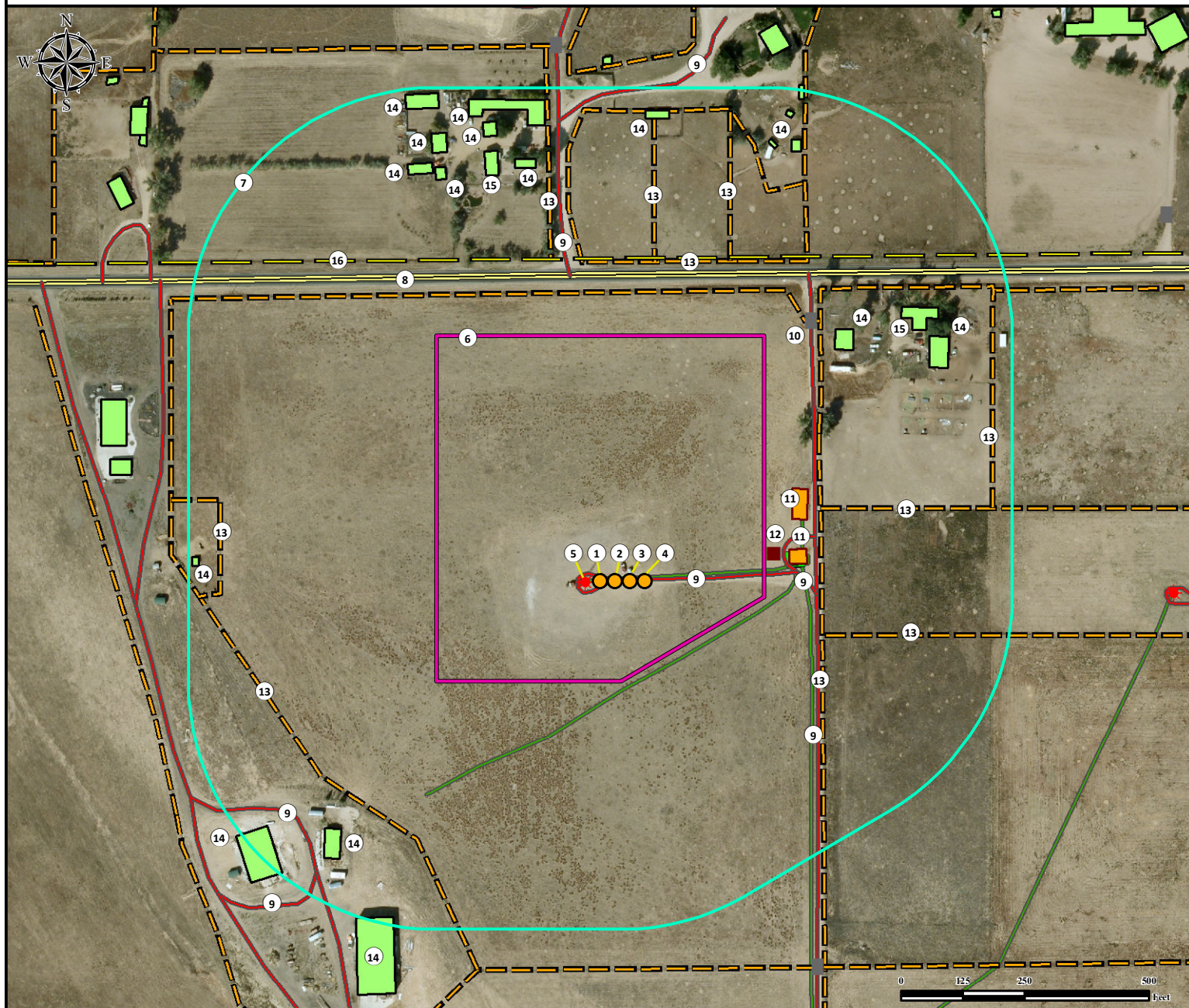


Location Drawing

MELBA 2N-14HZ

Horizontal Multi Well Pad

NW¼ NE¼ SECTION 23, TOWNSHIP 3 NORTH, RANGE 66 WEST OF THE 6TH PRINCIPAL MERIDIAN



1. Proposed Well MELBA 2N-14HZ.
2. Proposed Well MELBA 27N-14HZ.
3. Proposed Well MELBA 27C-14HZ.
4. Proposed Well MELBA 26N-14HZ.
5. Existing Well KUGEL 31-23A is ±30' W.
6. Operational Disturbance Area.
7. 500' Radius.
8. County Road 32 is ±618' N.

9. Private Roads are ±9' SE, ±372' E, ±435' E, ±620' N, ±774' SW, and ±817' SW.
10. Gate is ±676' NE.
11. Existing Facilities are ±381' NE and ±406' NE.
12. ECD is ±353' NE.
13. Fences are ±445' E, ±458' SE, ±467' NE, ±636' SW, ±643' N, ±653' NE, ±656' NW, ±696' NE, ±765' W, and ±802' NE.

14. Buildings are ±665' NE, ±722' SW, ±790' NE, ±793' SW, ±832' SW, ±844' NW, ±870' NW, ±891' NW, ±919' NW, ±924' NW, ±927' NW, ±937' NE, ±942' NE, ±948' NE, ±1009' NE, ±1011' NE, and ±1052' NE.
15. Building Units are ±807' NE and ±845' NW.
16. Powerline is ±650' N.

Legend	Proposed Well	500' Radius	Powerline
Existing Well	Building	Facility Enclosure	Fence
Gate	ECD	Public Road	Pipeline
ECD	Disturbance Area	Private Road	

Reference Location

**** All measurements are made from Reference Well MELBA 2N-14HZ ****
Lat: 40.216163° Long: -104.741112° (NAD83)
Elevation: 4960 Feet

Surface Use: Pasture

Nearest Building Unit: ±807' NE

Prepared for:

Anadarko
 Petroleum Corporation
KERR-MCGEE OIL & GAS ONSHORE LP



Use our resources to find yours!
www.petro-fs.com
(303) 928-7128

Field Date: 10/02/2013
 Drafting Date: 10/10/2013
 Drafter: CPO
 Revision:

Data Sources:
 - Aerial courtesy of Anadarko Petroleum Corporation (2010)