

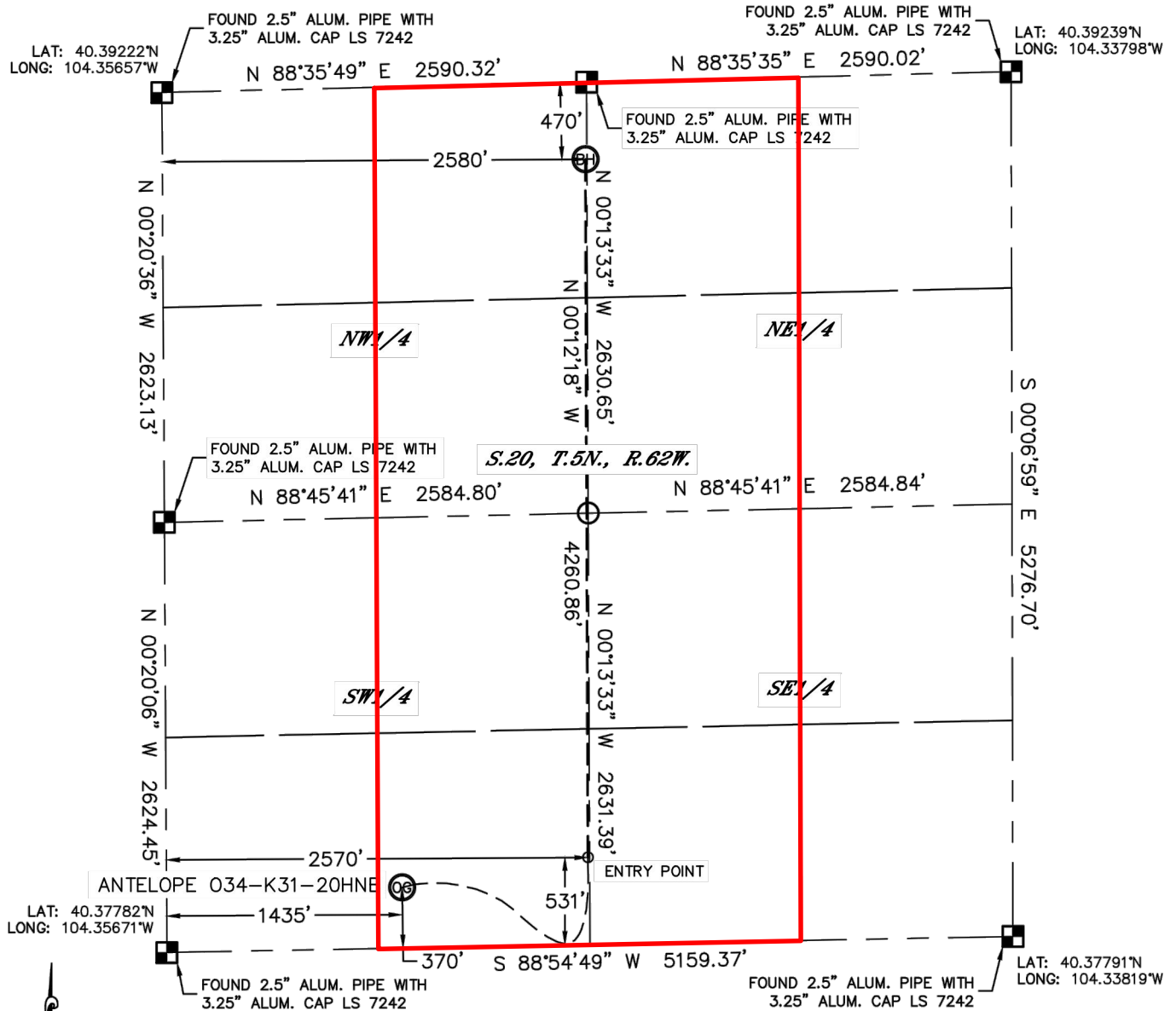


Lat40°, Inc. 1635 Foxtrail Drive, Suite 325 Loveland, CO 970-776-3321

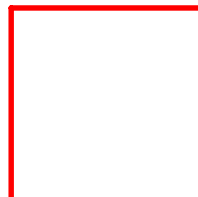
WELL LOCATION CERTIFICATE

THIS MAP DOES NOT REPRESENT A BOUNDARY SURVEY

SECTION: 20
TOWNSHIP: 5N
RANGE: 62W



In accordance with a request from Keith Caplan with BONANZA CREEK ENERGY, INC. Lat40°, Inc. has determined the surface location of the ANTELOPE 034-K31-20HNB to be 370' from the SOUTH line and 1435' from the WEST line and the bottom hole to be 470' from the NORTH line and 2580' from the EAST line.



Wellbore Spacing Unit Outline



Wellbore Spacing Unit Map

08 November 2013 ksc

Antelope 031-K34-20HNB
W2/E2 & E2/W2 Sec 20 T5N R62W 6th PM
Weld County, Colorado