

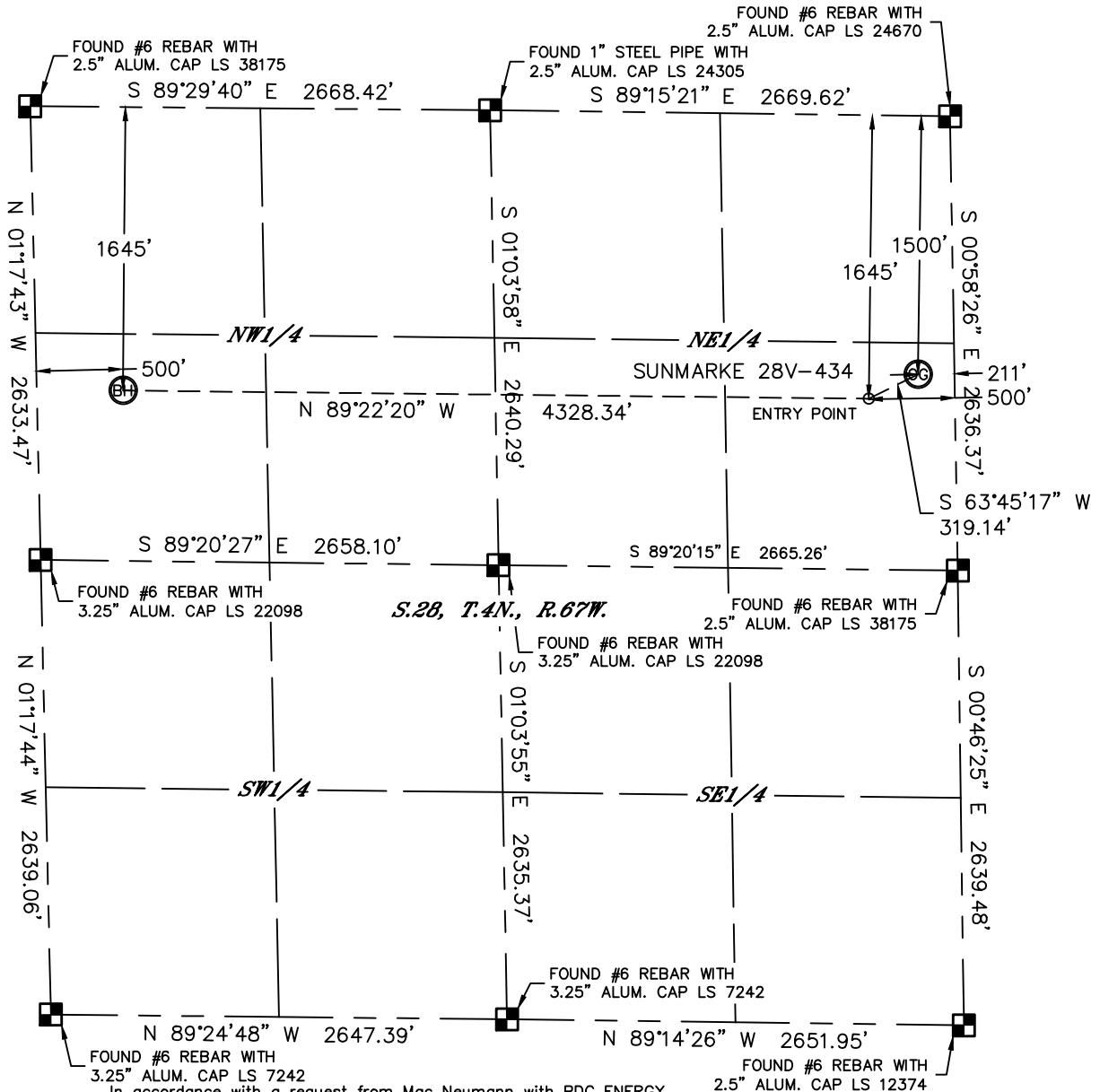


Lat40°, Inc. 1635 Foxtrail Drive, Suite 325 Loveland, CO 970-776-3321

WELL LOCATION CERTIFICATE

THIS MAP DOES NOT REPRESENT A BOUNDARY SURVEY

SECTION: 28
TOWNSHIP: 4N
RANGE: 67W



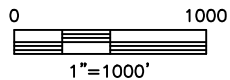
S.28, T.4N., R.67W.

FOUND #6 REBAR WITH 3.25" ALUM. CAP LS 7242

FOUND #6 REBAR WITH 2.5" ALUM. CAP LS 12374

In accordance with a request from Mac Neumann with PDC ENERGY Lat40°, Inc. has determined the surface location of the SUNMARKE 28V-434 to be 1500' from the NORTH line and 211' from the EAST line and the bottom hole to be 1645' from the NORTH line and 500' from the WEST line as measured at right angles from the section lines of Section 28, Township 4 North, Range 67 West of the Sixth Principal Meridian, County of Weld, State of Colorado.

I hereby state that this Well Location Certificate was prepared by me, or under my direct supervision, that the fieldwork was completed on 8/26/2013, for and on behalf of PDC ENERGY. That this is not a Land Survey Plat or an Improvement Survey Plat, and that it is not to be relied upon for establishment of fence, building, or other future improvement lines.



NOTE:

- 1) Bearings shown are Grid Bearings of the Colorado State Plane Coordinate System, North Zone, North American Datum 1983/2007. The lineal dimensions as contained herein are based upon the "U.S. Survey Foot."
- 2) Ground elevations are based on an observed GPS elevation (NAVD 1988 DATUM).
- 3) IMPROVEMENTS: See LOCATION DRAWING for all visible improvements within 400' of disturbed area.
- 4) SURFACE USE: CROPLAND
- 5) INSTRUMENT OPERATOR: MARK ANGELL
- 6) NEAREST CULTURAL ITEMS:
BUILDING 344' NE
BUILDING UNIT 344' NE
HIGH OCCUPANCY BUILDING UNIT 5280'+
DESIGNATED OUTSIDE ACTIVITY AREA 5280'+
PUBLIC ROAD 200' E (CR19)
ABOVE GROUND UTILITY 236' E
RAILROAD 5280'+
PROPERTY LINE 211' E

LEGEND

- = ALIQUOT MONUMENT AS DESCRIBED
○ = CALCULATED POSITION

SURFACE LOCATION

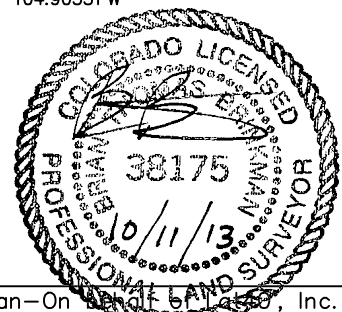
LAT: 40.28684°N
LONG: 104.88697°W
PDOP: 2.0
ELEV: 4907'
1/4, 1/4: SE1/4NE1/4

ENTRY POINT

LAT: 40.28645°N
LONG: 104.88800°W

BOTTOM HOLE

LAT: 40.28666°N
LONG: 104.90351°W



Brian T. Brinkman—On behalf of Lat40°, Inc.
Colorado Licensed Professional
Land Surveyor No. 38175
DATE: 10/11/2013
PROJECT#: 2013073

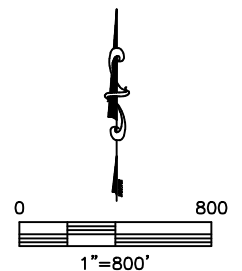
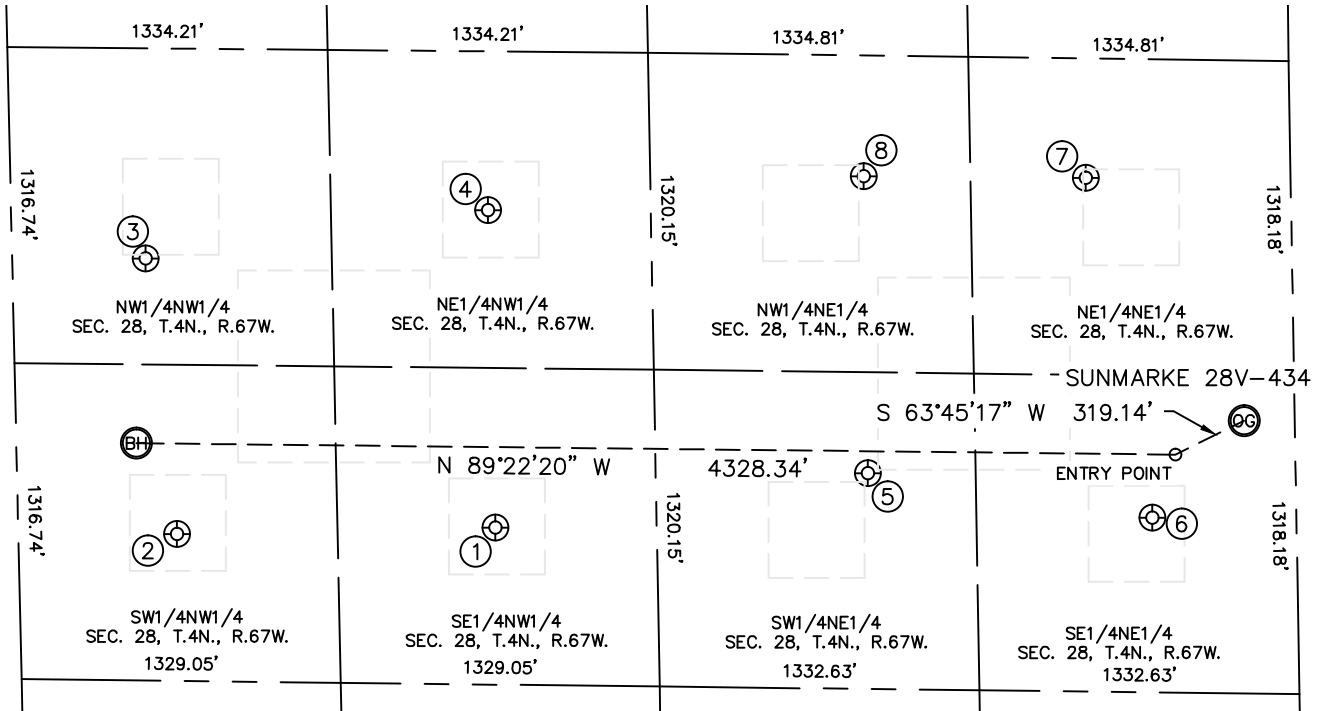


Lat40°, Inc. 1635 Foxtrail Drive, Suite 325 Loveland, CO 970-776-3321

SITE SKETCH

SUNMARKE 28V-434

SECTION: 28
TOWNSHIP: 4N
RANGE: 67W



WELL #	WELL NAME	SHL FOOTAGE				SHL LAT°	SHL LONG°	PDOP	ELEV (FT.)	1/4/1/4
1	MCCARTY 28-4	1983	FNL	1987	FWL	40.28567	-104.89816	1.6	4970	SENW
2	MCCARTY 28-1	2022	FNL	660	FWL	40.28562	-104.90291	1.3	4988	SWNW
3	MCCARTY 28-5	876	FNL	556	FWL	40.28877	-104.90335	1.5	4973	NWNW
4	MCCARTY 28-3	663	FNL	1986	FWL	40.2893	-104.89823	2.5	4961	NENW
5	MCCARTY 28-7	1739	FNL	1783	FEL	40.28626	-104.89259	1.0	4926	SWNE
6	MCCARTY 28-2	1910	FNL	600	FEL	40.28573	-104.88835	1.7	4917	SENE
7	MCCARTY 28-8	497	FNL	854	FEL	40.28962	-104.88931	2.3	4906	NENE
8	MCCARTY 28-6	503	FNL	1778	FEL	40.28966	-104.89262	2.4	4924	NWNE

DATE: 10/11/2013
PROJECT#: 2013073