

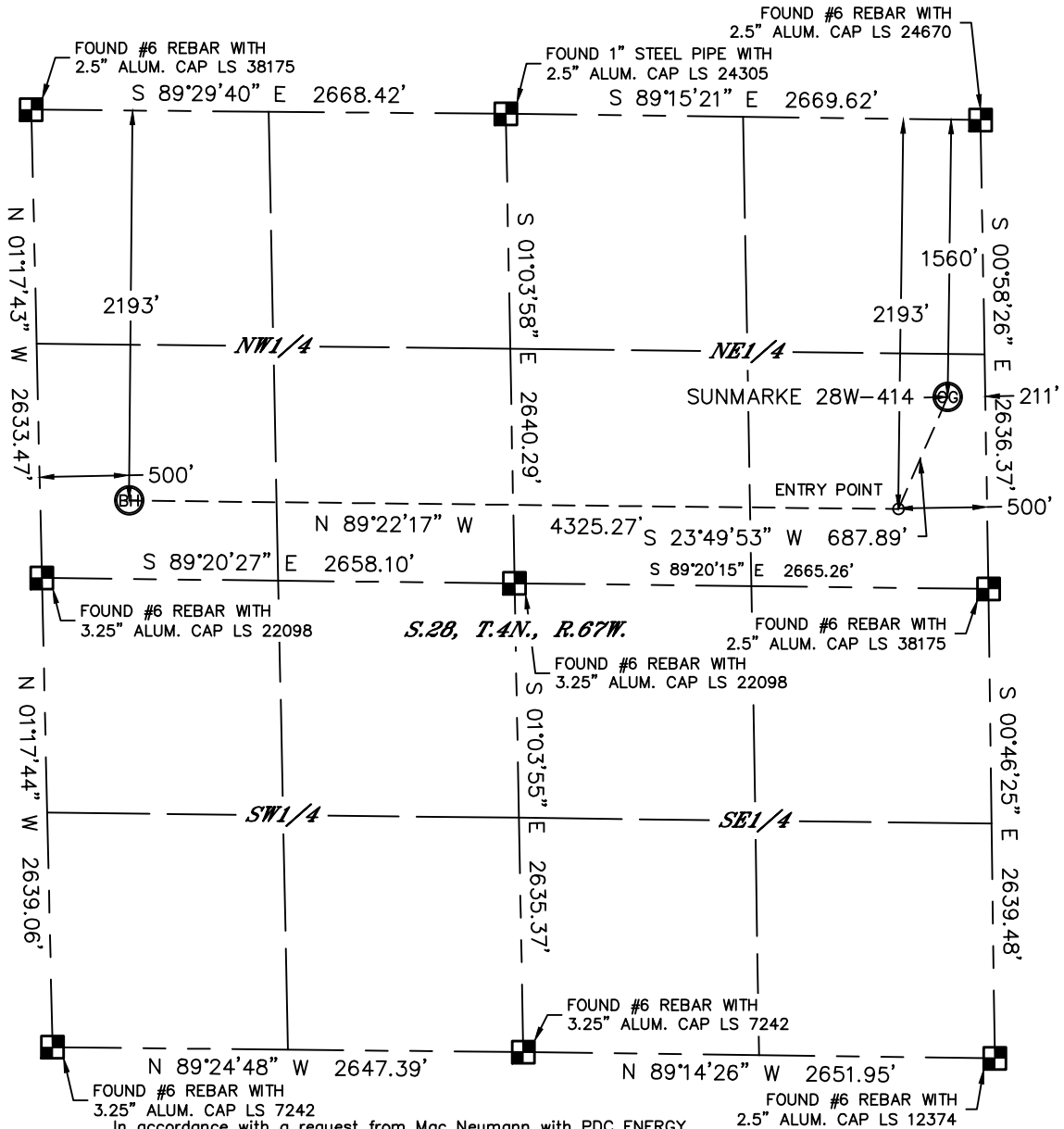


Lat40°, Inc. 1635 Foxtrail Drive, Suite 325 Loveland, CO 970-776-3321

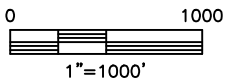
# WELL LOCATION CERTIFICATE

THIS MAP DOES NOT REPRESENT A BOUNDARY SURVEY

SECTION: 28  
TOWNSHIP: 4N  
RANGE: 67W



*S.28, T.4N., R.67W.*



In accordance with a request from Mac Neumann with PDC ENERGY Lat40°, Inc. has determined the surface location of the SUNMARKE 28W-414 to be 1560' from the NORTH line and 211' from the EAST line and the bottom hole to be 2193' from the NORTH line and 500' from the WEST line as measured at right angles from the section lines of Section 28, Township 4 North, Range 67 West of the Sixth Principal Meridian, County of Weld, State of Colorado.

I hereby state that this Well Location Certificate was prepared by me, or under my direct supervision, that the fieldwork was completed on 8/26/2013, for and on behalf of PDC ENERGY. That this is not a Land Survey Plat or an Improvement Survey Plat, and that it is not to be relied upon for establishment of fence, building, or other future improvement lines.

## NOTE:

- 1) Bearings shown are Grid Bearings of the Colorado State Plane Coordinate System, North Zone, North American Datum 1983/2007. The lineal dimensions as contained herein are based upon the "U.S. Survey Foot."
- 2) Ground elevations are based on an observed GPS elevation (NAVD 1988 DATUM).
- 3) IMPROVEMENTS: See LOCATION DRAWING for all visible improvements within 400' of disturbed area.
- 4) SURFACE USE: CROPLAND
- 5) INSTRUMENT OPERATOR: MARK ANGELL
- 6) NEAREST CULTURAL ITEMS:  
BUILDING 378' NE  
BUILDING UNIT 378' NE  
HIGH OCCUPANCY BUILDING UNIT 5280'+  
DESIGNATED OUTSIDE ACTIVITY AREA 5280'+  
PUBLIC ROAD 200' E (CR19)  
ABOVE GROUND UTILITY 236' E  
RAILROAD 5280'+  
PROPERTY LINE 211' E

## LEGEND

- = ALIQUOT MONUMENT AS DESCRIBED  
○ = CALCULATED POSITION

## SURFACE LOCATION

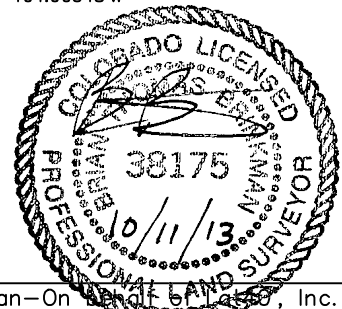
LAT: 40.28667°N  
LONG: 104.88697°W  
PDOP: 2.0  
ELEV: 4908'  
1/4,1/4: SE1/4NE1/4

## ENTRY POINT

LAT: 40.28495°N  
LONG: 104.88798°W

## BOTTOM HOLE

LAT: 40.28516°N  
LONG: 104.90348°W



Brian T. Brinkman—On behalf of Lat40°, Inc.  
Colorado Licensed Professional  
Land Surveyor No. 38175  
DATE: 10/11/2013  
PROJECT#: 2013073

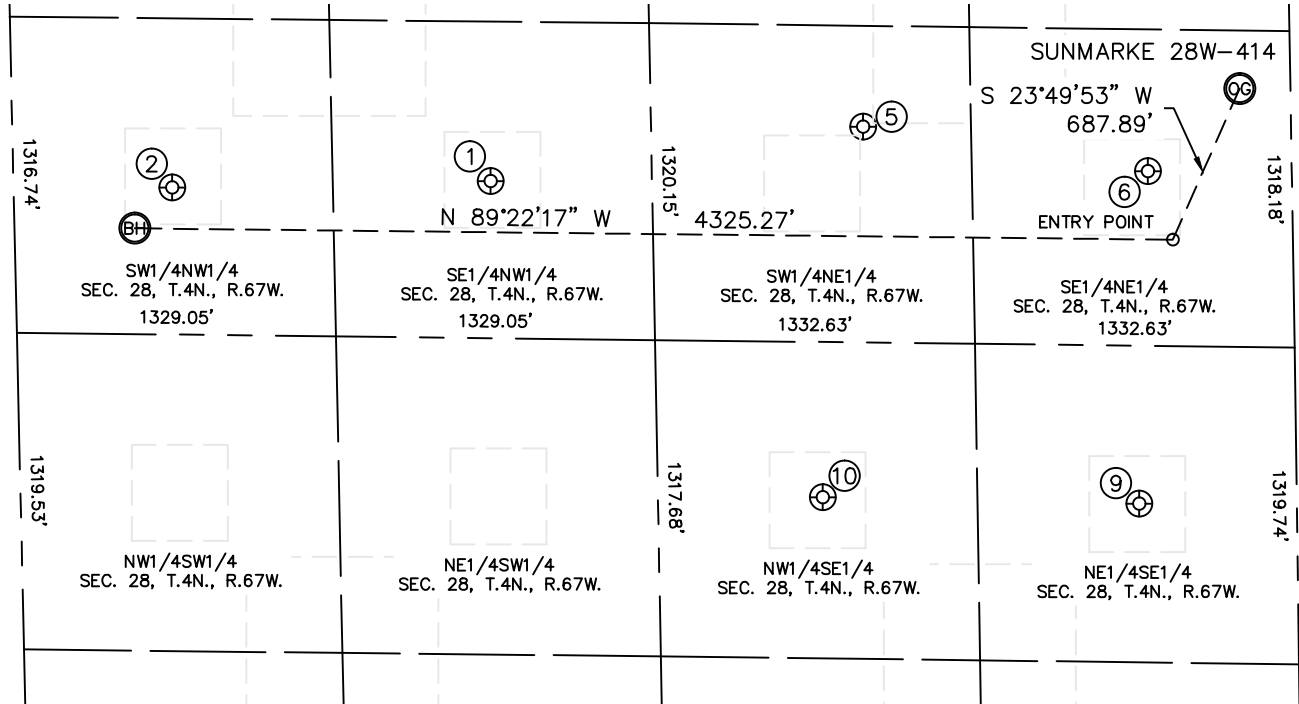


Lat40°, Inc. 1635 Foxtrail Drive, Suite 325 Loveland, CO 970-776-3321

# SITE SKETCH

SUNMARKE 28W-414

SECTION: 28  
TOWNSHIP: 4N  
RANGE: 67W



WELL #	WELL NAME	SHL FOOTAGE				SHL LAT°	SHL LONG°	PDOP	ELEV (FT.)	1/4/1/4
1	MCCARTY 28-4	1983	FNL	1987	FWL	40.28567	-104.89816	1.6	4970	SENW
2	MCCARTY 28-1	2022	FNL	660	FWL	40.28562	-104.90291	1.3	4988	SWNW
5	MCCARTY 28-7	1739	FNL	1783	FEL	40.28626	-104.89259	1.0	4926	SWNE
6	MCCARTY 28-2	1910	FNL	600	FEL	40.28573	-104.88835	1.7	4917	SENE
9	STROH 28-9	1979	FSL	657	FEL	40.28193	-104.88851	1.7	4940	NESE
10	STROH 28-10	1989	FSL	1975	FEL	40.28203	-104.89323	1.7	4940	NWSE

DATE: 10/11/2013  
PROJECT#: 2013073