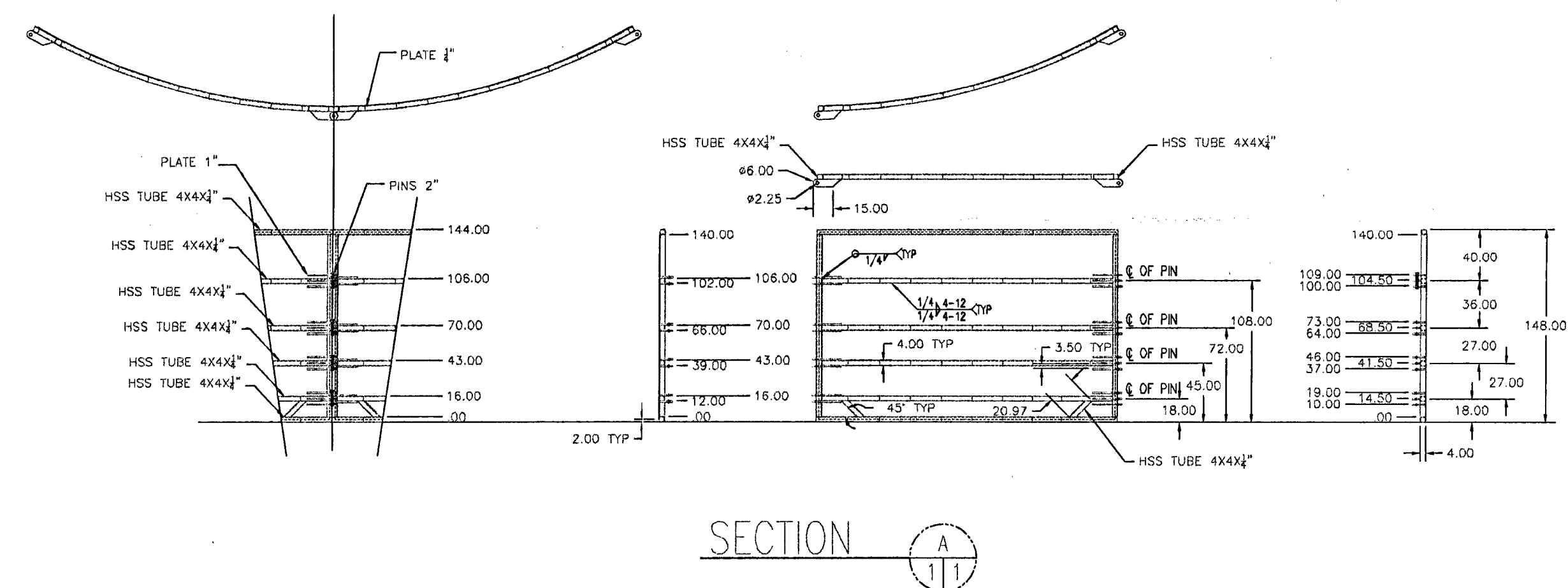
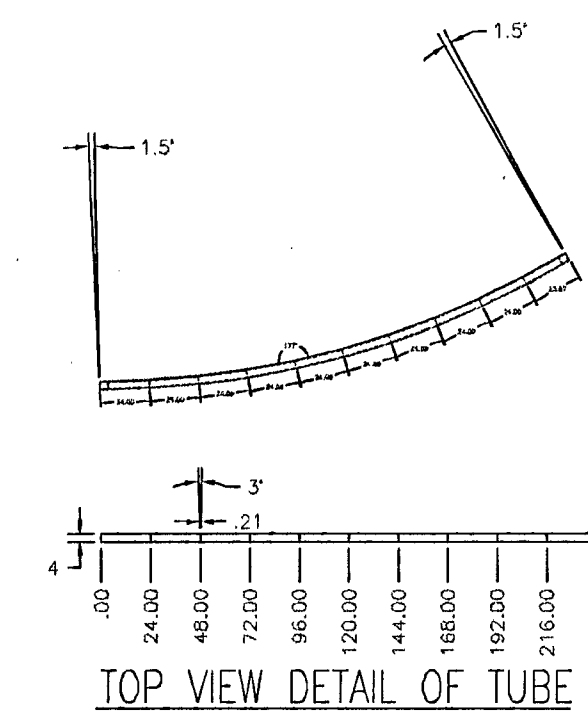
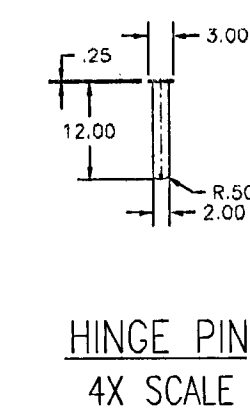
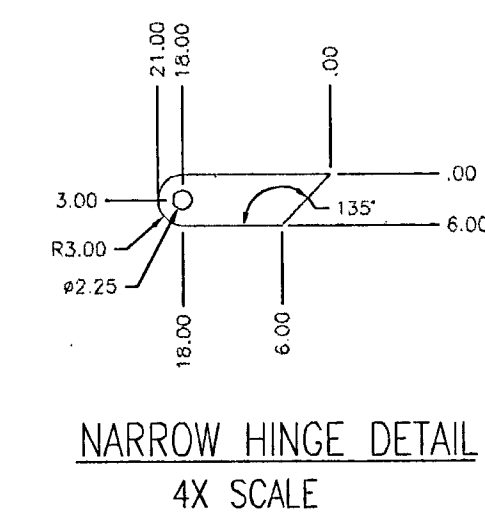
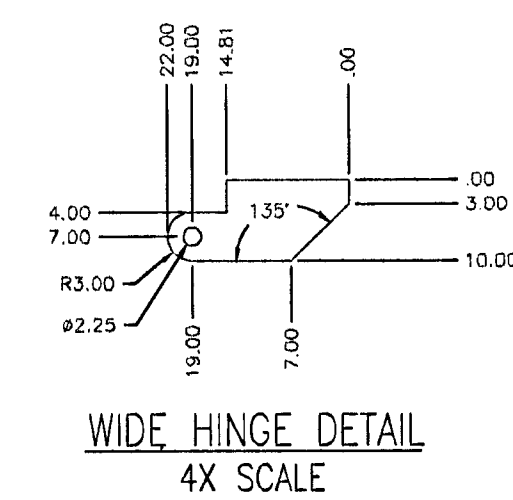


12 UNITS - WATER TANK FENCE
INCLUDED VOLUME 54,048 cu ft
(404,307 gal / 9,626 bbl)



DESIGN NOTES

- ALL STRUCTURAL STEEL SHALL BE DESIGNED, DETAILED, FABRICATED, AND ERECTED IN ACCORDANCE WITH AISC SPECIFICATIONS, AISC CODE OF STANDARD PRACTICE AND AISC MANUAL OF STEEL CONSTRUCTION.
- STRUCTURAL STEEL SHALL BE AS FOLLOWS:
HSS TUBES - A500, GRADE B
PLATES - A36
PINS - AISI 4140
- ALL WELDING ELECTRODES FOR MANUAL SHIELDED METAL ARC WELDING SHALL CONFORM TO AWS D1.1. USE E70XX SERIES ELECTRODES.
- GROUND SHALL BE COMPACTED TO 95% (MODIFIED PROCTOR) AND LEVELED.
- ALL EXPOSED METAL TO BE COATED TO PREVENT RUSTING.

BEHRENT ENGINEERING COMPANY
11455 W. I-70, N. Frontage Road
Wheat Ridge, CO 80033-2101
Phone # (303) 998-6368



REV	DESCRIPTION	BY/DATE	APVD/DATE	THIS DRAWING AND THE SUBJECT MATTER THEREOF IS THE PROPERTY OF C&H EXCAVATION AND IS CONFIDENTIAL INFORMATION. DISCLOSURE OR USE OF SUCH INFORMATION WITHOUT WRITTEN CONSENT OF C&H EXCAVATION IS PROHIBITED, EXCEPT AS PROVIDED BY SEPARATE WRITTEN ASSIGNMENT. PAC INTERNATIONAL MAKES NO WARRANTY (EXPRESS, IMPLIED, OR STATUTORY) AS TO THIS DRAWING.	NAME	DATE	C&H EXCAVATION AULT, CO U.S.A.	
0	INITIAL RELEASE	DRB_28APR2011	DRB_28APR2011		DRN: DRB	28APR2011	PROJECT- WATER TANK FENCE	
A	ADDED-CERTIFICATION-DETAILS-NOTES	DRB_14MAY2011	DRB_15MAY2011		CHK:		SECTION TITLE- ASSEMBLIES	
B	MOVED-TOP-BEAM-AND-HINGE-DOWN-18"	DRB_16MAY2011	DRB_16MAY2011		APVD:		908.73"-DIAMETER-WATER-TANK	
					UNLESS OTHERWISE SPECIFIED		12UNITS-STEEL-CONSTRUCTION	
					MATERIAL:		CAD: C&H EXCAVATION WATER TANK FENCE SMALL REV B	
					TOLERANCE ± mm (INCHES)		SCALE: 1:100	
					.XXX		SHT 1 OF 1	
					.XXXX		DWG NO: C&H-EXCAVATION-WATER-TANK-FENCE-SMALL	
					ANGLES:		REV B	