

**ANADARKO PETROLEUM CORP - EBUS
DO NOT MAIL - PO BOX 4995
THE WOODLANDS, Texas**

Butterball 28C-15HZ

Major 29

Post Job Summary **Cement Surface Casing**

Prepared for:
Date Prepared: 9/29/2013
Version: 1

Service Supervisor: FANTASIA, JOSEPH

Submitted by: FINNEY, SEAN

HALLIBURTON

Wellbore Geometry

Job Tubulars					MD		Shoe Joint Length ft
Type	Description	Size in	ID in	Wt lbm/ft	Top ft	Bottom ft	
Casing	9 5/8" Surface Casing	9.63	8.921	36.00	0.00	1,012.00	44.00
Open Hole Section	13 1/2" Open Hole Section		13.500		0.00	1,032.00	0.00

HALLIBURTON

Pumping Schedule

Stage / Plug #	Fluid #	Fluid Type	Fluid Name	Surface Density lbm/gal	Avg Rate bbl/min	Surface Volume	Downhole Volume
1	1	Spacer	Fresh Water Spacer	8.33	4.00	10.0 bbl	10.0 bbl
1	2	Spacer	Mud Flush	8.40	4.00	12.0 bbl	12.0 bbl
1	3	Cement Slurry	SwiftCem B2	14.20	6.00	405.0 sacks	405.0 sacks

Fluids Pumped

Stage/Plug # 1 Fluid 1: Fresh Water Spacer
DUMMY MUD / FLUSH / SPACER SBC MATERIAL

Fluid Density: 8.33 lbm/gal
Fluid Volume: 10.00 bbl
Pump Rate: 4.00 bbl/min

Stage/Plug # 1 Fluid 2: Mud Flush
DUMMY MUD / FLUSH / SPACER SBC MATERIAL
42 gal/bbl Mud Flush III
3.5 lbm/bbl Mud Flush III

Fluid Density: 8.40 lbm/gal
Fluid Volume: 12.00 bbl
Pump Rate: 4.00 bbl/min

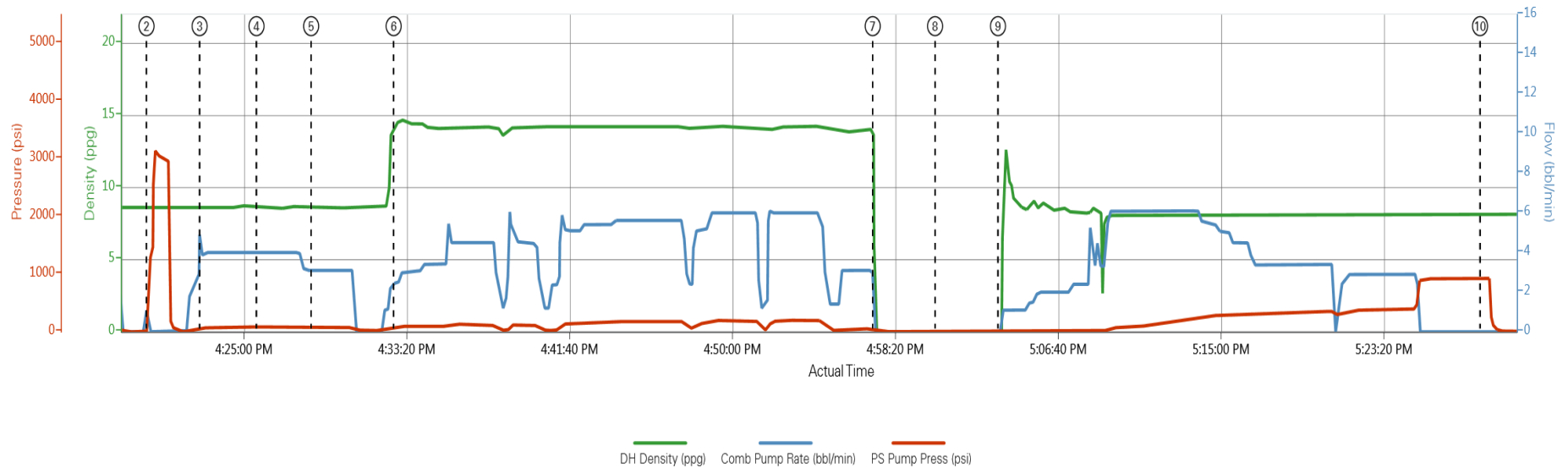
Stage/Plug # 1 Fluid 3: SwiftCem B2
SWIFTCM (TM) SYSTEM

Fluid Weight: 14.20 lbm/gal
Slurry Yield: 1.55 ft³/sack
Total Mixing Fluid: 7.68 Gal
Surface Volume: 405.0 sacks
Sacks: 405.0 sacks
Calculated Fill: 900.00 ft
Calculated Top of Fluid: 0.00 ft

HALLIBURTON

Data Acquisition

ANADARKO BUTTERBALL 28C-15HZ SURFACE



- ① Start Job
- ② Test Lines
- ③ Pump Spacer 1
- ④ Pump Spacer 2
- ⑤ Pump Spacer 1
- ⑥ Pump Lead Cement
- ⑦ Shutdown
- ⑧ Drop Top Plug
- ⑨ Pump Displacement
- ⑩ Bump Plug

▲ Halliburton | iCem Service®

Created: 2013-09-24 12:36:10, Version: 1.4.96

Edit

HALLIBURTON

Service Supervisor Reports

Job Log

Date/Time	Chart #	Activity Code	Pump Rate	Cum Vol	Pump		Pressure (psig)		Comments
09/24/2013 14:00		Arrive at Location from Service Center							ARRIVE AT LOCATION. RIG RUNNING CASING
09/24/2013 14:15		Assessment Of Location Safety Meeting							PERFORM SITE ASSESSMENT AND HAZARD HUNT WITH CREW PRIOR TO SPOTTING EQUIPMENT AND RIGGING UP.
09/24/2013 15:57		Start Job							PERFROM PRE-JOB SAFETY MEETING WITH ALL PRESENT PERSONELL PRIOR TO JOB
09/24/2013 16:20		Test Lines						3050.0	PRESSURE TEST LINES TO 3000 PSI.
09/24/2013 16:22		Pump Spacer 1	4	10				89.0	PUMP 10 BBLS WATER
09/24/2013 16:25		Pump Spacer 2	4	12				70.0	PUMP 12 BBLS MUDFLUSH
09/24/2013 16:28		Pump Spacer 1	4	10				89.0	PUMP 10 BBLS WATER
09/24/2013 16:32		Pump Cement	6	111				116.0	405 SKS SWIFTCCEM MIXED AT 14.2 PPG USING RIG WATER
09/24/2013 16:57		Shutdown							
09/24/2013 17:00		Drop Top Plug							PLUG PRELOADED
09/24/2013 17:03		Pump Displacement	6	75.5				46.0	GOOD RETURNS THROUGHOUT. CEMENT TO SURFACE AT 50 BBLS OUT OF 75 TOTAL BBLS DISPLACEMENT. APPROX 25 BBLS TO SURFACE.
09/24/2013 17:25		Bump Plug	3					400.0	PLUG LANDED AT 400 PSI. PRESSURE BROUGHT TO 920 PSI AND HELD FOR 5 MIN.
09/24/2013 17:30		Check Floats							FLOATS HELD. .5 BBLS BACK.
09/24/2013 17:45		End Job							PERFROM PRE RIG DOWN SAFETY MEETING

The Road to Excellence Starts with Safety

Sold To #: 300466	Ship To #: 3106934	Quote #:	Sales Order #: 900768898
Customer: ANADARKO PETROLEUM CORP - EBUS		Customer Rep: Strong, Brett	
Well Name: Butterball		Well #: 28C-15HZ	API/UWI #: 05-123-37909
Field: WATTENBURG	City (SAP): FIRESTONE	County/Parish: Weld	State: Colorado
Job Purpose: Cement Surface Casing			
Well Type: Development Well		Job Type: Cement Surface Casing	
Sales Person: GREGORY, JON		Srvc Supervisor: FANTASIA, JOSEPH	MBU ID Emp #: 485445

Job Personnel

HES Emp Name	Exp Hrs	Emp #	HES Emp Name	Exp Hrs	Emp #	HES Emp Name	Exp Hrs	Emp #
AGUILAR, VENTURA	4.0	123456	DA COSTA, CHARLES	4.0	123456	FANTASIA, JOSEPH Brandon	4.0	485445
HINKLE, BRADLEY Dean	4.0	512123	JOHNSON, BRANDON	4.0	545534			

Equipment

HES Unit #	Distance-1 way	HES Unit #	Distance-1 way	HES Unit #	Distance-1 way	HES Unit #	Distance-1 way
10972458	15 mile	11019275C	15 mile	11064046C	15 mile	11410470C	15 mile

Job Hours

Date	On Location Hours	Operating Hours	Date	On Location Hours	Operating Hours	Date	On Location Hours	Operating Hours
TOTAL			Total is the sum of each column separately					

Job

Job Times

Formation Name						Date	Time	Time Zone
Formation Depth (MD)	Top		Bottom		Called Out	24 - Sep - 2013	10:00	MST
Form Type			BHST		On Location	24 - Sep - 2013	14:00	MST
Job depth MD	1012. ft		Job Depth TVD	1012. ft	Job Started	24 - Sep - 2013	13:57	MST
Water Depth			Wk Ht Above Floor		Job Completed	24 - Sep - 2013	17:35	MST
Perforation Depth (MD)	From		To		Departed Loc	24 - Sep - 2013	18:00	MST

Well Data

Description	New / Used	Max pressure psig	Size in	ID in	Weight lbm/ft	Thread	Grade	Top MD ft	Bottom MD ft	Top TVD ft	Bottom TVD ft
13 1/2" Open Hole Section				13.5				.	1032.		
9 5/8" Surface Casing	Unknown		9.625	8.921	36.		J-55	.	1012.		

Fluid Data

Stage/Plug #: 1

Fluid #	Stage Type	Fluid Name	Qty	Qty uom	Mixing Density lbm/gal	Yield ft ³ /sk	Mix Fluid Gal/sk	Rate bbl/min	Total Mix Fluid Gal/sk
---------	------------	------------	-----	---------	------------------------	---------------------------	------------------	--------------	------------------------

1	Fresh Water Spacer		10.00	bbl	8.33	.0	.0	4.0	
2	Mud Flush		12.00	bbl	8.4	.0	.0	4.0	
42 gal/bbl		MUD FLUSH III - SBM (528788)							
3.5 lbm/bbl		MUD FLUSH III, 40 LB SACK (101633304)							
3	SwiftCem B2	SWIFTCM (TM) SYSTEM (452990)	405.0	sacks	14.2	1.55	7.68	6.0	7.68
7.68 Gal		FRESH WATER							
Calculated Values		Pressures		Volumes					
Displacement		Shut In: Instant		Lost Returns		Cement Slurry		Pad	
Top Of Cement		5 Min		Cement Returns		Actual Displacement		Treatment	
Frac Gradient		15 Min		Spacers		Load and Breakdown		Total Job	
Rates									
Circulating		Mixing		Displacement		Avg. Job			
Cement Left In Pipe		Amount	44 ft	Reason	Shoe Joint				
Frac Ring # 1 @	ID	Frac ring # 2 @	ID	Frac Ring # 3 @	ID	Frac Ring # 4 @	ID		
The Information Stated Herein Is Correct				Customer Representative Signature					

