

**ANADARKO PETROLEUM CORP - EBUS  
DO NOT MAIL - PO BOX 4995  
THE WOODLANDS, Texas**

USA Fed 02C-36HZ

**Major 42**

## **Post Job Summary**

# **Cement Surface Casing**

Prepared for:  
Date Prepared: 9/29/2013  
Version: 1

Service Supervisor: SMITH, AARON

Submitted by: FINNEY, SEAN

**HALLIBURTON**

# HALLIBURTON

## Wellbore Geometry

---

Job Tubulars					MD		Shoe Joint Length ft
Type	Description	Size in	ID in	Wt lbm/ft	Top ft	Bottom ft	
Casing	9 5/8" Surface Casing	9.63	8.921	36.00	0.00	888.00	43.00
Open Hole Section	13 1/2" Open Hole Section		13.500		0.00	898.00	0.00

# HALLIBURTON

## Pumping Schedule

Stage /Plug #	Fluid #	Fluid Type	Fluid Name	Surface Density lbm/gal	Avg Rate bbl/min	Surface Volume	Downhole Volume
1	1	Spacer	Fresh Water Spacer	8.33	5.00	10.0 bbl	10.0 bbl
1	2	Spacer	Mud Flush	8.40	5.00	12.0 bbl	12.0 bbl
1	3	Cement Slurry	SwiftCem B2	14.20	5.00	323.0 sacks	323.0 sacks

## Fluids Pumped

**Stage/Plug # 1 Fluid 1:** Fresh Water Spacer  
DUMMY MUD / FLUSH / SPACER SBC MATERIAL

Fluid Density: 8.33 lbm/gal  
Fluid Volume: 10.00 bbl  
Pump Rate: 5.00 bbl/min

**Stage/Plug # 1 Fluid 2:** Mud Flush  
DUMMY MUD / FLUSH / SPACER SBC MATERIAL  
3.33 lbm/bbl Mud Flush III  
42 gal/bbl Mud Flush III

Fluid Density: 8.40 lbm/gal  
Fluid Volume: 12.00 bbl  
Pump Rate: 5.00 bbl/min

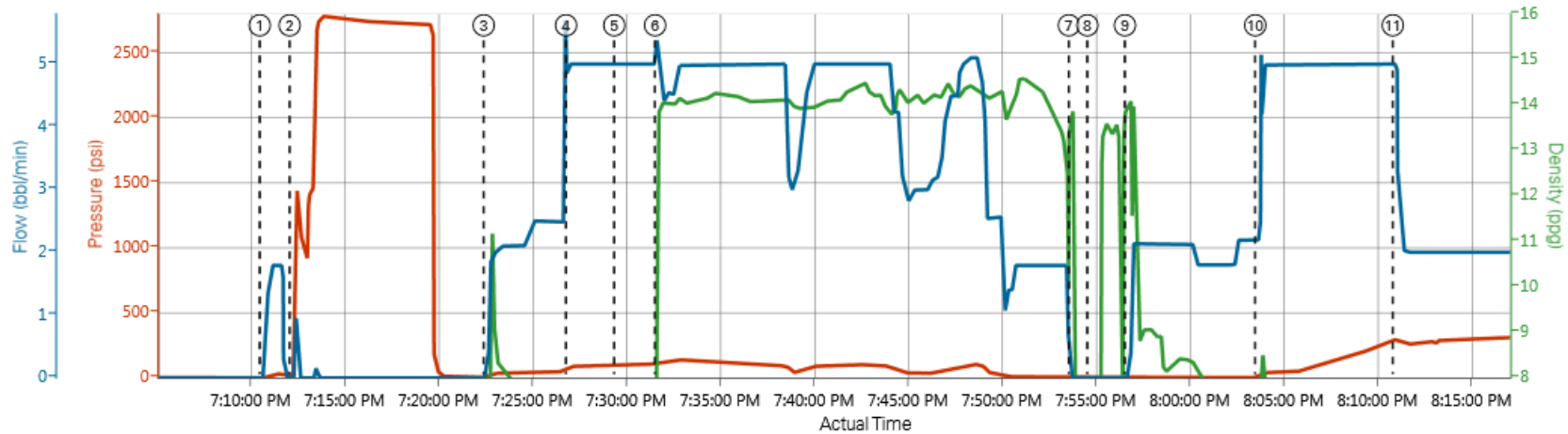
**Stage/Plug # 1 Fluid 3:** SwiftCem B2  
SWIFTCEM (TM) SYSTEM

Fluid Weight: 14.20 lbm/gal  
Slurry Yield: 1.54 ft<sup>3</sup>/sack  
Total Mixing Fluid: 7.66 Gal  
Surface Volume: 323.0 sacks  
Sacks: 323.0 sacks  
Calculated Fill: 900.00 ft  
Calculated Top of Fluid: 0.00 ft

# HALLIBURTON

## Data Acquisition

Custom Results



PS Pump Press (psi)    DH Density (ppg)    Comb Pump Rate (bbbl/min)

① Start Job 1;7.8;0	④ Pump Spacer 2 84;7.89;5	⑦ Shutdown 3;13.91;0	⑩ Pump Displacement 1;7.91;2.2	⑬ End Job 7;7.79;0
② Test Lines 17;7.86;0	⑤ Pump Spacer 1 95;7.85;5	⑧ Drop Top Plug 2;-0.5;0	⑪ Other 297;7.74;5	
③ Pump Spacer 1 5;7.83;0	⑥ Pump Cement 125;13.67;4.9	⑨ Clean Lines 3;14;0	⑫ Bump Plug 1092;7.75;0	

## Service Supervisor Reports

### The Road to Excellence Starts with Safety

<b>Sold To #:</b> 300466		<b>Ship To #:</b> 3014504		<b>Quote #:</b>		<b>Sales Order #:</b> 900755466	
<b>Customer:</b> ANADARKO PETROLEUM CORP - EBUS				<b>Customer Rep:</b> Porter, Bob			
<b>Well Name:</b> USA Fed			<b>Well #:</b> 02C-36HZ		<b>API/UWI #:</b> 05-123-36887		
<b>Field:</b> WATTENBERG		<b>City (SAP):</b> PLATTEVILLE		<b>County/Parish:</b> Weld		<b>State:</b> Colorado	
<b>Lat:</b> N 40.176 deg. OR N 40 deg. 10 min. 35.141 secs.				<b>Long:</b> W 104.723 deg. OR W -105 deg. 16 min. 37.916 secs.			
<b>Job Purpose:</b> Cement Surface Casing							
<b>Well Type:</b> Development Well				<b>Job Type:</b> Cement Surface Casing			
<b>Sales Person:</b> PLIENESS, RYAN			<b>Srvc Supervisor:</b> SMITH, AARON			<b>MBU ID Emp #:</b> 518187	

### Job Personnel

HES Emp Name	Exp Hrs	Emp #	HES Emp Name	Exp Hrs	Emp #	HES Emp Name	Exp Hrs	Emp #
ACEVEDO, ROBERTO Carlos	0.0	551312	DODSON, RICHARD Bryan	0.0	518192	SMITH, AARON David	0.0	518187

### Equipment

HES Unit #	Distance-1 way	HES Unit #	Distance-1 way	HES Unit #	Distance-1 way	HES Unit #	Distance-1 way
10246780C	15 mile	10988836C	15 mile	11398490	15 mile	12010173	15 mile

### Job Hours

Date	On Location Hours	Operating Hours	Date	On Location Hours	Operating Hours	Date	On Location Hours	Operating Hours
<b>TOTAL</b>								

*Total is the sum of each column separately*

### Job

### Job Times

Formation Name	Top	Bottom	Called Out	Date	Time	Time Zone
<b>Form Type</b>	BHST		<b>On Location</b>	18 - Sep - 2013	00:00	MST
<b>Job depth MD</b>	898. ft	<b>Job Depth TVD</b>	<b>Job Started</b>	18 - Sep - 2013	00:00	MST
<b>Water Depth</b>		<b>Wk Ht Above Floor</b>	<b>Job Completed</b>	18 - Sep - 2013	00:00	MST
<b>Perforation Depth (MD)</b>	<i>From</i>	<i>To</i>	<b>Departed Loc</b>	18 - Sep - 2013	00:00	MST

### Well Data

Description	New / Used	Max pressure psig	Size in	ID in	Weight lbm/ft	Thread	Grade	Top MD ft	Bottom MD ft	Top TVD ft	Bottom TVD ft
13 1/2" Open Hole Section				13.5				.	898.		
9 5/8" Surface Casing	Unknown		9.625	8.921	36.		J-55	.	888.		

### Fluid Data

#### Stage/Plug #: 1

Fluid #	Stage Type	Fluid Name	Qty	Qty uom	Mixing Density lbm/gal	Yield ft <sup>3</sup> /sk	Mix Fluid Gal/sk	Rate bbl/min	Total Mix Fluid Gal/sk
---------	------------	------------	-----	---------	------------------------	---------------------------	------------------	--------------	------------------------

1	Fresh Water Spacer		10.00	bbl	8.33	.0	.0	.0	
2	Mud Flush		12.00	bbl	8.4	.0	.0	.0	
	3.33 lbm/bbl	MUD FLUSH III, 40 LB SACK (101633304)							
	42 gal/bbl	MUD FLUSH III - SBM (528788)							
3	SwiftCem B2	SWIFTCEM (TM) SYSTEM (452990)	323.0	sacks	14.2	1.54	7.66		7.66
	7.66 Gal	FRESH WATER							
Calculated Values		Pressures			Volumes				
Displacement		Shut In: Instant		Lost Returns		Cement Slurry		Pad	
Top Of Cement		5 Min		Cement Returns		Actual Displacement		Treatment	
Frac Gradient		15 Min		Spacers		Load and Breakdown		Total Job	
Rates									
Circulating		Mixing		Displacement		Avg. Job			
Cement Left In Pipe	Amount	43 ft	Reason	Shoe Joint					
Frac Ring # 1 @	ID	Frac ring # 2 @	ID	Frac Ring # 3 @	ID	Frac Ring # 4 @	ID		
The Information Stated Herein Is Correct				Customer Representative Signature					

