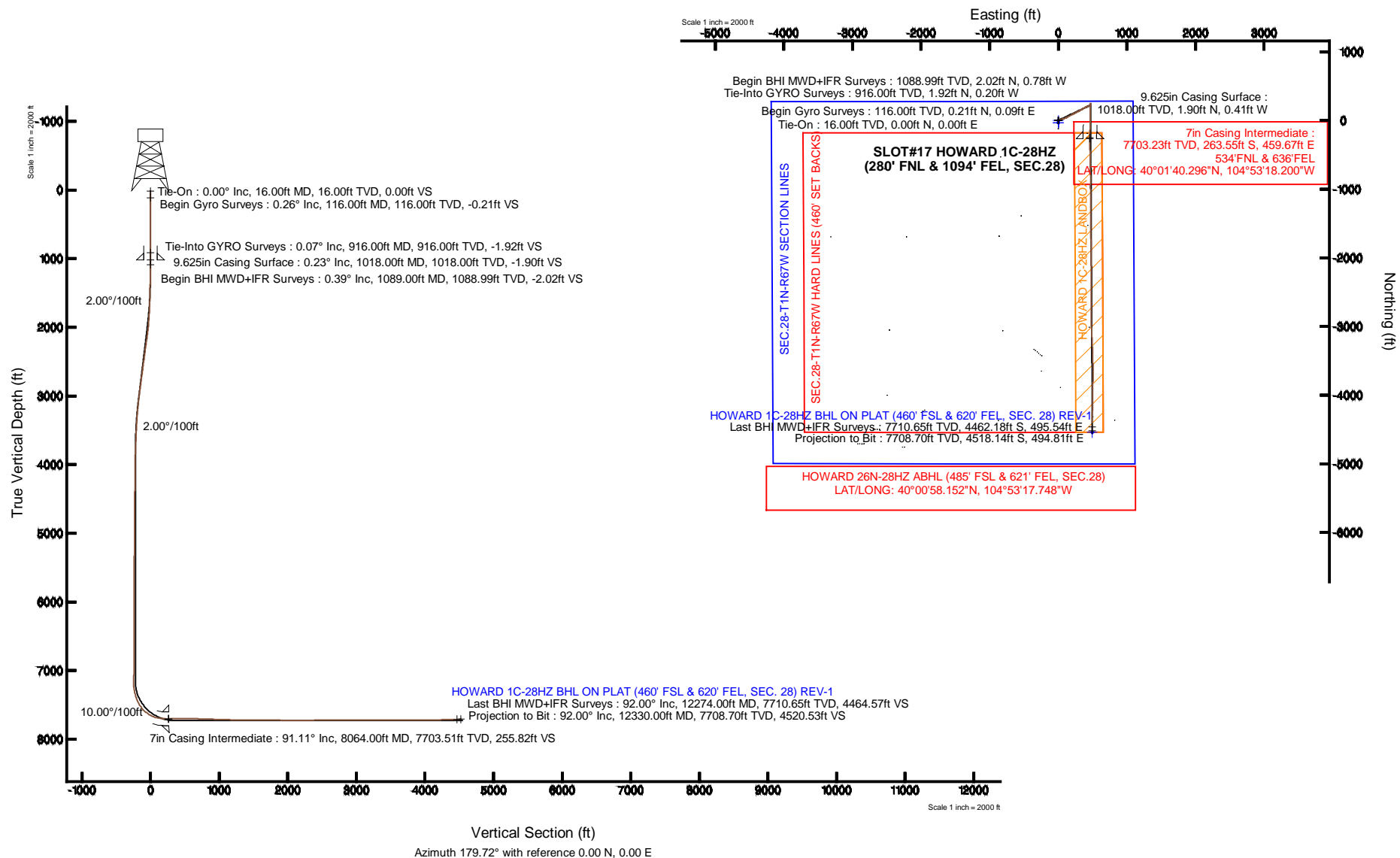


Location:	COLORADO	Slot:	SLOT#17 HOWARD 1C-28HZ (280' FNL & 1094' FEL, SEC.28)
Field:	WELD COUNTY (KERR MCGEE)	Well:	HOWARD 1C-28HZ
Facility:	SEC.28-T1N-R67W	Wellbore:	HOWARD 1C-28HZ PWB

True vertical depths are referenced to XTREME 20 (16KB) (RKB)	Grid System: NAD83 / Lambert Colorado SP, Northern Zone (501), US feet
Measured depths are referenced to XTREME 20 (16KB) (RKB)	North Reference: True north
XTREME 20 (16KB) (RKB) to Mean Sea Level: 4999 feet	Scale: True distance
Mean Sea Level to Mud line (At Slot: SLOTH17 HOWARD 1C-28RZ (280' FNL & 1094' FEL, SEC. 28)); 0 feet	Depths are in feet
Coordinates are in feet referenced to Slot	Created by: precain on 16/Dec/2013



Actual Wellpath Report

HOWARD 1C-28HZ AWP

Page 1 of 6

REFERENCE WELLPATH IDENTIFICATION			
Operator	KERR-MCGEE OIL & GAS ONSHORE LP	Slot	SLOT#17 HOWARD 1C-28HZ (280' FNL & 1094' FEL, SEC.28)
Area	COLORADO	Well	HOWARD 1C-28HZ
Field	WELD COUNTY (KERR MCGEE)	Wellbore	HOWARD 1C-28HZ AWB
Facility	SEC.28-T1N-R67W		

REPORT SETUP INFORMATION			
Projection System	NAD83 / Lambert Colorado SP, Northern Zone (501), US feet	Software System	WellArchitect® 4.0.0
North Reference	True	User	Precain
Scale	0.999964	Report Generated	16/Dec/2013 at 16:20
Convergence at slot	n/a	Database/Source file	WellArchitectDB/_HOWARD_1C-28HZ_AWB.xml

WELLPATH LOCATION						
	Local coordinates		Grid coordinates		Geographic coordinates	
	North[ft]	East[ft]	Easting[US ft]	Northing[US ft]	Latitude	Longitude
Slot Location	1416886.85	2716923.19	3170812.38	1253836.58	40°01'42.802"N	104°53'24.108"W
Facility Reference Pt			316923.76	121463.46	36°32'36.656"N	114°37'52.006"W
Field Reference Pt			3197771.84	1268891.29	40°04'09.600"N	104°47'36.000"W

WELLPATH DATUM			
Calculation method	Minimum curvature	XTREME 20 (16'KB) (RKB) to Facility Vertical Datum	4999.00ft
Horizontal Reference Pt	Slot	XTREME 20 (16'KB) (RKB) to Mean Sea Level	4999.00ft
Vertical Reference Pt	XTREME 20 (16'KB) (RKB)	XTREME 20 (16'KB) (RKB) to Mud Line at Slot (SLOT#17 HOWARD 1C-28HZ (280' FNL & 1094' FEL, SEC.28))	4999.00ft
MD Reference Pt	XTREME 20 (16'KB) (RKB)	Section Origin	N 0.00, E 0.00 ft
Field Vertical Reference	Mean Sea Level	Section Azimuth	179.72°

Actual Wellpath Report

HOWARD 1C-28HZ AWP

Page 2 of 6

REFERENCE WELLPATH IDENTIFICATION

Operator	KERR-MCGEE OIL & GAS ONSHORE LP	Slot	SLOT#17 HOWARD 1C-28HZ (280' FNL & 1094' FEL, SEC.28)
Area	COLORADO	Well	HOWARD 1C-28HZ
Field	WELD COUNTY (KERR MCGEE)	Wellbore	HOWARD 1C-28HZ AWB
Facility	SEC.28-T1N-R67W		

WELLPATH DATA (117 stations) † = interpolated/extrapolated station

MD [ft]	Inclination [°]	Azimuth [°]	TVD [ft]	Vert Sect [ft]	North [ft]	East [ft]	Latitude	Longitude	DLS [°/100ft]	Comments
0.00†	0.000	23.340	0.00	0.00	0.00	0.00	40°01'42.802"N	104°53'24.108"W	0.00	
16.00	0.000	23.340	16.00	0.00	0.00	0.00	40°01'42.802"N	104°53'24.108"W	0.00	Tie-On
116.00	0.260	23.340	116.00	-0.21	0.21	0.09	40°01'42.804"N	104°53'24.107"W	0.26	Begin Gyro Surveys
216.00	0.230	55.370	216.00	-0.53	0.53	0.34	40°01'42.807"N	104°53'24.104"W	0.14	
316.00	0.110	17.190	316.00	-0.73	0.74	0.54	40°01'42.809"N	104°53'24.101"W	0.16	
416.00	0.250	334.530	416.00	-1.02	1.03	0.47	40°01'42.812"N	104°53'24.102"W	0.18	
516.00	0.210	303.580	516.00	-1.32	1.32	0.23	40°01'42.815"N	104°53'24.105"W	0.13	
616.00	0.120	265.580	616.00	-1.42	1.42	-0.03	40°01'42.816"N	104°53'24.108"W	0.14	
716.00	0.180	334.440	716.00	-1.55	1.55	-0.20	40°01'42.817"N	104°53'24.111"W	0.18	
816.00	0.170	17.530	816.00	-1.83	1.83	-0.23	40°01'42.820"N	104°53'24.111"W	0.13	
916.00	0.070	195.510	916.00	-1.92	1.92	-0.20	40°01'42.821"N	104°53'24.111"W	0.24	Tie-Into GYRO Surveys
1089.00	0.390	290.370	1088.99	-2.02	2.02	-0.78	40°01'42.822"N	104°53'24.118"W	0.23	Begin BHI MWD+IFR Surveys
1182.00	1.010	74.940	1181.99	-2.34	2.34	-0.28	40°01'42.825"N	104°53'24.112"W	1.45	
1276.00	2.590	63.990	1275.94	-3.48	3.49	2.43	40°01'42.836"N	104°53'24.077"W	1.71	
1370.00	3.980	71.930	1369.79	-5.40	5.43	7.44	40°01'42.856"N	104°53'24.012"W	1.55	
1464.00	5.520	73.780	1463.46	-7.63	7.71	14.88	40°01'42.878"N	104°53'23.917"W	1.65	
1559.00	6.370	74.420	1557.95	-10.28	10.40	24.34	40°01'42.905"N	104°53'23.795"W	0.90	
1651.00	7.800	75.680	1649.24	-13.14	13.31	35.31	40°01'42.934"N	104°53'23.654"W	1.56	
1743.00	9.900	74.900	1740.14	-16.68	16.92	48.99	40°01'42.969"N	104°53'23.478"W	2.29	
1835.00	11.320	71.820	1830.57	-21.47	21.80	65.21	40°01'43.017"N	104°53'23.270"W	1.66	
1926.00	13.000	70.520	1919.52	-27.58	28.00	83.35	40°01'43.079"N	104°53'23.037"W	1.87	
2018.00	14.230	65.510	2008.94	-35.62	36.14	103.39	40°01'43.159"N	104°53'22.779"W	1.85	
2110.00	15.960	63.250	2097.76	-45.90	46.52	124.98	40°01'43.262"N	104°53'22.501"W	1.99	
2202.00	17.400	62.370	2185.89	-57.86	58.59	148.46	40°01'43.381"N	104°53'22.200"W	1.59	
2294.00	17.020	62.760	2273.77	-70.28	71.13	172.62	40°01'43.505"N	104°53'21.889"W	0.43	
2386.00	16.650	62.590	2361.83	-82.39	83.36	196.29	40°01'43.626"N	104°53'21.585"W	0.41	
2478.00	16.010	62.280	2450.11	-94.25	95.33	219.23	40°01'43.744"N	104°53'21.290"W	0.70	
2570.00	15.390	63.220	2538.68	-105.54	106.73	241.35	40°01'43.857"N	104°53'21.005"W	0.73	
2662.00	16.330	63.200	2627.18	-116.76	118.07	263.80	40°01'43.969"N	104°53'20.717"W	1.02	
2754.00	16.900	61.060	2715.34	-128.95	130.37	287.05	40°01'44.090"N	104°53'20.418"W	0.91	
2846.00	15.740	61.720	2803.63	-141.22	142.75	309.74	40°01'44.213"N	104°53'20.126"W	1.28	
2937.00	14.660	59.890	2891.45	-152.74	154.38	330.57	40°01'44.328"N	104°53'19.858"W	1.30	
3029.00	13.900	58.440	2980.60	-164.27	166.00	350.06	40°01'44.442"N	104°53'19.608"W	0.91	
3121.00	12.990	61.710	3070.08	-174.86	176.69	368.58	40°01'44.548"N	104°53'19.370"W	1.29	
3212.00	11.980	60.710	3158.93	-184.25	186.15	385.82	40°01'44.642"N	104°53'19.148"W	1.13	
3304.00	10.910	63.310	3249.10	-192.75	194.74	401.93	40°01'44.726"N	104°53'18.941"W	1.29	
3396.00	9.500	66.560	3339.64	-199.61	201.67	416.67	40°01'44.795"N	104°53'18.752"W	1.65	
3487.00	8.540	67.810	3429.52	-205.08	207.21	429.82	40°01'44.850"N	104°53'18.583"W	1.08	
3579.00	6.940	68.300	3520.67	-209.66	211.84	441.31	40°01'44.895"N	104°53'18.435"W	1.74	
3669.00	6.100	67.610	3610.09	-213.44	215.67	450.78	40°01'44.933"N	104°53'18.313"W	0.94	
3761.00	4.480	59.690	3701.70	-217.08	219.35	458.41	40°01'44.970"N	104°53'18.215"W	1.93	
3846.00	3.930	52.560	3786.47	-220.50	222.80	463.59	40°01'45.004"N	104°53'18.149"W	0.89	
3931.00	2.790	36.860	3871.32	-223.91	226.22	467.14	40°01'45.038"N	104°53'18.103"W	1.71	
4017.00	1.240	1.170	3957.27	-226.51	228.83	468.41	40°01'45.063"N	104°53'18.086"W	2.24	
4102.00	0.450	297.150	4042.26	-227.58	229.90	468.14	40°01'45.074"N	104°53'18.090"W	1.32	

Actual Wellpath Report

HOWARD 1C-28HZ AWP

Page 3 of 6

REFERENCE WELLPATH IDENTIFICATION

Operator	KERR-MCGEE OIL & GAS ONSHORE LP	Slot	SLOT#17 HOWARD 1C-28HZ (280' FNL & 1094' FEL, SEC.28)
Area	COLORADO	Well	HOWARD 1C-28HZ
Field	WELD COUNTY (KERR MCGEE)	Wellbore	HOWARD 1C-28HZ AWB
Facility	SEC.28-T1N-R67W		

WELLPATH DATA (117 stations) † = interpolated/extrapolated station

MD [ft]	Inclination [°]	Azimuth [°]	TVD [ft]	Vert Sect [ft]	North [ft]	East [ft]	Latitude	Longitude	DLS [°/100ft]	Comments
4358.00	0.490	0.530	4298.25	-229.14	231.45	467.25	40°01'45.089"N	104°53'18.101"W	0.19	
4614.00	0.800	307.080	4554.24	-231.32	233.62	465.84	40°01'45.111"N	104°53'18.120"W	0.25	
4869.00	1.270	294.790	4809.20	-233.60	235.88	461.85	40°01'45.133"N	104°53'18.171"W	0.20	
5124.00	2.340	94.820	5064.14	-234.33	236.63	464.47	40°01'45.140"N	104°53'18.137"W	1.40	
5380.00	2.520	59.400	5319.93	-236.71	239.06	474.53	40°01'45.164"N	104°53'18.008"W	0.58	
5636.00	0.990	283.610	5575.85	-240.08	242.44	477.22	40°01'45.198"N	104°53'17.973"W	1.29	
5891.00	0.860	277.920	5830.82	-240.88	243.22	473.18	40°01'45.206"N	104°53'18.025"W	0.06	
6147.00	0.360	263.500	6086.81	-241.07	243.40	470.48	40°01'45.207"N	104°53'18.060"W	0.20	
6402.00	0.350	214.940	6341.80	-240.35	242.67	469.24	40°01'45.200"N	104°53'18.076"W	0.11	
6657.00	0.260	228.930	6596.80	-239.33	241.65	468.36	40°01'45.190"N	104°53'18.087"W	0.05	
6912.00	0.810	68.020	6851.79	-239.62	241.94	469.59	40°01'45.193"N	104°53'18.071"W	0.42	
7167.00	2.630	347.450	7106.69	-246.01	248.33	469.99	40°01'45.256"N	104°53'18.066"W	1.03	
7210.00	1.450	322.560	7149.66	-247.40	249.73	469.45	40°01'45.270"N	104°53'18.073"W	3.37	
7253.00	2.200	210.390	7192.65	-247.13	249.45	468.70	40°01'45.267"N	104°53'18.083"W	7.11	
7296.00	6.050	191.020	7235.53	-244.19	246.51	467.85	40°01'45.238"N	104°53'18.094"W	9.40	
7338.00	9.180	182.800	7277.16	-238.68	240.99	467.26	40°01'45.183"N	104°53'18.101"W	7.87	
7381.00	12.550	181.520	7319.38	-230.58	232.89	466.97	40°01'45.103"N	104°53'18.105"W	7.86	
7423.00	15.270	181.470	7360.14	-220.49	222.80	466.71	40°01'45.004"N	104°53'18.108"W	6.48	
7466.00	19.470	180.620	7401.17	-207.66	209.97	466.48	40°01'44.877"N	104°53'18.111"W	9.79	
7508.00	23.810	179.430	7440.21	-192.17	194.48	466.49	40°01'44.724"N	104°53'18.111"W	10.39	
7551.00	29.030	179.740	7478.70	-173.05	175.36	466.63	40°01'44.535"N	104°53'18.109"W	12.14	
7593.00	33.780	180.250	7514.54	-151.17	153.48	466.62	40°01'44.319"N	104°53'18.110"W	11.33	
7636.00	39.280	180.080	7549.08	-125.59	127.89	466.55	40°01'44.066"N	104°53'18.110"W	12.79	
7679.00	44.650	180.050	7581.04	-96.84	99.15	466.52	40°01'43.782"N	104°53'18.111"W	12.49	
7722.00	50.950	180.470	7609.91	-65.01	67.31	466.37	40°01'43.467"N	104°53'18.113"W	14.67	
7764.00	56.490	179.690	7634.75	-31.16	33.47	466.33	40°01'43.133"N	104°53'18.113"W	13.27	
7807.00	63.030	180.830	7656.40	5.96	-3.66	466.15	40°01'42.766"N	104°53'18.116"W	15.38	
7849.00	68.730	181.440	7673.55	44.27	-41.97	465.38	40°01'42.387"N	104°53'18.125"W	13.64	
7892.00	75.730	181.820	7686.67	85.17	-82.88	464.22	40°01'41.983"N	104°53'18.140"W	16.30	
7934.00	81.510	181.570	7694.95	126.30	-124.02	463.00	40°01'41.576"N	104°53'18.156"W	13.77	
7977.00	85.370	182.610	7699.86	168.97	-166.70	461.44	40°01'41.155"N	104°53'18.176"W	9.29	
8020.00	86.920	181.300	7702.75	211.84	-209.57	459.98	40°01'40.731"N	104°53'18.195"W	4.72	
8064.00†	91.112	179.716	7703.51	255.82	-253.55	459.59	40°01'40.296"N	104°53'18.200"W	10.18	7" Casing Point
8075.00	92.160	179.320	7703.20	266.81	-264.55	459.68	40°01'40.188"N	104°53'18.199"W	10.18	
8140.00	90.820	179.110	7701.50	331.79	-329.52	460.57	40°01'39.546"N	104°53'18.187"W	2.09	
8225.00	90.270	178.500	7700.70	416.77	-414.49	462.35	40°01'38.706"N	104°53'18.165"W	0.97	
8310.00	89.040	178.230	7701.21	501.75	-499.46	464.77	40°01'37.866"N	104°53'18.134"W	1.48	
8395.00	90.090	178.130	7701.85	586.71	-584.41	467.47	40°01'37.027"N	104°53'18.099"W	1.24	
8480.00	89.380	180.020	7702.25	671.70	-669.39	468.84	40°01'36.187"N	104°53'18.081"W	2.38	
8565.00	87.930	179.320	7704.24	756.68	-754.37	469.33	40°01'35.347"N	104°53'18.075"W	1.89	
8651.00	88.150	179.770	7707.18	842.62	-840.31	470.01	40°01'34.498"N	104°53'18.066"W	0.58	
8736.00	87.940	180.430	7710.08	927.57	-925.26	469.87	40°01'33.658"N	104°53'18.068"W	0.81	
8821.00	88.580	179.610	7712.66	1012.53	-1010.22	469.84	40°01'32.819"N	104°53'18.069"W	1.22	
8907.00	88.240	180.210	7715.05	1098.50	-1096.19	469.97	40°01'31.969"N	104°53'18.067"W	0.80	
8992.00	88.360	179.220	7717.57	1183.46	-1181.15	470.39	40°01'31.130"N	104°53'18.061"W	1.17	

Actual Wellpath Report

HOWARD 1C-28HZ AWP

Page 4 of 6

REFERENCE WELLPATH IDENTIFICATION

Operator	KERR-MCGEE OIL & GAS ONSHORE LP	Slot	SLOT#17 HOWARD 1C-28HZ (280' FNL & 1094' FEL, SEC.28)
Area	COLORADO	Well	HOWARD 1C-28HZ
Field	WELD COUNTY (KERR MCGEE)	Wellbore	HOWARD 1C-28HZ AWB
Facility	SEC.28-T1N-R67W		

WELLPATH DATA (117 stations)

MD [ft]	Inclination [°]	Azimuth [°]	TVD [ft]	Vert Sect [ft]	North [ft]	East [ft]	Latitude	Longitude	DLS [°/100ft]	Comments
9077.00	88.950	179.510	7719.57	1268.43	-1266.12	471.34	40°01'30.290"N	104°53'18.049"W	0.77	
9162.00	90.090	179.210	7720.28	1353.43	-1351.11	472.28	40°01'29.450"N	104°53'18.037"W	1.39	
9247.00	90.490	180.320	7719.85	1438.42	-1436.11	472.63	40°01'28.610"N	104°53'18.033"W	1.39	
9417.00	89.380	178.520	7720.04	1608.41	-1606.09	474.35	40°01'26.930"N	104°53'18.011"W	1.24	
9588.00	89.350	179.500	7721.94	1779.39	-1777.05	477.31	40°01'25.241"N	104°53'17.973"W	0.57	
9758.00	88.550	180.010	7725.05	1949.36	-1947.02	478.04	40°01'23.561"N	104°53'17.963"W	0.56	
9928.00	90.460	180.270	7726.52	2119.34	-2117.00	477.62	40°01'21.881"N	104°53'17.969"W	1.13	
10098.00	90.800	178.900	7724.65	2289.32	-2286.98	478.85	40°01'20.201"N	104°53'17.953"W	0.83	
10268.00	90.120	180.140	7723.29	2459.31	-2456.97	480.28	40°01'18.522"N	104°53'17.935"W	0.83	
10439.00	90.760	179.780	7721.97	2630.30	-2627.96	480.39	40°01'16.832"N	104°53'17.933"W	0.43	
10610.00	90.120	180.460	7720.66	2801.29	-2798.96	480.04	40°01'15.142"N	104°53'17.938"W	0.55	
10780.00	89.590	178.150	7721.09	2971.28	-2968.93	482.10	40°01'13.462"N	104°53'17.911"W	1.39	
10950.00	90.550	176.700	7720.88	3141.13	-3138.75	489.74	40°01'11.784"N	104°53'17.813"W	1.02	
11121.00	89.260	177.180	7721.17	3311.93	-3309.50	498.86	40°01'10.097"N	104°53'17.696"W	0.80	
11291.00	90.120	179.260	7722.09	3481.86	-3479.41	504.14	40°01'08.417"N	104°53'17.628"W	1.32	
11461.00	90.090	179.720	7721.77	3651.85	-3649.40	505.66	40°01'06.738"N	104°53'17.609"W	0.27	
11546.00	90.150	180.320	7721.60	3736.85	-3734.40	505.63	40°01'05.898"N	104°53'17.609"W	0.71	
11631.00	89.870	180.830	7721.58	3821.84	-3819.40	504.77	40°01'05.058"N	104°53'17.620"W	0.68	
11716.00	91.040	181.860	7720.91	3906.80	-3904.37	502.78	40°01'04.218"N	104°53'17.646"W	1.83	
11802.00	90.270	181.220	7719.92	3992.75	-3990.33	500.47	40°01'03.368"N	104°53'17.676"W	1.16	
11887.00	89.870	180.330	7719.82	4077.74	-4075.32	499.32	40°01'02.528"N	104°53'17.690"W	1.15	
11972.00	91.410	180.640	7718.87	4162.72	-4160.31	498.60	40°01'01.689"N	104°53'17.700"W	1.85	
12057.00	92.060	180.670	7716.30	4247.67	-4245.26	497.63	40°01'00.849"N	104°53'17.712"W	0.77	
12142.00	90.980	180.430	7714.04	4332.63	-4330.23	496.81	40°01'00.009"N	104°53'17.723"W	1.30	
12227.00	91.600	180.560	7712.13	4417.60	-4415.20	496.08	40°00'59.170"N	104°53'17.732"W	0.75	
12274.00	92.000	180.750	7710.65	4464.57	-4462.18	495.54	40°00'58.705"N	104°53'17.739"W	0.94	Last BHI MWD+IFR Surveys
12330.00	92.000	180.750	7708.70	4520.53	-4518.14	494.81	40°00'58.152"N	104°53'17.748"W	0.00	Projection to Bit

HOLE & CASING SECTIONS - Ref Wellbore: HOWARD 1C-28HZ AWB Ref Wellpath: HOWARD 1C-28HZ AWP

String/Diameter	Start MD [ft]	End MD [ft]	Interval [ft]	Start TVD [ft]	End TVD [ft]	Start N/S [ft]	Start E/W [ft]	End N/S [ft]	End E/W [ft]
13.5in Open Hole	16.00	1028.00	1012.00	16.00	1028.00	0.00	0.00	1.91	-0.45
9.625in Casing Surface	16.00	1018.00	1002.00	16.00	1018.00	0.00	0.00	1.90	-0.41
8.75in Open Hole	1018.00	8074.00	7056.00	1018.00	7703.23	1.90	-0.41	-263.55	459.67
7in Casing Intermediate	16.00	8064.00	8048.00	16.00	7703.51	0.00	0.00	-253.55	459.59
6.125in Open Hole	8074.00	12330.00	4256.00	7703.23	7708.70	-263.55	459.67	-4518.14	494.81

Actual Wellpath Report

HOWARD 1C-28HZ AWP

Page 5 of 6

REFERENCE WELLPATH IDENTIFICATION

Operator	KERR-MCGEE OIL & GAS ONSHORE LP	Slot	SLOT#17 HOWARD 1C-28HZ (280' FNL & 1094' FEL, SEC.28)
Area	COLORADO	Well	HOWARD 1C-28HZ
Field	WELD COUNTY (KERR MCGEE)	Wellbore	HOWARD 1C-28HZ AWB
Facility	SEC.28-T1N-R67W		

TARGETS

Name	MD [ft]	TVD [ft]	North [ft]	East [ft]	Grid East [US ft]	Grid North [US ft]	Latitude	Longitude	Shape
SEC.28-T1N-R67W HARD LINES (460' SET BACKS)		4999.00	-29.95	0.00	3170812.59	1253806.63	40°01'42.506"N	104°53'24.108"W	polygon
SEC.28-T1N-R67W SECTION LINES		4999.00	-29.95	0.00	3170812.59	1253806.63	40°01'42.506"N	104°53'24.108"W	polygon
HOWARD 1C-28HZ BHL ON PLAT (460' FSL & 620' FEL, SEC. 28) REV-1		7729.00	-4543.08	495.77	3171339.38	1249297.19	40°00'57.906"N	104°53'17.736"W	point
HOWARD 1C-28HZ LANDBOX		7729.00	0.00	0.00	3170812.38	1253836.58	40°01'42.802"N	104°53'24.108"W	polygon

WELLPATH COMPOSITION - Ref Wellbore: HOWARD 1C-28HZ AWB Ref Wellpath: HOWARD 1C-28HZ AWP

Start MD [ft]	End MD [ft]	Positional Uncertainty Model	Log Name/Comment	Wellbore
16.00	916.00	Generic gyro - continuous (Standard)	MS GYRODATA SURVEYS <116-916>	HOWARD 1C-28HZ AWB
916.00	8020.00	NaviTrak (MAGCORR,IFR)	BHI MWD+IFR SURVEYS 8 3/4" HOLE <1089-8020>	HOWARD 1C-28HZ AWB
8020.00	12274.00	NaviTrak (MAGCORR,IFR)	BHI MWD+IFR SURVEYS 6 1/8" HOLE <8075-12274>	HOWARD 1C-28HZ AWB
12274.00	12330.00	Blind Drilling (std)	Projection to bit	HOWARD 1C-28HZ AWB

Actual Wellpath Report

HOWARD 1C-28HZ AWP

Page 6 of 6

REFERENCE WELLPATH IDENTIFICATION

Operator	KERR-MCGEE OIL & GAS ONSHORE LP	Slot	SLOT#17 HOWARD 1C-28HZ (280' FNL & 1094' FEL, SEC.28)
Area	COLORADO	Well	HOWARD 1C-28HZ
Field	WELD COUNTY (KERR MCGEE)	Wellbore	HOWARD 1C-28HZ AWB
Facility	SEC.28-T1N-R67W		

WELLPATH COMMENTS

MD [ft]	Inclination [°]	Azimuth [°]	TVD [ft]	Comment
16.00	0.000	23.340	16.00	Tie-On
116.00	0.260	23.340	116.00	Begin Gyro Surveys
916.00	0.070	195.510	916.00	Tie-Into GYRO Surveys
1089.00	0.390	290.370	1088.99	Begin BHI MWD+IFR Surveys
8064.00	91.112	179.716	7703.51	7" Casing Point
12274.00	92.000	180.750	7710.65	Last BHI MWD+IFR Surveys
12330.00	92.000	180.750	7708.70	Projection to Bit