

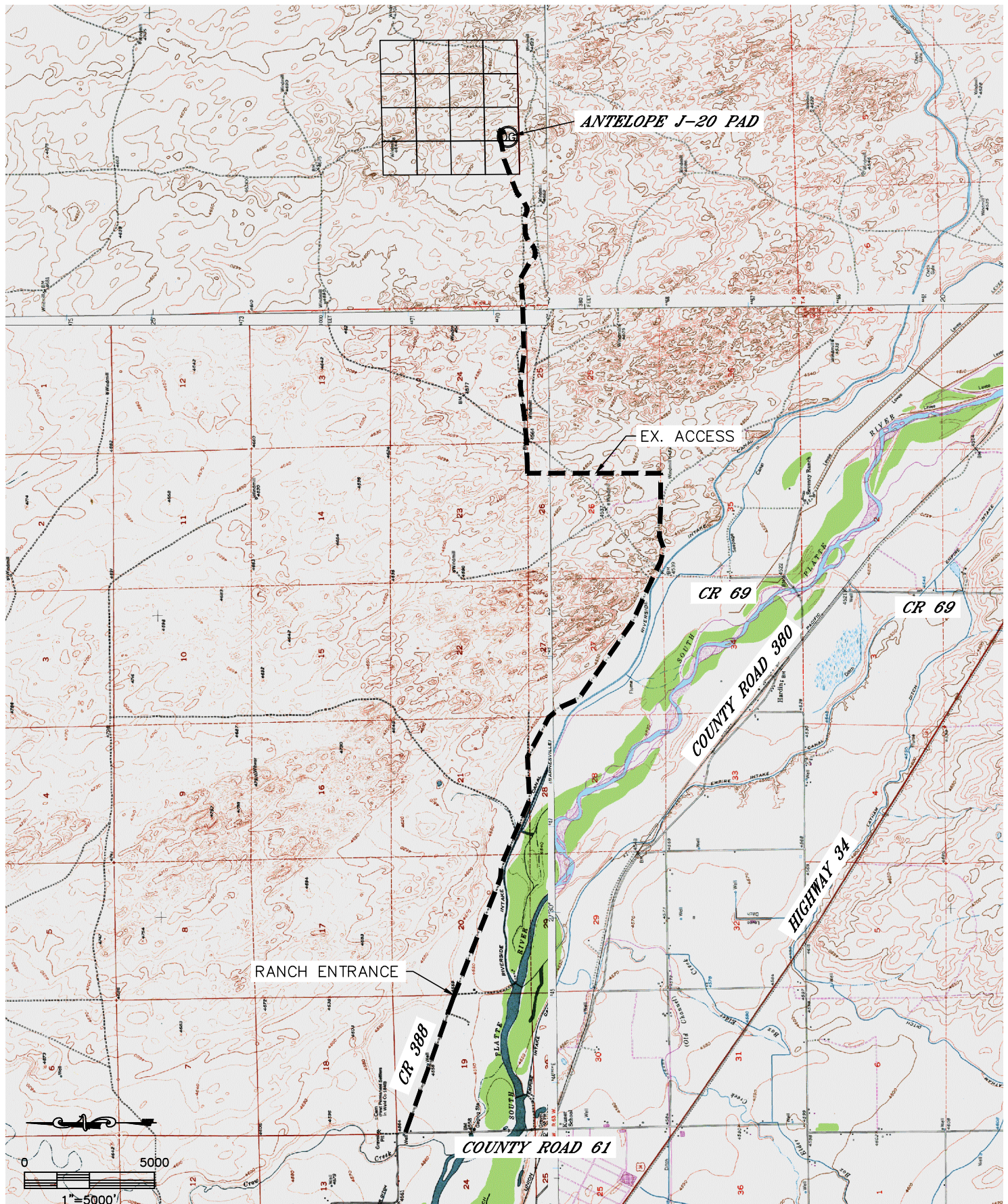


Lat40°, Inc. 1635 Foxtrail Drive, Suite 325 Loveland, CO 970-776-3321

# ACCESS ROAD MAP

ANTELOPE J-20 PAD

SECTION: 20  
TOWNSHIP: 5N  
RANGE: 62W





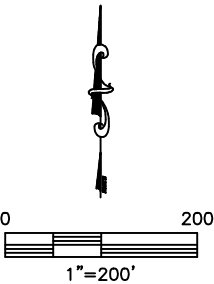
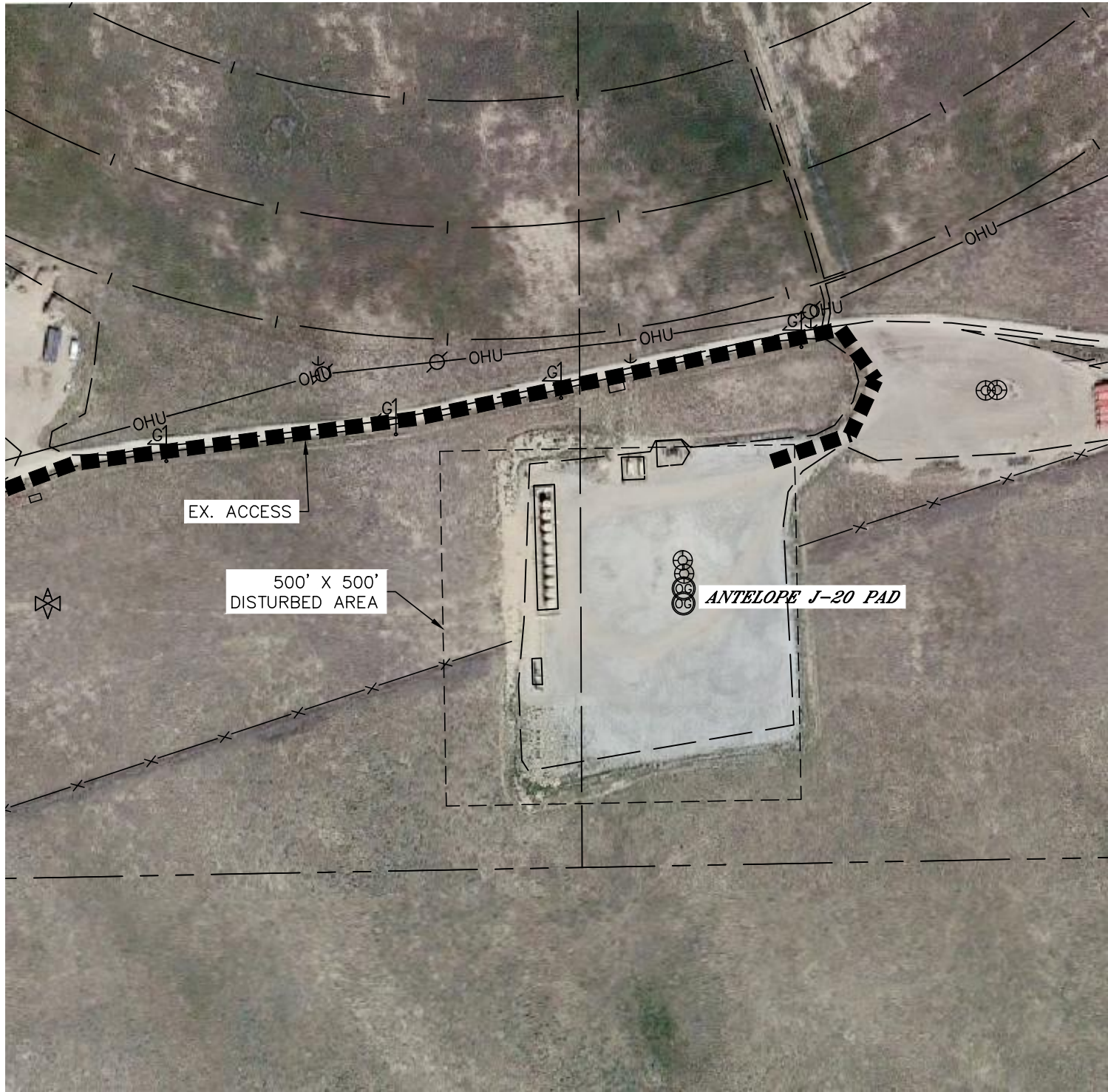


Lat40°, Inc. 1635 Foxtrail Drive, Suite 325 Loveland, CO 970-776-3321

# ACCESS ROAD MAP

ANTELOPE J-20 PAD

SECTION: 20  
TOWNSHIP: 5N  
RANGE: 62W





Lat40°, Inc. 1635 Foxtrail Drive, Suite 325 Loveland, CO 970-776-3321

## ACCESS ROAD MAP

ANTELOPE J-20 PAD

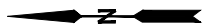
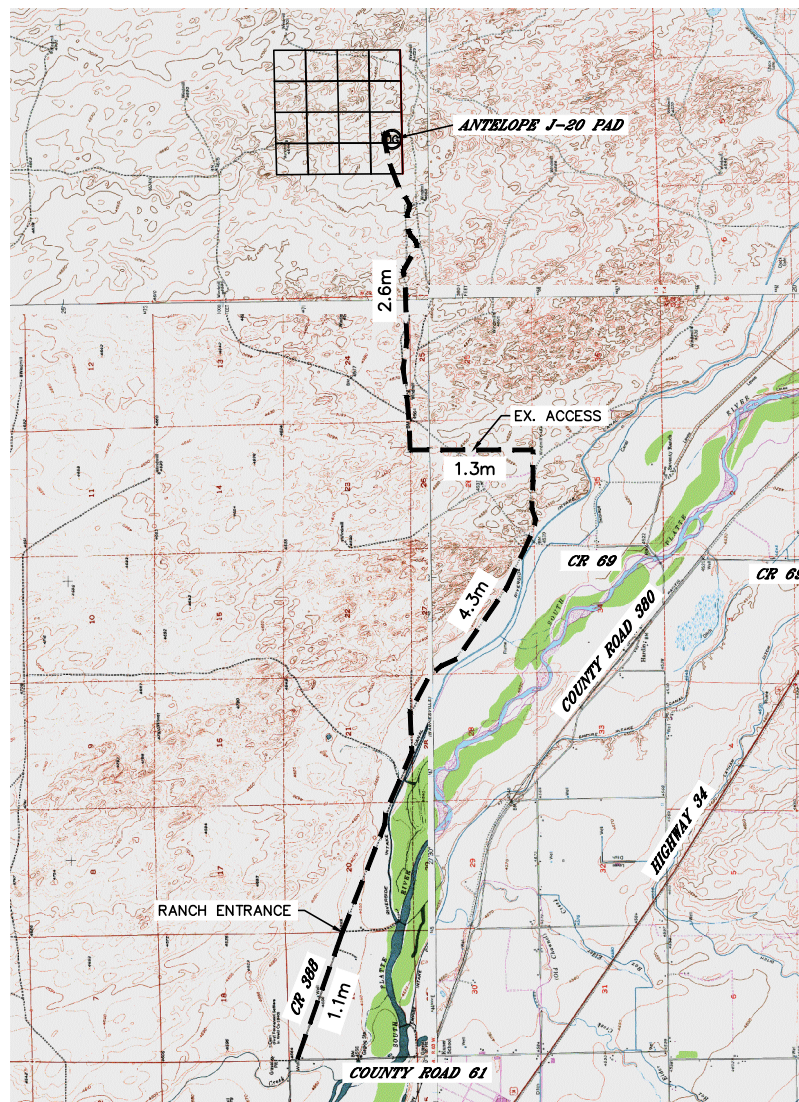
SECTION: 20  
TOWNSHIP: 5N  
RANGE: 62W

EXISTING WELLS:  
ANTELOPE J-F-20HZ  
ANTELOPE O-K-20HZ

PROPOSED WELLS:  
ANTELOPE 24-21-20HC  
ANTELOPE 034-K31-20HNB

### DRIVING DIRECTIONS TO ANTELOPE J-20 PAD:

FROM THE INTERSECTION OF WELD COUNTY ROAD 61 AND WELD COUNTY ROAD 388, DRIVE SOUTHEASTERLY ON COUNTY ROAD 388 FOR 1.1 MILES TO THE ENTRANCE OF 70 RANCH (YELLOW GATE), CONTINUE ALONG THE 70 RANCH MAIN ACCESS ROAD SOUTHEASTERLY FOR 4.3 MILES, CONTINUE ALONG MAIN ACCESS ROAD NORTH FOR 1.3 MILES, CONTINUE ALONG MAIN ACCESS ROAD EAST 2.6 MILES TO THE ANTELOPE 24-20 PAD, DRIVE SOUTHWEST 300' THROUGH THE 24-20 PAD TO THE ANTELOPE J-20 PAD.



NOT TO SCALE

**SHEET 3 OF 3**

DATE: rev11/11/2013  
PROJECT#: 2012071