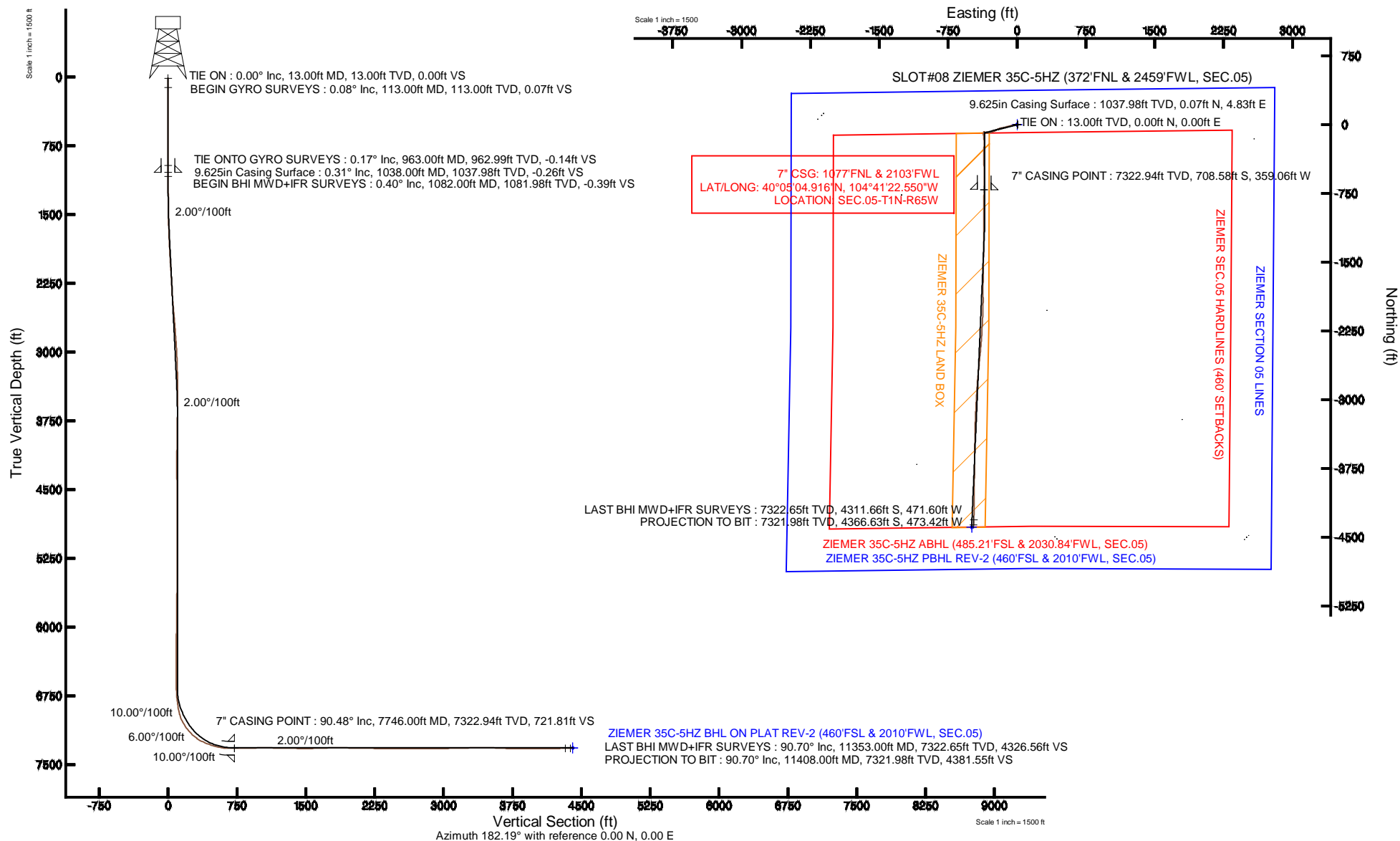


KERR-MCGEE OIL & GAS ONSHORE LP

Location: COLORADO Slot: SLOT#08 ZIEMER 35C-5HZ (372'FNL & 2459'FWL, SEC.05)
 Field: WELD COUNTY (KERR MCGEE) Well: ZIEMER 35C-5HZ
 Facility: SEC.05-T1N-R65W Wellbore: ZIEMER 35C-5HZ PWB

Plot reference wellpath is ZIEMER 35C-5HZ (REV-A.0) PWP

True vertical depths are referenced to ENSIGN 138 (13' RKB) (RKB)	Grid System: NAD83 / Lambert Colorado SP, Northern Zone (501), US feet
Measured depths are referenced to ENSIGN 138 (13' RKB) (RKB)	North Reference: True north
ENSGN 138 (13' RKB) (RKB) to Mean Sea Level: 4957 feet	Scale: True distance
Mean Sea Level to Mud line (At Slot: SLOT#08 ZIEMER 35C-5HZ (372'FNL & 2459'FWL, SEC.05)): 0 feet	Depths are in feet
Coordinates are in feet referenced to Slot	Created by: robale01 on 30/Dec/2013





Actual Wellpath Report

ZIEMER 35C-5HZ AWP

Page 1 of 6



REFERENCE WELLPATH IDENTIFICATION

Operator	KERR-MCGEE OIL & GAS ONSHORE LP	Slot	SLOT#08 ZIEMER 35C-5HZ (372'FNL & 2459'FWL, SEC.05)
Area	COLORADO	Well	ZIEMER 35C-5HZ
Field	WELD COUNTY (KERR MCGEE)	Wellbore	ZIEMER 35C-5HZ AWB
Facility	SEC.05-T1N-R65W		

REPORT SETUP INFORMATION

Projection System	NAD83 / Lambert Colorado SP, Northern Zone (501), US feet	Software System	WellArchitect® 4.0.0
North Reference	True	User	Robiale01
Scale	0.999961	Report Generated	24/Oct/2013 at 10:04
Convergence at slot	n/a	Database/Source file	WA_ANADARKO/ZIEMER_35C-5HZ_AWB.xml

WELLPATH LOCATION

	Local coordinates		Grid coordinates		Geographic coordinates	
	North[ft]	East[ft]	Easting[US ft]	Northing[US ft]	Latitude	Longitude
Slot Location	2212.55	-151.26	3227104.70	1275448.49	40°05'11.918"N	104°41'17.930"W
Facility Reference Pt			3227276.21	1273237.51	40°04'50.053"N	104°41'15.984"W
Field Reference Pt			3197771.84	1268891.29	40°04'09.600"N	104°47'36.000"W

WELLPATH DATUM

Calculation method	Minimum curvature	ENSIGN 138 (13' RKB) (RKB) to Facility Vertical Datum	4957.00ft
Horizontal Reference Pt	Slot	ENSIGN 138 (13' RKB) (RKB) to Mean Sea Level	4957.00ft
Vertical Reference Pt	ENSIGN 138 (13' RKB) (RKB)	ENSIGN 138 (13' RKB) (RKB) to Mud Line at Slot (SLOT#08 ZIEMER 35C-5HZ (372'FNL & 2459'FWL, SEC.05))	4957.00ft
MD Reference Pt	ENSIGN 138 (13' RKB) (RKB)	Section Origin	N 0.00, E 0.00 ft
Field Vertical Reference	Mean Sea Level	Section Azimuth	186.19°

Actual Wellpath Report

ZIEMER 35C-5HZ AWP

Page 2 of 6

REFERENCE WELLPATH IDENTIFICATION			
Operator	KERR-MCGEE OIL & GAS ONSHORE LP	Slot	SLOT#08 ZIEMER 35C-5HZ (372'FNL & 2459'FWL, SEC.05)
Area	COLORADO	Well	ZIEMER 35C-5HZ
Field	WELD COUNTY (KERR MCGEE)	Wellbore	ZIEMER 35C-5HZ AWB
Facility	SEC.05-T1N-R65W		

WELLPATH DATA (115 stations) † = interpolated/extrapolated station										
MD [ft]	Inclination [°]	Azimuth [°]	TVD [ft]	Vert Sect [ft]	North [ft]	East [ft]	Latitude	Longitude	DLS [°/100ft]	Comments
0.00†	0.000	192.240	0.00	0.00	0.00	0.00	40°05'11.918"N	104°41'17.930"W	0.00	
13.00	0.000	192.240	13.00	0.00	0.00	0.00	40°05'11.918"N	104°41'17.930"W	0.00	TIE ON
113.00	0.080	192.240	113.00	0.07	-0.07	-0.01	40°05'11.917"N	104°41'17.930"W	0.08	BEGIN GYRO SURVEYS
213.00	0.110	76.740	213.00	0.11	-0.11	0.06	40°05'11.917"N	104°41'17.929"W	0.16	
313.00	0.240	82.250	313.00	0.02	-0.06	0.36	40°05'11.917"N	104°41'17.925"W	0.13	
413.00	0.380	90.160	413.00	-0.06	-0.04	0.90	40°05'11.918"N	104°41'17.918"W	0.15	
513.00	0.560	97.790	512.99	-0.08	-0.10	1.72	40°05'11.917"N	104°41'17.908"W	0.19	
613.00	0.340	98.240	612.99	-0.06	-0.21	2.50	40°05'11.916"N	104°41'17.898"W	0.22	
713.00	0.310	75.270	712.99	-0.14	-0.19	3.05	40°05'11.916"N	104°41'17.891"W	0.13	
813.00	0.440	97.410	812.99	-0.23	-0.17	3.70	40°05'11.916"N	104°41'17.882"W	0.19	
913.00	0.320	65.990	912.99	-0.36	-0.10	4.33	40°05'11.917"N	104°41'17.874"W	0.24	
963.00	0.170	79.690	962.99	-0.46	-0.03	4.53	40°05'11.918"N	104°41'17.872"W	0.32	TIE ONTO GYRO SURVEYS
1082.00	0.400	61.900	1081.98	-0.74	0.19	5.07	40°05'11.920"N	104°41'17.865"W	0.20	BEGIN BHI MWD+IFR SURVEYS
1173.00	0.700	265.400	1172.98	-0.81	0.30	4.80	40°05'11.921"N	104°41'17.868"W	1.19	
1264.00	2.300	256.300	1263.95	-0.09	-0.18	2.47	40°05'11.916"N	104°41'17.898"W	1.77	
1356.00	3.500	261.700	1355.83	1.24	-1.02	-2.10	40°05'11.908"N	104°41'17.957"W	1.34	
1447.00	5.000	266.100	1446.58	2.63	-1.69	-8.81	40°05'11.901"N	104°41'18.043"W	1.69	
1539.00	6.700	263.700	1538.09	4.49	-2.55	-18.14	40°05'11.893"N	104°41'18.163"W	1.87	
1631.00	8.800	261.900	1629.25	7.39	-4.13	-30.45	40°05'11.877"N	104°41'18.322"W	2.30	
1738.00	10.000	258.600	1734.81	12.22	-7.12	-47.66	40°05'11.848"N	104°41'18.543"W	1.23	
1829.00	10.900	255.100	1824.30	17.70	-10.90	-63.72	40°05'11.810"N	104°41'18.750"W	1.21	
1921.00	11.000	255.900	1914.63	23.87	-15.27	-80.64	40°05'11.767"N	104°41'18.967"W	0.20	
2012.00	11.300	254.400	2003.91	30.19	-19.78	-97.64	40°05'11.722"N	104°41'19.186"W	0.46	
2104.00	11.800	254.800	2094.05	36.97	-24.68	-115.40	40°05'11.674"N	104°41'19.415"W	0.55	
2195.00	11.900	257.800	2183.11	43.32	-29.10	-133.55	40°05'11.630"N	104°41'19.648"W	0.69	
2287.00	11.800	258.200	2273.15	49.22	-33.03	-152.03	40°05'11.592"N	104°41'19.886"W	0.14	
2378.00	12.600	254.800	2362.09	55.71	-37.53	-170.72	40°05'11.547"N	104°41'20.126"W	1.18	
2470.00	11.600	249.900	2452.05	63.47	-43.34	-189.09	40°05'11.490"N	104°41'20.363"W	1.56	
2560.00	11.900	249.000	2540.16	71.72	-49.78	-206.25	40°05'11.426"N	104°41'20.584"W	0.39	
2652.00	10.900	245.200	2630.35	80.53	-56.82	-223.00	40°05'11.356"N	104°41'20.799"W	1.36	
2744.00	10.300	245.700	2720.78	89.18	-63.86	-238.39	40°05'11.287"N	104°41'20.997"W	0.66	
2835.00	8.800	243.600	2810.51	97.06	-70.30	-252.04	40°05'11.223"N	104°41'21.173"W	1.69	
2926.00	8.900	246.000	2900.43	104.35	-76.26	-264.71	40°05'11.164"N	104°41'21.336"W	0.42	
3018.00	8.800	250.700	2991.34	110.95	-81.48	-277.85	40°05'11.113"N	104°41'21.505"W	0.79	
3109.00	8.900	259.100	3081.26	116.02	-85.11	-291.34	40°05'11.077"N	104°41'21.678"W	1.42	
3201.00	8.600	262.000	3172.19	119.79	-87.41	-305.14	40°05'11.054"N	104°41'21.856"W	0.58	
3292.00	7.900	266.800	3262.25	122.48	-88.71	-318.12	40°05'11.041"N	104°41'22.023"W	1.08	
3386.00	6.600	273.000	3355.49	123.84	-88.79	-329.96	40°05'11.041"N	104°41'22.175"W	1.61	
3480.00	5.000	279.000	3449.01	123.94	-87.86	-339.40	40°05'11.050"N	104°41'22.297"W	1.82	
3574.00	3.100	272.200	3542.77	123.91	-87.13	-345.99	40°05'11.057"N	104°41'22.381"W	2.08	
3669.00	1.500	274.600	3637.69	124.13	-86.93	-349.80	40°05'11.059"N	104°41'22.430"W	1.69	
3763.00	0.500	355.900	3731.68	123.76	-86.42	-351.05	40°05'11.064"N	104°41'22.447"W	1.60	
4141.00	1.400	325.700	4109.63	118.62	-80.96	-353.77	40°05'11.118"N	104°41'22.482"W	0.26	
4237.00	0.500	245.200	4205.61	117.94	-80.17	-354.81	40°05'11.126"N	104°41'22.495"W	1.47	
4615.00	1.200	221.000	4583.57	122.04	-83.85	-358.91	40°05'11.089"N	104°41'22.548"W	0.20	

REFERENCE WELLPATH IDENTIFICATION

Operator	KERR-MCGEE OIL & GAS ONSHORE LP	Slot	SLOT#08 ZIEMER 35C-5HZ (372'FNL & 2459'FWL, SEC.05)
Area	COLORADO	Well	ZIEMER 35C-5HZ
Field	WELD COUNTY (KERR MCGEE)	Wellbore	ZIEMER 35C-5HZ AWP
Facility	SEC.05-T1N-R65W		

WELLPATH DATA (115 stations) † = interpolated/extrapolated station

MD [ft]	Inclination [°]	Azimuth [°]	TVD [ft]	Vert Sect [ft]	North [ft]	East [ft]	Latitude	Longitude	DLS [°/100ft]	Comments
4709.00	1.300	239.800	4677.55	123.48	-85.13	-360.48	40°05'11.077"N	104°41'22.568"W	0.45	
4803.00	0.300	343.600	4771.54	123.89	-85.43	-361.47	40°05'11.074"N	104°41'22.581"W	1.49	
4994.00	0.400	247.500	4962.54	123.75	-85.20	-362.22	40°05'11.076"N	104°41'22.590"W	0.27	
5184.00	0.700	69.200	5152.54	123.54	-85.04	-361.75	40°05'11.078"N	104°41'22.584"W	0.58	
5373.00	0.400	17.700	5341.53	122.37	-84.00	-360.47	40°05'11.088"N	104°41'22.568"W	0.29	
5752.00	1.000	322.800	5720.50	118.67	-80.11	-362.07	40°05'11.126"N	104°41'22.588"W	0.22	
5847.00	0.400	327.200	5815.49	117.81	-79.17	-362.75	40°05'11.136"N	104°41'22.597"W	0.63	
6129.00	1.000	2.600	6097.47	114.59	-75.88	-363.17	40°05'11.168"N	104°41'22.603"W	0.25	
6223.00	0.700	135.000	6191.47	114.13	-75.47	-362.73	40°05'11.172"N	104°41'22.597"W	1.66	
6606.00	0.700	330.500	6574.46	113.70	-75.09	-362.23	40°05'11.176"N	104°41'22.590"W	0.36	
6701.00	1.200	188.200	6669.45	114.22	-75.57	-362.65	40°05'11.171"N	104°41'22.596"W	1.90	
6796.00	5.000	190.400	6764.29	119.34	-80.63	-363.54	40°05'11.121"N	104°41'22.607"W	4.00	
6890.00	9.200	183.400	6857.55	130.94	-92.16	-364.73	40°05'11.007"N	104°41'22.623"W	4.55	
6948.00	11.000	181.500	6914.65	141.09	-102.32	-365.15	40°05'10.907"N	104°41'22.628"W	3.16	
6985.00	14.800	178.400	6950.71	149.29	-110.58	-365.11	40°05'10.825"N	104°41'22.627"W	10.44	
7031.00	20.900	174.600	6994.48	163.16	-124.63	-364.17	40°05'10.686"N	104°41'22.615"W	13.49	
7079.00	28.300	173.300	7038.09	182.67	-144.49	-362.04	40°05'10.490"N	104°41'22.588"W	15.46	
7126.00	34.800	175.600	7078.13	206.74	-168.95	-359.71	40°05'10.248"N	104°41'22.558"W	14.06	
7174.00	38.700	179.600	7116.58	235.12	-197.63	-358.55	40°05'09.965"N	104°41'22.543"W	9.53	
7221.00	43.200	182.500	7152.08	265.79	-228.41	-359.15	40°05'09.661"N	104°41'22.551"W	10.39	
7269.00	48.700	181.900	7185.44	300.19	-262.87	-360.46	40°05'09.320"N	104°41'22.568"W	11.49	
7316.00	54.600	182.000	7214.59	336.94	-299.69	-361.72	40°05'08.956"N	104°41'22.584"W	12.55	
7363.00	60.900	180.800	7239.65	376.52	-339.41	-362.67	40°05'08.564"N	104°41'22.596"W	13.58	
7410.00	66.700	179.000	7260.40	418.42	-381.56	-362.58	40°05'08.147"N	104°41'22.595"W	12.81	
7458.00	69.600	176.600	7278.26	462.48	-426.07	-360.87	40°05'07.707"N	104°41'22.573"W	7.62	
7505.00	72.800	177.600	7293.41	506.41	-470.50	-358.62	40°05'07.268"N	104°41'22.544"W	7.10	
7554.00	78.300	178.600	7305.63	553.37	-517.90	-357.05	40°05'06.800"N	104°41'22.524"W	11.40	
7601.00	80.400	180.800	7314.32	599.26	-564.09	-356.81	40°05'06.344"N	104°41'22.521"W	6.41	
7649.00	84.700	180.600	7320.54	646.63	-611.67	-357.39	40°05'05.873"N	104°41'22.528"W	8.97	
7676.00	87.600	181.100	7322.35	673.45	-638.60	-357.79	40°05'05.607"N	104°41'22.533"W	10.90	
7694.00	89.300	181.100	7322.84	691.37	-656.59	-358.14	40°05'05.429"N	104°41'22.538"W	9.44	
7746.00†	90.479	180.939	7322.94	743.16	-708.58	-359.06	40°05'04.916"N	104°41'22.550"W	2.29	7" CASING POINT
7791.00	91.500	180.800	7322.16	787.96	-753.57	-359.75	40°05'04.471"N	104°41'22.558"W	2.29	
7886.00	91.000	180.500	7320.09	882.49	-848.54	-360.82	40°05'03.533"N	104°41'22.572"W	0.61	
7979.00	90.500	180.400	7318.87	975.02	-941.53	-361.55	40°05'02.614"N	104°41'22.582"W	0.55	
8074.00	90.000	180.600	7318.46	1069.55	-1036.52	-362.38	40°05'01.675"N	104°41'22.592"W	0.57	
8170.00	89.500	180.400	7318.88	1165.07	-1132.52	-363.22	40°05'00.726"N	104°41'22.603"W	0.56	
8266.00	88.600	180.300	7320.47	1260.56	-1228.50	-363.81	40°04'59.778"N	104°41'22.610"W	0.94	
8361.00	88.600	180.200	7322.79	1355.02	-1323.47	-364.22	40°04'58.839"N	104°41'22.616"W	0.11	
8455.00	89.700	180.400	7324.18	1448.51	-1417.46	-364.71	40°04'57.910"N	104°41'22.622"W	1.19	
8550.00	90.200	181.000	7324.27	1543.08	-1512.45	-365.87	40°04'56.972"N	104°41'22.637"W	0.82	
8644.00	91.300	181.300	7323.04	1636.71	-1606.42	-367.76	40°04'56.043"N	104°41'22.661"W	1.21	
8739.00	92.400	181.000	7319.97	1731.29	-1701.35	-369.67	40°04'55.105"N	104°41'22.686"W	1.20	
8834.00	90.300	180.000	7317.73	1825.79	-1796.32	-370.50	40°04'54.166"N	104°41'22.696"W	2.45	
8928.00	89.200	179.300	7318.14	1919.17	-1890.31	-369.92	40°04'53.238"N	104°41'22.689"W	1.39	

Actual Wellpath Report

ZIEMER 35C-5HZ AWP

Page 4 of 6

REFERENCE WELLPATH IDENTIFICATION

Operator	KERR-MCGEE OIL & GAS ONSHORE LP	Slot	SLOT#08 ZIEMER 35C-5HZ (372'FNL & 2459'FWL, SEC.05)
Area	COLORADO	Well	ZIEMER 35C-5HZ
Field	WELD COUNTY (KERR MCGEE)	Wellbore	ZIEMER 35C-5HZ AWB
Facility	SEC.05-T1N-R65W		

WELLPATH DATA (115 stations)

MD [ft]	Inclination [°]	Azimuth [°]	TVD [ft]	Vert Sect [ft]	North [ft]	East [ft]	Latitude	Longitude	DLS [°/100ft]	Comments
9023.00	89.700	181.500	7319.05	2013.68	-1985.30	-370.58	40°04'52.299"N	104°41'22.698"W	2.37	
9117.00	89.100	182.800	7320.04	2107.44	-2079.23	-374.11	40°04'51.371"N	104°41'22.743"W	1.52	
9212.00	88.300	182.800	7322.19	2202.25	-2174.09	-378.75	40°04'50.433"N	104°41'22.803"W	0.84	
9306.00	88.800	182.800	7324.57	2296.05	-2267.95	-383.34	40°04'49.506"N	104°41'22.862"W	0.53	
9400.00	90.400	185.000	7325.23	2389.97	-2361.72	-389.73	40°04'48.579"N	104°41'22.944"W	2.89	
9496.00	90.100	185.200	7324.81	2485.95	-2457.34	-398.27	40°04'47.634"N	104°41'23.054"W	0.38	
9591.00	89.400	185.000	7325.22	2580.93	-2551.96	-406.71	40°04'46.699"N	104°41'23.162"W	0.77	
9688.00	90.800	186.000	7325.05	2677.92	-2648.51	-416.01	40°04'45.745"N	104°41'23.282"W	1.77	
9783.00	89.800	185.700	7324.56	2772.91	-2743.01	-425.69	40°04'44.811"N	104°41'23.406"W	1.10	
9877.00	89.900	183.800	7324.80	2866.88	-2836.68	-433.47	40°04'43.885"N	104°41'23.506"W	2.02	
9972.00	89.900	183.500	7324.97	2961.79	-2931.49	-439.52	40°04'42.948"N	104°41'23.584"W	0.32	
10066.00	91.100	182.700	7324.15	3055.64	-3025.35	-444.61	40°04'42.021"N	104°41'23.650"W	1.53	
10161.00	92.000	183.200	7321.58	3150.46	-3120.18	-449.49	40°04'41.084"N	104°41'23.712"W	1.08	
10256.00	90.600	182.000	7319.42	3245.24	-3215.06	-453.80	40°04'40.146"N	104°41'23.768"W	1.94	
10350.00	91.000	181.400	7318.11	3338.94	-3309.01	-456.59	40°04'39.218"N	104°41'23.804"W	0.77	
10445.00	90.600	181.000	7316.78	3433.57	-3403.98	-458.58	40°04'38.279"N	104°41'23.829"W	0.60	
10635.00	86.900	180.800	7320.93	3622.69	-3593.87	-461.56	40°04'36.403"N	104°41'23.868"W	1.95	
10731.00	89.200	180.500	7324.19	3718.18	-3689.81	-462.65	40°04'35.455"N	104°41'23.882"W	2.42	
10825.00	90.300	180.900	7324.61	3811.74	-3783.80	-463.80	40°04'34.526"N	104°41'23.896"W	1.25	
10921.00	90.100	180.600	7324.27	3907.31	-3879.79	-465.05	40°04'33.577"N	104°41'23.912"W	0.38	
11015.00	89.600	180.000	7324.52	4000.81	-3973.79	-465.55	40°04'32.648"N	104°41'23.919"W	0.83	
11110.00	89.300	180.200	7325.43	4095.27	-4068.78	-465.71	40°04'31.710"N	104°41'23.921"W	0.38	
11299.00	91.700	182.200	7323.78	4283.53	-4257.71	-469.67	40°04'29.843"N	104°41'23.972"W	1.65	
11353.00	90.700	181.900	7322.65	4337.37	-4311.66	-471.60	40°04'29.309"N	104°41'23.997"W	1.93	LAST BHI MWD+IFR SURVEY
11408.00	90.700	181.900	7321.98	4392.22	-4366.63	-473.42	40°04'28.766"N	104°41'24.020"W	0.00	PROJECTION TO BIT

HOLE & CASING SECTIONS - Ref Wellbore: ZIEMER 35C-5HZ AWB Ref Wellpath: ZIEMER 35C-5HZ AWP

String/Diameter	Start MD [ft]	End MD [ft]	Interval [ft]	Start TVD [ft]	End TVD [ft]	Start N/S [ft]	Start E/W [ft]	End N/S [ft]	End E/W [ft]
13.5in Open Hole	13.00	1038.00	1025.00	13.00	1037.98	0.00	0.00	0.07	4.83
9.625in Casing Surface	13.00	1038.00	1025.00	13.00	1037.98	0.00	0.00	0.07	4.83
8.75in Open Hole	1038.00	7750.00	6712.00	1037.98	7322.90	0.07	4.83	-712.58	-359.13
7in Casing Intermediate	13.00	7746.00	7733.00	13.00	7322.94	0.00	0.00	-708.58	-359.06
6.125in Open Hole	7750.00	11408.00	3658.00	7322.90	7321.98	-712.58	-359.13	-4366.63	-473.42

REFERENCE WELLPATH IDENTIFICATION

Operator	KERR-MCGEE OIL & GAS ONSHORE LP	Slot	SLOT#08 ZIEMER 35C-5HZ (372'FNL & 2459'FWL, SEC.05)
Area	COLORADO	Well	ZIEMER 35C-5HZ
Field	WELD COUNTY (KERR MCGEE)	Wellbore	ZIEMER 35C-5HZ AWB
Facility	SEC.05-T1N-R65W		

TARGETS

Name	MD [ft]	TVD [ft]	North [ft]	East [ft]	Grid East [US ft]	Grid North [US ft]	Latitude	Longitude	Shape
ZIEMER SECTION 05 LINES		0.00	0.00	0.00	3227104.70	1275448.49	40°05'11.918"N	104°41'17.930"W	polygon
ZIEMER SEC.05 HARDLINES (460' SETBACKS)		200.00	0.00	0.00	3227104.70	1275448.49	40°05'11.918"N	104°41'17.930"W	polygon
ZIEMER 35C-5HZ BHL ON PLAT REV-2 (460'FSL & 2010'FWL, SEC.05)		7317.00	-4391.84	-494.26	3226650.68	1271052.49	40°04'28.517"N	104°41'24.288"W	point
ZIEMER 35C-5HZ BHL ON PLAT REV-1 (460'FSL & 2010'FWL, SEC.05)		7320.00	-4391.86	-494.26	3226650.68	1271052.47	40°04'28.517"N	104°41'24.288"W	point
ZIEMER 35C-5HZ LAND BOX		7400.00	0.00	0.00	3227104.70	1275448.49	40°05'11.918"N	104°41'17.930"W	polygon

WELLPATH COMPOSITION - Ref Wellbore: ZIEMER 35C-5HZ AWB Ref Wellpath: ZIEMER 35C-5HZ AWP

Start MD [ft]	End MD [ft]	Positional Uncertainty Model	Log Name/Comment	Wellbore
13.00	963.00	Generic gyro - continuous (Standard)	MS ENERGY SERVICES GYRO SURVEYS <113-963>	ZIEMER 35C-5HZ AWB
963.00	7694.00	NaviTrak (MAGCORR,IFR)	BHI MWD+IFR SURVEYS 8 3/4" HOLE <1082-7694>	ZIEMER 35C-5HZ AWB
7694.00	11353.00	OnTrak (MAGCORR,IFR)	BHI MWD+IFR SURVEYS 6 1/8" HOLE <7791-11353>	ZIEMER 35C-5HZ AWB
11353.00	11408.00	Blind Drilling (std)	Projection to bit	ZIEMER 35C-5HZ AWB

REFERENCE WELLPATH IDENTIFICATION

Operator	KERR-MCGEE OIL & GAS ONSHORE LP	Slot	SLOT#08 ZIEMER 35C-5HZ (372'FNL & 2459'FWL, SEC.05)
Area	COLORADO	Well	ZIEMER 35C-5HZ
Field	WELD COUNTY (KERR MCGEE)	Wellbore	ZIEMER 35C-5HZ AWB
Facility	SEC.05-T1N-R65W		

WELLPATH COMMENTS

MD [ft]	Inclination [°]	Azimuth [°]	TVD [ft]	Comment
13.00	0.000	192.240	13.00	TIE ON
113.00	0.080	192.240	113.00	BEGIN GYRO SURVEYS
963.00	0.170	79.690	962.99	TIE ONTO GYRO SURVEYS
1082.00	0.400	61.900	1081.98	BEGIN BHI MWD+IFR SURVEYS
7746.00	90.479	180.939	7322.94	7" CASING POINT
11353.00	90.700	181.900	7322.65	LAST BHI MWD+IFR SURVEY
11408.00	90.700	181.900	7321.98	PROJECTION TO BIT