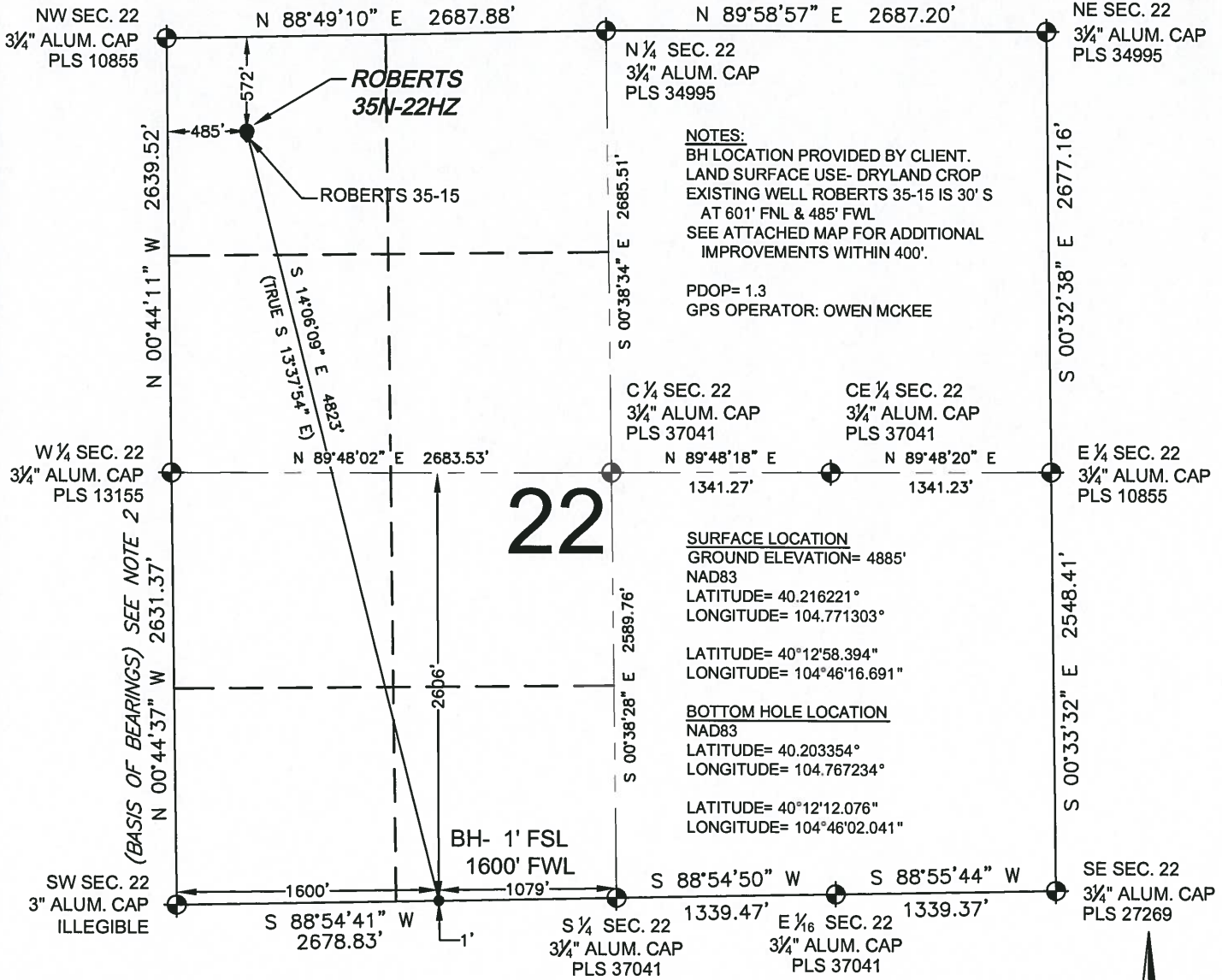


# WELL LOCATION CERTIFICATE: ROBERTS 35N-22HZ

## SECTION 22, TOWNSHIP 3 NORTH, RANGE 66 WEST, 6TH P.M.



**NOTES:**  
 BH LOCATION PROVIDED BY CLIENT.  
 LAND SURFACE USE- DRYLAND CROP  
 EXISTING WELL ROBERTS 35-15 IS 30' S  
 AT 601' FNL & 485' FWL  
 SEE ATTACHED MAP FOR ADDITIONAL  
 IMPROVEMENTS WITHIN 400'.  
 PDOP= 1.3  
 GPS OPERATOR: OWEN MCKEE

**SURFACE LOCATION**  
 GROUND ELEVATION= 4885'  
 NAD83  
 LATITUDE= 40.216221°  
 LONGITUDE= 104.771303°  
 LATITUDE= 40°12'58.394"  
 LONGITUDE= 104°46'16.691"

**BOTTOM HOLE LOCATION**  
 NAD83  
 LATITUDE= 40.203354°  
 LONGITUDE= 104.767234°  
 LATITUDE= 40°12'12.076"  
 LONGITUDE= 104°46'02.041"

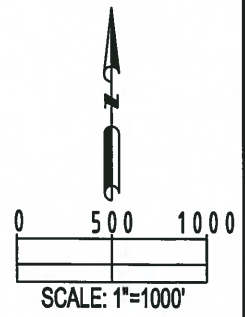
**LEGEND**

= EXISTING MONUMENT    
 = PROPOSED WELL  
 = BOTTOM HOLE    
 = EXISTING WELL  
 BH = BOTTOM HOLE

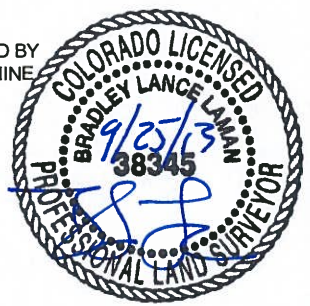
**WELL ROBERTS 35N-22HZ TO BE  
 LOCATED 572' FNL AND 485' FWL**

- NOTES:**
- THIS FIELD SURVEY CONFORMS TO THE MINIMUM STANDARDS SET BY THE C.O.G.C.C., RULE NO. 215
  - BEARINGS AND DISTANCE SHOWN HEREON ARE GRID AND BASED ON THE COLORADO STATE PLANE COORDINATE SYSTEM, NAD 83/2011 BETWEEN MONUMENTS AS LABELED HEREON AND ELEVATIONS SHOWN ARE NAVD 88, AS DERIVED BY GPS OBSERVATIONS.
  - GRID DISTANCES ARE SHOWN, AS MEASURED IN THE FIELD, WITH TIES TO WELLS MEASURED PERPENDICULAR TO SECTION LINES.

I, BRADLEY L. LAMAN, A LICENSED PROFESSIONAL LAND SURVEYOR IN THE STATE OF COLORADO DO HEREBY CERTIFY TO **KERR-MCGEE OIL & GAS ONSHORE LP**, THAT THE SURVEY AND WELL LOCATION CERTIFICATE SHOWN HEREON WERE DONE BY ME OR UNDER MY DIRECT SUPERVISION AND THAT THE DRAWING SHOWN HEREON ACCURATELY DEPICTS THE PROPOSED LOCATION OF THE WELL. THIS CERTIFICATE DOES NOT REPRESENT A LAND SURVEY PLAT OR IMPROVEMENT SURVEY PLAT AS DEFINED BY C.R.S. 38-51-102 AND CANNOT BE RELIED UPON TO DETERMINE OWNERSHIP.



BRADLEY L. LAMAN, PLS 38345  
 COLORADO LICENSED PROFESSIONAL LAND SURVEYOR  
 FOR AND ON BEHALF OF P.F.S., LLC



PREPARED BY: PFS Petroleum Field Services, LLC 1801 W. 13th Ave. Denver, CO 80204	FIELD DATE: 05-10-12 DRAWING DATE: 09-12-13 BY: CLM    CHECKED: JAH	SURFACE LOCATION: NW 1/4 NW 1/4, SEC. 22, T3N, R66W, 6TH P.M. WELD COUNTY, COLORADO
---	---	--

NOTICE: ACCORDING TO COLORADO LAW YOU MUST COMMENCE ANY LEGAL ACTION BASED UPON ANY DEFECT IN THIS SURVEY WITHIN THREE YEARS AFTER YOU FIRST DISCOVER SUCH DEFECT. IN NO EVENT MAY ANY ACTION BASED UPON ANY DEFECT IN THIS SURVEY BE COMMENCED MORE THAN TEN YEARS FROM THIS SAID DATE OF THIS CERTIFICATION SHOWN HEREON.