

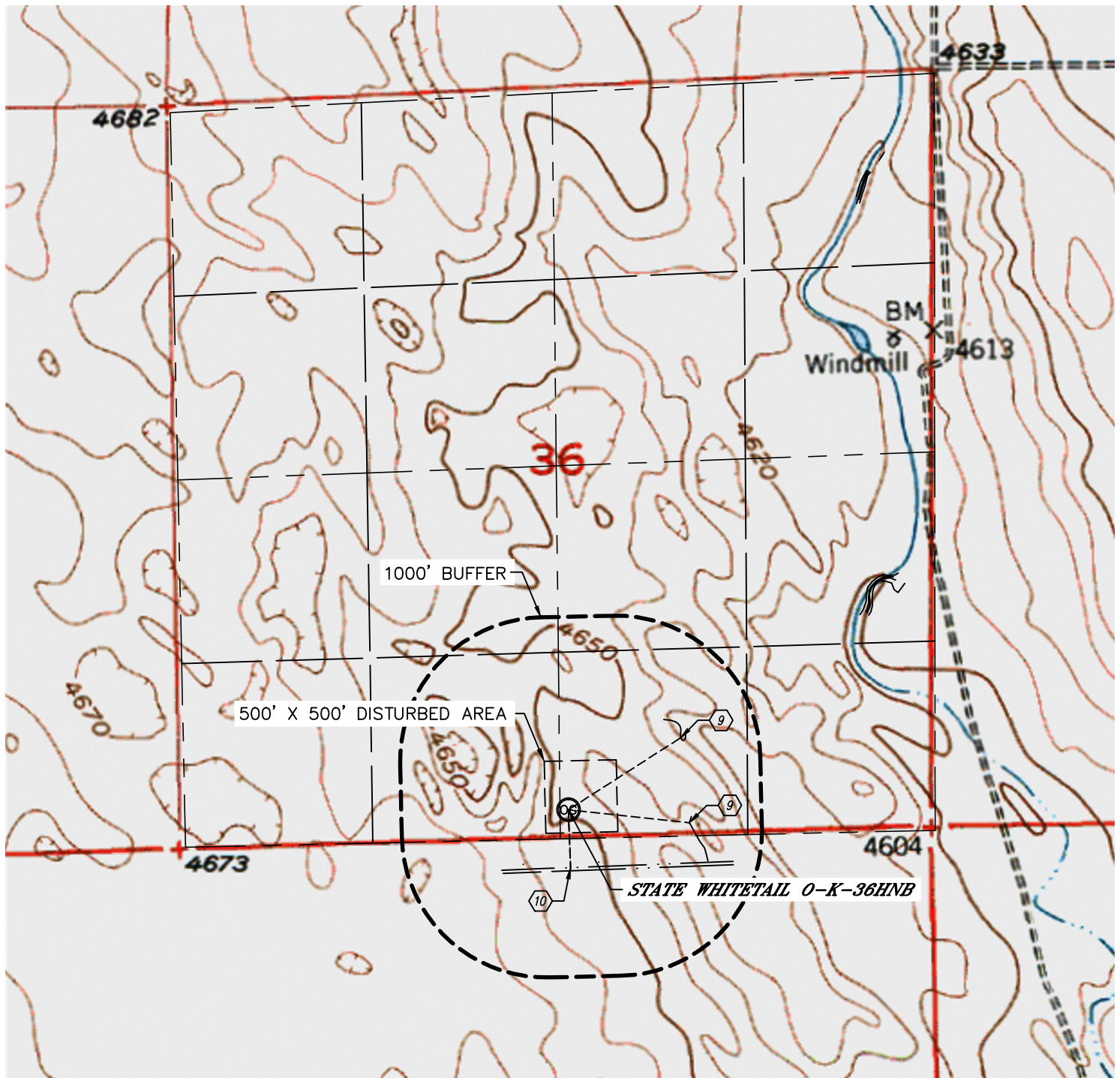


Lat40°, Inc. 1635 Foxtrail Drive, Suite 325 Loveland, CO 970-776-3321

# HYDROLOGY MAP

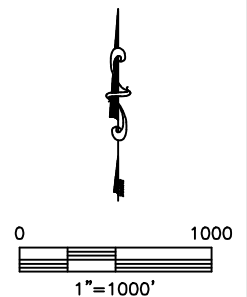
STATE WHITETAIL O-36 PAD

SECTION: 36  
TOWNSHIP: 6N  
RANGE: 62W



9 LOW AREA 845' SE, 925' NE

10 BARROW DITCH 401' & 424' S



DATE: 12/5/2013  
PROJECT#: 2012072