

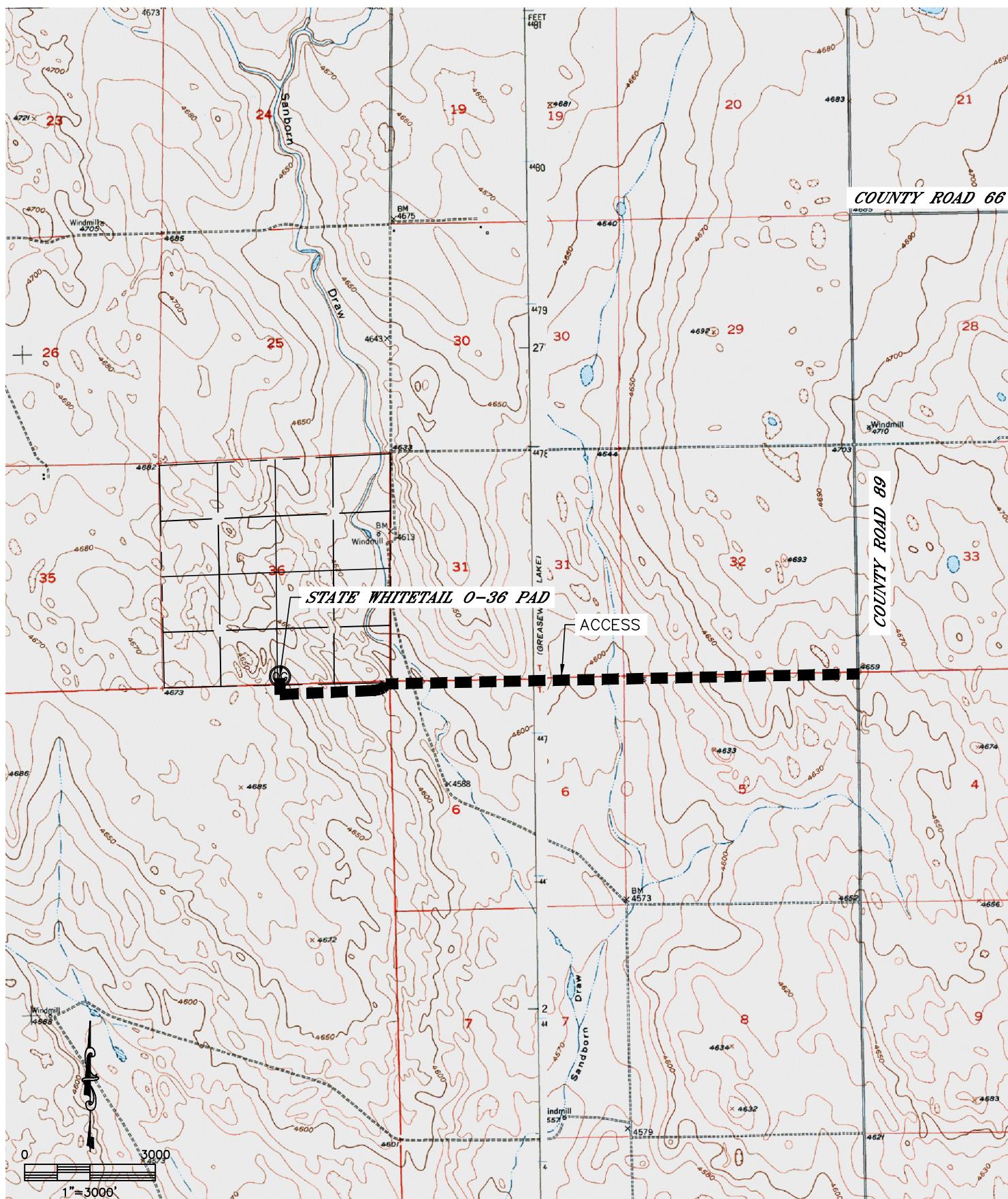


Lat40°, Inc. 1635 Foxtrail Drive, Suite 325 Loveland, CO 970-776-3321

# ACCESS ROAD MAP

STATE WHITETAIL 0-36 PAD

SECTION: 36  
TOWNSHIP: 6N  
RANGE: 62W

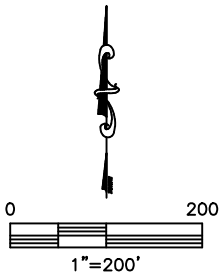






ACCESS ROAD MAP  
STATE WHITETAIL 0-36 PAD

SECTION: 36  
TOWNSHIP: 6N  
RANGE: 62W





Lat40°, Inc. 1635 Foxtrail Drive, Suite 325 Loveland, CO 970-776-3321

# ACCESS ROAD MAP

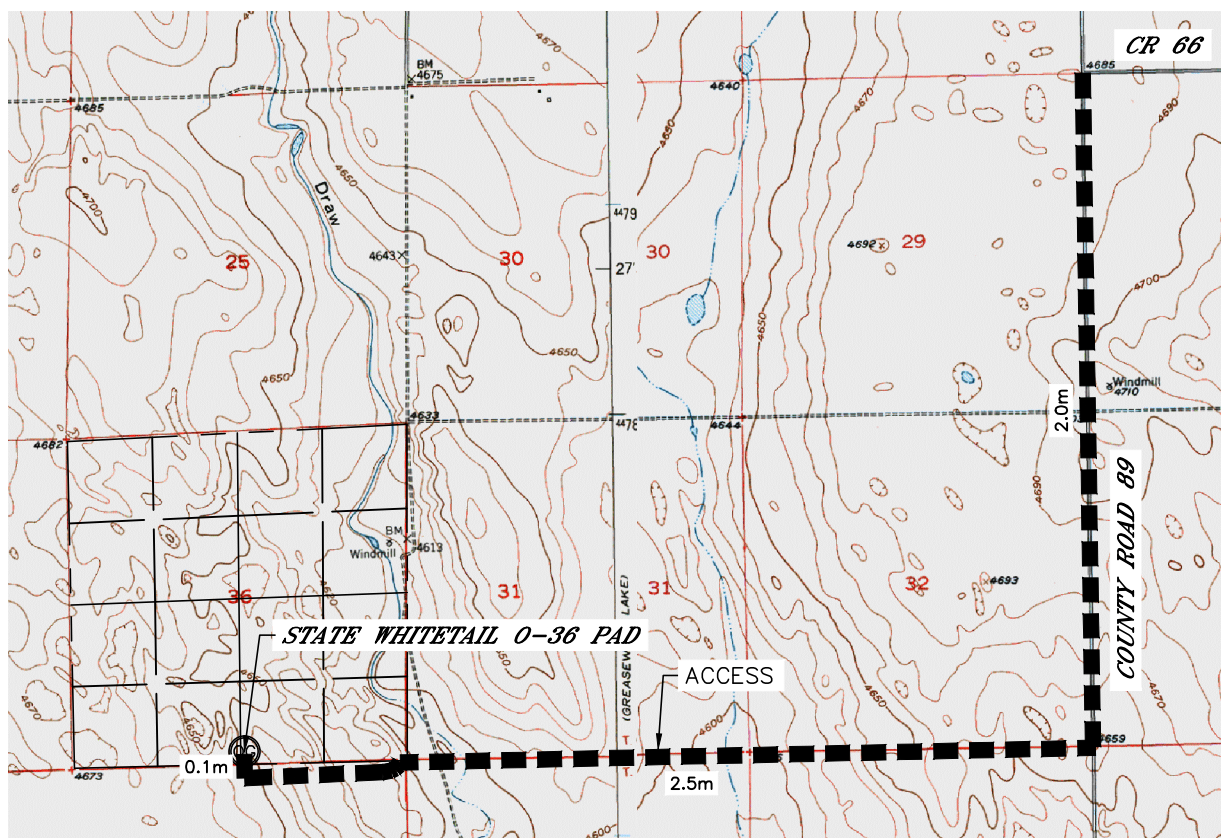
## STATE WHITETAIL O-36 PAD

SECTION: 36  
TOWNSHIP: 6N  
RANGE: 62W

EXISTING WELLS:  
NONE

PROPOSED WELLS:  
STATE WHITETAIL O-K-36HNB  
STATE WHITETAIL 34-31-36HNB

DRIVING DIRECTIONS TO STATE WHITETAIL O-36 PAD  
FROM THE INTERSECTION OF WELD COUNTY ROAD 89 AND WELD COUNTY ROAD 66, DRIVE SOUTH ON  
COUNTY ROAD 89 FOR 2.0 MILES TO AN OIL FIELD ACCESS ROAD TO THE WEST, DRIVE WEST ALONG SAID  
ACCESS ROAD FOR 2.5 MILES, DRIVE NORTH ALONG PAD ACCESS ROAD 0.1 MILES TO THE STATE WHITETAIL  
O-36 PAD SITE.



NOT TO SCALE