



+N/-S
0.00

+E/-W
0.00

Northing
1603175.10

Easting
2281074.50

Latitude
39.46182

Longitude
-108.04667

Slot
A12

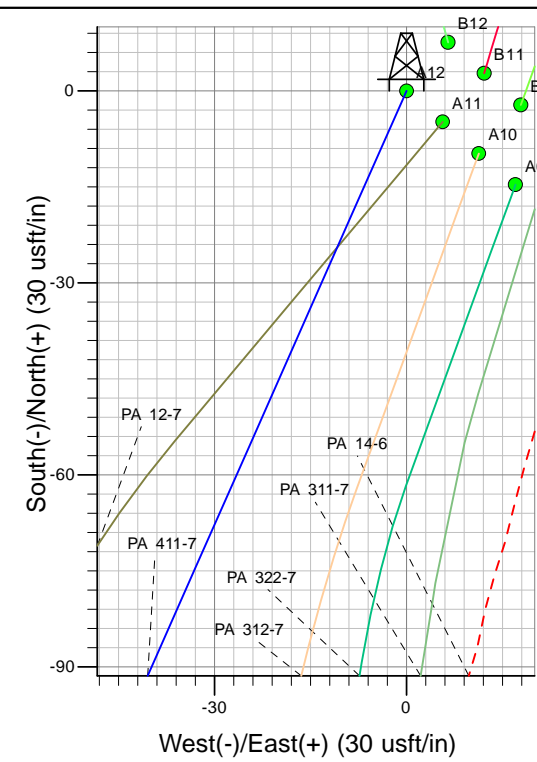
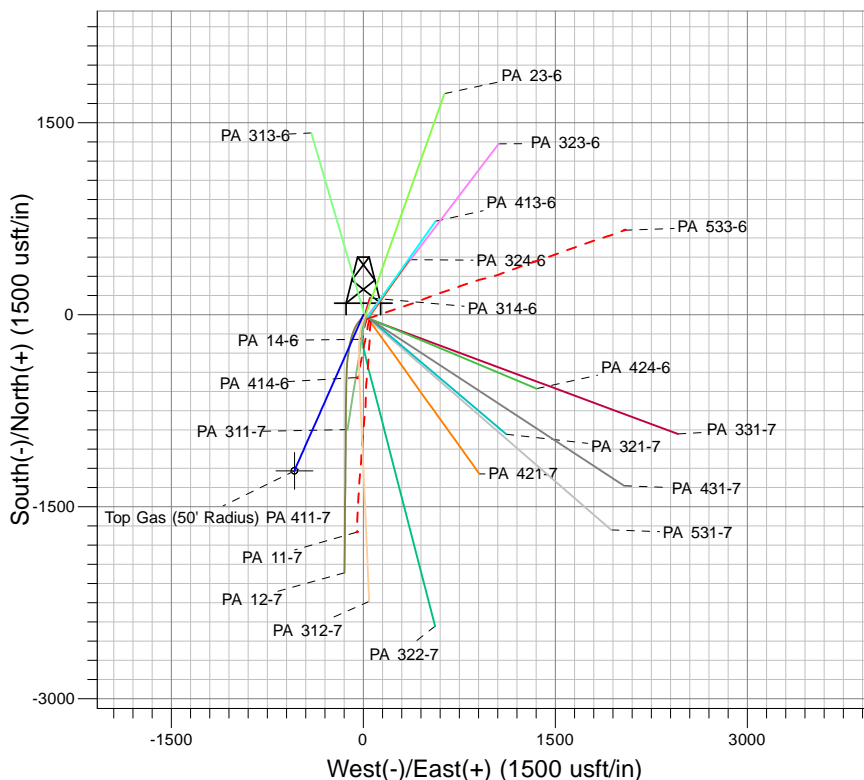
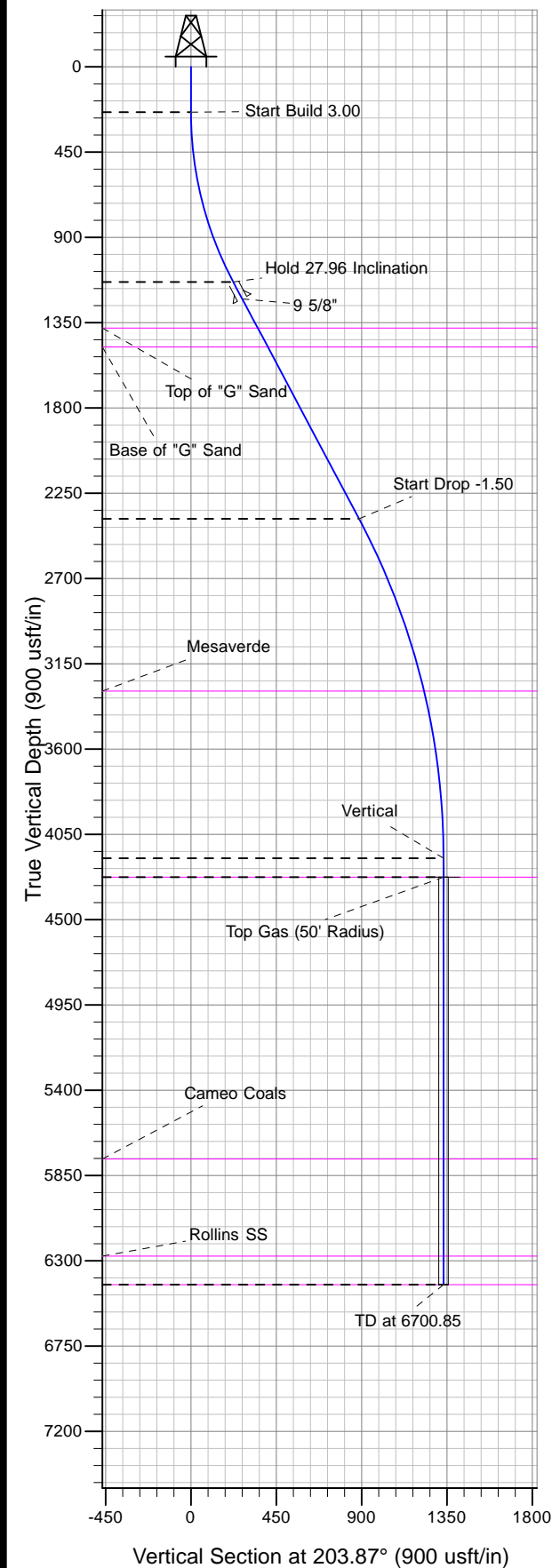
Well Name: PA 411-7

Surface Location: PA 14-6 Pad

North American Datum 1983 , US State Plane 1983 , Colorado Central Zone

Ground Elevation: 5153.00

KELLY BUSHING @ 5179.00usft (Nabors 574 (26' RKB))



Project: PA 06-07S-095W
Site: PA 14-6 Pad
Well: PA 411-7
Design #3 18Dec13 kjs

Azimuths to True North
Magnetic North: 10.00°
Magnetic Field
Strength: 51939.7snT
Dip Angle: 65.62°
Date: 5/7/2014
Model: IGRF2010

ANNOTATIONS

| TVD | MD | Inc | Azi | +N/-S | +E/-W | Vsect | Departure | Annotation |
|---------|---------|-------|--------|----------|---------|---------|-----------|------------------------|
| 240.00 | 240.00 | 0.00 | 0.00 | 0.00 | 0.00 | 0.00 | 0.00 | Start Build 3.00 |
| 1135.56 | 1172.13 | 27.96 | 203.87 | -203.91 | -90.25 | 222.99 | 222.99 | Hold 27.96 Inclination |
| 2384.88 | 2586.59 | 27.96 | 203.87 | -810.42 | -358.69 | 886.25 | 886.25 | Start Drop -1.50 |
| 4176.00 | 4450.85 | 0.00 | 0.00 | -1218.24 | -539.19 | 1332.23 | 1332.23 | Vertical |
| 4276.00 | 4550.85 | 0.00 | 0.00 | -1218.24 | -539.19 | 1332.23 | 1332.23 | Top Gas |
| 6426.00 | 6700.85 | 0.00 | 0.00 | -1218.24 | -539.19 | 1332.23 | 1332.23 | TD at 6700.85 |