
WPX ENERGY ROCKY MOUNTAIN LLC-EBUS

**RU 322-5
Rulison
Garfield County , Colorado**

Cement Surface Casing
24-Aug-2013

Post Job Report

The Road to Excellence Starts with Safety

Sold To #: 300721	Ship To #: 3096061	Quote #:	Sales Order #: 900682424
Customer: WPX ENERGY ROCKY MOUNTAIN LLC-EBUS		Customer Rep: Vallad, Gary	
Well Name: RU		Well #: 322-5	API/UWI #:
Field: Rulison	City (SAP): RIFLE	County/Parish: Garfield	State: Colorado
Contractor: NABORS		Rig/Platform Name/Num: 576	
Job Purpose: Cement Surface Casing			
Well Type: Development Well		Job Type: Cement Surface Casing	
Sales Person: MAYO, MARK		Srvc Supervisor: PONDER, THOMAS	MBU ID Emp #: 427112

Job Personnel

HES Emp Name	Exp Hrs	Emp #	HES Emp Name	Exp Hrs	Emp #	HES Emp Name	Exp Hrs	Emp #
LINN, PAUL Andrew	11	479143	PARKER, BRANDON	11	503646	PONDER, THOMAS Lynn	11	427112

Equipment

HES Unit #	Distance-1 way	HES Unit #	Distance-1 way	HES Unit #	Distance-1 way	HES Unit #	Distance-1 way
10616651C	60 mile	10867094	60 mile	11360871	60 mile	11583931	60 mile
11808827	60 mile						

Job Hours

Date	On Location Hours	Operating Hours	Date	On Location Hours	Operating Hours	Date	On Location Hours	Operating Hours
08/23/2013	8	.5	08/24/2013	3	1.5			
TOTAL			<i>Total is the sum of each column separately</i>					

Job

Job Times

Formation Name	Top	Bottom	Called Out	Date	Time	Time Zone
Formation Depth (MD)			On Location	23 - Aug - 2013	11:30	MST
Form Type		BHST	Job Started	23 - Aug - 2013	16:00	MST
Job depth MD	1120.3 ft	Job Depth TVD	Job Completed	24 - Aug - 2013	00:22	MST
Water Depth		Wk Ht Above Floor	Departed Loc	24 - Aug - 2013	01:24	MST
Perforation Depth (MD)	<i>From</i>	<i>To</i>		24 - Aug - 2013	03:00	MST

Well Data

Description	New / Used	Max pressure psig	Size in	ID in	Weight lbm/ft	Thread	Grade	Top MD ft	Bottom MD ft	Top TVD ft	Bottom TVD ft
OPEN HOLE				13.5				.	1126.		
SURFACE CASING	Unknown		9.625	9.001	32.3		H-40	.	1120.3		

Tools and Accessories

Type	Size	Qty	Make	Depth	Type	Size	Qty	Make	Depth	Type	Size	Qty	Make
Guide Shoe	9 5/8	1	WTF	1120.28	Packer					Top Plug	9 5/8	1	HES
Float Shoe					Bridge Plug					Bottom Plug			
Float Collar	9 5/8	1	WTF	1076.63	Retainer					SSR plug set			
Insert Float										Plug Container	9 5/8	1	HES
Stage Tool										Centralizers			

Miscellaneous Materials

Gelling Agt	Conc	Surfactant	Conc	Acid Type	Qty	Conc	%
Treatment Fld	Conc	Inhibitor	Conc	Sand Type	Size	Qty	Qty

Fluid Data

Stage/Plug #: 1

Fluid #	Stage Type	Fluid Name	Qty	Qty uom	Mixing Density lbm/gal	Yield ft3/sk	Mix Fluid Gal/sk	Rate bbl/min	Total Mix Fluid Gal/sk

Stage/Plug #: 1

Fluid #	Stage Type	Fluid Name	Qty	Qty uom	Mixing Density lbm/gal	Yield ft3/sk	Mix Fluid Gal/sk	Rate bbl/min	Total Mix Fluid Gal/sk

Stage/Plug #: 1									
1	Fresh Water Spacer		20.00	bbl	8.34	.0	.0	4.0	
2	VariCem GJ1 Lead Cement	VARICEM (TM) CEMENT (452009)	160.0	sacks	12.3	2.38	13.75	8.0	13.75
	13.75 Gal	FRESH WATER							
3	VariCem GJ1 Tail Cement	VARICEM (TM) CEMENT (452009)	160.0	sacks	12.8	2.11	11.75	8.0	11.75
	11.75 Gal	FRESH WATER							
4	Fresh Water Displacement		85.00	bbl	8.34	.0	.0	10.0	
Calculated Values		Pressures		Volumes					
Displacement	84.7	Shut In: Instant		Lost Returns		Cement Slurry	127.9	Pad	
Top Of Cement	SURFACE	5 Min		Cement Returns	35	Actual Displacement	84.7	Treatment	
Frac Gradient		15 Min		Spacers	20	Load and Breakdown		Total Job	232.6
Rates									
Circulating	RIG	Mixing	8	Displacement	9	Avg. Job	8		
Cement Left In Pipe	Amount	43.7 ft	Reason	Shoe Joint					
Frac Ring # 1 @	ID	Frac ring # 2 @	ID	Frac Ring # 3 @	ID	Frac Ring # 4 @	ID		
The Information Stated Herein Is Correct				Customer Representative Signature					

The Road to Excellence Starts with Safety

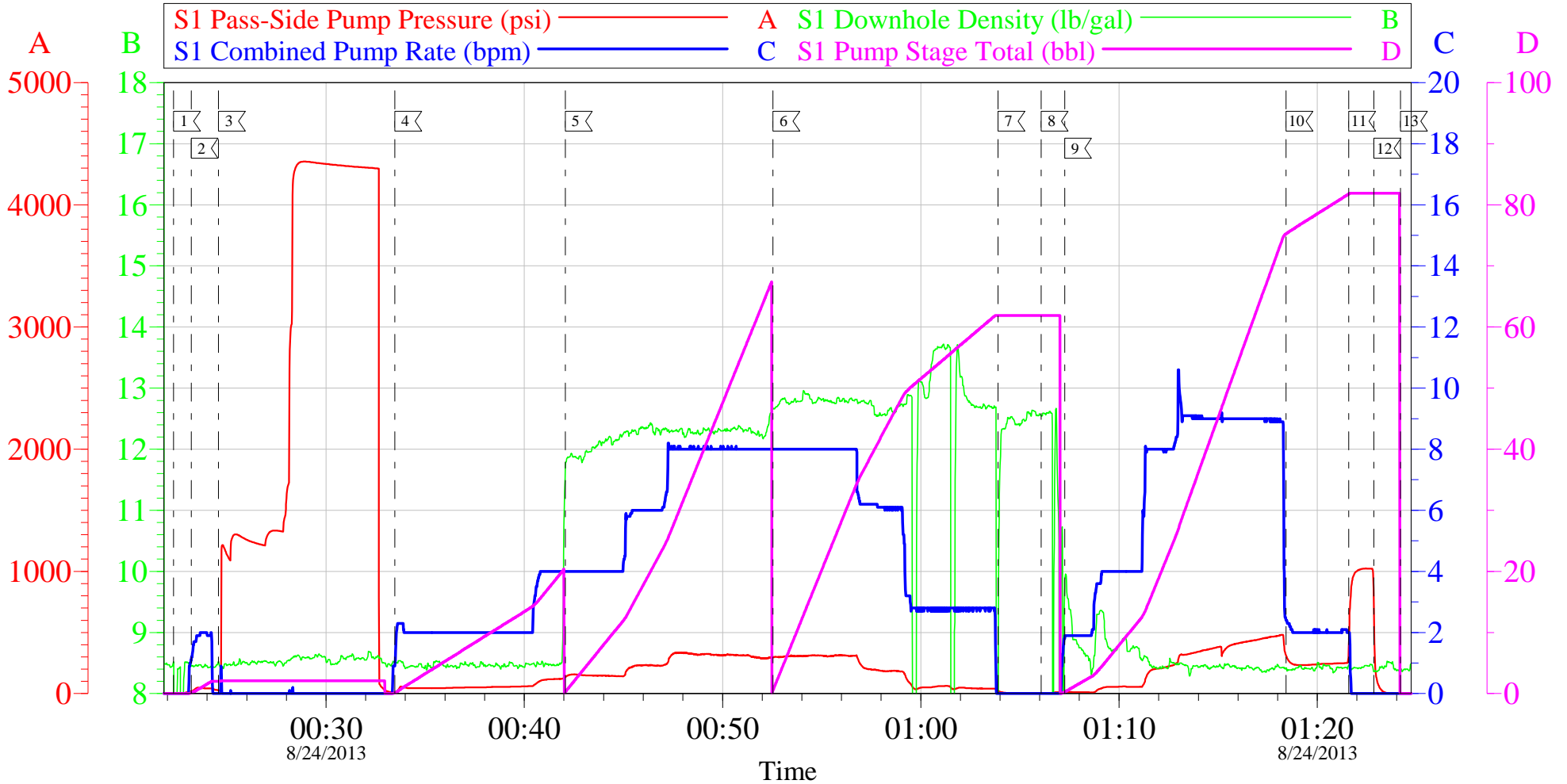
Sold To #: 300721	Ship To #: 3096061	Quote #:	Sales Order #: 900682424
Customer: WPX ENERGY ROCKY MOUNTAIN LLC-EBUS		Customer Rep: Vallad, Gary	
Well Name: RU		Well #: 322-5	API/UWI #:
Field: Rulison	City (SAP): RIFLE	County/Parish: Garfield	State: Colorado
Legal Description:			
Lat:		Long:	
Contractor: NABORS		Rig/Platform Name/Num: 576	
Job Purpose: Cement Surface Casing			Ticket Amount:
Well Type: Development Well		Job Type: Cement Surface Casing	
Sales Person: MAYO, MARK		Srvc Supervisor: PONDER, THOMAS	MBU ID Emp #: 427112

Activity Description	Date/Time	Cht #	Rate bbl/min	Volume bbl		Pressure psig		Comments
				Stage	Total	Tubing	Casing	
Call Out	08/23/2013 11:30							
Crew Leave Yard	08/23/2013 13:30							ALL HES PRESENT FOR PRE-CONVOY SAFETY HUDDLE
Arrive At Loc	08/23/2013 16:00							RIG WAS WAITING ON CASING CREW TO ARRIVE, INTERSTATE WAS CLOSED FROM DEBEQUE TO PARACHUTE CASERS ARRIVED ON LOCATION @ 1930
Assessment Of Location Safety Meeting	08/23/2013 23:30							TD- 1126', TP- 1120.28', SJ- 43.65', MUD- 9.8 PPG, HOLE- 13 1/2", SURFACE CASING- 9 5/8" 32.3# H-40
Rig-Up Equipment	08/23/2013 23:45							1-550 PICKUP, 1-ELITE PUMP, 1-660 CUFT BULK TRUCK
Safety Meeting	08/24/2013 00:00							ALL HES PRESENT, RIG CREW PRESENT, RIG STARTED CIRCULATING ON BOTTOM @ 2330
Start Job	08/24/2013 00:22		2	2			48.0	FILL LINES
Test Lines	08/24/2013 00:24		0.1	0.1			4354.0	GOOD PRESSURE TEST
Pump Spacer 1	08/24/2013 00:33		4	20			135.0	FRESH WATER
Pump Lead Cement	08/24/2013 00:42		8	67.8			338.0	160 SKS 12.3 PPG 2.38 FT3/SK 13.75 GAL/SK

Activity Description	Date/Time	Cht #	Rate bbl/min	Volume bbl		Pressure psig		Comments
				Stage	Total	Tubing	Casing	
Pump Tail Cement	08/24/2013 00:52		8	60.1			317.0	160 SKS 12.8 PPG 2.11 FT3/SK 11.75 GAL/SK, STOPPED GETTING WATER AT THE END OF TAIL CEMENT, DENSITY GOT HEAVY BEFORE WE GOT PRIME AGAIN
Shutdown	08/24/2013 01:03							
Drop Plug	08/24/2013 01:06							PLUG DROP VERIFIED VIA TATTLE TELL BY CUSTOMER REP
Pump Displacement	08/24/2013 01:07		10	74.7			482.0	FRESH WATER, WASHED UP MIXING TUB ON TOP OF PLUG WITH FIRST 10 BBL OF DISPLACEMENT
Slow Rate	08/24/2013 01:18		2	10	84.7		233.0	GOOD CIRCULATION THROUGH OUT THE JOB, 35 BBL CEMENT CIRCULATED TO SURFACE
Bump Plug	08/24/2013 01:21				84.7		1023. 0	PLUG BUMPED
Check Floats	08/24/2013 01:22							FLOATS HELD, 1/2 BBL BACK TO THE DISPLACEMENT TANKS
End Job	08/24/2013 01:24							THANK YOU FOR CHOOSING HALLIBURTON, THOMAS PONDER AND CREW

WPX RU 322-5

9.625 IN SURFACE

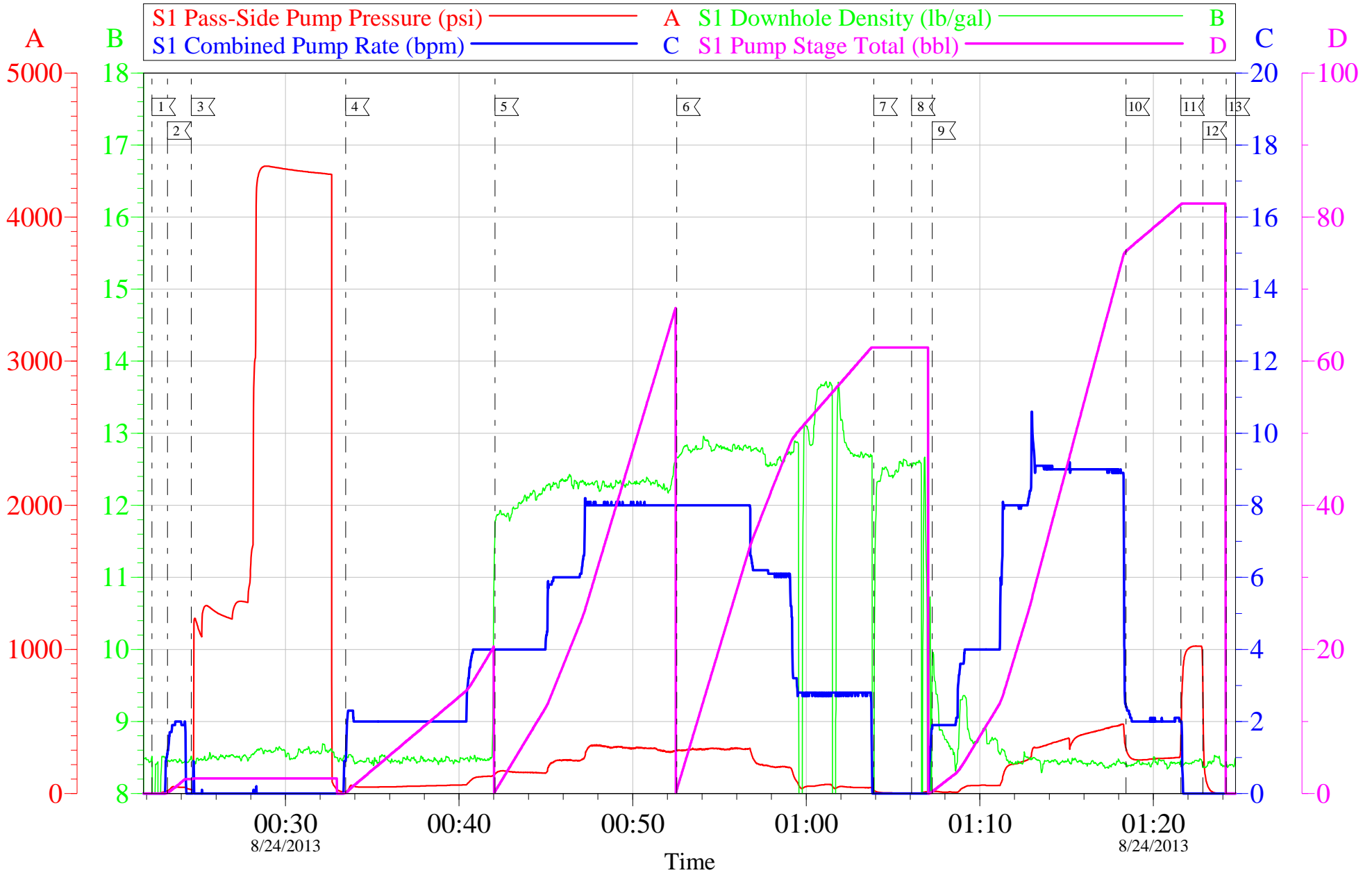


Local Event Log			
Maximum	SPPP	Maximum	SPPP
1 START JOB	00:22:18 18.46	2 FILL LINES	00:23:12 48.00
3 TEST LINES	00:24:34 4354	4 PUMP H2O SPACER	00:33:28 135.0
5 PUMP LEAD CEMENT	00:42:04 338.0	6 PUMP TAIL CEMENT	00:52:33 317.0
7 SHUTDOWN	01:03:54 23.00	8 DROP TOP PLUG	01:06:05 12.00
9 PUMP H2O DISPLACEMENT	01:07:15 482.0	10 SLOW RATE	01:18:26 416.8
11 BUMP PLUG	01:21:35 1024	12 CHECK FLOATS	01:22:52 720.0
13 END JOB	01:24:12 -2.000		

Customer: WPX	Job Date: 24-Aug-2013	Sales Order #: 900682424
Well Description: RU 322-5	Job Type: SURFACE	ADC Used: YES
Company Rep: RICK OAKS	Cement Supervisor: THOMAS PONDER	Elite #/Operator: ELITE #4 / ANDREW LINN

WPX RU 322-5

9.625 IN SURFACE



Customer: WPX	Job Date: 24-Aug-2013	Sales Order #: 900682424
Well Description: RU 322-5	Job Type: SURFACE	ADC Used: YES
Company Rep: RICK OAKS	Cement Supervisor: THOMAS PONDER	Elite #/Operator: ELITE #4 / ANDREW LINN

Sales Order #: 900682424	Line Item: 10	Survey Conducted Date: 8/24/2013
Customer: WPX ENERGY ROCKY MOUNTAIN LLC-EBUS		Job Type (BOM): CMT SURFACE CASING BOM
Customer Representative: RICK OAKS		API / UWI: (leave blank if unknown) AFEYCUI3GLKTATZSAAA
Well Name: RU		Well Number: 322-5
Well Type: Development Well	Well Country: United States of America	
H2S Present:	Well State: Colorado	Well County: Garfield

Dear Customer,

We hope that you were satisfied with the service quality of this job performed by Halliburton. It is the aim of our management and service personnel to deliver equipment and service of a standard unmatched in the service sector of the energy industry.

Please take the time to let us know if our performance met with your satisfaction. Please be as critical as possible to ensure we constantly improve our service. Your comments are of great value to us and are intended for the exclusive use of Halliburton.

CUSTOMER SATISFACTION SURVEY

CATEGORY	CUSTOMER SATISFACTION RESPONSE	
Survey Conducted Date	The date the survey was conducted	8/24/2013
Survey Interviewer	The survey interviewer is the person who initiated the survey.	THOMAS PONDER (HX41187)
Customer Participation	Did the customer participate in this survey? (Y/N)	Yes
Customer Representative	Enter the Customer representative name	RICK OAKS
HSE	Was our HSE performance satisfactory? Circle Y or N	Yes
Equipment	Were you satisfied with our Equipment? Circle Y or N	Yes
Personnel	Were you satisfied with our people? Circle Y or N	Yes
Customer Comment	Customer's Comment	

CUSTOMER SIGNATURE

Sales Order #: 900682424	Line Item: 10	Survey Conducted Date: 8/24/2013
Customer: WPX ENERGY ROCKY MOUNTAIN LLC-EBUS		Job Type (BOM): CMT SURFACE CASING BOM
Customer Representative: RICK OAKS		API / UWI: (leave blank if unknown) AFEYCU13GLKTATZSAAA
Well Name: RU		Well Number: 322-5
Well Type: Development Well	Well Country: United States of America	
H2S Present:	Well State: Colorado	Well County: Garfield

KEY PERFORMANCE INDICATORS

General	
Survey Conducted Date	8/24/2013
The date the survey was conducted	

Cementing KPI Survey	
Type of Job	0
Select the type of job. (Cementing or Non-Cementing)	
Select the Maximum Deviation range for this Job	Deviated
What is the highest deviation for the job you just completed? This may not be the maximum well deviation.	
Total Operating Time (hours)	2
Total Operating Hours Including Rig-up, Pumping, Rig-down. Enter in decimal format.	
HSE Incident, Accident, Injury	No
HSE Incident, Accident, Injury. This should be recordable incidents only.	
Was the job purpose achieved?	Yes
Was the job delivered correctly as per customer agreed design?	
Operating Hours (Pumping Hours)	1
Total number of hours pumping fluid on this job. Enter in decimal format.	
Customer Non-Productive Rig Time (hrs)	0
Lost time due to Halliburton in the start, execution, or completion of an ordered service or product, or delays in a follow-on service. Enter in decimal format. 0 if none.	
Type of Rig Classification Job Was Performed	Drilling Rig (Portable)
Type Of Rig (classification) Job Was Performed On	
Number Of JSAs Performed	6
Number Of Jsas Performed	
Number of Unplanned Shutdowns	0
Unplanned shutdown is when injection stops for any period of time.	
Was this a Primary Cement Job (Yes / No)	Yes

Sales Order #: 900682424	Line Item: 10	Survey Conducted Date: 8/24/2013
Customer: WPX ENERGY ROCKY MOUNTAIN LLC-EBUS		Job Type (BOM): CMT SURFACE CASING BOM
Customer Representative: RICK OAKS		API / UWI: (leave blank if unknown) AFEYCU13GLKTATZSAAA
Well Name: RU		Well Number: 322-5
Well Type: Development Well	Well Country: United States of America	
H2S Present:	Well State: Colorado	Well County: Garfield

Primary Cement Job= Casing job, Liner job, or Tie-back job.	
Did We Run Wiper Plugs? Did We Run Top And Bottom Casing Wiper Plugs?	Top
Mixing Density of Job Stayed in Designed Density Range (0-100%) Density Range defined as +/- .20 ppg. Calculation: Total BBLs cement mixed at designed density divided by total BBLs of cement multiplied by 100	97
Was Automated Density Control Used? Was Automated Density Control (ADC) Used ?	Yes
Pump Rate (percent) of Job Stayed At Designed Pump Rate Pump Rate range defined as +/- 1bbl/min. Calculation: Total BBLs of fluid pumped at the designed rate divided by Total BBLs of fluid pumped, multiplied by 100	99
Nbr of Remedial Sqz Jobs Rqd - Competition Number Of Remedial Squeeze Jobs Required After Primary Job Performed By Competition	0
Nbr of Remedial Plug Jobs Rqd - HES Number Of Remedial Plug Jobs Needed After Primary Plug Pumped By HES	0
Nbr of Remedial Sqz Jobs Rqd - HES Number Of Remedial Squeeze Jobs Required After Primary Job Performed By HES	0