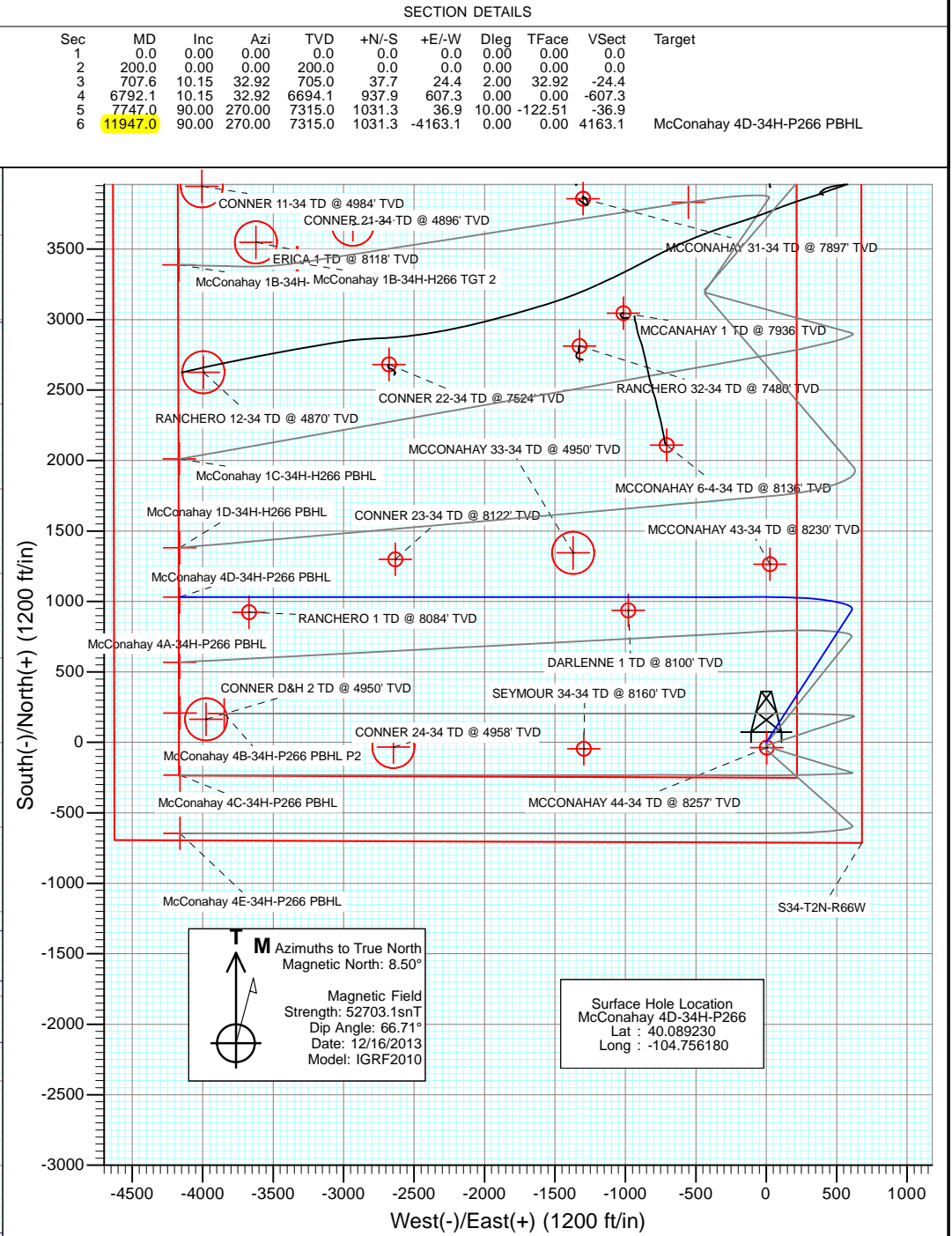
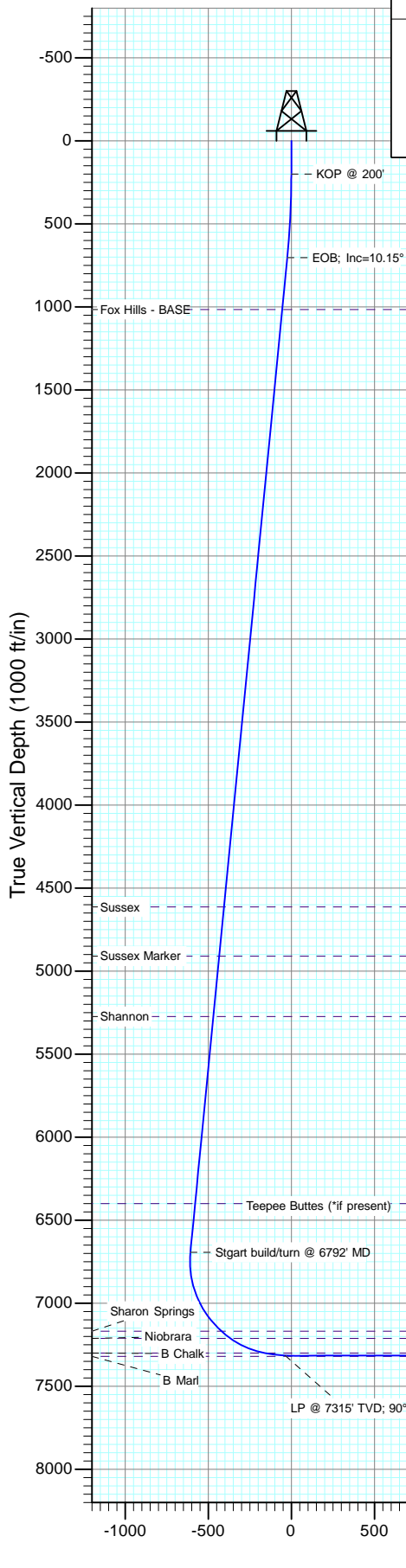




Project: DJ Wattenberg  
Site: S34-T2N-R66W (McConahay)  
Well: McConahay 4D-34H-P266  
Design: Plan #1



DESIGN TARGET DETAILS					
Name	+N/-S	+E/-W	Northing	Easting	Latitude
McConahay 4D-34H-P266 PBHL	1031.3	-4163.1	1277222.83	3203943.60	40.092060

Plan #1  
McConahay 4D-34H-P266  
13xxx; LR  
WELL @ 5091.0ft (Original Well Elev)  
Ground Elevation @ 5078.0  
North American Datum 1983  
Well McConahay 4D-34H-P266, True North

## Planning Report

<b>Database:</b>	USA EDM 5000 Multi Users DB	<b>Local Co-ordinate Reference:</b>	Well McConahay 4D-34H-P266
<b>Company:</b>	EnCana Oil & Gas (USA) Inc	<b>TVD Reference:</b>	WELL @ 5091.0ft (Original Well Elev)
<b>Project:</b>	DJ Wattenberg	<b>MD Reference:</b>	WELL @ 5091.0ft (Original Well Elev)
<b>Site:</b>	S34-T2N-R66W (McConahay)	<b>North Reference:</b>	True
<b>Well:</b>	McConahay 4D-34H-P266	<b>Survey Calculation Method:</b>	Minimum Curvature
<b>Wellbore:</b>	Hz		
<b>Design:</b>	Plan #1		

<b>Project</b>	DJ Wattenberg		
<b>Map System:</b>	US State Plane 1983	<b>System Datum:</b>	Mean Sea Level
<b>Geo Datum:</b>	North American Datum 1983		
<b>Map Zone:</b>	Colorado Northern Zone		

Site		S34-T2N-R66W (McConahay)			
Site Position:		Northing:	1,280,109.37 ft	Latitude:	40.099880
From:	Lat/Long	Easting:	3,208,491.04 ft	Longitude:	-104.754720
Position Uncertainty:	0.0 ft	Slot Radius:	13.200 in	Grid Convergence:	0.48 °

Well	McConahay 4D-34H-P266					
Well Position	+N/-S	0.0 ft	Northing:	1,276,226.52 ft	Latitude:	40.089230
	+E/-W	0.0 ft	Easting:	3,208,115.17 ft	Longitude:	-104.756180
Position Uncertainty		0.0 ft	Wellhead Elevation:	ft	Ground Level:	5,078.0 ft

<b>Wellbore</b>	Hz				
<b>Magnetics</b>	<b>Model Name</b>	<b>Sample Date</b>	<b>Declination (°)</b>	<b>Dip Angle (°)</b>	<b>Field Strength (nT)</b>
	IGRF2010	12/16/2013	8.50	66.71	52,703

<b>Design</b>	Plan #1			
<b>Audit Notes:</b>				
<b>Version:</b>	<b>Phase:</b>	PLAN	<b>Tie On Depth:</b>	0.0
<b>Vertical Section:</b>	<b>Depth From (TVD) (ft)</b>	<b>+N/-S (ft)</b>	<b>+E/-W (ft)</b>	<b>Direction (°)</b>
	0.0	0.0	0.0	270.00

<b>Plan Sections</b>										
Measured Depth (ft)	Inclination (°)	Azimuth (°)	Vertical Depth (ft)	+N/-S (ft)	+E/-W (ft)	Dogleg Rate (°/100ft)	Build Rate (°/100ft)	Turn Rate (°/100ft)	TFO (°)	Target
0.0	0.00	0.00	0.0	0.0	0.0	0.00	0.00	0.00	0.00	
200.0	0.00	0.00	200.0	0.0	0.0	0.00	0.00	0.00	0.00	
707.6	10.15	32.92	705.0	37.7	24.4	2.00	2.00	0.00	32.92	
6,792.1	10.15	32.92	6,694.1	937.9	607.3	0.00	0.00	0.00	0.00	
7,747.0	90.00	270.00	7,315.0	1,031.3	36.9	10.00	8.36	-12.87	-122.51	
11,947.0	90.00	270.00	7,315.0	1,031.3	-4,163.1	0.00	0.00	0.00	0.00	McConahay 4D-34H-I

# Planning Report

<b>Database:</b>	USA EDM 5000 Multi Users DB	<b>Local Co-ordinate Reference:</b>	Well McConahay 4D-34H-P266
<b>Company:</b>	EnCana Oil & Gas (USA) Inc	<b>TVD Reference:</b>	WELL @ 5091.0ft (Original Well Elev)
<b>Project:</b>	DJ Wattenberg	<b>MD Reference:</b>	WELL @ 5091.0ft (Original Well Elev)
<b>Site:</b>	S34-T2N-R66W (McConahay)	<b>North Reference:</b>	True
<b>Well:</b>	McConahay 4D-34H-P266	<b>Survey Calculation Method:</b>	Minimum Curvature
<b>Wellbore:</b>	Hz		
<b>Design:</b>	Plan #1		

## Planned Survey

Measured Depth (ft)	Inclination (°)	Azimuth (°)	Vertical Depth (ft)	+N/-S (ft)	+E/-W (ft)	Vertical Section (ft)	Dogleg Rate (°/100ft)	Build Rate (°/100ft)	Comments / Formations
0.0	0.00	0.00	0.0	0.0	0.0	0.0	0.00	0.00	
100.0	0.00	0.00	100.0	0.0	0.0	0.0	0.00	0.00	
200.0	0.00	0.00	200.0	0.0	0.0	0.0	0.00	0.00	KOP @ 200'
300.0	2.00	32.92	300.0	1.5	0.9	-0.9	2.00	2.00	
400.0	4.00	32.92	399.8	5.9	3.8	-3.8	2.00	2.00	
500.0	6.00	32.92	499.5	13.2	8.5	-8.5	2.00	2.00	
600.0	8.00	32.92	598.7	23.4	15.2	-15.2	2.00	2.00	
700.0	10.00	32.92	697.5	36.5	23.7	-23.7	2.00	2.00	
707.6	10.15	32.92	705.0	37.7	24.4	-24.4	2.00	2.00	EOB; Inc=10.15°
800.0	10.15	32.92	795.9	51.3	33.2	-33.2	0.00	0.00	
900.0	10.15	32.92	894.3	66.1	42.8	-42.8	0.00	0.00	
1,000.0	10.15	32.92	992.8	80.9	52.4	-52.4	0.00	0.00	
1,023.6	10.15	32.92	1,016.0	84.4	54.6	-54.6	0.00	0.00	Fox Hills - BASE
1,100.0	10.15	32.92	1,091.2	95.7	62.0	-62.0	0.00	0.00	
1,200.0	10.15	32.92	1,189.6	110.5	71.5	-71.5	0.00	0.00	
1,300.0	10.15	32.92	1,288.1	125.3	81.1	-81.1	0.00	0.00	
1,400.0	10.15	32.92	1,386.5	140.1	90.7	-90.7	0.00	0.00	
1,500.0	10.15	32.92	1,484.9	154.9	100.3	-100.3	0.00	0.00	
1,600.0	10.15	32.92	1,583.4	169.7	109.9	-109.9	0.00	0.00	
1,700.0	10.15	32.92	1,681.8	184.5	119.4	-119.4	0.00	0.00	
1,800.0	10.15	32.92	1,780.2	199.3	129.0	-129.0	0.00	0.00	
1,900.0	10.15	32.92	1,878.7	214.1	138.6	-138.6	0.00	0.00	
2,000.0	10.15	32.92	1,977.1	228.9	148.2	-148.2	0.00	0.00	
2,100.0	10.15	32.92	2,075.5	243.7	157.8	-157.8	0.00	0.00	
2,200.0	10.15	32.92	2,174.0	258.5	167.3	-167.3	0.00	0.00	
2,300.0	10.15	32.92	2,272.4	273.3	176.9	-176.9	0.00	0.00	
2,400.0	10.15	32.92	2,370.8	288.1	186.5	-186.5	0.00	0.00	
2,500.0	10.15	32.92	2,469.3	302.9	196.1	-196.1	0.00	0.00	
2,600.0	10.15	32.92	2,567.7	317.7	205.7	-205.7	0.00	0.00	
2,700.0	10.15	32.92	2,666.2	332.5	215.2	-215.2	0.00	0.00	
2,800.0	10.15	32.92	2,764.6	347.3	224.8	-224.8	0.00	0.00	
2,900.0	10.15	32.92	2,863.0	362.0	234.4	-234.4	0.00	0.00	
3,000.0	10.15	32.92	2,961.5	376.8	244.0	-244.0	0.00	0.00	
3,100.0	10.15	32.92	3,059.9	391.6	253.6	-253.6	0.00	0.00	
3,200.0	10.15	32.92	3,158.3	406.4	263.1	-263.1	0.00	0.00	
3,300.0	10.15	32.92	3,256.8	421.2	272.7	-272.7	0.00	0.00	
3,400.0	10.15	32.92	3,355.2	436.0	282.3	-282.3	0.00	0.00	
3,500.0	10.15	32.92	3,453.6	450.8	291.9	-291.9	0.00	0.00	
3,600.0	10.15	32.92	3,552.1	465.6	301.5	-301.5	0.00	0.00	
3,700.0	10.15	32.92	3,650.5	480.4	311.0	-311.0	0.00	0.00	
3,800.0	10.15	32.92	3,748.9	495.2	320.6	-320.6	0.00	0.00	
3,900.0	10.15	32.92	3,847.4	510.0	330.2	-330.2	0.00	0.00	
4,000.0	10.15	32.92	3,945.8	524.8	339.8	-339.8	0.00	0.00	
4,100.0	10.15	32.92	4,044.2	539.6	349.4	-349.4	0.00	0.00	
4,200.0	10.15	32.92	4,142.7	554.4	358.9	-358.9	0.00	0.00	
4,300.0	10.15	32.92	4,241.1	569.2	368.5	-368.5	0.00	0.00	
4,400.0	10.15	32.92	4,339.5	584.0	378.1	-378.1	0.00	0.00	
4,500.0	10.15	32.92	4,438.0	598.8	387.7	-387.7	0.00	0.00	
4,600.0	10.15	32.92	4,536.4	613.6	397.3	-397.3	0.00	0.00	
4,678.8	10.15	32.92	4,614.0	625.3	404.8	-404.8	0.00	0.00	Sussex
4,700.0	10.15	32.92	4,634.8	628.4	406.8	-406.8	0.00	0.00	
4,800.0	10.15	32.92	4,733.3	643.2	416.4	-416.4	0.00	0.00	

# Planning Report

<b>Database:</b>	USA EDM 5000 Multi Users DB	<b>Local Co-ordinate Reference:</b>	Well McConahay 4D-34H-P266
<b>Company:</b>	EnCana Oil & Gas (USA) Inc	<b>TVD Reference:</b>	WELL @ 5091.0ft (Original Well Elev)
<b>Project:</b>	DJ Wattenberg	<b>MD Reference:</b>	WELL @ 5091.0ft (Original Well Elev)
<b>Site:</b>	S34-T2N-R66W (McConahay)	<b>North Reference:</b>	True
<b>Well:</b>	McConahay 4D-34H-P266	<b>Survey Calculation Method:</b>	Minimum Curvature
<b>Wellbore:</b>	Hz		
<b>Design:</b>	Plan #1		

Planned Survey									
Measured Depth (ft)	Inclination (°)	Azimuth (°)	Vertical Depth (ft)	+N/-S (ft)	+E/-W (ft)	Vertical Section (ft)	Dogleg Rate (°/100ft)	Build Rate (°/100ft)	Comments / Formations
4,900.0	10.15	32.92	4,831.7	658.0	426.0	-426.0	0.00	0.00	
4,979.5	10.15	32.92	4,910.0	669.7	433.6	-433.6	0.00	0.00	Sussex Marker
5,000.0	10.15	32.92	4,930.1	672.8	435.6	-435.6	0.00	0.00	
5,100.0	10.15	32.92	5,028.6	687.6	445.2	-445.2	0.00	0.00	
5,200.0	10.15	32.92	5,127.0	702.4	454.7	-454.7	0.00	0.00	
5,300.0	10.15	32.92	5,225.4	717.2	464.3	-464.3	0.00	0.00	
5,349.3	10.15	32.92	5,274.0	724.5	469.0	-469.0	0.00	0.00	Shannon
5,400.0	10.15	32.92	5,323.9	732.0	473.9	-473.9	0.00	0.00	
5,500.0	10.15	32.92	5,422.3	746.8	483.5	-483.5	0.00	0.00	
5,600.0	10.15	32.92	5,520.7	761.6	493.1	-493.1	0.00	0.00	
5,700.0	10.15	32.92	5,619.2	776.4	502.6	-502.6	0.00	0.00	
5,800.0	10.15	32.92	5,717.6	791.1	512.2	-512.2	0.00	0.00	
5,900.0	10.15	32.92	5,816.0	805.9	521.8	-521.8	0.00	0.00	
6,000.0	10.15	32.92	5,914.5	820.7	531.4	-531.4	0.00	0.00	
6,100.0	10.15	32.92	6,012.9	835.5	541.0	-541.0	0.00	0.00	
6,200.0	10.15	32.92	6,111.3	850.3	550.5	-550.5	0.00	0.00	
6,300.0	10.15	32.92	6,209.8	865.1	560.1	-560.1	0.00	0.00	
6,400.0	10.15	32.92	6,308.2	879.9	569.7	-569.7	0.00	0.00	
6,493.2	10.15	32.92	6,400.0	893.7	578.6	-578.6	0.00	0.00	Teepee Buttes (*if present)
6,500.0	10.15	32.92	6,406.7	894.7	579.3	-579.3	0.00	0.00	
6,600.0	10.15	32.92	6,505.1	909.5	588.9	-588.9	0.00	0.00	
6,700.0	10.15	32.92	6,603.5	924.3	598.4	-598.4	0.00	0.00	
6,792.1	10.15	32.92	6,694.1	937.9	607.3	-607.3	0.00	0.00	Stgart build/turn @ 6792' MD
6,800.0	9.75	28.96	6,702.0	939.1	608.0	-608.0	10.00	-5.09	
6,900.0	10.05	328.04	6,800.7	954.0	607.4	-607.4	10.00	0.30	
7,000.0	17.47	298.52	6,897.9	968.6	589.6	-589.6	10.00	7.43	
7,100.0	26.61	287.46	6,990.5	982.5	554.9	-554.9	10.00	9.14	
7,200.0	36.19	281.86	7,075.8	995.3	504.6	-504.6	10.00	9.57	
7,300.0	45.92	278.37	7,151.1	1,006.6	440.0	-440.0	10.00	9.74	
7,326.3	48.50	277.64	7,169.0	1,009.3	420.8	-420.8	10.00	9.79	Sharon Springs
7,396.1	55.35	275.96	7,212.0	1,015.8	366.3	-366.3	10.00	9.82	Niobrara
7,400.0	55.74	275.88	7,214.2	1,016.1	363.1	-363.1	10.00	9.84	
7,500.0	65.59	273.91	7,263.2	1,023.5	276.4	-276.4	10.00	9.85	
7,600.0	75.46	272.23	7,296.4	1,028.5	182.4	-182.4	10.00	9.87	
7,614.9	76.94	272.00	7,300.0	1,029.0	167.9	-167.9	10.00	9.88	B Chalk
7,700.0	85.35	270.70	7,313.1	1,031.0	83.9	-83.9	10.00	9.89	
7,747.0	90.00	270.00	7,315.0	1,031.3	36.9	-36.9	10.00	9.89	LP @ 7315' TVD; 90°
7,800.0	90.00	270.00	7,315.0	1,031.3	-16.0	16.0	0.00	0.00	
7,900.0	90.00	270.00	7,315.0	1,031.3	-116.0	116.0	0.00	0.00	
8,000.0	90.00	270.00	7,315.0	1,031.3	-216.0	216.0	0.00	0.00	
8,100.0	90.00	270.00	7,315.0	1,031.3	-316.0	316.0	0.00	0.00	
8,200.0	90.00	270.00	7,315.0	1,031.3	-416.0	416.0	0.00	0.00	
8,300.0	90.00	270.00	7,315.0	1,031.3	-516.0	516.0	0.00	0.00	
8,400.0	90.00	270.00	7,315.0	1,031.3	-616.0	616.0	0.00	0.00	
8,500.0	90.00	270.00	7,315.0	1,031.3	-716.0	716.0	0.00	0.00	
8,600.0	90.00	270.00	7,315.0	1,031.3	-816.0	816.0	0.00	0.00	
8,700.0	90.00	270.00	7,315.0	1,031.3	-916.0	916.0	0.00	0.00	
8,800.0	90.00	270.00	7,315.0	1,031.3	-1,016.0	1,016.0	0.00	0.00	
8,900.0	90.00	270.00	7,315.0	1,031.3	-1,116.0	1,116.0	0.00	0.00	
9,000.0	90.00	270.00	7,315.0	1,031.3	-1,216.0	1,216.0	0.00	0.00	
9,100.0	90.00	270.00	7,315.0	1,031.3	-1,316.0	1,316.0	0.00	0.00	
9,200.0	90.00	270.00	7,315.0	1,031.3	-1,416.0	1,416.0	0.00	0.00	

## Planning Report

<b>Database:</b>	USA EDM 5000 Multi Users DB	<b>Local Co-ordinate Reference:</b>	Well McConahay 4D-34H-P266
<b>Company:</b>	EnCana Oil & Gas (USA) Inc	<b>TVD Reference:</b>	WELL @ 5091.0ft (Original Well Elev)
<b>Project:</b>	DJ Wattenberg	<b>MD Reference:</b>	WELL @ 5091.0ft (Original Well Elev)
<b>Site:</b>	S34-T2N-R66W (McConahay)	<b>North Reference:</b>	True
<b>Well:</b>	McConahay 4D-34H-P266	<b>Survey Calculation Method:</b>	Minimum Curvature
<b>Wellbore:</b>	Hz		
<b>Design:</b>	Plan #1		

### Planned Survey

Measured Depth (ft)	Inclination (°)	Azimuth (°)	Vertical Depth (ft)	+N/-S (ft)	+E/-W (ft)	Vertical Section (ft)	Dogleg Rate (°/100ft)	Build Rate (°/100ft)	Comments / Formations
9,300.0	90.00	270.00	7,315.0	1,031.3	-1,516.0	1,516.0	0.00	0.00	
9,400.0	90.00	270.00	7,315.0	1,031.3	-1,616.0	1,616.0	0.00	0.00	
9,500.0	90.00	270.00	7,315.0	1,031.3	-1,716.0	1,716.0	0.00	0.00	
9,600.0	90.00	270.00	7,315.0	1,031.3	-1,816.0	1,816.0	0.00	0.00	
9,700.0	90.00	270.00	7,315.0	1,031.3	-1,916.0	1,916.0	0.00	0.00	
9,800.0	90.00	270.00	7,315.0	1,031.3	-2,016.0	2,016.0	0.00	0.00	
9,900.0	90.00	270.00	7,315.0	1,031.3	-2,116.0	2,116.0	0.00	0.00	
10,000.0	90.00	270.00	7,315.0	1,031.3	-2,216.0	2,216.0	0.00	0.00	
10,100.0	90.00	270.00	7,315.0	1,031.3	-2,316.0	2,316.0	0.00	0.00	
10,200.0	90.00	270.00	7,315.0	1,031.3	-2,416.0	2,416.0	0.00	0.00	
10,300.0	90.00	270.00	7,315.0	1,031.3	-2,516.0	2,516.0	0.00	0.00	
10,400.0	90.00	270.00	7,315.0	1,031.3	-2,616.0	2,616.0	0.00	0.00	
10,500.0	90.00	270.00	7,315.0	1,031.3	-2,716.0	2,716.0	0.00	0.00	
10,600.0	90.00	270.00	7,315.0	1,031.3	-2,816.0	2,816.0	0.00	0.00	
10,700.0	90.00	270.00	7,315.0	1,031.3	-2,916.0	2,916.0	0.00	0.00	
10,800.0	90.00	270.00	7,315.0	1,031.3	-3,016.0	3,016.0	0.00	0.00	
10,900.0	90.00	270.00	7,315.0	1,031.3	-3,116.0	3,116.0	0.00	0.00	
11,000.0	90.00	270.00	7,315.0	1,031.3	-3,216.0	3,216.0	0.00	0.00	
11,100.0	90.00	270.00	7,315.0	1,031.3	-3,316.0	3,316.0	0.00	0.00	
11,200.0	90.00	270.00	7,315.0	1,031.3	-3,416.0	3,416.0	0.00	0.00	
11,300.0	90.00	270.00	7,315.0	1,031.3	-3,516.0	3,516.0	0.00	0.00	
11,400.0	90.00	270.00	7,315.0	1,031.3	-3,616.0	3,616.0	0.00	0.00	
11,500.0	90.00	270.00	7,315.0	1,031.3	-3,716.0	3,716.0	0.00	0.00	
11,600.0	90.00	270.00	7,315.0	1,031.3	-3,816.0	3,816.0	0.00	0.00	
11,700.0	90.00	270.00	7,315.0	1,031.3	-3,916.0	3,916.0	0.00	0.00	
11,800.0	90.00	270.00	7,315.0	1,031.3	-4,016.0	4,016.0	0.00	0.00	
11,900.0	90.00	270.00	7,315.0	1,031.3	-4,116.0	4,116.0	0.00	0.00	
11,947.0	90.00	270.00	7,315.0	1,031.3	-4,163.1	4,163.1	0.00	0.00	TD at 11947.0 - McConahay 4D-34H-P266 PBI-

### Targets

Target Name	Dip Angle (°)	Dip Dir. (°)	TVD (ft)	+N/-S (ft)	+E/-W (ft)	Northing (ft)	Easting (ft)	Latitude	Longitude
- hit/miss target									
- Shape									
McConahay 4D-34H-P2I	0.00	0.00	7,315.0	1,031.3	-4,163.1	1,277,222.83	3,203,943.60	40.092060	-104.771060
- plan hits target center									
- Point									

## Planning Report

<b>Database:</b>	USA EDM 5000 Multi Users DB	<b>Local Co-ordinate Reference:</b>	Well McConahay 4D-34H-P266
<b>Company:</b>	EnCana Oil & Gas (USA) Inc	<b>TVD Reference:</b>	WELL @ 5091.0ft (Original Well Elev)
<b>Project:</b>	DJ Wattenberg	<b>MD Reference:</b>	WELL @ 5091.0ft (Original Well Elev)
<b>Site:</b>	S34-T2N-R66W (McConahay)	<b>North Reference:</b>	True
<b>Well:</b>	McConahay 4D-34H-P266	<b>Survey Calculation Method:</b>	Minimum Curvature
<b>Wellbore:</b>	Hz		
<b>Design:</b>	Plan #1		

Formations						
Measured Depth (ft)	Vertical Depth (ft)	Name	Lithology	Dip (°)	Dip Direction (°)	
1,023.6	1,016.0	Fox Hills - BASE				
4,678.8	4,614.0	Sussex				
4,979.5	4,910.0	Sussex Marker				
5,349.3	5,274.0	Shannon				
6,493.2	6,400.0	Teepee Buttes (*if present)				
7,326.3	7,169.0	Sharon Springs				
7,396.1	7,212.0	Niobrara				
7,614.9	7,300.0	B Chalk				

Plan Annotations					
Measured Depth (ft)	Vertical Depth (ft)	Local Coordinates			
		+N/-S (ft)	+E/-W (ft)	Comment	
200.0	200.0	0.0	0.0	KOP @ 200'	
707.6	705.0	37.7	24.4	EOB; Inc=10.15°	
6,792.1	6,694.1	937.9	607.3	Stgart build/turn @ 6792' MD	
7,747.0	7,315.0	1,031.3	36.9	LP @ 7315' TVD; 90°	
11,947.0	7,315.0	1,031.3	-4,163.1	TD at 11947.0	

# **EnCana Oil & Gas (USA) Inc**

**DJ Wattenberg**

**S34-T2N-R66W (McConahay)**

**McConahay 4D-34H-P266**

**Hz**

**Plan #1**

## **Anticollision Report**

**16 December, 2013**

# Anticollision Report

<b>Company:</b>	EnCana Oil & Gas (USA) Inc	<b>Local Co-ordinate Reference:</b>	Well McConahay 4D-34H-P266
<b>Project:</b>	DJ Wattenberg	<b>TVD Reference:</b>	WELL @ 5091.0ft (Original Well Elev)
<b>Reference Site:</b>	S34-T2N-R66W (McConahay)	<b>MD Reference:</b>	WELL @ 5091.0ft (Original Well Elev)
<b>Site Error:</b>	0.0ft	<b>North Reference:</b>	True
<b>Reference Well:</b>	McConahay 4D-34H-P266	<b>Survey Calculation Method:</b>	Minimum Curvature
<b>Well Error:</b>	0.0ft	<b>Output errors are at</b>	2.00 sigma
<b>Reference Wellbore</b>	Hz	<b>Database:</b>	USA EDM 5000 Multi Users DB
<b>Reference Design:</b>	Plan #1	<b>Offset TVD Reference:</b>	Offset Datum

Reference	Plan #1		
Filter type:	NO GLOBAL FILTER: Using user defined selection & filtering criteria		
Interpolation Method:	MD Interval 100.0ft	Error Model:	Systematic Ellipse
Depth Range:	Unlimited	Scan Method:	Closest Approach 3D
Results Limited by:	Maximum center-center distance of 500.0ft	Error Surface:	Elliptical Conic
Warning Levels Evaluated at:	2.00 Sigma		

Survey Tool Program		Date	12/16/2013		
From (ft)	To (ft)	Survey (Wellbore)	Tool Name	Description	
0.0	11,947.0	Plan #1 (Hz)	Geolink MWD	Geolink MWD	

Summary						
Site Name	Reference Measured Depth (ft)	Offset Measured Depth (ft)	Distance Between Centres (ft)	Distance Between Ellipses (ft)	Separation Factor	Warning
Offset Well - Wellbore - Design						
S34-T2N-R66W (McConahay)						
CONNER 11-34 (EXISTING) - MACEY & MERSHON WE						Out of range
CONNER 21-34 (EXISTING) - FOUNDATION WELL - NO						Out of range
CONNER 22-34 (EXISTING) - ENCANA WELL - GYRO						Out of range
CONNER 23-34 (EXISTING) - ENCANA WELL - NO SUR	10,416.6	7,245.0	267.5	181.6	3.112	CC, ES, SF
CONNER 24-34 (EXISTING) - FOUNDATION WELL - NO						Out of range
CONNER D&H 2 (EXISTING) - MARINER WELL - NO S						Out of range
DARLENNE 1 (EXISTING) - ENCANA WELL - NO SURV	8,763.5	7,275.0	94.7	47.9	2.023	CC, ES, SF
ERICA 1 (EXISTING) - GREAT WESTERN WELL - NO S						Out of range
MCCONAHAY 1 (EXISTING) - ENCANA WELL - GYRO						Out of range
McConahay 1A-34H - Hz - Hz						Out of range
McConahay 1B-34H-H266 - Hz - Plan #4						Out of range
McConahay 1C-34H-H266 - Hz - Plan #1						Out of range
McConahay 1D-34H-H266 - Hz - Plan #1	11,947.0	12,101.4	350.5	135.9	1.633	CC
McConahay 1D-34H-H266 - Hz - Plan #1	11,947.0	12,101.4	350.5	135.9	1.633	ES, SF
McConahay 1E-34H-H266 - Hz - Plan #1						Out of range
MCCONAHAY 31-34 (EXISTING) - ENCANA WELL - GY						Out of range
MCCONAHAY 31-34 (EXISTING) MRP - MACHII-ROSS						Out of range
MCCONAHAY 33-34 (EXISTING) - FOUNDATION WELL						Out of range
MCCONAHAY 41-34 (EXISTING) - ENCANA WELL - GY						Out of range
MCCONAHAY 43-34 (EXISTING) - ENCANA WELL - NO	7,759.4	7,293.5	232.9	204.7	8.264	CC, ES, SF
MCCONAHAY 44-34 (EXISTING) - ENCANA WELL - NO	200.0	186.0	37.3	36.7	57.290	CC, ES
MCCONAHAY 44-34 (EXISTING) - ENCANA WELL - NO	500.0	485.5	50.6	48.9	29.587	SF
McConahay 4A-34H-P266 - Hz - Plan #2	208.7	218.8	10.9	10.2	16.066	CC, ES
McConahay 4A-34H-P266 - Hz - Plan #2	11,700.0	11,871.9	497.5	308.3	2.630	SF
McConahay 4B-34H-P266 - Hz - Plan #3	200.0	210.0	21.9	21.2	33.677	CC, ES
McConahay 4B-34H-P266 - Hz - Plan #3	500.0	510.1	34.2	32.5	19.975	SF
McConahay 4C-34H-P266 - Hz - Plan #2	200.0	210.0	29.1	28.5	44.892	CC, ES
McConahay 4C-34H-P266 - Hz - Plan #2	500.0	509.4	43.3	41.6	25.397	SF
MCCONAHAY 6-4-34 (EXISTING) - ENCANA WELL - SU						Out of range
RANCHERO 1 (EXISTING) - ENCANA WELL - NO SUR	11,454.6	7,234.0	107.5	-3.7	0.966	Level 1, CC, ES, SF
RANCHERO 12-34 (EXISTING) - MACHII-ROSS WELL						Out of range
RANCHERO 32-34 (EXISTING) - ENCANA WELL - GYR						Out of range
SEYMOUR 34-34 (EXISTING) - ENCANA WELL - NO SU						Out of range

CC - Min centre to center distance or convergent point, SF - min separation factor, ES - min ellipse separation



# Anticollision Report

<b>Company:</b>	EnCana Oil & Gas (USA) Inc	<b>Local Co-ordinate Reference:</b>	Well McConahay 4D-34H-P266
<b>Project:</b>	DJ Wattenberg	<b>TVD Reference:</b>	WELL @ 5091.0ft (Original Well Elev)
<b>Reference Site:</b>	S34-T2N-R66W (McConahay)	<b>MD Reference:</b>	WELL @ 5091.0ft (Original Well Elev)
<b>Site Error:</b>	0.0ft	<b>North Reference:</b>	True
<b>Reference Well:</b>	McConahay 4D-34H-P266	<b>Survey Calculation Method:</b>	Minimum Curvature
<b>Well Error:</b>	0.0ft	<b>Output errors are at</b>	2.00 sigma
<b>Reference Wellbore</b>	Hz	<b>Database:</b>	USA EDM 5000 Multi Users DB
<b>Reference Design:</b>	Plan #1	<b>Offset TVD Reference:</b>	Offset Datum

Offset Design S34-T2N-R66W (McConahay) - CONNER 23-34 (EXISTING) - ENCANA WELL - NO SURVEYS													Offset Site Error:	0.0 ft
Survey Program: 8122-Geolink MWD													Offset Well Error:	0.0 ft
Reference		Offset		Semi Major Axis		Highside Toolface (°)	Offset Wellbore Centre		Distance		Total Uncertainty Axis	Separation Factor	Warning	
Measured Depth (ft)	Vertical Depth (ft)	Measured Depth (ft)	Vertical Depth (ft)	Reference (ft)	Offset (ft)		+N/-S (ft)	+E/-W (ft)	Between Centres (ft)	Between Ellipses (ft)				
10,000.0	7,315.0	7,245.0	7,245.0	64.7	12.6	90.00	1,298.8	-2,632.7	495.1	419.2	75.89	6.524		
10,100.0	7,315.0	7,245.0	7,245.0	67.1	12.6	90.00	1,298.8	-2,632.7	414.5	336.2	78.30	5.294		
10,200.0	7,315.0	7,245.0	7,245.0	69.4	12.6	90.00	1,298.8	-2,632.7	344.2	263.5	80.72	4.264		
10,300.0	7,315.0	7,245.0	7,245.0	71.8	12.6	90.00	1,298.8	-2,632.7	291.8	208.7	83.14	3.510		
10,400.0	7,315.0	7,245.0	7,245.0	74.2	12.6	90.00	1,298.8	-2,632.7	268.0	182.5	85.57	3.132		
10,416.6	7,315.0	7,245.0	7,245.0	74.6	12.6	90.00	1,298.8	-2,632.7	267.5	181.6	85.97	3.112	CC, ES, SF	
10,500.0	7,315.0	7,245.0	7,245.0	76.6	12.6	90.00	1,298.8	-2,632.7	280.2	192.2	88.00	3.184		
10,600.0	7,315.0	7,245.0	7,245.0	79.0	12.6	90.00	1,298.8	-2,632.7	324.3	233.9	90.43	3.587		
10,700.0	7,315.0	7,245.0	7,245.0	81.4	12.6	90.00	1,298.8	-2,632.7	389.7	296.8	92.87	4.197		
10,800.0	7,315.0	7,245.0	7,245.0	83.8	12.6	90.00	1,298.8	-2,632.7	467.5	372.2	95.30	4.905		

# Anticollision Report

<b>Company:</b>	EnCana Oil & Gas (USA) Inc	<b>Local Co-ordinate Reference:</b>	Well McConahay 4D-34H-P266
<b>Project:</b>	DJ Wattenberg	<b>TVD Reference:</b>	WELL @ 5091.0ft (Original Well Elev)
<b>Reference Site:</b>	S34-T2N-R66W (McConahay)	<b>MD Reference:</b>	WELL @ 5091.0ft (Original Well Elev)
<b>Site Error:</b>	0.0ft	<b>North Reference:</b>	True
<b>Reference Well:</b>	McConahay 4D-34H-P266	<b>Survey Calculation Method:</b>	Minimum Curvature
<b>Well Error:</b>	0.0ft	<b>Output errors are at</b>	2.00 sigma
<b>Reference Wellbore</b>	Hz	<b>Database:</b>	USA EDM 5000 Multi Users DB
<b>Reference Design:</b>	Plan #1	<b>Offset TVD Reference:</b>	Offset Datum

Offset Design S34-T2N-R66W (McConahay) - DARLENNE 1 (EXISTING) - ENCANA WELL - NO SURVEYS													Offset Site Error:	0.0 ft
Survey Program: 8100-Geolink MWD													Offset Well Error:	0.0 ft
Reference		Offset		Semi Major Axis			Distance							Warning
Measured Depth (ft)	Vertical Depth (ft)	Measured Depth (ft)	Vertical Depth (ft)	Reference (ft)	Offset (ft)	Highside Toolface (°)	Offset Wellbore Centre +N/-S (ft)	+E/-W (ft)	Between Centres (ft)	Between Ellipses (ft)	Total Uncertainty Axis	Separation Factor		
8,300.0	7,315.0	7,275.0	7,275.0	27.8	12.7	-90.00	936.6	-979.5	473.0	436.2	36.83	12.842		
8,400.0	7,315.0	7,275.0	7,275.0	29.5	12.7	-90.00	936.6	-979.5	375.6	336.7	38.88	9.660		
8,500.0	7,315.0	7,275.0	7,275.0	31.4	12.7	-90.00	936.6	-979.5	280.0	239.0	41.00	6.829		
8,600.0	7,315.0	7,275.0	7,275.0	33.3	12.7	-90.00	936.6	-979.5	188.9	145.7	43.17	4.376		
8,700.0	7,315.0	7,275.0	7,275.0	35.3	12.7	-90.00	936.6	-979.5	114.0	68.6	45.38	2.512		
8,763.5	7,315.0	7,275.0	7,275.0	36.7	12.7	-90.00	936.6	-979.5	94.7	47.9	46.81	2.023	CC, ES, SF	
8,800.0	7,315.0	7,275.0	7,275.0	37.4	12.7	-90.00	936.6	-979.5	101.5	53.9	47.63	2.131		
8,900.0	7,315.0	7,275.0	7,275.0	39.6	12.7	-90.00	936.6	-979.5	166.2	116.3	49.91	3.329		
9,000.0	7,315.0	7,275.0	7,275.0	41.7	12.7	-90.00	936.6	-979.5	254.8	202.6	52.21	4.880		
9,100.0	7,315.0	7,275.0	7,275.0	44.0	12.7	-90.00	936.6	-979.5	349.6	295.1	54.53	6.412		
9,200.0	7,315.0	7,275.0	7,275.0	46.2	12.7	-90.00	936.6	-979.5	446.7	389.8	56.86	7.855		

# Anticollision Report

<b>Company:</b>	EnCana Oil & Gas (USA) Inc	<b>Local Co-ordinate Reference:</b>	Well McConahay 4D-34H-P266
<b>Project:</b>	DJ Wattenberg	<b>TVD Reference:</b>	WELL @ 5091.0ft (Original Well Elev)
<b>Reference Site:</b>	S34-T2N-R66W (McConahay)	<b>MD Reference:</b>	WELL @ 5091.0ft (Original Well Elev)
<b>Site Error:</b>	0.0ft	<b>North Reference:</b>	True
<b>Reference Well:</b>	McConahay 4D-34H-P266	<b>Survey Calculation Method:</b>	Minimum Curvature
<b>Well Error:</b>	0.0ft	<b>Output errors are at</b>	2.00 sigma
<b>Reference Wellbore</b>	Hz	<b>Database:</b>	USA EDM 5000 Multi Users DB
<b>Reference Design:</b>	Plan #1	<b>Offset TVD Reference:</b>	Offset Datum

Offset Design S34-T2N-R66W (McConahay) - McConahay 1D-34H-H266 - Hz - Plan #1													Offset Site Error:	0.0 ft
Survey Program: 0-Geolink MWD													Offset Well Error:	0.0 ft
Reference		Offset		Semi Major Axis			Distance							Warning
Measured Depth (ft)	Vertical Depth (ft)	Measured Depth (ft)	Vertical Depth (ft)	Reference (ft)	Offset (ft)	Highside Toolface (°)	Offset Wellbore Centre +N/-S (ft)	+E/-W (ft)	Between Centres (ft)	Between Ellipses (ft)	Total Uncertainty Axis	Separation Factor		
10,300.0	7,315.0	10,491.2	7,289.0	71.8	70.4	87.31	1,521.3	-2,558.9	492.4	356.6	135.82	3.625		
10,400.0	7,315.0	10,590.8	7,289.0	74.2	72.7	87.26	1,512.6	-2,658.1	483.7	343.1	140.61	3.440		
10,500.0	7,315.0	10,690.4	7,289.0	76.6	75.0	87.21	1,503.9	-2,757.4	475.0	329.6	145.41	3.267		
10,600.0	7,315.0	10,790.1	7,289.0	79.0	77.4	87.16	1,495.2	-2,856.6	466.3	316.1	150.21	3.104		
10,700.0	7,315.0	10,889.7	7,289.0	81.4	79.7	87.11	1,486.6	-2,955.9	457.6	302.6	155.02	2.952		
10,800.0	7,315.0	10,989.3	7,289.0	83.8	82.0	87.05	1,477.9	-3,055.1	448.9	289.1	159.84	2.809		
10,900.0	7,315.0	11,088.9	7,289.0	86.2	84.4	86.99	1,469.2	-3,154.3	440.2	275.6	164.66	2.673		
11,000.0	7,315.0	11,188.5	7,289.0	88.6	86.7	86.93	1,460.5	-3,253.6	431.5	262.0	169.48	2.546		
11,100.0	7,315.0	11,288.1	7,289.0	91.0	89.1	86.87	1,451.8	-3,352.8	422.8	248.5	174.31	2.426		
11,200.0	7,315.0	11,387.8	7,289.0	93.5	91.4	86.80	1,443.2	-3,452.1	414.1	235.0	179.14	2.312		
11,300.0	7,315.0	11,487.4	7,289.0	95.9	93.8	86.74	1,434.5	-3,551.3	405.4	221.4	183.97	2.204		
11,400.0	7,315.0	11,587.0	7,289.0	98.3	96.2	86.66	1,425.8	-3,650.6	396.7	207.9	188.81	2.101		
11,500.0	7,315.0	11,686.6	7,289.0	100.7	98.5	86.59	1,417.1	-3,749.8	388.0	194.4	193.65	2.004		
11,600.0	7,315.0	11,786.2	7,289.0	103.2	100.9	86.51	1,408.4	-3,849.0	379.3	180.8	198.49	1.911		
11,700.0	7,315.0	11,885.9	7,289.0	105.6	103.3	86.43	1,399.8	-3,948.3	370.6	167.3	203.33	1.823		
11,800.0	7,315.0	11,985.5	7,289.0	108.0	105.7	86.34	1,391.1	-4,047.5	361.9	153.7	208.17	1.739		
11,900.0	7,315.0	12,085.1	7,289.0	110.5	108.1	86.25	1,382.4	-4,146.8	353.2	140.2	213.01	1.658		
11,947.0	7,315.0	12,101.4	7,289.0	111.6	108.5	86.24	1,381.0	-4,163.0	350.5	135.9	214.55	1.633 CC		
11,947.0	7,315.0	12,101.4	7,289.0	111.6	108.5	86.24	1,381.0	-4,163.0	350.5	135.9	214.55	1.633 ES, SF		

# Anticollision Report

<b>Company:</b>	EnCana Oil & Gas (USA) Inc	<b>Local Co-ordinate Reference:</b>	Well McConahay 4D-34H-P266
<b>Project:</b>	DJ Wattenberg	<b>TVD Reference:</b>	WELL @ 5091.0ft (Original Well Elev)
<b>Reference Site:</b>	S34-T2N-R66W (McConahay)	<b>MD Reference:</b>	WELL @ 5091.0ft (Original Well Elev)
<b>Site Error:</b>	0.0ft	<b>North Reference:</b>	True
<b>Reference Well:</b>	McConahay 4D-34H-P266	<b>Survey Calculation Method:</b>	Minimum Curvature
<b>Well Error:</b>	0.0ft	<b>Output errors are at</b>	2.00 sigma
<b>Reference Wellbore</b>	Hz	<b>Database:</b>	USA EDM 5000 Multi Users DB
<b>Reference Design:</b>	Plan #1	<b>Offset TVD Reference:</b>	Offset Datum

Offset Design S34-T2N-R66W (McConahay) - MCCONAHAY 43-34 (EXISTING) - ENCANA WELL - NO SURVEYS													Offset Site Error: 0.0 ft
Survey Program: 8230-Geolink MWD													Offset Well Error: 0.0 ft
Reference		Offset		Semi Major Axis			Distance						
Measured Depth (ft)	Vertical Depth (ft)	Measured Depth (ft)	Vertical Depth (ft)	Reference (ft)	Offset (ft)	Highside Toolface (°)	Offset Wellbore Centre +N/-S (ft)	+E/-W (ft)	Between Centres (ft)	Between Ellipses (ft)	Total Uncertainty Axis	Separation Factor	Warning
7,300.0	7,151.1	7,128.1	7,128.1	23.1	12.4	32.04	1,264.4	25.7	487.9	459.4	28.44	17.154	
7,400.0	7,214.2	7,191.2	7,191.2	22.9	12.6	46.27	1,264.4	25.7	418.9	392.1	26.77	15.648	
7,500.0	7,263.2	7,240.2	7,240.2	22.7	12.6	63.75	1,264.4	25.7	347.7	321.3	26.38	13.180	
7,600.0	7,296.4	7,273.4	7,273.4	22.6	12.7	79.74	1,264.4	25.7	283.2	256.3	26.92	10.518	
7,700.0	7,313.1	7,290.1	7,290.1	22.6	12.7	88.78	1,264.4	25.7	240.6	212.9	27.62	8.709	
7,759.4	7,316.5	7,293.5	7,293.5	22.7	12.7	90.00	1,264.4	25.7	232.9	204.7	28.19	8.264	CC, ES, SF
7,800.0	7,315.0	7,292.0	7,292.0	22.8	12.7	90.00	1,264.4	25.7	236.9	208.3	28.57	8.290	
7,900.0	7,315.0	7,292.0	7,292.0	23.2	12.7	90.00	1,264.4	25.7	272.9	243.0	29.84	9.144	
8,000.0	7,315.0	7,292.0	7,292.0	23.9	12.7	90.00	1,264.4	25.7	335.9	304.5	31.35	10.713	
8,100.0	7,315.0	7,292.0	7,292.0	24.9	12.7	90.00	1,264.4	25.7	413.7	380.7	33.05	12.517	
8,200.0	7,315.0	7,292.0	7,292.0	26.3	12.7	90.00	1,264.4	25.7	499.5	464.6	34.90	14.312	

# Anticollision Report

<b>Company:</b>	EnCana Oil & Gas (USA) Inc	<b>Local Co-ordinate Reference:</b>	Well McConahay 4D-34H-P266
<b>Project:</b>	DJ Wattenberg	<b>TVD Reference:</b>	WELL @ 5091.0ft (Original Well Elev)
<b>Reference Site:</b>	S34-T2N-R66W (McConahay)	<b>MD Reference:</b>	WELL @ 5091.0ft (Original Well Elev)
<b>Site Error:</b>	0.0ft	<b>North Reference:</b>	True
<b>Reference Well:</b>	McConahay 4D-34H-P266	<b>Survey Calculation Method:</b>	Minimum Curvature
<b>Well Error:</b>	0.0ft	<b>Output errors are at</b>	2.00 sigma
<b>Reference Wellbore</b>	Hz	<b>Database:</b>	USA EDM 5000 Multi Users DB
<b>Reference Design:</b>	Plan #1	<b>Offset TVD Reference:</b>	Offset Datum

Offset Design S34-T2N-R66W (McConahay) - MCCONAHAY 44-34 (EXISTING) - ENCANA WELL - NO SURVEYS													Offset Site Error:	0.0 ft
Survey Program: 8257-Geolink MWD													Offset Well Error:	0.0 ft
Reference		Offset		Semi Major Axis		Distance		Total		Separation		Warning		
Measured Depth (ft)	Vertical Depth (ft)	Measured Depth (ft)	Vertical Depth (ft)	Reference (ft)	Offset (ft)	Highside Toolface (°)	Offset Wellbore Centre +N/-S (ft)	+E/-W (ft)	Between Centres (ft)	Between Ellipses (ft)	Uncertainty Axis	Factor		
0.0	0.0	0.0	0.0	0.0	0.0	174.84	-37.2	3.4	39.8					
100.0	100.0	86.0	86.0	0.2	0.2	174.84	-37.2	3.4	37.3	37.0	0.30	123.478		
200.0	200.0	186.0	186.0	0.3	0.3	174.84	-37.2	3.4	37.3	36.7	0.65	57.290 CC, ES		
300.0	300.0	286.0	286.0	0.5	0.5	143.49	-37.2	3.4	38.7	37.7	1.00	38.646		
400.0	399.8	385.8	385.8	0.7	0.7	147.60	-37.2	3.4	43.0	41.7	1.35	31.749		
500.0	499.5	485.5	485.5	0.9	0.8	152.82	-37.2	3.4	50.6	48.9	1.71	29.587 SF		
600.0	598.7	584.7	584.7	1.2	1.0	157.91	-37.2	3.4	61.7	59.6	2.06	29.915		
700.0	697.5	683.5	683.5	1.5	1.2	162.22	-37.2	3.4	76.4	74.0	2.41	31.720		
800.0	795.9	781.9	781.9	1.8	1.4	165.52	-37.2	3.4	93.4	90.6	2.76	33.890		
900.0	894.3	880.3	880.3	2.2	1.5	167.80	-37.2	3.4	110.6	107.5	3.10	35.655		
1,000.0	992.8	978.8	978.8	2.5	1.7	169.47	-37.2	3.4	127.8	124.4	3.45	37.111		
1,100.0	1,091.2	1,077.2	1,077.2	2.9	1.9	170.74	-37.2	3.4	145.2	141.4	3.79	38.326		
1,200.0	1,189.6	1,175.6	1,175.6	3.2	2.1	171.74	-37.2	3.4	162.6	158.5	4.13	39.354		
1,300.0	1,288.1	1,274.1	1,274.1	3.6	2.2	172.54	-37.2	3.4	180.1	175.6	4.48	40.232		
1,400.0	1,386.5	1,372.5	1,372.5	3.9	2.4	173.21	-37.2	3.4	197.6	192.8	4.82	40.991		
1,500.0	1,484.9	1,470.9	1,470.9	4.3	2.6	173.76	-37.2	3.4	215.1	210.0	5.16	41.652		
1,600.0	1,583.4	1,569.4	1,569.4	4.6	2.7	174.23	-37.2	3.4	232.7	227.2	5.51	42.233		
1,700.0	1,681.8	1,667.8	1,667.8	5.0	2.9	174.64	-37.2	3.4	250.2	244.4	5.85	42.747		
1,800.0	1,780.2	1,766.2	1,766.2	5.3	3.1	174.99	-37.2	3.4	267.8	261.6	6.20	43.206		
1,900.0	1,878.7	1,864.7	1,864.7	5.7	3.3	175.30	-37.2	3.4	285.3	278.8	6.54	43.617		
2,000.0	1,977.1	1,963.1	1,963.1	6.0	3.4	175.57	-37.2	3.4	302.9	296.0	6.89	43.987		
2,100.0	2,075.5	2,061.5	2,061.5	6.4	3.6	175.82	-37.2	3.4	320.5	313.3	7.23	44.323		
2,200.0	2,174.0	2,160.0	2,160.0	6.7	3.8	176.04	-37.2	3.4	338.1	330.5	7.58	44.629		
2,300.0	2,272.4	2,258.4	2,258.4	7.1	3.9	176.23	-37.2	3.4	355.7	347.7	7.92	44.908		
2,400.0	2,370.8	2,356.8	2,356.8	7.4	4.1	176.41	-37.2	3.4	373.2	365.0	8.26	45.164		
2,500.0	2,469.3	2,455.3	2,455.3	7.8	4.3	176.57	-37.2	3.4	390.8	382.2	8.61	45.400		
2,600.0	2,567.7	2,553.7	2,553.7	8.2	4.5	176.72	-37.2	3.4	408.4	399.5	8.95	45.618		
2,700.0	2,666.2	2,652.2	2,652.2	8.5	4.6	176.85	-37.2	3.4	426.0	416.7	9.30	45.820		
2,800.0	2,764.6	2,750.6	2,750.6	8.9	4.8	176.98	-37.2	3.4	443.6	434.0	9.64	46.007		
2,900.0	2,863.0	2,849.0	2,849.0	9.2	5.0	177.09	-37.2	3.4	461.2	451.3	9.99	46.181		
3,000.0	2,961.5	2,947.5	2,947.5	9.6	5.1	177.20	-37.2	3.4	478.9	468.5	10.33	46.344		
3,100.0	3,059.9	3,045.9	3,045.9	9.9	5.3	177.30	-37.2	3.4	496.5	485.8	10.68	46.497		

# Anticollision Report

<b>Company:</b>	EnCana Oil & Gas (USA) Inc	<b>Local Co-ordinate Reference:</b>	Well McConahay 4D-34H-P266
<b>Project:</b>	DJ Wattenberg	<b>TVD Reference:</b>	WELL @ 5091.0ft (Original Well Elev)
<b>Reference Site:</b>	S34-T2N-R66W (McConahay)	<b>MD Reference:</b>	WELL @ 5091.0ft (Original Well Elev)
<b>Site Error:</b>	0.0ft	<b>North Reference:</b>	True
<b>Reference Well:</b>	McConahay 4D-34H-P266	<b>Survey Calculation Method:</b>	Minimum Curvature
<b>Well Error:</b>	0.0ft	<b>Output errors are at</b>	2.00 sigma
<b>Reference Wellbore</b>	Hz	<b>Database:</b>	USA EDM 5000 Multi Users DB
<b>Reference Design:</b>	Plan #1	<b>Offset TVD Reference:</b>	Offset Datum

Offset Design S34-T2N-R66W (McConahay) - McConahay 4A-34H-P266 - Hz - Plan #2													Offset Site Error:	0.0 ft
Survey Program: 0-Geolink MWD													Offset Well Error:	0.0 ft
Reference		Offset		Semi Major Axis			Distance							Warning
Measured Depth (ft)	Vertical Depth (ft)	Measured Depth (ft)	Vertical Depth (ft)	Reference (ft)	Offset (ft)	Highside Toolface (°)	Offset Wellbore Centre +N/-S (ft)	+E/-W (ft)	Between Centres (ft)	Between Ellipses (ft)	Total Uncertainty Axis	Separation Factor		
0.0	0.0	10.0	10.0	0.0	0.0	-180.00	-10.9	0.0	10.9					
100.0	100.0	110.0	110.0	0.2	0.1	-180.00	-10.9	0.0	10.9	10.6	0.30	36.432		
200.0	200.0	210.0	210.0	0.3	0.3	179.97	-10.9	0.0	10.9	10.3	0.65	16.832		
208.7	208.7	218.8	218.8	0.3	0.3	147.02	-10.9	0.0	10.9	10.2	0.68	16.066	CC, ES	
300.0	300.0	310.2	310.2	0.5	0.5	148.50	-10.1	0.7	11.6	10.6	1.00	11.580		
400.0	399.8	410.3	410.3	0.7	0.7	152.82	-7.9	2.4	13.9	12.5	1.35	10.230		
500.0	499.5	510.5	510.3	0.9	0.9	157.68	-4.4	5.2	17.9	16.2	1.71	10.444		
600.0	598.7	610.6	610.3	1.2	1.1	161.74	0.6	9.2	23.7	21.6	2.07	11.455		
700.0	697.5	710.7	710.1	1.5	1.3	164.75	6.8	14.2	31.3	28.8	2.42	12.918		
800.0	795.9	811.0	809.8	1.8	1.5	166.46	14.5	20.3	39.2	36.4	2.78	14.103		
900.0	894.3	911.5	909.7	2.2	1.8	166.90	23.5	27.5	45.5	42.4	3.15	14.461		
1,000.0	992.8	1,012.2	1,009.5	2.5	2.1	166.60	34.0	35.8	50.2	46.7	3.53	14.233		
1,100.0	1,091.2	1,112.7	1,108.9	2.9	2.4	165.77	45.7	45.2	53.3	49.4	3.92	13.606		
1,200.0	1,189.6	1,212.7	1,207.6	3.2	2.7	164.90	57.6	54.7	56.1	51.8	4.32	12.992		
1,300.0	1,288.1	1,312.6	1,306.4	3.6	3.0	164.11	69.5	64.2	58.9	54.2	4.72	12.468		
1,400.0	1,386.5	1,412.6	1,405.2	3.9	3.3	163.39	81.4	73.7	61.7	56.6	5.13	12.016		
1,500.0	1,484.9	1,512.5	1,504.0	4.3	3.6	162.73	93.4	83.2	64.5	58.9	5.55	11.622		
1,600.0	1,583.4	1,612.5	1,602.8	4.6	3.9	162.13	105.3	92.8	67.3	61.3	5.97	11.275		
1,700.0	1,681.8	1,712.4	1,701.6	5.0	4.2	161.58	117.2	102.3	70.1	63.7	6.39	10.967		
1,800.0	1,780.2	1,812.4	1,800.4	5.3	4.5	161.07	129.1	111.8	73.0	66.1	6.82	10.693		
1,900.0	1,878.7	1,912.4	1,899.2	5.7	4.8	160.60	141.0	121.3	75.8	68.5	7.25	10.447		
2,000.0	1,977.1	2,012.3	1,997.9	6.0	5.1	160.16	153.0	130.8	78.6	70.9	7.69	10.226		
2,100.0	2,075.5	2,112.3	2,096.7	6.4	5.5	159.75	164.9	140.3	81.5	73.3	8.13	10.025		
2,200.0	2,174.0	2,212.2	2,195.5	6.7	5.8	159.37	176.8	149.8	84.3	75.7	8.57	9.842		
2,300.0	2,272.4	2,312.2	2,294.3	7.1	6.1	159.02	188.7	159.4	87.2	78.2	9.01	9.675		
2,400.0	2,370.8	2,412.2	2,393.1	7.4	6.4	158.68	200.7	168.9	90.0	80.6	9.45	9.522		
2,500.0	2,469.3	2,512.1	2,491.9	7.8	6.7	158.37	212.6	178.4	92.9	83.0	9.90	9.381		
2,600.0	2,567.7	2,612.1	2,590.7	8.2	7.0	158.08	224.5	187.9	95.7	85.4	10.35	9.251		
2,700.0	2,666.2	2,712.0	2,689.5	8.5	7.4	157.80	236.4	197.4	98.6	87.8	10.80	9.131		
2,800.0	2,764.6	2,812.0	2,788.2	8.9	7.7	157.54	248.3	206.9	101.4	90.2	11.25	9.019		
2,900.0	2,863.0	2,911.9	2,887.0	9.2	8.0	157.29	260.3	216.4	104.3	92.6	11.70	8.915		
3,000.0	2,961.5	3,011.9	2,985.8	9.6	8.3	157.06	272.2	226.0	107.2	95.0	12.15	8.818		
3,100.0	3,059.9	3,111.9	3,084.6	9.9	8.6	156.84	284.1	235.5	110.0	97.4	12.61	8.728		
3,200.0	3,158.3	3,211.8	3,183.4	10.3	9.0	156.63	296.0	245.0	112.9	99.8	13.06	8.643		
3,300.0	3,256.8	3,311.8	3,282.2	10.6	9.3	156.43	307.9	254.5	115.8	102.3	13.52	8.563		
3,400.0	3,355.2	3,411.7	3,381.0	11.0	9.6	156.24	319.9	264.0	118.7	104.7	13.98	8.488		
3,500.0	3,453.6	3,511.7	3,479.8	11.3	9.9	156.06	331.8	273.5	121.5	107.1	14.44	8.418		
3,600.0	3,552.1	3,611.6	3,578.5	11.7	10.2	155.89	343.7	283.0	124.4	109.5	14.90	8.351		
3,700.0	3,650.5	3,711.6	3,677.3	12.1	10.5	155.72	355.6	292.6	127.3	111.9	15.36	8.288		
3,800.0	3,748.9	3,811.6	3,776.1	12.4	10.9	155.56	367.6	302.1	130.1	114.3	15.82	8.229		
3,900.0	3,847.4	3,911.5	3,874.9	12.8	11.2	155.41	379.5	311.6	133.0	116.7	16.28	8.172		
4,000.0	3,945.8	4,011.5	3,973.7	13.1	11.5	155.27	391.4	321.1	135.9	119.2	16.74	8.119		
4,100.0	4,044.2	4,111.4	4,072.5	13.5	11.8	155.13	403.3	330.6	138.8	121.6	17.20	8.068		
4,200.0	4,142.7	4,211.4	4,171.3	13.8	12.1	155.00	415.2	340.1	141.7	124.0	17.67	8.019		
4,300.0	4,241.1	4,311.4	4,270.1	14.2	12.5	154.87	427.2	349.6	144.5	126.4	18.13	7.973		
4,400.0	4,339.5	4,411.3	4,368.8	14.5	12.8	154.75	439.1	359.2	147.4	128.8	18.59	7.929		
4,500.0	4,438.0	4,511.3	4,467.6	14.9	13.1	154.63	451.0	368.7	150.3	131.2	19.06	7.887		
4,600.0	4,536.4	4,611.2	4,566.4	15.2	13.4	154.52	462.9	378.2	153.2	133.7	19.52	7.847		
4,700.0	4,634.8	4,711.2	4,665.2	15.6	13.7	154.41	474.8	387.7	156.1	136.1	19.99	7.808		
4,800.0	4,733.3	4,811.1	4,764.0	16.0	14.0	154.30	486.8	397.2	159.0	138.5	20.45	7.772		
4,900.0	4,831.7	4,911.1	4,862.8	16.3	14.4	154.20	498.7	406.7	161.8	140.9	20.92	7.736		
5,000.0	4,930.1	5,011.1	4,961.6	16.7	14.7	154.10	510.6	416.2	164.7	143.3	21.39	7.703		

CC - Min centre to center distance or convergent point, SF - min separation factor, ES - min ellipse separation

# Anticollision Report

<b>Company:</b>	EnCana Oil & Gas (USA) Inc	<b>Local Co-ordinate Reference:</b>	Well McConahay 4D-34H-P266
<b>Project:</b>	DJ Wattenberg	<b>TVD Reference:</b>	WELL @ 5091.0ft (Original Well Elev)
<b>Reference Site:</b>	S34-T2N-R66W (McConahay)	<b>MD Reference:</b>	WELL @ 5091.0ft (Original Well Elev)
<b>Site Error:</b>	0.0ft	<b>North Reference:</b>	True
<b>Reference Well:</b>	McConahay 4D-34H-P266	<b>Survey Calculation Method:</b>	Minimum Curvature
<b>Well Error:</b>	0.0ft	<b>Output errors are at</b>	2.00 sigma
<b>Reference Wellbore</b>	Hz	<b>Database:</b>	USA EDM 5000 Multi Users DB
<b>Reference Design:</b>	Plan #1	<b>Offset TVD Reference:</b>	Offset Datum

Offset Design S34-T2N-R66W (McConahay) - McConahay 4A-34H-P266 - Hz - Plan #2													Offset Site Error:	0.0 ft
Survey Program: 0-Geolink MWD													Offset Well Error:	0.0 ft
Reference		Offset		Semi Major Axis		Distance		Total		Separation		Warning		
Measured Depth (ft)	Vertical Depth (ft)	Measured Depth (ft)	Vertical Depth (ft)	Reference (ft)	Offset (ft)	Highside Toolface (°)	Offset Wellbore Centre +N/-S (ft)	+E/-W (ft)	Between Centres (ft)	Between Ellipses (ft)	Uncertainty Axis			
5,100.0	5,028.6	5,111.0	5,060.4	17.0	15.0	154.01	522.5	425.8	167.6	145.8	21.85	7.670		
5,200.0	5,127.0	5,211.0	5,159.1	17.4	15.3	153.92	534.4	435.3	170.5	148.2	22.32	7.639		
5,300.0	5,225.4	5,310.9	5,257.9	17.7	15.6	153.83	546.4	444.8	173.4	150.6	22.79	7.609		
5,400.0	5,323.9	5,410.9	5,356.7	18.1	16.0	153.74	558.3	454.3	176.3	153.0	23.25	7.580		
5,500.0	5,422.3	5,510.8	5,455.5	18.4	16.3	153.66	570.2	463.8	179.1	155.4	23.72	7.552		
5,600.0	5,520.7	5,610.8	5,554.3	18.8	16.6	153.58	582.1	473.3	182.0	157.8	24.19	7.526		
5,700.0	5,619.2	5,710.8	5,653.1	19.1	16.9	153.50	594.1	482.9	184.9	160.3	24.66	7.500		
5,800.0	5,717.6	5,810.7	5,751.9	19.5	17.2	153.43	606.0	492.4	187.8	162.7	25.13	7.475		
5,900.0	5,816.0	5,910.7	5,850.7	19.9	17.6	153.36	617.9	501.9	190.7	165.1	25.59	7.451		
6,000.0	5,914.5	6,010.6	5,949.4	20.2	17.9	153.29	629.8	511.4	193.6	167.5	26.06	7.428		
6,100.0	6,012.9	6,110.6	6,048.2	20.6	18.2	153.22	641.7	520.9	196.5	169.9	26.53	7.405		
6,200.0	6,111.3	6,210.6	6,147.0	20.9	18.5	153.15	653.7	530.4	199.4	172.4	27.00	7.384		
6,300.0	6,209.8	6,310.5	6,245.8	21.3	18.8	153.09	665.6	539.9	202.2	174.8	27.47	7.363		
6,400.0	6,308.2	6,410.5	6,344.6	21.6	19.1	153.02	677.5	549.5	205.1	177.2	27.94	7.342		
6,500.0	6,406.7	6,510.4	6,443.4	22.0	19.5	152.96	689.4	559.0	208.0	179.6	28.41	7.323		
6,600.0	6,505.1	6,610.4	6,542.2	22.3	19.8	152.90	701.3	568.5	210.9	182.0	28.88	7.303		
6,700.0	6,603.5	6,710.3	6,641.0	22.7	20.1	152.84	713.3	578.0	213.8	184.5	29.35	7.285		
6,800.0	6,702.0	6,810.3	6,739.7	23.0	20.4	152.77	725.2	587.5	216.7	186.9	29.82	7.268		
6,900.0	6,800.7	6,909.6	6,837.9	23.3	20.7	-145.58	737.0	597.0	218.9	187.9	30.96	7.069		
7,000.0	6,897.9	7,005.9	6,933.1	23.4	21.0	-123.17	748.5	605.7	222.1	189.0	33.14	6.701		
7,100.0	6,990.5	7,104.0	7,030.4	23.4	21.2	-119.96	759.6	603.1	230.0	195.2	34.74	6.620		
7,200.0	7,075.8	7,208.3	7,131.8	23.2	21.2	-121.60	770.2	582.1	242.5	207.5	34.97	6.933		
7,300.0	7,151.1	7,319.6	7,234.2	23.1	21.0	-124.47	779.8	539.7	258.3	224.5	33.77	7.647		
7,400.0	7,214.2	7,439.1	7,332.8	22.9	20.7	-127.30	787.8	473.1	275.7	244.2	31.48	8.760		
7,500.0	7,263.2	7,567.1	7,420.9	22.7	20.3	-129.58	793.1	380.7	292.9	264.2	28.75	10.188		
7,600.0	7,296.4	7,703.5	7,490.0	22.6	19.9	-131.04	795.0	263.6	307.9	281.4	26.59	11.581		
7,700.0	7,313.1	7,846.7	7,531.0	22.6	19.7	-131.56	792.5	126.8	319.2	293.1	26.14	12.215		
7,800.0	7,315.0	7,977.3	7,539.0	22.8	19.8	-131.18	786.6	-3.2	325.3	297.6	27.62	11.776		
7,900.0	7,315.0	8,077.1	7,539.0	23.2	20.2	-130.58	781.4	-102.9	329.2	299.7	29.55	11.140		
8,000.0	7,315.0	8,177.0	7,539.0	23.9	21.0	-130.00	776.2	-202.7	333.2	301.4	31.86	10.460		
8,100.0	7,315.0	8,276.9	7,539.0	24.9	22.3	-129.42	771.0	-302.4	337.3	302.8	34.48	9.781		
8,200.0	7,315.0	8,376.7	7,539.0	26.3	23.8	-128.87	765.7	-402.1	341.3	303.9	37.38	9.131		
8,300.0	7,315.0	8,476.6	7,539.0	27.8	25.6	-128.32	760.5	-501.9	345.4	304.9	40.50	8.528		
8,400.0	7,315.0	8,576.5	7,539.0	29.5	27.4	-127.79	755.3	-601.6	349.5	305.7	43.82	7.976		
8,500.0	7,315.0	8,676.3	7,539.0	31.4	29.4	-127.27	750.1	-701.3	353.7	306.4	47.30	7.478		
8,600.0	7,315.0	8,776.2	7,539.0	33.3	31.4	-126.76	744.8	-801.0	357.9	306.9	50.92	7.029		
8,700.0	7,315.0	8,876.0	7,539.0	35.3	33.5	-126.27	739.6	-900.8	362.1	307.4	54.65	6.625		
8,800.0	7,315.0	8,975.9	7,539.0	37.4	35.7	-125.78	734.4	-1,000.5	366.3	307.8	58.49	6.263		
8,900.0	7,315.0	9,075.8	7,539.0	39.6	37.9	-125.31	729.2	-1,100.2	370.6	308.1	62.42	5.936		
9,000.0	7,315.0	9,175.6	7,539.0	41.7	40.1	-124.85	723.9	-1,199.9	374.8	308.4	66.43	5.643		
9,100.0	7,315.0	9,275.5	7,539.0	44.0	42.3	-124.40	718.7	-1,299.7	379.2	308.6	70.52	5.377		
9,200.0	7,315.0	9,375.4	7,539.0	46.2	44.6	-123.96	713.5	-1,399.4	383.5	308.8	74.66	5.136		
9,300.0	7,315.0	9,475.2	7,539.0	48.4	46.9	-123.52	708.2	-1,499.1	387.8	309.0	78.87	4.918		
9,400.0	7,315.0	9,575.1	7,539.0	50.7	49.2	-123.10	703.0	-1,598.8	392.2	309.1	83.12	4.719		
9,500.0	7,315.0	9,674.9	7,539.0	53.0	51.5	-122.69	697.8	-1,698.6	396.6	309.2	87.43	4.537		
9,600.0	7,315.0	9,774.8	7,539.0	55.3	53.8	-122.29	692.6	-1,798.3	401.0	309.3	91.78	4.370		
9,700.0	7,315.0	9,874.7	7,539.0	57.7	56.2	-121.89	687.3	-1,898.0	405.5	309.3	96.16	4.216		
9,800.0	7,315.0	9,974.5	7,539.0	60.0	58.5	-121.50	682.1	-1,997.7	409.9	309.3	100.59	4.075		
9,900.0	7,315.0	10,074.4	7,539.0	62.4	60.9	-121.13	676.9	-2,097.5	414.4	309.3	105.05	3.945		
10,000.0	7,315.0	10,174.3	7,539.0	64.7	63.2	-120.76	671.7	-2,197.2	418.9	309.3	109.54	3.824		
10,100.0	7,315.0	10,274.1	7,539.0	67.1	65.6	-120.39	666.4	-2,296.9	423.4	309.3	114.06	3.712		
10,200.0	7,315.0	10,374.0	7,539.0	69.4	68.0	-120.04	661.2	-2,396.6	427.9	309.3	118.61	3.608		

CC - Min centre to center distance or convergent point, SF - min separation factor, ES - min ellipse separation

# Anticollision Report

<b>Company:</b>	EnCana Oil & Gas (USA) Inc	<b>Local Co-ordinate Reference:</b>	Well McConahay 4D-34H-P266
<b>Project:</b>	DJ Wattenberg	<b>TVD Reference:</b>	WELL @ 5091.0ft (Original Well Elev)
<b>Reference Site:</b>	S34-T2N-R66W (McConahay)	<b>MD Reference:</b>	WELL @ 5091.0ft (Original Well Elev)
<b>Site Error:</b>	0.0ft	<b>North Reference:</b>	True
<b>Reference Well:</b>	McConahay 4D-34H-P266	<b>Survey Calculation Method:</b>	Minimum Curvature
<b>Well Error:</b>	0.0ft	<b>Output errors are at</b>	2.00 sigma
<b>Reference Wellbore</b>	Hz	<b>Database:</b>	USA EDM 5000 Multi Users DB
<b>Reference Design:</b>	Plan #1	<b>Offset TVD Reference:</b>	Offset Datum

Offset Design S34-T2N-R66W (McConahay) - McConahay 4A-34H-P266 - Hz - Plan #2													Offset Site Error:	0.0 ft
Survey Program: 0-Geolink MWD													Offset Well Error:	0.0 ft
Reference		Offset		Semi Major Axis			Distance							
Measured Depth (ft)	Vertical Depth (ft)	Measured Depth (ft)	Vertical Depth (ft)	Reference (ft)	Offset (ft)	Highside Toolface (°)	Offset Wellbore Centre +N/-S (ft)	+E/-W (ft)	Between Centres (ft)	Between Ellipses (ft)	Total Uncertainty Axis	Separation Factor	Warning	
10,300.0	7,315.0	10,473.9	7,539.0	71.8	70.4	-119.69	656.0	-2,496.4	432.5	309.3	123.18	3.511		
10,400.0	7,315.0	10,573.7	7,539.0	74.2	72.8	-119.35	650.8	-2,596.1	437.0	309.2	127.78	3.420		
10,500.0	7,315.0	10,673.6	7,539.0	76.6	75.2	-119.02	645.5	-2,695.8	441.6	309.2	132.40	3.335		
10,600.0	7,315.0	10,773.4	7,539.0	79.0	77.6	-118.69	640.3	-2,795.6	446.2	309.1	137.04	3.256		
10,700.0	7,315.0	10,873.3	7,539.0	81.4	80.0	-118.38	635.1	-2,895.3	450.8	309.1	141.70	3.181		
10,800.0	7,315.0	10,973.2	7,539.0	83.8	82.4	-118.06	629.9	-2,995.0	455.4	309.0	146.38	3.111		
10,900.0	7,315.0	11,073.0	7,539.0	86.2	84.8	-117.76	624.6	-3,094.7	460.0	308.9	151.07	3.045		
11,000.0	7,315.0	11,172.9	7,539.0	88.6	87.2	-117.46	619.4	-3,194.5	464.6	308.9	155.78	2.983		
11,100.0	7,315.0	11,272.8	7,539.0	91.0	89.6	-117.16	614.2	-3,294.2	469.3	308.8	160.51	2.924		
11,200.0	7,315.0	11,372.6	7,539.0	93.5	92.1	-116.87	608.9	-3,393.9	474.0	308.7	165.25	2.868		
11,300.0	7,315.0	11,472.5	7,539.0	95.9	94.5	-116.59	603.7	-3,493.6	478.6	308.6	170.01	2.815		
11,400.0	7,315.0	11,572.3	7,539.0	98.3	96.9	-116.31	598.5	-3,593.4	483.3	308.5	174.78	2.765		
11,500.0	7,315.0	11,672.2	7,539.0	100.7	99.3	-116.04	593.3	-3,693.1	488.0	308.5	179.55	2.718		
11,600.0	7,315.0	11,772.1	7,539.0	103.2	101.8	-115.77	588.0	-3,792.8	492.7	308.4	184.35	2.673		
11,700.0	7,315.0	11,871.9	7,539.0	105.6	104.2	-115.51	582.8	-3,892.5	497.5	308.3	189.15	2.630 SF		



# Anticollision Report

<b>Company:</b>	EnCana Oil & Gas (USA) Inc	<b>Local Co-ordinate Reference:</b>	Well McConahay 4D-34H-P266
<b>Project:</b>	DJ Wattenberg	<b>TVD Reference:</b>	WELL @ 5091.0ft (Original Well Elev)
<b>Reference Site:</b>	S34-T2N-R66W (McConahay)	<b>MD Reference:</b>	WELL @ 5091.0ft (Original Well Elev)
<b>Site Error:</b>	0.0ft	<b>North Reference:</b>	True
<b>Reference Well:</b>	McConahay 4D-34H-P266	<b>Survey Calculation Method:</b>	Minimum Curvature
<b>Well Error:</b>	0.0ft	<b>Output errors are at</b>	2.00 sigma
<b>Reference Wellbore</b>	Hz	<b>Database:</b>	USA EDM 5000 Multi Users DB
<b>Reference Design:</b>	Plan #1	<b>Offset TVD Reference:</b>	Offset Datum

Offset Design S34-T2N-R66W (McConahay) - McConahay 4B-34H-P266 - Hz - Plan #3												Offset Site Error: 0.0 ft	
Survey Program: 0-Geolink MWD												Offset Well Error: 0.0 ft	
Reference		Offset		Semi Major Axis			Distance						Warning
Measured Depth (ft)	Vertical Depth (ft)	Measured Depth (ft)	Vertical Depth (ft)	Reference (ft)	Offset (ft)	Highside Toolface (°)	Offset Wellbore Centre +N/-S (ft)	+E/-W (ft)	Between Centres (ft)	Between Ellipses (ft)	Total Uncertainty Axis	Separation Factor	
0.0	0.0	10.0	10.0	0.0	0.0	180.00	-21.9	0.0	21.9				
100.0	100.0	110.0	110.0	0.2	0.1	180.00	-21.9	0.0	21.9	21.6	0.30	72.836	
200.0	200.0	210.0	210.0	0.3	0.3	180.00	-21.9	0.0	21.9	21.2	0.65	33.677	CC, ES
300.0	300.0	310.0	310.0	0.5	0.5	149.37	-21.9	0.0	23.3	22.3	1.00	23.368	
400.0	399.8	410.1	410.1	0.7	0.7	152.85	-21.5	1.0	27.5	26.2	1.35	20.363	
500.0	499.5	510.1	510.0	0.9	0.9	155.19	-20.7	3.7	34.2	32.5	1.71	19.975	SF
600.0	598.7	609.9	609.8	1.2	1.0	156.53	-19.2	8.0	43.3	41.2	2.08	20.791	
700.0	697.5	709.7	709.3	1.5	1.2	157.16	-17.3	13.9	54.7	52.3	2.47	22.197	
800.0	795.9	809.4	808.7	1.8	1.4	156.98	-14.8	21.5	67.2	64.3	2.87	23.395	
900.0	894.3	909.3	908.2	2.2	1.7	155.75	-11.8	30.7	78.9	75.6	3.31	23.844	
1,000.0	992.8	1,008.7	1,007.0	2.5	1.9	154.27	-8.4	40.9	90.2	86.4	3.76	23.954	
1,100.0	1,091.2	1,108.0	1,105.7	2.9	2.2	153.12	-5.1	51.0	101.5	97.3	4.23	23.998	
1,200.0	1,189.6	1,207.4	1,204.5	3.2	2.4	152.20	-1.8	61.2	112.8	108.1	4.70	24.005	
1,300.0	1,288.1	1,306.7	1,303.3	3.6	2.6	151.45	1.6	71.3	124.2	119.0	5.18	23.991	
1,400.0	1,386.5	1,406.0	1,402.0	3.9	2.9	150.83	4.9	81.4	135.6	130.0	5.66	23.966	
1,500.0	1,484.9	1,505.4	1,500.8	4.3	3.1	150.30	8.2	91.6	147.0	140.9	6.14	23.935	
1,600.0	1,583.4	1,604.7	1,599.6	4.6	3.4	149.85	11.6	101.7	158.4	151.8	6.63	23.901	
1,700.0	1,681.8	1,704.1	1,698.3	5.0	3.6	149.46	14.9	111.8	169.9	162.8	7.12	23.867	
1,800.0	1,780.2	1,803.4	1,797.1	5.3	3.9	149.11	18.2	122.0	181.3	173.7	7.61	23.832	
1,900.0	1,878.7	1,902.7	1,895.8	5.7	4.1	148.81	21.6	132.1	192.7	184.6	8.10	23.799	
2,000.0	1,977.1	2,002.1	1,994.6	6.0	4.4	148.55	24.9	142.2	204.2	195.6	8.59	23.768	
2,100.0	2,075.5	2,101.4	2,093.4	6.4	4.6	148.31	28.2	152.4	215.6	206.6	9.08	23.737	
2,200.0	2,174.0	2,200.8	2,192.1	6.7	4.9	148.09	31.6	162.5	227.1	217.5	9.58	23.709	
2,300.0	2,272.4	2,300.1	2,290.9	7.1	5.1	147.90	34.9	172.6	238.5	228.5	10.07	23.681	
2,400.0	2,370.8	2,399.4	2,389.7	7.4	5.4	147.72	38.2	182.8	250.0	239.4	10.57	23.656	
2,500.0	2,469.3	2,498.8	2,488.4	7.8	5.7	147.56	41.6	192.9	261.5	250.4	11.06	23.631	
2,600.0	2,567.7	2,598.1	2,587.2	8.2	5.9	147.41	44.9	203.0	272.9	261.4	11.56	23.609	
2,700.0	2,666.2	2,697.4	2,686.0	8.5	6.2	147.28	48.2	213.2	284.4	272.3	12.06	23.587	
2,800.0	2,764.6	2,796.8	2,784.7	8.9	6.4	147.15	51.6	223.3	295.9	283.3	12.55	23.567	
2,900.0	2,863.0	2,896.1	2,883.5	9.2	6.7	147.04	54.9	233.4	307.3	294.3	13.05	23.547	
3,000.0	2,961.5	2,995.5	2,982.2	9.6	6.9	146.93	58.2	243.6	318.8	305.2	13.55	23.529	
3,100.0	3,059.9	3,094.8	3,081.0	9.9	7.2	146.83	61.6	253.7	330.3	316.2	14.05	23.512	
3,200.0	3,158.3	3,194.1	3,179.8	10.3	7.4	146.73	64.9	263.8	341.7	327.2	14.54	23.495	
3,300.0	3,256.8	3,293.5	3,278.5	10.6	7.7	146.65	68.2	274.0	353.2	338.1	15.04	23.480	
3,400.0	3,355.2	3,392.8	3,377.3	11.0	7.9	146.57	71.6	284.1	364.7	349.1	15.54	23.465	
3,500.0	3,453.6	3,492.2	3,476.1	11.3	8.2	146.49	74.9	294.3	376.1	360.1	16.04	23.451	
3,600.0	3,552.1	3,591.5	3,574.8	11.7	8.4	146.42	78.2	304.4	387.6	371.1	16.54	23.438	
3,700.0	3,650.5	3,690.8	3,673.6	12.1	8.7	146.35	81.6	314.5	399.1	382.0	17.04	23.425	
3,800.0	3,748.9	3,790.2	3,772.4	12.4	9.0	146.28	84.9	324.7	410.5	393.0	17.54	23.413	
3,900.0	3,847.4	3,889.5	3,871.1	12.8	9.2	146.22	88.2	334.8	422.0	404.0	18.03	23.401	
4,000.0	3,945.8	3,988.8	3,969.9	13.1	9.5	146.17	91.6	344.9	433.5	415.0	18.53	23.390	
4,100.0	4,044.2	4,088.2	4,068.7	13.5	9.7	146.11	94.9	355.1	445.0	425.9	19.03	23.379	
4,200.0	4,142.7	4,187.5	4,167.4	13.8	10.0	146.06	98.2	365.2	456.4	436.9	19.53	23.369	
4,300.0	4,241.1	4,286.9	4,266.2	14.2	10.2	146.01	101.6	375.3	467.9	447.9	20.03	23.360	
4,400.0	4,339.5	4,386.2	4,364.9	14.5	10.5	145.96	104.9	385.5	479.4	458.9	20.53	23.350	
4,500.0	4,438.0	4,485.5	4,463.7	14.9	10.7	145.92	108.2	395.6	490.9	469.8	21.03	23.341	

# Anticollision Report

<b>Company:</b>	EnCana Oil & Gas (USA) Inc	<b>Local Co-ordinate Reference:</b>	Well McConahay 4D-34H-P266
<b>Project:</b>	DJ Wattenberg	<b>TVD Reference:</b>	WELL @ 5091.0ft (Original Well Elev)
<b>Reference Site:</b>	S34-T2N-R66W (McConahay)	<b>MD Reference:</b>	WELL @ 5091.0ft (Original Well Elev)
<b>Site Error:</b>	0.0ft	<b>North Reference:</b>	True
<b>Reference Well:</b>	McConahay 4D-34H-P266	<b>Survey Calculation Method:</b>	Minimum Curvature
<b>Well Error:</b>	0.0ft	<b>Output errors are at</b>	2.00 sigma
<b>Reference Wellbore</b>	Hz	<b>Database:</b>	USA EDM 5000 Multi Users DB
<b>Reference Design:</b>	Plan #1	<b>Offset TVD Reference:</b>	Offset Datum

Offset Design S34-T2N-R66W (McConahay) - McConahay 4C-34H-P266 - Hz - Plan #2													Offset Site Error:	0.0 ft
Survey Program: 0-Geolink MWD													Offset Well Error:	0.0 ft
Reference		Offset		Semi Major Axis		Highside Toolface (°)	Distance		Total Uncertainty Axis	Separation Factor	Warning			
Measured Depth (ft)	Vertical Depth (ft)	Measured Depth (ft)	Vertical Depth (ft)	Reference (ft)	Offset (ft)		Offset Wellbore Centre +N/-S (ft)	+E/-W (ft)						
0.0	0.0	10.0	10.0	0.0	0.0	-180.00	-29.1	0.0	29.1					
100.0	100.0	110.0	110.0	0.2	0.1	-180.00	-29.1	0.0	29.1	28.8	0.30	97.091		
200.0	200.0	210.0	210.0	0.3	0.3	-180.00	-29.1	0.0	29.1	28.5	0.65	44.892 CC, ES		
300.0	300.0	310.0	310.0	0.5	0.5	148.84	-29.1	0.0	30.6	29.6	1.00	30.656		
400.0	399.8	409.8	409.8	0.7	0.7	153.19	-29.1	0.0	35.2	33.9	1.35	26.067		
500.0	499.5	509.4	509.4	0.9	0.8	156.98	-29.4	1.0	43.3	41.6	1.70	25.397 SF		
600.0	598.7	608.6	608.5	1.2	1.0	159.00	-30.2	3.6	54.9	52.8	2.06	26.603		
700.0	697.5	707.4	707.2	1.5	1.2	159.82	-31.5	7.9	69.9	67.4	2.43	28.733		
800.0	795.9	805.8	805.5	1.8	1.4	159.73	-33.3	13.7	86.9	84.0	2.82	30.801		
900.0	894.3	904.2	903.6	2.2	1.6	158.73	-35.6	21.2	104.0	100.7	3.23	32.183		
1,000.0	992.8	1,002.5	1,001.4	2.5	1.8	157.23	-38.3	30.3	121.3	117.6	3.67	33.079		
1,100.0	1,091.2	1,100.9	1,099.3	2.9	2.0	155.86	-41.2	39.9	138.7	134.6	4.12	33.712		
1,200.0	1,189.6	1,199.3	1,197.2	3.2	2.3	154.79	-44.1	49.5	156.2	151.7	4.57	34.181		
1,300.0	1,288.1	1,297.8	1,295.1	3.6	2.5	153.94	-47.1	59.1	173.8	168.8	5.03	34.539		
1,400.0	1,386.5	1,396.2	1,393.0	3.9	2.7	153.25	-50.0	68.7	191.4	185.9	5.50	34.819		
1,500.0	1,484.9	1,494.6	1,490.9	4.3	3.0	152.67	-52.9	78.3	209.0	203.0	5.96	35.042		
1,600.0	1,583.4	1,593.0	1,588.8	4.6	3.2	152.18	-55.8	87.9	226.6	220.2	6.43	35.224		
1,700.0	1,681.8	1,691.4	1,686.7	5.0	3.5	151.77	-58.7	97.5	244.2	237.3	6.90	35.374		
1,800.0	1,780.2	1,789.8	1,784.6	5.3	3.7	151.41	-61.6	107.1	261.9	254.5	7.38	35.499		
1,900.0	1,878.7	1,888.3	1,882.5	5.7	3.9	151.09	-64.5	116.7	279.5	271.7	7.85	35.605		
2,000.0	1,977.1	1,986.7	1,980.4	6.0	4.2	150.81	-67.4	126.3	297.2	288.9	8.33	35.696		
2,100.0	2,075.5	2,085.1	2,078.4	6.4	4.4	150.57	-70.4	135.9	314.9	306.1	8.80	35.775		
2,200.0	2,174.0	2,183.5	2,176.3	6.7	4.7	150.35	-73.3	145.5	332.6	323.3	9.28	35.844		
2,300.0	2,272.4	2,281.9	2,274.2	7.1	4.9	150.15	-76.2	155.1	350.2	340.5	9.75	35.904		
2,400.0	2,370.8	2,380.4	2,372.1	7.4	5.2	149.97	-79.1	164.7	367.9	357.7	10.23	35.957		
2,500.0	2,469.3	2,478.8	2,470.0	7.8	5.4	149.81	-82.0	174.3	385.6	374.9	10.71	36.005		
2,600.0	2,567.7	2,577.2	2,567.9	8.2	5.6	149.66	-84.9	183.9	403.3	392.1	11.19	36.047		
2,700.0	2,666.2	2,675.6	2,665.8	8.5	5.9	149.52	-87.8	193.5	421.0	409.3	11.67	36.085		
2,800.0	2,764.6	2,774.0	2,763.7	8.9	6.1	149.40	-90.7	203.1	438.7	426.5	12.14	36.120		
2,900.0	2,863.0	2,872.4	2,861.6	9.2	6.4	149.28	-93.7	212.7	456.4	443.7	12.62	36.151		
3,000.0	2,961.5	2,970.9	2,959.5	9.6	6.6	149.18	-96.6	222.3	474.1	461.0	13.10	36.180		
3,100.0	3,059.9	3,069.3	3,057.4	9.9	6.9	149.08	-99.5	231.9	491.8	478.2	13.58	36.206		

# Anticollision Report

<b>Company:</b>	EnCana Oil & Gas (USA) Inc	<b>Local Co-ordinate Reference:</b>	Well McConahay 4D-34H-P266
<b>Project:</b>	DJ Wattenberg	<b>TVD Reference:</b>	WELL @ 5091.0ft (Original Well Elev)
<b>Reference Site:</b>	S34-T2N-R66W (McConahay)	<b>MD Reference:</b>	WELL @ 5091.0ft (Original Well Elev)
<b>Site Error:</b>	0.0ft	<b>North Reference:</b>	True
<b>Reference Well:</b>	McConahay 4D-34H-P266	<b>Survey Calculation Method:</b>	Minimum Curvature
<b>Well Error:</b>	0.0ft	<b>Output errors are at</b>	2.00 sigma
<b>Reference Wellbore</b>	Hz	<b>Database:</b>	USA EDM 5000 Multi Users DB
<b>Reference Design:</b>	Plan #1	<b>Offset TVD Reference:</b>	Offset Datum

Offset Design S34-T2N-R66W (McConahay) - RANCHERO 1 (EXISTING) - ENCANA WELL - NO SURVEYS													Offset Site Error:	0.0 ft
Survey Program: 8084-Geolink MWD													Offset Well Error:	0.0 ft
Reference		Offset		Semi Major Axis		Distance		Total		Separation		Warning		
Measured Depth (ft)	Vertical Depth (ft)	Measured Depth (ft)	Vertical Depth (ft)	Reference (ft)	Offset (ft)	Highside Toolface (°)	Offset Wellbore Centre +N/-S (ft)	+E/-W (ft)	Between Centres (ft)	Between Ellipses (ft)	Uncertainty Axis	Factor		
11,000.0	7,315.0	7,234.0	7,234.0	88.6	12.6	-90.00	923.7	-3,670.7	467.2	367.0	100.16	4.664		
11,100.0	7,315.0	7,234.0	7,234.0	91.0	12.6	-90.00	923.7	-3,670.7	370.6	268.0	102.61	3.612		
11,200.0	7,315.0	7,234.0	7,234.0	93.5	12.6	-90.00	923.7	-3,670.7	276.4	171.4	105.05	2.631		
11,300.0	7,315.0	7,234.0	7,234.0	95.9	12.6	-90.00	923.7	-3,670.7	188.4	80.9	107.50	1.752		
11,400.0	7,315.0	7,234.0	7,234.0	98.3	12.6	-90.00	923.7	-3,670.7	120.6	10.7	109.94	1.097 Level 2		
11,454.6	7,315.0	7,234.0	7,234.0	99.6	12.6	-90.00	923.7	-3,670.7	107.5	-3.7	111.28	0.966 Level 1, CC, ES, SF		
11,500.0	7,315.0	7,234.0	7,234.0	100.7	12.6	-90.00	923.7	-3,670.7	116.7	4.3	112.39	1.039 Level 2		
11,600.0	7,315.0	7,234.0	7,234.0	103.2	12.6	-90.00	923.7	-3,670.7	180.8	66.0	114.84	1.575		
11,700.0	7,315.0	7,234.0	7,234.0	105.6	12.6	-90.00	923.7	-3,670.7	267.9	150.6	117.30	2.284		
11,800.0	7,315.0	7,234.0	7,234.0	108.0	12.6	-90.00	923.7	-3,670.7	361.7	242.0	119.75	3.021		
11,900.0	7,315.0	7,234.0	7,234.0	110.5	12.6	-90.00	923.7	-3,670.7	458.2	336.0	122.20	3.749		

## Anticollision Report

<b>Company:</b>	EnCana Oil & Gas (USA) Inc	<b>Local Co-ordinate Reference:</b>	Well McConahay 4D-34H-P266
<b>Project:</b>	DJ Wattenberg	<b>TVD Reference:</b>	WELL @ 5091.0ft (Original Well Elev)
<b>Reference Site:</b>	S34-T2N-R66W (McConahay)	<b>MD Reference:</b>	WELL @ 5091.0ft (Original Well Elev)
<b>Site Error:</b>	0.0ft	<b>North Reference:</b>	True
<b>Reference Well:</b>	McConahay 4D-34H-P266	<b>Survey Calculation Method:</b>	Minimum Curvature
<b>Well Error:</b>	0.0ft	<b>Output errors are at</b>	2.00 sigma
<b>Reference Wellbore</b>	Hz	<b>Database:</b>	USA EDM 5000 Multi Users DB
<b>Reference Design:</b>	Plan #1	<b>Offset TVD Reference:</b>	Offset Datum

Reference Depths are relative to WELL @ 5091.0ft (Original Well Elev)  
Offset Depths are relative to Offset Datum  
Central Meridian is -105.500000 °

Coordinates are relative to: McConahay 4D-34H-P266  
Coordinate System is US State Plane 1983, Colorado Northern Zone  
Grid Convergence at Surface is: 0.48°

