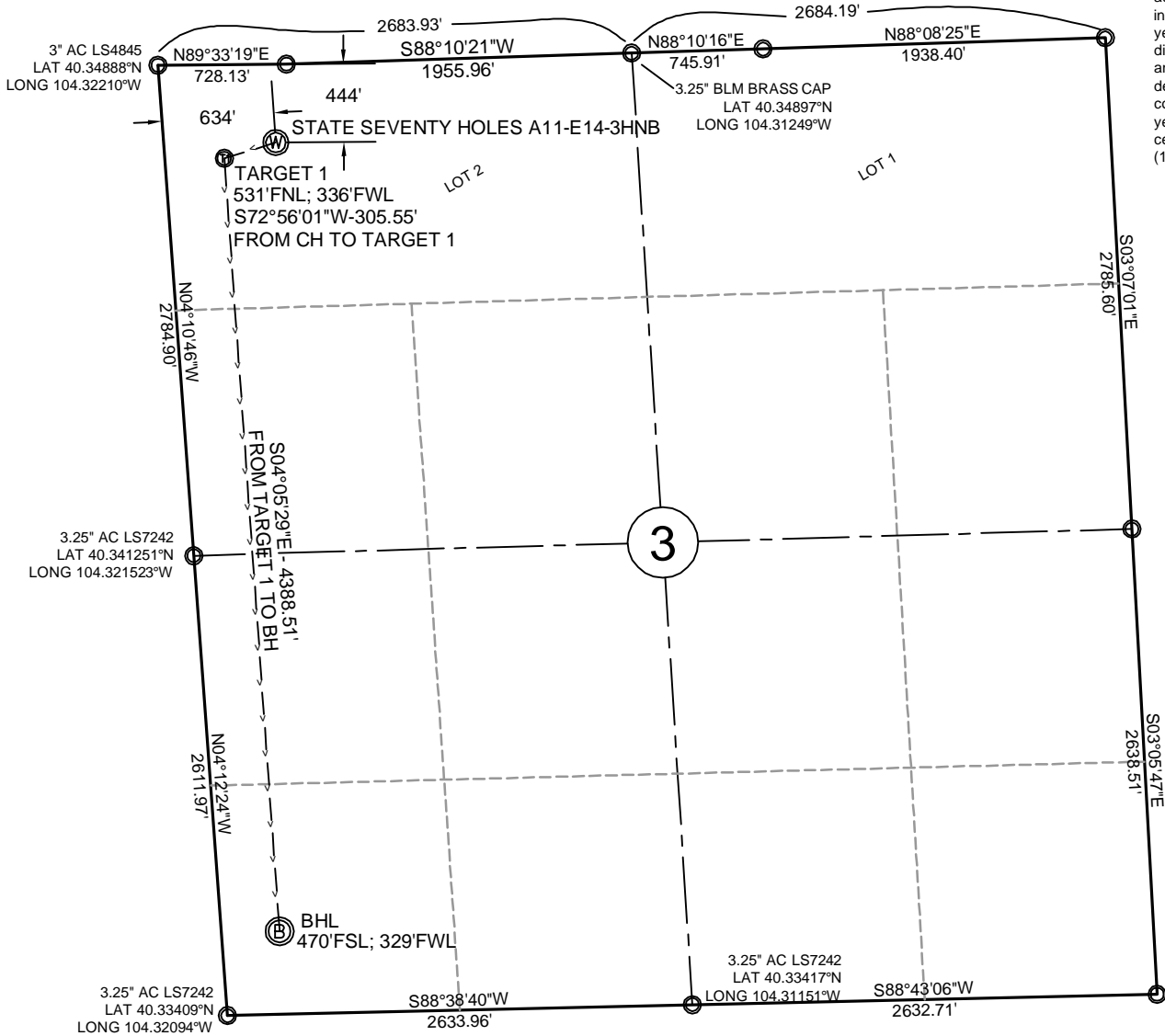


T4N, R62W, 6th PM

NOTE: Under Colorado law, you must commence any legal action based upon any defect in this certificate within three years after defect is discovered. In no event, may any action based upon any defect in this survey be commenced more than ten years after date of this certificate shown hereon. (13-80105 C.R.S.)



NOTES:

- All bearings are GRID based upon the Colorado State Plane Coordinate System, North Zone, NAD83(2011) derived from post-processed static GPS observations.
- Distances are at GROUND
- Vertical Datum is NAVD88 based upon GPS observations
- PDOP value equals 1.6.
- GPS operator: Dave Fehringer.
- Undisturbed ground elevation at wellhead = 4533.7'

CERTIFICATE OF SURVEYOR

I, David A. Fehringer of Lander, Wyoming hereby certify that this well location certificate was prepared from notes taken during an actual survey on SEPTEMBER 29, 2013, and that it correctly shows the drilling location of BONANZA CREEK ENERGY, INC., STATE SEVENTY HOLES A11-E14-3HNB as staked during said survey. This map does not represent a boundary survey or an improvement location plat and should not be used for the establishment of boundary lines.

SURFACE LOCATION: (NAD83)

GEODETIC COORDINATES
LAT 40.347655°
LONG 104.319745°

STATE PLANE (CO-N NAD83)

N=1,371,681 ft
E=3,328,958 ft

TARGET #1: (NAD83)

GEODETIC COORDINATES
LAT 40.347419°
LONG 104.320797°

STATE PLANE (CO-N NAD83)

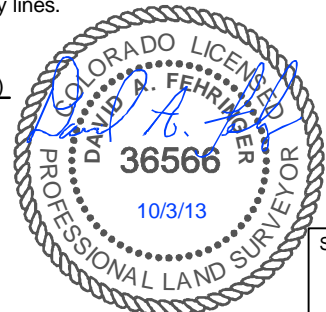
N=1,371,591 ft
E=3,328,665 ft

BOTTOM HOLE LOCATION: (NAD83)

GEODETIC COORDINATES
LAT 40.335393°
LONG 104.319883°

STATE PLANE (CO-N NAD83)

N=1,367,214 ft
E=3,328,978 ft

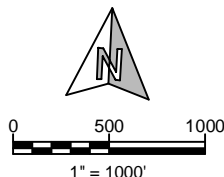


SHEET NO:

1 of 1

Fremont
ENGINEERING & SURVEYING
64 COAL MINE RD.
LANDER, WY 82520
307-349-0840
fes@wyoming.com

Drawn By: DAF
Checked By: DAF
Date: 10/3/12
Revision: #2
Date: 10/16/12
Explanation: Add
ground elevations to
well certification



WELL LOCATION CERTIFICATE

STATE SEVENTY
HOLES A11-E14-3HNB
444'FNL, 634'FWL
NW¼NW¼, SECTION 3,
T.4N., R.62W., 6th PM
WELD COUNTY, COLORADO

BONANZA CREEK
410 17th Street
Denver, CO 80202
(720) 440-6100