



Encana Oil & Gas

135405

5":100' - MD

9/25/2013 1:09:20 AM

Oper. Company: Cathedral Energy

Country: USA

State / Province: CO.

County / Parish: Weld

Started:

API/UWI:

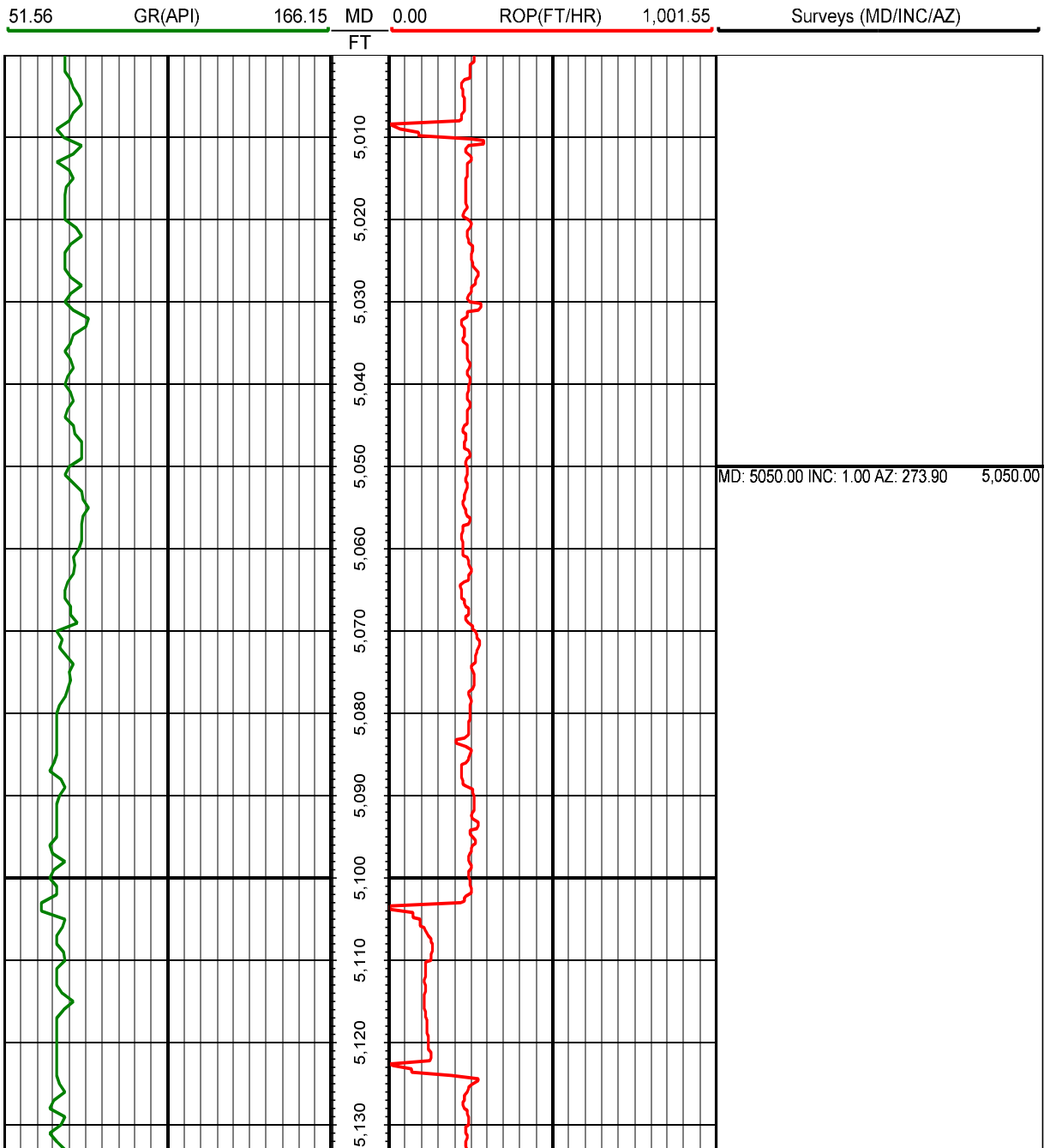
Field: Wattenburg

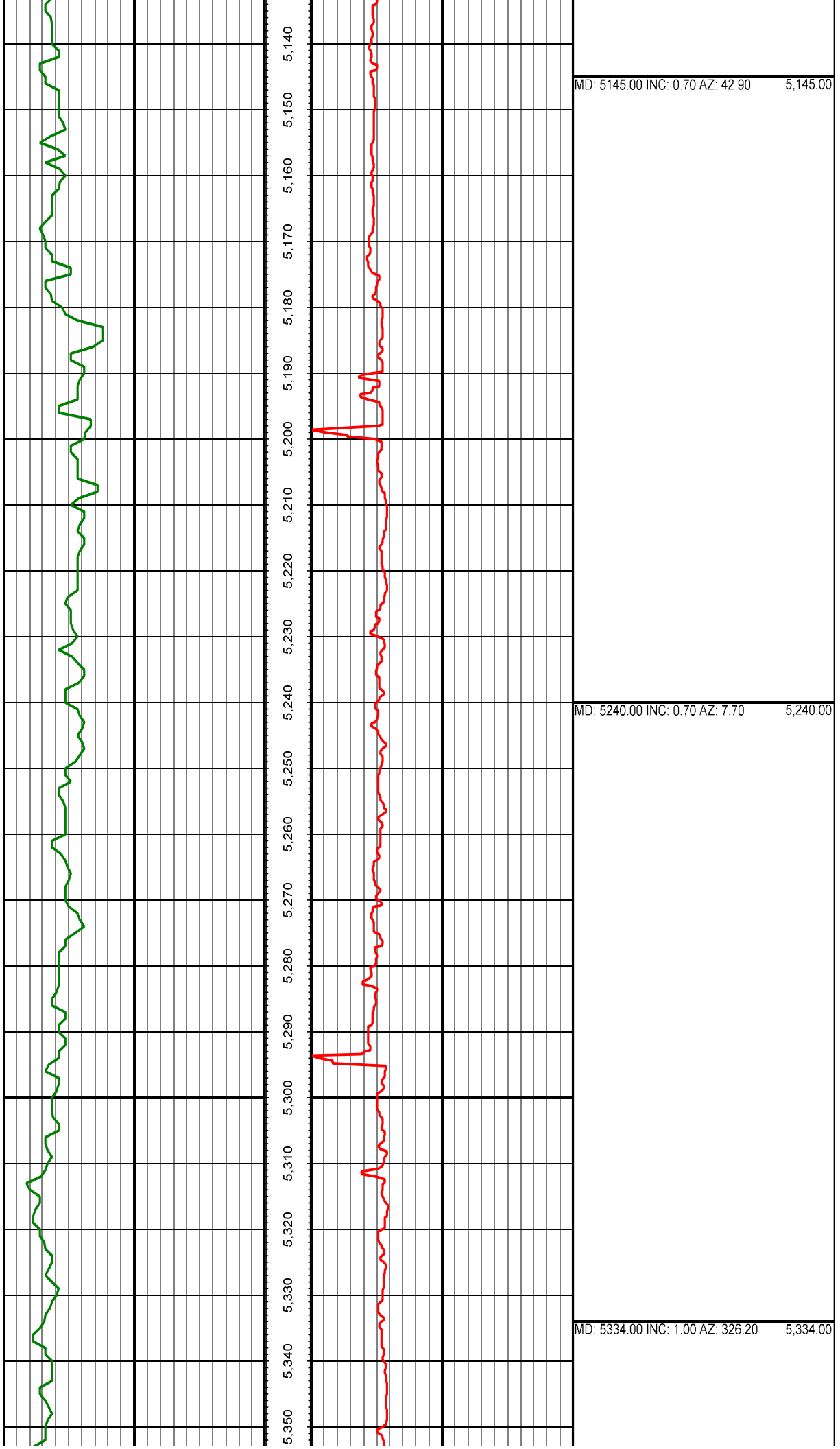
Well: Qualls 3F-28H

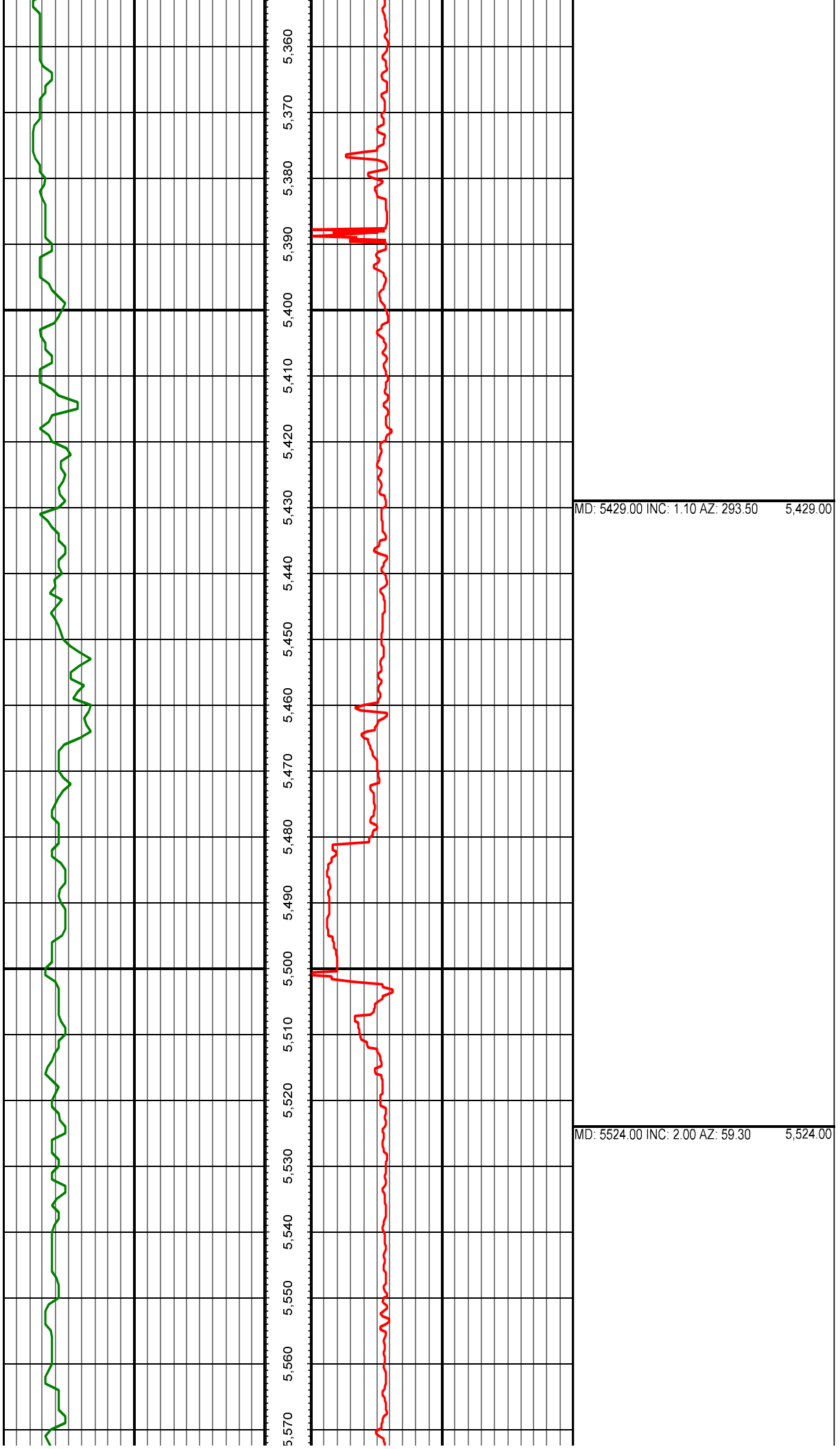
Rig: H&P 278

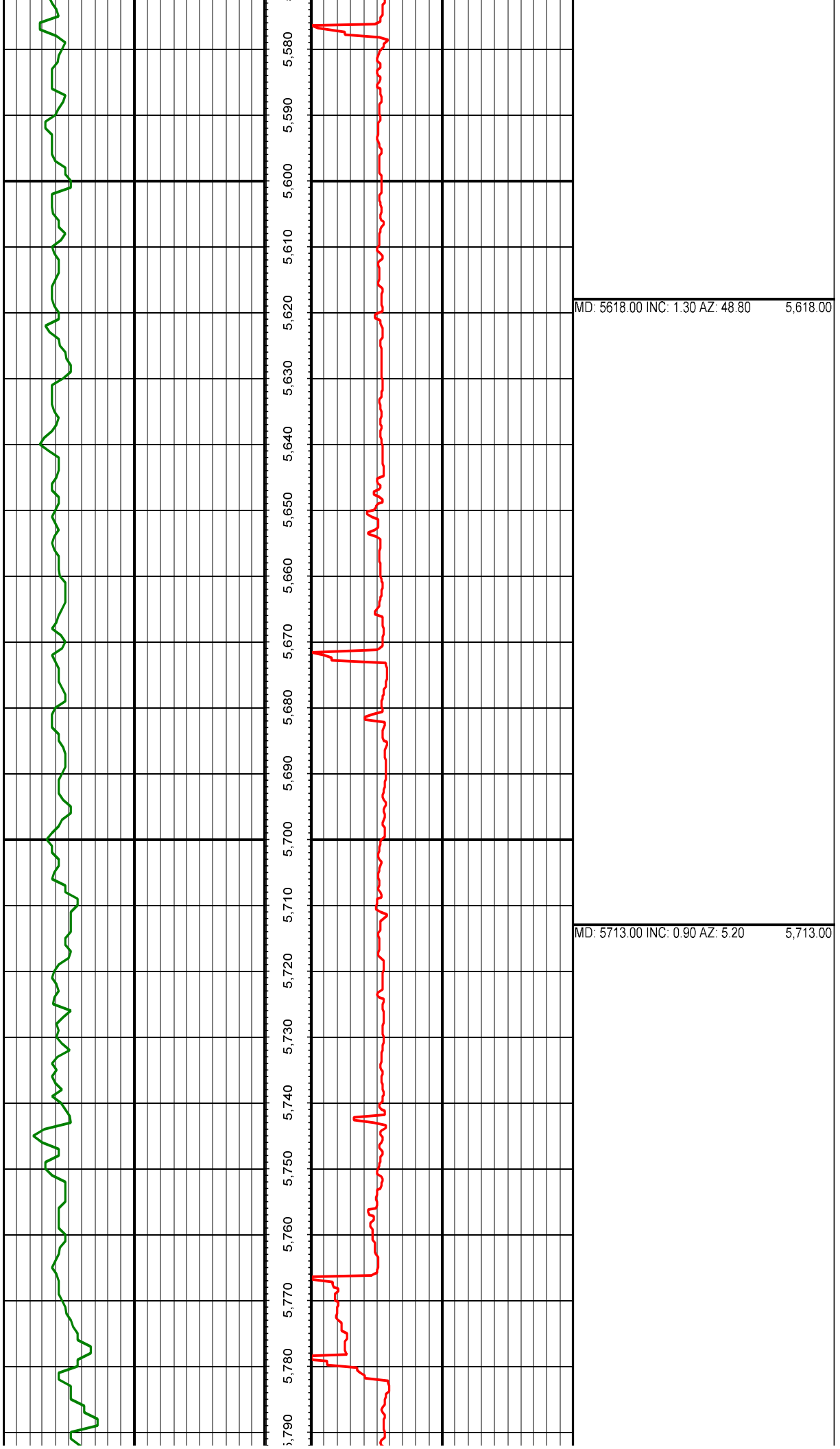
Ended:

*All interpretations are opinions based on inferences from electrical or other measurements and we cannot and do not guarantee the accuracy or correctness of any interpretation, and we shall not except in the case of gross or willful negligence on our part, be liable or responsible for any loss, cost damages or expenses incurred or sustained by anyone resulting from an interpretation made by any of our officers, agents, or employees.*

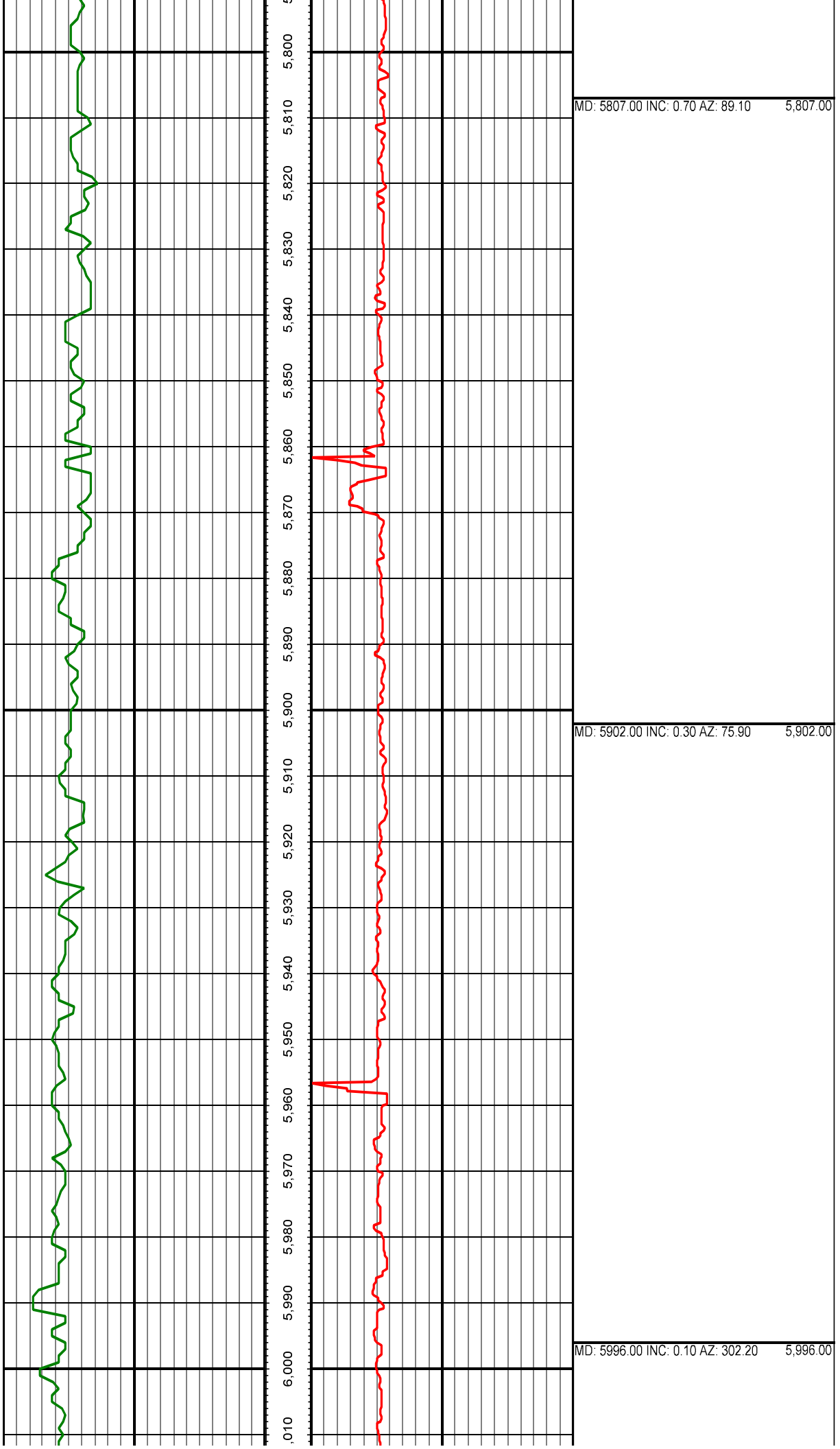


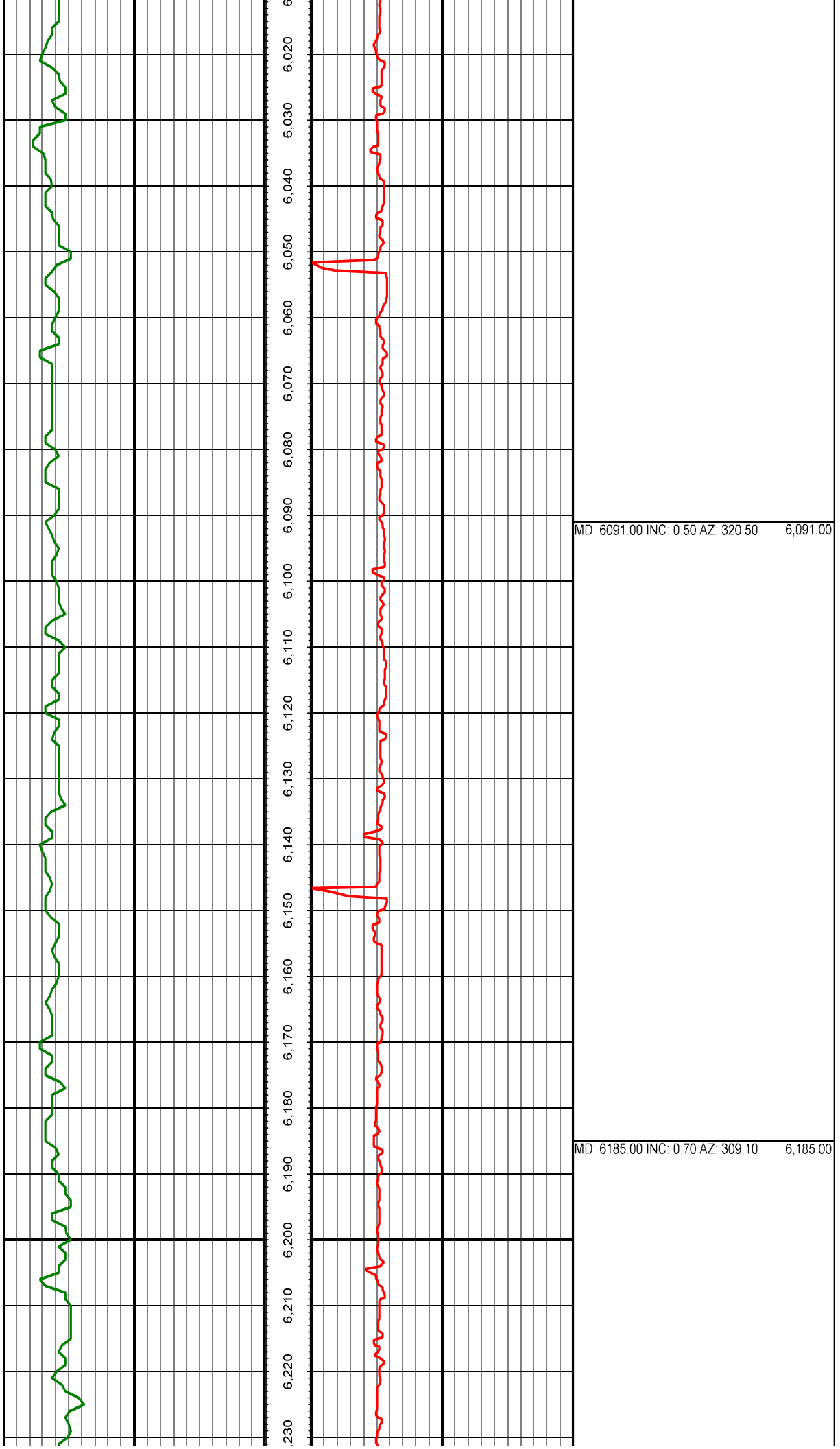


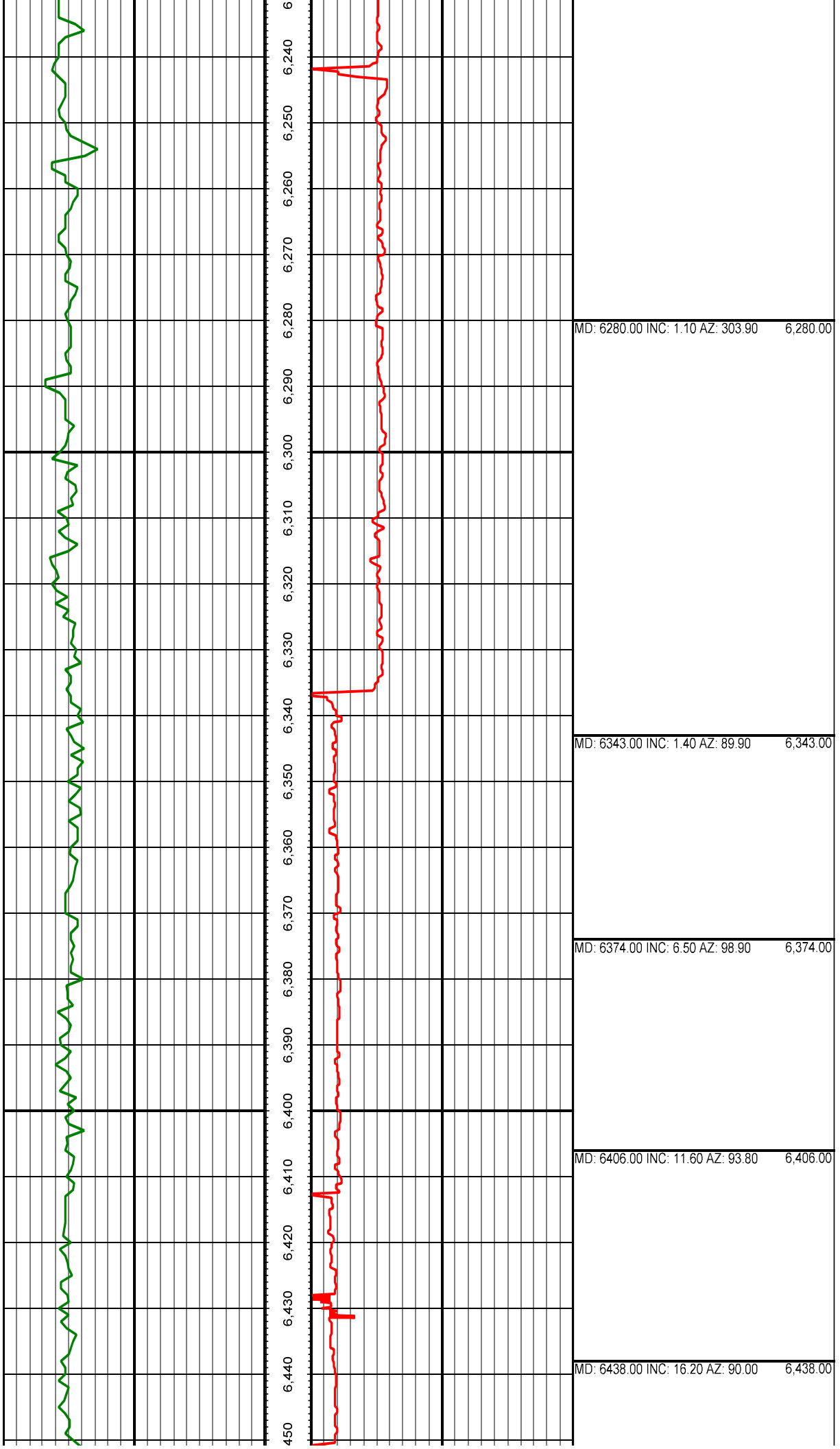


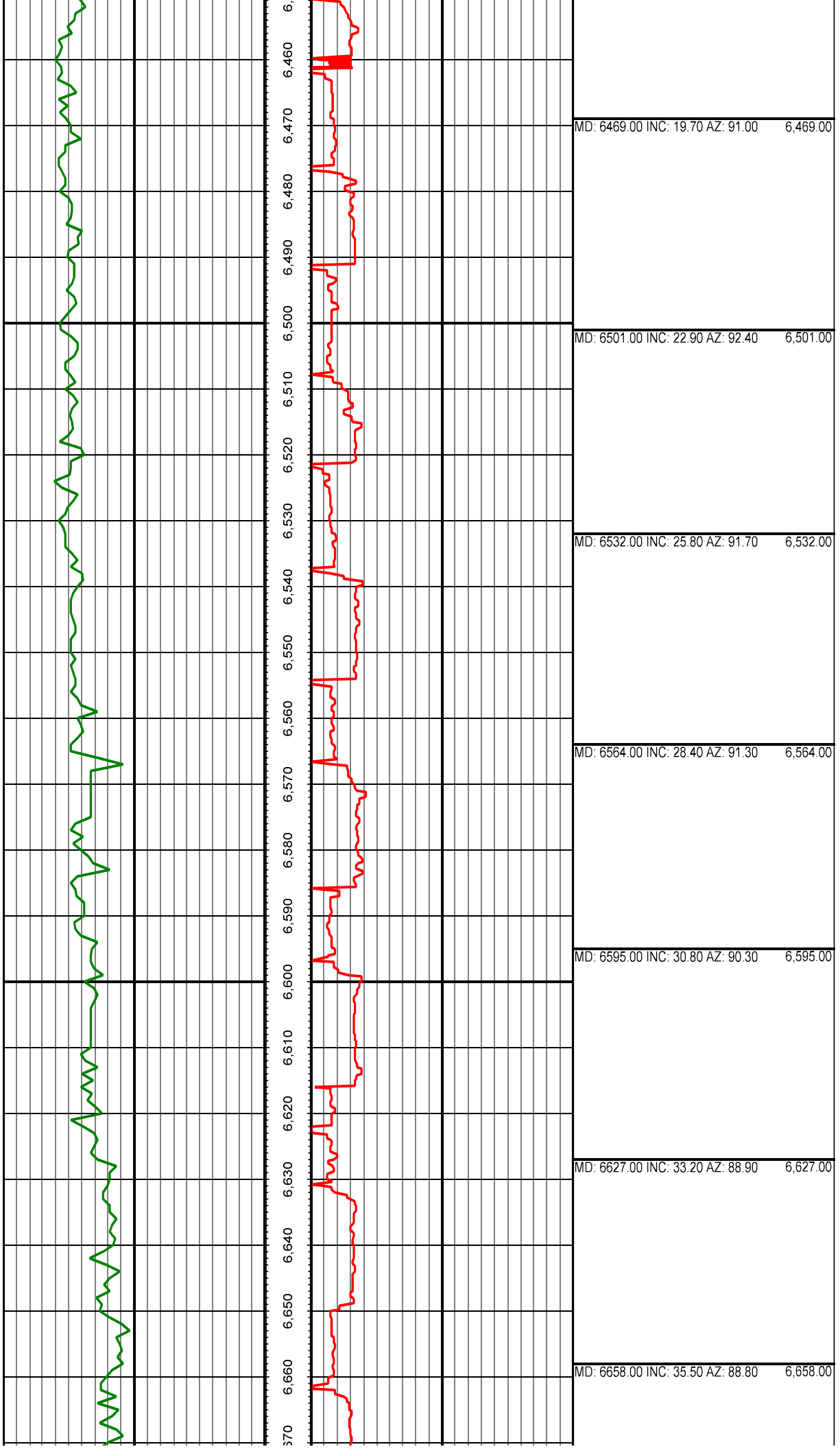


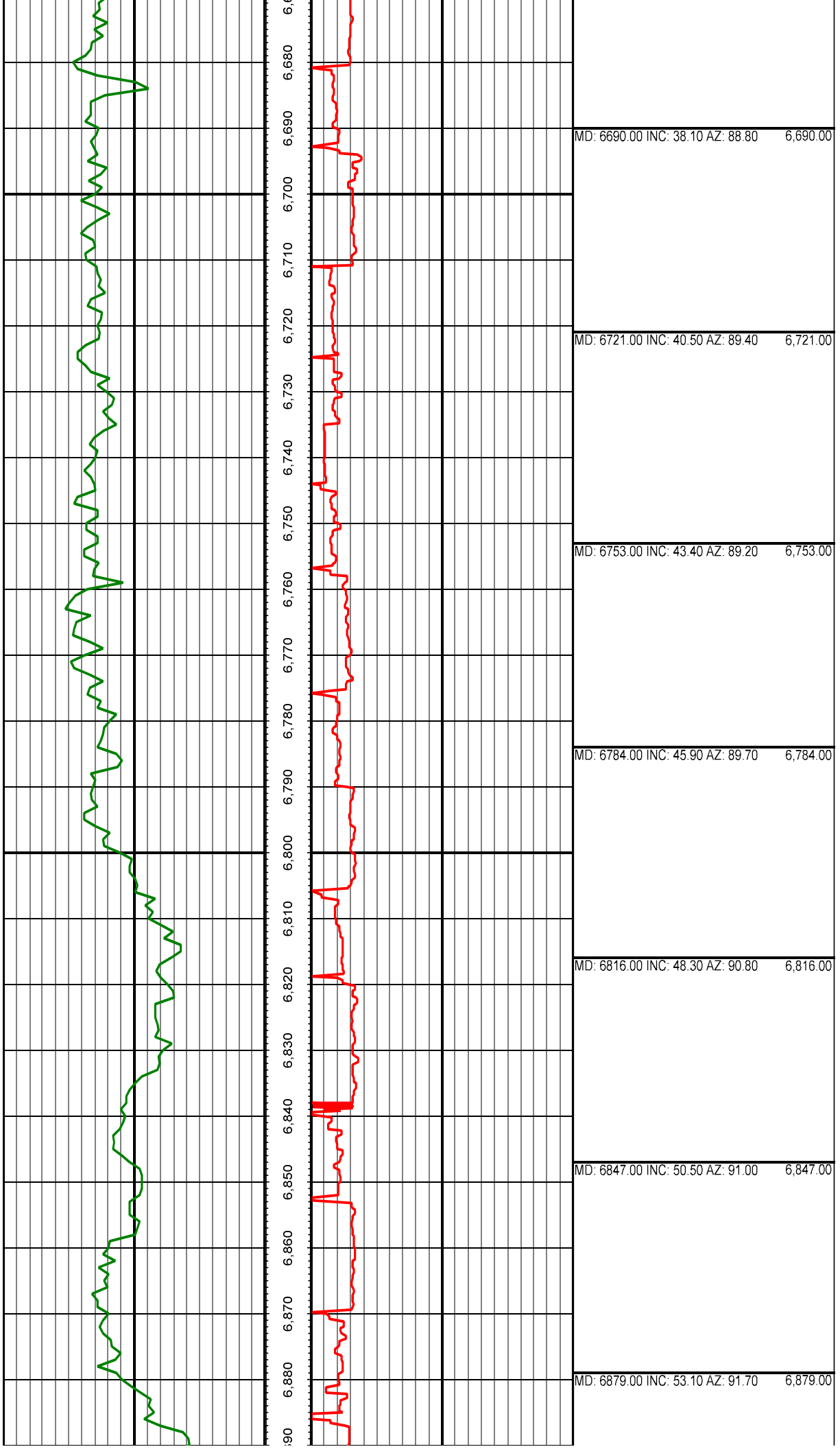


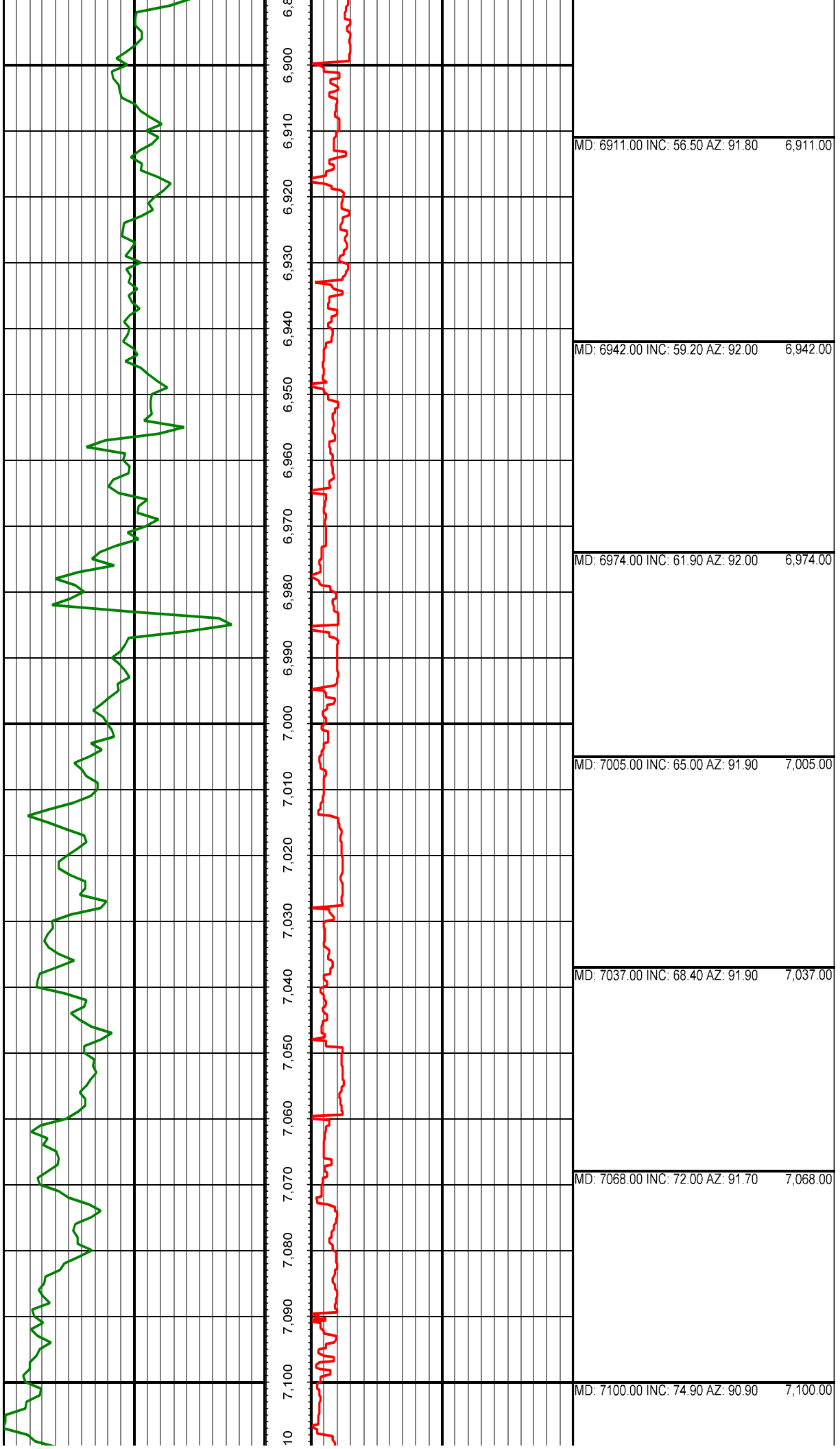


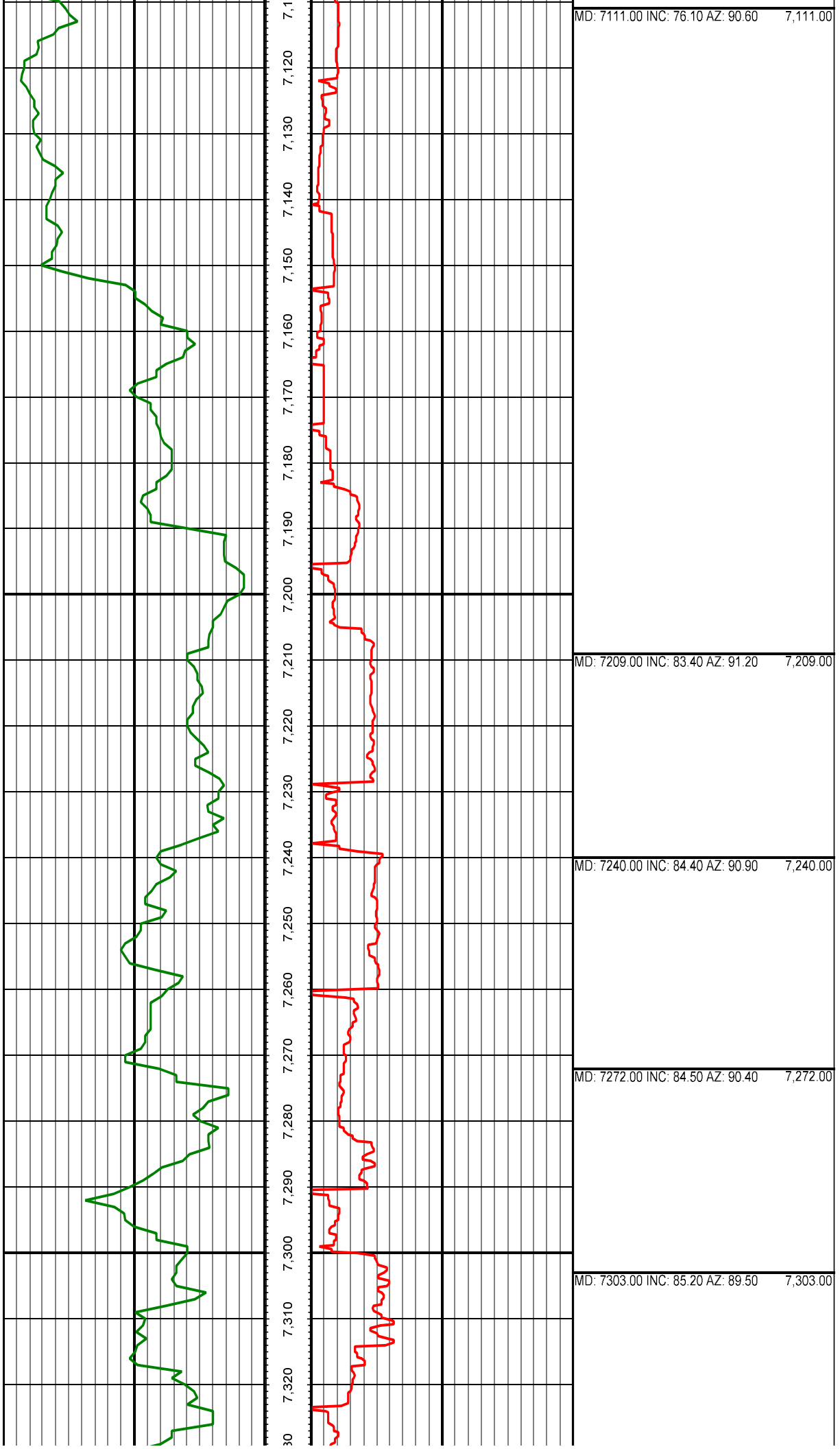


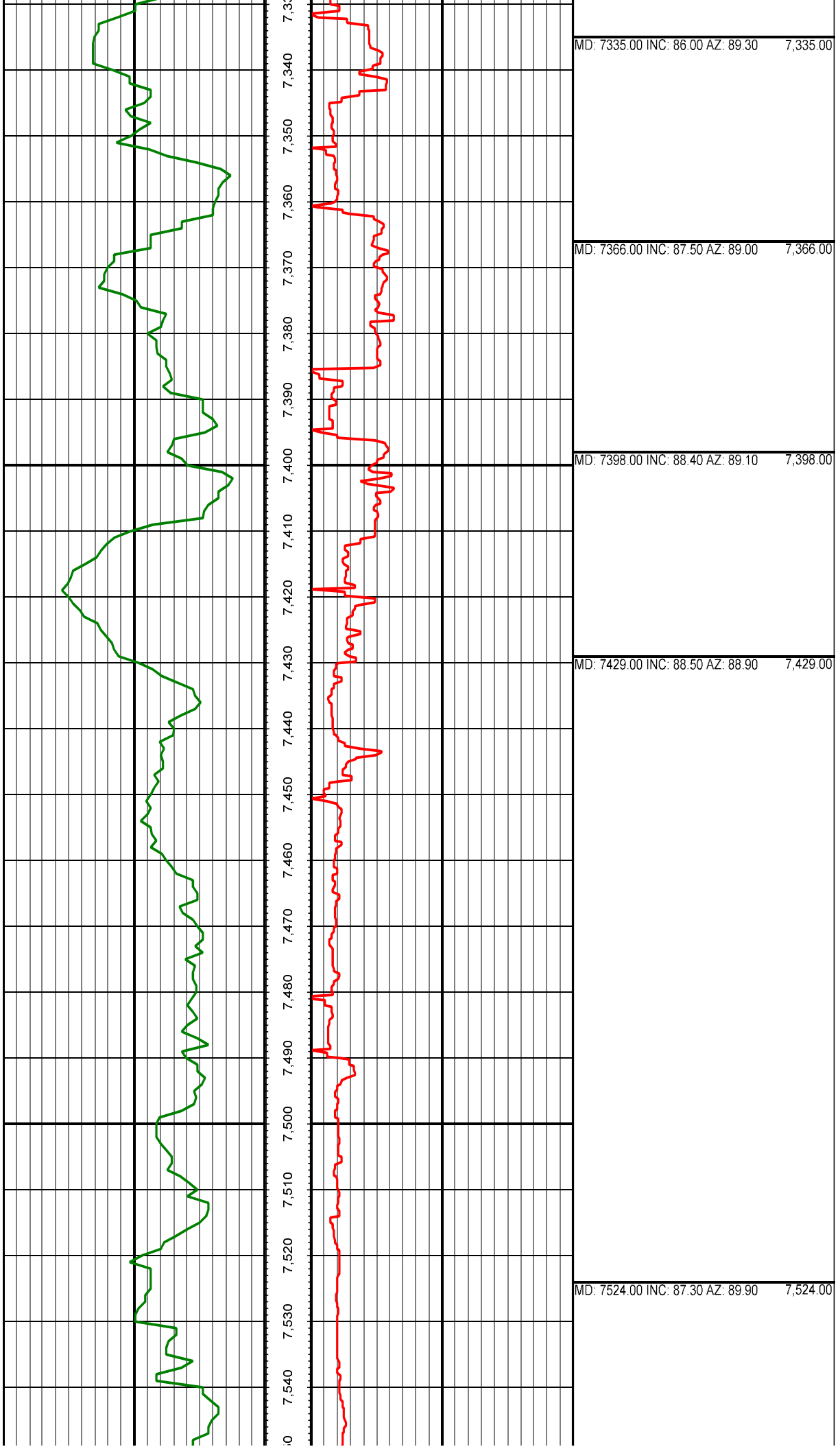




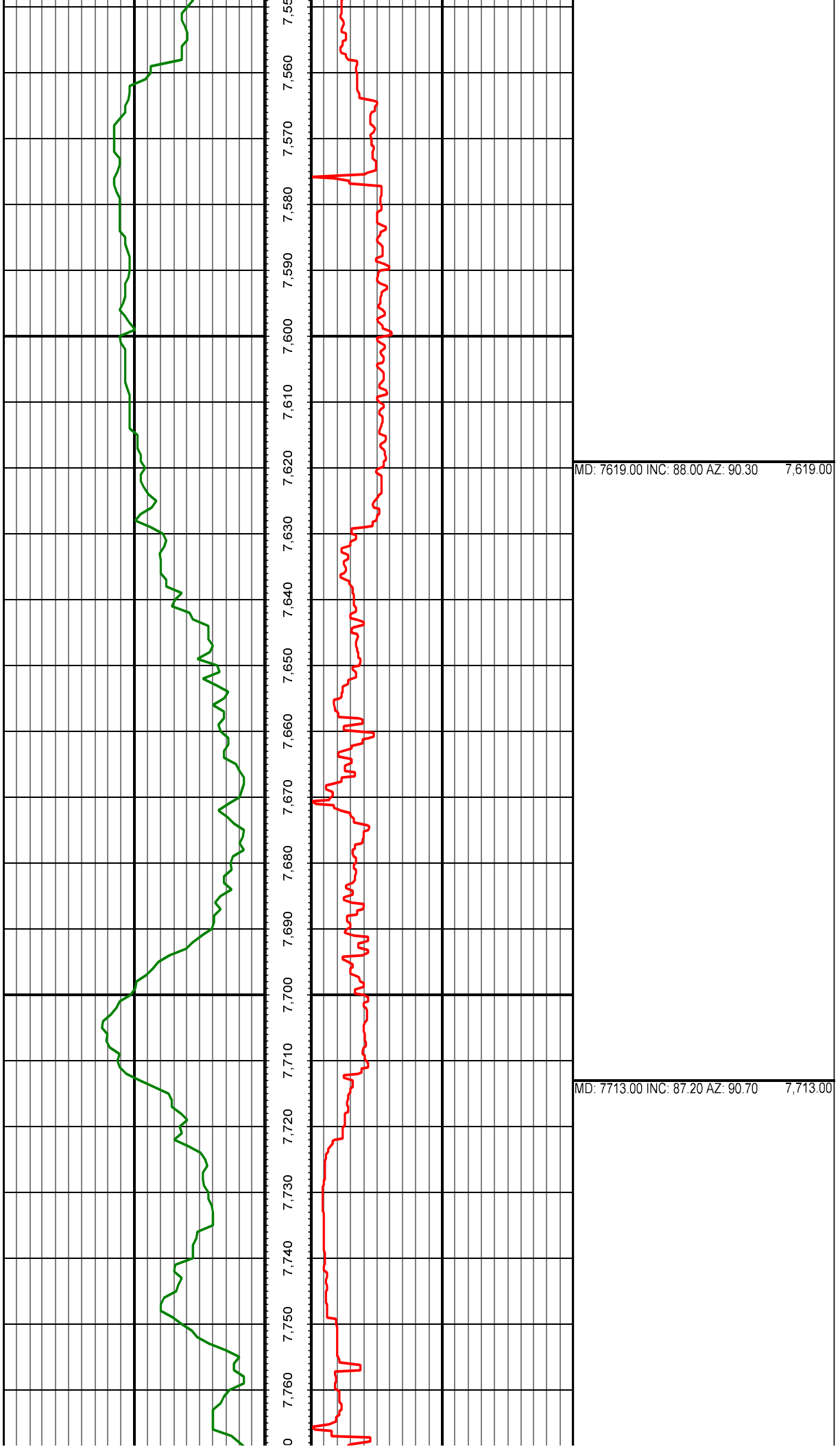


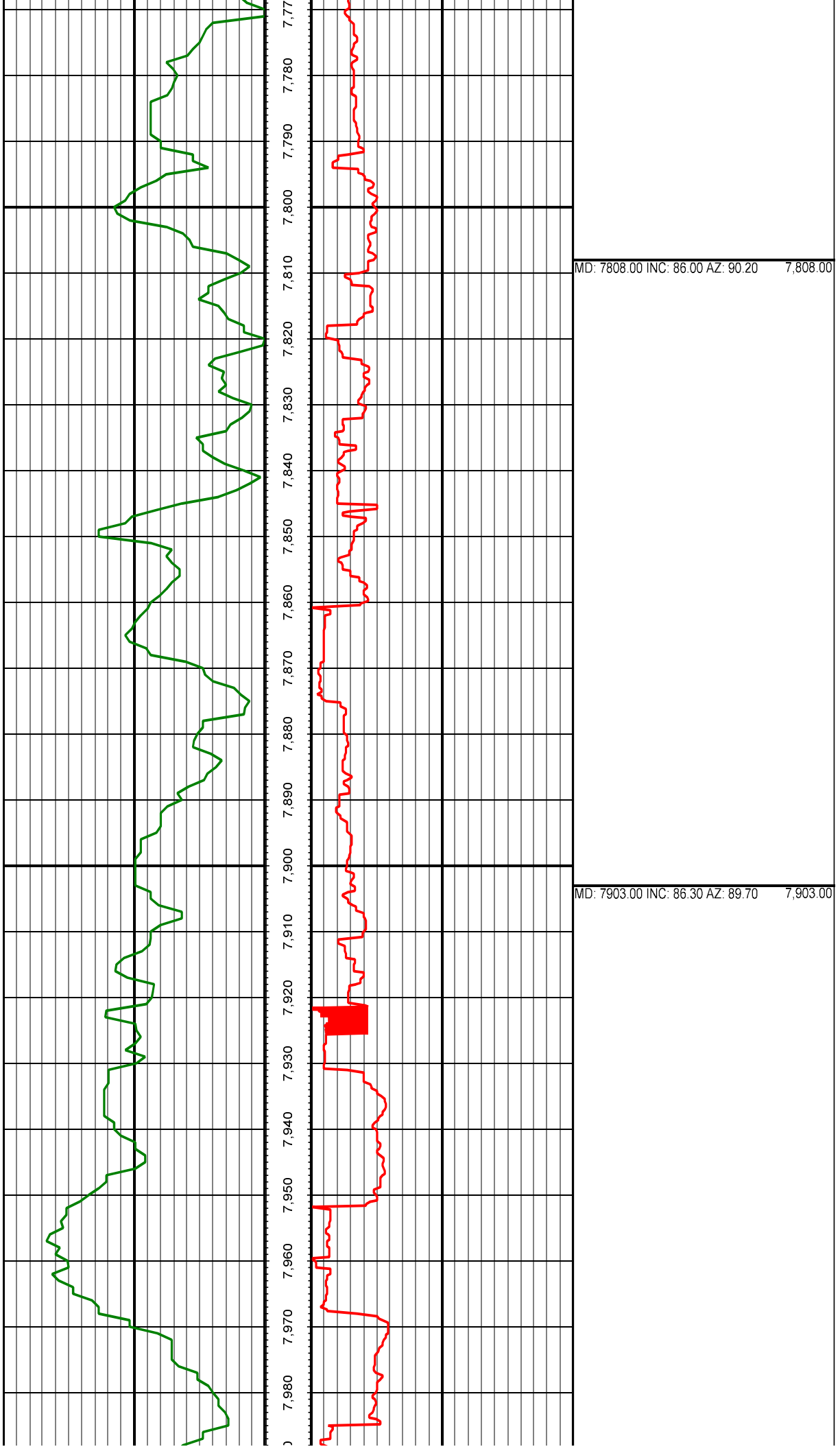


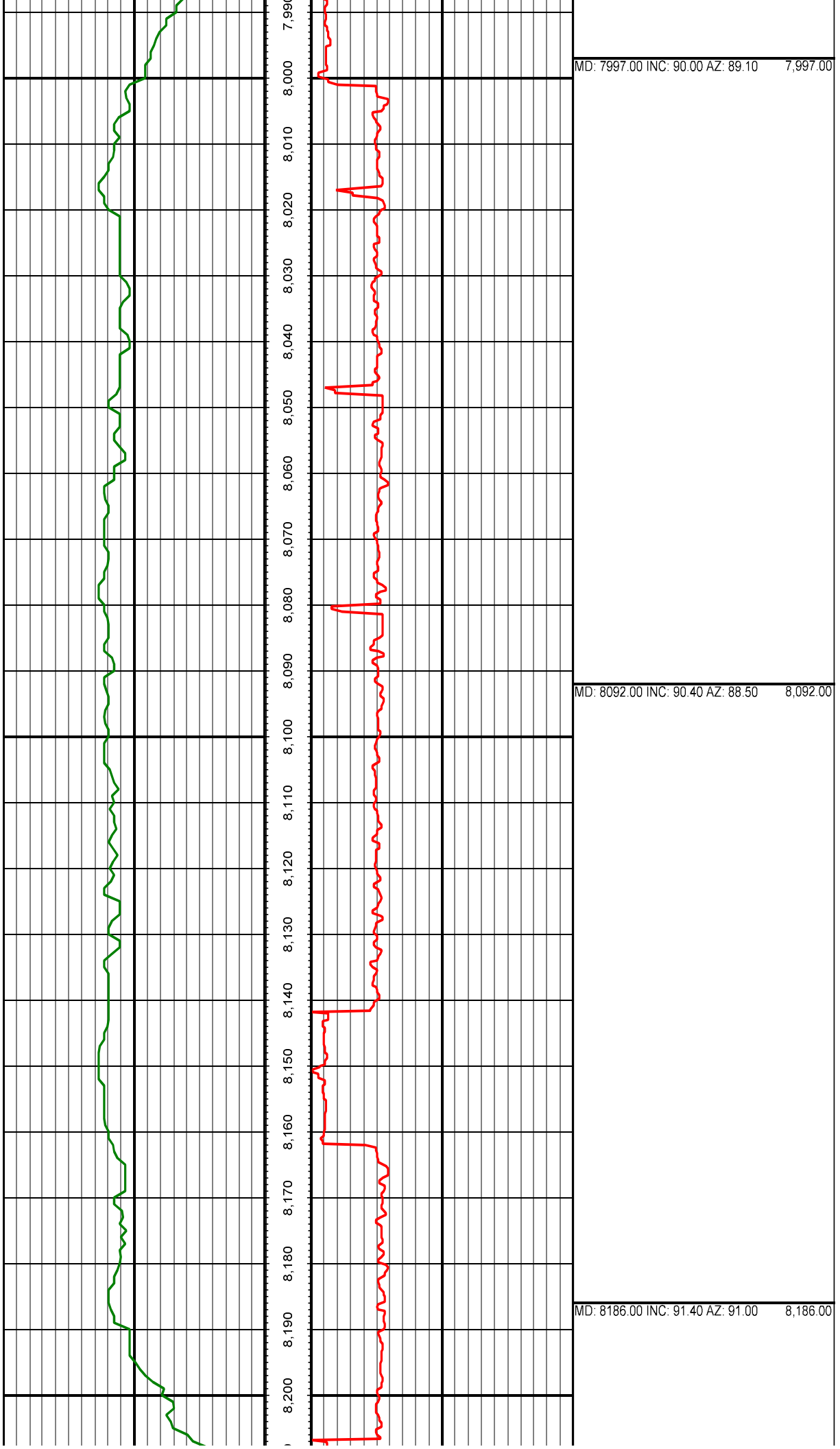


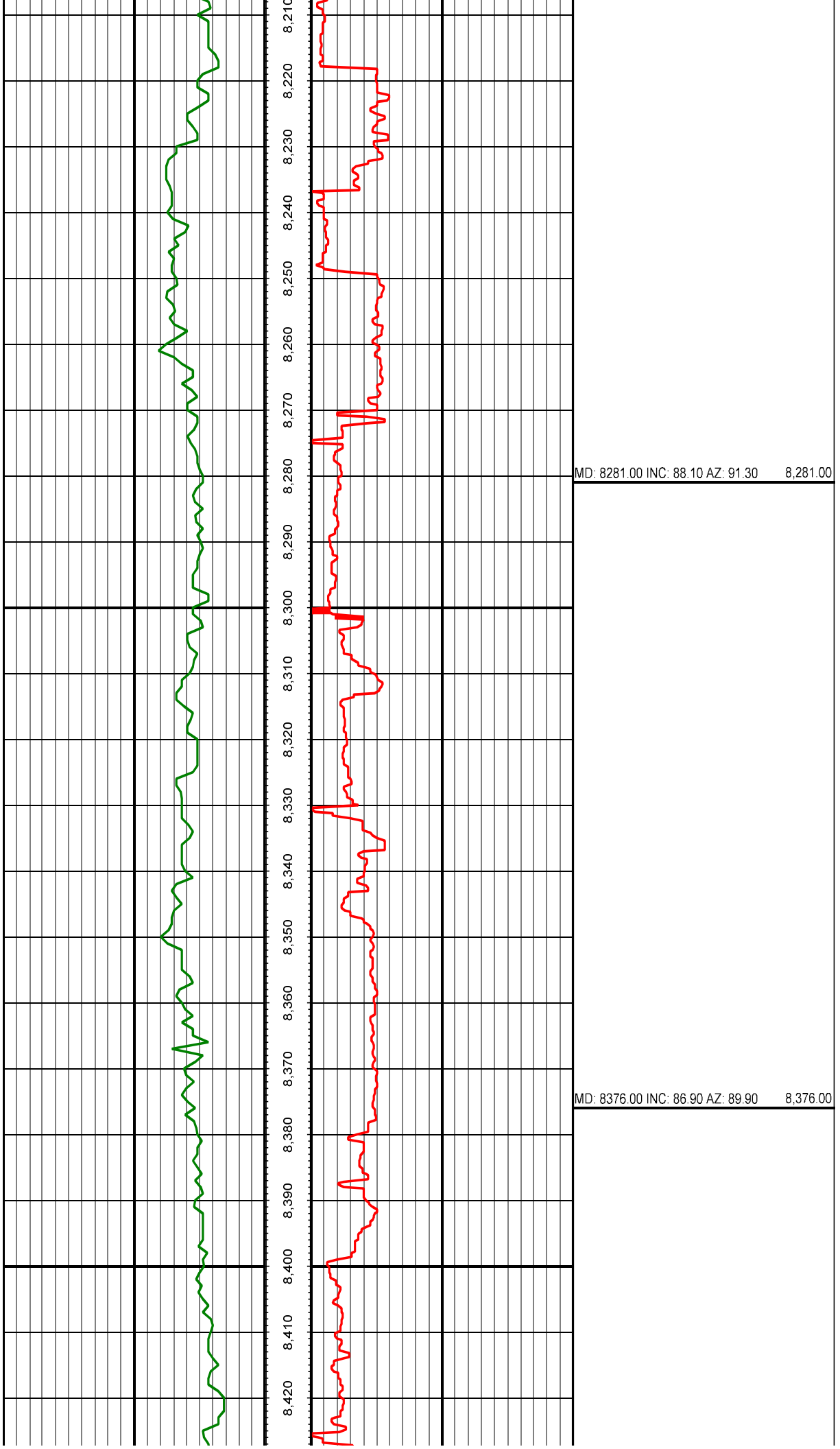


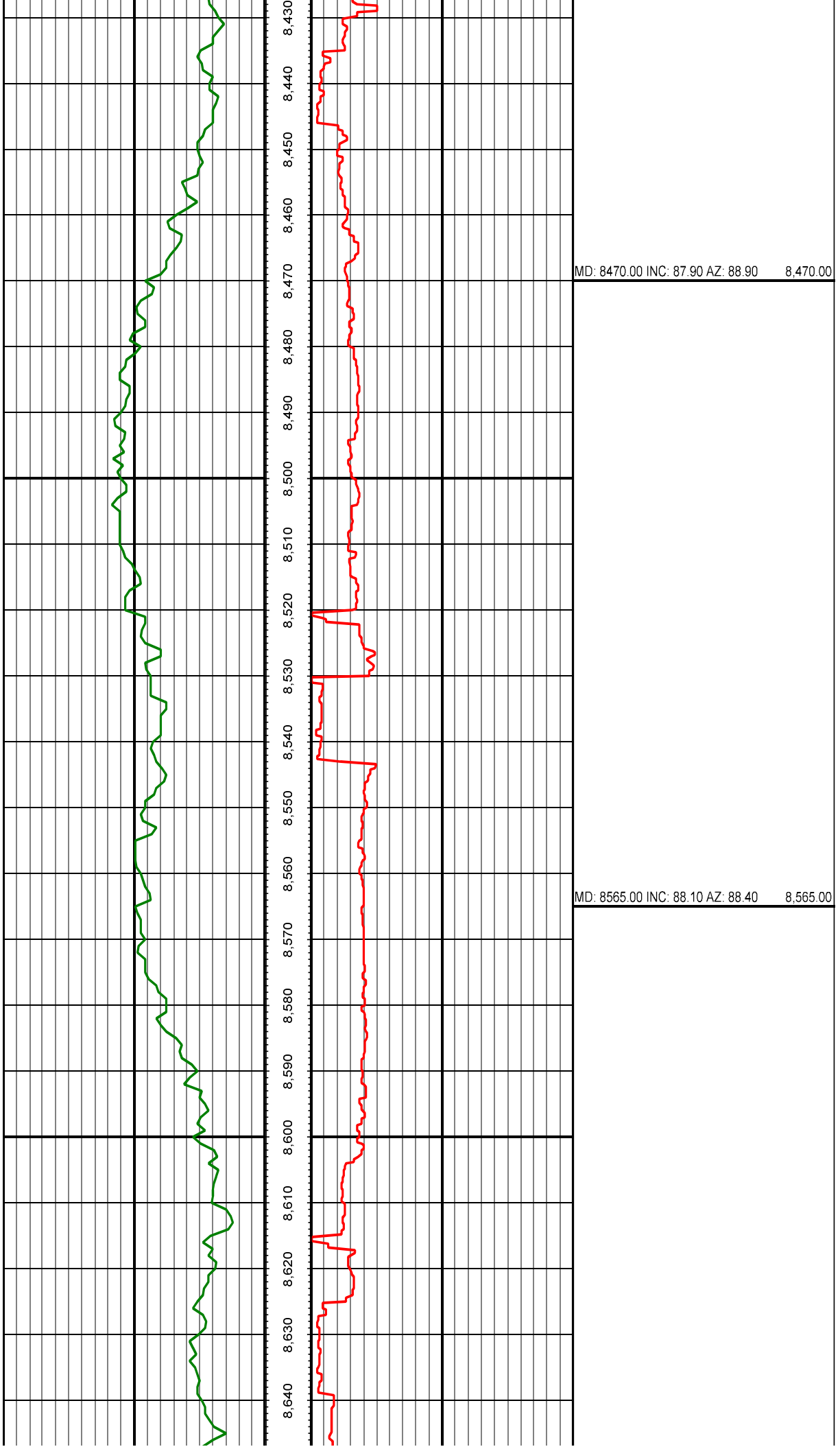


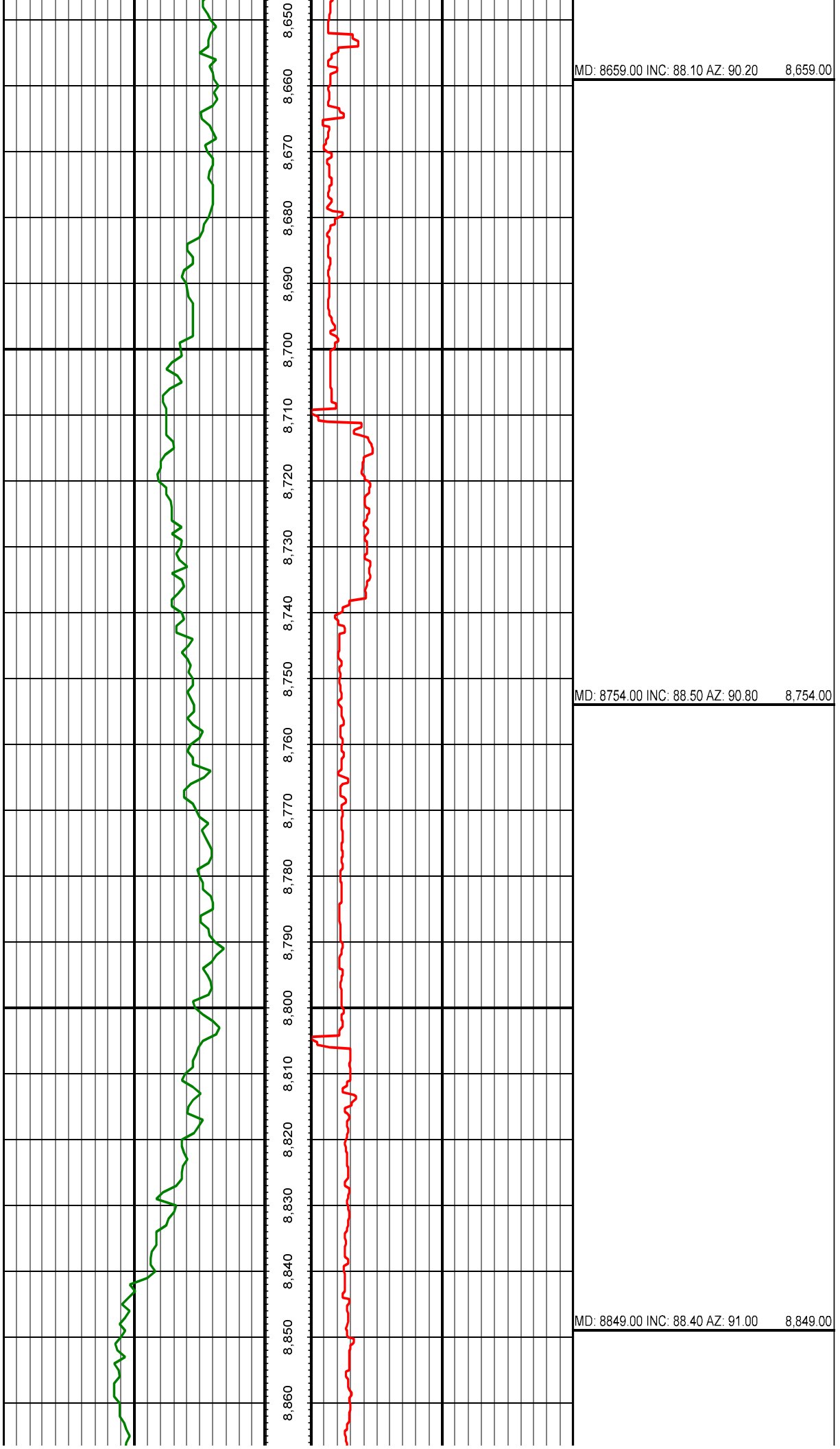


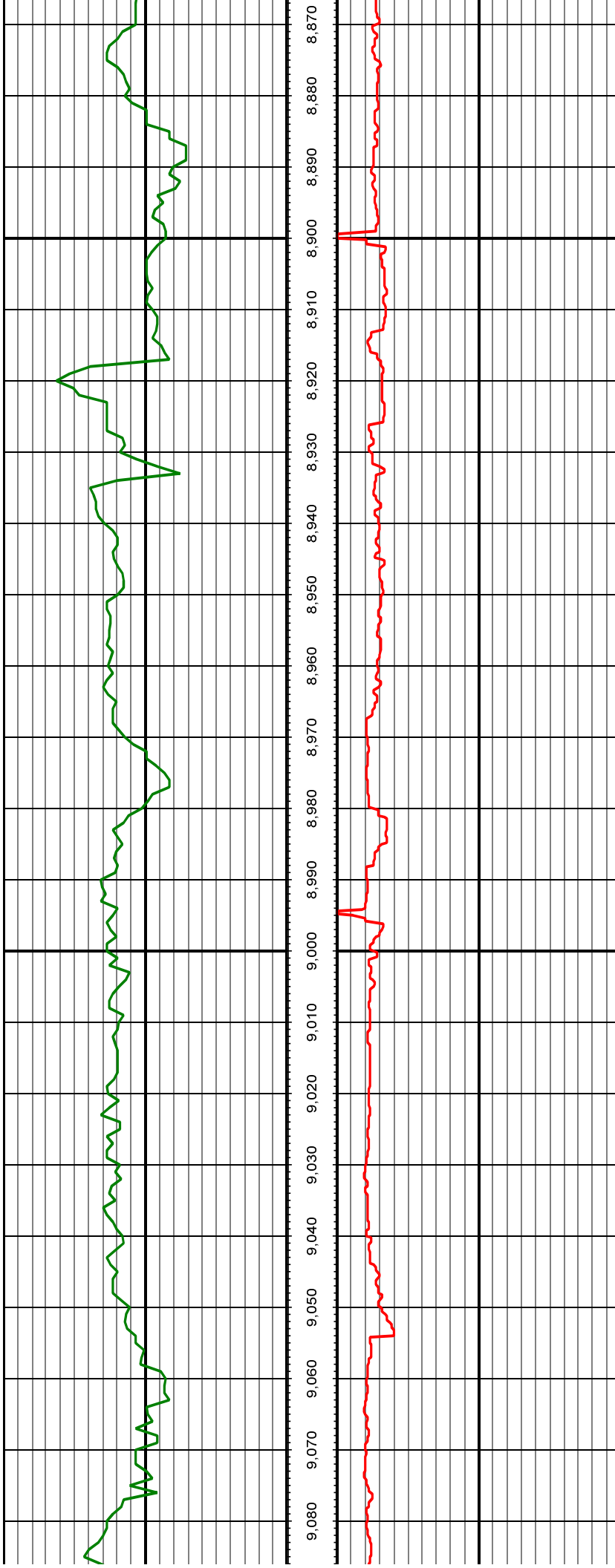






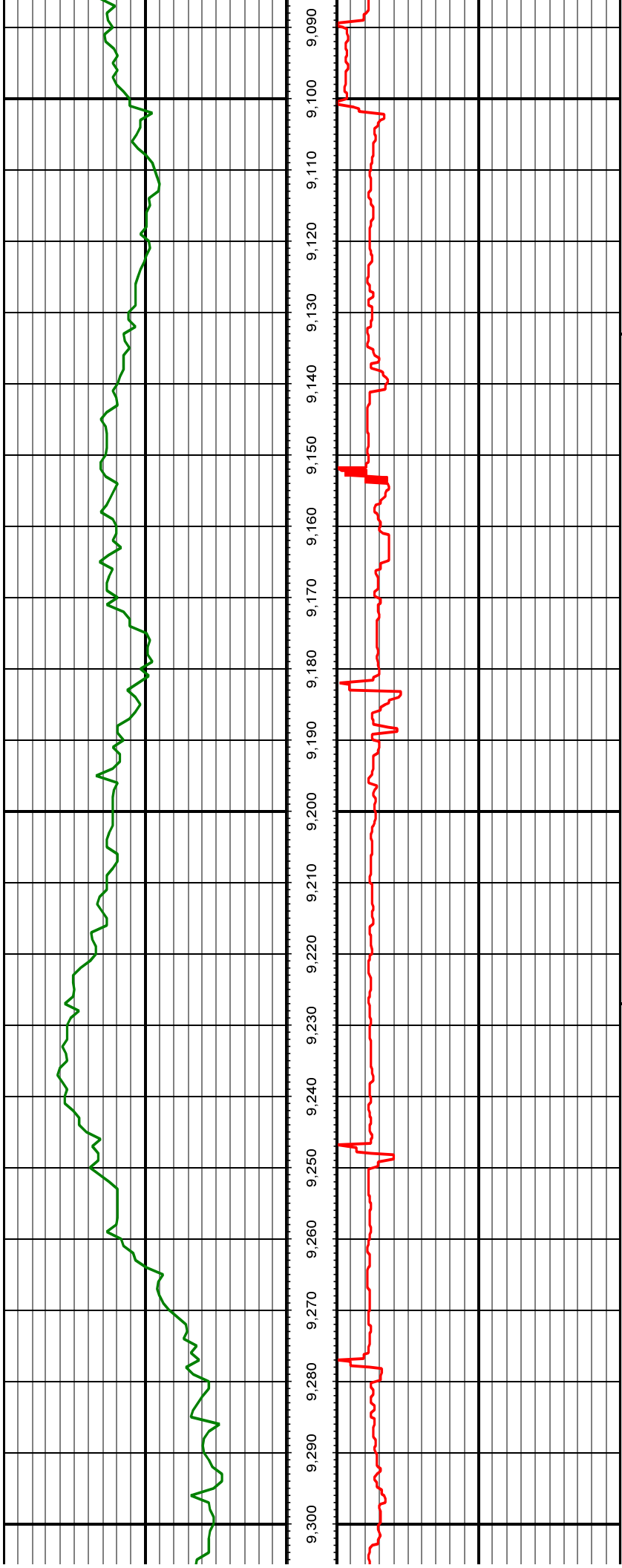






MD: 8944.00 INC: 88.60 AZ: 91.00 8,944.00

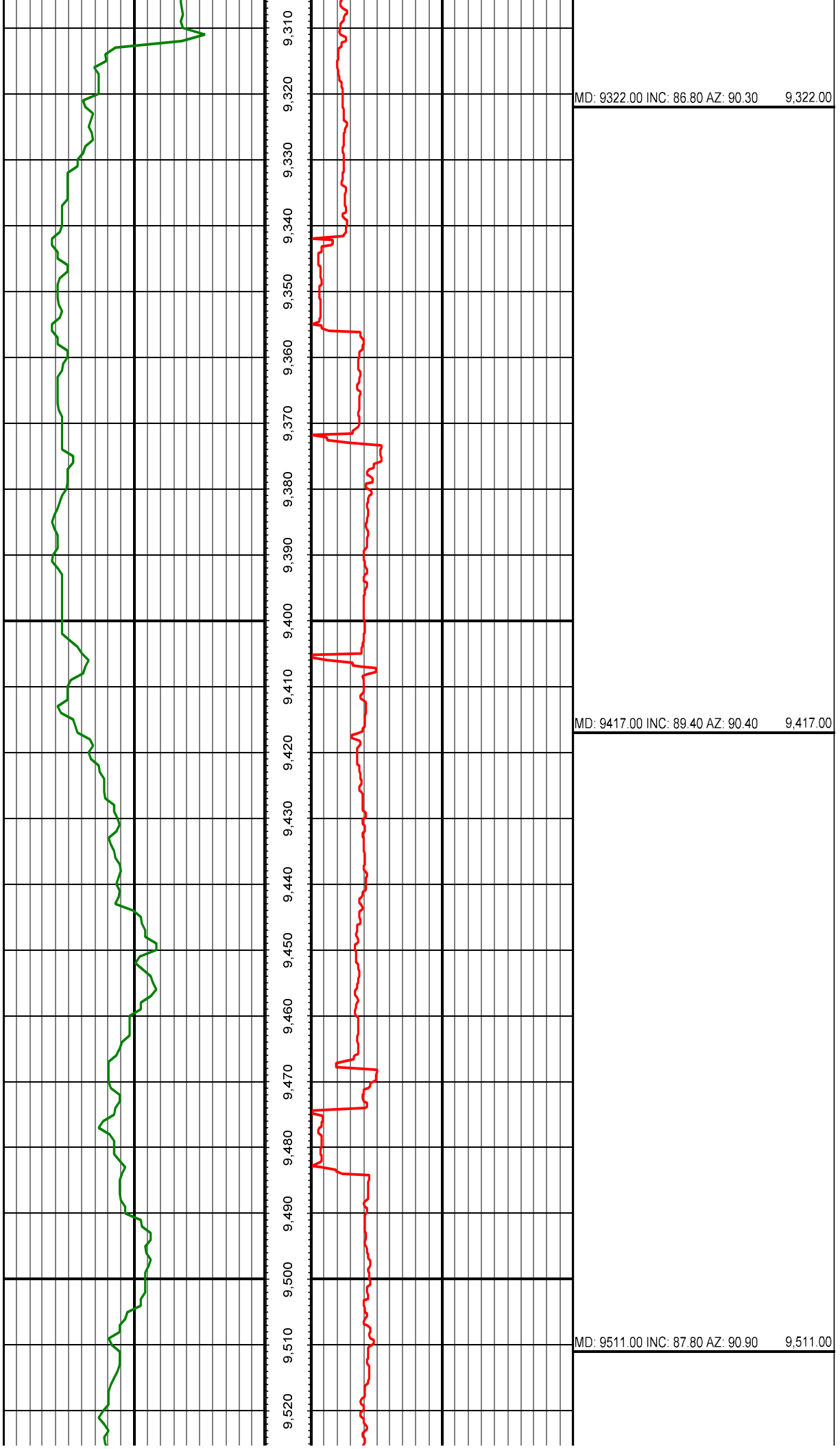
MD: 9038.00 INC: 89.60 AZ: 91.60 9,038.00

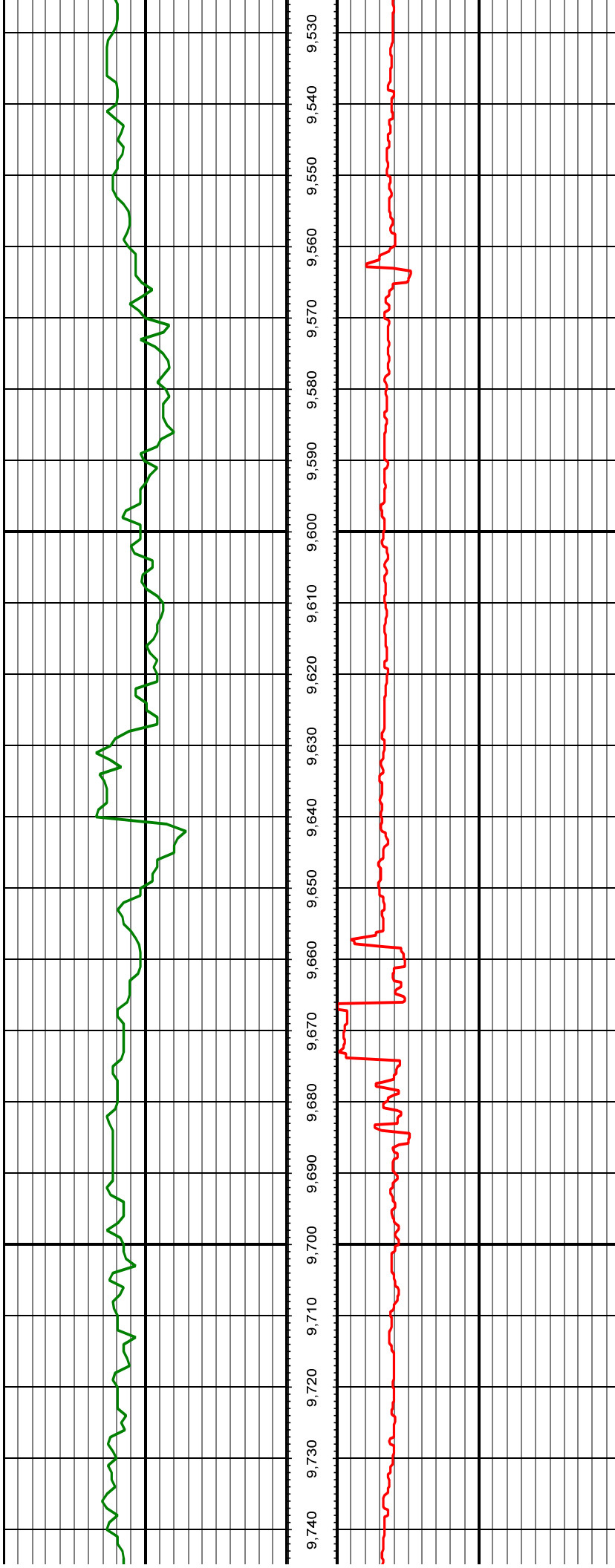


MD: 9133.00 INC: 87.20 AZ: 90.20 9,133.00

MD: 9227.00 INC: 87.30 AZ: 90.70 9,227.00

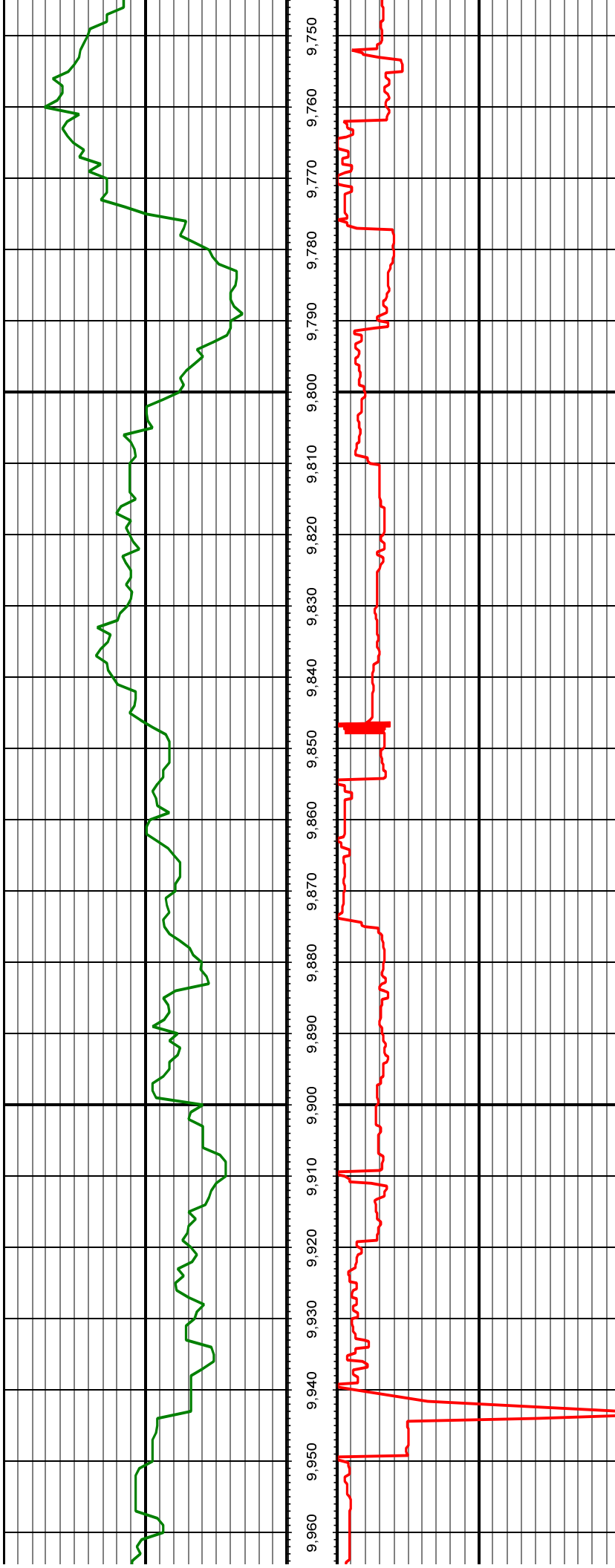






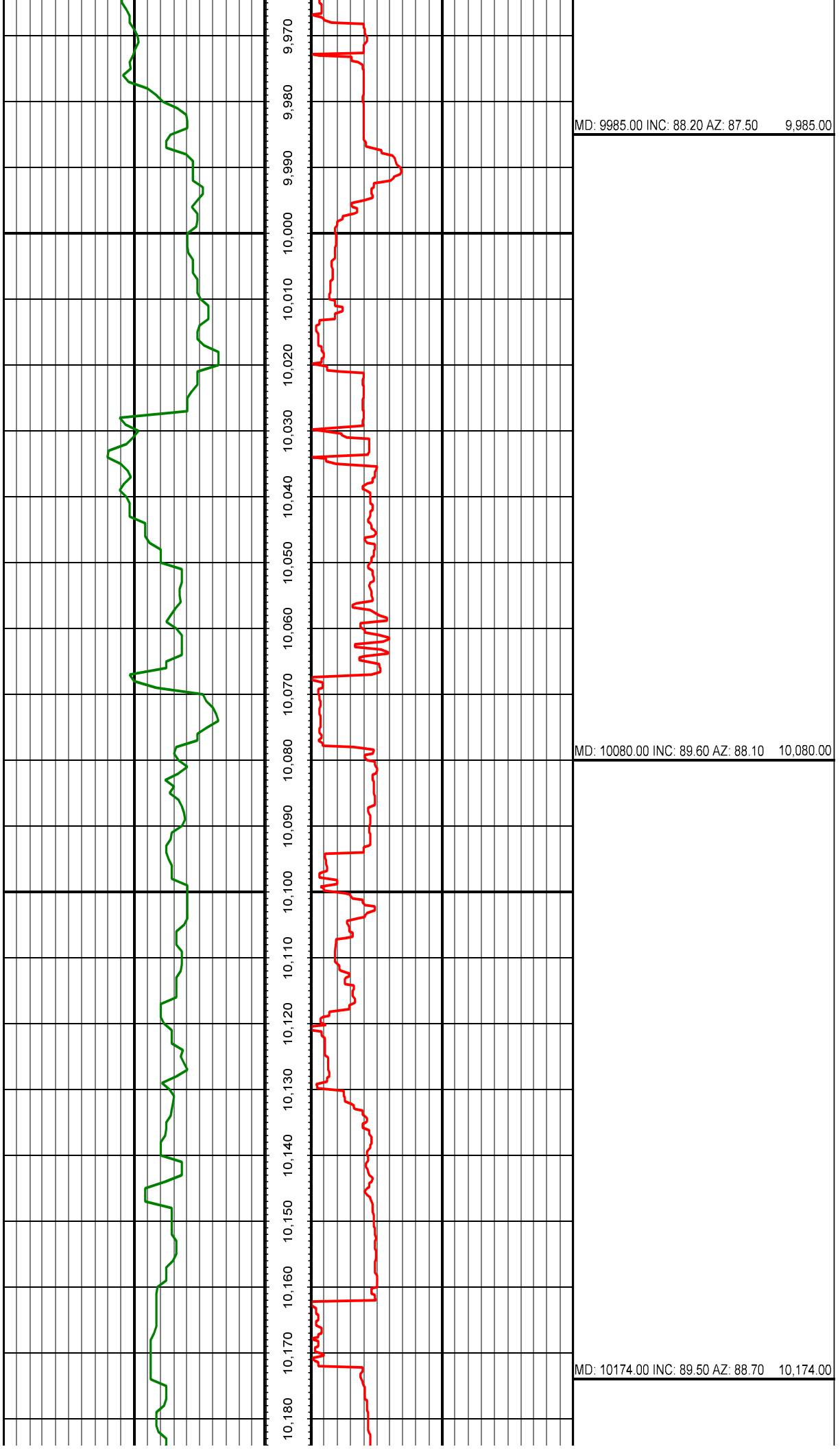
MD: 9606.00 INC: 88.60 AZ: 91.70 9,606.00

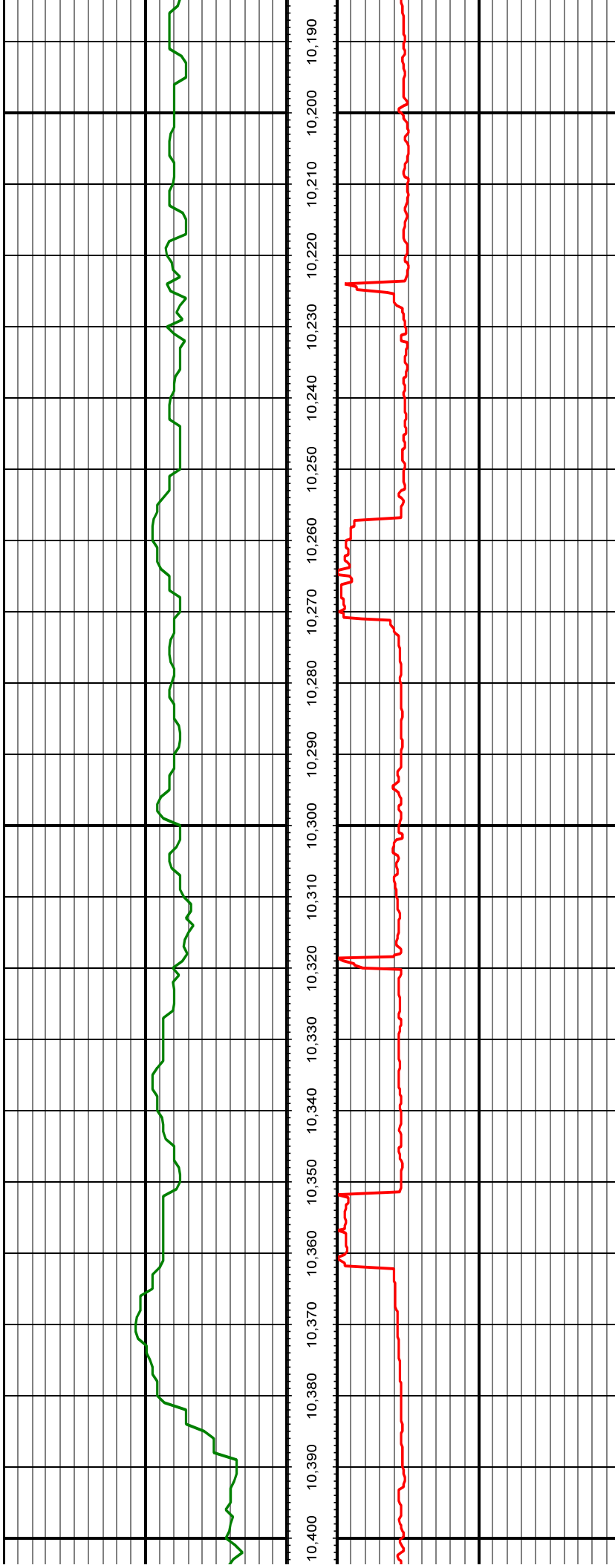
MD: 9701.00 INC: 87.20 AZ: 91.40 9,701.00



MD: 9795.00 INC: 86.90 AZ: 90.10 9,795.00

MD: 9890.00 INC: 86.40 AZ: 87.30 9,890.00





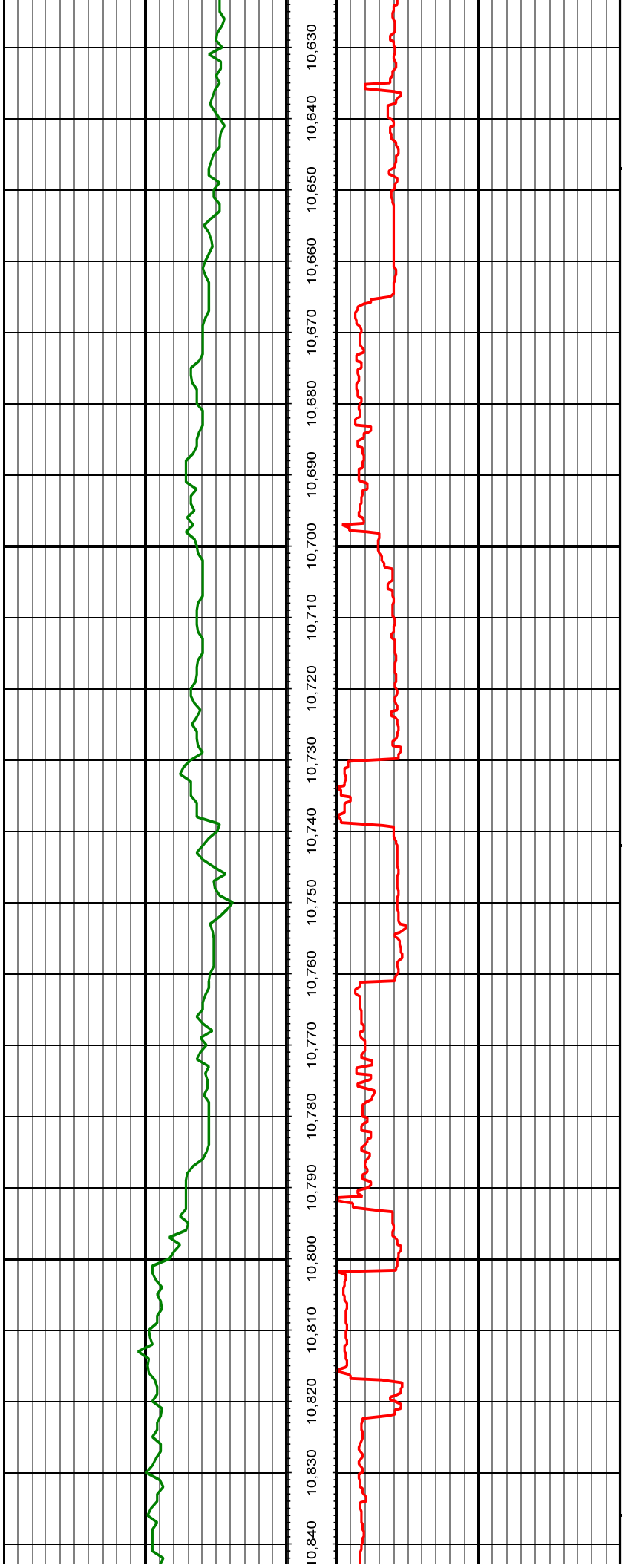
MD: 10269.00 INC: 88.70 AZ: 89.20 10,269.00

MD: 10363.00 INC: 88.20 AZ: 89.70 10,363.00



MD: 10458.00 INC: 88.00 AZ: 90.10 10.458.00

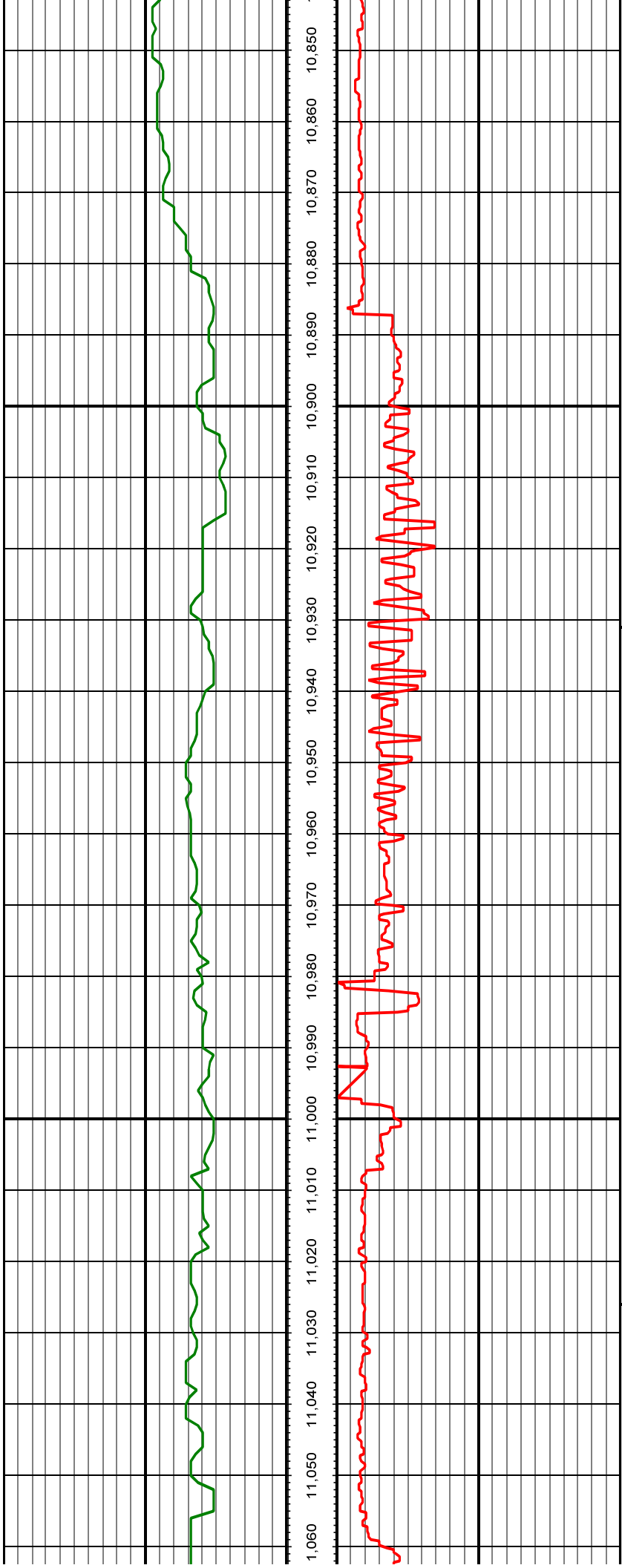
MD: 10552.00 INC: 90.10 AZ: 90.60 10.552.00



MD: 10647.00 INC: 90.10 AZ: 90.30 10,647.00

MD: 10742.00 INC: 88.40 AZ: 88.50 10,742.00

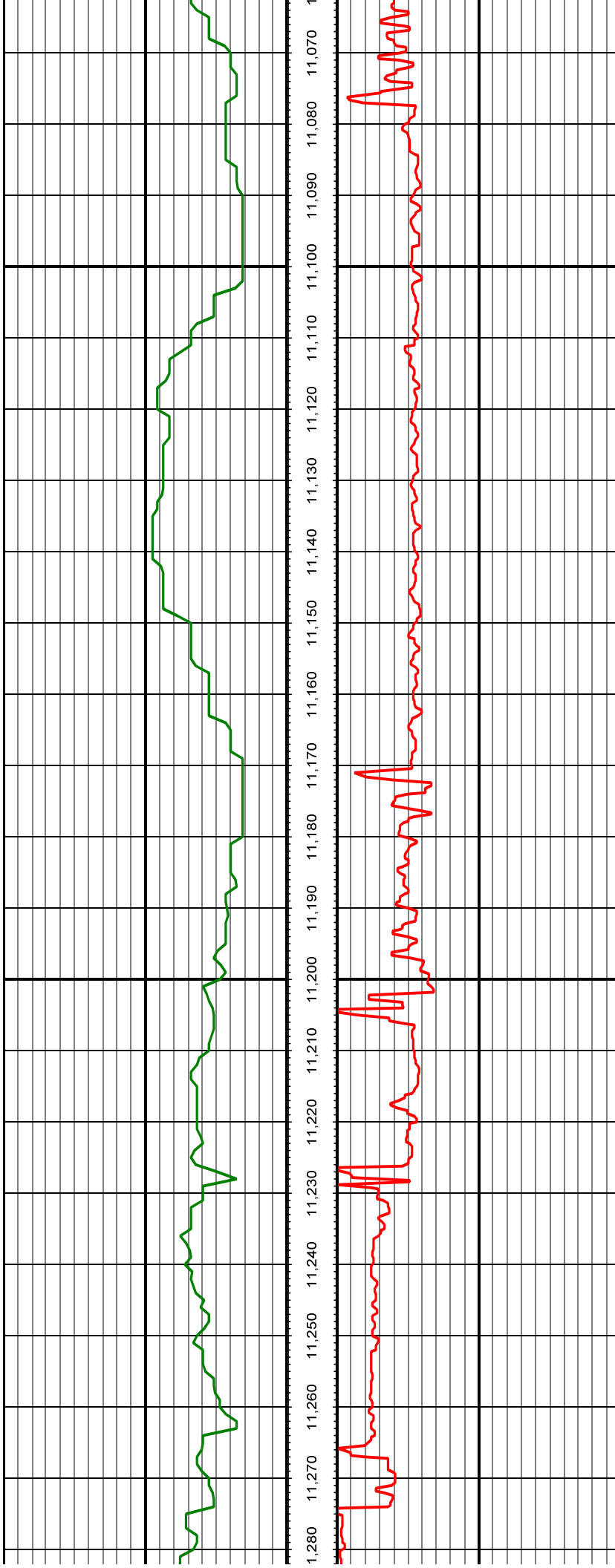
MD: 10836.00 INC: 89.00 AZ: 91.10 10,836.00



MD: 10931.00 INC: 89.10 AZ: 90.30 10,931.00

MD: 11026.00 INC: 89.40 AZ: 89.40 11,026.00





MD: 11120.00 INC: 88.70 AZ: 89.40 11,120.00

MD: 11215.00 INC: 86.90 AZ: 88.20 11,215.00

