

*The Road to Excellence Starts with Safety*

Sold To #: 300721	Ship To #: 3008769	Quote #:	Sales Order #: 900575246
Customer: WPX ENERGY ROCKY MOUNTAIN LLC-EBUS		Customer Rep: Ragsdale, Ted	
Well Name: Federal BCU	Well #: 33-36-199	API/UWI #: 05-103-11949	
Field: SULPHUR CREEK	City (SAP): RANGELY	County/Parish: Rio Blanco	State: Colorado
Lat: N 40.015 deg. OR N 40 deg. 0 min. 54.803 secs.		Long: W 108.447 deg. OR W -109 deg. 33 min. 9.256 secs.	
Contractor: CYCLONE 29	Rig/Platform Name/Num: CYCLONE 29		
Job Purpose: Cement Multiple Stages			
Well Type: Development Well		Job Type: Cement Multiple Stages	
Sales Person: MAYO, MARK		Srvc Supervisor: PONDER, THOMAS	MBU ID Emp #: 427112

**Job Personnel**

HES Emp Name	Exp Hrs	Emp #	HES Emp Name	Exp Hrs	Emp #	HES Emp Name	Exp Hrs	Emp #
BRENNECKE, ANDREW Bailey	17.5	486345	LINN, PAUL Andrew	17.5	479143	PONDER, THOMAS Lynn	17.5	427112
ROMKEE, DALE Alan	17.5	488215	SPARKS, CLIFFORD Paul	10	502476			

**Equipment**

HES Unit #	Distance-1 way	HES Unit #	Distance-1 way	HES Unit #	Distance-1 way	HES Unit #	Distance-1 way
10616651C	60 mile	10744549	60 mile	10784064	60 mile	10867425	60 mile
10897891	60 mile	10995027	60 mile	11006314	60 mile	11583931	60 mile
11808827	60 mile	4902	60 mile	4905	60 mile		

**Job Hours**

Date	On Location Hours	Operating Hours	Date	On Location Hours	Operating Hours	Date	On Location Hours	Operating Hours
07/09/2013	11.5	4						
<b>TOTAL</b>			<i>Total is the sum of each column separately</i>					

**Job**

**Job Times**

Formation Name	Date	Time	Time Zone
Formation Depth (MD) Top	Bottom	Called Out	09 - Jul - 2013 06:30 MST
Form Type	BHST	On Location	09 - Jul - 2013 12:30 MST
Job depth MD	3231.5 ft	Job Depth TVD	3231.5 ft
Water Depth		Job Started	09 - Jul - 2013 21:17 MST
Perforation Depth (MD) From	To	Job Completed	10 - Jul - 2013 04:13 MST
		Departed Loc	10 - Jul - 2013 06:00 MST

**Well Data**

Description	New / Used	Max pressure psig	Size in	ID in	Weight lbm/ft	Thread	Grade	Top MD ft	Bottom MD ft	Top TVD ft	Bottom TVD ft
OPEN HOLE				13.5				1360.	3238.		
OPEN HOLE				14.75				.	1360.		
SURFACE CASING	Unknown		9.625	8.921	36.		J-55	.	3231.5		

**Tools and Accessories**

Type	Size	Qty	Make	Depth	Type	Size	Qty	Make	Depth	Type	Size	Qty	Make
Guide Shoe	9 5/8	1	WTF	3231.45	Packer					Top Plug			
Float Shoe					Bridge Plug					Bottom Plug			
Float Collar	9 5/8	1	WTF	3203.41	Retainer					SSR plug set	9 5/8	1	WTF
Insert Float										Plug Container	9 5/8	1	HES
Stage Tool	9 5/8	1	WTF	1383.81						Centralizers			

**Miscellaneous Materials**

Gelling Agt	Conc	Surfactant	Conc	Acid Type	Qty	Conc	%
Treatment Fld	Conc	Inhibitor	Conc	Sand Type	Size	Qty	

**Fluid Data**

Stage/Plug #: 1
-----------------

Fluid #	Stage Type	Fluid Name	Qty	Qty uom	Mixing Density lbm/gal	Yield ft <sup>3</sup> /sk	Mix Fluid Gal/sk	Rate bbl/min	Total Mix Fluid Gal/sk
1	Fresh Water Spacer		40.00	bbl	8.33	.0	.0	6.0	
2	VersaCem GJ1 1st Stage Lead	VERSACEM (TM) SYSTEM (452010)	515.0	sacks	12.85	1.77	9.34	7.0	9.34
	9.34 Gal	FRESH WATER							
3	VersaCem GJ2 1st Stage tail	VERSACEM (TM) SYSTEM (452010)	185.0	sacks	12.8	1.96	10.95	7.0	10.95
	10.95 Gal	FRESH WATER							
4	Displacement		248.00	bbl	8.33	.0	.0	8.0	
5	Fresh Water Spacer		20.00	bbl	8.33	.0	.0	4.0	
6	VersaCem GJ2 2nd Stage Tail	VERSACEM (TM) SYSTEM (452010)	730.0	sacks	12.8	1.96	10.95	7.0	10.95
	10.95 Gal	FRESH WATER							
7	Displacement		107.00	bbl	8.33	.0	.0	8.0	
<b>Calculated Values</b>		<b>Pressures</b>			<b>Volumes</b>				
Displacement	247.7	Shut In: Instant		Lost Returns	82	Cement Slurry	517.5	Pad	
Top Of Cement	SURFACE	5 Min		Cement Returns	61	Actual Displacement	247.7	Treatment	
Frac Gradient		15 Min		Spacers	65	Load and Breakdown		Total Job	937.2
<b>Rates</b>									
Circulating	RIG	Mixing	6	Displacement	8	Avg. Job	6		
Cement Left In Pipe	Amount	28 ft	Reason	Shoe Joint					
Frac Ring # 1 @	ID	Frac ring # 2 @	ID	Frac Ring # 3 @	ID	Frac Ring # 4 @	ID		
The Information Stated Herein Is Correct				Customer Representative Signature					

*The Road to Excellence Starts with Safety*

Sold To #: 300721	Ship To #: 3008769	Quote #:	Sales Order #: 900575246
Customer: WPX ENERGY ROCKY MOUNTAIN LLC-EBUS		Customer Rep: Ragsdale, Ted	
Well Name: Federal BCU	Well #: 33-36-199	API/UWI #: 05-103-11949	
Field: SULPHUR CREEK	City (SAP): RANGELY	County/Parish: Rio Blanco	State: Colorado
<b>Legal Description:</b>			
Lat: N 40.015 deg. OR N 40 deg. 0 min. 54.803 secs.		Long: W 108.447 deg. OR W -109 deg. 33 min. 9.256 secs.	
Contractor: CYCLONE 29	Rig/Platform Name/Num: CYCLONE 29		
Job Purpose: Cement Multiple Stages			Ticket Amount:
Well Type: Development Well	Job Type: Cement Multiple Stages		
Sales Person: MAYO, MARK	Srvs Supervisor: PONDER, THOMAS	MBU ID Emp #: 427112	

Activity Description	Date/Time	Cht #	Rate bbl/min	Volume bbl		Pressure psig		Comments
				Stage	Total	Tubing	Casing	
Call Out	07/09/2013 06:30							
Crew Leave Yard	07/09/2013 09:00							ALL HES PRESENT FOR PRE-CONVOY SAFETY HUDDLE
Arrive At Loc	07/09/2013 12:30							RIG WAS STILL PULLING DRILL PIPE WHEN THE CREW ARRIVED ON LOCATION
Assessment Of Location Safety Meeting	07/09/2013 16:30							TD- 3238', TP- 3231.45', SJ- 28.04', MUD- 9.8 PPG, HOLE- 14 3/4" TO 1360', HOLE- 13 1/2" FROM 1360 TO TD, SURFACE CASING- 9 5/8" 36# J-55 MSC SET @ 1383.84'
Rig-Up Equipment	07/09/2013 17:00							1-550 PICKUP, 1-ELITE PUMP, 1-660 CUFT BULK TRUCK, 2-1700 CUFT STORAGE SILO
Safety Meeting	07/09/2013 20:30							ALL HES PRESENT, RIG CREW PRESENT, RIG STARTED CIRCULATING ON BOTTOM @ 1900
Start Job	07/09/2013 21:17		2	2			50.0	FILL LINES
Test Lines	07/09/2013 21:22		0.1	0.1			3956.0	GOOD PRESSURE TEST
Pump Spacer 1	07/09/2013 21:28		6	40			261.0	FRESH WATER
Activity Description	Date/Time	Cht #	Rate bbl/min	Volume bbl		Pressure psig		Comments
				Stage	Total	Tubing	Casing	

Sold To #: 300721

Ship To #: 3008769

Quote #:

Sales Order #: 900575246

SUMMIT Version: 7.3.0081

Tuesday, July 16, 2013 11:46:00

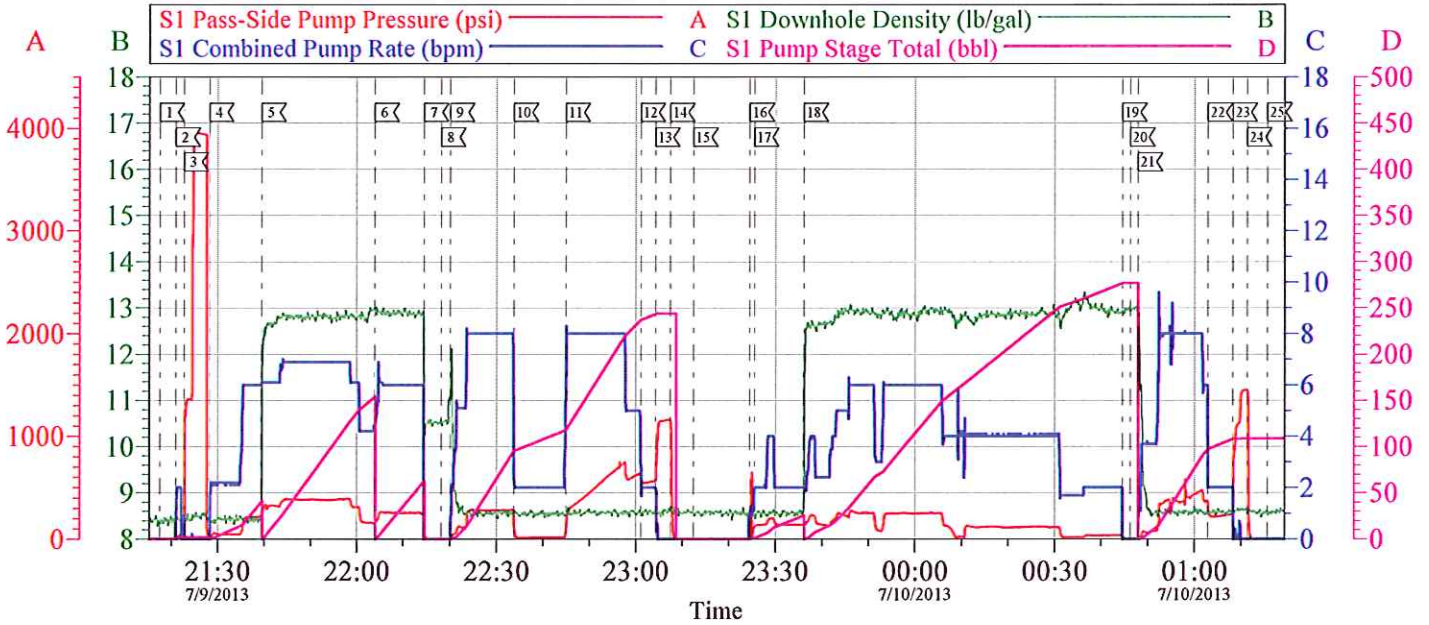
Pump Lead Cement	07/09/2013 21:39		7	162.3			395.0	515 SKS 12.8 PPG 1.77 FT3/SK 9.34 GAL/SK, USED 30# TUFF FIBER IN THE FIRST 100 BBL OF LEAD CEMENT
Pump Tail Cement	07/09/2013 22:03		6	64.6			266.0	185 SKS 12.8 PPG 1.96 FT3/SK 10.95 GAL/SK
Shutdown	07/09/2013 22:14							
Drop Plug	07/09/2013 22:18							REMOVED TOP OF PLUG CONTAINER TO DROP 1ST STAGE PLUG
Pump Displacement	07/09/2013 22:20		8	237.6			750.0	FRESH WATER, WASHED UP MIXING TUB WITH THE FIRST 10 BBL OF DISPLACEMENT, SLOWED RATE TO 2 BPM 10 BBL BEFORE THE MSC AND INCREASED RATE BACK TO 8 BPM 10 BBL AFTER MSC
Slow Rate	07/09/2013 23:01		2	10	247.6		548.0	GOOD RETURNS THROUGHOUT 1ST STAGE
Bump Plug	07/09/2013 23:04				247.6		590.0	PLUG BUMPED
Check Floats	07/09/2013 23:07						1166. 0	FLOATS HELD, 1 BBL BACK TO THE DISPLACEMENT TANKS
Drop Opening Device For Multiple Stage Cementer	07/09/2013 23:12							REMOVED TOP TO PLUG CONTAINER TO DROP TOOL OPENING DEVICE, LOADED 2ND STAGE TOP PLUG BEFORE REPLACING TOP OF THE PLUG CONTAINER
Open Multiple Stage Cementer	07/09/2013 23:24		1	5			649.0	WAITED 10 MINS, PRESSURED UP TO 649 PSI TO OPEN TOOL, BEGAN CIRCULATING WELL WITH FRESH WATER
Activity Description	Date/Time	Cht #	Rate bbl/ min	Volume bbl		Pressure psig		Comments
				Stage	Total	Tubing	Casing	

Pump Spacer 1	07/09/2013 23:25		4	20			202.0	FRESH WATER, CIRCULATED 60 BBL OF CEMENT TO SURFACE FROM THE 1ST STAGE
Pump Tail Cement	07/09/2013 23:36		6	279.6			280.0	730 SKS 12.8 PPG 1.96 FT3/SK 10.95 GAL/SK, USED 30# TUFF FIBER IN THE LAST 100 BBL OF TAIL CEMENT
Shutdown	07/10/2013 00:44							
Drop Plug	07/10/2013 00:46							PLUG DROP VERIFIED VIA TATTLE TELL BY CUSTOMER REP
Pump Displacement	07/10/2013 00:47		8	97			586.0	FRESH WATER, WASHED UP MIXING TUB ON TOP OF PLUG WITH FIRST 10 BBL OF DISPLACEMENT
Slow Rate	07/10/2013 01:02		2	10	107		220.0	GOOD CIRCULATION THROUGH OUT THE 2ND STAGE UNTIL 25 BBL INTO DISPLACEMENT, GOT 1 BBL OF CEMENT TO SURFACE AND LOST RETURNS FOR THE REMAINDER OF THE JOB
Close Multiple Stage Cementer	07/10/2013 01:08				107		280.0	PLUG BUMPED
Check Floats	07/10/2013 01:11						1451.0	MSC CLOSED, 1 BBL BACK TO THE DISPLACEMENT TANKS
Comment	07/10/2013 01:15							AFTER SHUTTING DOWN TAGGED TOP OF CEMENT 110' FROM SURFACE, CUSTOMER REP DECIDED TO WAIT 2 HOURS AND WILL TAG AGAIN
Comment	07/10/2013 03:20							TAGGED TOP OF CEMENT @ 150', CUSTOMER REP ASKED THAT WE TOP OUT WELL AND PUMP ENOUGH TO TOP OUT BCU 532-36-199 AS WELL

Activity Description	Date/Time	Cht #	Rate bbl/min	Volume bbl		Pressure psig		Comments
				Stage	Total	Tubing	Casing	
Start Job	07/10/2013 03:53							MIXED FIRST 8 BBL OF CEMENT
Pump Water	07/10/2013 03:53		1	0.2			.0	PUMPED FRESH WATER TO MAKE SURE LINES WERE CLEAR
Pump Tail Cement	07/10/2013 03:54		2	35.8			38.0	175 SKS 15.8 PPG 1.15 FT3/SK 5.00 GAL/SK, TOP OUT CEMENT, 350 SKS OF CEMENT WAS DELIVERED TO LOCATION, USED ONLY 175 SKS FOR TOP OUT
Shutdown	07/10/2013 04:13							TOPPED OUT WELL BCU 532-36-199 WITH 2 BBL FROM TOPPING OUT BCU 33-36-199
End Job	07/10/2013 04:13							THANK YOU FOR CHOOSING HALLIBURTON, THOMAS PONDER AND CREW

# WPX BCU 33-36-199

## 9.625 IN SURFACE MULTI STAGE



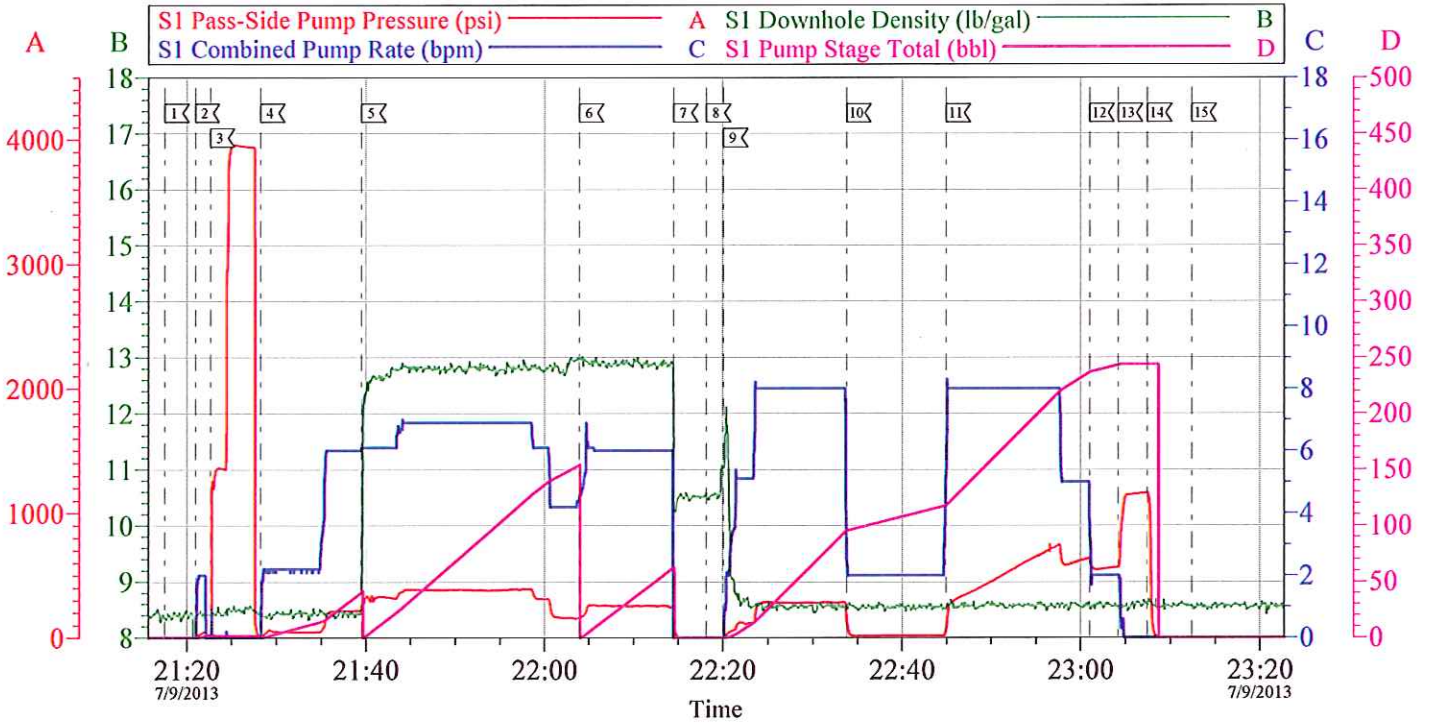
Local Event Log								
Maximum	SPPP	Maximum	SPPP	Maximum	SPPP	Maximum	SPPP	
[1] START JOB	7/9/2013 21:17:29	5,000	[2] FILL LINES	7/9/2013 21:20:56	47.00	[3] TEST LINES	7/9/2013 21:22:39	395.6
[4] PUMP H2O SPACER	7/9/2013 21:28:15	261.0	[5] PUMP LEAD CEMENT	7/9/2013 21:39:32	395.0	[6] PUMP TAIL CEMENT	7/9/2013 22:03:56	266.0
[7] SHUTDOWN	7/9/2013 22:14:29	197.0	[8] DROP 1ST STAGE PLUG	7/9/2013 22:18:09	5,000	[9] PUMP H2O DISPLACEMENT	7/9/2013 22:20:02	288.0
[10] SLOW RATE	7/9/2013 22:33:46	190.0	[11] RESUME RATE	7/9/2013 22:44:56	750.0	[12] SLOW RATE	7/9/2013 23:01:02	631.0
[13] BUMP PLUG	7/9/2013 23:04:11	1165	[14] CHECK FLOATS	7/9/2013 23:07:25	1166	[15] DROP OPENING DEVICE	7/9/2013 23:12:22	7,143
[16] OPEN MSC	7/9/2013 23:24:32	649.0	[17] PUMP H2O SPACER	7/9/2013 23:25:28	202.0	[18] PUMP TAIL CEMENT	7/9/2013 23:36:07	280.0
[19] SHUTDOWN	7/10/2013 00:44:32	39.00	[20] DROP PLUG	7/10/2013 00:46:17	8,000	[21] PUMP H2O DISPLACEMENT	7/10/2013 00:47:56	586.0
[22] SLOW RATE	7/10/2013 01:02:54	372.0	[23] CLOSE MSC	7/10/2013 01:08:17	1451	[24] CHECK MSC	7/10/2013 01:11:21	1451
[25] END JOB	7/10/2013 01:15:42	1,000						

Customer: WPX	Job Date: 09-Jul-2013	Sales Order #: 900575246
Well Description: BCU 33-36-199	Job Type: MULTI STAGE SURFACE	ADC Used: YES
Company Rep: BEAUDE OAKS	Cement Supervisor: THOMAS PONDER	Elite #/Operator: ELITE #3 / ANDREW LINN

OptiCem v6.4.10  
10-Jul-13 02:45

## WPX BCU 33-36-199

### 9.625 IN SURFACE 1ST STAGE



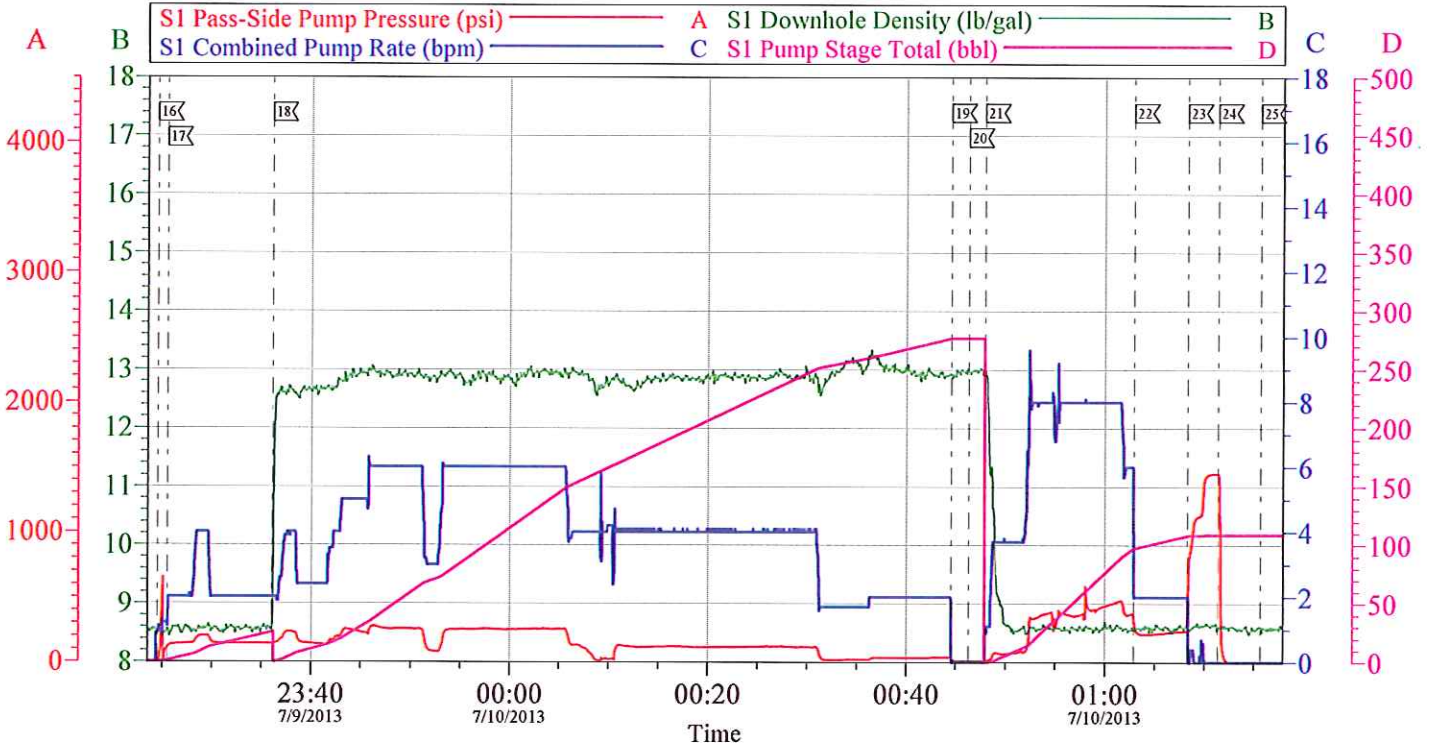
Local Event Log											
Maximum	SPPP	Maximum	SPPP	Maximum	SPPP	Maximum	SPPP				
1	START JOB	21:17:29	5,000	2	HILL LINES	21:20:56	47.00	3	TEST LINES	21:22:39	3956
4	PUMP H2O SPACER	21:28:15	261.0	5	PUMP LEAD CEMENT	21:39:32	395.0	6	PUMP TAIL CEMENT	22:03:56	266.0
7	SHUTDOWN	22:14:29	197.0	8	DROP 1ST STAGE PLUG	22:18:09	5,000	9	PUMP H2O DISPLACEMENT	22:20:02	288.0
10	SLOW RATE	22:33:46	190.0	11	RESUME RATE	22:44:56	750.0	12	SLOW RATE	23:01:02	631.0
13	BUMP PLUG	23:04:11	1165	14	CHECK FLOATS	23:07:25	1166	15	DROP OPENING DEVICE	23:12:22	7,143

Customer: WPX	Job Date: 09-Jul-2013	Sales Order #: 900575246	
Well Description: BCU 33-36-199	Job Type: MULTI STAGE SURFACE	ADC Used: YES	
Company Rep: BEAUDE OAKS	Cement Supervisor: THOMAS PONDER	Elite #/Operator: ELITE #3 / ANDREW LINN	

OptiCem v6.4.10  
10-Jul-13 02:33

## WPX BCU 33-36-199

### 9.625 IN SURFACE 2ND STAGE

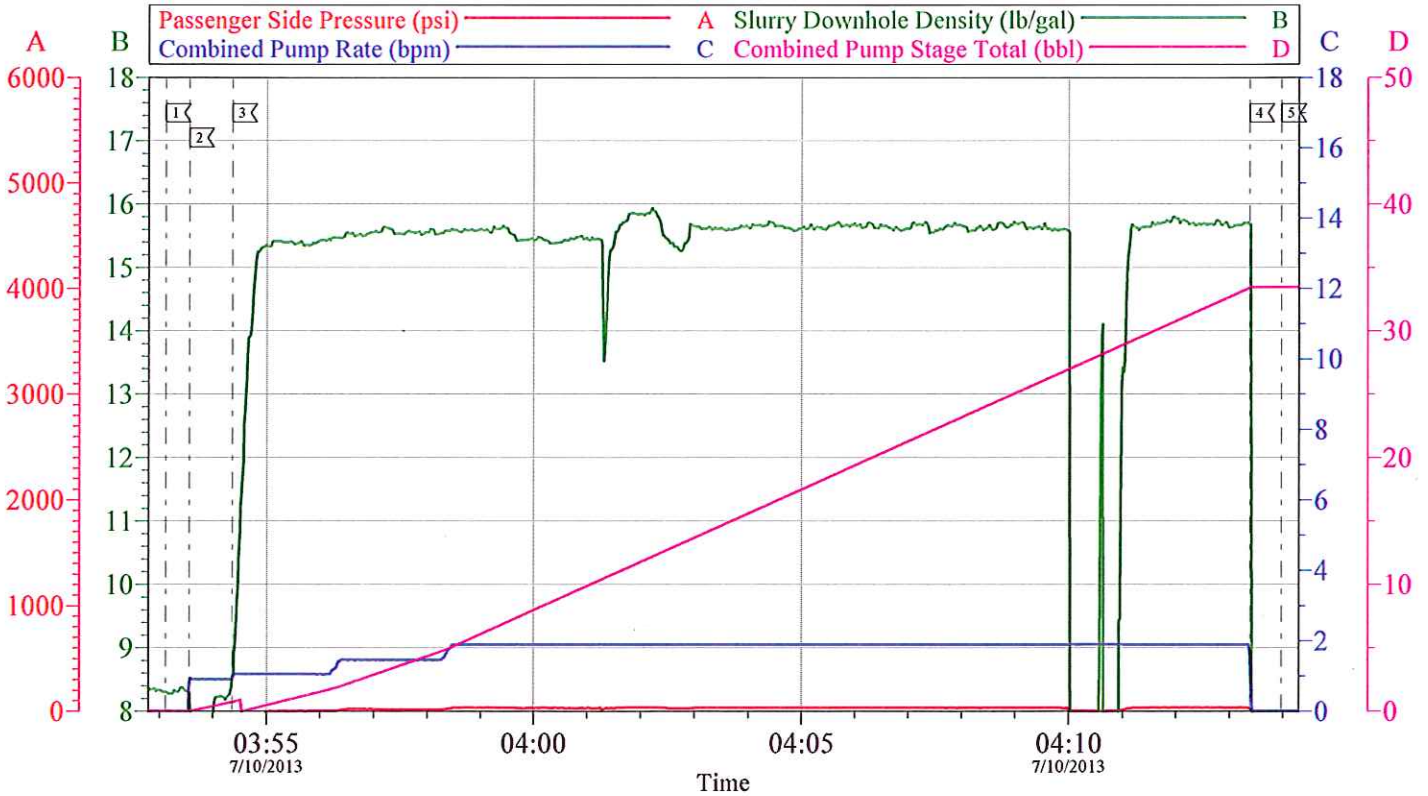


Local Event Log							
Maximum	SPPP		Maximum	SPPP		Maximum	SPPP
16	OPEN MSC	7/9/2013 23:24:32	649.0	17	PUMP H2O SPACER	7/9/2013 23:25:28	202.0
19	SHUTDOWN	7/10/2013 00:44:32	39.00	20	DROP PLUG	7/10/2013 00:46:17	8.000
22	SLOW RATE	7/10/2013 01:02:54	372.0	23	CLOSE MSC	7/10/2013 01:08:17	1451
25	END JOB	7/10/2013 01:15:42	1.000	18	PUMP TAIL CEMENT	7/9/2013 23:36:07	280.0
				21	PUMP H2O DISPLACEMENT	7/10/2013 00:47:56	586.0
				24	CHECK MSC	7/10/2013 01:11:21	1451

Customer: WPX	Job Date: 09-Jul-2013	Sales Order #: 900575246
Well Description: BCU 33-36-199	Job Type: MULTI STAGE SURFACE	ADC Used: YES
Company Rep: BEAUDE OAKS	Cement Supervisor: THOMAS PONDER	Elite #/Operator: ELITE #3 / ANDREW LINN

OptiCem v6.4.10  
10-Jul-13 02:42

## WPX BCU 33-36-199 1ST TOP OUT



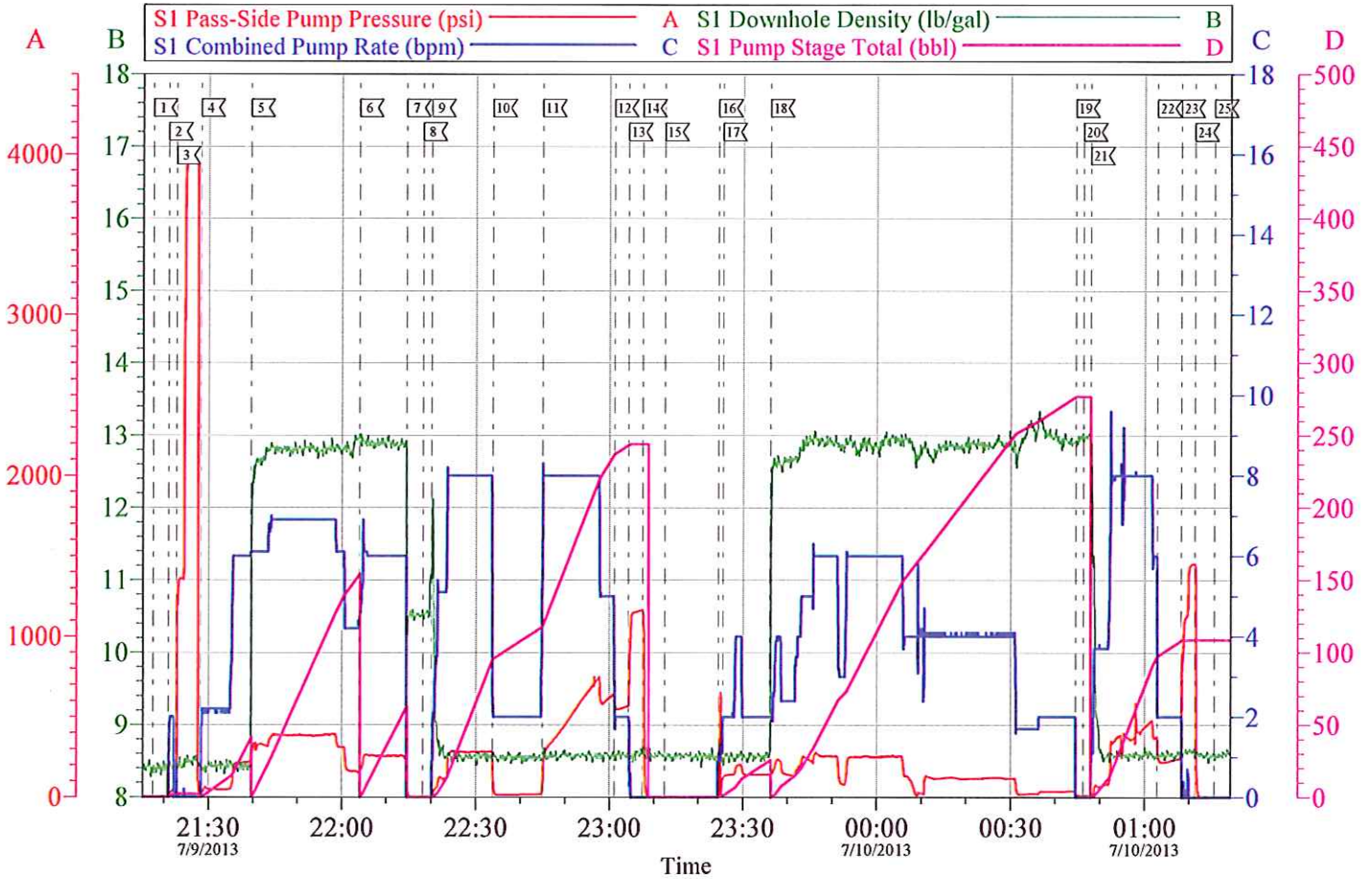
Local Event Log											
	Maximum	PSP		Maximum	PSP						
[1]	START JOB	03:53:07	-2.630	[2]	PUMP WATER	03:53:33	-1.790	[3]	PUMP TOP OUT	03:54:21	38.78
[4]	SHUTDOWN	04:13:23	35.00	[5]	END JOB	04:13:59	15.19				

Customer: WPX	Job Date: 10-Jul-2013	Sales Order #: 900575246
Well Description: BCU 33-36-199	Job Type: TOP OUT	ADC Used: YES
Company Rep: BEAUDE OAKS	Cement Supervisor: THOMAS PONDER	Elite #/Operator: ELITE #3 / ANDREW LINN

OptiCem v6.4.10  
10-Jul-13 04:55

## WPX BCU 33-36-199

### 9.625 IN SURFACE MULTI STAGE

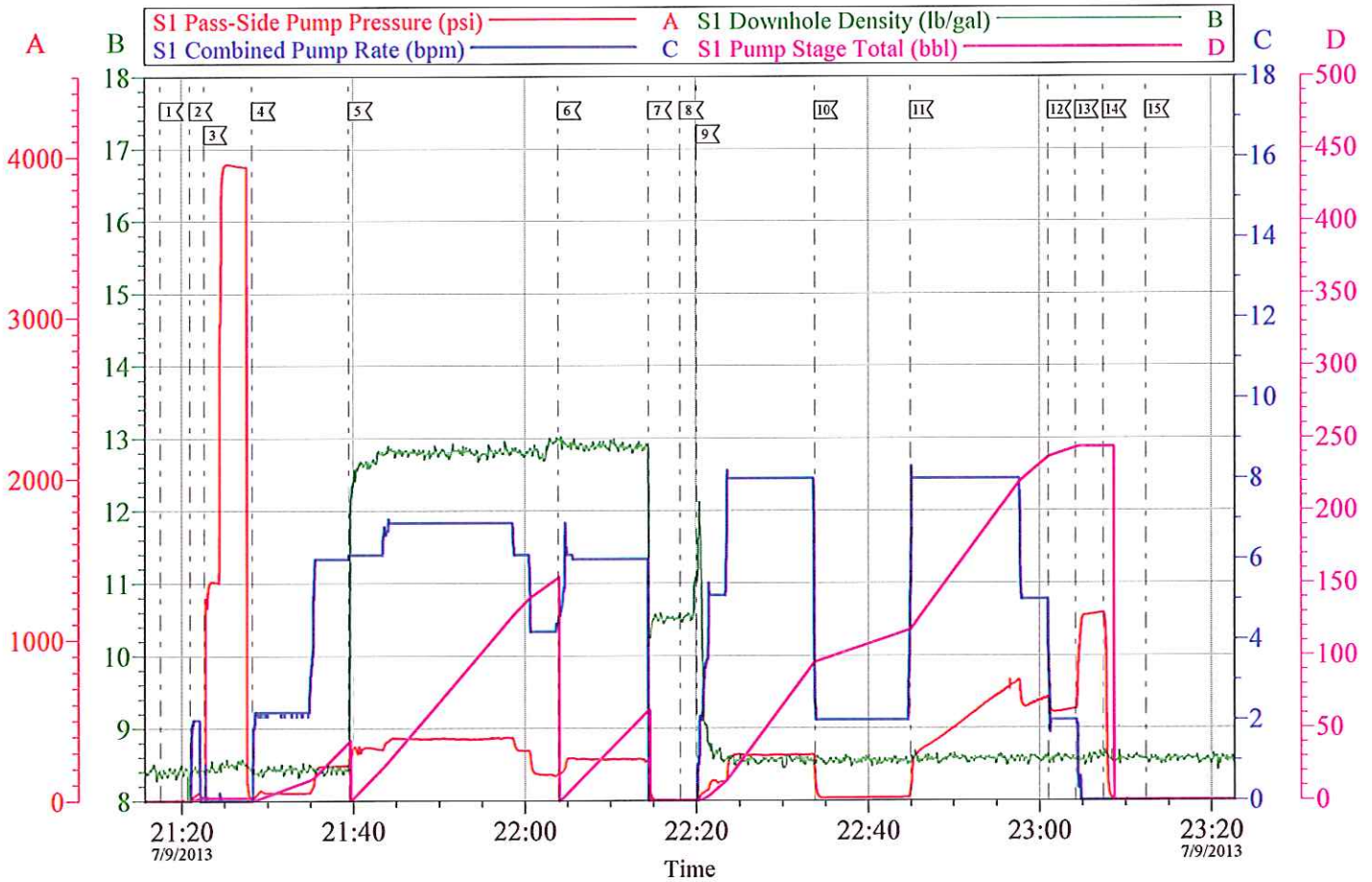


Customer: WPX	Job Date: 09-Jul-2013	Sales Order #: 900575246
Well Description: BCU 33-36-199	Job Type: MULTI STAGE SURFACE	ADC Used: YES
Company Rep: BEAUDE OAKS	Cement Supervisor: THOMAS PONDER	Elite #/Operator: ELITE #3 / ANDREW LINN

OptiCem v6.4.10  
10-Jul-13 02:44

## WPX BCU 33-36-199

### 9.625 IN SURFACE 1ST STAGE

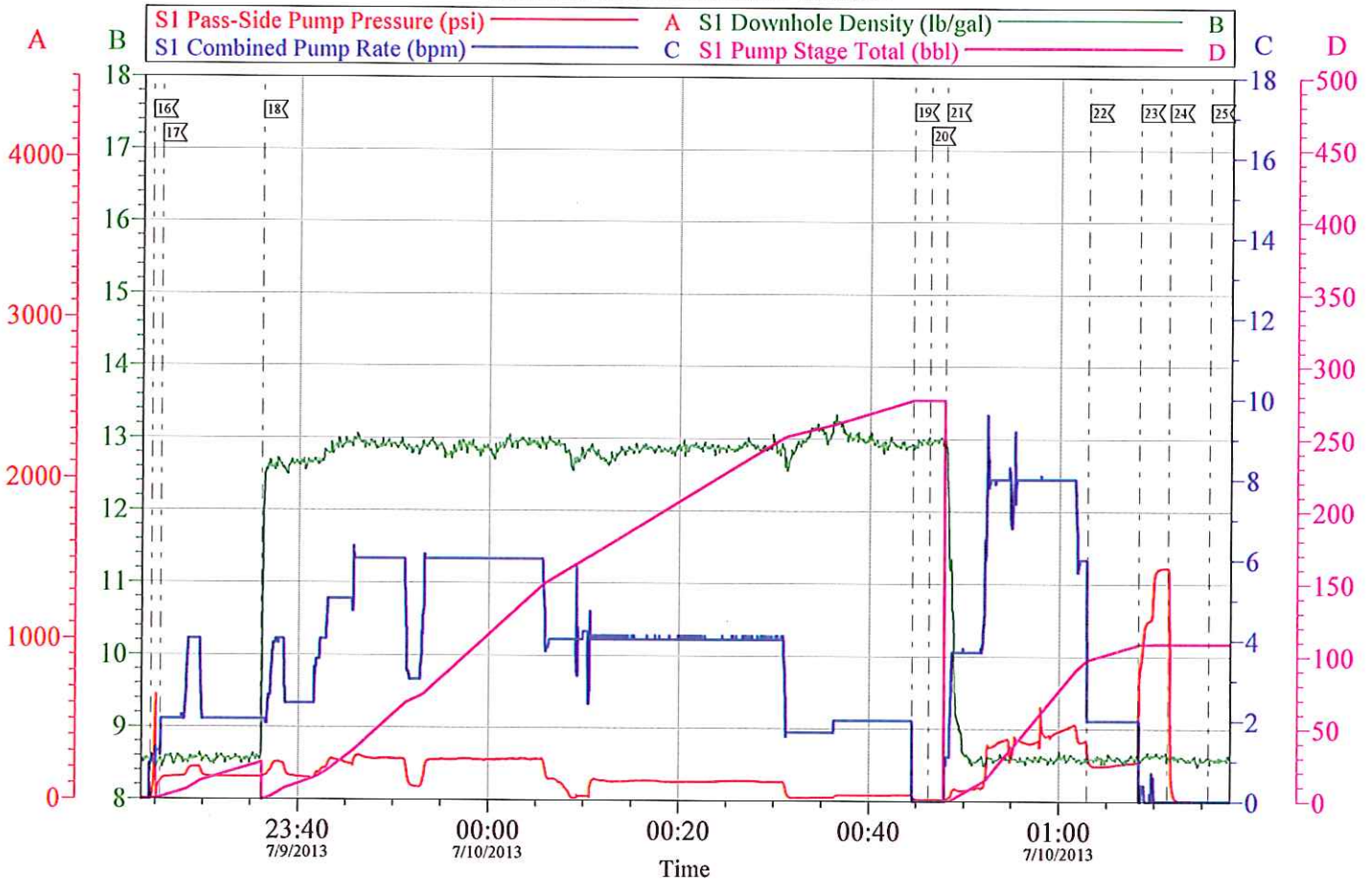


Customer: WPX	Job Date: 09-Jul-2013	Sales Order #: 900575246
Well Description: BCU 33-36-199	Job Type: MULTI STAGE SURFACE	ADC Used: YES
Company Rep: BEAUDE OAKS	Cement Supervisor: THOMAS PONDER	Elite #/Operator: ELITE #3 / ANDREW LINN

OptiCem v6.4.10  
10-Jul-13 02:33

## WPX BCU 33-36-199

### 9.625 IN SURFACE 2ND STAGE

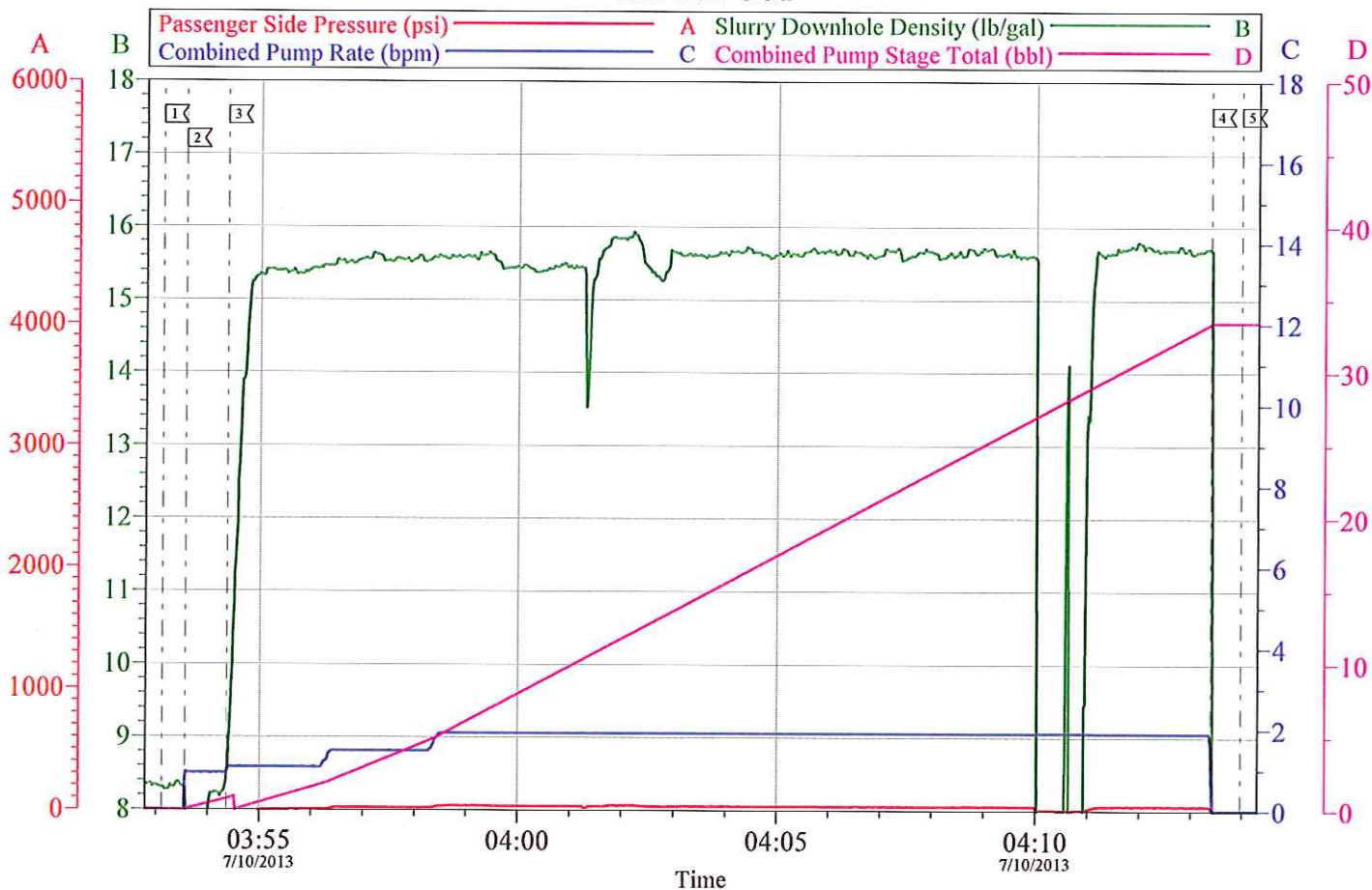


Customer: WPX	Job Date: 09-Jul-2013	Sales Order #: 900575246	
Well Description: BCU 33-36-199	Job Type: MULTI STAGE SURFACE	ADC Used: YES	
Company Rep: BEAUDE OAKS	Cement Supervisor: THOMAS PONDER	Elite #/Operator: ELITE #3 / ANDREW LINN	

OptiCem v6.4.10  
10-Jul-13 02:43

# WPX BCU 33-36-199

## 1ST TOP OUT



Customer: WPX	Job Date: 10-Jul-2013	Sales Order #: 900575246
Well Description: BCU 33-36-199	Job Type: TOP OUT	ADC Used: YES
Company Rep: BEAUDE OAKS	Cement Supervisor: THOMAS PONDER	Elite #/Operator: ELITE #3 / ANDREW LINN

OptiCem v6.4.10  
10-Jul-13 04:54

# HALLIBURTON

Company: WPX Date: 7/9/2013  
Submitted by: THOMAS PONDER Date Rec.: 7/9/2013  
Attention: LARRY COOKSEY S.O.# 900575246  
Lease FEDERAL BCU Job Type: MULTI STAGE SURFACE  
Well # 33-36-199

Specific Gravity	<i>MAX</i>	<b>1</b>
pH	<i>8</i>	<b>7</b>
Potassium (K)	<i>5000</i>	<b>250 Mg / L</b>
Calcium (Ca)	<i>500</i>	<b>120 Mg / L</b>
Iron (FE2)	<i>300</i>	<b>0 Mg / L</b>
Chlorides (Cl)	<i>3000</i>	<b>0 Mg / L</b>
Sulfates (SO <sub>4</sub> )	<i>1500</i>	<b>&lt;200 Mg / L</b>
Carbonates hardness		
Temp	<i>40-80</i>	<b>80 Deg</b>
Total Dissolved Solids		<b>310 Mg / L</b>

Respectfully: THOMAS PONDER

Title: CEMENTING SUPERVISOR

Location: GRAND JCT, CO