

ATLAS RESOURCES, LLC

Prepared by:	Maddie Lariviere	WI	SURVEYS:		Geological tops	
		NRI	500	0.61	Surface	3667
Lease	ON THE BRINK	Surface	1000	0.79	Pierre Shale	330
Well Number	843-3-14	Mineral	1500	1.2	Sharron Springs	2357
API	05-095-06394-00		2000	0.76	Niobrara Chalk	2404
Location	SESE Sec. 3-T8N, R44W		2300	1.20	TD	2685
BHL			2600	1.19		
Field	Amherst					
Unit						
County	Phillips					
State	Colorado					
GL	3667					
KB	3679					
Spud Date	12/27/2011					
Completion date	2/28/2012					
First gas sales	9/5/2012					

A-sect	Wellhead Inc LM-70	7 X 4 1/2	1500#	Screw on mandrel
B-sect	R&M LM-45	4 1/2 X 2 3/8	1500#	Screw on mandrel
Tree				

Surface Cement

Cement w/ 105 sk Portland 1/11 ASTM C 150 Cement and displace w/762 gal of water Cir 4 brls cement to the pit. 30 ft cement left in the 7" sp. Pumped by Schaal drilling. Plug down 3:45 PM 12/27/2011

Producing ZONE Niobrara

Hole Size	9 7/8	
Surf Casing	7" 17#	11 jts meas 461.85
Shoe		473.85

Hole Size	6 1/4	
Prod csg	4 1/2 11.6#	63 jts meas: 2657.85

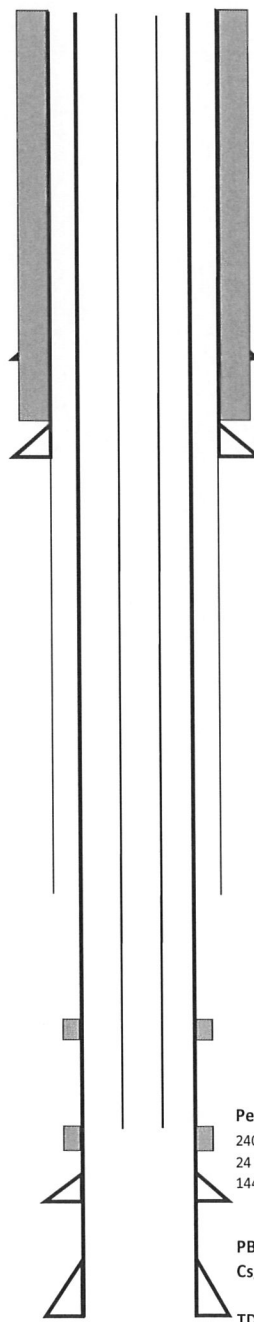
TOC 1,930

Cement Design

Rig up ADT Cementers and cement w/75 sks type 1 neat cement . Displace w/40.7 brls water. Plug down @ 9:00 am on 1/9/2012 held ok

Stimulation Treatment

Frac Niobrara with Maverick Stimulation using 28 # crosslinked gel 50,020 #16/30 Daniels sand and 50,080 # 12/20 Texas Gold sand for a total of 100,100 # sand. 60.11 tons CO2. 553 BLWTR. 5 MIN- 732 PSI 10 MIN-709 PSI. 15 MIN -6696 PSI MAX RATE 14.4 AVG RATE 11.8 MAX PSI- 1129 AVG PSI 775 isip-815 psi



Perforations

2408-2432 W/ 6SPF
24 TOTAL FT
144 TOTAL SHOTS

PBTD	2,627.65
Csg shoe	2,669.85
TD	2,685